

# Be FloodSafe with sandbags

## BE PREPARED





Residents need to monitor water levels in creeks and storm drains near their homes as we enter the wet weather season. Major flood protection projects have been completed in Santa Clara County since 1982, but urban flooding can still occur along other portions of the rivers and creeks. Overflowing storm drains also can cause serious flooding.

Unlike other areas where residents may know days before a river reaches flood stage, flooding in the Santa Clara Valley can occur with little warning. Heavy winter rains can cause flooding in minutes. The heaviest rains and flooding are most likely to occur between December and March, so now's the time to begin preparing.

The Santa Clara Valley Water District is providing this Wet Weather Checklist to help you and your family prepare in advance of potential flooding. Please use it now, and keep it for future reference.

For questions visit us online at [www.valleywater.org/services/sandbagsites.aspx](http://www.valleywater.org/services/sandbagsites.aspx)

### MAP LEGEND

-  Creeks, rivers and reservoirs
-  Flood prone areas
-  City/County public works yards
-  Water district maintained sites



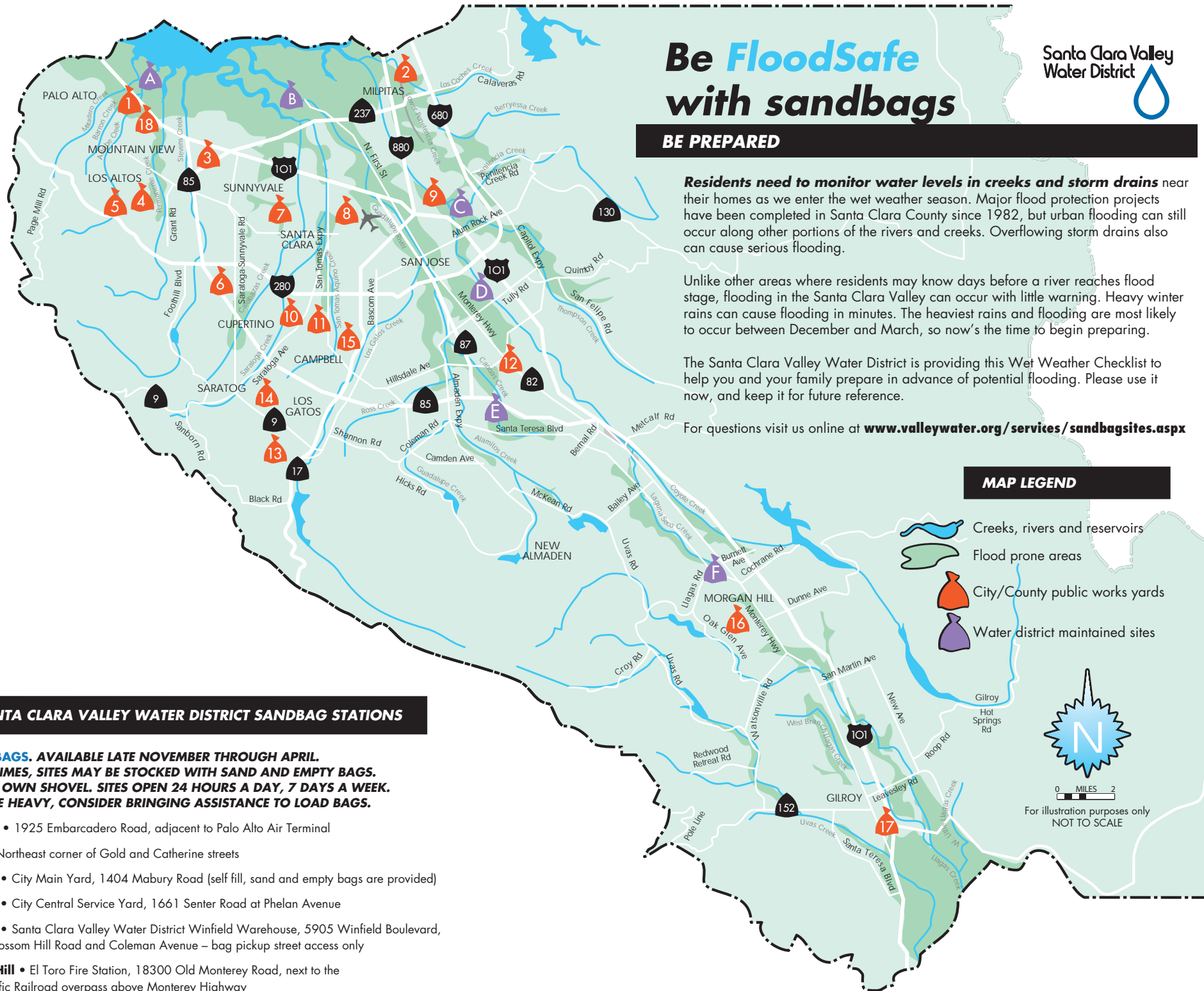
0 1 2  
MILES

For illustration purposes only  
NOT TO SCALE

## SANTA CLARA VALLEY WATER DISTRICT SANDBAG STATIONS

**FILLED SANDBAGS. AVAILABLE LATE NOVEMBER THROUGH APRIL. AT CERTAIN TIMES, SITES MAY BE STOCKED WITH SAND AND EMPTY BAGS. BRING YOUR OWN SHOVEL. SITES OPEN 24 HOURS A DAY, 7 DAYS A WEEK. BAGS MAY BE HEAVY, CONSIDER BRINGING ASSISTANCE TO LOAD BAGS.**

- A Palo Alto** • 1925 Embarcadero Road, adjacent to Palo Alto Air Terminal
- B Alviso** • Northeast corner of Gold and Catherine streets
- C San Jose** • City Main Yard, 1404 Mabury Road (self fill, sand and empty bags are provided)
- D San Jose** • City Central Service Yard, 1661 Senter Road at Phelan Avenue
- E San Jose** • Santa Clara Valley Water District Winfield Warehouse, 5905 Winfield Boulevard, between Blossom Hill Road and Coleman Avenue – bag pickup street access only
- F Morgan Hill** • El Toro Fire Station, 18300 Old Monterey Road, next to the Union Pacific Railroad overpass above Monterey Highway





## OTHER SOURCES OF UNFILLED SANDBAGS

**UNFILLED SANDBAGS. BRING YOUR OWN SHOVEL. EMPTY BAGS SUPPLIED BY THE WATER DISTRICT. CONSIDER BRINGING ASSISTANCE TO FILL AND LOAD BAGS. PROOF OF RESIDENCY MAY BE REQUIRED AT SOME SITES. CHECK INDIVIDUAL SITES FOR OPERATING HOURS.**

- 1 **Palo Alto** • Mitchell Park, 600 E. Meadow Drive near baseball field. Bags and sand available all day. (650) 496-6974, after hours: (650) 329-2413
- 2 **Milpitas** • 540 S. Abel Street. Additional bags located at the Sports Center at 1325 E. Calaveras Blvd. (408) 586-2643, after hours: (408) 586-2400. BOTH sites will have sand and bags 24/7.
- 3 **Mountain View** • Public Services, 231 N. Whisman Ave. (Located at Whisman Rd. and Gladys Ave.) (650) 903-6329, after hours: (650) 903-6395. Bags and sand available all day at parking lot.
- 4 **Los Altos** • Municipal Service Center, 707 Fremont Ave. at McKenzie Park parking lot. Bags and sand available all day. (650) 947-2785, after hours: (650) 947-2770
- 5 **Los Altos Hills** • Corporation Yard, 27500 Purissima Rd. at Little League Field at little league field, (650) 941-7222, Mon.- Fri. 7:30 a.m. - 5:30 p.m.
- 6 **Cupertino** • City Corporation Yard, 10555 Mary Ave. Bags and sand available all day. (408) 777-3269, Mon. - Fri. 6 a.m. - 3:30 p.m., after hours: County Communications (408) 299-2507
- 7 **Sunnyvale** • Corporation Yard, 221 Commercial St. at end of California Street. Bags and sand available all day. (408) 730-7510, Mon. - Fri. 6:30 a.m. - 4:30 p.m., after hours: (408) 730-7180.
- 8 **Santa Clara** • City Corporation Yard, 1700 Walsh Ave. (408) 615-3080, after hours: (408) 615-5640 Available 8 a.m.– 4 p.m. inside gate (Must call first. Sandbags available year round)
- 9 **San Jose** • County East Yard, 1505 Schallenberger Rd., Mon. - Fri., 7:30 am. - 4 p.m. (408) 494-2750, after hours: County Communications (408) 299-2507
- 10 **San Jose** • County West Yard, 11030 Doyle Rd., bags and sand available anytime outside gate (408) 366-3100, after hours: County Communications (408) 299-2507
- 11 **San Jose** • City West Yard, 5090 Williams Road, filled sandbags available anytime outside gate. (408) 277-4373
- 12 **San Jose** • City South Yard, 4420 Monterey Rd. at Skyway Drive, filled sandbags available anytime outside gate. (408) 361-6818
- 13 **Los Gatos/Monte Sereno** • 41 Miles Avenue at Balzer Field parking lot (Monte Sereno citizens pick up at Los Gatos site), bags and sand available anytime at lot. (408) 399-5770, after hours: (408) 354-8600
- 14 **Saratoga** • Corporation Yard, 19700 Allendale Ave., near Post Office, bags and sand available anytime outside gate. (408) 868-1245, after hours: County Communications (408) 299-2507
- 15 **Campbell** • City Corporation Yard, 290 South Dillon Ave., (408) 866-2145, Mon.–Fri. 7 a.m. - 3:30 p.m.
- 16 **Morgan Hill** • City Corporation Yard, 100 Edes Ct., Mon. - Fri. 8 a.m. - 5 p.m., open all day, bags and sand available anytime outside gate. (408) 776-7333, after hours (408) 779-2101
- 17 **Gilroy** • Fire Station, 7070 Chestnut St. at 10th Street, bags and sand available in the parking lot behind fire station. (408) 846-0451, after hours: (408) 846-0350 (leave msg)
- 18 **Palo Alto** • Rinconada Park Tennis Court Parking Lot (intersection of Hopkins Avenue and Newell Road). (650) 496-6974, after hours: (650) 329-2413

## WET WEATHER CHECKLIST

- Flood Insurance** Renters, homeowners and business owners can purchase flood insurance from the National Flood Insurance Program. (Normal coverage does not cover flooding.) It can take 30 to 60 days. 1-800-427-4661.
- Flood-Prone?** Check the map above to see if your home or workplace is subject to flooding. Also talk to neighbors and insurance carrier. Practice evacuating to higher ground.
- Elderly/Disabled** Alert neighbors to any special needs that family members have due to age or disability, in case they're home alone during a flood. Provide a list with family contact numbers, doctor's name, any special medications.
- Family Contacts** Post family emergency numbers by each phone and see that all family members carry a card with these numbers in their wallet or backpack. Pick a "check-in contact" for family to phone, preferably outside the Bay Area or out of state.
- Inventory** Update your list of personal belongings. Store all vital documents in a safe deposit box or on a second floor.
- Meeting Place** Pick a safe location near your home where family members can meet if they become separated and a second location on high ground outside your neighborhood in case it floods.
- Pets** Put identification tags on all pets in case gates blow open or fences blow down. Even taping your phone and address to their collar will last for weeks. Wet fur increases the chill factor, so do not leave pets outside or tied up during a storm—prepare a place inside.
- Radio** Keep extra batteries and a battery-operated radio on hand. Tape a list of local news radio stations to it that report Santa Clara County road and weather conditions.
- Roofs/Gutters** Make sure your roof, windows, rain gutters and drainage system can handle heavy rain. Tarp or seed unplanted slopes.
- Sandbags** Visit the Santa Clara Valley Water District's website at [www.valleywater.org/services/sandbagsites.aspx](http://www.valleywater.org/services/sandbagsites.aspx) to find out about free sandbags and how to use them.
- Storage** Prepare to store valuables on higher shelves or on a second story. Move stored furniture as high as possible, as well as garden and pool supplies.
- Storm Drains** Keep the top of the storm drains near your home free of leaves and other debris.
- Vehicles/RVs** Prepare to move vehicles, RVs and boats to higher ground.