

Mayor's Gang Prevention Task Force

Neighborhoods Commission

Wednesday January 13, 2016

177 Square miles

1,000,000 + people

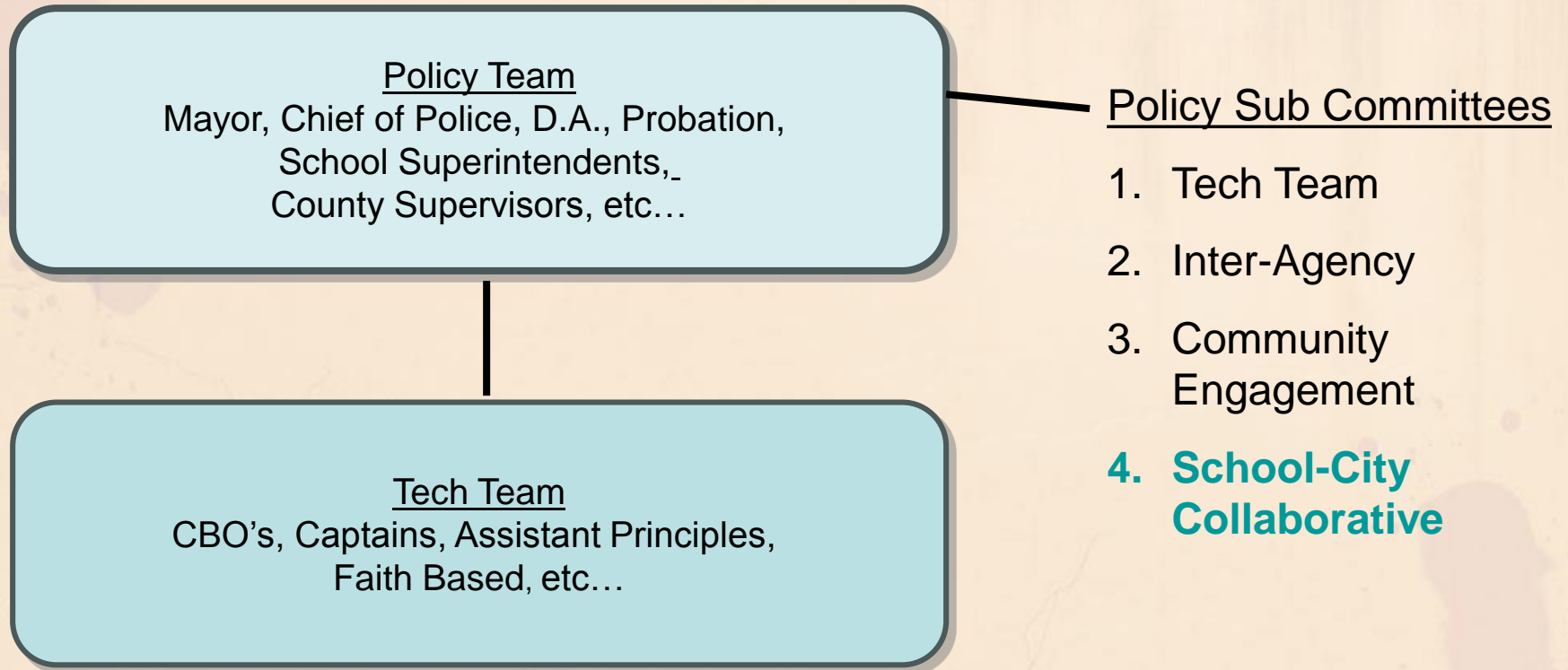
10th largest U.S. city

4th Safest U.S. city with population over
500,000

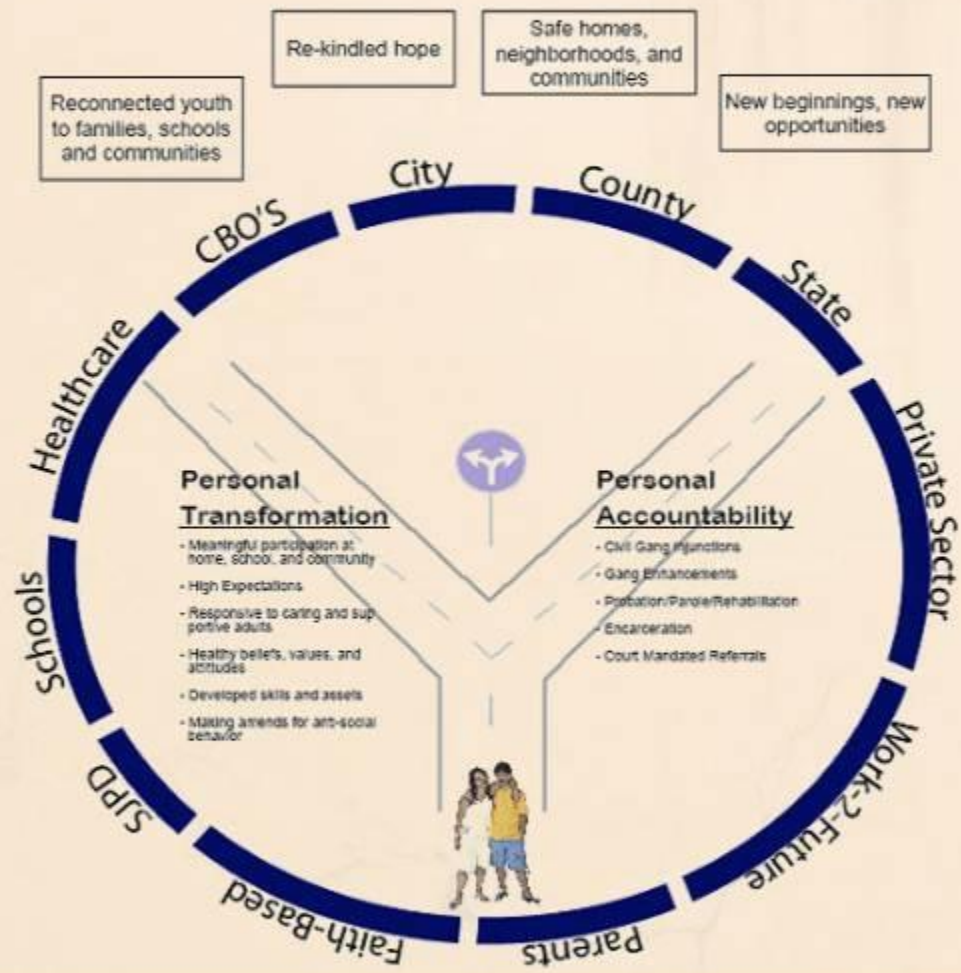
History

- Started by Mayor Susan Hammer in 1991 to reduce gang delinquency/victimization when asked for help by resident.
- San José recognized a new trend of high risk youth attending and getting kicked out of teen centers.
- Brought municipal, education, social services, justice, faith and business organizations together to reduce crime.
- Established prevention, intervention and suppression as the strategy continuum.
- 70% prevention, 30% intervention allocation strategy.
- In 1991, San José provided \$1 million to fund services San José BEST.

MGPTF Structure

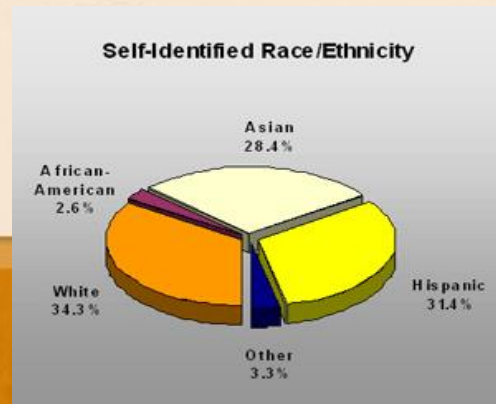


360° COMMUNITY ACCOUNTABILITY



San José Youth Gang Challenges – 2015

- Over 6,500 validated gang members (many more non-validated gang associates)
- Approx. 102 validated gangs in San José/200 in Santa Clara County
- 58% of victims 58% of offenders of gang-related crimes were 19 years or under
- 47% of female victims and 52% of female offenders of gang crimes were 17 years old or younger
- 9 out of the 29 homicides in 2015 were gang-related.

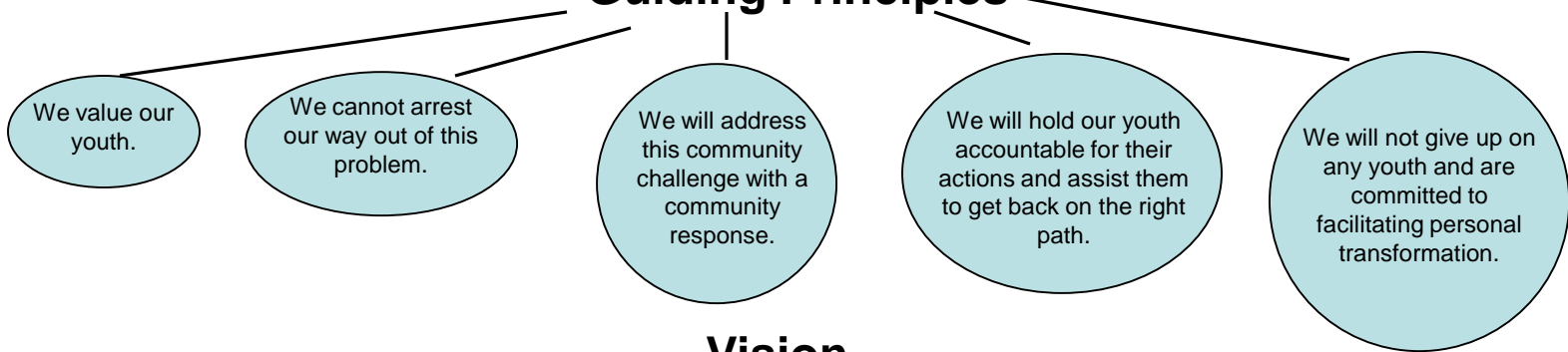


MGPTF Strategic Work Plan



Mayor's Gang Prevention Task Force

Guiding Principles



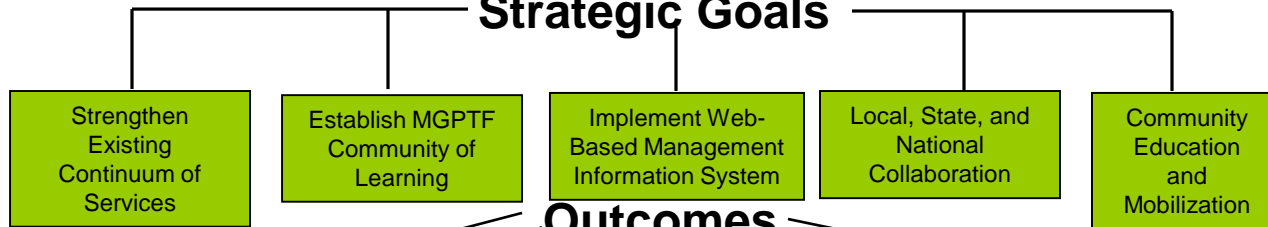
Vision

Safe and healthy youth connected to their families, schools, communities, and their futures.

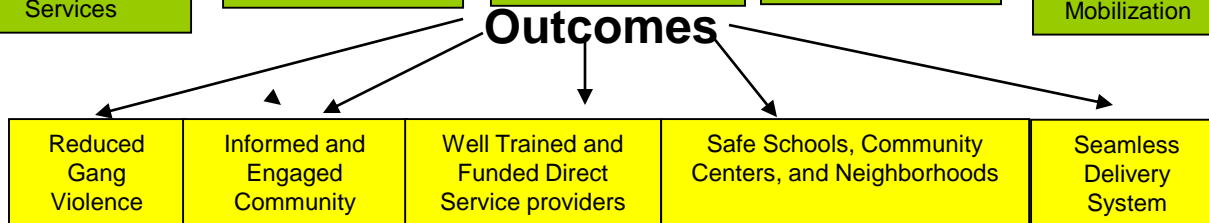
Mission

We exist to ensure safe and healthy opportunities for San José's youth, free of gangs and crime, to realize their hopes and dreams, and become successful and productive in their homes, schools and neighborhoods.

Strategic Goals



Outcomes



San Jose B.E.S.T

- Funding Arm of MGPTF
- 20 Agencies (CBO' s) Funded

5 Eligible Services

1. Personal Transformation through Intervention and Case Management Services;
Cognitive Behavior Intervention and Life Skills Education;
2. Street Outreach Worker Services: Gang Outreach/ Mediation/ Intervention;
3. Outpatient Substance Abuse Services
4. Vocational/Job Training Services
5. Parent Awareness/Training & Family Support

Who performs each strategy?

Traditional Way of Thinking

Prevention

Schools,
Parents,
Churches

Intervention

Youth
Workers,
Counselors

Suppression

Police, DA,
Corrections,
Probation,
Parole

Who performs each strategy?

Innovative Thinking.

Everyone can do all three strategies

Prevention

Schools,
Parents,
Churches

Intervention

Divert kids away
from violence,
After School Activities

Suppression

Help law enforcement identify
and prosecute criminals,
report intelligence

Teach families about
consequences of gang
violence, promote
Developmental Assets

Youth
Workers,
Counselors

Help law enforcement identify
and prosecute criminals.
Maintain
credibility with youth

Connect with youth/families,
teach them about consequences,
promote Developmental Assets
Law Related Education

Intervene in pending violence,
refer youth to alternatives,
remove or place kids away

Police, DA,
Corrections,
Probation,
Parole

Q&A