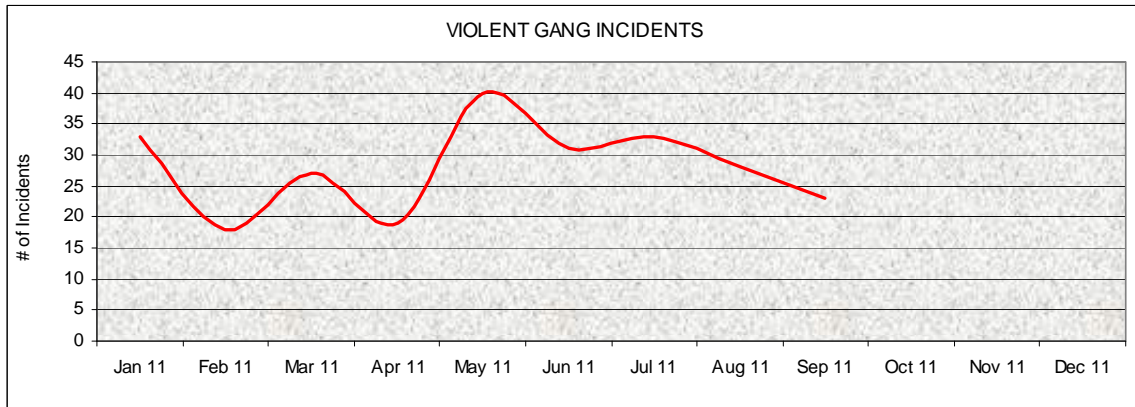
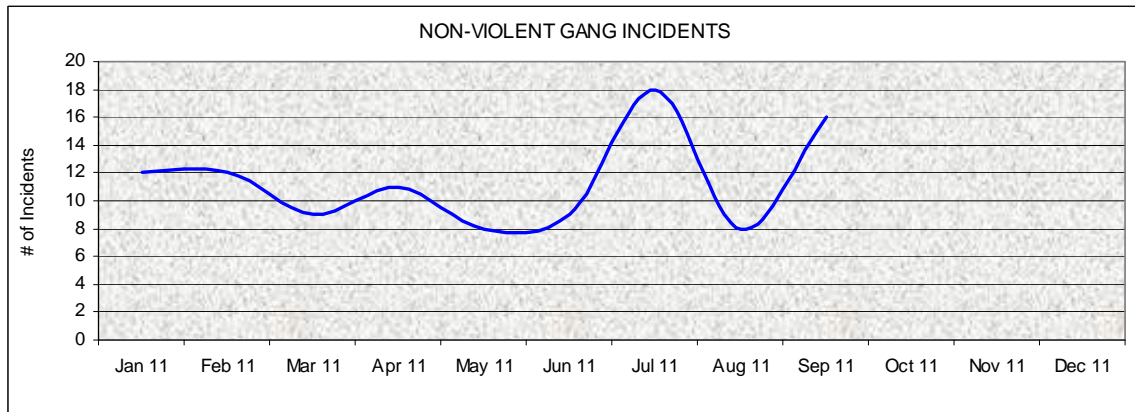


## Twelve Month Trend of Gang Related Incidents Violent and Non-Violent Incidents Calendar Year 2011



Violent Incidents include Homicide, Attempted Homicide, Rape, Robbery, Aggravated and Simple Assaults



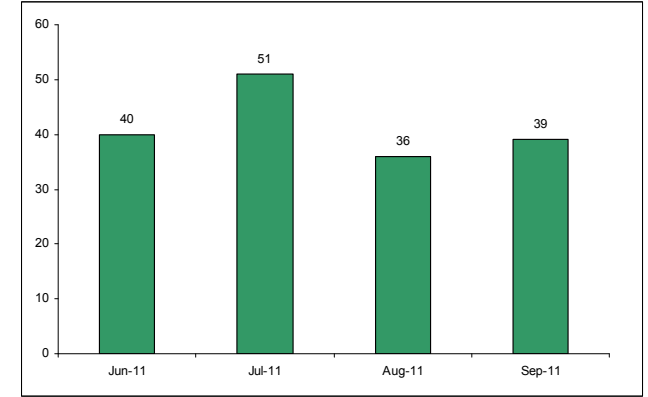
Non-Violent Incidents include Disturbances, Brandishing, Narcotics, Weapons and Probation Violations, etc



# Density and Location of Gang Related Incidents

## 6.1.2011 - 9.30.2011

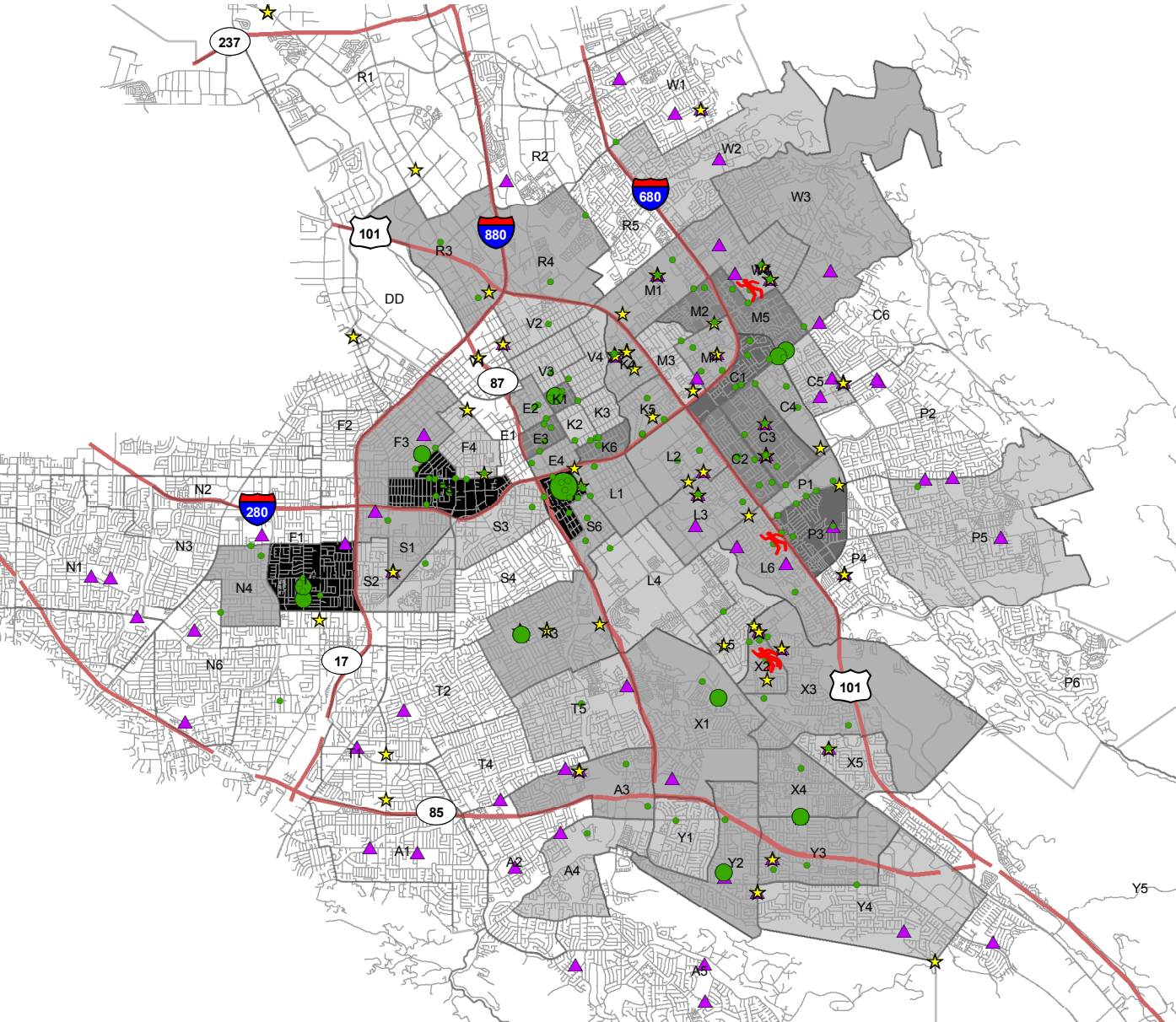
Total Number of Incidents  
June 1, 2011 - September 30, 2011



Breakdown by Division

DIVISION	DIST	Total
CENTRAL	E	10
	K	15
	R	4
	V	3
CENTRAL Total		32
FOOTHILL	C	20
	M	15
	P	11
FOOTHILL Total		52

DIVISION	DIST	Total
SOUTHERN	A	3
	T	3
	X	13
	Y	7
SOUTHERN Total		26
WESTERN	F	13
	L	10
	N	11
	S	15
	WESTERN Total	



- SSCI
- CBO
- Gang Related Homicide

Number of Incidents per Location

- 1
- 2
- 3

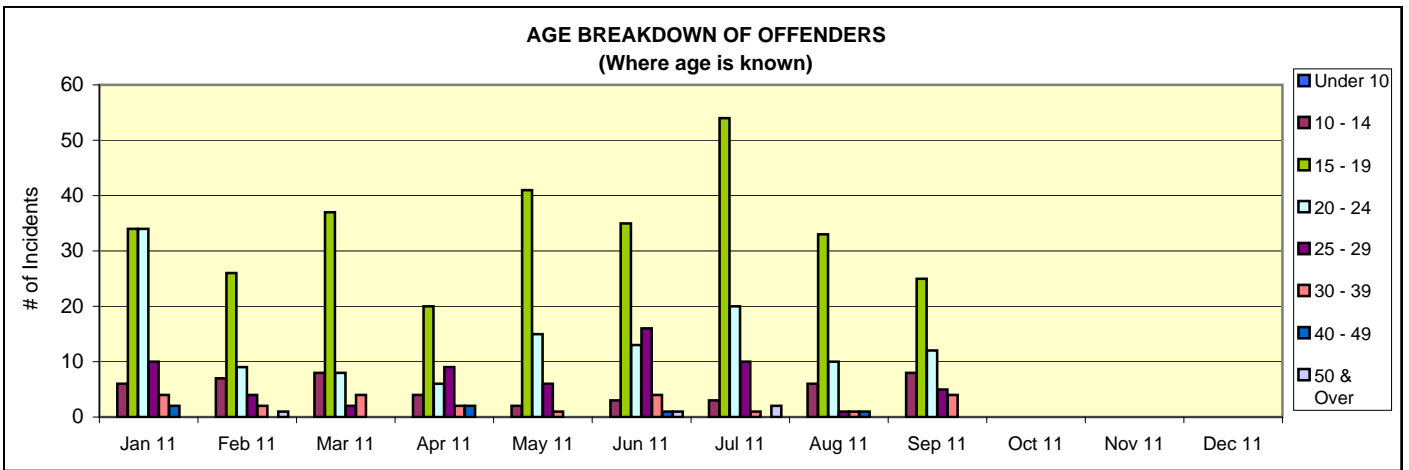
Number of Incidents per Beat

- 1
- 2-3
- 4-5
- 6-7
- 8-9

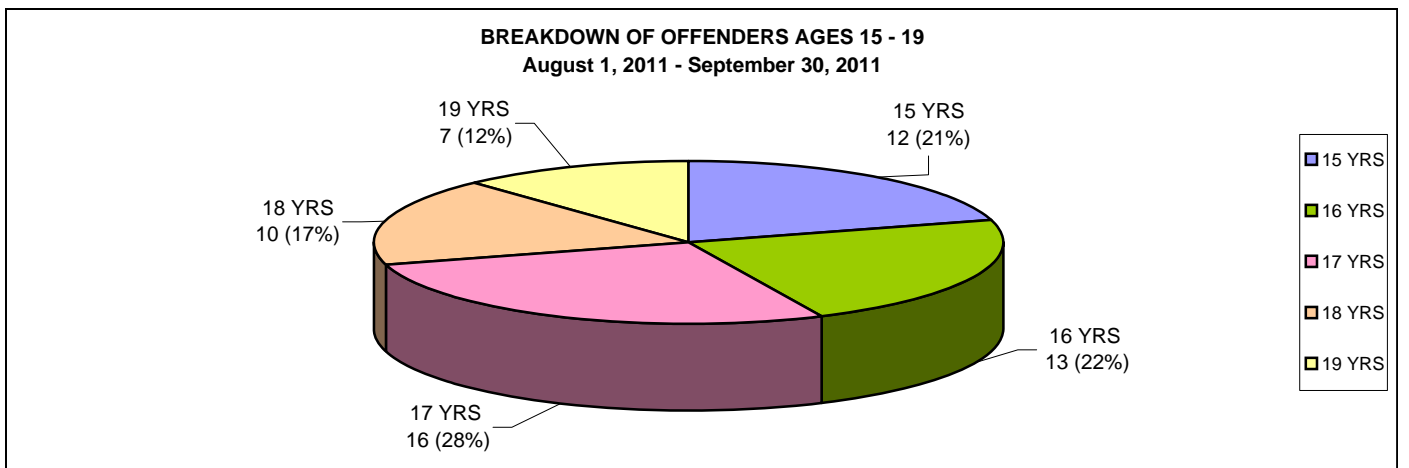
Source: S.JPD GIU / Homicide

**GANG RELATED INCIDENTS  
AGE BREAKDOWN OF OFFENDERS  
Calendar Year 2011**

<b>OFFENDER BREAKDOWN</b>													
Age Range	Jan 11	Feb 11	Mar 11	Apr 11	May 11	Jun 11	Jul 11	Aug 11	Sep 11	Oct 11	Nov 11	Dec 11	Grand Total
Under 10													0
10 - 14	6	7	8	4	2	3	3	6	8				47
15 - 19	34	26	37	20	41	35	54	33	25				305
20 - 24	34	9	8	6	15	13	20	10	12				127
25 - 29	10	4	2	9	6	16	10	1	5				63
30 - 39	4	2	4	2	1	4	1	1	4				23
40 - 49	2			2		1		1					6
50 & Over		1				1	2						4
UNK	7	8	17	8	35	40	18	27	13				173
<b>TOTAL</b>	<b>97</b>	<b>57</b>	<b>76</b>	<b>51</b>	<b>100</b>	<b>113</b>	<b>108</b>	<b>79</b>	<b>67</b>	<b>0</b>	<b>0</b>	<b>0</b>	<b>748</b>
<b>TOTAL JUVENILES</b>	<b>29</b>	<b>26</b>	<b>33</b>	<b>19</b>	<b>20</b>	<b>24</b>	<b>39</b>	<b>30</b>	<b>25</b>	<b>0</b>	<b>0</b>	<b>0</b>	<b>245</b>
<b>TOTAL ADULTS</b>	<b>68</b>	<b>31</b>	<b>43</b>	<b>32</b>	<b>80</b>	<b>89</b>	<b>69</b>	<b>49</b>	<b>42</b>	<b>0</b>	<b>0</b>	<b>0</b>	<b>503</b>



<b>BREAKDOWN OF OFFENDER AGE RANGE 15 - 19</b>													
Age	Jan 11	Feb 11	Mar 11	Apr 11	May 11	Jun 11	Jul 11	Aug 11	Sep 11	Oct 11	Nov 11	Dec 11	Grand Total
15	5	3	10	5	5	9	8	8	4				57
16	6	11	12	7	6	3	7	7	6				65
17	12	5	3	3	7	9	21	9	7				76
18	3	4	8	2	11	7	8	8	2				53
19	8	3	4	3	12	7	10	1	6				54
<b>TOTAL</b>	<b>34</b>	<b>26</b>	<b>37</b>	<b>20</b>	<b>41</b>	<b>35</b>	<b>54</b>	<b>33</b>	<b>25</b>	<b>0</b>	<b>0</b>	<b>0</b>	<b>305</b>



Note: One case may have multiple offenders. Conversely, a case may not have a victim as both parties were arrested/ cited or victim is a business.

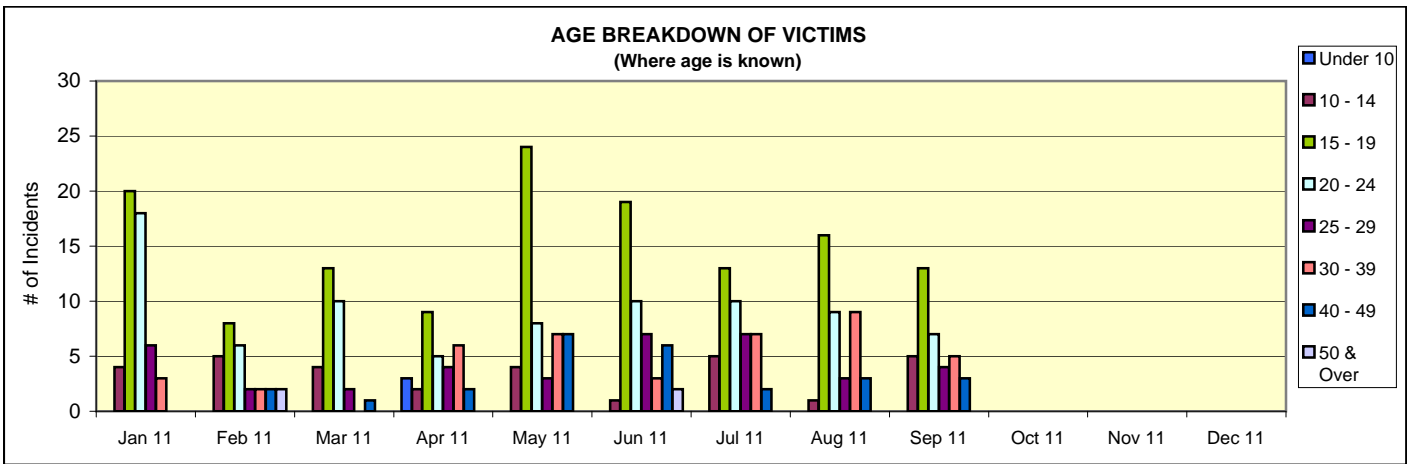
GANG RELATED INCIDENTS  
AGE BREAKDOWN OF OFFENDERS  
Calendar Year 2011

GANG RELATED INCIDENTS  
AGE BREAKDOWN OF OFFENDERS  
Calendar Year 2011

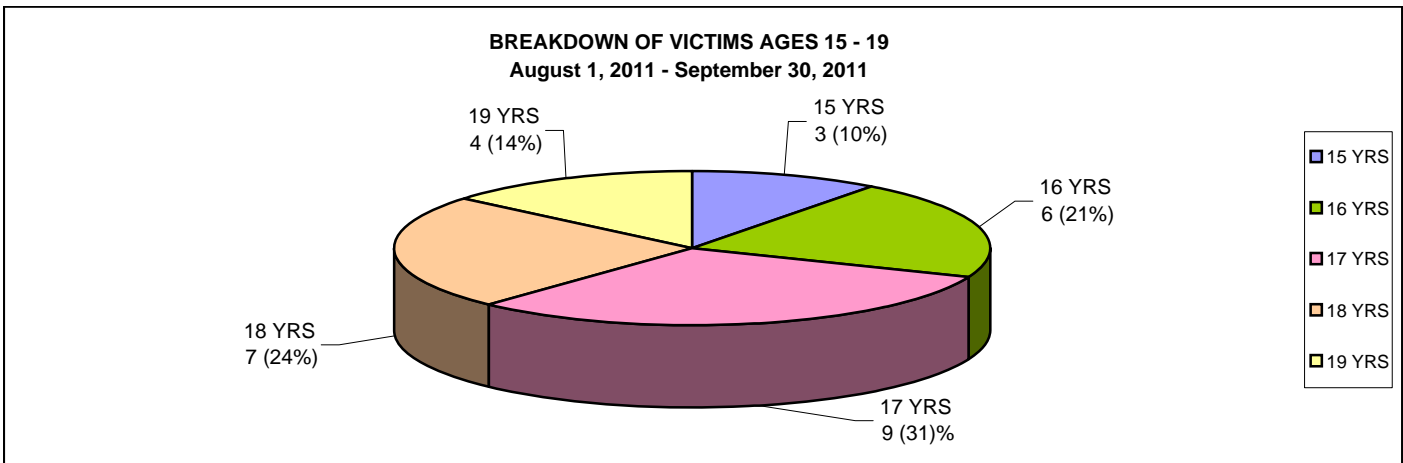
GANG RELATED INCIDENTS  
AGE BREAKDOWN OF OFFENDERS  
Calendar Year 2011

**GANG RELATED INCIDENTS  
AGE BREAKDOWN OF VICTIMS  
Calendar Year 2011**

<b>VICTIM BREAKDOWN</b>													
Age Range	Jan 11	Feb 11	Mar 11	Apr 11	May 11	Jun 11	Jul 11	Aug 11	Sep 11	Oct 11	Nov 11	Dec 11	Grand Total
Under 10				3									3
10 - 14	4	5	4	2	4	1	5	1	5				31
15 - 19	20	8	13	9	24	19	13	16	13				135
20 - 24	18	6	10	5	8	10	10	9	7				83
25 - 29	6	2	2	4	3	7	7	3	4				38
30 - 39	3	2		6	7	3	7	9	5				42
40 - 49		2	1	2	7	6	2	3	3				26
50 & Over		2				2							4
UNK		2		1	4	2	7	1	1				18
<b>TOTAL</b>	<b>51</b>	<b>29</b>	<b>30</b>	<b>32</b>	<b>57</b>	<b>50</b>	<b>51</b>	<b>42</b>	<b>38</b>	<b>0</b>	<b>0</b>	<b>0</b>	<b>380</b>
<b>TOTAL JUVENILES</b>	<b>17</b>	<b>12</b>	<b>12</b>	<b>8</b>	<b>16</b>	<b>12</b>	<b>10</b>	<b>12</b>	<b>5</b>	<b>0</b>	<b>0</b>	<b>0</b>	<b>104</b>
<b>TOTAL ADULTS</b>	<b>34</b>	<b>17</b>	<b>18</b>	<b>24</b>	<b>41</b>	<b>38</b>	<b>41</b>	<b>30</b>	<b>33</b>	<b>0</b>	<b>0</b>	<b>0</b>	<b>276</b>



<b>BREAKDOWN OF VICTIM AGE RANGE 15 - 19</b>													
Age	Jan 11	Feb 11	Mar 11	Apr 11	May 11	Jun 11	Jul 11	Aug 11	Sep 11	Oct 11	Nov 11	Dec 11	Grand Total
15	4	1	4		3	1	1		3				17
16	5	2	3	2	7		1	3	3				26
17	4	4	1	4	2	10	3	8	1				37
18	3	1	2	1	7	2	4	2	5				27
19	4		3	2	5	6	4	3	1				28
<b>TOTAL</b>	<b>20</b>	<b>8</b>	<b>13</b>	<b>9</b>	<b>24</b>	<b>19</b>	<b>13</b>	<b>16</b>	<b>13</b>	<b>0</b>	<b>0</b>	<b>0</b>	<b>135</b>



Note: One case may have multiple offenders. Conversely, a case may not have a victim as both parties were arrested/ cited or victim is a business.

GANG RELATED INCIDENTS  
AGE BREAKDOWN OF VICTIMS  
Calendar Year 2011





GANG RELATED INCIDENTS  
AGE BREAKDOWN OF VICTIMS  
Calendar Year 2011



GANG RELATED INCIDENTS  
AGE BREAKDOWN OF VICTIMS  
Calendar Year 2011

