

Non Profit and Affordable Housing Energy Summit

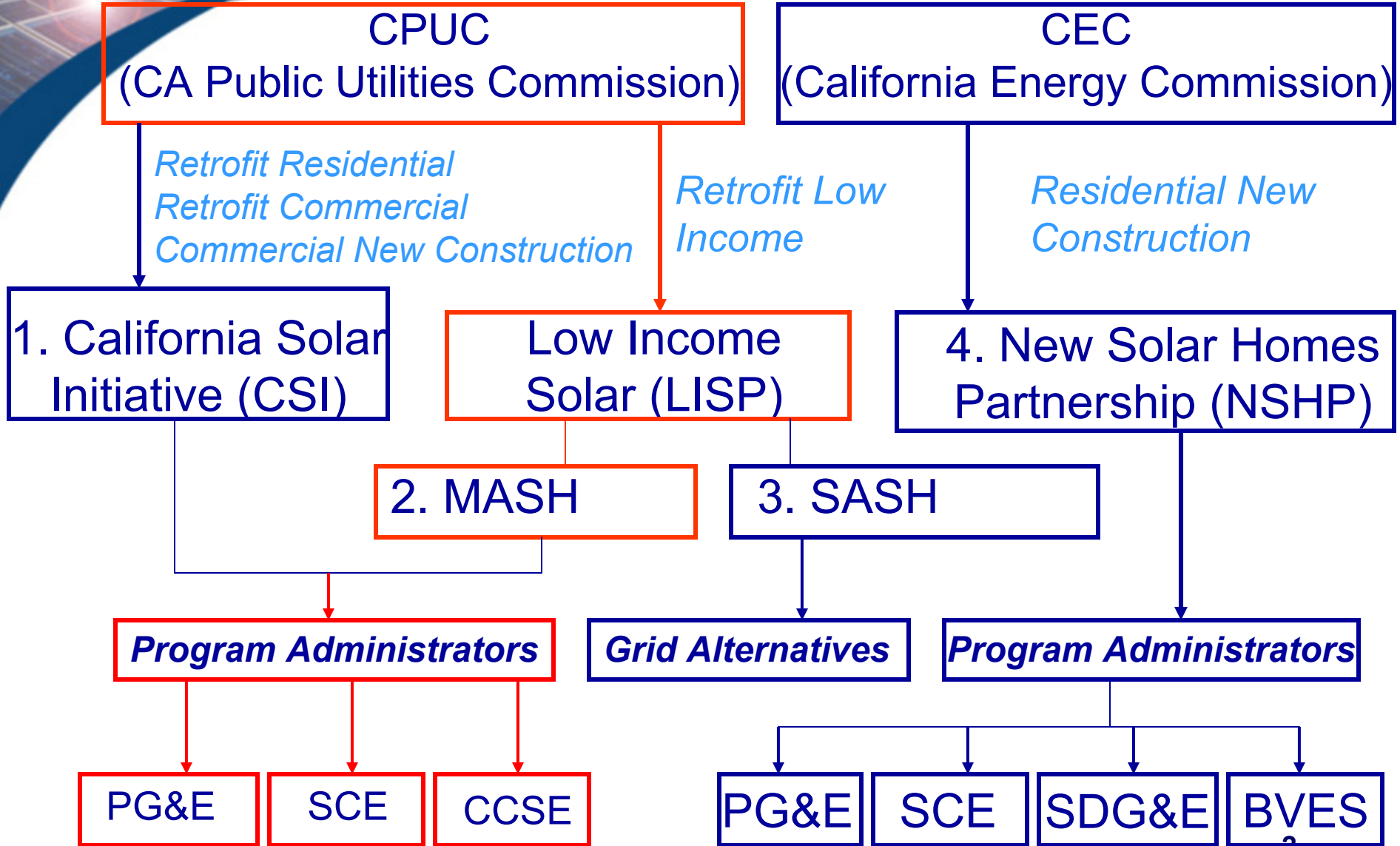
May 6, 2009

Caitlin S. Henig, Pacific Gas and Electric



Multifamily Affordable Solar Housing (MASH)

SB 1



CSI Background and History

- January 2007: Go Solar California campaign was launched
 - SB 1 was signed into law in 2006 to authorize the program
 - \$3.3 billion aimed at installing 3,000 MW of grid-installed solar
 - CSI, NSHP are part of Go Solar California
 - CSI covers all non-residential projects and existing residential projects in IOU territories -1,940 MW goal
 - NSHP covers new construction – 400 MW goal

Low Income Solar Program Background

- The Low Income Solar Program will provide education and incentives for installing solar PV systems in eligible low income structures (single-family homes and multifamily housing).
- \$216 M (10% of the ratepayer funded CSI Budget) was set aside for Low Income Solar
- There are two distinct programs:
 - \$108M for Single Family Affordable Solar Housing Program (SASH)
 - Administered statewide by GRID Alternatives
 - \$108M for Multifamily Affordable Solar Housing Program (MASH)
 - Administered by PG&E, SCE and CCSE

MASH Program Goals

- **Stimulate adoption of solar power** in the affordable housing sector
- **Improve energy utilization** and overall quality of affordable housing through application of solar and energy efficiency technologies
- **Decrease electricity use and costs** without increasing monthly household expenses for affordable housing building occupants
- **Increase awareness and appreciation** of the benefits of solar among affordable housing occupants and developers

MASH Eligibility

- Project site must be within service territory and receive retail electric service from Pacific Gas and Electric (PG&E), Southern California Edison (SCE) and San Diego Gas and Electric (administered by the CCSE)*
- Retrofit Residential Multifamily Projects that meet the definition of low income residential housing per Public Utilities Code 2852 (either of the following):
 - (A) Residential housing financed with low-income housing tax credits, tax-exempt mortgage revenue bonds, general obligation bonds, or local, state, or federal loans or grants, and for which the rents of the occupants who are lower income households, as defined in Section 50079.5 of the Health and Safety Code, do not exceed those prescribed by deed restrictions or regulatory agreements pursuant to the terms of the financing or financial assistance.
 - (B) A residential complex in which at least 20 percent of the total units are sold or rented to lower income households, as defined in Section 50079.5 of the Health and Safety Code, and the housing units targeted for lower income households are subject to a deed restriction or affordability covenant with a public entity that ensures that the units will be available at an affordable housing cost, as defined in Section 50052.5 of the Health and Safety Code, or at an affordable rent, as defined in Section 50053 of the Health and Safety Code for a period of at least 30 years.
- Must have an occupancy permit of 2 years or more
 - ❖ If you are working on a major rehab, check with New Solar Homes Partnership for eligibility

*Municipal electric utility customers, please check with your provider for any solar incentives or CSI updates.

** New construction residential projects are eligible under the New Solar Homes Partnership Program

MASH Eligibility Ctd

- Must use new and eligible equipment approved on CEC list
 - New inverter not required, new panels can be added to an existing inverter
- Minimum System Size of 1 kW
- Maximum System Size of 5 MW
 - Incentives will be capped to the **First** MW
- System size: production must be \leq previous 12 month usage history (kWh)
 - Documentation can be provided for added load: new appliances, added square footage, etc.
 - Residential system 5-9.9 kW in size, square footage can be used (2 watts x square feet = maximum CEC-AC system size)

*Municipal electric utility customers, please check with your provider for any solar incentives or CSI updates.

** New construction residential projects are eligible under the New Solar Homes Partnership Program

MASH Incentive Structure

There is one type of MASH Incentive:

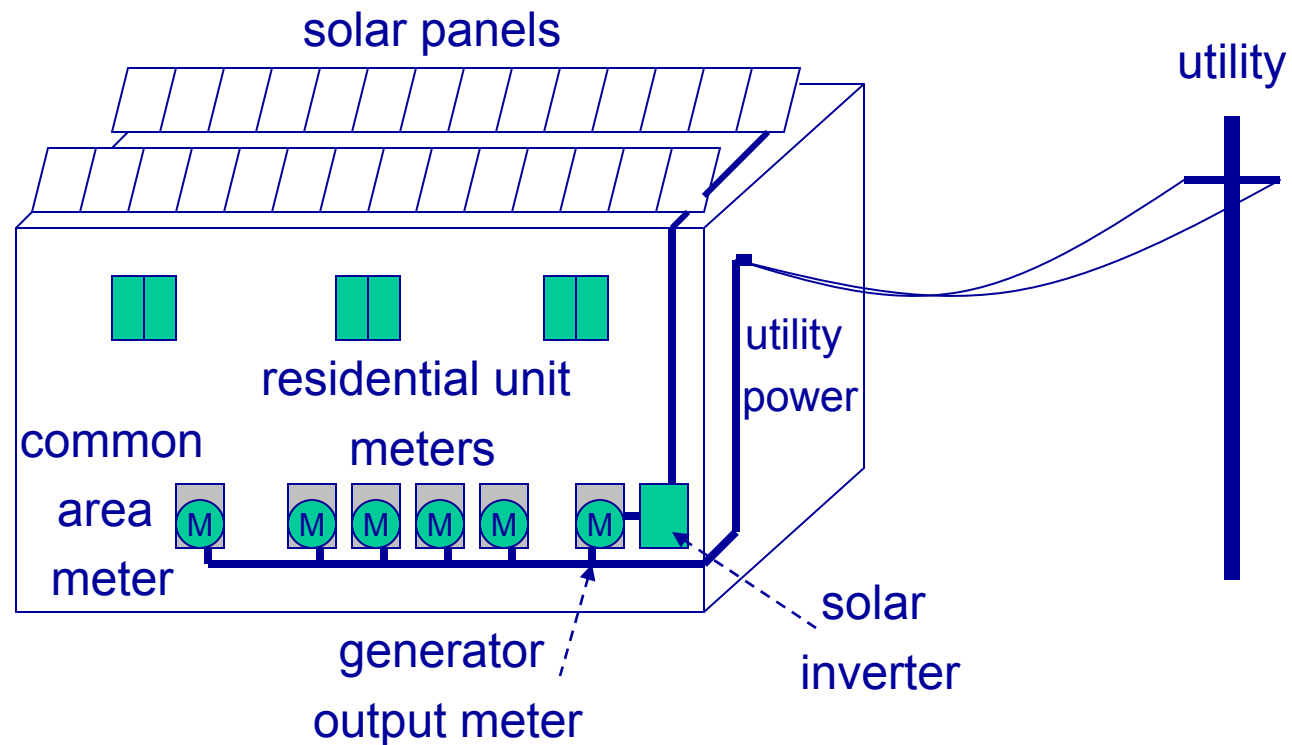
Expected Performance-Based Buydown (EPBB) - one time, up-front payment based on an estimate of the system's future performance

<u>Three levels of incentives</u>		
Track 1A: Common Load Offset	Track 1 B: Tenant Load Offset	Track 2: Grant-style incentives
\$3.30/Watt	\$4.00/Watt	\$/Watt Varies

MASH Incentives are not subject to a MW Trigger

Virtual Net Metering (VNM)

solar generator



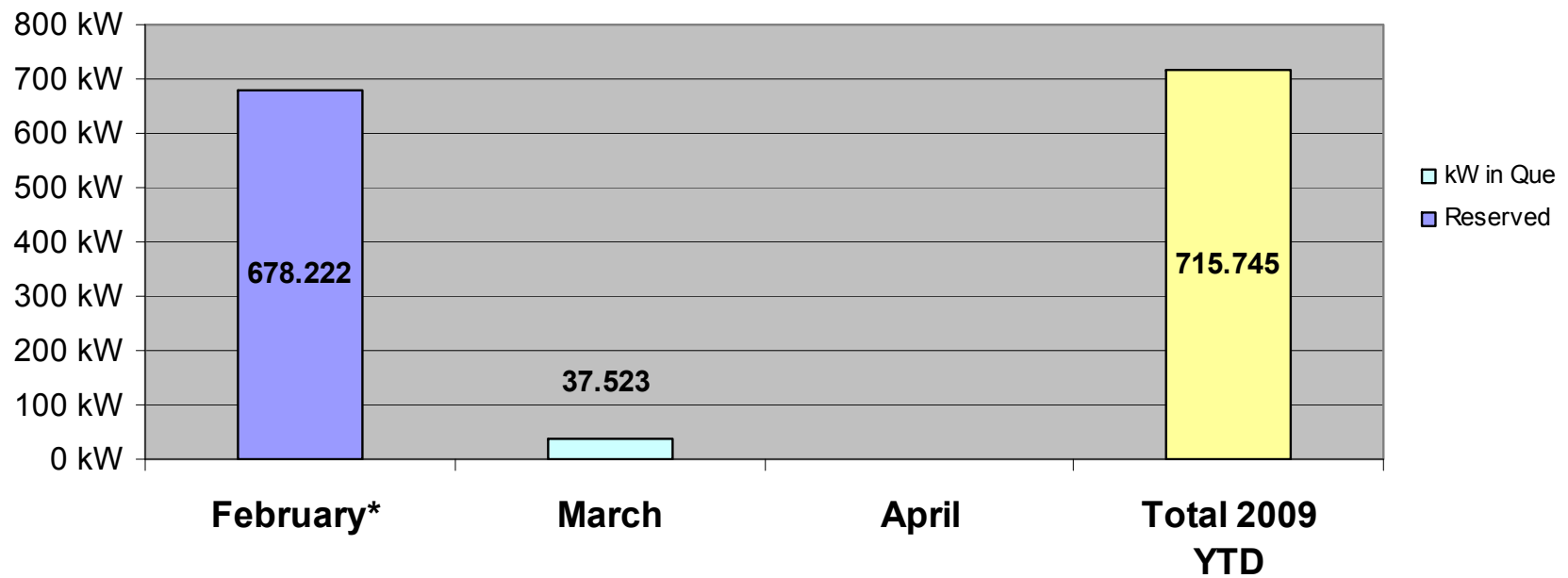
Virtual Net Metering (VNM)

- New Tariff available to MASH participants
- Credits from a single solar system at a Site are allocated across multiple accounts
- The Investor Owned Utilities (IOUs) filed a proposed VNM tariff on 2/13/09
 - Advice Letter was suspended by CPUC; supplemental filing 4/10
- MASH Decision directed CPUC to consider expansion of VNM to all multitenant buildings

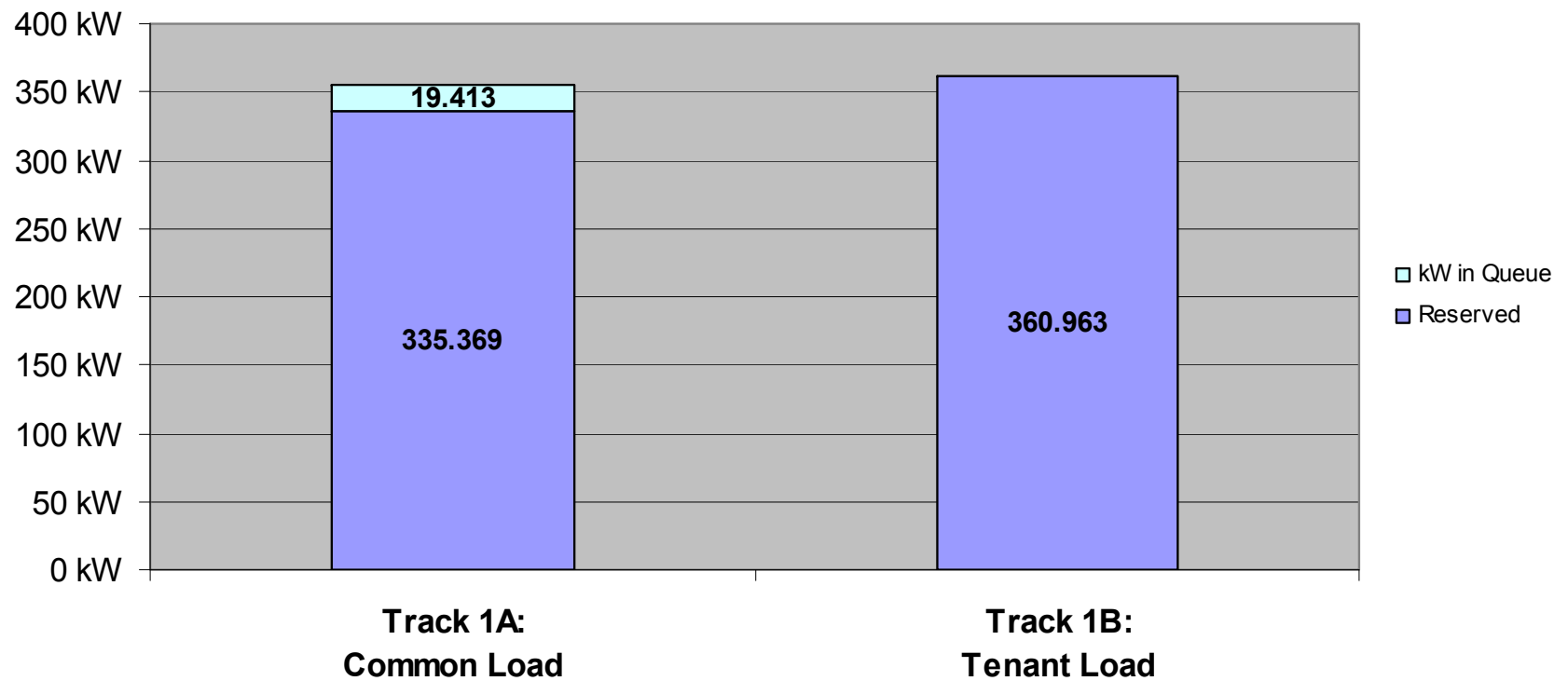
MASH Program Status and Statistics

- Track 1 launched February 17, 2009
 - 15 applications received (as of 5/4)
 - 716kW; \$2.6M
- Track 2 is expected to launch later this year
 - Supplemental Advice Letter filed 3/11, including Track 2 Grant Proposal Form

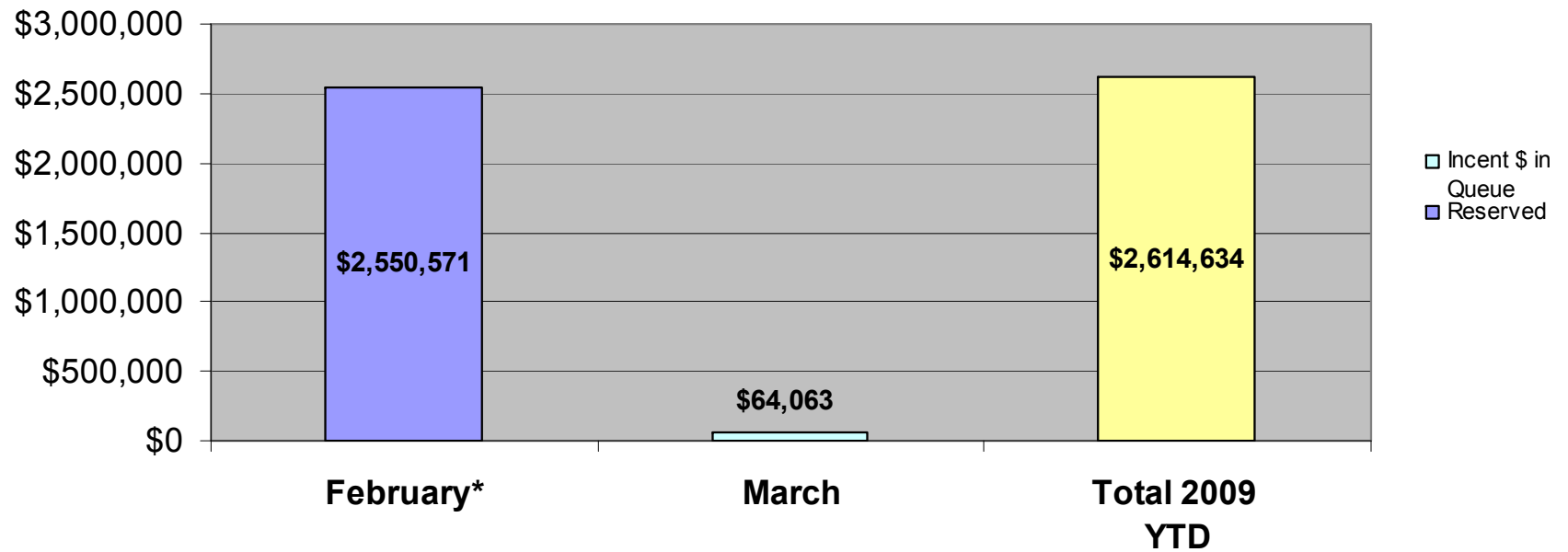
Total MASH Projects (kW) Average System Size: 48 kW



Common vs. Tenant Load (kW)



Total MASH Projects (\$) Average Reservation \$174,309



How to Apply

- **Download forms from website**
www.pge.com/lowincomesolar
- **Coming Soon**
 - **Access online database PowerClerk**

Resources

To Learn More...

Other Solar Webinars

- **CSI Workshop**
- **Basics of Photovoltaic Systems for Grid-Tied Applications**
- **Photovoltaic Site Analysis and System Sizing**
- **Interconnection Process**
- **Solar and Energy Efficiency**
- **Solar for the Entrepreneur**
- **Performance Data Provider and Performance Monitoring and Recording Service**
- **Solar Data Updates**

*****Please refer to the Pacific Energy Center training website for the next available Internet class:***

<http://www.pge.com/solarclasses>

Resources cont'd...

Applications:

www.pge.com/lowincomesolar

To request marketing materials:

solar@pge.com

EPBB Calculation Tool:

www.csi-epbb.com

California Energy Commission:

www.gosolarcalifornia.ca.gov

Contact Info

Caitlin S. Henig, Program Manager

E-mail: cjsv@pge.com

Phone: 415-973-1400