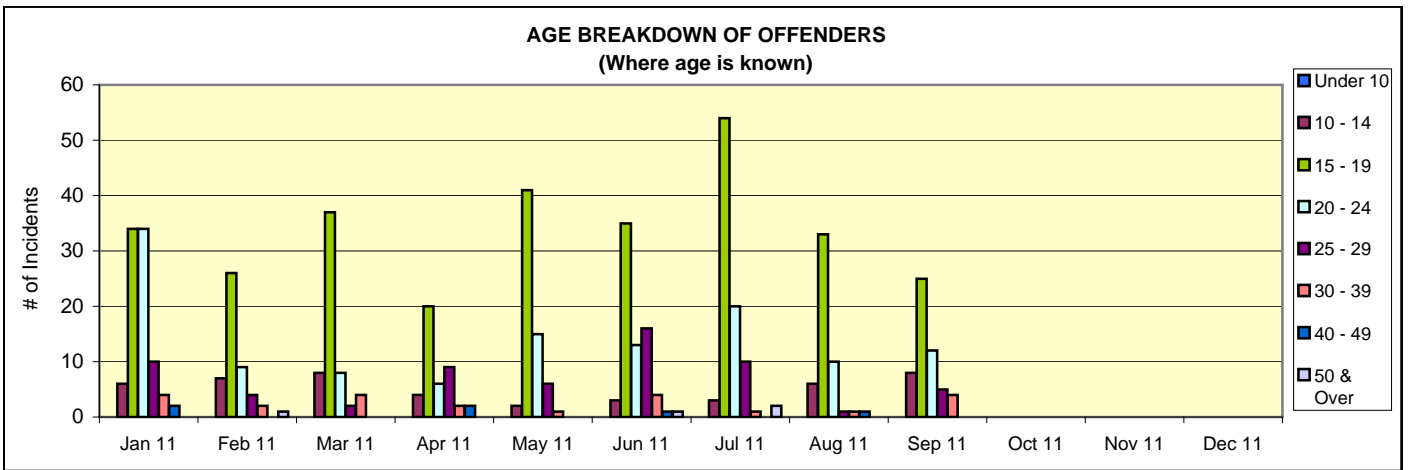
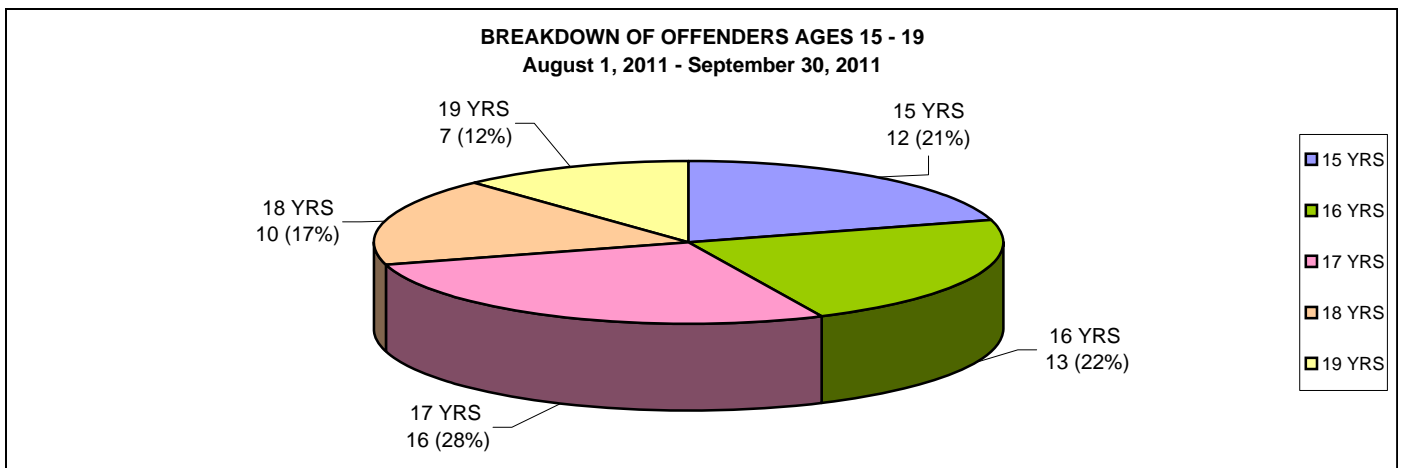


**GANG RELATED INCIDENTS
AGE BREAKDOWN OF OFFENDERS
Calendar Year 2011**

OFFENDER BREAKDOWN													
Age Range	Jan 11	Feb 11	Mar 11	Apr 11	May 11	Jun 11	Jul 11	Aug 11	Sep 11	Oct 11	Nov 11	Dec 11	Grand Total
Under 10													0
10 - 14	6	7	8	4	2	3	3	6	8				47
15 - 19	34	26	37	20	41	35	54	33	25				305
20 - 24	34	9	8	6	15	13	20	10	12				127
25 - 29	10	4	2	9	6	16	10	1	5				63
30 - 39	4	2	4	2	1	4	1	1	4				23
40 - 49	2			2		1		1					6
50 & Over		1				1	2						4
UNK	7	8	17	8	35	40	18	27	13				173
TOTAL	97	57	76	51	100	113	108	79	67	0	0	0	748
TOTAL JUVENILES	29	26	33	19	20	24	39	30	25	0	0	0	245
TOTAL ADULTS	68	31	43	32	80	89	69	49	42	0	0	0	503



BREAKDOWN OF OFFENDER AGE RANGE 15 - 19													
Age	Jan 11	Feb 11	Mar 11	Apr 11	May 11	Jun 11	Jul 11	Aug 11	Sep 11	Oct 11	Nov 11	Dec 11	Grand Total
15	5	3	10	5	5	9	8	8	4				57
16	6	11	12	7	6	3	7	7	6				65
17	12	5	3	3	7	9	21	9	7				76
18	3	4	8	2	11	7	8	8	2				53
19	8	3	4	3	12	7	10	1	6				54
TOTAL	34	26	37	20	41	35	54	33	25	0	0	0	305



Note: One case may have multiple offenders. Conversely, a case may not have a victim as both parties were arrested/ cited or victim is a business.

GANG RELATED INCIDENTS
AGE BREAKDOWN OF OFFENDERS
Calendar Year 2011

GANG RELATED INCIDENTS
AGE BREAKDOWN OF OFFENDERS
Calendar Year 2011

GANG RELATED INCIDENTS
AGE BREAKDOWN OF OFFENDERS
Calendar Year 2011