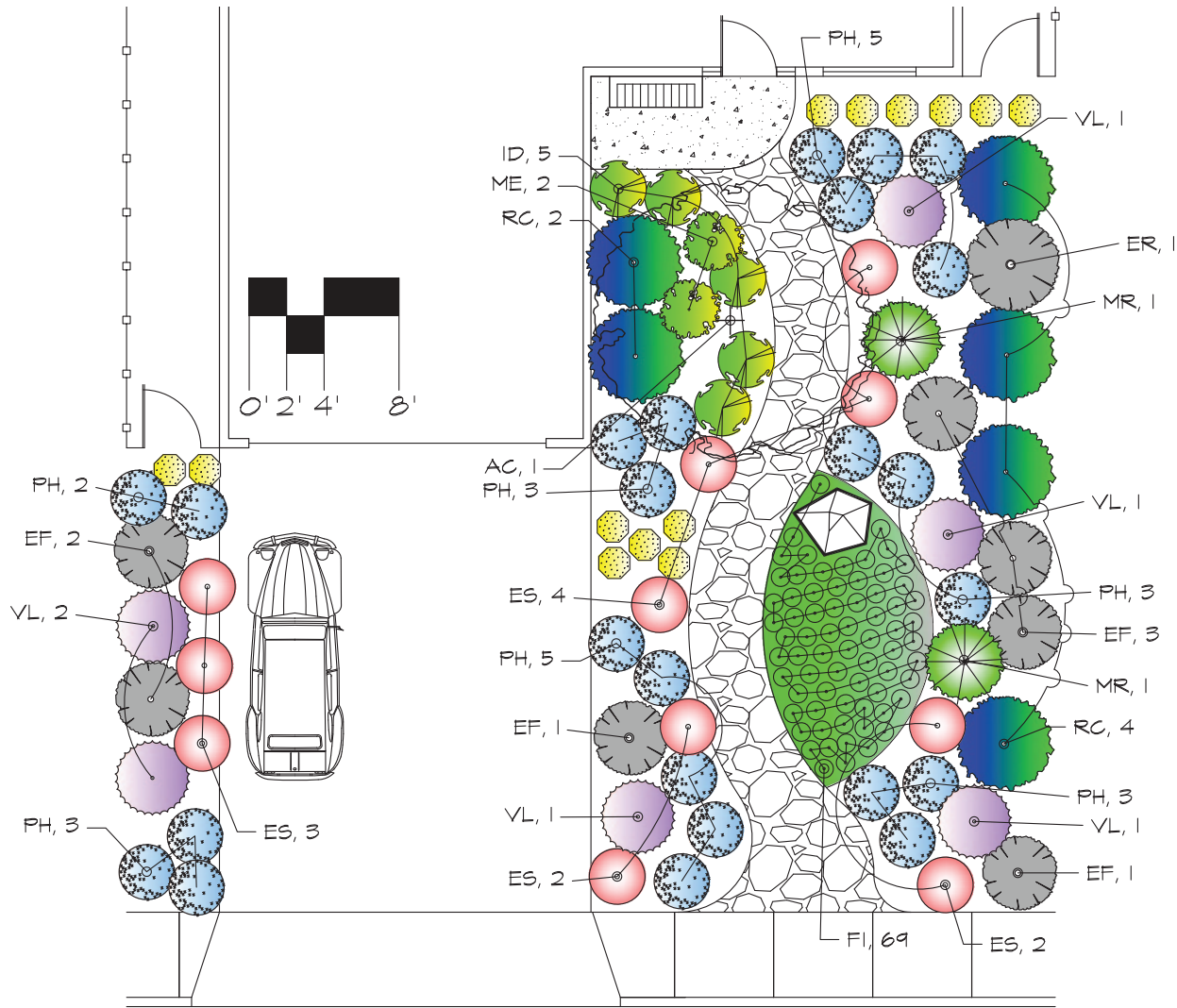


GREEN GARDENS HEALTHY CREEKS

Nectar Garden (Large, Slightly Shaded Yard)

Sustainable concept design for yards in Santa Clara Valley



Golden Aster
Heterotheca villosa



California Fuchsia
Epilobium canum 'Silver Select'



Seaside Daisy
Erigeron glaucas 'Sea Breeze'



Common Yarrow
Achillea Millefolium



Nevin's Mahonia
Mahonia nevinii

About the Concept Design Series

These designs are simple concepts to provide inspiration and ideas. Check with local nurseries, landscapers or other sustainable garden designers to help choose the best plants for your yard.

Why We Liked This Garden

Showcase Features:

This design focuses on creating a low-cost, easy to maintain garden with flowers of various colors that are welcoming to bees, butterflies and hummingbirds. The design will fit a front yard approximately 25 feet wide by 50 feet deep. This garden includes a small native grass lawn with very low water needs.

All plants are drought-tolerant California native plants with low-water needs. The diverse plant palate supports a basic pest control technique — if one of the plants has a pest or disease, it won't easily spread all over your garden. The boulders will add additional habitat diversity to encourage other types of wildlife, and will add character. Plants are spaced to allow for growth so minimal shearing or pruning is needed. Plants also stay healthier when they are not constrained by space.

If planted in place of an existing lawn, this garden design meets many eligibility criteria for the Santa Clara Valley Water District rebate. However, check with the Water District for details of their procedure and criteria before planning your garden.

Plants:

The broad, purple Seaside Daisies provide perfect resting place for butterflies. The Redberry will grow berries to invite birds to your garden. The Nevin's Mahonia bush blooms scented light-yellow flowers in March that are loved by hummingbirds. The evergreen, drought-tolerant Hollyleaf Cherry will have white flowers and red berries in fall. The California Bush Anemone "Elizabeth" variety will bloom sweetly scented, yellow-streamed, white flowers in early summer. The Common Yarrow will provide an interesting twist on your grassless lawn area, and will use low water and grow in partial shade condition.

Light:

This design needs sun, but some plants will tolerate part to full shade.

Nectar Garden Plant Legend (Large, Slightly Shaded Yard)

| Symbol | Botanical Name | Common Name | Size | QTY | Notes (tall x wide) |
|---------------------|--|-------------------------|-------|-----|---------------------|
| Trees | | | | | |
| AC | <i>Prunus ilicifolia</i> | Hollyleaf Cherry | 5 Gal | 1 | Native, 20'x10' |
| Shrubs | | | | | |
| RC | <i>Carpenteria californica</i> 'Elizabeth' | California Bush Anemone | 1 Gal | 23 | Native, 6'x6' |
| Perennials | | | | | |
| EF | <i>Salvia spathacea</i> | Hummingbird Sage | 1 Gal | 5 | Native, 2'x 4' |
| ES | <i>Epilobium canum</i> 'Silver Select' | California Fuchsia | 1 Gal | 11 | Native, 1' x 3' |
| PH | <i>Erigeron glaucus</i> 'Sea Breeze' | Seaside Daisy | 1 Gal | 36 | Native, 1' x 2' |
| MS | <i>Mimulus</i> 'Eleanor' | Sticky Monkeyflower | 1 Gal | 2 | Native, 3' x 3' |
| MR | <i>Festuca californica</i> | California Fescue | 1 Gal | 13 | Native, 3' x 3' |
| ID | <i>Heterotheca villosa</i> | Golden Aster | 1 Gal | 6 | Native, 1' x 3' |
| VI | <i>Rhamnus crocea</i> | Redberry | 1 Gal | 3 | Native, 5' x 5' |
| ER | <i>Mahonia nevinii</i> | Nevin's Mahonia | 1 Gal | 1 | Native, 6' x 8' |
| Groundcovers | | | | | |
| FI | <i>Achillea millefolium</i> | Common Yarrow | 1 Gal | 69 | Native, 1' x 2' |

These planting designs are best not used within 3-5 miles of natural areas containing local native plants in order to protect native plant species.

Sustainable Gardening Resource List

For general installation, understanding of sustainable gardens, and other details, read the factsheets in the Green Gardens Healthy Creeks series. Each of those factsheets provides in depth information to guide homeowners through the process of installing sustainable gardens.



Funding for this project has been provided in full or in part through a grant awarded by the Department of Pesticide Regulation (DPR). The contents of this document do not necessarily reflect the views and policies of the Department of Pesticide Regulation, nor does mention of trade names or commercial products constitute endorsement or recommendation for use.

In accordance with the Americans with Disabilities Act, City of San José Environmental Services Department materials can be made available upon request in alternative formats, such as Braille, large print, audiotape or computer disk. Requests may be made by calling (408) 945-3000 (Voice) or (800) 735-2929 (CRS).

Printed on recycled paper. 0912/Q300/JY

Watering Needs:

All of the plants in this garden have low water needs. Once plants are well established, summer water may not be needed. When occasional summer water is provided, many native plants may extend their blossoming period. Overwatering natives can cause death by root rot, or branches to die back from fungal diseases.

Construction Notes for Sustainable Landscaping

- Evaluate lighting condition in your garden carefully to match the sunlight needs of these plants.
- Avoid weeds by placing sheets of newspaper or cardboard boxes (sheet mulch) under the whole garden.
- Cover planted areas with woodchip mulch to retain soil moisture and prevent weed growth.
- Add high quality compost to improve soil health, drainage, and moisture retention.
- Even though your garden may look a little sparse in the beginning, the plants will fill in as they mature. The mature size of the plants is given in the plant list.
- Use recycled materials when possible, such as reclaimed brick for the pathways in this design.
- For pathways and patio, select permeable materials like pervious paver blocks, bricks, gravel, decomposed granite, or pervious concrete. Set pavers in sand and/or base rock instead of mortar to allow water to percolate into the soil.
- Use rainwater by diverting your downspouts into your garden.
- Retrofit sprinklers to drip irrigation. Rebates are available from Santa Clara Valley Water District for upgrading inefficient irrigation hardware.
- Grade soil so water drains away from the foundation of the house.
- Consider placing furniture in your front yard that allows active use of the yard.
- When landscaping close to creeks, sloughs, lakes, wild land parks, and open spaces, please consult with a designer familiar with California plant ecology and the precautions necessary to protect these wild lands.