



Family Camp at Yosemite January 2016 Master Development Plan



**A Partnership
between the
U.S. Forest Service
and the
City of San José**

PROJECT PLAN DOCUMENT

MASTER PLAN APPROVAL BY THE CITY OF SAN JOSÉ

On October 30, 2012, (Item 5.1) the San José City Council adopted Resolution # 76467 regarding the Mitigated Negative Declaration prepared for the Family Camp at Yosemite (Family Camp) Master Development Plan (File No. PP11-057) as being complete and in compliance with the California Environmental Quality Act. At this time, City Council also approved the Family Camp (at Yosemite) Master Plan regarding possible repairs and/or enhancement/improvement projects to this City facility located on Federal land in the Stanislaus National Forest. This in turn authorized the submission of the Master Plan to the U.S. Forest Service, with Alternative Two in the Master Plan being the preferred option of the City.

PREPARED FOR:

Groveland Ranger District
Stanislaus National Forest
United States Dept. of Agriculture
24545 Highway 120
Groveland, California 95321

Forest Supervisor
Stanislaus National Forest
United States Dept. of Agriculture
19777 Greenley Road
Sonora, California 95370-5909

PREPARED BY:

The City of San José
Parks Recreation and Neighborhood Services
200 East Santa Clara Street, 9th Floor
San José, California 95113



*Parks, Recreation and
Neighborhood Services*




**Family Camp
at Yosemite**

**A
Partnership
between
the
U.S. Forest
Service
and the
City of
San José**



TABLE OF CONTENTS

CONTENTS	PAGE	CONTENTS	PAGE
Table of Contents	3	Camp Maps & Plans	31
		Brochure Map	33
Introduction	5	Proposed 2 Story Building	34
		Proposed Amphitheater Changes	36
Background		Proposed ADA Improvements	37
Camp History	6	Proposed Solar Carports	38
Natural Setting	7		
Camp Operations	8		
Camp Recreation	9		
Facilities Review	11		
Resource Management	15		
Proposed Project Improvements	21		
Proposed Projects List	28		



**Family Camp
at Yosemite**

**A
Partnership
between
the
U.S. Forest
Service
and the
City of
San José**



Middle Fork of the Tuolumne River

This Master Development Plan (MDP) has been developed and prepared to ensure a high quality outdoor recreational experience for visitors to Family Camp and to direct future renovations and improvements to Family Camp proposed by the City of San José. It will provide guidance to ensure that Family Camp will continue to be a very special place, for generations of campers, to experience this unique camp vacation facility within the forest.

Upon approval by the Forest Service, this MDP becomes part of the Special Use Permit (SUP) to allow the city to operate Family Camp. The MDP will also provide the basis for facility repairs, renovation and replacement. As MDP repair, renovation and replacement projects are planned and scheduled, specific design plans will be submitted for review and approval by the Stanislaus National Forest (STF) Authorized Officer. The MDP will be used jointly by the Forest Service and the City to monitor compliance during project implementation and to ensure new recreational offerings are consistent with the authorized use.

Camp Location:

Family Camp is situated on 46.8 acres located on the Groveland Ranger District of the Stanislaus National Forest (U.S. Forest Service). It is located at 11401 Cherry Lake Road, in Groveland, California. A Special Use Permit authorizes the occupancy and use.

Camp Capacity:

Family Camp can sustain up to 390 campers per night, with a support staff of approximately 40 to 60 seasonal employees and volunteers, for a maximum daily number of 450 individuals.

Camp Mission:

To provide and preserve a quality, family-oriented forest camping experience, at a reasonable rate for family memories to be made, and to expose campers to the forest environment located within the Stanislaus National Forest.

Camp Goal:

Provide an all-inclusive, family camping experience and encourage the study and enjoyment of nature.



**Family Camp
at Yosemite**

**A
Partnership
between
the
U.S. Forest
Service
and the
City of
San José**

BACKGROUND



Family Camp at Yosemite

A
Partnership
between
the
U.S. Forest
Service
and the
City of
San José

Camp History

The site for Family Camp was located just upstream from a work camp used for the Hetch-Hetchy Valley/O’Shaughnessy Dam Project by the City of San Francisco. The Camp was also located near a stopover site along the Hetch-Hetchy Railroad, which served as both passenger and freight service from 1917 through 1938. The City of Oakland leased this Tuolumne River site from the Forest Service as a camp in 1920, and constructed the first municipal camp in California, which opened in 1921. Activities at the camp included nature studies, hiking and swimming in a pool of river water formed by the annual installation of flash boards in the Middle Fork of the Tuolumne River, thus creating a small dam structure, which is still used today during Family Camp’s summer season. Meals were provided in a central dining hall, as is the case today.

In the 1960s, the City of Oakland announced that their municipal camp was up for sale, and the City of San José subsequently engaged with Oakland to purchase the Tuolumne River Camp Site. San José’s City Council authorized the City to submit a bid to acquire the Oakland Camp facilities in November of 1967, for a purchase price of \$75,000.

Family Camp at Yosemite by the City of San José opened its first camping season in 1968, after obtaining its first special use permit authorizing the occupancy and use of STF lands. In 2012, the City of San José obtained a 5-year Special Use Permit with the Forest Service to continue to operate the site as a recreational family camp.

The City modified the name “San José Family Camp” to “Family Camp at Yosemite” to bring reference to the facility’s location and to inform the public the facility is available for all campers, not just residents of the City of San José.

Natural Setting

Lying mid-point along the Sierra Nevada Mountain Range, Family Camp is located in Tuolumne County, approximately halfway between Groveland, California and the northern entrance to Yosemite National Park, on Highway 120. Family Camp at Yosemite is nestled within the pine and oak trees, along the banks of the Middle Fork of the Tuolumne River, within the Stanislaus National Forest.



Located at 2,850 feet above sea level, Family Camp enjoys cool winters and warm summers. Fall and spring seasons are particularly attractive, with mild temperatures and generally pleasant weather. The summers are mostly dry, except for the occasional thunderstorm, with temperatures averaging 65 degrees Fahrenheit in the evenings to 96 degrees Fahrenheit during the day. Winter temperatures range from 39 degrees Fahrenheit in the evenings to 55 degrees Fahrenheit during the day, with the possibility of light snowfall during the late fall and winter months. Most of the precipitation at Camp is from rain. In the spring,

due to melting snow from the higher elevations, The Middle Fork of the Tuolumne River rushes particularly strongly through Camp.

Family Camp's topography is characterized by two forested ridges, which are separated by the Middle Fork of the Tuolumne River. The Camp's land is quite irregular with slopes ranging from 5% to 50%, sloping toward the river. There are three fairly flat areas in the Camp; 1) the main camp complex area, consisting of the dining hall and camp store, is one locale defined by fill associated with a retaining wall along the river; 2) the sandy beach is another filled area with a retaining wall along the river; and 3) the grass meadow, where recreational activities like softball, tug-a-war and the campfire talks take place.



**Family Camp
at Yosemite**

**A
Partnership
between
the
U.S. Forest
Service
and the
City of
San José**

BACKGROUND



Family Camp at Yosemite

A
Partnership
between
the
U.S. Forest
Service
and the
City of
San José

Camp Operations

Family Camp provides an annual operations plan to the Forest Service, which includes programming, maintenance and operational information for the upcoming season. Family Camp operates from mid spring to mid fall. The summer program runs daily from the middle of June through the middle of August, with complete in-house meal services and a variety of structured recreational and interpretive activities. During the spring pre- and fall post-seasons, Camp is available for private rentals and typically hosts community organizations such as YMCA, Scouts, schools, and special interest groups.

Summer reservations are made on line, and occupancy ranges from 100 to 300 campers per night, with 40 to 60 seasonal employees and volunteers on-site. The San José Job Corp, and local colleges and universities, are the major sources for seasonal employees. Most of the volunteers are associated with the Friends of San José Family Camp, an auxiliary organization, dedicated to providing a quality family-oriented camping experience in partnership with the City.

***FRIENDS OF SAN FAMILY CAMP IS A VOLUNTEER
ORGANIZATION DEDICATED TO PROVIDING AND PRESERVING A
QUALITY, FAMILY-ORIENTED SIERRA CAMPING EXPERIENCE***

■ 1300 SENTER ROAD ■ SAN JOSE ■ CALIFORNIA ■ 95112 ■



Camp Recreation

Family Camp provides a valuable service to families, young people, youth at risk and individuals with disabilities by promoting activities conducted in a natural environment.

Upstream from the dining hall complex, there is a small temporary dam structure from the Oakland era. The City installs temporary flash boards in this dam to create a swimming area in the river for the summer session. Lifeguards are on duty during all scheduled swimming hours and there is a roped-off, shallow area for children and beginning swimmers. Adjacent to this swim area is a sandy beach and lawn area for sunbathing.



At the Fort Tuolumne playground, supervised childcare and special activities are provided for the young campers.

In other areas of the Camp, there is a volleyball court, a softball diamond, a basketball court, a fish cleaning station, an amphitheater, a nature center, a nature oriented arts and crafts center, two bocce ball courts, a horseshoe pit, bolo ball, a gaga ball pit, a campfire circle and an archery range.

Camp also facilitates all inclusive, multi generational group games and activities, such as 9 Square in the Air, Team Twister, Magic Castle Wars, orienteering, slacklining, gold panning, log rolling, and various hikes.

The main recreational feature of Camp is the river and the surrounding forest lands.



**Family Camp
at Yosemite**

**A
Partnership
between
the
U.S. Forest
Service
and the
City of
San José**



Archery Area in the Meadow

Facilities Review



FACILITIES REVIEW



**Family Camp
at Yosemite**

**A
Partnership
between
the
U.S. Forest
Service
and the
City of
San José**

Camp Facilities

Today, there are 70 wood frame and canvas covered platform-tents scattered among the pines and oaks throughout Camp. Each platform-tent contains up to six cots with mattresses (no bedding), benches, a table and bookshelf. All platform-tents have decks for outdoor relaxation. Electrical outlets are available in 23 of the platform-tents. ADA accessibility includes eight tents, accessible restrooms and ramps into the main building.

There are currently five platform-tents used to house the Friends of San José Family Camp, volunteer nurses and/or City employees as support staff for running Camp.

Staff housing consists of a three bedroom house for the camp manager, and a cabin for the assistant manager. There are 12 seasonal staff cabins located on the hillside along the dining hall and another 14 located across the river near the swimming area.

There are four fully equipped restrooms, which are just a short walk from any of the camper platform-tents. All restrooms have hot showers, toilets, washbasins, with public washers and dryers at three of the locations. There are electrical outlets in all restrooms. Another public restroom supports the main camp area and two more restrooms are for camp staff use only.

The main building consists of the dining room, kitchen, recreation room, camp office and a medical aid station. The camp store and a public restroom building, along with other storage and mechanical buildings, define the Family Camp's main complex of buildings, with a broad, shaded terrace and deck overlooking the river. Additional buildings include the amphitheater, the arts and crafts lodge located in the meadow area, the nature center located near the swimming area and a carport near the manager's house.

FACILITIES REVIEW

The camp has two pedestrian and one vehicular bridges crossing the river. All three bridges are steel framed with wood planking. There is a concrete ford crossing in the river just west of the vehicular bridge.

Sixty-five parking spaces are provided throughout the tent areas for campers to use, with parking available for staff near the service entrance. All parking areas are either gravel or bare earth, except for the vehicle spaces behind the dining hall, which are paved. All access roads are mostly paved.

Camp utilities include three PG&E service meters, AT&T landlines for phone service, two potable wells for the water supply systems, a non-potable water system for fire protection and toilet flushing and a self contained sewer system. The sewer system consists of underground piping, a sewer lift system, pump station, a treatment pond and a spray field.



Guest Tent



**Family Camp
at Yosemite**

**A
Partnership
between
the
U.S. Forest
Service
and the
City of
San José**

Resource Management





Upper Pedestrian Bridge Over the Middle Fork of the Tuolumne River

RESOURCE MANAGEMENT

From a social and cultural perspective, Family Camp has been a tradition and rite of passage for many generations. Family Camp is dedicated to being a steward of this spectacular forest setting, making it a priority to protect and maintain its natural surroundings for future generations to enjoy.

Wildlife Habitat and Management - The Stanislaus National Forest (STF) provides habitat for over 300 wildlife species and 18 fish species, including threatened, endangered and sensitive species like the California Spotted Owl. Many of these species pass through Camp. Depending on the water level in the river, the local fish hatchery regularly stocks the Middle Fork of the Tuolumne River, which runs through the middle of Camp, with both brown and rainbow trout. Camp currently houses all trash in a 20 yard bear-proof container and plans to install small bear-proof trash containers and bear-proof food lockers throughout camp. Camp continues to construct, hang and maintain several bat boxes throughout the facility.

Water Supply System - Camp has two separate water supply systems. The camp potable water is derived from two water wells, which fill two 10,000 gallon green poly storage tanks near the well site, and a 10,000 gallon tank on the opposite side of camp. A non-potable water system is used for fire protection and flushing toilets. This water is drafted from the river at two separate points and delivered to three separate tanks, varying in size. Care is taken to deliver a conservation message to staff and guests regarding water use. Water quality and usage is measured daily.

Fire and Fuel Management - Family Camp holds a burn permit from the Forest Service. Camp adheres to the permit conditions and takes precautions to minimize particulate emissions. Camp continues to work with STF Foresters to reduce fuel, and identify, manage and remove fire damaged and hazard trees.



**Family Camp
at Yosemite**

**A
Partnership
between
the
U.S. Forest
Service
and the
City of
San José**

RESOURCE MANAGEMENT



Family Camp
at Yosemite

A
Partnership
between
the
U.S. Forest
Service
and the
City of
San José

Vegetation Management - Care is taken to identify noxious weeds and manage them with Forest Service recommendations. The Rim Fire of 2013 damaged over 800 trees located within the permit boundaries. Assessment and removal of these trees is ongoing and monitored in partnership with the Forest Service Foresters on a bi-annual basis. Planting of new native trees within the Camp burn areas has been approved. Erosion control is emphasized on hillsides affected by the fire, including the use of sandbags, wattle and a product called Gorilla Snot.



Historic Grinding Stone

Cultural Resource Protection - The Camp is located on a sensitive archeological site. Self-standing wood fences surround two grinding stone sites with posted educational information. Flags are subtly located throughout Camp to indicate to staff that work in those areas needs special precaution. Local tribe members and representatives are notified before any digging takes place on site, as digging in certain areas can require monitoring by an archeologist.



Vegetation Near Child Swings

Proposed Projects





Guest Tents

PROPOSED PROJECTS

The City of San José’s proposed projects would hold Family Camp to its current camper capacity of 65 rentable tents with up to six bunks per tent. No additional staff and/or volunteers housing quarters will be added, except for the possible replacement of the two tents lost in the 1999 Pilot Fire. The daily capacity will remain at 450 individuals (guests, staff and volunteers).

After the City has obtained formal MDP approval from the Forest Service, and as funding permits, the City could begin development of project plans to implement the work identified in the approved MDP. For discussion/conceptual planning purposes, the following three categories of Proposed Projects have been listed on pages 28 - 29: A. Routine Annual Tenant Improvements (No Ground Disturbing Activities); B. Heavy Major Maintenance Projects (May Include Ground Disturbing Activities); and C. New Facilities/Development (Potential New Ground Disturbing Activities).

Category A proposed projects (Routine Annual Tenant Improvements) can generally be performed without Forest Service approval as long as no ground disturbing activity takes place. For Categories B and C, the City will notify the Forest Service each year regarding what major maintenance projects or new projects are being scheduled along with any environmental work proposed for the coming year. The City will obtain both Forest Service approval and other regulatory Agency approvals prior to implementation of any Category B or C project work.



Flash Board Dam



Nature Center



**Family Camp
at Yosemite**

**A
Partnership
between
the
U.S. Forest
Service
and the
City of
San José**



Camp Office / Dining Hall

PROPOSED PROJECTS

Proposed Projects

Dining Hall - The proposed project would replace the existing dining hall/office building with a new two story dining hall/nature center building on the same footprint as the existing building. The removal of the existing dining hall/office building gives the City the opportunity to construct a building that would increase the interior dining capacity. It would also provide an enhanced kitchen and food storage areas, restrooms, a first aid station, and reception office on the first floor. The second floor would be a nature center facility with a multipurpose room, a lounge/library, staff office space, restrooms and storage spaces. The multipurpose room could be divided in two rooms, which could seat approximately 60 in each section. The second story nature center would provide 5,700 additional square feet to educate campers and others to environmental stewardship through interpretive/art programs.

Dining Hall Deck/Porch - The City is proposing to increase the size of the existing deck to its original configuration and incorporate access ramps and stairs to the revised deck/seating porch as shown on page 34 and 35. Current wheelchair access to the deck is through the dining hall. Exterior ADA access from the terrace along the river edge to the deck is required.

Guest Camper Tents and Staff Quarters - All tents will be repaired as needed, including the replacement of tent canvasses. The City is in process of changing out the guard rails of the tent decks. Accessible improvements should be made to 20% of the rental tents. All of the tents should be connected to electrical power. Staff Quarters, including the caretaker's residence, the manager cabin and the other staff units, will be repaired, renovated and enhanced as needed. At least two of the staff units on the north side of the river will be made accessible by ramps to the ground level and to the existing staff accessible restroom building.

Play Area -The play area would be renovated by replacing the existing play equipment and providing resilient surfacing as required by the California Playground Standards and/or suggested by the playground equipment manufacturer. The resilient surfacing material would also provide ADA access to the play equipment.



**Family Camp
at Yosemite**

**A
Partnership
between
the
U.S. Forest
Service
and the
City of
San José**

PROPOSED PROJECTS



Family Camp at Yosemite

A
Partnership
between
the
U.S. Forest
Service
and the
City of
San José

Sierra Lodge and Camp Store Buildings - Both of these buildings will be renovated, and/or replaced in their current locations, with no additional square footage added. The City may add a kitchen component to the interior of the Sierra Lodge, in order to operate Camp when the dining hall / office building is being replaced. The Camp Store may be upgraded to provide additional recreational activities, in addition to selling miscellaneous sundry items.

Camp Amphitheater - The amphitheater and a portion of the main entrance road were built in a drainage way, which carries runoff from an area estimated at 150 acres of forest lands. The City is proposing a rock lined drainage overflow diversion adjacent to the amphitheater, to carry excess runoff water around the amphitheater. The use of poured-in-place concrete, to create seating steps, would be one way to correct the outdoor amphitheater seating problem associated with the existing bleachers in need of replacement. The use of rock boulders could soften the appearance of hard edges. A new access pathway to the top viewing area should be constructed to provide ADA access. Replacement of the deteriorating stage building is in order.

Camp Restrooms - Six of the seven stand alone restrooms are currently accessible on the inside. Improvements will be made to make the exterior routes accessible to near by camper platform-tents. All restrooms will be repaired as needed, renovated and/or replaced.

Sandy Beach - The sandy beach would be re-contoured to reduce sediment loading into the river, by using sediment/debris separators to collect runoff.

Bear-Proof Containers - Bear-proof trash containers and bear-proof food lockers will be installed.

ADA Access - Proposed additions and improvements may include the construction or improvement of existing paved pathways and wooden ramps to restrooms, guest tents, staff cabins, the amphitheater and dining hall .

New Facilities - The only new structures proposed, beside the Dining Hall/Nature Center, are the two solar carports, the enclosure of the carport into a garage, two recreational zip-lines and an additional off-site water tank.



Sandy Beach

PROPOSED PROJECTS



Family Camp at Yosemite

A
Partnership
between
the
U.S. Forest
Service
and the
City of
San José

Routine Annual Tenant Improvements (No Ground Disturbing Activities):

1. Annually install and remove the Flash Board Dam and renovate as needed.
2. Installation of Bear-Proof Food Lockers on each Tent Deck.
3. Renovate Miscellaneous Tool and Equipment Sheds as needed, at existing locations.
4. Renovate the Camp Store at its existing location.
5. Renovate the Campfire Ring at its existing location.
6. Renovate the Caretaker's House at its existing location.
7. Renovate the Manager's Cabin at its existing location.
8. Renovate the Nature Center at its existing location.
9. Renovate the Sierra Lodge at its existing location.
10. Renovate the Staff Recreation Lounge at its existing location.
11. Renovate the Three Bridges over the river as needed.
12. Renovate the Restrooms as needed, include accessible improvements.
13. Renovate existing Staff Cabins as needed, at existing locations.
14. Renovate Tents as needed, at existing locations, including trap replacement.
15. Periodically have an Arborist/Forester review trees and prepare a Hazard Tree Plan and implement such work.
16. Periodically have a Biologist check for noxious weeds and prepare a Noxious Weed Removal Plan and implement such work.

Major Maintenance Projects (May Include Ground Disturbing Activities):

1. Bring the existing second Potable Water Well on line.
2. Renovate existing River Retaining Walls as needed.
3. Renovate the Amphitheater at its existing location, include ADA access improvements.
4. Renovate the Children's Play Area at its existing location.
5. Renovate existing Asphalt Pavement as needed, including accessible/drainage improvements.
6. Repair and/or replace Utility Lines - water, sewer, storm, electrical, lights and intercom.
7. Full Replacement of the existing Dining Hall/Office Building with a two story building on the same footprint as the existing building and set bottom floor at a higher elevation. Incorporate new Ramps and Stairs to access/exists the higher building. The proposed building would increase the dinning capacity and provide additional rooms (pages 34-35).

PROPOSED PROJECTS

New Facilities/Development (Potential New Ground Disturbing Activities):

1. Installation of up to 28 Bear-Proof Trash Containers throughout Camp on concrete pads.
2. Install two new horseshoe pits, in lieu of the two old courts removed from the Island.
3. Make additional Guest Tents accessible by adding access ramps.
4. Install a rock-lined overflow channel around the existing Amphitheater.
5. Make two Staff Tents accessible by adding access ramps to restroom and adjacent pathways to eastern bridge.
6. Make Pathways ADA accessible, including a new Switch Back Trail from the 100s tents to the Middle Bridge (page 37).
7. Make modifications to the Beach Area to redirect runoff to newly constructed in ground sediment separators (2 units).
8. Add two Zip-Lines from hillside near the 600's tents to over the River.
9. Install a commercial kitchen in the Sierra Lodge and connect to water and sewer lines.
10. Connect all Tents to underground electrical power.
11. Enclose the Caretaker's Carport into a Garage.
12. Extend the Retaining Wall behind Dining Hall to Recreation Storage Shed.
13. Implement a new Meadow Turf Irrigation System and/or other Landscape Improvements.
13. Increase the size of existing Dining Hall Deck/Porch to its original configuration and incorporate access ramps and stairs to the revised deck/seating porch (page 34).
14. Add a Solar Carport near the service entrance from Cherry Lake Road.
15. Add additional water tanks



**Family Camp
at Yosemite**

**A
Partnership
between
the
U.S. Forest
Service
and the
City of
San José**

Camp Maps & Plans

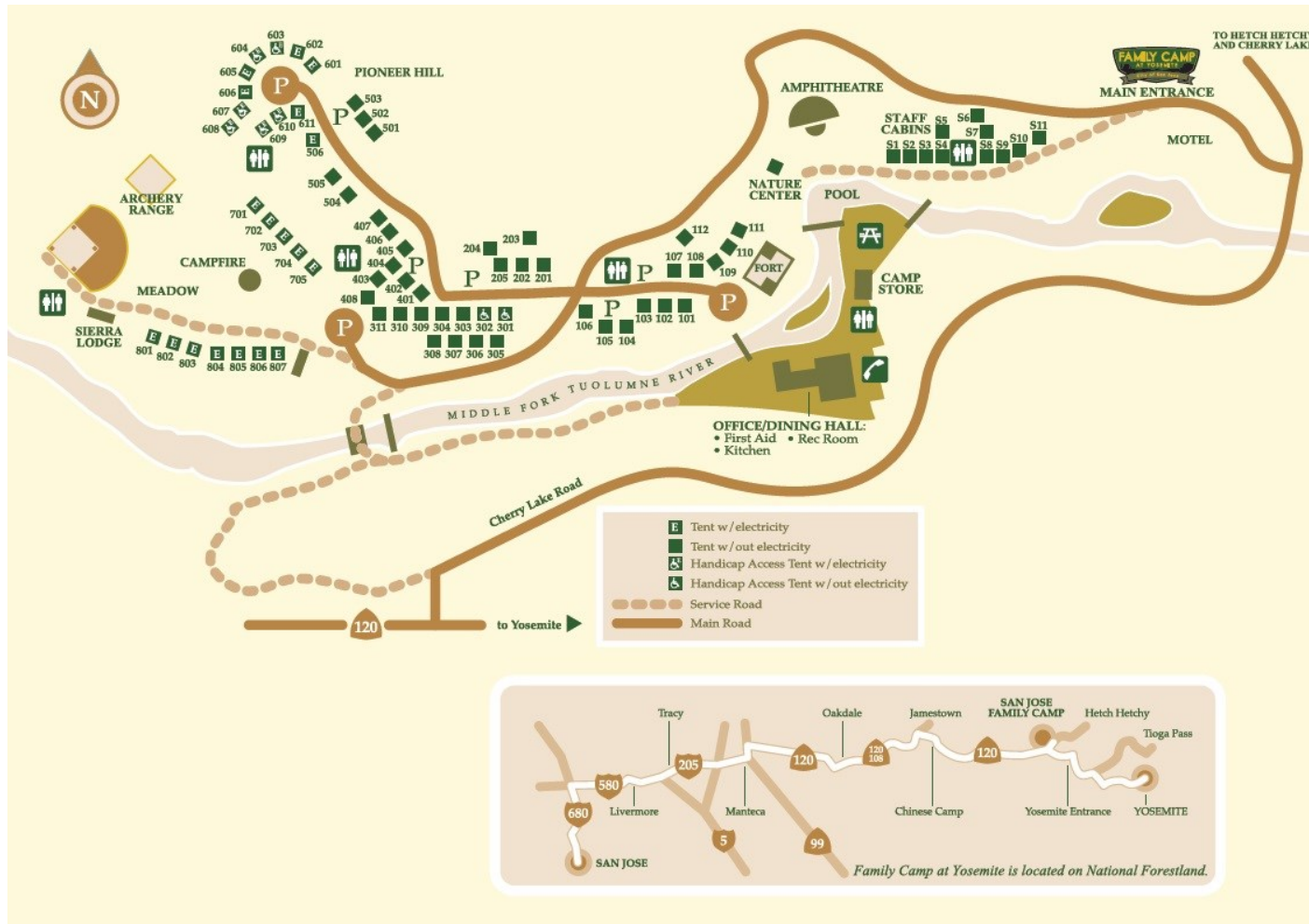




Amphitheater

CAMP MAPS & PLANS

Brochure Map of Family Camp



Family Camp
at Yosemite

A
Partnership
between
the
U.S. Forest
Service
and the
City of
San José

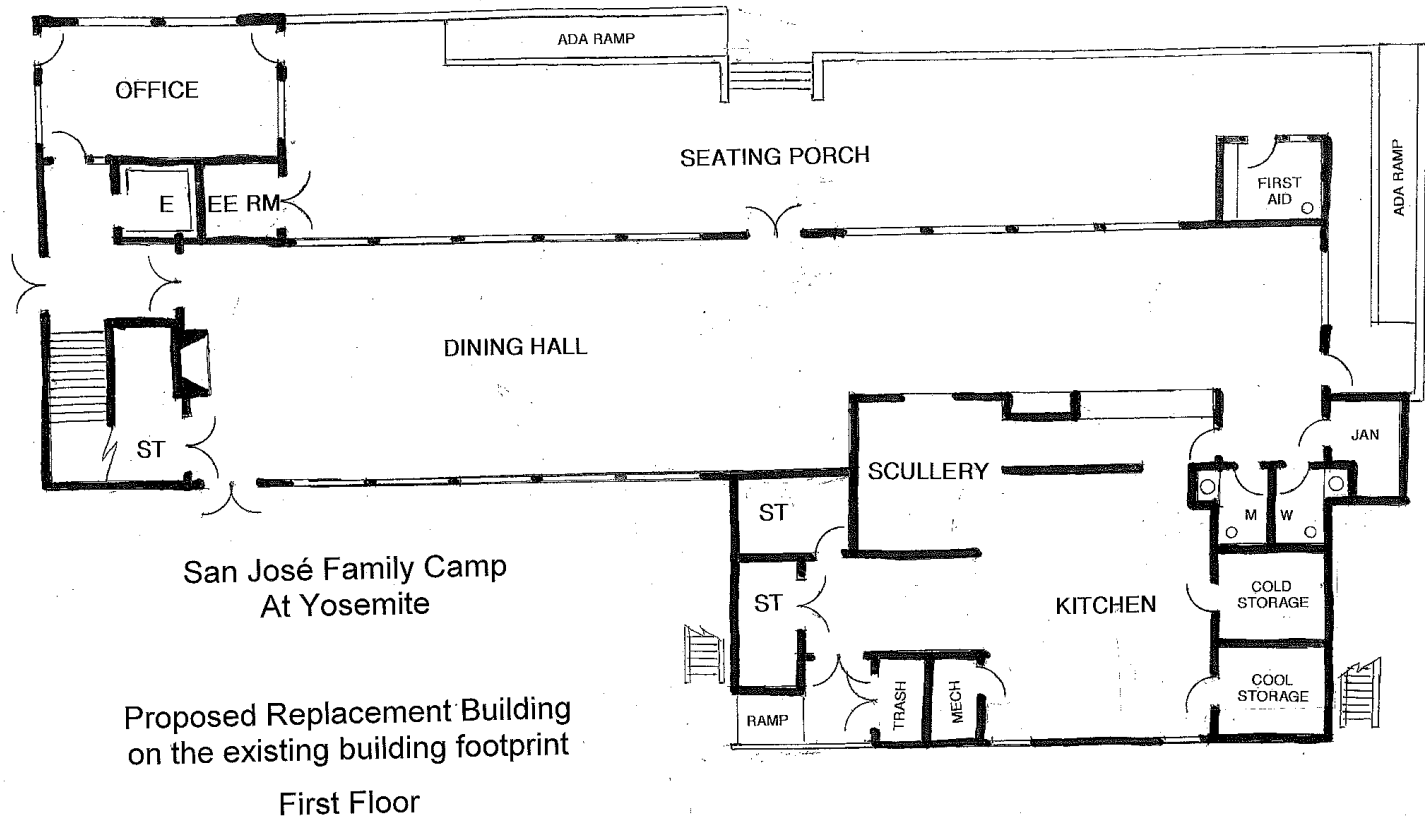
CAMP MAPS & PLANS



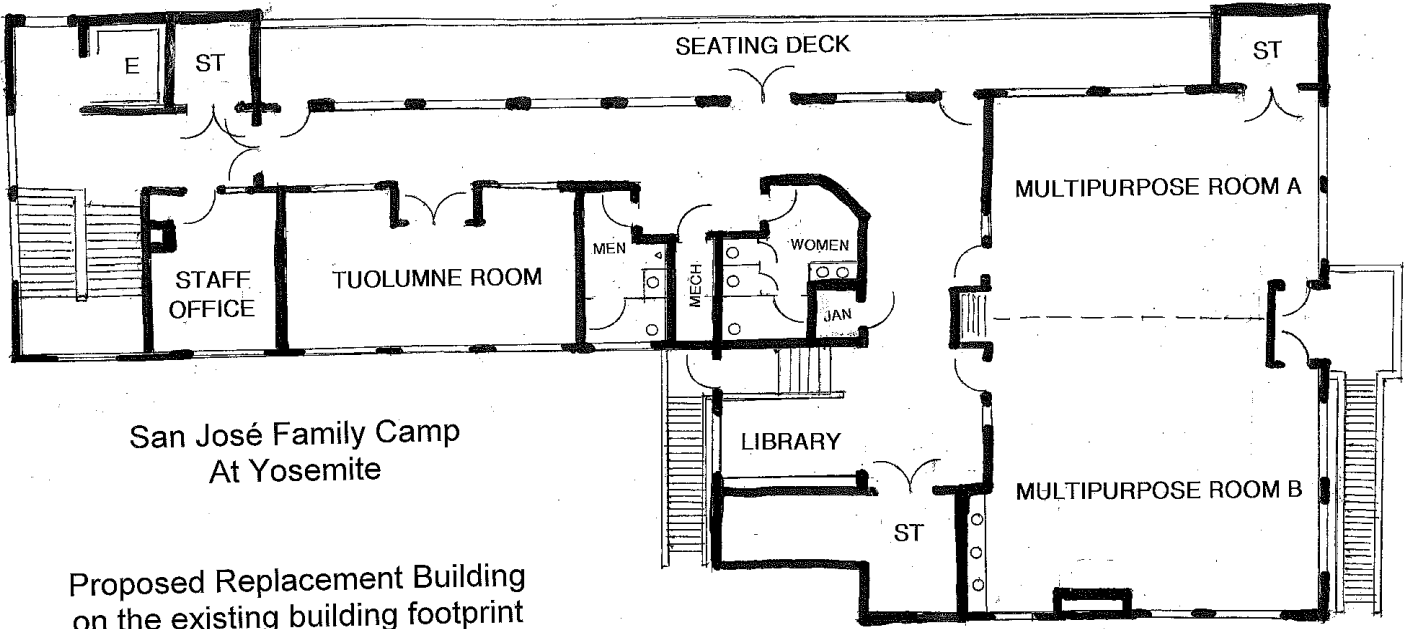
Family Camp
at Yosemite

A
Partnership
between
the
U.S. Forest
Service
and the
City of
San José

PROPOSED DINING HALL / NATURE CENTER PLAN - 2 STORIES - First Floor



PROPOSED DINING HALL / NATURE CENTER PLAN - 2 STORIES
- Second Floor



San José Family Camp
At Yosemite

Proposed Replacement Building
on the existing building footprint
Second Floor



Family Camp
at Yosemite

A
Partnership
between
the
U.S. Forest
Service
and the
City of
San José

CAMP MAPS & PLANS

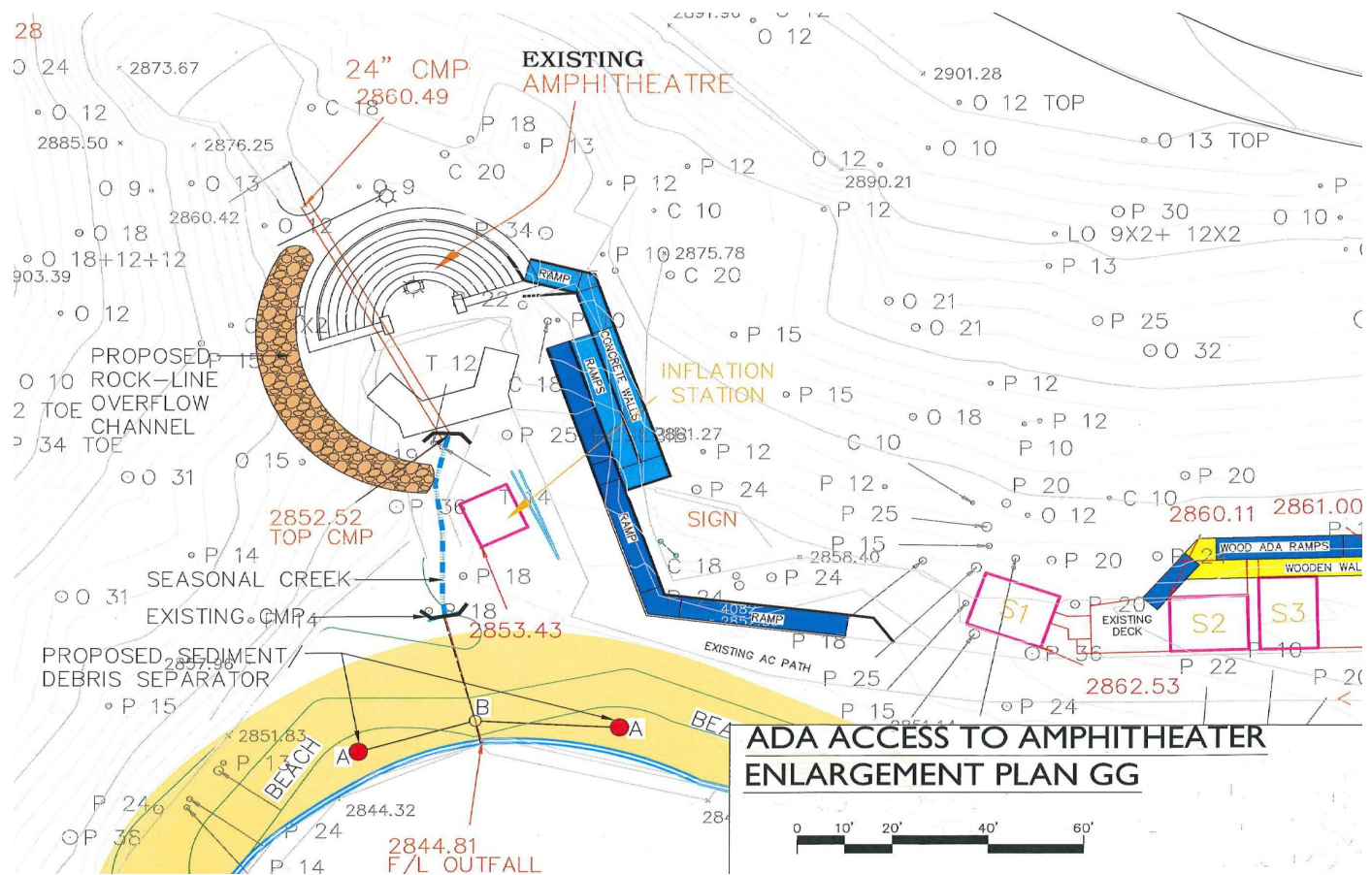


**Family Camp
at Yosemite**

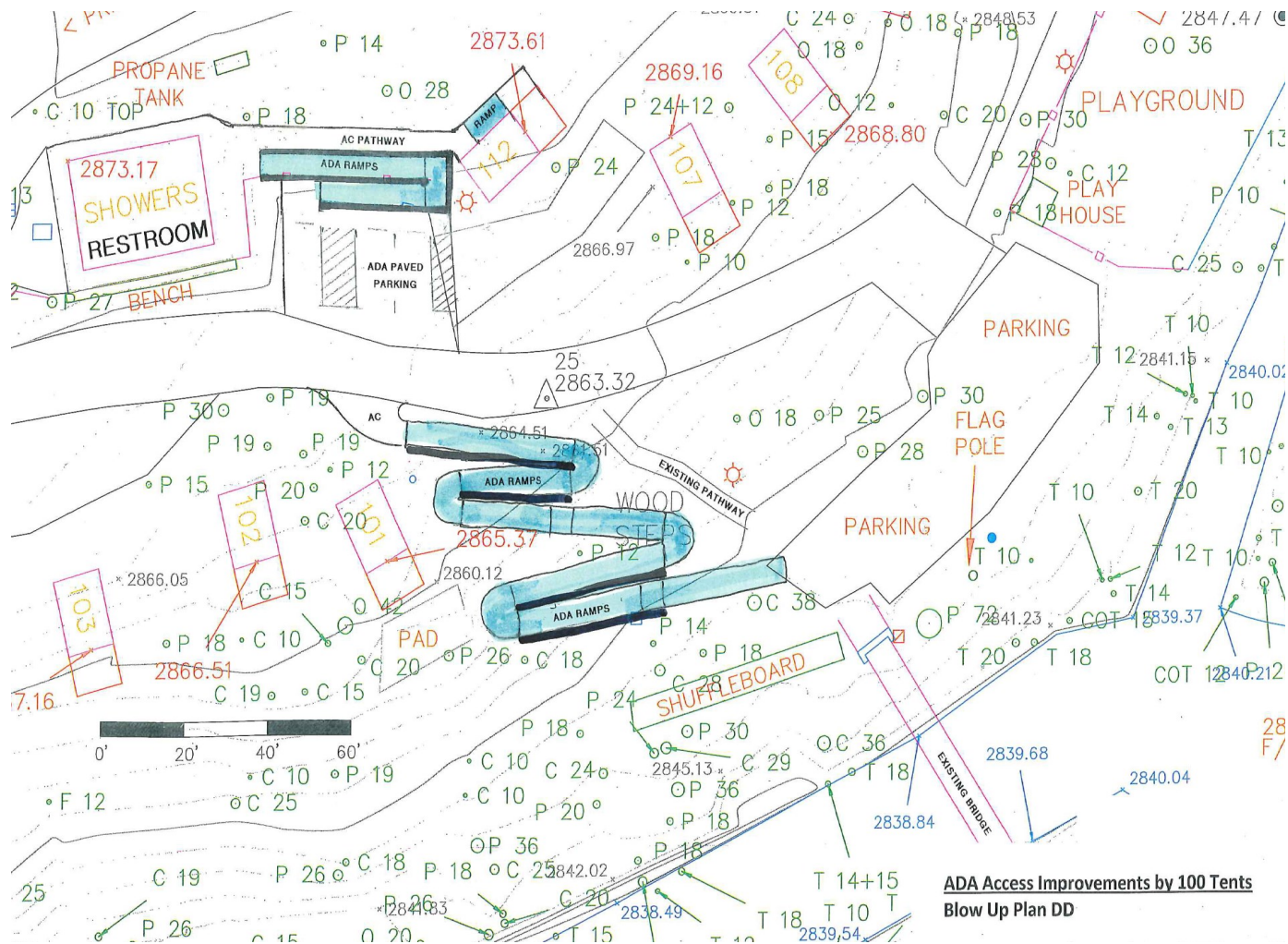
**A
Partnership
between
the
U.S. Forest
Service
and the
City of
San José**

PROPOSED AMPHITHEATER CHANGES

EXISTING AMPHITHEATER WITH MODIFICATIONS



ADA PATHWAY IMPROVEMENTS



Family Camp at Yosemite

A Partnership between the U.S. Forest Service and the City of San José

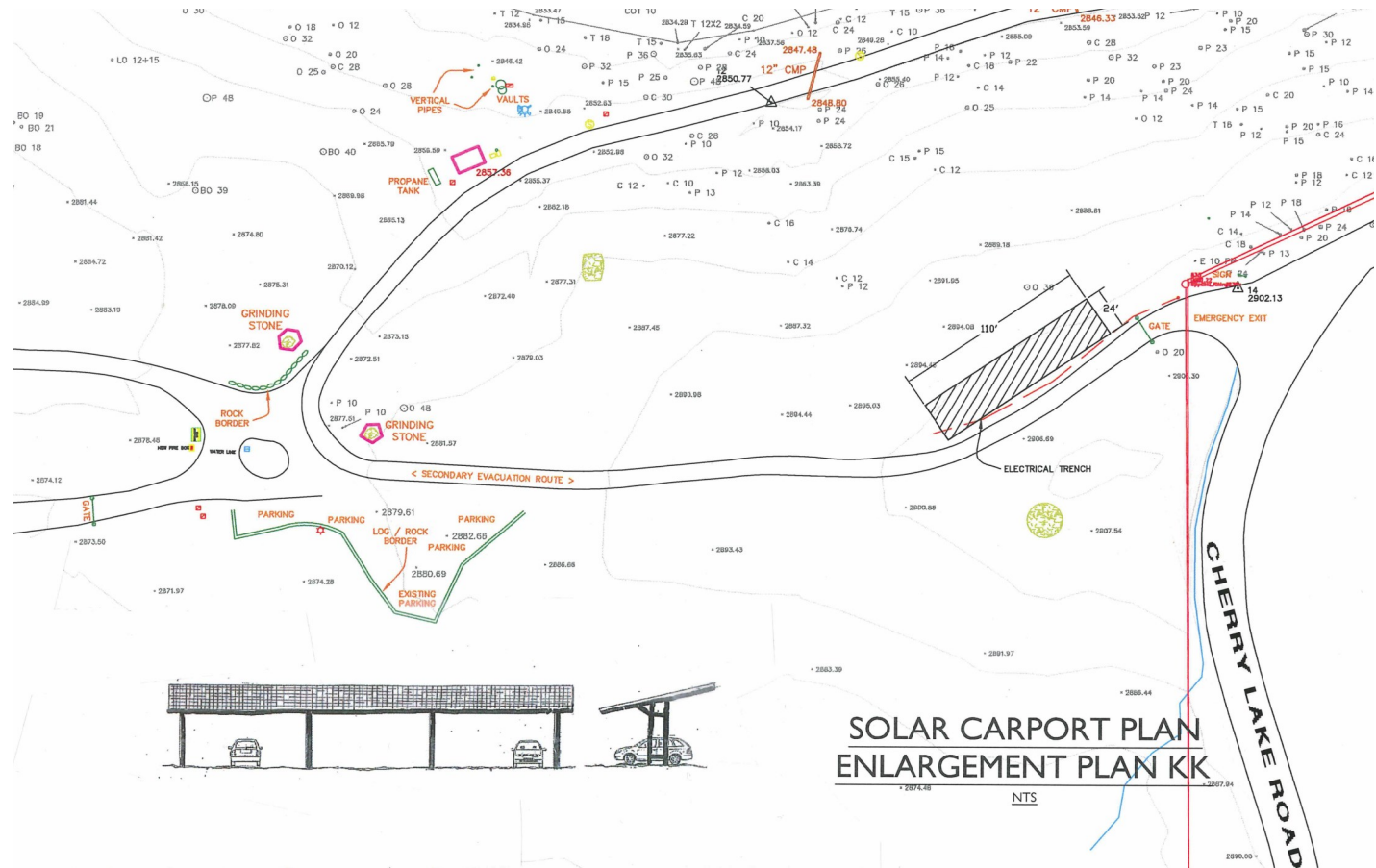
CAMP MAPS & PLANS



Family Camp
at Yosemite

A
Partnership
between
the
U.S. Forest
Service
and the
City of
San José

PROPOSED SOLAR CARPORT



SOLAR CARPORT PLAN
ENLARGEMENT PLAN KK

NTS



**A Partnership
between the
U.S. Forest Service
and the
City of San José**
