



SENT TO COUNCIL:

Distributed on:

OCT - 1 2010

by City Manager's Office
Memorandum

TO: HONORABLE MAYOR AND
CITY COUNCIL

FROM: William F. Sherry, A.A.E.

SUBJECT: MONTHLY NOISE
REPORT FOR
AUGUST 2010

DATE: September 29, 2010

Approved

Date

10/1/10

INFORMATION

Attached for distribution is the Norman Y. Mineta San José International Airport Monthly Noise Report for August 2010.

/s/ Kimberly B. Aguirre for
WILLIAM F. SHERRY, A.A.E.
Director of Aviation

Attachment

NORMAN Y. MINETA
SAN JOSE
INTERNATIONAL
A I R P O R T



Monthly Noise Report August 2010



Monthly Noise Report
Table of Contents - August 2010

| | Page |
|--|-------------|
| 1. Analysis | 1 |
| 2. Noise Complaint Section | |
| A. Noise Complaint Summary | 3 |
| B. Graph - Complaints for August 2010 by Time of Day | 4 |
| C. Graph - Complaints for Year to Date through August 2010 | 5 |
| D. Graph - Complaints by City Area - March 2010 through August 2010 | 6 |
| 3. Airline Operation Section | |
| A. Monthly Curfew Intrusions Report | 7 |
| B. Curfew (Turbojet) Report Summary/Total Operations | 10 |
| C. Curfew Operations VS Total Operations | 11 |
| D. Curfew (Turbojet) Report Summary | 12 |
| E. Monthly Airline Run-up Report | 13 |
| F. Monthly Airline Run-up Summary | 14 |
| G. Complaints | 15 |

Analysis of August 2010 Noise Data

At the direction of the City Council, the Monthly Noise Report (MNR) has been designed to present a comprehensive picture of the Airport's noise impact on the community. The Analysis Section is intended to provide an identification of significant trends relating to observed data captured in the report.

Terminology

To establish terminology consistent with the Airport Noise Control Program (**ANCP**), the following terminology is used to describe aircraft operations that occur during the curfew period. All aircraft operations occurring during the curfew are referred to as "**Intrusions**". Those intrusions that occur for reasons that are exempted in the **ANCP** (*i.e. weather, mechanical or air traffic control problems*) are defined as "**Intrusions in Compliance**" with the **ANCP**. Those intrusions that are not exempted by the **ANCP** are defined as "**Intrusions in Non-Compliance**". All turbojet curfew intrusions are identified in the **Monthly Curfew Intrusion Report** section.

In the **Noise Complaint Summary** section of the report, the subheading **Commercial Aircraft** contains the following terminology: "**Intrusion Related**" identifies the number of complaints associated with curfew intrusions. The term "**Loud Aircraft**" refers to complaints about the loudness of a particular operation. Additionally, the category titled "**Frequency**" refers to complaints about multiple operations and helps to enhance the quality of the report's data. This assists in sorting the noise report data and clarifies the nature of these complaints.

On October 21, 2003, San Jose City Council approved Ordinance No. 27000 to preserve the existing nighttime noise environment by restructuring the "Curfew" from a weight-based to a noise-based curfew and adding provisions for fines and penalties. The Monthly Noise Report will now reflect the issuance of Administrative Citations as part of the curfew. The statement "**under investigation**" means the operation is in the process of being investigated for curfew compliance; the statement "**citation issued**" means a citation was issued for a non-compliant operation. Additionally, the statement "**under appeal**" means a citation is scheduled for an appeal hearing and no disposition is known; the statement "**citation overturned**" means a citation has been officially overturned by the Airport Commission.

Operational Impacts

The total scheduled commercial transport category turbojet operations for August 2010 was **100%** Stage 3.

Noise Complaints

The Noise Complaint Summary - August 2010 shows no change in the total number of complaints from **34** in July 2010 to **34** in August 2010 (no change in number of complaints). There was a total of **16** complainants, with one complainant accounting for **6** complaints, and another for **5** complaints.

Monthly Curfew Intrusions Report

August 2010 resulted in **27** curfew intrusions, a decrease of **20** from July 2010. There were **0** complaints associated with the curfew intrusions. There was **1** operation "**In Non-Compliance**" with the Noise Control Program. A description can be found in the **Monthly Curfew Intrusions Report**.

Analysis of August 2010 Noise Data (continued)

General Aviation

Complaints associated with General Aviation operations changed from **9** in July 2010 to **5** in August 2010. There were **0** complaints associated with the San Jose Police Department helicopter surveillance activity.

Monthly Airline Turbojet Run-up Report

There were a total of **0** airline run-ups during August 2010. This compares with **2** in July 2010. There were **0** High Power Engine run-ups; **0** of which took place during the curfew hours. There were **0** complaints associated with engine run-ups. Engine run-ups were performed in accordance with Federal Aviation Administration and airline safety procedures.

Noise Complaint Summary - August 2010
Norman Y. Mineta San Jose International Airport
Aircraft Monitoring Center

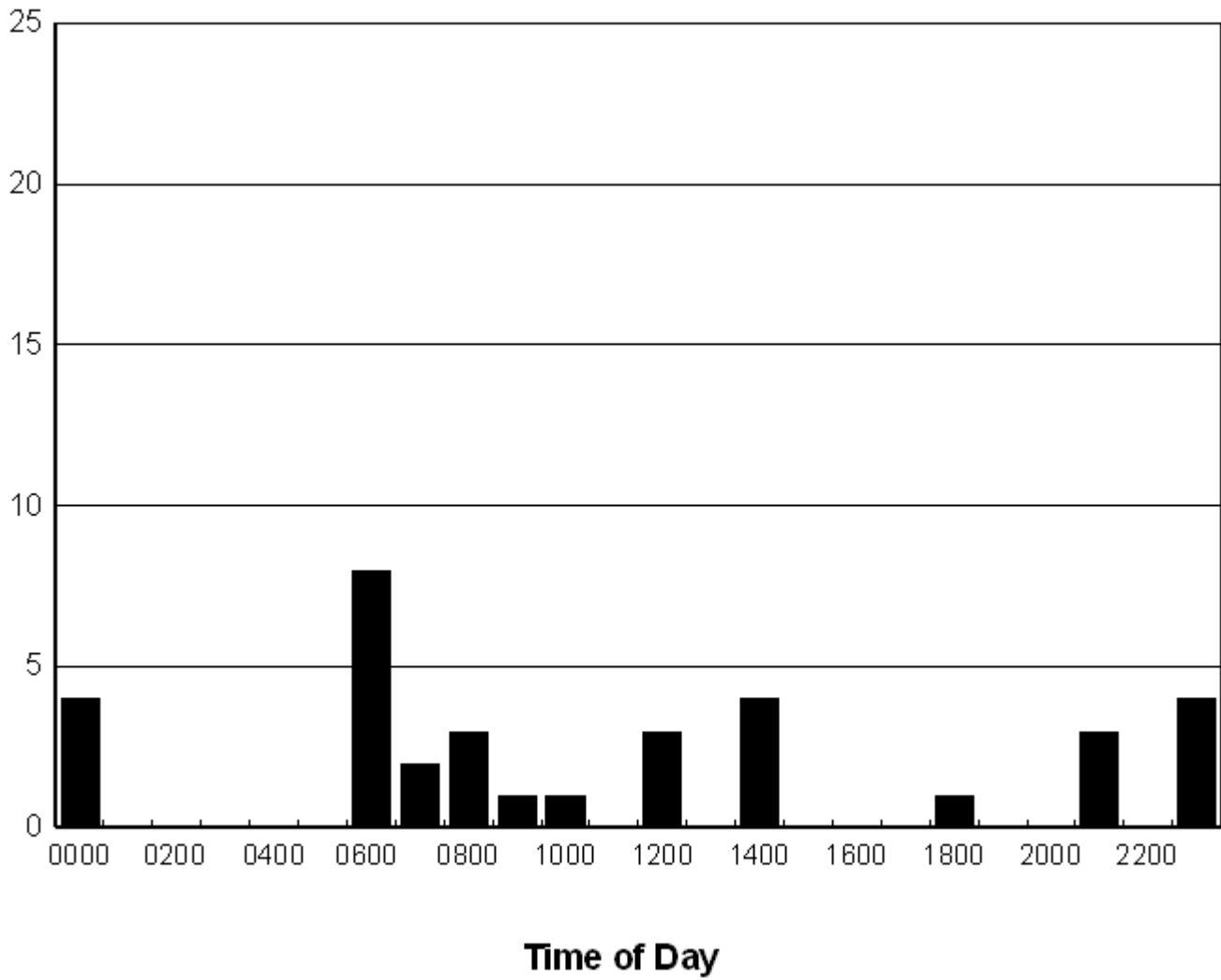
| Noise Complaints | | Mar 2010 | Apr 2010 | May 2010 | Jun 2010 | Jul 2010 | Aug 2010 |
|---------------------------------|-------------------|-------------|-------------|-------------|-------------|-------------|-------------|
| Commercial | Intrusion Related | 3 | 3 | 4 | 17 | 11 | 4 |
| | Loud | 19 | 29 | 26 | 21 | 14 | 25 |
| | Frequency | 0 | 1 | 0 | 0 | 0 | 0 |
| | Overflight | 0 | 0 | 1 | 0 | 0 | 0 |
| | Other | 0 | 0 | 0 | 23 | 0 | 0 |
| | Total | 22 | 33 | 31 | 61 | 25 | 29 |
| General Aviation | Intrusion Related | 0 | 0 | 0 | 0 | 0 | 0 |
| | Fixed Wing | 11 | 11 | 13 | 8 | 7 | 4 |
| | Helicopter | 1 | 1 | 0 | 1 | 2 | 0 |
| | Police Helicopter | 0 | 0 | 0 | 0 | 0 | 0 |
| | Total | 12 | 12 | 13 | 9 | 9 | 4 |
| Monthly Noise Complaints | | 35 | 45 | 45 | 70 | 34 | 34 |

| Complaints by Area | | Mar 2010 | Apr 2010 | May 2010 | Jun 2010 | Jul 2010 | Aug 2010 |
|---------------------------------|------------------------|-------------|-------------|-------------|-------------|-------------|-------------|
| City of San Jose | SJSH - Shasta/Hanchett | 4 | 4 | 4 | 6 | 7 | 2 |
| | SJRG - Rose Garden | 2 | 6 | 3 | 12 | 1 | 2 |
| | SJCC - Civic Center | 3 | 4 | 1 | 3 | 0 | 4 |
| | SJHP - Hensley Park | 3 | 1 | 0 | 3 | 0 | 0 |
| | SJWG - Willow Glen | 3 | 4 | 5 | 8 | 4 | 11 |
| | SJO - Other | 9 | 7 | 11 | 18 | 13 | 2 |
| | Total | 24 | 26 | 24 | 50 | 25 | 21 |
| City of Santa Clara | SCNA - North Areas | 8 | 16 | 14 | 15 | 9 | 6 |
| | SCO - Other | 1 | 0 | 0 | 0 | 0 | 0 |
| | Total | 9 | 16 | 14 | 15 | 9 | 6 |
| Other (Includes Unknown) | Other Areas | 2 | 3 | 7 | 5 | 0 | 7 |
| | Total | 2 | 3 | 7 | 5 | 0 | 7 |
| Monthly Noise Complaints | | 35 | 45 | 45 | 70 | 34 | 34 |

| | | | | | | |
|--|-----|-----|-----|-----|-----|-----|
| No. of Citizens Filing Complaints | 24 | 28 | 23 | 46 | 19 | 16 |
| Average Complaints per Day | 1.1 | 1.5 | 1.5 | 2.3 | 1.1 | 1.1 |

Noise Complaints by Time of Day

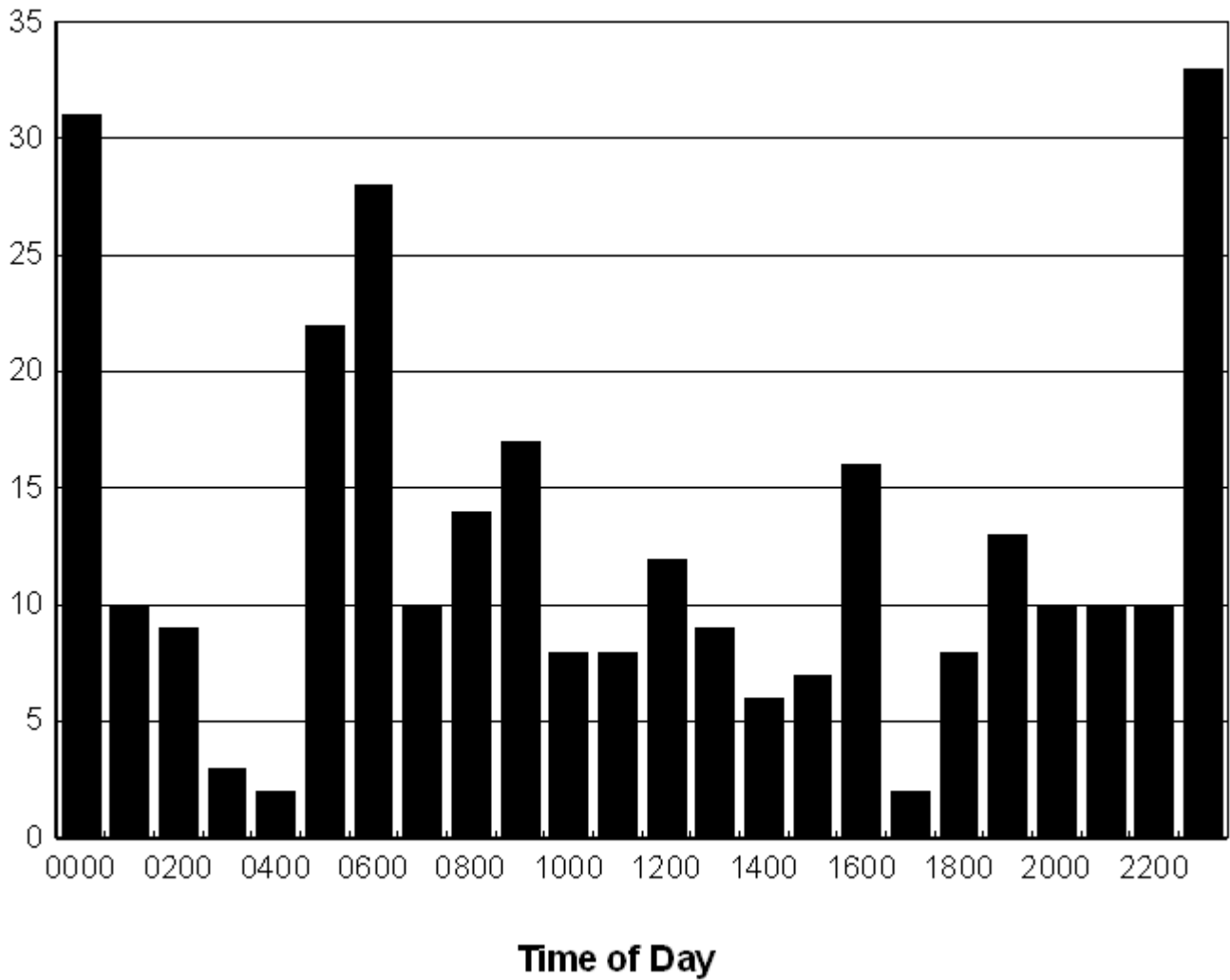
Norman Y. Mineta San Jose International Airport
Number of Complaints - August 2010



34 Total Complaints

Noise Complaints by Time of Day - YTD

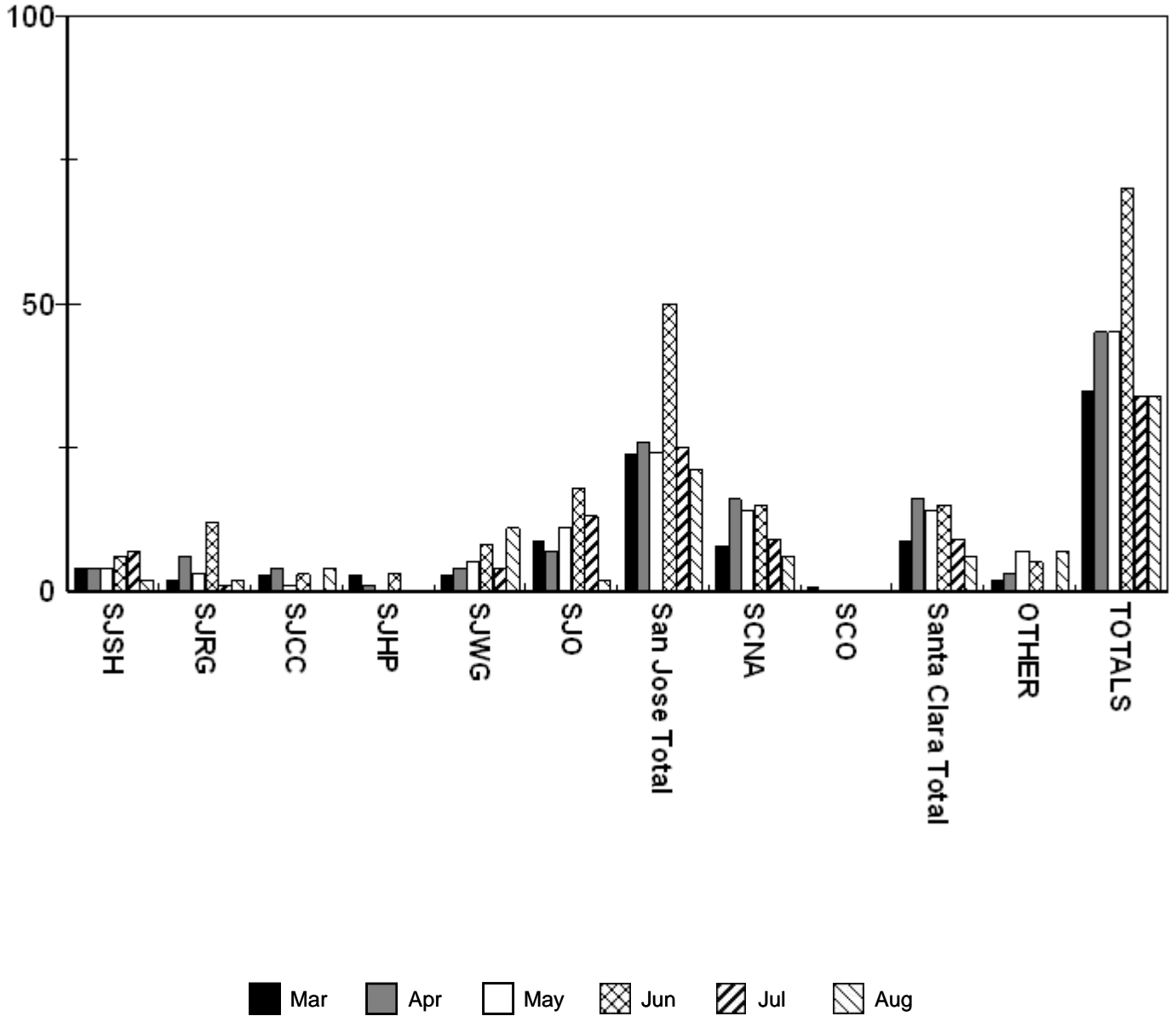
Norman Y. Mineta San Jose International Airport
Number of Complaints - YTD through August 2010



298 Total Complaints

Noise Complaints - City Areas

**Norman Y. Mineta San Jose International Airport - SJC
Complaints - March 2010 through August 2010**



Monthly Curfew Intrusion Report - August 2010

Norman Y. Mineta San Jose International Airport Aircraft Noise Monitoring Center

Curfew Intrusion Criteria

Curfew intrusion times are validated by ANOMS Noise Monitoring Sites #106 and #110 located at both ends of Runway 30L/12R. *All times are rounded to the nearest minute.*

| Date | Time | Carrier | Flight_No | Runway | Aircraft | Comment | Complaints |
|----------|-------|---------|-----------|--------|----------|------------|------------|
| 08/02/10 | 00:25 | DAL | DAL8963 | A30L | B753 | MILITARY | 0 |
| 08/02/10 | 00:32 | UAL | UAL467 | A30L | B752 | MECHANICAL | 0 |
| 08/02/10 | 01:49 | DAL | DAL8826 | D30R | B753 | MILITARY | 0 |
| 08/05/10 | 00:25 | JBU | JBU174 | D30R | A320 | MECHANICAL | 0 |
| 08/05/10 | 01:02 | DAL | DAL1797 | A30L | A320 | MECHANICAL | 0 |
| 08/05/10 | 01:33 | SWA | SWA1098 | A30R | B737 | MECHANICAL | 0 |
| 08/05/10 | 02:17 | DAL | DAL1684 | D30R | A320 | MECHANICAL | 0 |
| 08/05/10 | 23:53 | DAL | DAL1684 | D30R | A320 | MECHANICAL | 0 |
| 08/06/10 | 01:17 | UAL | UAL467 | A30L | B752 | WEATHER | 0 |
| 08/06/10 | 23:58 | UAL | UAL467 | A30R | B752 | WEATHER | 0 |
| 08/07/10 | 00:17 | AAL | AAL1035 | A30L | MD83 | WEATHER | 0 |
| 08/10/10 | 00:27 | JBU | JBU472 | D30R | A320 | MECHANICAL | 0 |
| 08/11/10 | 00:48 | UAL | UAL467 | A30L | B752 | WEATHER | 0 |
| 08/12/10 | 00:50 | DAL | DAL1684 | D30R | A320 | MECHANICAL | 0 |
| 08/13/10 | 05:18 | SCX | SCX8953 | D30R | B738 | CURFEW | 0 |
| 08/14/10 | 00:10 | DAL | DAL1684 | D30R | A320 | WEATHER | 0 |
| 08/17/10 | 00:31 | JBU | JBU174 | D30R | A320 | WEATHER | 0 |
| 08/17/10 | 23:34 | USA | AWE285 | A30R | A319 | WEATHER | 0 |
| 08/17/10 | 23:35 | AAL | AAL1035 | A30R | MD82 | MECHANICAL | 0 |
| 08/22/10 | 23:30 | JBU | JBU173 | A30R | A320 | ATC | 0 |
| 08/23/10 | 00:03 | DAL | DAL1684 | D30R | A320 | MECHANICAL | 0 |
| 08/23/10 | 00:38 | JBU | JBU174 | D30R | A320 | WEATHER | 0 |
| 08/24/10 | 01:14 | SWA | SWA254 | A30L | B737 | ATC | 0 |
| 08/24/10 | 23:30 | DAL | DAL1797 | A30L | A320 | MECHANICAL | 0 |
| 08/25/10 | 00:44 | DAL | DAL1684 | D30R | A320 | MECHANICAL | 0 |
| 08/28/10 | 00:05 | DAL | DAL1684 | D30R | A320 | MECHANICAL | 0 |
| 08/31/10 | 01:52 | DAL | DAL1797 | A30R | A320 | MECHANICAL | 0 |

Total Intrusions = 27

Total Complaints = 0

Monthly Curfew Intrusion Report - August 2010 (continued)

KEY

RUNWAY - A = Arrival D = Departure (Number)
STAGE 2 BTJ - Older Technology Business Turbojet
TRNSP3 - Stage 3 Transport Category Aircraft
LIFEFLIGHT - Medical Emergency Flights
OTHER
UNKNOWN

ATC - FAA Air Traffic Control Factors
MECHANICAL - Aircraft Mechanical Delays
WEATHER - Weather Related Factors
UNIVERSAL TIME - 1pm = 13:00 and 11pm = 23:00
SECURITY

INTRUSIONS IN COMPLIANCE WITH ANCP

| | | |
|--|--------|----|
| ATC Related Operations | Total: | 2 |
| Mechanical Related Operations | Total: | 14 |
| Weather Related Operations | Total: | 8 |
| Lifeflight/Medical Emergency Related Operations | Total: | 0 |
| Government/Military/Emergency Related Operations | Total: | 2 |
| Other | Total: | 0 |

INTRUSIONS IN NON-COMPLIANCE WITH ANCP

CURFEW: Sun Country Airlines (Mendota Heights, Mn) Flight SCX8953, (B738)

| | | |
|--------------------------|--------|---|
| Non-Compliant Operations | Total: | 1 |
|--------------------------|--------|---|

Curfew (Turbojet) Report Summary - August 2010

Norman Y. Mineta San Jose International Airport
Aircraft Noise Monitoring Center

Aircraft Curfew Intrusions

| Airline | Arrivals | Departures | Total | Complaints |
|--------------------------------------|-----------|------------|-----------|------------|
| AAL - AMERICAN AIRLINES | 2 | 0 | 2 | 0 |
| DAL - DELTA AIR LINES, INC. | 4 | 8 | 12 | 0 |
| JBU - JETBLUE AIRWAYS | 1 | 4 | 5 | 0 |
| SCX - SUN COUNTRY AIRLINES | 0 | 1 | 1 | 0 |
| SWA - SOUTHWEST AIRLINES | 2 | 0 | 2 | 0 |
| UAL - UNITED AIRLINES | 4 | 0 | 4 | 0 |
| Commercial Totals | 13 | 13 | 26 | 0 |
| | | | | |
| Business Jets Stage 2 | 0 | 0 | 0 | 0 |
| Transport Jets Stage 3 | 0 | 0 | 0 | 0 |
| Business/Transport Jet Totals | 0 | 0 | 0 | 0 |
| | | | | |
| Turbojet Totals | 13 | 13 | 26 | 0 |

Total Operations: 11,293

Curfew Operations VS Total Operations - August 2010

**Norman Y. Mineta San Jose International Airport
Aircraft Noise Monitoring Center**

| Airline | Curfew Operations | | | Total Operations* | Curfew as % of Total Operations | | |
|-----------------------|-------------------|---------------|-----------|-------------------|---------------------------------|---------------|-------------|
| | Compliant | Non Compliant | Total | | Compliant | Non Compliant | Total |
| AMERICAN AIRLINES | 2 | 0 | 2 | 483 | 0.41 | 0.00 | 0.41 |
| DELTA AIR LINES, INC. | 12 | 0 | 12 | 253 | 4.74 | 0.00 | 4.74 |
| JETBLUE AIRWAYS | 5 | 0 | 5 | 124 | 4.03 | 0.00 | 4.03 |
| SUN COUNTRY AIRLINES | 0 | 1 | 1 | 6 | 0.00 | 16.67 | 16.67 |
| SOUTHWEST AIRLINES | 2 | 0 | 2 | 3993 | 0.05 | 0.00 | 0.05 |
| UNITED AIRLINES | 4 | 0 | 4 | 232 | 1.72 | 0.00 | 1.72 |
| Totals | 25 | 1 | 26 | 5091 | 0.49 | 0.02 | 0.51 |

*Does not include Cargo or non-scheduled operations.

Curfew (Turbojet) Report Summary - August 2010

Norman Y. Mineta San Jose International Airport Aircraft Noise Monitoring Center

Summary of Curfew Turbojet Operations
*****Airport Curfew is 11:00 P.M. through 7:00 A.M.*****

| Hours | Arrivals | Departures | Total | Complaints |
|---------------|-----------|------------|-----------|------------|
| 2300 - 2329 | 0 | 0 | 0 | 0 |
| 2330 - 2359 | 5 | 1 | 6 | 0 |
| 0000 - 0029 | 2 | 5 | 7 | 0 |
| 0030 - 0059 | 2 | 4 | 6 | 0 |
| 0100 - 0129 | 3 | 0 | 3 | 0 |
| 0130 - 0159 | 2 | 1 | 3 | 0 |
| 0200 - 0229 | 0 | 1 | 1 | 0 |
| 0230 - 0259 | 0 | 0 | 0 | 0 |
| 0300 - 0329 | 0 | 0 | 0 | 0 |
| 0330 - 0359 | 0 | 0 | 0 | 0 |
| 0400 - 0429 | 0 | 0 | 0 | 0 |
| 0430 - 0459 | 0 | 0 | 0 | 0 |
| 0500 - 0529 | 0 | 1 | 1 | 0 |
| 0530 - 0559 | 0 | 0 | 0 | 0 |
| 0600 - 0629 | 0 | 0 | 0 | 0 |
| 0630 - 0659 | 0 | 0 | 0 | 0 |
| TOTALS | 14 | 13 | 27 | 0 |

Monthly Airline Run-up Report - August 2010

Norman Y. Mineta San Jose International Airport
Aircraft Noise Monitoring Center

| Date | Time | Carrier | Runway | Aircraft | Run-up Type | Complaints |
|------|------|---------|--------|----------|-------------|------------|
| - | - | - | - | - | - | |

*No airline run-ups during August, 2010

Monthly Airline Run-up Summary - August 2010

Norman Y. Mineta San Jose International Airport
Aircraft Noise Monitoring Center

| Carrier | Run-up High Power Over 90% | Run-up Part Power 60% to 90% | Run-up Low Power Less than 60% | Total | Complaints |
|---------------|----------------------------------|------------------------------------|--------------------------------------|-------|------------|
| | - | - | - | - | - |
| Totals | - | - | - | - | - |

*No airline run-ups during August, 2010

Complaints - August 2010

Norman Y. Mineta San Jose International Airport Aircraft Noise Monitoring Center

| Event Date Time | Call Date Time | Event | Resolution |
|------------------|------------------|---|---|
| 08/01/2010 14:25 | 08/01/2010 14:40 | Mr. M from Willow Glen reported aircraft noise over his area. Mr. M did not request contact. | Departure by commercial aircraft. Frequent caller postcard sent on 8/6. |
| 08/01/2010 14:35 | 08/01/2010 14:40 | Mr. M from Willow Glen reported aircraft noise over his area. Mr. M did not request contact. | Departure by commercial aircraft. Frequent caller postcard sent on 8/6. |
| 08/03/2010 23:25 | 08/03/2010 00:29 | Ms. N from San Jose reported aircraft noise over his area. Ms. N did not request contact. | Departure by commercial aircraft. Frequent caller postcard sent on 8/6. |
| 08/03/2010 23:30 | 08/03/2010 00:29 | Ms. N from San Jose reported aircraft noise over her area. Ms. N did not request contact. | Arrival by commercial aircraft. Frequent caller postcard sent on 8/6. |
| 08/04/2010 12:00 | 08/04/2010 14:22 | Ms. S from Willow Glen reported aircraft noise over her area. Ms. S did not request contact. | Departure by commercial aircraft. Frequent caller postcard sent on 8/6. |
| 08/04/2010 23:30 | 08/04/2010 23:40 | Mr. M from Willow Glen reported aircraft noise over his area. Mr. M did not request contact. | Departure by commercial aircraft. Frequent caller postcard sent on 8/6. |
| 08/07/2010 07:30 | 08/07/2010 10:16 | Mr. W from Sunnyvale reported aircraft noise over his area. Mr. W did not request contact. | Departure by commercial aircraft. Frequent caller postcard sent on 8/13. |
| 08/07/2010 09:30 | 08/07/2010 10:16 | Mr. W from Sunnyvale reported aircraft noise over his area. Mr. W did not request contact. | Departure by commercial aircraft. Frequent caller postcard sent on 8/13. |
| 08/07/2010 18:15 | 08/07/2010 18:40 | Ms. E from the Civic Center area reported aircraft noise over her area. Ms. E did request contact. | Compliant departure by commercial aircraft. Noise Staff contacted Ms. E on 8/7. Frequent caller postcard sent on 8/13. |
| 08/08/2010 12:11 | 08/08/2010 12:20 | Mr. Z from the Shasta/Hanchett area reported aircraft noise over his area. Mr. Z did request contact. | Departure by commercial aircraft. Noise Staff contacted Mr. Z on 8/8. Frequent caller postcard sent on 8/13. |
| 08/09/2010 06:00 | 08/09/2010 06:15 | Mr. G from the Civic Center area reported aircraft noise over his area. Mr. G did not request contact. | Compliant arrival by a stage 3 business jet. Frequent caller postcard sent on 8/13. |
| 08/09/2010 06:01 | 08/09/2010 08:06 | Mr. L from the Rose Garden reported aircraft noise over his area. Mr. L did not request contact. | Compliant departure by a Stage 3 business jet. Frequent caller postcard sent on 8/13. |
| 08/09/2010 06:10 | 08/09/2010 21:14 | Ms. H from the Rose Garden area reported aircraft noise over her area. Ms. H did request contact. | Compliant arrival by a Stage 3 business jet. Noise Staff contacted Ms. H on 8/9. Frequent caller postcard sent on 8/13. |
| 08/10/2010 00:12 | 08/10/2010 00:30 | Mr. M from North Santa Clara reported aircraft noise over his area. Mr. M did not request contact. | Curfew investigation revealed a compliant departure by a commercial aircraft. Frequent caller postcard sent on 8/13. |
| 08/10/2010 14:04 | 08/10/2010 14:12 | Mr. M from Willow Glen reported aircraft noise over his area. Mr. M did not request contact. | Departure by commercial aircraft. Frequent caller postcard sent on 8/13. |
| 08/11/2010 06:08 | 08/11/2010 06:17 | Mr. G from the Civic Center area reported aircraft noise over his area. Mr. G did not request contact. | Compliant arrival by a Stage 3 business jet. Frequent caller postcard sent on 8/13. |
| 08/11/2010 06:30 | 08/11/2010 06:44 | Ms. E from the Civic Center area reported aircraft noise over her area. Ms. E did not request contact. | Departure by commercial aircraft. Frequent caller postcard sent on 8/13. |
| 08/11/2010 06:30 | 08/11/2010 08:19 | Mr. Z from the Shasta/Hanchett area reported aircraft noise over his area. Mr. Z did not request contact. | Departure by commercial aircraft. Frequent caller postcard sent on 8/13. |

Complaints - August 2010

Norman Y. Mineta San Jose International Airport Aircraft Noise Monitoring Center

| Event Date Time | Call Date Time | Event | Resolution |
|------------------|------------------|--|--|
| 08/12/2010 07:33 | 08/12/2010 12:34 | Mr. P from Los Gatos reported aircraft noise over his residence. Mr. P did not request a callback. | Departure by commercial aircraft. Frequent caller postcard sent on 8/13. |
| 08/13/2010 10:20 | 08/13/2010 13:00 | Mr. S from North Santa Clara reported aircraft noise over his area. Mr. S did not request contact. | Departure by commercial aircraft. Frequent caller postcard sent on 8/20. |
| 08/14/2010 08:26 | 08/14/2010 10:00 | Mr. W from Sunnyvale reported aircraft noise over his area. Mr. W did not request contact. | Departure by commercial aircraft. Frequent caller postcard sent on 8/20. |
| 08/15/2010 09:00 | 08/15/2010 16:01 | Mr. W from Sunnyvale reported aircraft noise over his area. Mr. W did not request contact. | Departure by commercial aircraft. Frequent caller postcard sent on 8/20. |
| 08/15/2010 23:24 | 08/15/2010 23:30 | Mr. W from Sunnyvale reported aircraft noise over his area. Mr. W did not request contact. | Departure by commercial aircraft. Frequent caller postcard sent on 8/20. |
| 08/17/2010 00:29 | 08/17/2010 19:46 | Mr. S from North Santa Clara reported aircraft noise over his area. Mr. S did not request contact. | Curfew investigation revealed a compliant departure by a commercial aircraft. Frequent caller postcard sent on 8/20. |
| 08/21/2010 06:30 | 08/21/2010 09:38 | Ms. O from Willow Glen reported aircraft noise over her area. Ms. O did not request contact. | Arrival by commercial aircraft. Frequent caller postcard sent on 8/27. |
| 08/22/2010 12:19 | 08/22/2010 12:33 | Mr. S from North Santa Clara reported aircraft noise over his area. Mr. S did not request contact. | Departure by commercial aircraft. Frequent caller postcard sent on 8/27. |
| 08/23/2010 00:01 | 08/23/2010 12:42 | Mr. S from North Santa Clara reported aircraft noise over his area. Mr. S did not request contact. | Curfew investigation revealed a compliant departure by a commercial aircraft. Frequent caller postcard sent on 8/27. |
| 08/23/2010 21:30 | 08/23/2010 21:56 | Ms. S from Willow Glen reported aircraft noise over her area. Ms. S did not request contact. | Departure by commercial aircraft. Frequent caller postcard sent on 8/27. |
| 08/23/2010 21:35 | 08/23/2010 21:56 | Ms. S from Willow Glen reported aircraft noise over her area. Ms. S did not request contact. | Departure by commercial aircraft. Frequent caller postcard sent on 8/27. |
| 08/24/2010 06:56 | 08/24/2010 07:03 | Ms. S from Willow Glen reported aircraft noise over her area. Ms. S did not request contact. | Departure by commercial aircraft. Frequent caller postcard sent on 8/27. |
| 08/25/2010 08:25 | 08/25/2010 08:29 | Ms. S from Willow Glen reported aircraft noise over her area. Ms. S did not request contact. | Arrival by commercial aircraft. Frequent caller postcard sent on 8/27. |
| 08/25/2010 08:30 | 08/25/2010 08:52 | Ms. H from Willow Glen reported aircraft noise over her area. Ms. H did not request contact. | Departure by commercial aircraft. Frequent caller postcard sent on 8/27. |
| 08/28/2010 00:05 | 08/28/2010 15:56 | Mr. G from North Santa Clara reported aircraft noise over his area. Mr. G did not request contact. | Curfew investigation revealed a compliant arrival by a commercial aircraft. Frequent caller postcard sent on 9/1. |
| 08/29/2010 14:00 | 08/29/2010 14:35 | Mr. W from Sunnyvale reported aircraft noise over his area. Mr. W did not request contact. | Departure by commercial aircraft. Frequent caller postcard sent on 9/1. |