

SENT TO COUNCIL:

Distributed on:  
APR 30 2012  
City Manager's Office

# Memorandum

**TO:** HONORABLE MAYOR AND  
CITY COUNCIL

**FROM:** Kimberly B. Aguirre

**SUBJECT:** 2011 ANNUAL AIRLINE  
COMPLIANCE AND NOISE  
CONTROL REPORT

**DATE:** April 27, 2012

Approved

Date

4/30/12

## INFORMATION

Attached for distribution is the Norman Y. Mineta San José International Airport 2011 Annual Airline Compliance and Noise Control Report.

/s/

KIMBERLY B. AGUIRRE  
Assistant Director of Aviation and  
Chief Operating Officer

Attachments



# **2011 ANNUAL AIRLINE COMPLIANCE AND NOISE CONTROL REPORT**

# TABLE OF CONTENTS

---

<b>AIRLINE COMPLIANCE WITH NOISE CONTROL PROGRAM</b>	<b>1</b>
<b>GOOD FAITH MEASURES</b>	<b>1</b>
<b>ANNUAL AIRLINE COMPLIANCE REPORT 2011</b>	<b>2</b>
<b>COMPLIANT INTRUSIONS BY TYPE</b>	<b>3</b>
<b>2011 INTRUSIONS BY TIME OF DAY</b>	<b>3</b>
<b>COMPLIANT VS. NON-COMPLIANT INTRUSIONS</b>	<b>4</b>
<b>NOISE CONTROL PROGRAM</b>	<b>5</b>
<b>COMPLIANT CURFEW INTRUSION SUMMARY</b>	<b>6</b>
<b>COMPLIANT CURFEW INTRUSION SUMMARY BY CATEGORY</b>	<b>6</b>
<b>COMPLAINTS VS CALLERS BY NEIGHBORHOOD</b>	<b>7</b>
<b>2011 NOISE COMPLAINTS BY TYPE</b>	<b>8</b>



NORMAN Y. MINETA  
**SAN JOSE**  
INTERNATIONAL  
AIRPORT



# AIRLINE COMPLIANCE

## BACKGROUND

On October 21, 2003, City Council approved an amendment to Title 25 of the San Jose Municipal Code to restate the curfew hours and aircraft restrictions. Mineta San Jose International Airport (SJC), with the approval of the Federal Aviation Administration (FAA), revised the curfew portion of its noise control program from a weight-based curfew to a noise based curfew. The revised noise control program also included an enforcement provision where operators are fined \$2,500 for every curfew intrusion. A curfew intrusion is any aircraft take off or landing occurring during the curfew hours. A non-compliant intrusion is any take off or landing by a prohibited aircraft during the curfew hours, which is not exempt due to causes beyond the scheduled operator's control, such as mechanical problems, weather delays, Air Traffic Control, security or an emergency. The following information constitutes the Annual Airline Compliance and Noise Control Report for 2011.



## GOOD FAITH MEASURES TAKEN BY AIRLINES IN 2011

Over the course of 2011, the airlines continued to comply with the Noise Control Program that came with the adoption of the Curfew Ordinance on October 21, 2003. ATI, American Eagle, Federal Express, Horizon Airlines, SkyWest Airlines and UPS continued to operate with no intrusions (compliant or non-compliant). Alaska Airlines, JetBlue Airways and Southwest have continued to swap aircraft and flight crews whenever possible to ensure that the flights have the least impact on the curfew.

# MINETA SAN JOSE INTERNATIONAL AIRPORT

## ANNUAL AIRLINE COMPLIANCE REPORT 2011

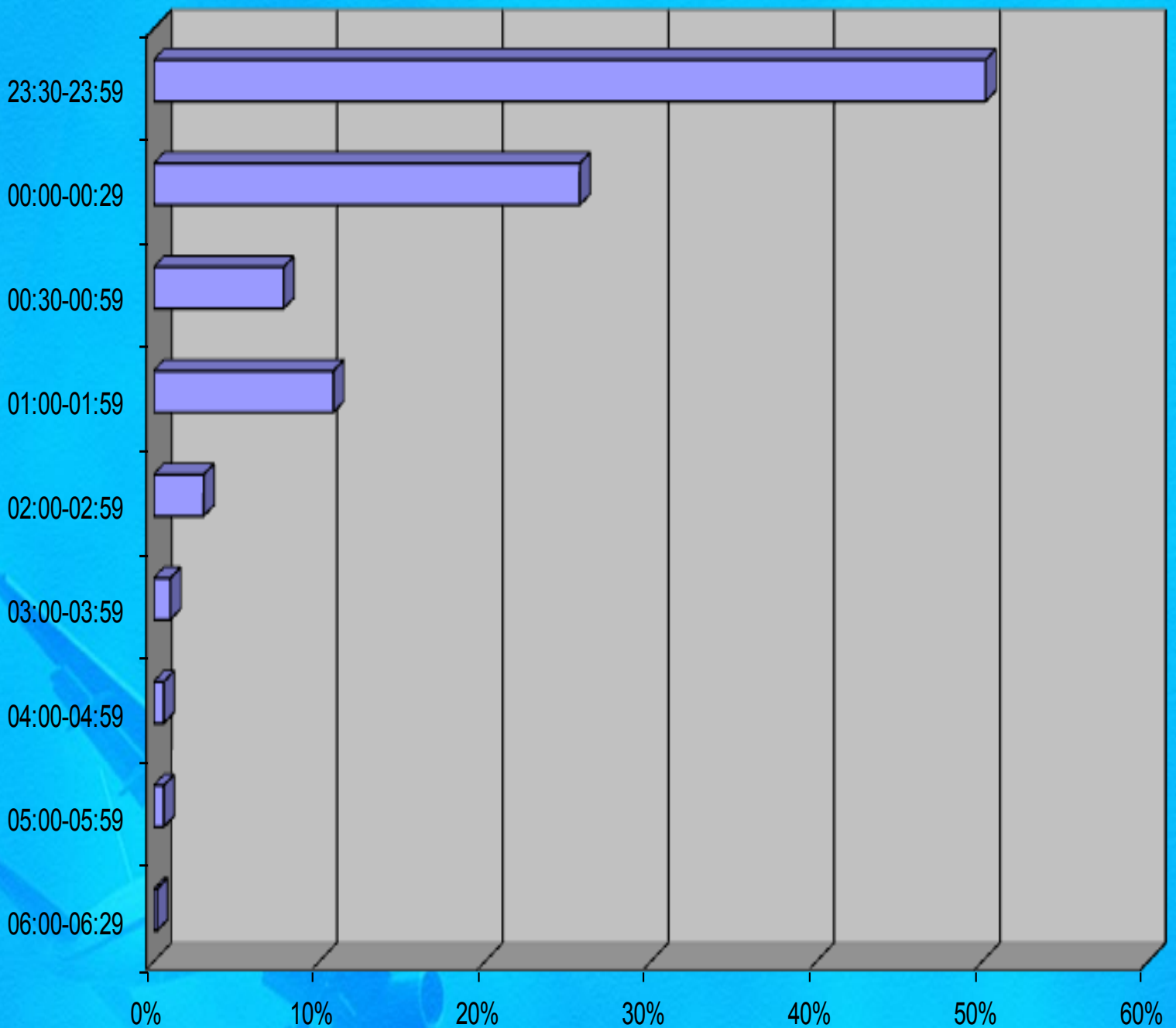
AIRLINE	TOTAL OPS	TOTAL INTRUSIONS	COMPLIANT INTRUSIONS	NON COMPLIANT INTRUSIONS
<b>Alaska</b>	7166	66	55	11
<b>American</b>	5313	67	67	0
<b>Continental</b>	1623	14	14	0
<b>Delta</b>	2340	41	41	0
<b>Hawaiian</b>	730	7	7	0
<b>JetBlue</b>	1263	60	60	0
<b>Southwest</b>	47148	193	181	12
<b>United</b>	2269	46	45	1
<b>US Airways</b>	3593	2	2	0
<b>Volaris</b>	930	2	2	0
<b>ATI</b>	335	0	0	0
<b>FedEx</b>	917	0	0	0
<b>UPS</b>	585	0	0	0
<b>TOTAL OPS</b>	<b>74212</b>	<b>498</b>	<b>474</b>	<b>24</b>



# MINETA SAN JOSE INTERNATIONAL AIRPORT COMPLIANT INTRUSION BY TYPE

Weather	Mechanical	Air Traffic Control	Medical / Emergency	Military/Security / Government	Total
176	205	70	3	20	472
37.13%	43.25%	14.77%	0.63%	4.22%	100.00%

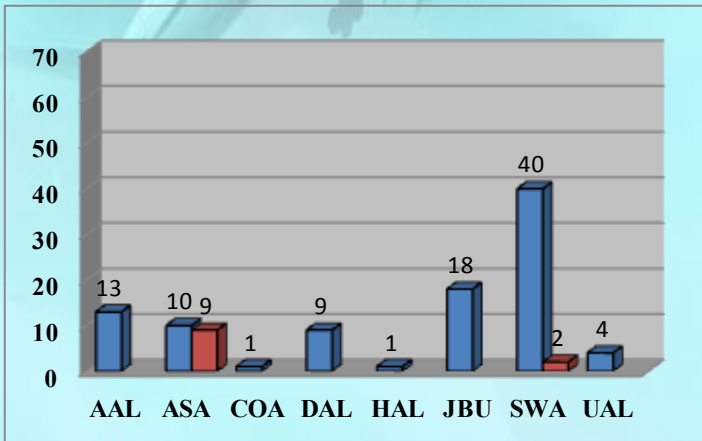
## 2011 INTRUSION BY TIME OF DAY



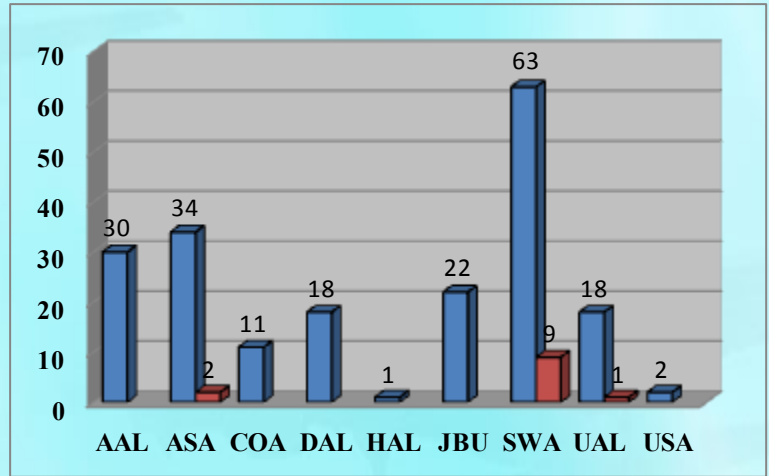


# Compliant vs. Non-Compliant Intrusions by Commercial Operators

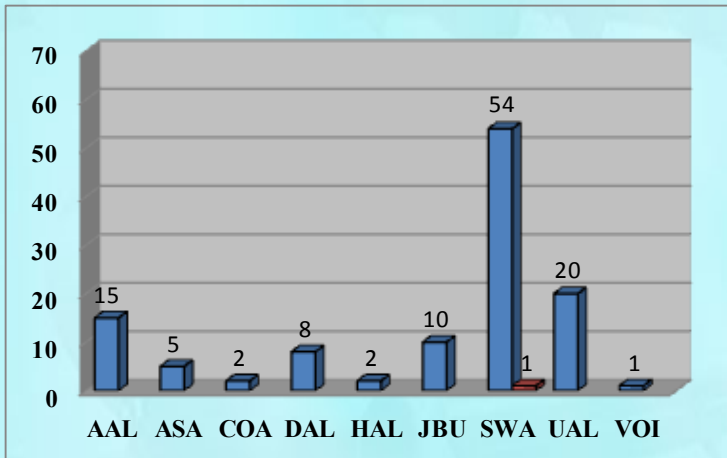
1st Quarter 2011



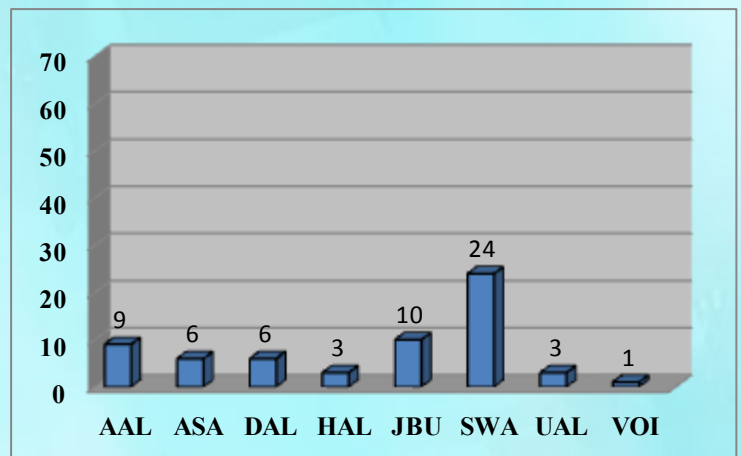
2nd Quarter 2011



3rd Quarter 2011



4th Quarter 2011



**LEGEND**

- COMPLIANT OPERATIONS
- NON COMPLIANT OPERATIONS

The Airport's Curfew is based on FAA certified noise levels that aircraft must not exceed in order to operate. The curfew times at Norman Y. Mineta San Jose Intl Airport are between the hours of 11:30 p.m. and 6:30 a.m. There is an additional restriction for Stage II, older and louder technology aircraft that prohibits operations between the hours of 11:00p.m. and 7:00 a.m. In addition, if a flight operates between 6:30 a.m. and 11:30 p.m. and cannot meet its scheduled arrival or departure time because of factors beyond the control of the airline, i.e., weather factors, mechanical factors, or Federal Aviation Administration (FAA) Air Traffic Control factors, the flight is permitted to achieve its scheduled operation to/from the Airport. This can and does result in some flights occurring during the restricted hours.

# NOISE CONTROL PROGRAM

On October 21, 2003, San Jose City Council approved Ordinance No. 27000 to preserve the existing nighttime noise environment by restructuring the "Curfew" from a weight-based to a noise-based curfew and adding provisions for fines and penalties.



## Noise Complaints The Noise Complaint Summary for 2011

A total of **431** complaints were registered in 2011 compared to **386** complaints in 2010 an increase of 45. There were a total of 135 individual complainants who accounted for a total of 431 complaints.

## Annual Curfew Intrusions Report

2011 resulted in **533** curfew intrusions, an increase of **160** from 2010.

There were **59** complaints associated with the curfew intrusions. There were **31** operations "**In Non-Compliance**" with the Noise Control Program.

## General Aviation

Complaints associated with General Aviation operations changed from **83** in 2010 to **95** in 2011. There were **7** complaints associated with the San Jose Police Department helicopter surveillance activity.



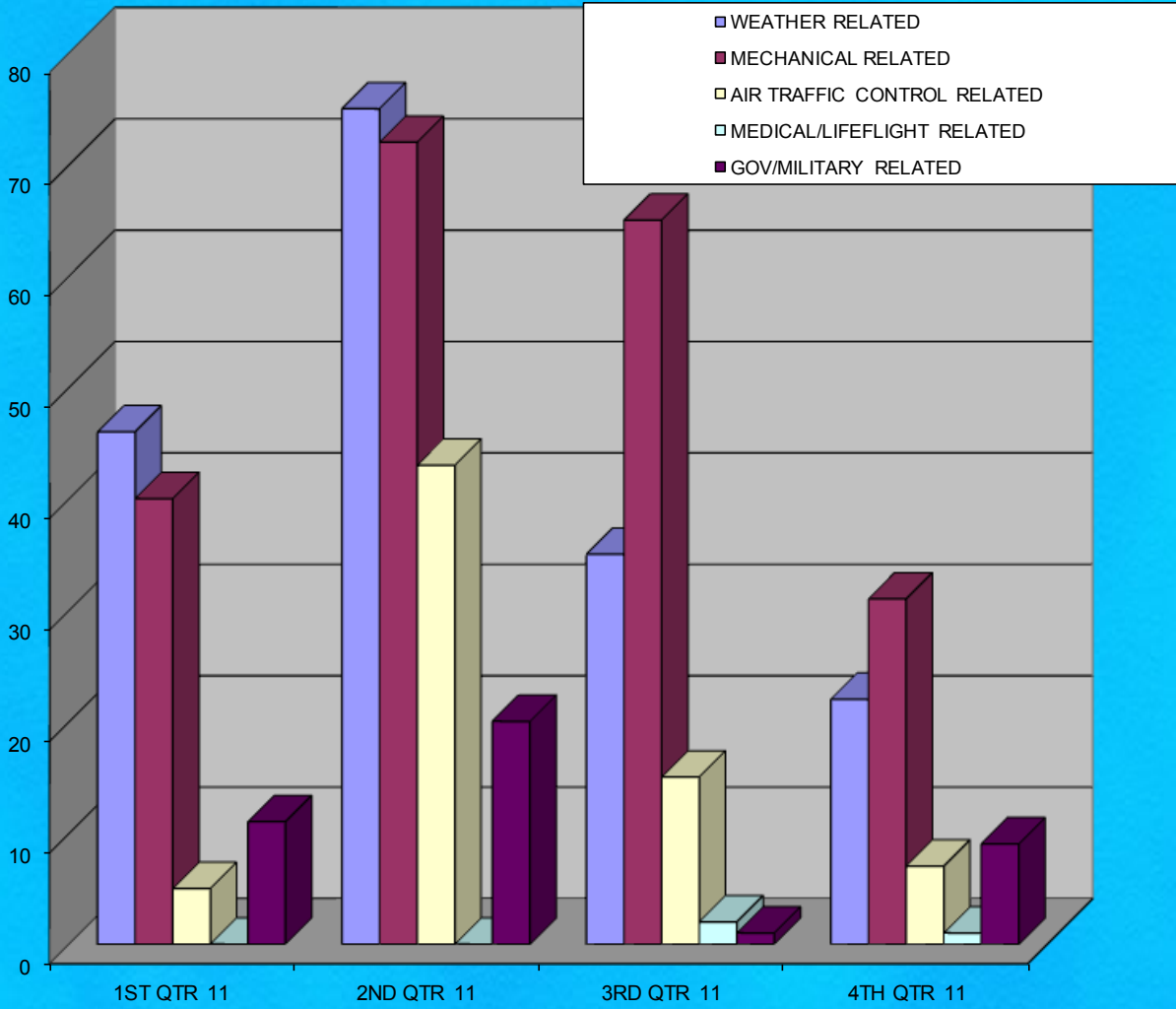
## Annual Airline Turbojet Run-up Report

There were a total of **4** airline high power run-ups during 2011 which took place during the curfew hours. This compares with **4** in 2010. There were **0** complaints associated with engine run-ups. Engine run-ups were performed in accordance with Federal Aviation Administration and airline safety procedures.

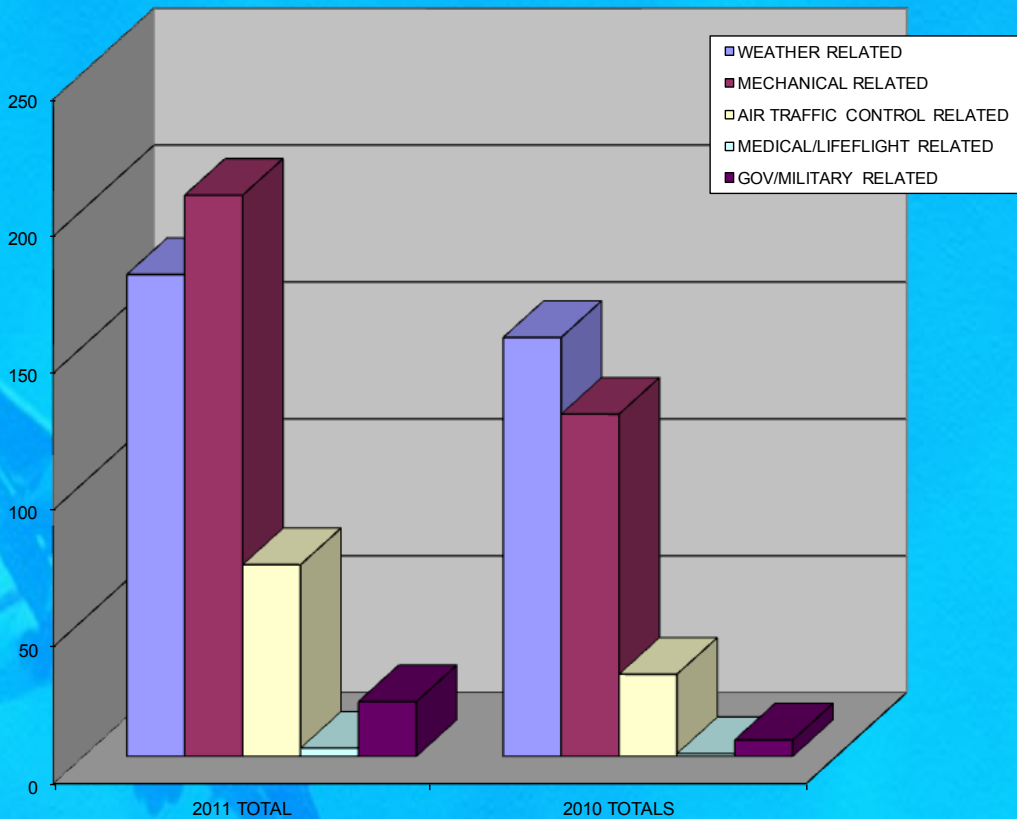




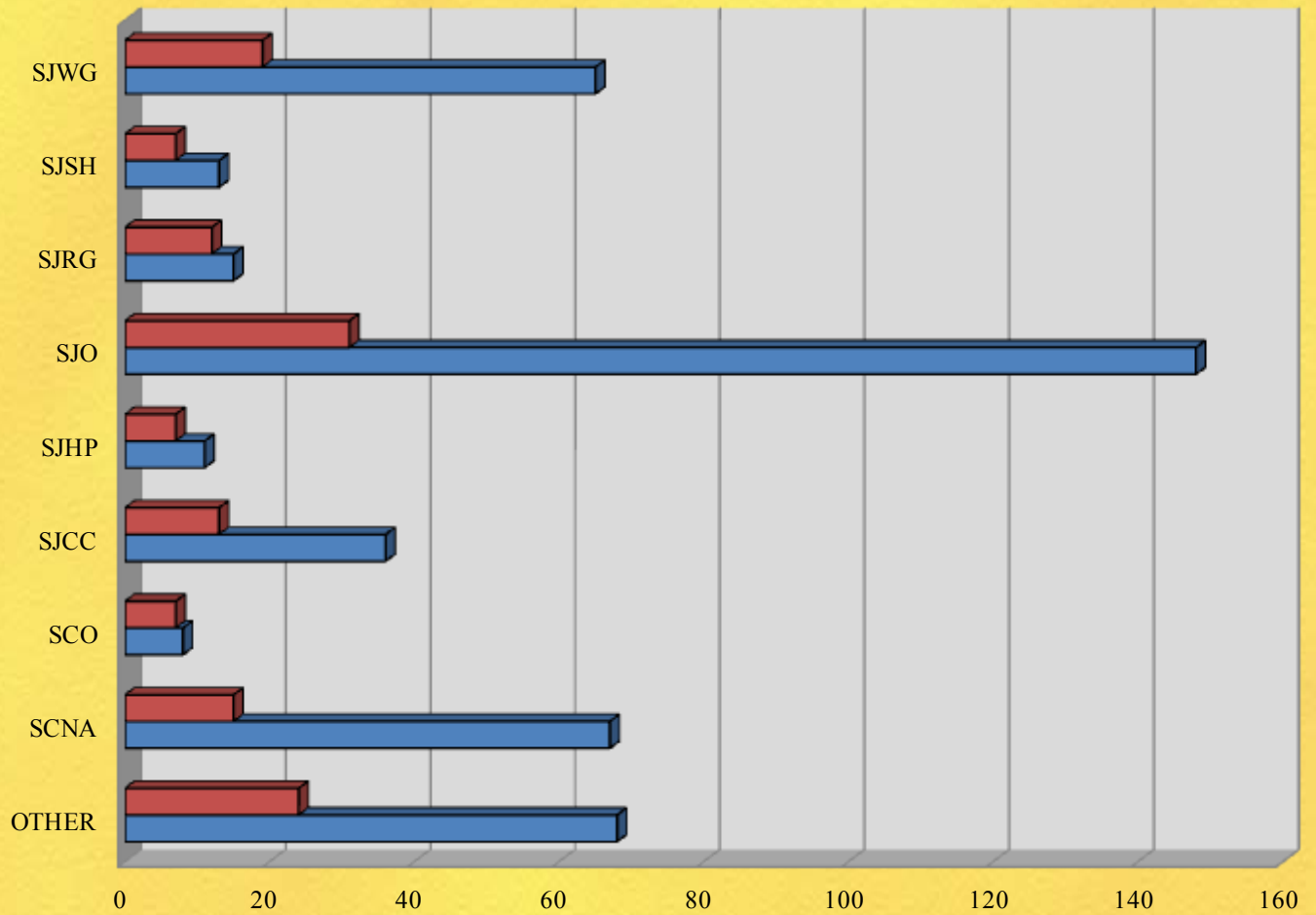
# COMPLIANT CURFEW INTRUSION SUMMARY 2011



# COMPLIANT CURFEW INTRUSION SUMMARY BY CATEGORY



## Complaints vs. Callers by Neighborhood



	OTHER	SCNA	SCO	SJCC	SJHP	SJO	SJRG	SJSH	SJWG
■ CALLERS	24	15	7	13	7	31	12	7	19
■ COMPLAINTS	68	67	8	36	11	148	15	13	65

**SJCC**-SAN JOSE CIVIC CENTER  
**SJHP**-SAN JOSE HENSLEY PARK  
**SJRG**-SAN JOSE ROSE GARDEN  
**SJSH**-SAN JOSE SHASTA/HANCHETT

**SJWG**-SAN JOSE WILLOW GLEN  
**SJO**-ALLOTHER AREAS IN SAN JOSE  
**SCNA**-SANTA CLARA NORTH AREA  
**SCO**- ALL OTHER AREAS IN SANTA CLARA  
**OTHER**-ALL OTHER SURROUNDING CITIES



# MINETA SAN JOSE INTERNATIONAL AIRPORT

## 2011 NOISE COMPLAINTS BY TYPE

