

Distributed on:
NOV 12 2013
City Manager's Office

Memorandum

TO: HONORABLE MAYOR AND
CITY COUNCIL

FROM: Kim Becker Aguirre

SUBJECT: 2012 ANNUAL AIRLINE
COMPLIANCE AND NOISE
CONTROL REPORT

DATE: November 12, 2013

Approved

Date

11/12/13

INFORMATION

Attached for distribution is the Norman Y. Mineta San José International Airport 2012 Annual Airline Compliance and Noise Control Report.

/s/

KIM BECKER AGUIRRE
Director of Aviation

Attachment

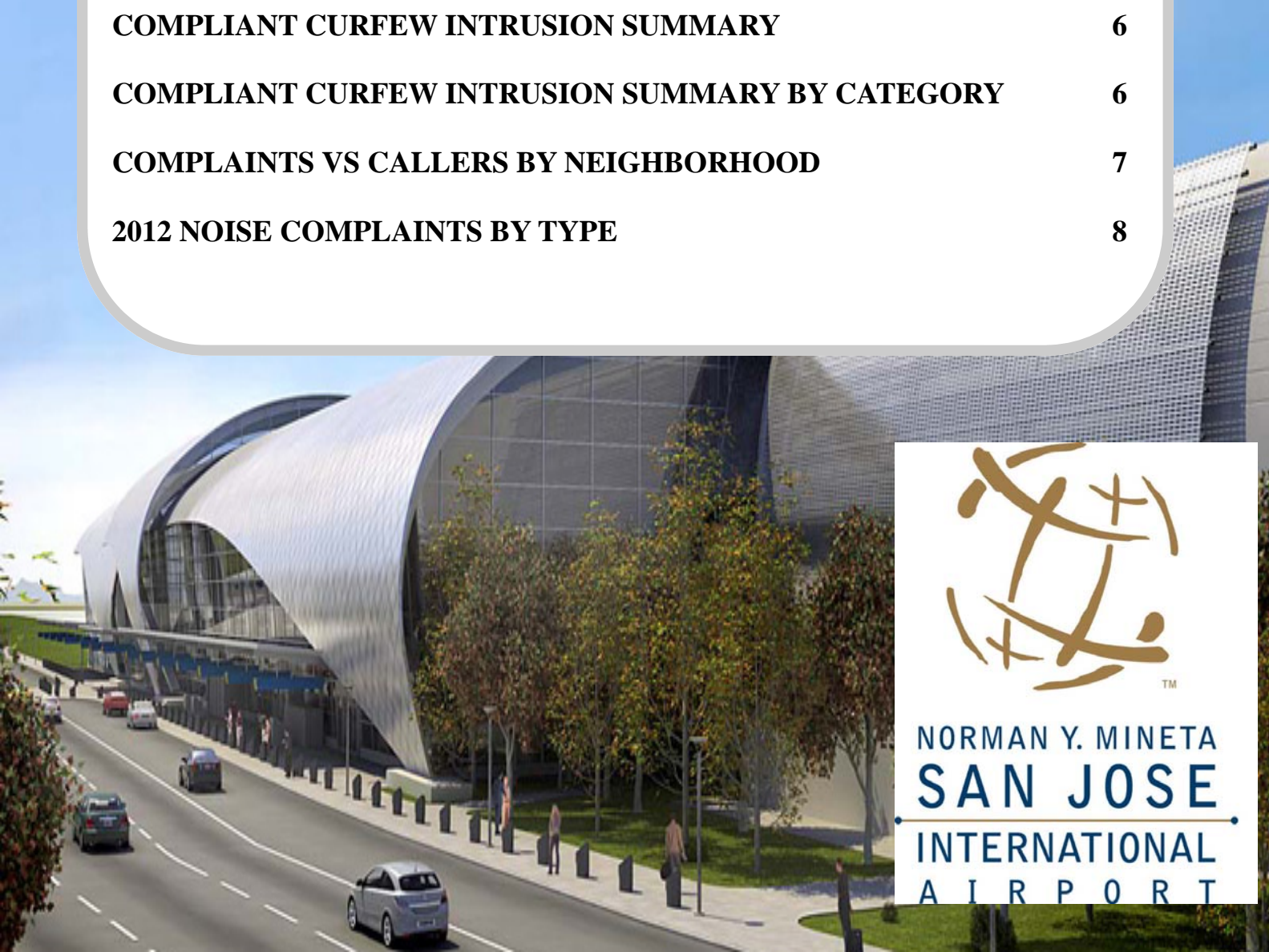




**2012 ANNUAL
AIRLINE COMPLIANCE AND NOISE
CONTROL REPORT**

TABLE OF CONTENTS

AIRLINE COMPLIANCE WITH NOISE CONTROL PROGRAM	1
GOOD FAITH MEASURES	1
ANNUAL AIRLINE COMPLIANCE REPORT 2012	2
COMPLIANT INTRUSIONS BY TYPE	3
2012 INTRUSIONS BY TIME OF DAY	3
COMPLIANT VS. NON-COMPLIANT INTRUSIONS	4
NOISE CONTROL PROGRAM	5
COMPLIANT CURFEW INTRUSION SUMMARY	6
COMPLIANT CURFEW INTRUSION SUMMARY BY CATEGORY	6
COMPLAINTS VS CALLERS BY NEIGHBORHOOD	7
2012 NOISE COMPLAINTS BY TYPE	8

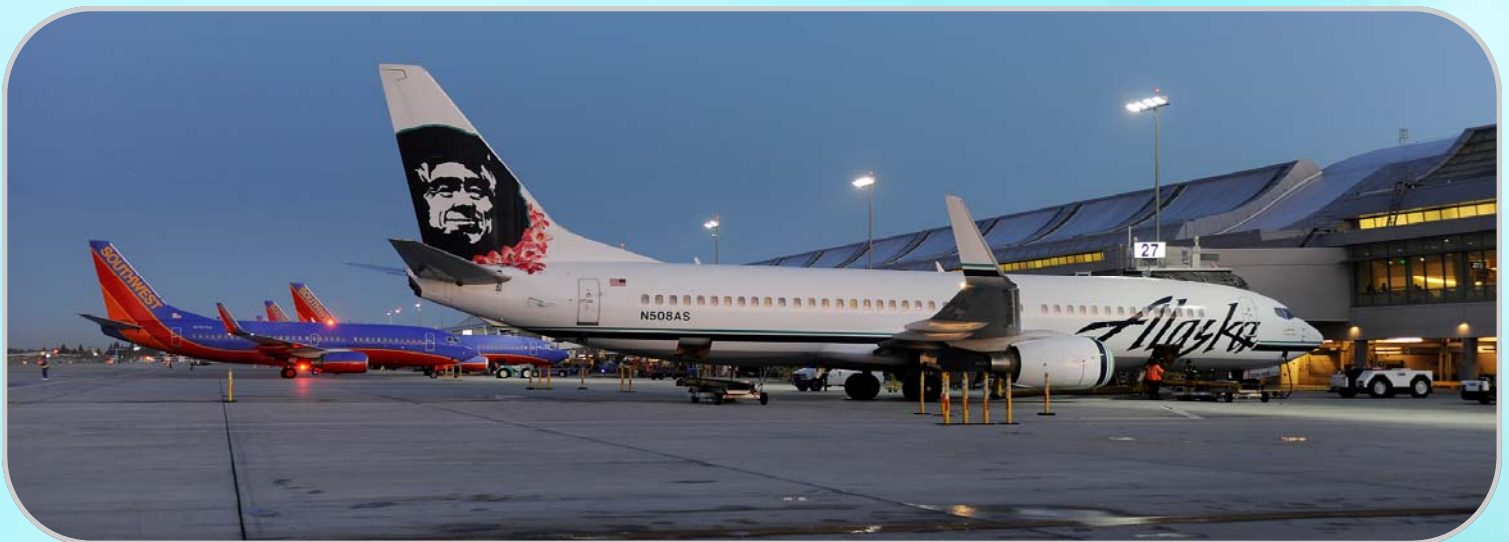


NORMAN Y. MINETA
SAN JOSE
INTERNATIONAL
AIRPORT

AIRLINE COMPLIANCE

BACKGROUND

On October 21, 2003, City Council approved an amendment to Title 25 of the San Jose Municipal Code to restate the curfew hours and aircraft restrictions. Mineta San Jose International Airport (SJC), with the approval of the Federal Aviation Administration (FAA), revised the curfew portion of its noise control program from a weight-based curfew to a noise based curfew. The revised noise control program also included an enforcement provision where operators are fined \$2,500 for every curfew intrusion. A curfew intrusion is any aircraft take off or landing occurring during the curfew hours. A non-compliant intrusion is any take off or landing by a prohibited aircraft during the curfew hours, which is not exempt due to causes beyond the scheduled operator's control, such as mechanical problems, weather delays, Air Traffic Control, security or an emergency. The following information constitutes the Annual Airline Compliance and Noise Control Report for 2012.



GOOD FAITH MEASURES TAKEN BY AIRLINES IN 2012

Over the course of 2012, the airlines continued to comply with the Noise Control Program that came with the adoption of the Curfew Ordinance on October 21, 2003. ATI, American Eagle, Federal Express, Horizon Airlines, SkyWest Airlines and UPS continued to operate with no intrusions (compliant or non-compliant). Alaska Airlines, JetBlue Airways and Southwest have continued to swap aircraft and flight crews whenever possible to ensure that the flights have the least impact on the curfew.

MINETA SAN JOSE INTERNATIONAL AIRPORT

ANNUAL AIRLINE COMPLIANCE REPORT 2012

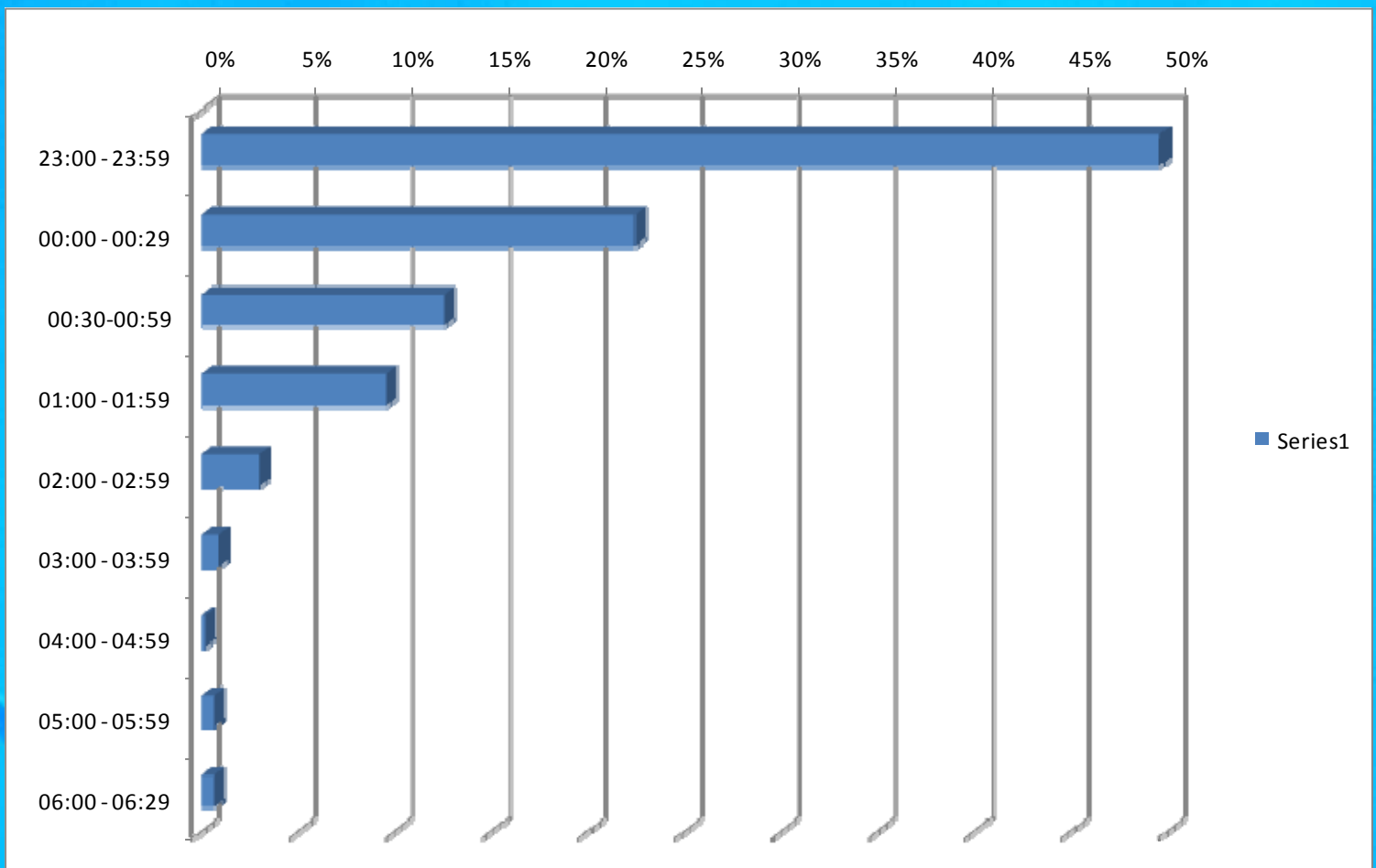
AIRLINE	TOTAL OPS	TOTAL INTRUSIONS	COMPLIANT INTRUSIONS	NON COMPLIANT INTRUSIONS
Alaska	7838	71	69	2
American	4579	76	75	1
Delta	1947	23	19	4
Hawaiian	1063	9	9	0
JetBlue	1161	50	46	4
Southwest	44860	142	135	9
United	3092	28	28	0
US Airways	3559	2	1	1
Volaris	778	2	2	0
FedEx	916	0	0	0
UPS	665	4	4	0
TOTAL OPS	70458	407	388	21



MINETA SAN JOSE INTERNATIONAL AIRPORT COMPLIANT INTRUSION BY TYPE

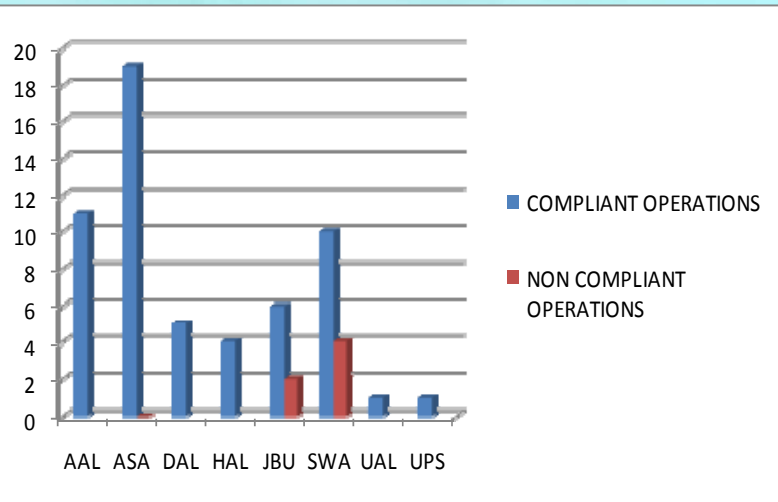
Weather	Mechanical	Air Traffic Control	Medical / Emergency	Military/Security / Government	Total
148	184	51	2	6	391
37.85%	47.06%	13.04%	0.51%	1.53%	100.00%

2012 INTRUSION BY TIME OF DAY

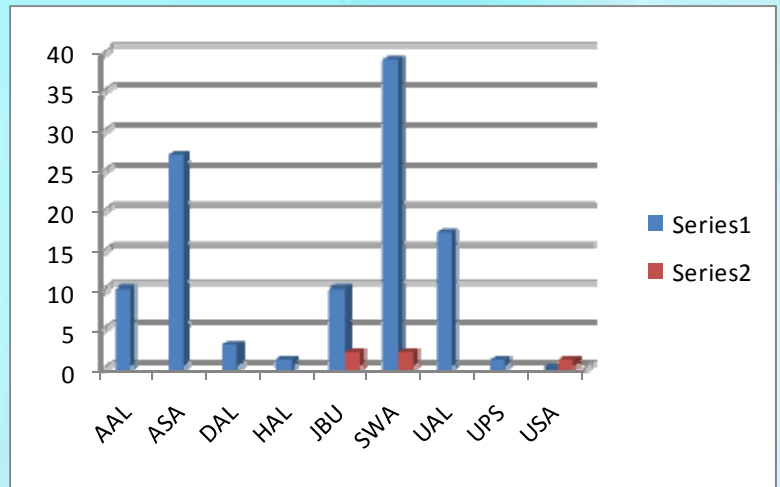


Compliant vs. Non-Compliant Intrusions by Commercial Operators

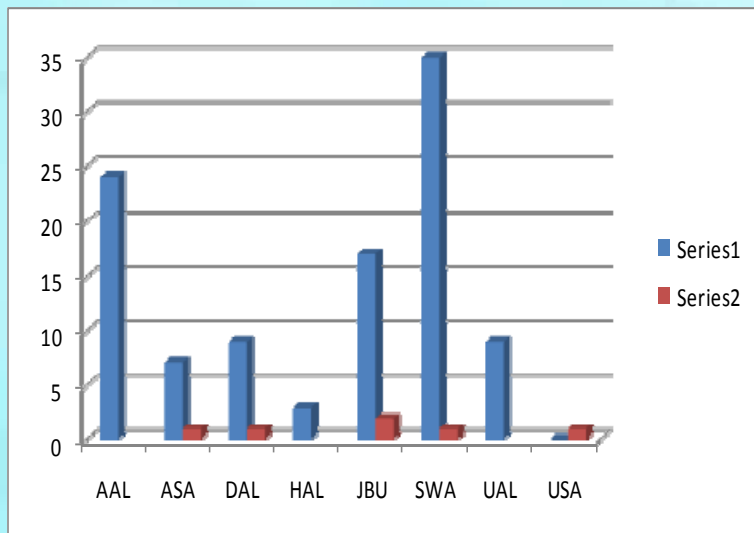
1st Quarter 2012



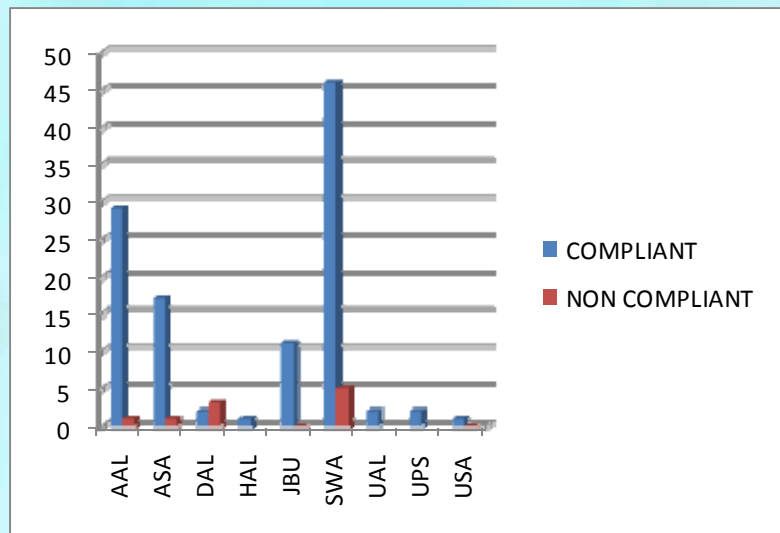
2nd Quarter 2012



3rd Quarter 2012



4th Quarter 2012



■ COMPLIANT OPERATIONS
■ NON COMPLIANT OPERATIONS

The Airport's Curfew is based on FAA certified noise levels that aircraft must not exceed in order to operate. The curfew times at Norman Y. Mineta San Jose Intl Airport are between the hours of 11:30 p.m. and 6:30 a.m. There is an additional restriction for Stage II, older and louder technology aircraft that prohibits operations between the hours of 11:00p.m. and 7:00 a.m. In addition, if a flight operates between 6:30 a.m. and 11:30 p.m. and cannot meet its scheduled arrival or departure time because of factors beyond the control of the airline, i.e., weather factors, mechanical factors, or Federal Aviation Administration (FAA) Air Traffic Control factors, the flight is permitted to achieve its scheduled operation to/from the Airport. This can and does result in some flights occurring during the restricted hours.

NOISE CONTROL PROGRAM

On October 21, 2003, San Jose City Council approved Ordinance No. 27000 to preserve the existing nighttime noise environment by restructuring the "Curfew" from a weight-based to a noise-based curfew and adding provisions for fines and penalties.



Noise Complaints The Noise Complaint Summary for 2012

A total of **431** complaints were registered in 2012 compared to **386** complaints in 2010 an increase of 45. There were a total of 135 individual complainants who accounted for a total of 431 complaints.

Annual Curfew Intrusions Report

2012 resulted in **533** curfew intrusions, an increase of **160** from 2010.

There were **59** complaints associated with the curfew intrusions. There were **31** operations "**In Non-Compliance**" with the Noise Control Program.

General Aviation

Complaints associated with General Aviation operations changed from **83** in 2010 to **95** in 2012. There were **7** complaints associated with the San Jose Police Department helicopter surveillance activity.

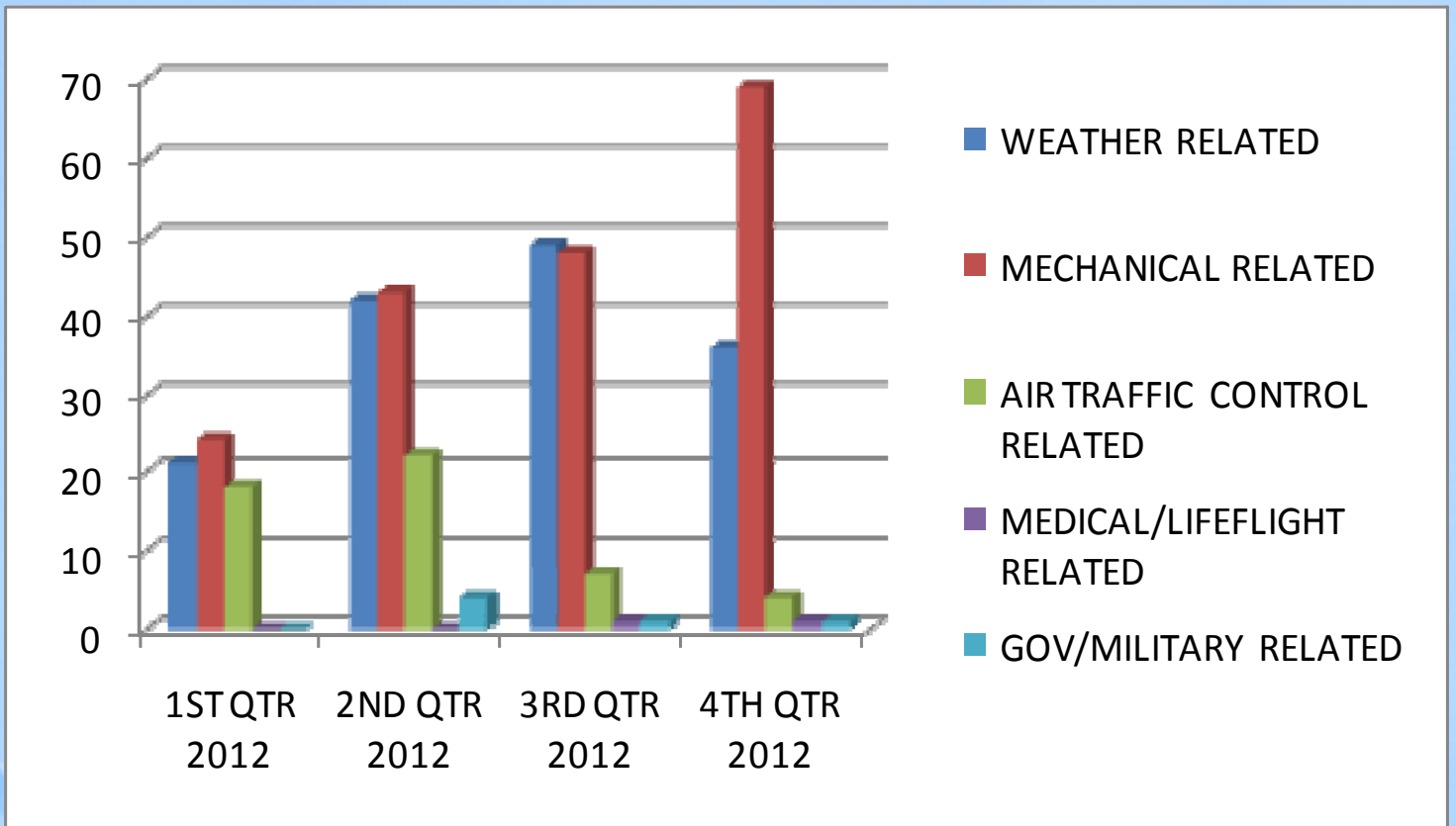


Annual Airline Turbojet Run-up Report

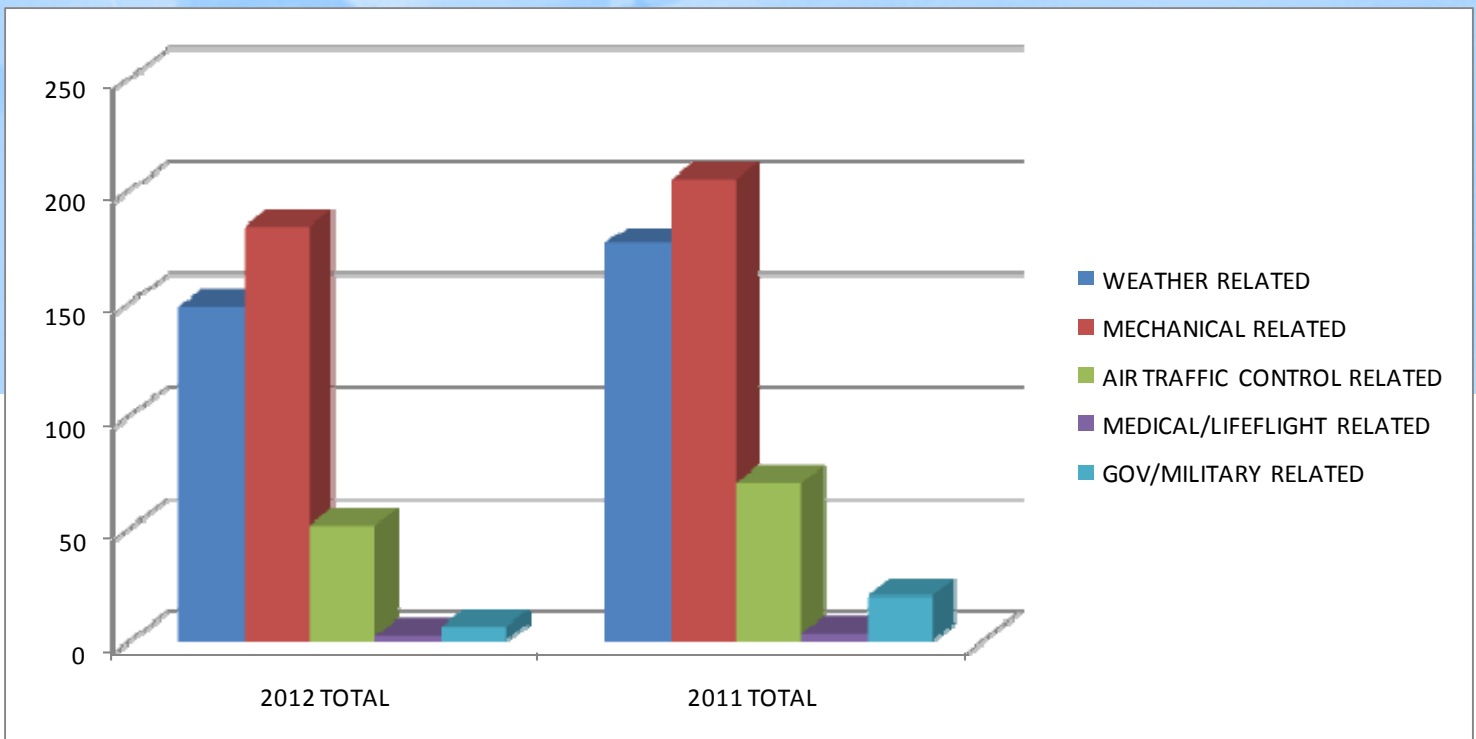
There were a total of **4** airline high power run-ups during 2012 which took place during the curfew hours. This compares with **4** in 2010. There were **0** complaints associated with engine run-ups. Engine run-ups were performed in accordance with Federal Aviation Administration and airline safety procedures.



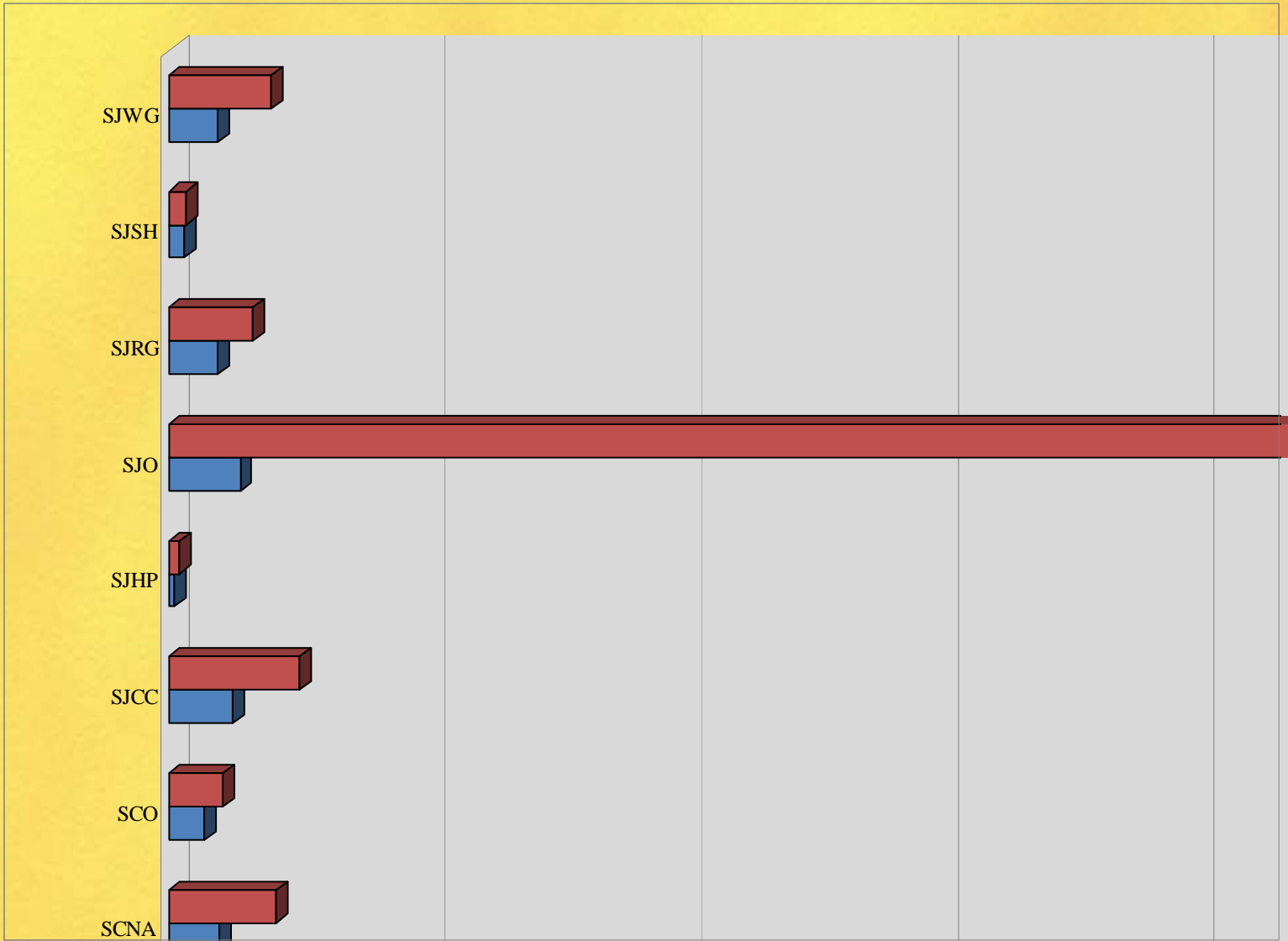
COMPLIANT CURFEW INTRUSION SUMMARY 2012



COMPLIANT CURFEW INTRUSION SUMMARY BY CATEGORY



Complaints vs. Callers by Neighborhood



SJCC-SAN JOSE CIVIC CENTER
SJHP-SAN JOSE HENSLEY PARK
SJRG-SAN JOSE ROSE GARDEN
SJSH-SAN JOSE SHASTA/HANCHETT

SJWG-SAN JOSE WILLOW GLEN
SJO-ALLOTHER AREAS IN SAN JOSE
SCNA-SANTA CLARA NORTH AREA
SCO- ALL OTHER AREAS IN SANTA CLARA
OTHER-ALL OTHER SURROUNDING CITIES



MINETA SAN JOSE INTERNATIONAL AIRPORT

2012 NOISE COMPLAINTS BY TYPE

