

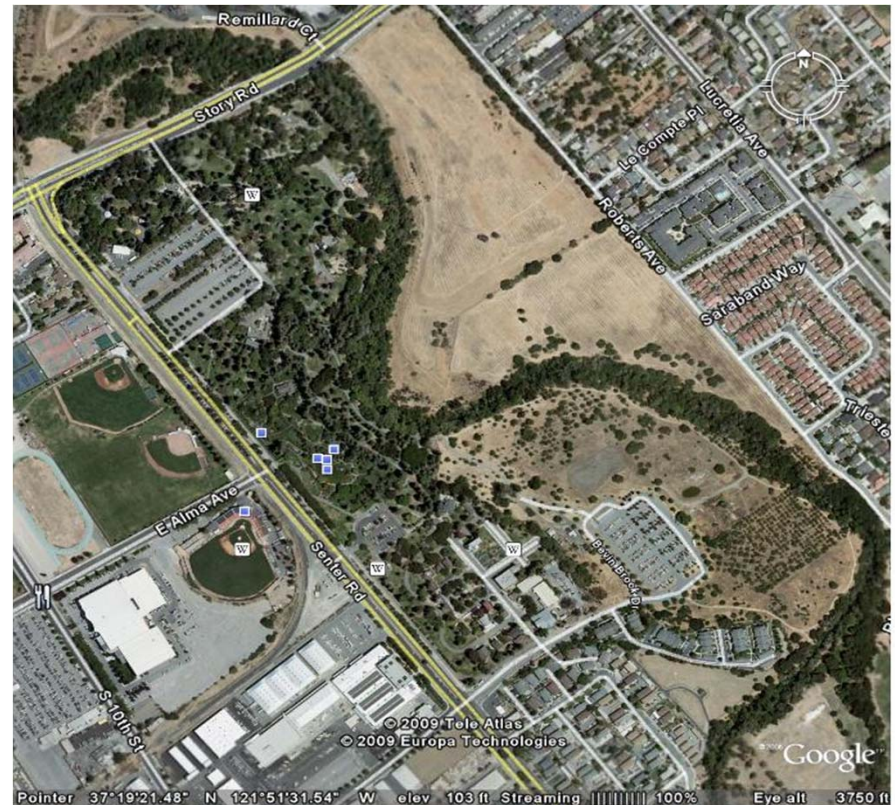
Proposal for the Installation of a 18-Hole Disc Golf Course at Kelley Park

Presented by
The Silicon Valley Disc Golf Club



Disc Golf At Kelley Park

The Silicon Valley Disc Golf Club is proposing the installation of an 18-hole Disc Golf course in the old orchard area of Kelley Park.



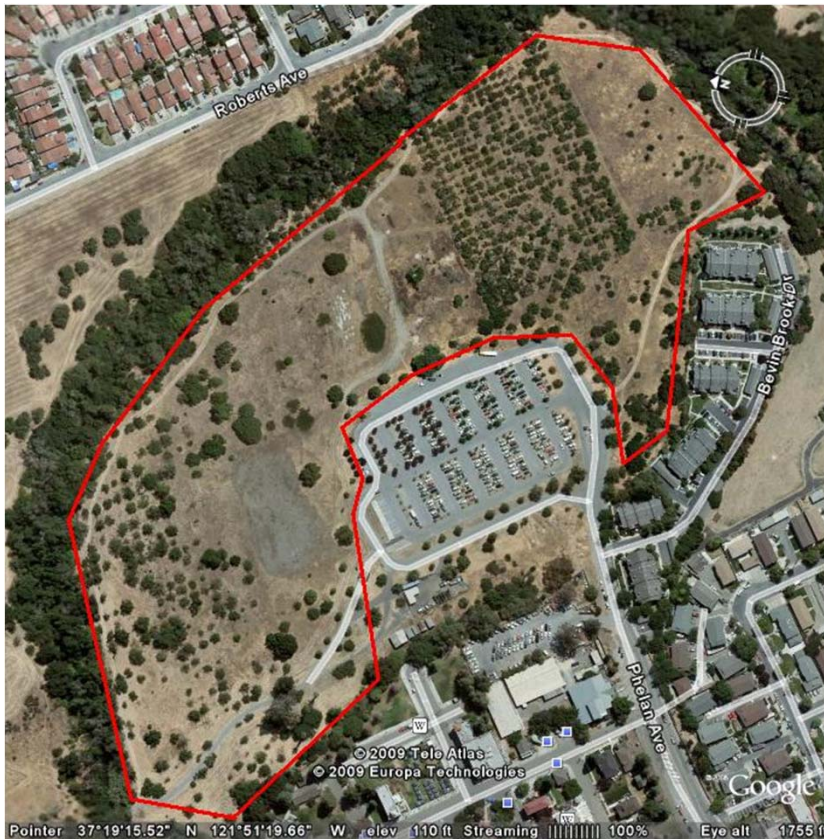
Kelley Park, San Jose CA



Why Disc Golf at Kelley Park?

There are now more than 2000 Disc Golf courses in the United States and Canada, nearly all installed by city and county parks departments. They have found that there are few recreational activities that offer the high benefit-to-cost ratio of disc golf. Disc golf has relatively low capital and maintenance costs compared with other recreational installations, is environmentally sound, is played year-round in all climates and is enjoyed immediately even by beginners of all ages.

Proposed Location of Disc Golf Course at Kelly Park



The old orchard area of Kelley Park has all the attributes of a great location to install a 18-Hole Disc Golf Course.

The orchard area is currently underutilized, has parking, restroom facilities and drinking water available.

What Is Disc Golf?

Disc Golf is played much like traditional golf. Instead of hitting a ball into a hole, you throw a more streamlined looking Frisbee® disc into a supported metal basket. The goal is the same: to complete the course in the fewest number of shots. A golf disc is thrown from a tee area to each basket, which is the "hole." As players progress down the fairway, they must make each consecutive shot from the spot where the previous throw has landed. The trees, shrubs and terrain changes in and around the fairways provide challenging obstacles for the golfer. Finally, the "putt" lands in the basket and the hole is completed.

Who Can Play?



The simple answer is that everyone can. In studies measuring participation in recreational activities, "throwing a Frisbee" has consistently been a top-ten activity. A disc golf course serves a broader portion of the community than many narrower interest activities with higher cost, skill or fitness levels required to even begin to play. Men and women, young and old, families with small children -- all can play disc golf. Because disc golf is so easy to understand and enjoy, no one is excluded. Players merely match their pace to their capabilities and proceed from there.



Disc Golf and PDGA Demographics



These indicators which highlight the growth of disc golf are taken from the PDGA database, the on-line Course Directory at www.pdga.com, and periodic PDGA membership surveys.

Disc Golf Players:

Persons who have played disc golf: 8-12 million
 Regular players: ~500000
 PDGA members (since 1976): 37920

Current PDGA Members:

1996	3904	2004	8575
1998	5017	2006	11302
2000	6230	2007	11943
2002	7638	2008	12980

Rate of Membership growth: 5-12% p.a.

Division: Pro 26% Amateur 69% Junior 5%
 Gender: Male 93% Female 7%

PDGA Tour:

Year	Events	Entrants	Pro Purse
1996	235	18900	\$368,800
1998	275	24300	\$556,100
2000	362	29200	\$808,900
2002	431	34800	\$1,084,500
2004	590	44200	\$1,316,800
2005	682	51200	\$1,389,900
2006	732	58100	\$1,596,400
2007	852	66658	\$1,774,900
2008	994	71676	\$2,000,555

Rate of Tour growth: 12-15% p.a.

PDGA World Championships:

Year	Pros	Amateurs	Juniors	Pro Purse
1996	308	174	0	\$38,100
1997	342	257	8	\$43,100
1998	362	251	28	\$45,000
1999	371	309	16	\$50,000
2000	410	387	28	\$92,640
2001	357	399	29	\$64,000
2002	225	257	22	\$50,535
2003	336	377	29	\$75,000
2004	332	499	80	\$80,740
2005	301	316	63	\$72,000
2006	299	480	65	\$83,150
2007	312	461	69	\$78,050
2008	311	430	52	\$80,009

PDGA Members - Select Indicators:

Age:

0-9	1%
10-19	5%
20-29	29%
30-39	30%
40-49	22%
50+	12%

Household Income (US\$):

0-15 000	9%
15-30 000	15%
30-50 000	29%
50-100 000	35%
> \$100 000	12%

Disc Golf Courses worldwide:

1975	1	2000	1145
1980	60	2005	1973
1985	250	2006	2197
1990	350	2007	2515
1995	560	2008	2748

Rate of Course growth: 11-14% p.a.

Courses by Country:

USA	2354
Scandinavia	164
Rest of Europe	78
Canada	89
Japan	36
Australia / New Zealand	24
Other Countries	3
Total	2748

Leading US States (2008):

State	Members	Courses	Events
Texas	1136	165	79
California	1142	132	49
Michigan	710	102	59
Ohio	443	93	43
North Carolina	523	79	37
Illinois	493	118	27
Minnesota	323	127	31
Georgia	399	45	44
Florida	423	60	27
Wisconsin	396	134	21
Iowa	308	136	22
Colorado	397	85	19

United States Championships:

Year	Open Field	Purse	US Women
1999	68	\$10,000	21
2000	82	\$19,955	30
2001	123	\$56,025	30
2002	150	\$56,800	44
2003	163	\$64,130	45
2004	179	\$75,573	51
2005	183	\$80,000	76
2006	174	\$83,650	78
2007	168	\$87,650	61
2008	188	\$82,130	68

Education:

Grade school	1%
High school	20%
Some college	24%
College graduate	42%
Advanced degree	13%

How Much Does It Cost To Play?

Many courses are located in city or regional parks where citizens play free. Most private and several public facilities will charge up to \$5 per day to play, or earn passive income from annual passes and/or fees to enter the park. The equipment itself is quite inexpensive – discs designed for golf sell for \$8-\$15 each and only one is needed to get started.

What Kind of Construction Would Be Planned for Kelley Park?

The installation of an 18-hole disc golf course at Kelley Park would include the construction of tees boxes and the installation of signs and baskets. No foliage would need to be planted or removed. A few branches usually need to be trimmed or removed near a few tees and baskets, especially near eye level range.

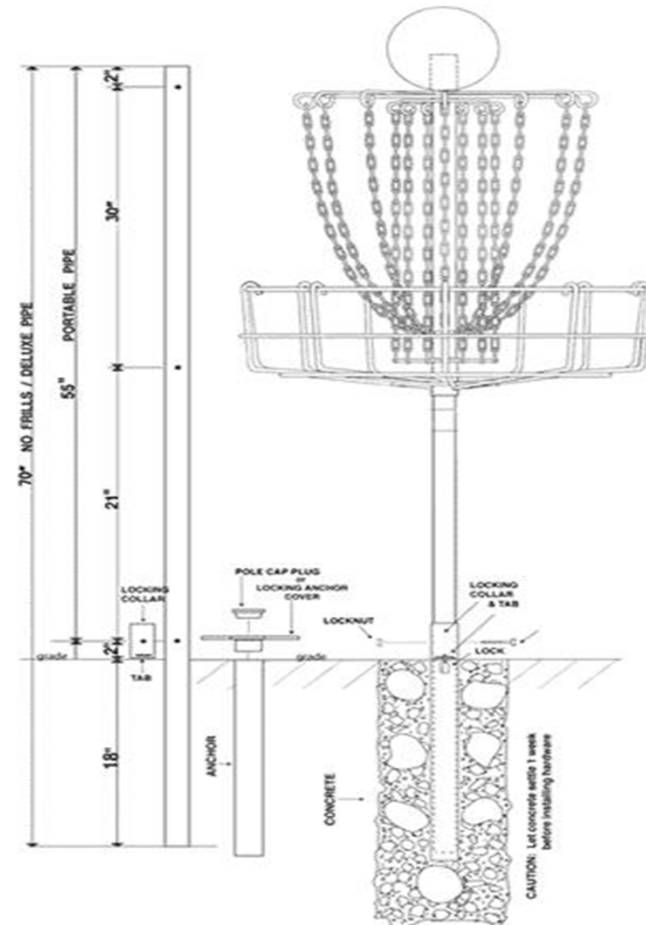
Tee Pad Installation

Each hole would have one tee box. The tee box would be made of an 5' x 10' redwood framed box filled with compacted decomposed granite, and a ½' thick non slip rubber mat. We estimate that 18 tees of this size would be required.



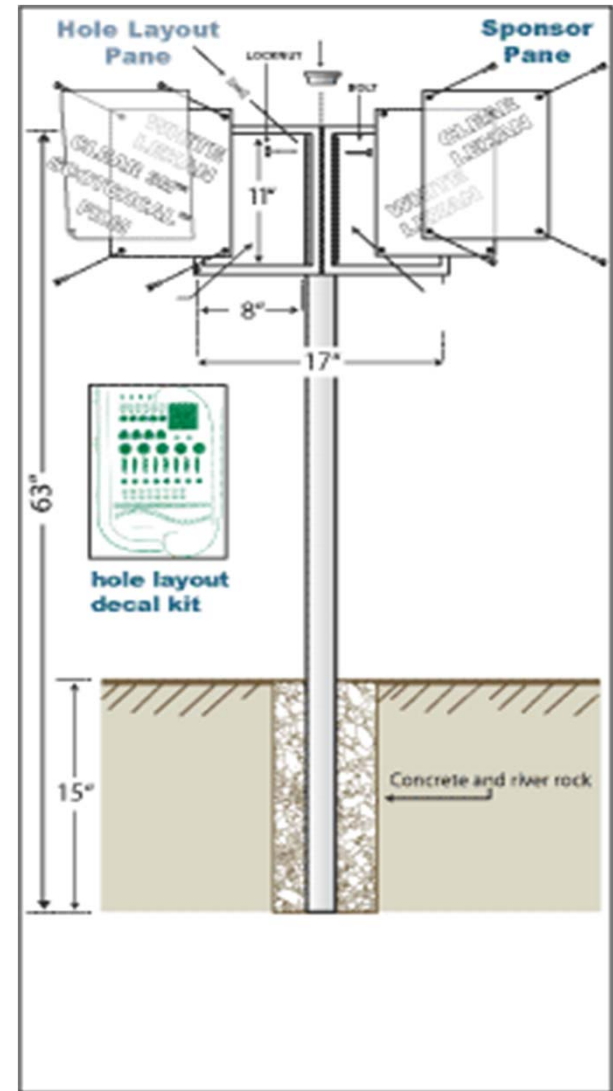
Basket Installation

Each hole would have a basket mounted on a pipe that slides inside an anchor pipe that gets cemented into a hole measuring approximately 8" in diameter and 18-24" deep. The basket pipe and anchor pipe each have collar tabs that line up and are securely locked with a padlock. Each hole would have 2-3 additional anchors installed so that the basket could be moved to periodically reduce soil compacting and erosion.



Tee Sign Installation

Tee signs are very important to help first time users find their way through the course. Each hole would have a sign indicating the number, length, recommended flight path and par. In addition, a rules sign, course map and information board would be installed before the first hole.



What Maintenance Is Required For a Disc Golf Course?

After installation, the maintenance needs for a disc golf course are primarily grass mowing. Unlike weekly mowing usually required for ball fields, mowing for disc golf can be stretched to three to four times a year (depending on rainfall). And even then, only the fairways need attention.

The targets are made of welded steel anchored in concrete and need no regular maintenance.

Much of the area of the proposed course is underutilized and not highly maintained. Under the proper supervision of the Kelley Park staff, Silicon Valley Disc Golf Club volunteers would be eager to undertake an initial clean up of these areas and then maintain them as trash-free zones.

Walking pathways used by players may need occasional maintenance to prevent erosion and soil compacting. Club volunteers would also be willing to help under proper supervision.



How Much Land Is Needed?

An 18-hole course would cover approximately 20 - 25 acres, depending on design. The rough rule of thumb for total space needed is about one acre per hole. A significant advantage of disc golf is its ability to utilize areas that are not very desirable or usable for other activities.

In addition, a disc golf course need not be an exclusive use area – it can co-exist amicably with other active and passive recreation uses such as hiking, dog-walking, etc. Finally, the relative portability of baskets and signs allows the park department to inexpensively relocate the course to another site as the needs of the master plan dictate.



How does the project benefit the community?

The installation of a disc golf course in Kelley Park would benefit the surrounding community by increasing and enhancing recreational opportunities, park safety and conservation goals.

Recreational Needs



- A Disc Golf course would provide an inexpensive form of recreation for people of all age and skill levels and be a great addition to the recreational facilities at Kelley Park.
- Given the high density of housing developments and San Jose State College in the immediate vicinity of the park, the installation of a disc golf course would provide an important recreational resource for the schools surrounding the park, as well as for the community.
- A disc golf course would give youth in the neighborhood a healthy and challenging outlet for their energies and would allow members of the Silicon Valley Disc Golf Club to organize clinics and youth leagues.
- For the growing number of disc golfers in San Jose and the Bay Area, the presence of a 18-hole disc golf course in the city limits would obviate the need to travel to play and would give them a base from which to further promote the sport.



Park Safety

- A disc golf course at Kelley would increase foot traffic in the Park at random times during the day and steadily during evenings and weekends. The influx of purposeful visitors would discourage the presence of individuals who are only in the park to cause mischief and perhaps engage in crime.
- Areas that are infrequently used and considered unsafe would be "opened-up" by the course. As many Recreations Departments observed, the installation of a disc golf course has led to significant decreases in vandalism and litter as users have a stake in keeping the course and surrounding area clean and well-kept.



Conservation

- Disc golf can be an environment-friendly sport. Unlike traditional golf, a disc golf course may not require trees to be removed, grass mowed and watered daily, plants uprooted or non-native species planted.
- The impact of a disc golf course on the surrounding area is minimal. Each hole has multiple pin placements, ensuring that no one area gets constant foot traffic.
- In addition, disc golfers overall tend to take great pride in where they play, helping reduce potential litter on the course. In the long-term, a disc golf course would also help in the preservation of the park by giving young people in the neighborhood a stake in its preservation and protection.



Economics

A deluxe 18-hole disc golf course with tees, professional signs and baskets can be purchased and installed for under \$20,000. This is less than the cost of a single tennis or basketball court. A 18-hole course can serve more than 100 people at any time, compared with a tennis court (4 maximum) or basketball court (10 maximum).

Funding for a Disc Golf course at Kelley Park



The Silicon Valley Disc Golf Club will work to secure the funding for the course equipment and installation through donations from the community and hole sponsorships. Hole sponsors will have their names on the tee sign for the hole they sponsor.

Cost Estimates

Cost Estimate for 18-hole Disc Golf Course at Kelley Park			
		Cost	Comments
1/2" Fly 18 Tee Pad			
Qty 18 Pre Cut Pads w/ Hardware		\$2,610.00	
Shipping Cost (per 9 pads) X2		\$900.00	
Total 18 Tee Pads		\$3,510.00	Total for 1/2" Fly18 Tee Pads
5'x10' pad weighs 98lbs		\$195.00	Cost Per Hole
Durability - 12 years / Heavy Play			
Course Hardware			
Mach New V™ Deluxe		\$6,444.00	
Practice Basket		\$358.00	
Number Plate Conversion		\$450.00	
Sponsor Tee Signs		\$1,890.00	
Rules Signs		\$60.00	
Addition Anchor Sleeves		\$1,386.00	
Taxes @ 9.5%		\$1,005.86	
		\$11,593.86	Total for Course Hardware
		\$644.10	Cost Per Hole
Installation Materials			
1 Ton of decomposed granite per Tee Pad		\$432.00	\$24 per Ton
Delivery Charge for up to 10 Tons		\$140.00	
2"x4" Tee Pad Forms		\$720.00	Need Qty 4 - 2"x4"x10'
Concrete - 3 bags/Pin (3 pins per Hole)		\$216.00	Concrete @ \$4 per bag
Concrete - 2 bags/Sign		\$144.00	Concrete @ \$4 per bag
Taxes @ 9.5%		\$143.64	
		\$1,795.64	Total for Installation Materials
		\$99.76	Cost Per Hole
Miscellaneous Expenses			
Food / Drinks for Volunteer Workers		\$400.00	
Fuel, Rental fees		\$200.00	
		\$600.00	Totals for Misc Expenses
		\$33.33	Cost Per Hole
Cost Estimate Totals			
Tee Pads		\$3,510.00	
Course Hardware		\$11,593.86	
Installation Materials		\$1,795.64	
Misc Expenses		\$600.00	
		\$17,499.50	Total Cost
		\$972.19	Cost per Hole

Information about The Silicon Valley Disc Golf Club

- The Silicon Valley Disc Golf Club is a California Public Benefit Non Profit Corporation that has acquired a 501(c)3 designation with the IRS.
- The SVDGC was incorporated in 1998 and has installed and maintained two 9 Hole courses in Santa Clara County Parks.
- The SVDGC has worked with many community organizations to expose youth to the fun and challenges of Disc Golf.
- The SVDGC has dedicated many hours of volunteer work with the Santa Clara County Parks to help maintain and improve the courses at Hellyer and LaRaza Parks.





Thank You for your consideration

The Silicon Valley Disc Golf Club thanks you for your consideration of this proposal to install a Disc Golf Course at Kelley Park.

If any additional information is needed or you have questions concerning our proposal please feel free to contact Silicon Valley Disc Golf Club officers

Jim Challas

408.802.1074

jim@svmtg.com

Steve Schmidt

408.802.0055

Smitty@svdgc.org