

LIBRARY

The San José Public Library's mission is to enrich lives by fostering lifelong learning and by ensuring that every member of the community has access to a vast array of ideas and information.

LIBRARY

The San José Public Library consists of 24 libraries, including the main Dr. Martin Luther King, Jr. Library downtown, and branches in neighborhoods across the City. The Library offers materials in various formats including books, CDs, DVDs, eBooks, online learning tools, and online database services. The Library also provides programs such as computer programming, English as a Second Language, summer reading, literacy assistance, and story times.

In 2016-17, the Library's operating budget totaled \$38.7 million. Staffing totaled 360 full time equivalent authorized positions, with a total of more than 600 staff. This represents a slight increase from a year ago.

The City's libraries were open over 58,000 hours in 2016-17. This represented the most hours the City's libraries have been open in any of the past ten years.

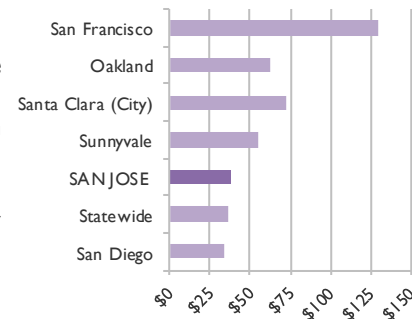
To increase library accessibility, the Library continued strategies to reduce the amount of money owed in library fines and fees. Programs such as Volunteer Away Your Fines and Read Away Your Fines removed \$350,179 in fines and fees and allowed 22,217 customers to regain library access.

Of San José respondents to the resident survey, 75 percent rated the quality of public library services as good or excellent.

KEY FACTS (2016-17)

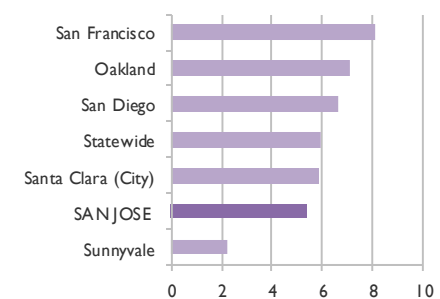
Libraries open	24
Weekly library visitors	130,451
Total library materials	2,342,986
Number of eBooks/eMedia	292,221
Number of items checked out (including eBooks)	9,196,257
Number of registered borrowers	539,789
Number of reference questions (estimated)	1,076,348

Expenditures Per Capita (2015-16)



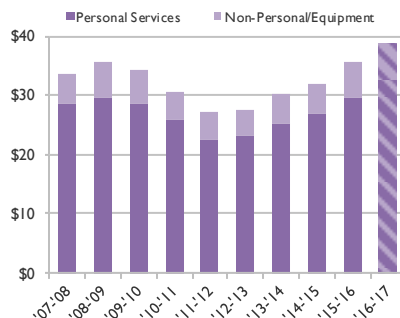
Source: [California State Library, 2015-2016 Summary Data](#)

Hours Open Per 100 People (2015-16)

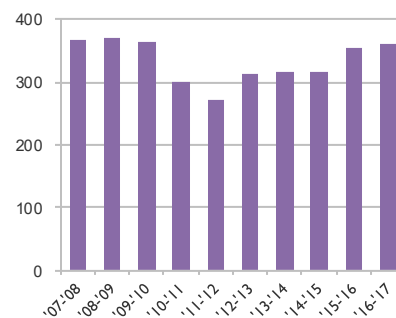


Source: [California State Library, 2015-2016 Summary Data](#)

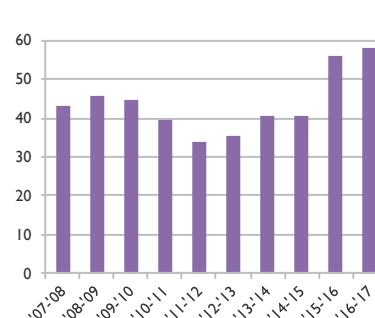
Library Operating Budget (\$millions)



Library Authorized Positions

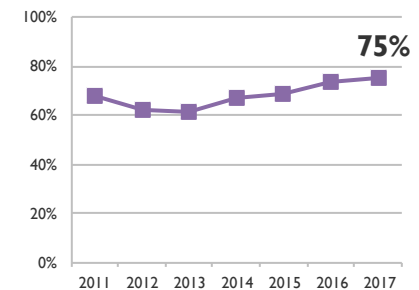


Total Hours Open Annually (thousands)



RESIDENT SURVEY

% of San José residents rating library services as "good" or "excellent"



Note: 2016-17 is adopted budget data. All other years are actual expenses.

LIBRARY COLLECTION AND CIRCULATION

In 2016-17, the Library’s collection totaled 2.3 million items, including 1.7 million print materials (such as books and periodicals), and 292,000 eResources (eBooks, eMagazines, eMusic, eMovies, and online learning tools). The Library also provides access to subscription-based online resources on a variety of topics, such as career development, technology training, consumer resources, language learning, and online high school classes.

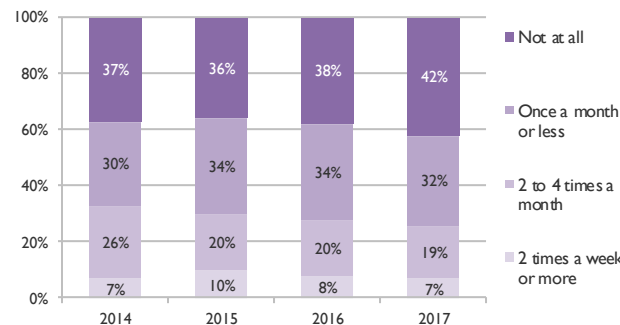
Total circulation in 2016-17 (including eBooks) was 9.2 million. Circulation has trended down since 2008-09, when it peaked at more than 15 million. eResource circulation continues to grow, however, tracking such usage is a challenge that the Library is trying to address. San José’s 2015-16 circulation per capita (excluding eBooks) was higher than the statewide mean.

58 percent of respondents to the resident survey indicated they, or someone in their household, used San José libraries at least once in the last twelve months. Library borrowers placed about 512,000 online holds to reserve materials, a 12 percent increase from a year ago.

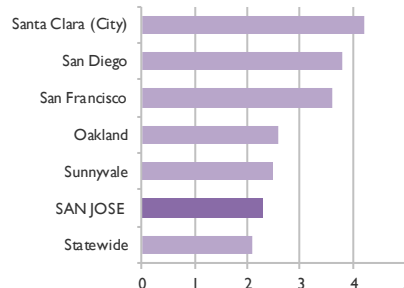
Approximately 16 percent of the Library’s collection includes materials in languages other than English (370,000 items). The Library actively collects materials in 19 languages, including Spanish, Vietnamese, Chinese, Hindi, Persian, Tagalog, Russian, Korean, and Japanese.

RESIDENT SURVEY

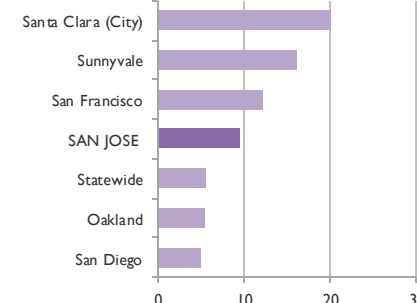
In the last 12 months, about how many times have you or other household members used San José public libraries or their services?



Materials Per Capita (2015-16)



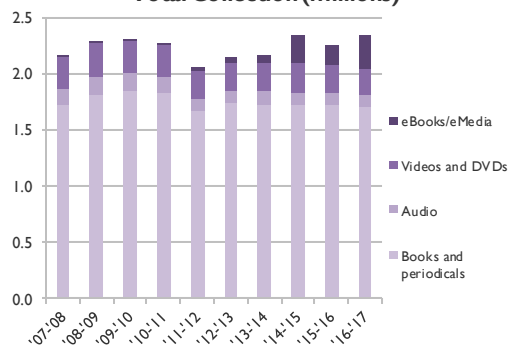
Circulation Per Capita (2015-16)



Source: [California State Library, 2015-2016 Summary Data](#)

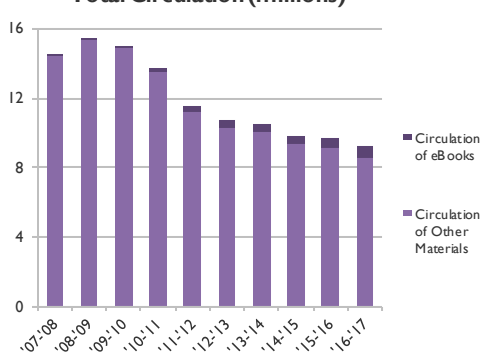
Source: [California State Library, 2015-2016 Summary Data](#) (does not include eBooks)

Total Collection (millions)

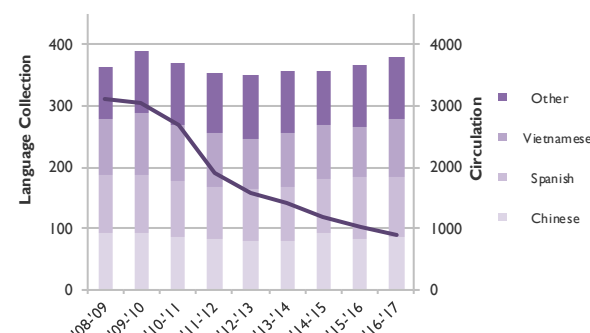


*In 2014-15, the methodology to tabulate eBooks changed. Prior data may not be comparable.

Total Circulation (millions)



Non-English Collection and Circulation (thousands)



LIBRARY

The Library leads the City's Education and Digital Literacy Initiative to improve educational outcomes through technology. In 2016-17, 495 children enrolled in City-run preschool programming supported by the Library, 2,000 children and teens attended coding classes and STEM programs at City libraries, and 3,500 youth participated in K-8 Afterschool and Summer Programming.

The City's libraries to promote reading and literacy, and support school readiness. Programs include adult and family literacy programs, preschool and early education initiatives, story time programs, summer reading programs, digital literacy programs, and more. More information about Library programs can be found at events.sjpl.org.

In 2016-17, libraries offered over 16,500 programs, with attendance totaling 356,835. In 2016-17, participants in the summer reading program totaled 19,339. Beginning in FY 2016-17, SJPL Works, the Library's business and workforce development center began holding programs. SJPL Works offered 133 programs business programs, with attendance totaling 1,358 participants. Volunteers contributed over 93,000 hours to the Library in 2016-17. Among the services provided by volunteers were math and coding tutoring, and reading to young children.

The number of computer sessions on library-owned computers remained about the same as last year at about 1.2 million in 2016-17. The addition of Wi-Fi services in 2009-10 enables customers to use their own devices, and in 2016-17, a total of 408,000 users connected to the internet via the branch library Wi-Fi. At several branches, customers can also checkout laptops and tablets for in-library use.

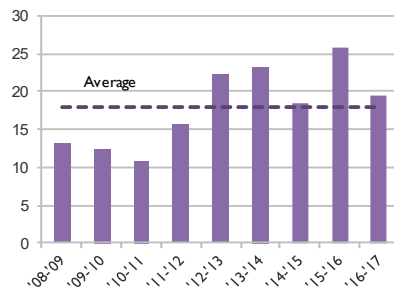


Source: San José Library Department

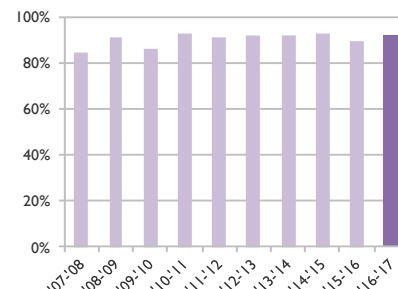


Source: San José Library Department

Participants in Summer Reading Program (thousands)*

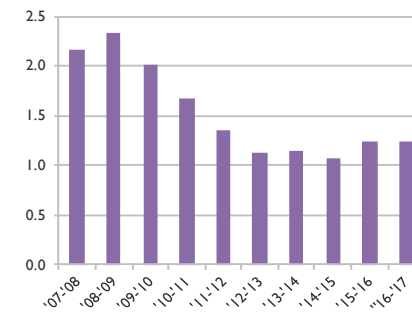


Percent of Library Customers Rating Staff Assistance as Good or Excellent*



Source: Library customer surveys.
*In 2016-17, the methodology to tabulate staff assistance changed. Prior data may not be comparable.

Computer Sessions in Library (millions)**



**Does not include wireless connections or use of personal devices.

SAN JOSE BRANCH LIBRARIES

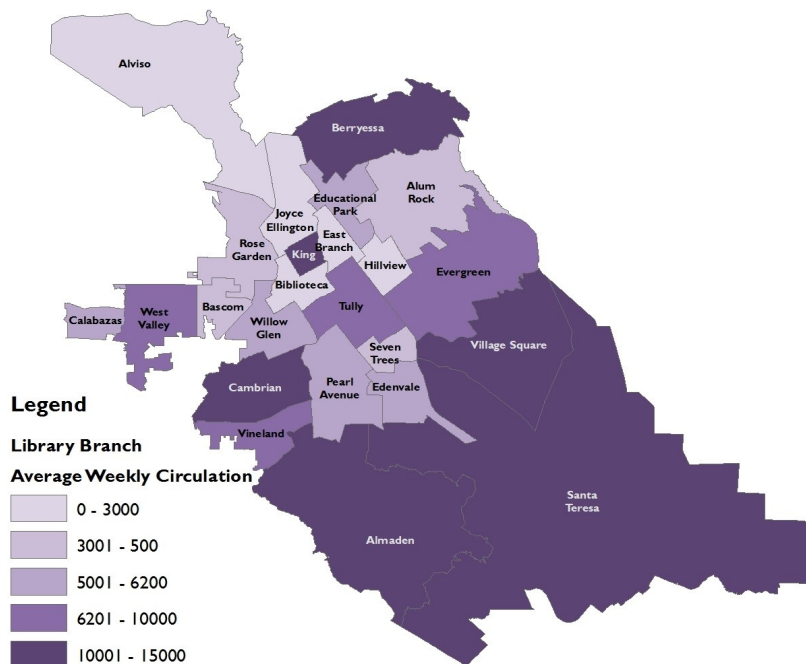
In FY 2016-17, City libraries had 6.8 million visitors. About 38 percent (2.6 million) of all visitors went to the main (Dr. Martin Luther King Jr.) library. Circulation and the number of visitors in 2016-17 varied significantly across locations. High visitation branches include Berryessa, Tully, Almaden, and Village Square. Other high circulation branches included the main library, Berryessa, Cambrian, and Santa Teresa.

In 2016-17, the King Library was open 77 hours per week during the academic year (compared to 81 hours in 2009-10). In 2016-17, all branches were open 47 hours per week. Sunday hours have not been offered at any branch since July 2010. Branch open hours decreased between 2010-11 and 2014-15 before being reinstated to 2009-10 levels of 47 hours per week in FY 2015-16.

In 2015, the Library began operating a Bridge Library Program to serve neighborhoods without ready access to branch libraries. The Library currently operates Bridge Libraries at the Educare campus in the Santee neighborhood, and at the César Chavez Elementary School in the Mayfair neighborhood. During FY 2016-17, 1,055 children and adults attended programs presented by Library staff at the Bridge Libraries.

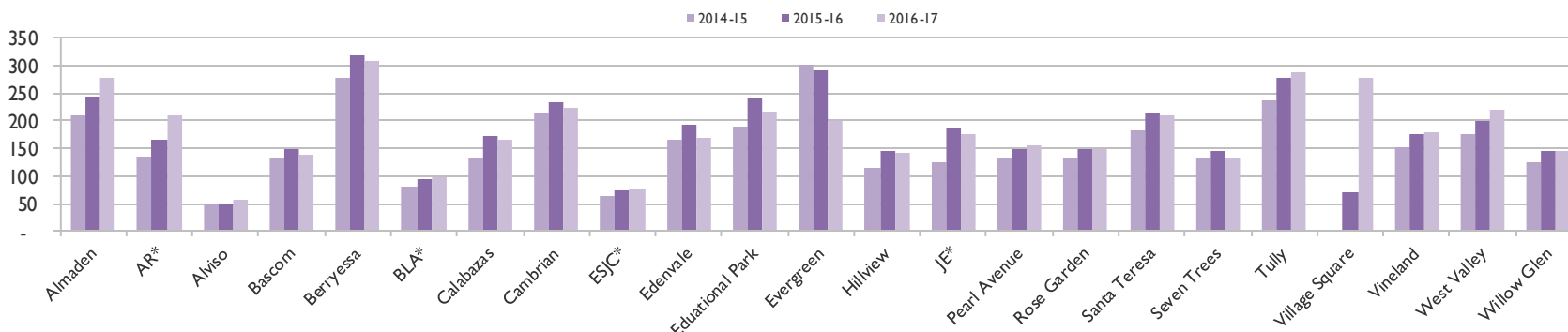
In November 2000, voters approved a Branch Library Bond Measure, dedicating \$212 million over ten years for the construction of 6 new and 14 expanded branch libraries in San José. The final planned project—the Village Square branch — opened in April 2016.

Average Weekly Circulation by Branch Service Area, 2016-17



Note: Library service areas determined by census tracts.

Branch Library Visitors (thousands)



* AR = Dr. Roberto Cruz Alum Rock; BLA = Biblioteca Latinoamericana; ESJC = East San José Carnegie; JE = Joyce Ellington; Dr. Martin Luther King, Jr. Library not listed.
 Note: The Village Square branch opened in April 2016.

