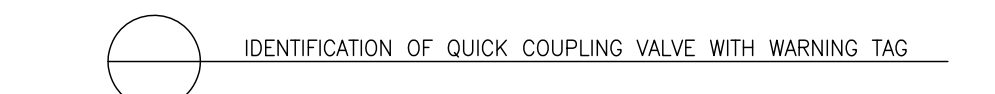
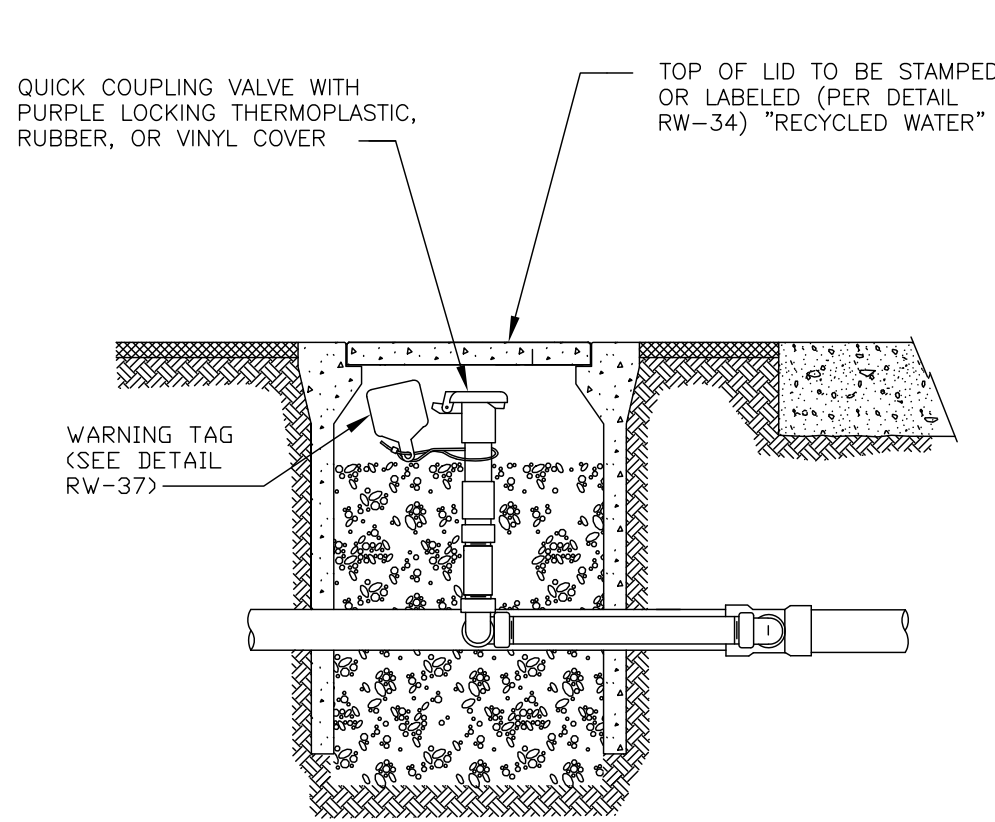
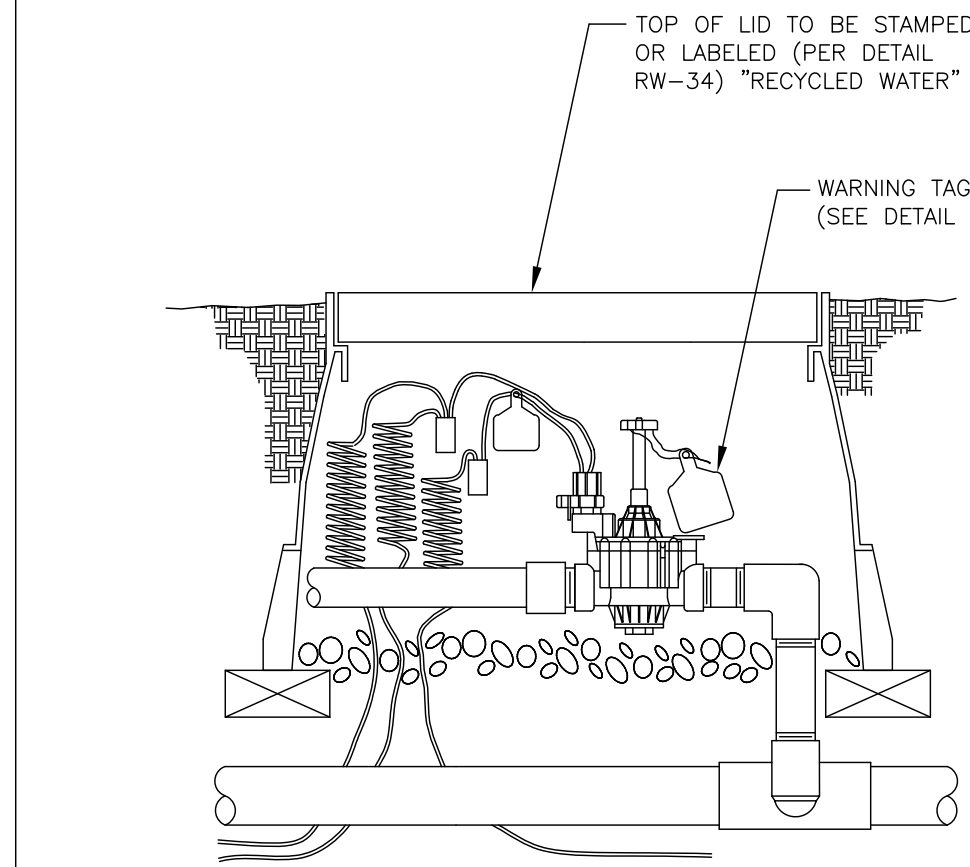


SOUTH BAY WATER RECYCLING (SBWR) STANDARD NOTES AND DETAILS FOR RECYCLED WATER SYSTEMS:

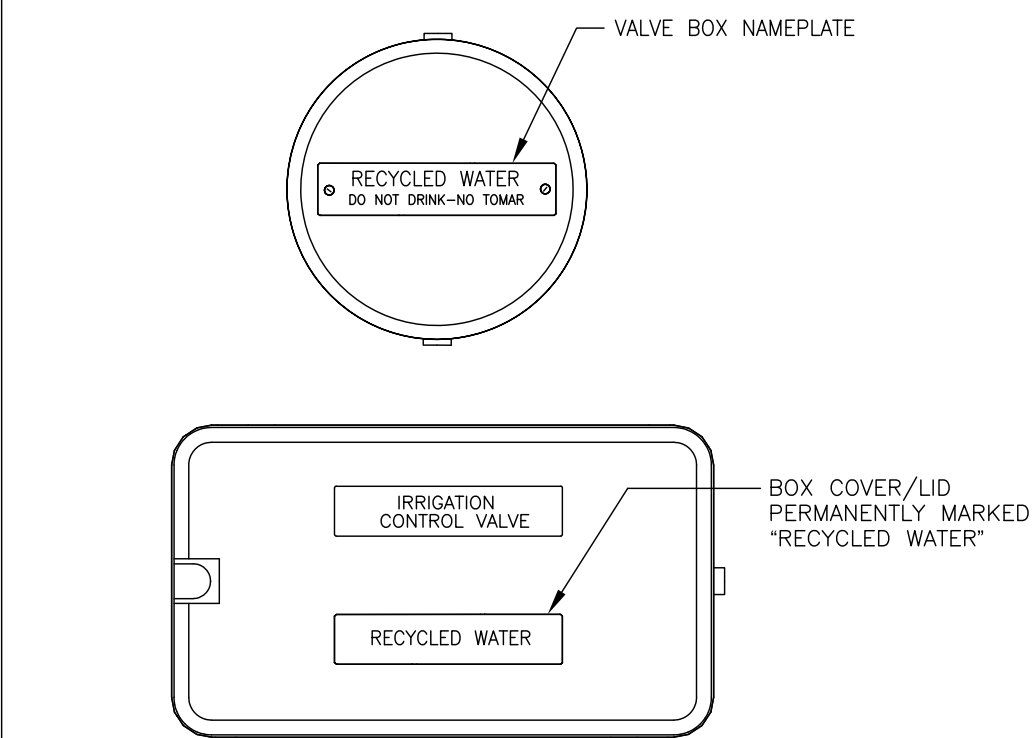
- PRIOR TO RECEIVING RECYCLED WATER, THE RECYCLED WATER SYSTEM MUST BE PERMITTED BY SOUTH BAY WATER RECYCLING (SBWR). A PERMIT WILL BE GRANTED AFTER:
 - INSPECTIONS BY THE RETAILER HAVE BEEN COMPLETED SHOWING CONFORMANCE WITH SBWR RULES AND REGULATIONS (<http://www.sanjoseca.gov/sbwr>).
 - A FINAL RECYCLED WATER SYSTEM INSPECTION HAS BEEN CONDUCTED TO CONFIRM THAT ALL REQUIREMENTS HAVE BEEN MET.
 - THE CUSTOMER HAS PROVIDED THE RETAILER INSPECTOR WITH THE MOST CURRENT BACKFLOW PREVENTION DEVICE TEST REPORTS FOR ALL OF THE POTABLE WATER AND FIRE SERVICE CONNECTIONS (AND ANY AUXILIARY WATER SOURCES).
 - THE RECYCLED WATER SYSTEM HAS PASSED A CROSS-CONNECTION TEST PERFORMED BY A CERTIFIED AWWA CROSS-CONNECTION TEST SPECIALIST IN THE PRESENCE OF THE RETAILER AND CERTIFIED SITE SUPERVISOR. THIS APPLIES TO NEW, MODIFIED OR RETROFIT SYSTEMS.
- ALL WORK SHALL CONFORM TO EXISTING REGULATIONS INCLUDING BUT NOT LIMITED TO:
 - SBWR RULES AND REGULATIONS
 - STATE WATER RESOURCES CONTROL BOARD – DIVISION OF DRINKING WATER REGULATIONS
- PROPOSED CHANGES TO THE DDW APPROVED PLANS SHALL BE SUBMITTED TO THE RETAILER AND SBWR FOR REVIEW.
- AT LEAST TWO DAYS PRIOR TO START OF CONSTRUCTION, THE CONTRACTOR AND RETAILER INSPECTOR SHALL HOLD A PRE-CONSTRUCTION MEETING.
- NOTIFY RETAILER INSPECTOR A MINIMUM OF AT LEAST 24 HRS BEFORE WORK BEGINS. RETAILER INSPECTOR MUST INSPECT AND/OR VERIFY:
 - PRESENCE OF PROPER BACKFLOW PREVENTION AT ALL POTABLE POINTS OF CONNECTION; NEW UNDERGROUND PIPING (LABELING, CLEARANCES, BURIAL DEPTH, SLEEVING);
 - INSTALLATION OF SIGNS, TAGS, AND CONTROLLER DECALS.
 - REQUIRED TEMPORARY CONNECTION TO POTABLE WATER SERVICE. IN MOST CASES, THE RECYCLED WATER SYSTEM MUST BE CONNECTED TO A TEMPORARY SOURCE OF POTABLE WATER IN ORDER TO CONDUCT REQUIRED CROSS-CONNECTION TEST;
 - RECYCLED WATER SYSTEM PASSED THE REQUIRED CROSS-CONNECTION TEST PERFORMED BY A CERTIFIED AWWA CROSS-CONNECTION SPECIALIST
 - NEW METER INSTALLATION – PRIOR TO RECEIVING RECYCLED WATER, RETAILER INSPECTOR MUST INSPECT THE DISCONNECTION OF THE RECYCLED WATER SYSTEM FROM THE TEMPORARY POTABLE WATER SUPPLY, AND THEN INSPECT THE CONNECTION OF THE SYSTEM TO THE RECYCLED WATER METER.
- NO CROSS-CONNECTIONS BETWEEN THE RECYCLED WATER SYSTEM AND ANY OTHER WATER SYSTEMS ARE PERMITTED.
- ALL BURIED RECYCLED WATER PIPING SHALL BE IDENTIFIED BY ONE OF THE FOLLOWING METHODS:
 - USING PURPLE-COLORED PVC PIPE WITH CONTINUOUS WORDING: "CAUTION – RECYCLED WATER" PRINTED ON OPPOSITE SIDES OF THE PIPE. PIPE SHALL BE LAID WITH WORDING FACING UPWARDS.
 - WARNING TAPE WITH A MINIMUM WIDTH OF 3 INCHES READING: "CAUTION – RECYCLED WATER" IN BLACK OR WHITE LETTERING ON PURPLE BACKGROUND) SHALL RUN CONTINUOUSLY ON TOP OF PIPING AND SHALL BE ATTACHED TO PIPING WITH PLASTIC TAPE BANDED AROUND THE WARNING TAPE AND THE PIPE EVERY 5 FEET ON CENTER.
 - BLUE-COLORED PVC PIPE SHALL NOT BE USED UNLESS THE BLUE COLOR IS COMPLETELY OBSCURED BY ENCASEMENT OF THE PIPE WITH PURPLE POLYETHYLENE WRAP OR OTHER METHODS APPROVED BY SBWR.
- PVC PIPE: CONSTANT-PRESSURE MAINLINE PIPING 1 1/2 INCHES AND SMALLER SHALL BE SCHEDULE 40; CONSTANT-PRESSURE MAINLINE PIPING 2 INCHES AND LARGER SHALL BE CLASS 315 OR C900 CLASS 200 DR 14; INTERMITTENT-PRESSURE LATERAL PIPING SHALL BE SCHEDULE 40 OR CLASS 200. BURIED COPPER PIPE SHALL BE TYPE "K". SEE DETAIL RW-RNR1.
- ALL ON-SITE RECYCLED WATER PIPING SHALL BE BURIED TO A MINIMUM DEPTH (SEE DETAIL RW-RNR1) FROM FINISHED GRADE TO TOP OF PIPE (MINIMUM COVER) OF:
 - PRESSURIZED LINES 3 INCHES AND LARGER 24 INCHES
 - PRESSURIZED LINES 2 1/2 INCHES AND SMALLER 18 INCHES
 - INTERMITTENT-PRESSURE LINES 12 INCHES



	RECYCLED WATER USE SITE IDENTIFICATION DETAILS
SCALE: NTS	RW-22



	RECYCLED WATER USE SITE IDENTIFICATION DETAILS
SCALE: NTS	RW-32



	RECYCLED WATER USE SITE IDENTIFICATION DETAILS
SCALE: NTS	RW-34

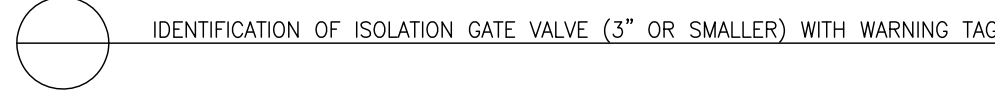
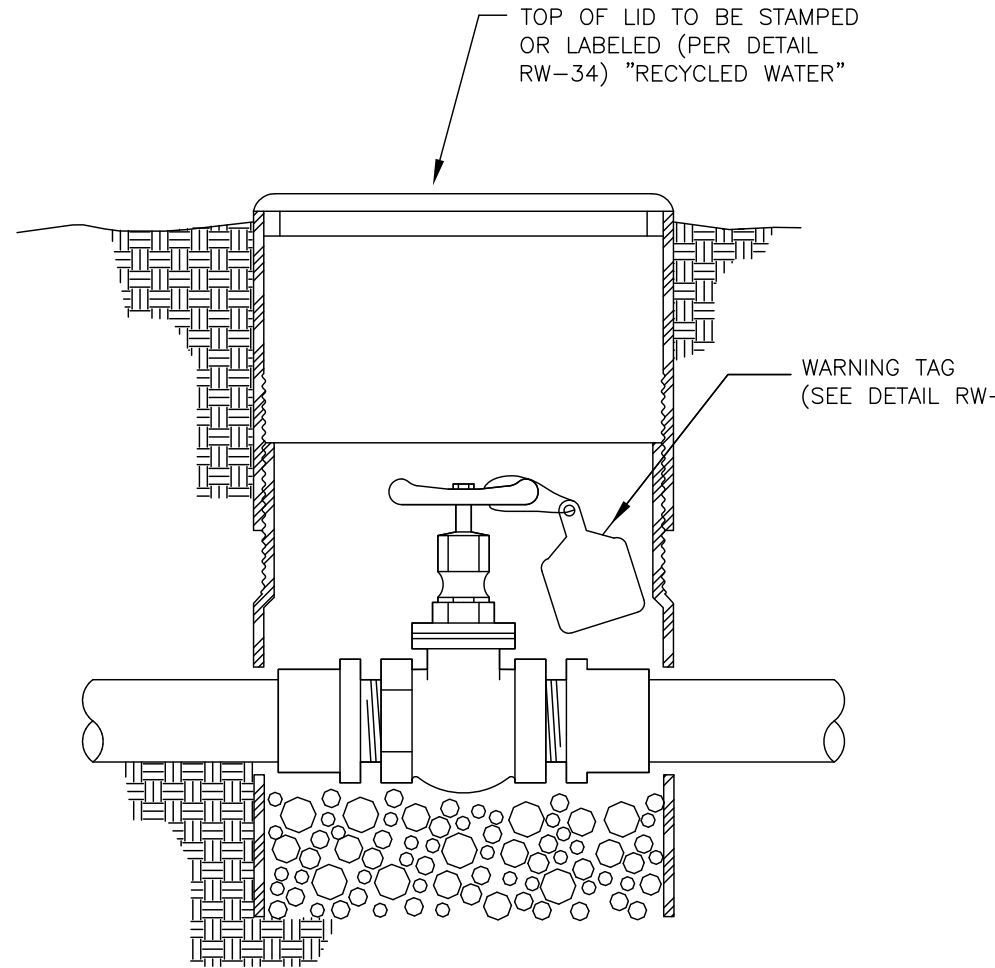


SAMPLE WARNING TAG. BACKGROUND PURPLE (PANTONE 512) WITH BLACK LETTERING.

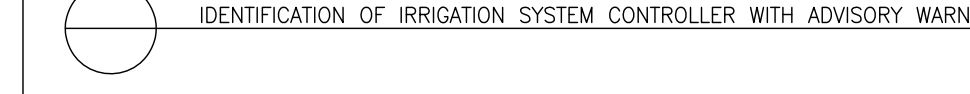
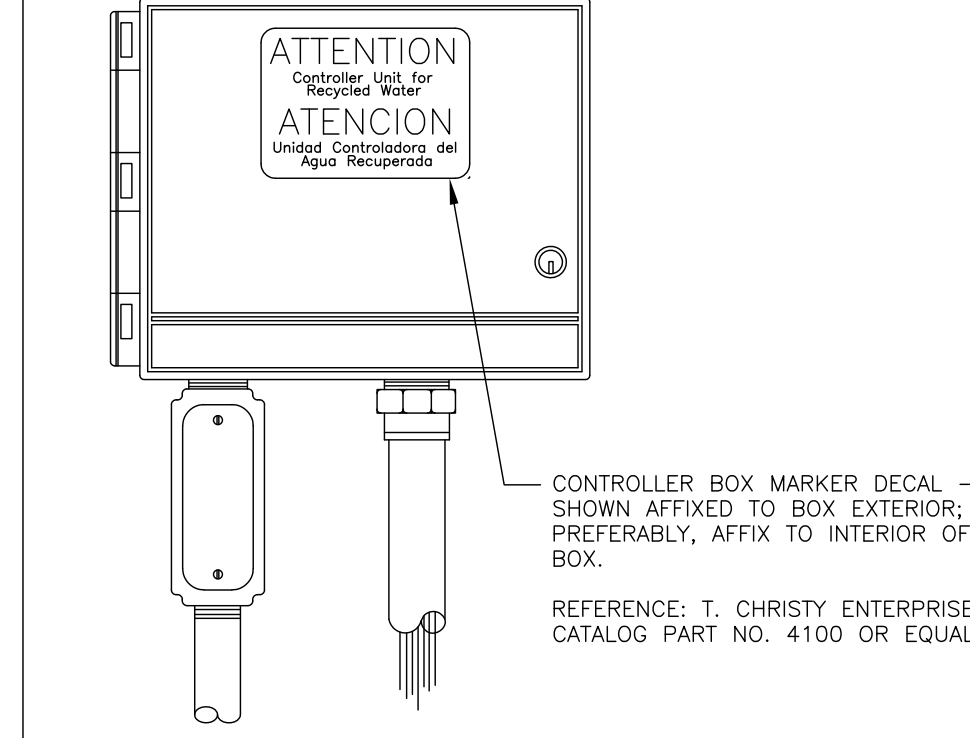


	RECYCLED WATER USE SITE IDENTIFICATION DETAILS
SCALE: NTS	RW-37

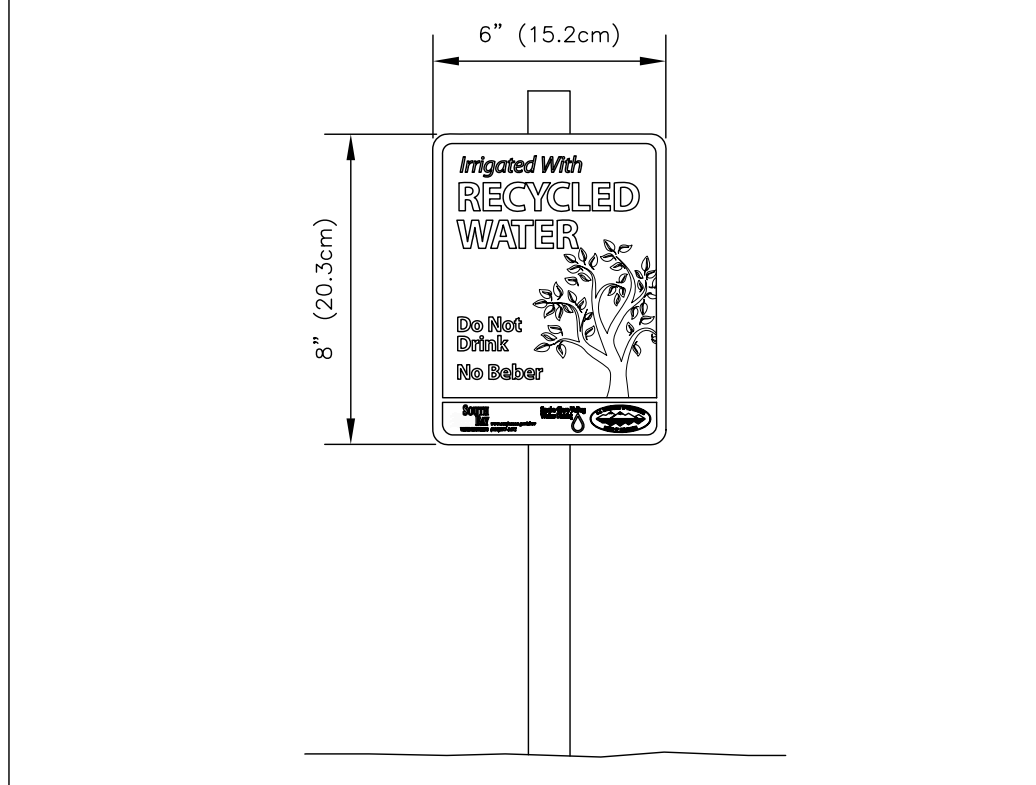
- ALL RECYCLED WATER PIPE OTHER THAN PVC PIPE WITH SOLVENT WELDED JOINTS SHALL BE PROTECTED AGAINST MOVEMENT WITH THRUST BLOCKS OR RESTRAINED JOINTS OR OTHER APPROVED METHODS PER SBWR DETAILS.
- MAINTAIN A 10-FOOT HORIZONTAL SEPARATION BETWEEN BURIED PRESSURIZED RECYCLED WATER IRRIGATION PIPING AND BURIED POTABLE WATER PIPING UNLESS OTHERWISE NOTED. AT PIPE CROSSINGS, BURIED PRESSURIZED RECYCLED WATER IRRIGATION PIPING MUST BE 12 INCHES BELOW POTABLE WATER LINES. PRESSURIZED RECYCLED WATER PIPELINES ARE ALLOWED OVER POTABLE WATER PIPELINES WITH A MINIMUM OF 12 INCHES VERTICAL SEPARATION IF A FULL STANDARD PIPE LENGTH IS CENTERED OVER THE CROSSING, OR THE RECYCLED WATER PIPELINE IS INSTALLED IN A PIPE SLEEVE WHICH EXTENDS A MINIMUM OF 10 FEET ON EITHER SIDE OF THE POTABLE WATER PIPING. INTERMITTENTLY PRESSURIZED IRRIGATION LATERALS MAY BE LOCATED A MINIMUM OF 12 INCHES ABOVE POTABLE WATER PIPELINES WITHOUT SLEEVING. SEE DETAIL RW-RNR1.
- ALL RECYCLED WATER SYSTEM REMOTE CONTROL VALVES, ISOLATION VALVES, QUICK COUPLING VALVES, STRAINERS, AND PRESSURE REDUCING VALVES SHALL BE INSTALLED BELOW GRADE IN VALVE BOXES. LIDS SHALL PERMANENTLY READ "RECYCLED WATER." GREEN OR PURPLE-COLORED PLASTIC BOXES AND LIDS, AND CONCRETE BOXES WITH CONCRETE OR METAL LIDS ARE ACCEPTABLE. FOR PLASTIC BOX LIDS, LETTERING SHALL BE IMPRINTED ON LID OR APPLIED USING A NAMEPLATE ATTACHED ONTO THE LID WITH RIVETS, SCREWS, OR BOLTS. FOR CONCRETE LIDS, LETTERING SHALL BE IMPRINTED ON LID FROM FACTORY. FOR CAST IRON AND METAL CHECKER PLATE LIDS, LETTERING MUST BE BEAD-WELDED OR PERMANENTLY STAMPED ONTO LID. SEE DETAIL RW-34.
- QUICK COUPLING VALVES SHALL HAVE PURPLE COVERS AND SHALL BE PER SBWR STANDARD DETAILS. SEE DETAIL RW-22.
- QUICK COUPLERS CAN ONLY BE USED FOR HAND WATERING AND MUST BE OPERATED BY SBWR TRAINED PERSONNEL AND/OR THEIR TRAINED STAFF. PROPER PROTECTION SHOULD BE TAKEN TO PROTECT THE PUBLIC FROM OVERSPRAY, ESPECIALLY IF THE PUBLIC IS PRESENT WHEN WATERING.
- NO HOSE BIBS ALLOWED ON THE RECYCLED WATER IRRIGATION SYSTEM. ANY EXTERIOR HOSE BIBS SERVED WITH POTABLE WATER MUST BE LABELED PER SBWR STANDARD DETAILS (CONTACT YOUR RETAILER).
- ALL RECYCLED WATER METERS, DEVICES, AND VALVES – E.G. ISOLATION VALVES, IRRIGATION CONTROLLERS, REMOTE CONTROL VALVES, PRESSURE REDUCING VALVES, QUICK COUPLING VALVES, FLOW SENSORS, ETC. – SHALL BE TAGGED. SEE DETAIL RW-37.
- LABEL ALL POTABLE WATER METERS AND ABOVE GROUND POTABLE WATER PIPES/ DEVICES (BACKFLOW PREVENTERS, HOSE BIBS, ETC.) WITH TAGS OR LABELS READING: "POTABLE WATER" IN BLACK LETTERS ON BLUE BACKGROUND, PER SBWR DETAILS.
- ALL RECYCLED WATER IRRIGATION SYSTEMS SHALL HAVE THE FOLLOWING (SEE DETAIL RW-38):
 - A SWING CHECK VALVE INSTALLED AS CLOSE AS PRACTICABLE TO THE RECYCLED WATER METER BOX (UNLESS OTHERWISE DIRECTED BY SBWR).
 - A WYE STRAINER (WITH A 20-MESH OR FINER SCREEN) INSTALLED IMMEDIATELY DOWNSTREAM OF THE SWING CHECK VALVE (IF NO SWING CHECK VALVE REQUIRED, THEN AS CLOSE AS PRACTICABLE TO THE RECYCLED WATER METER BOX).
 - A PRESSURE REDUCING VALVE INSTALLED IMMEDIATELY DOWNSTREAM OF THE STRAINER (UNLESS OTHERWISE DIRECTED BY SBWR).
 - THESE COMPONENTS SHALL BE INSTALLED WITH ISOLATION VALVES TO FACILITATE MAINTENANCE.
- RECYCLED WATER ADVISORY SIGNS SHALL BE PER SBWR STANDARD DETAILS AND SHALL BE POSTED PER LOCATIONS SHOWN ON IRRIGATION PLANS. SEE DETAIL RW-36.
- INSTALLATION OF DIRECT INJECTION SYSTEMS ON THE RECYCLED WATER IRRIGATION SYSTEM IS NOT PERMITTED.
- NO DRINKING FOUNTAINS OR EATING AREAS ALLOWED IN THE APPROVED RECYCLED WATER USE AREA UNLESS ADEQUATELY PROTECTED FROM OVERSPRAY.
- ALL RECYCLED WATER METERS WILL BE SET BY THE LOCAL WATER UTILITY AFTER:
 - THE RECYCLED WATER SYSTEM OWNER, DEVELOPER, OR CONTRACTOR HAS APPLIED FOR RECYCLED WATER SERVICE WITH THE RETAILER. THE WATER SERVICE AGREEMENT HAS BEEN APPROVED, AND ALL APPLICABLE FEES HAVE BEEN PAID.
 - THE RETAILER HAS RECEIVED A PERMIT FROM SBWR TO SET A RECYCLED WATER METERS.
- NO OVERSPRAY OR RUNOFF OF RECYCLED WATER IS ALLOWED ON ANY NON-APPROVED USE AREA. PONDING OF RECYCLED WATER DUE TO IRRIGATION IS NOT ALLOWED IN ANY AREA. UPON RECEIVING RECYCLED WATER, THE RECYCLED WATER IRRIGATION SYSTEM MUST PASS A COVERAGE TEST PERFORMED BY A RETAILER INSPECTOR.
- CONTRACTOR SHALL SUBMIT AS-BUILT PLANS TO THE RETAILER.



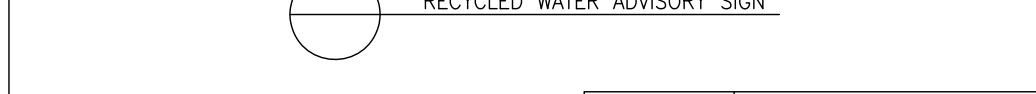
	RECYCLED WATER USE SITE IDENTIFICATION DETAILS
SCALE: NTS	RW-31



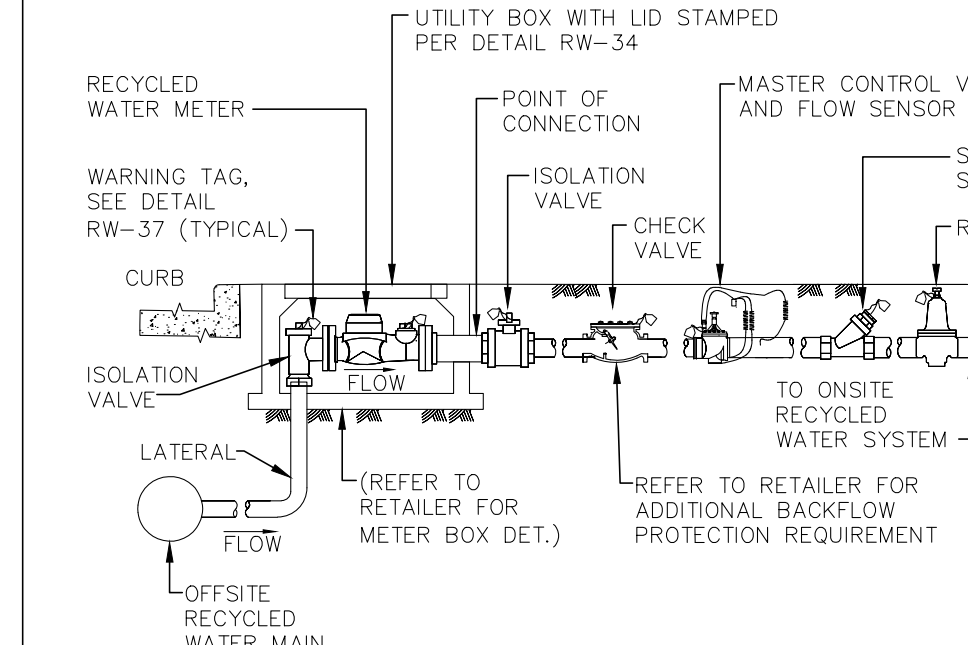
	RECYCLED WATER USE SITE IDENTIFICATION DETAILS
SCALE: NTS	RW-33



MOUNT SIGN SO THAT IT CLEARS HEIGHT OF SURROUNDING PLANTS WHEN THEY MATURE
APPROVED SIGNS MAY BE OBTAINED FROM SOUTH BAY WATER RECYCLING CONTACT (408) 277-3671 FOR MORE INFORMATION



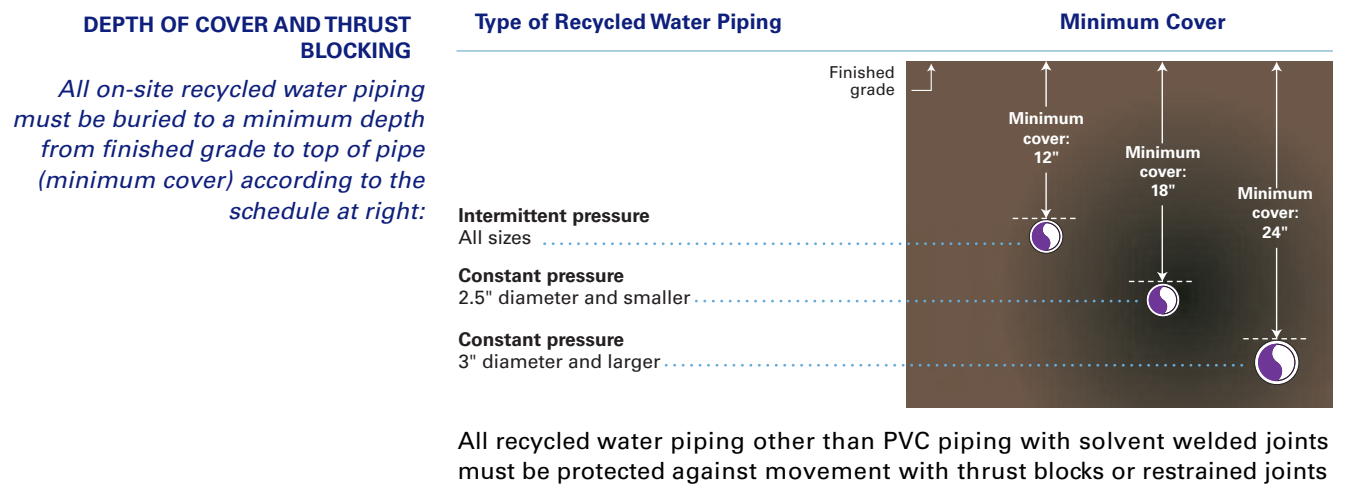
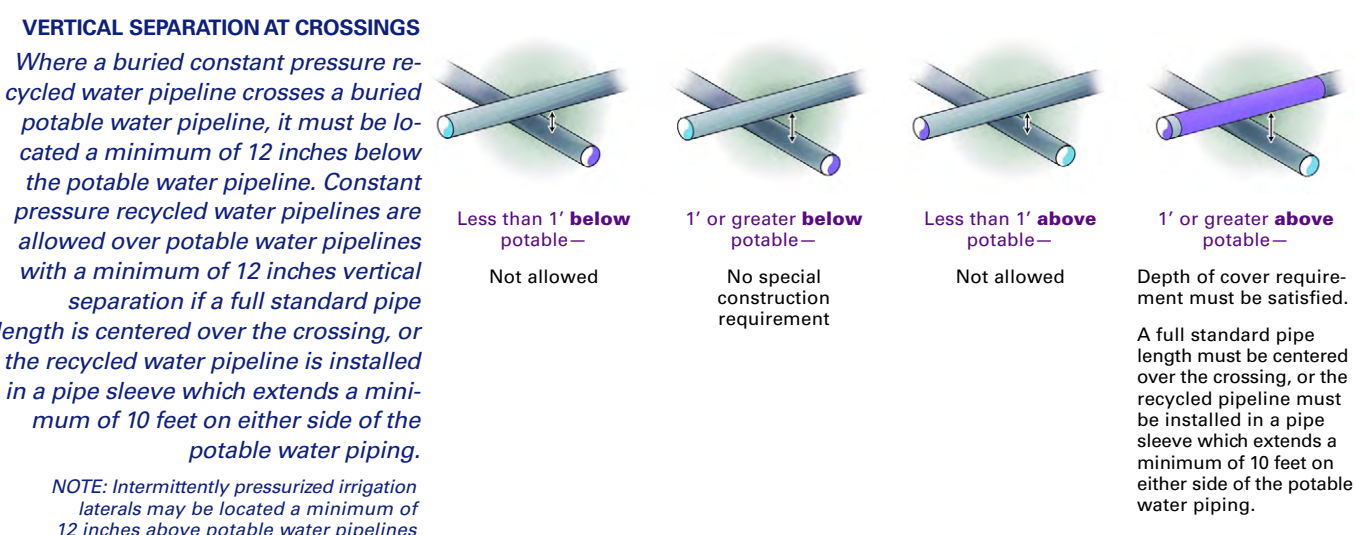
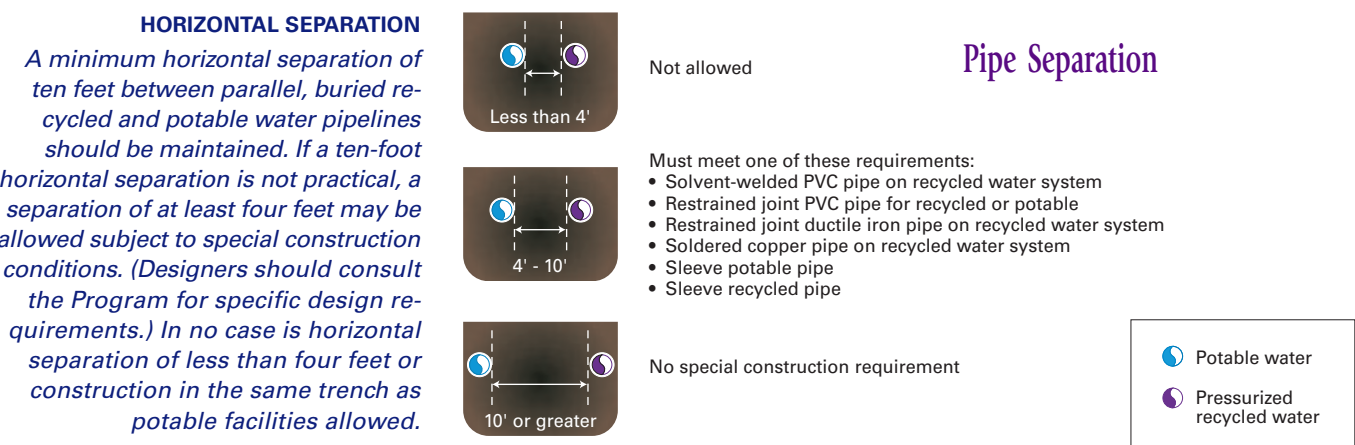
	RECYCLED WATER USE SITE IDENTIFICATION DETAILS
SCALE: NTS	RW-36



- NOTE:
- RECYCLED WATER SYSTEMS MUST FOLLOW CURRENT MODEL WATER EFFICIENT LANDSCAPE ORDINANCE (MWELO), CPC, AND IRRIGATION CODES.
 - ATTACH WARNING TAGS TO VALVES, SCREEN/STRAINER, AND REGULATOR.
 - SEE RW-37 FOR WARNING TAG DETAIL.



	STANDARD SERVICE CONNECTION WITH CHECK VALVE	DESIGNED: KX	DATE: 2/1/2021
	CITY OF SAN JOSE	DRAWN: KX	DWG. NO.
		CHECKED: HML	RW-38
		REC. APPROVED: HML	



- DUAL PLUMBED SYSTEMS (FOLLOW CURRENT CPC AND ...)**
- ALL EXPOSED EXTERIOR ABOVE GRADE RECYCLED WATER PIPING MUST BE LABELED WITH THE WORDS "RECYCLED WATER - DO NOT DRINK" AND COLOR-CODED PURPLE TO IDENTIFY IT AS CARRYING RECYCLED WATER. IF PURPLE IDENTIFICATION TAPE OR DECALS ARE USED TO LABEL AND/OR COLOR-CODE THE PIPING, THE TAPE OR DECALS MUST BE ADHESIVE, PERMANENT, AND RESISTANT TO COLOR FADING AND OTHER ENVIRONMENTAL CONDITIONS. THE TAPE OR DECALS MUST BE IMPRINTED IN NOMINAL THREE-QUARTERS-INCH (3/4") HIGH (OR OTHER HEIGHT ACCEPTABLE TO THE SBWR INSPECTOR), BLACK, UPPERCASE LETTERS AGAINST A PURPLE BACKGROUND. TAPE OR DECALS MUST BE AFFIXED ALONG A MINIMUM OF TWO (2) VISIBLE SIDES OF THE PIPING AT TEN-FOOT (10') INTERVALS AND WHEREVER THE PIPING CHANGES DIRECTIONS. PURPLE BANDS MAY ALSO BE PAINTED AROUND CIRCUMFERENCE OF THE PIPE FOR COLOR-CODING AT TEN-FOOT (10') INTERVALS AND WHEREVER THE PIPING CHANGES DIRECTIONS. PURPLE PVC PIPE IS NOT AN ACCEPTABLE ALTERNATIVE FOR COLOR-CODING BECAUSE THE PURPLE COLOR WILL FADE WHEN EXPOSED TO SUNLIGHT. CURRENT CPC SUPERCEDES THIS ITEM.
 - ALL OTHER RECYCLED WATER PIPE AND FITTINGS SHALL BE PAINTED PURPLE IN COLOR (PANTONE COLOR #512) AND SHALL BE LABELED WITH PURPLE COLORED MYLAR TAPE RUNNING CONTINUOUSLY ALONG THE ENTIRE LENGTH OF THE PIPE SO THAT THE WORDING IS CLEARLY VISIBLE. THE WRAPPING TAPE SHALL HAVE A MINIMUM NOMINAL THICKNESS OF FIVE TEN-THOUSANDS INCH (0.0005") AND A WIDTH OF TWO INCHES (2") TAPE SHALL BE FABRICATED OF POLYVINYL CHLORIDE WITH A SYNTHETIC RUBBER ADHESIVE AND A CLEAR POLYPROPYLENE PROTECTIVE COATING OR APPROVED EQUAL. THE TAPE SHALL BE PURPLE IN COLOR (PANTONE COLOR #512) AND SHALL BE IMPRINTED IN NOMINAL ONE-HALF-INCH (1/2") HIGH, BLACK, UPPERCASE LETTERS, WITH THE WORDS "CAUTION: RECYCLED WATER. DO NOT DRINK" REPEATING IN INTERVALS OF FOURTEEN INCHES (14"). THE LETTERING SHALL BE IMPRINTED IN TWO (2) PARALLEL LINES WITH A VERTICAL SPACING OF ONE-HALF-INCH (1/2") BETWEEN THE LINES OF TEXT. CURRENT CPC SUPERCEDES THIS ITEM.
 - PROVIDE ROOM ENTRANCE SIGN FOR RECYCLED WATER PER CURRENT CPC WITH THE EXCEPTION THAT THESE SIGNS SHALL READ: "TO CONSERVE WATER, THIS BUILDING USES RECYCLED WATER TO FLUSH TOILETS AND URINALS." THE LOCATION OF THE SIGNS SHALL BE SUCH THAT THE SIGNS SHALL BE VISIBLE TO ALL USERS. THE NUMBER AND LOCATION OF THE SIGNS SHALL BE APPROVED BY THE CITY INSPECTOR.
 - PROVIDE A SIGN FOR EACH RECYCLED WATER SYSTEM MECHANICAL/EQUIPMENT ROOM DOOR, RESTROOM DOOR, VALVE ACCESS DOOR WITHIN A WALL, PER THE EXCEPTION THAT THE TERM "RECLAIMED" SHALL BE REPLACED WITH THE TERM "RECYCLED".
 - ALL POTABLE WATER PIPING SHALL BE DISINFECTED PER CURRENT CPC.

Detail RW-RNR1

ACCEPTANCE SIGNATURES FOR SBWR PROJECT ID: XXX####P	
RETAILER	DATE
SBWR – SOUTH BAY WATER RECYCLING	DATE