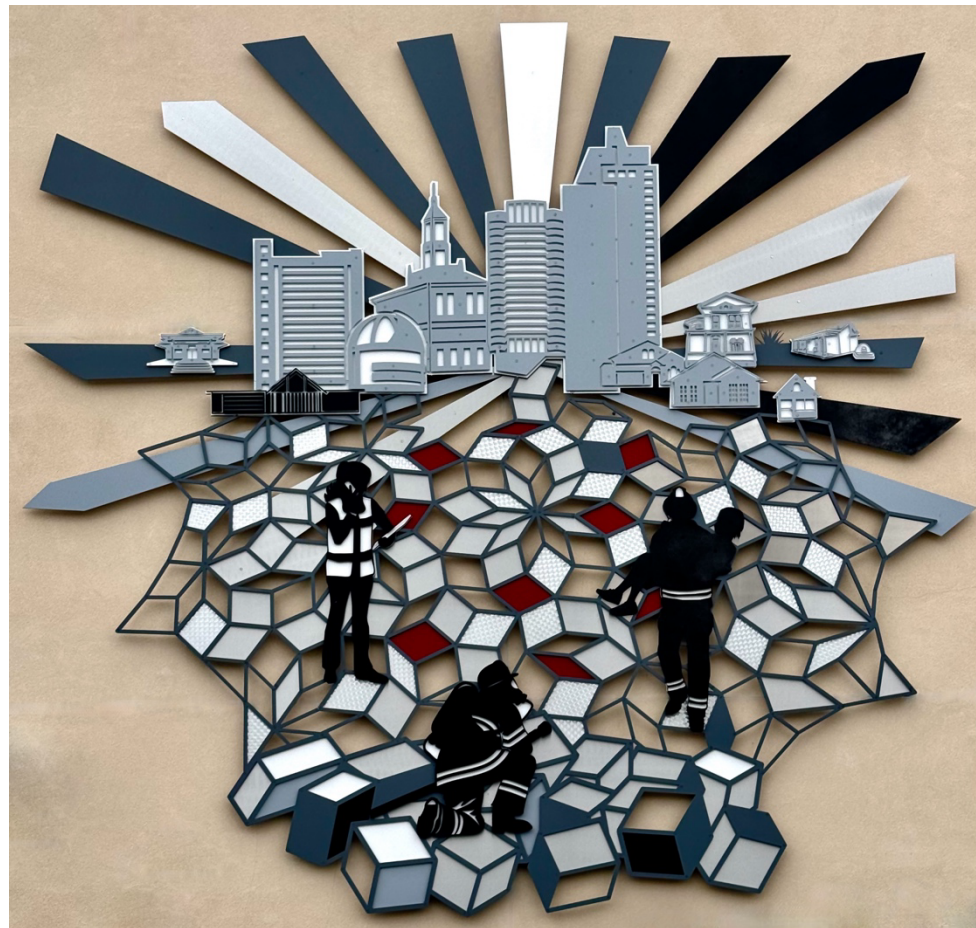


## Project Features

- **Parking facilities:** accommodating up to 300 vehicles, featuring Electric Vehicle charging stations distributed throughout.
- **Power Sources:** Incorporates over 1,300 PV Panels alongside infrastructure for both permanent and portable Battery Energy Storage Systems. Onsite Generator with 72 hours of onsite fuel.
- **Potable Water:** 5,000 gallons of potable water available when external water systems fail or are undrinkable.
- **Power Efficiency and Recovery:** Buildings 1 and 2 are designed for nearly 100% off-grid operation, with immediate power recovery capability for building systems as needed.
- **Automated Systems and Sensors:** Project design addresses COVID-19 challenges with features such as door auto openers at high-density locations, restroom fixtures equipped with automatic sensors, and high efficiency air filtering and air exchange.
- **154-Foot Communication Tower:** Features over 30 antennas and dishes to facilitate communication with various entities locally, statewide, and nationwide.
- **Advanced Audio/Visual Capabilities:** Equipped with state-of-the-art audio-visual infrastructure, including two 128 x 128 port video matrix switches, feeding over 55 monitors spread across both buildings, and Video Walls with remote viewing capabilities supporting up to 200 devices for Department Operations Center and field viewing of EOC activities.
- **Resilient Communications:** Integrates 26 communication methods designed for graceful degradation of service in the event of external communication failures. These include Helicopter Video Downlinks, VOIP and POTS phone lines, Public Safety Radios, redundant fiber connections, a GMRS repeater, Two Compact Rapid Deployables (CRDs), a FirstNet small cell site, extensive Wi-Fi, as well as Amateur Radio Voice and Data communication capabilities supported by the local ARES / RACES / ACS volunteers. Additionally, the volunteer operated Wireless Emergency Network (WEN) has built-in failover to multiple ISPs, high-level Microwave Access points, and a self-contained Voice over IP telephone system providing robust communications operation during local or widespread infrastructure failures.



Project Awarded: January 12, 2021

Funding source: 2018-Measure T, California Budget Request, & proceeds from existing training site property sale

Construction Cost: \$60M (Total \$90M including site acquisition, equipment, and furniture)

### Thank you to:

Residents: The voters of the City of San Jose who authorized Measure T Public Bond

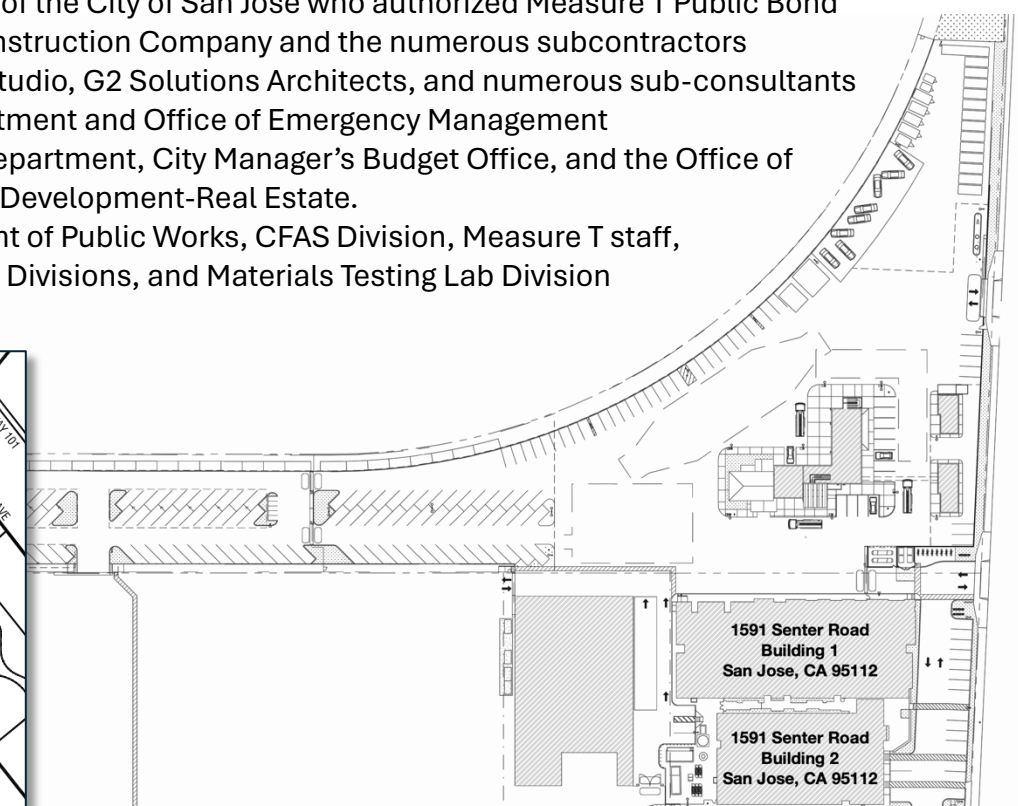
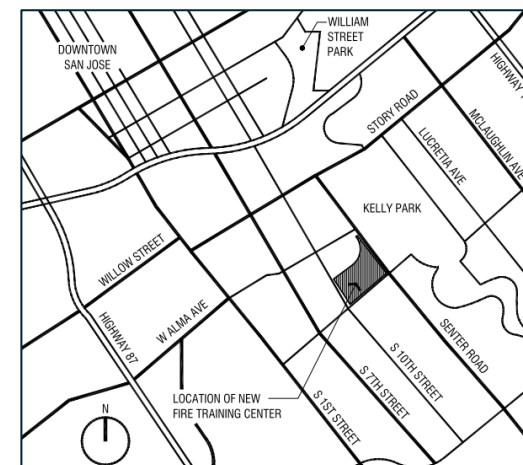
Contractor: Zovich Construction Company and the numerous subcontractors

Architects: Ten Over Studio, G2 Solutions Architects, and numerous sub-consultants

Partner Departments: Fire Department and Office of Emergency Management

Other Departments: Finance Department, City Manager's Budget Office, and the Office of Economic Development-Real Estate.

Project Management & Department of Public Works, CFAS Division, Measure T staff, supporting Divisions: Inspection Divisions, and Materials Testing Lab Division

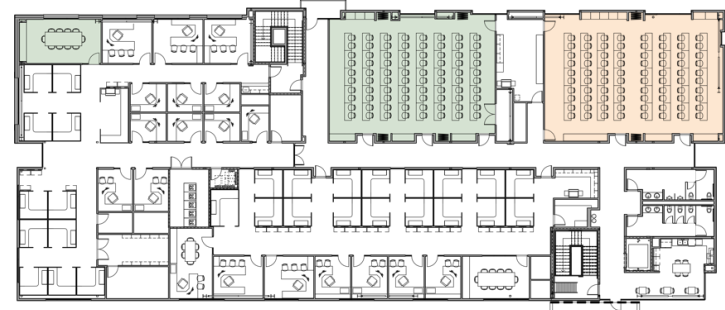


## Building 1 – Fire Training Center, Fire IT, and Office of Emergency Management

First Floor



Second Floor

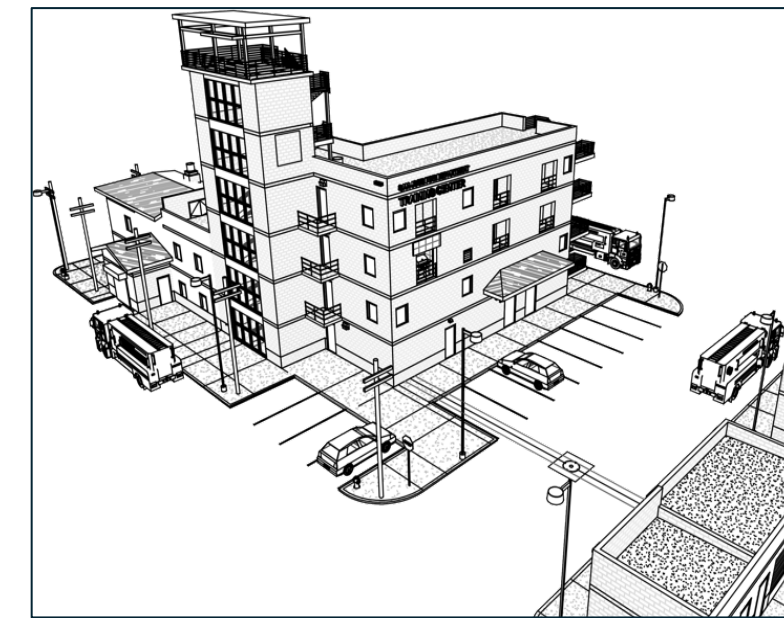
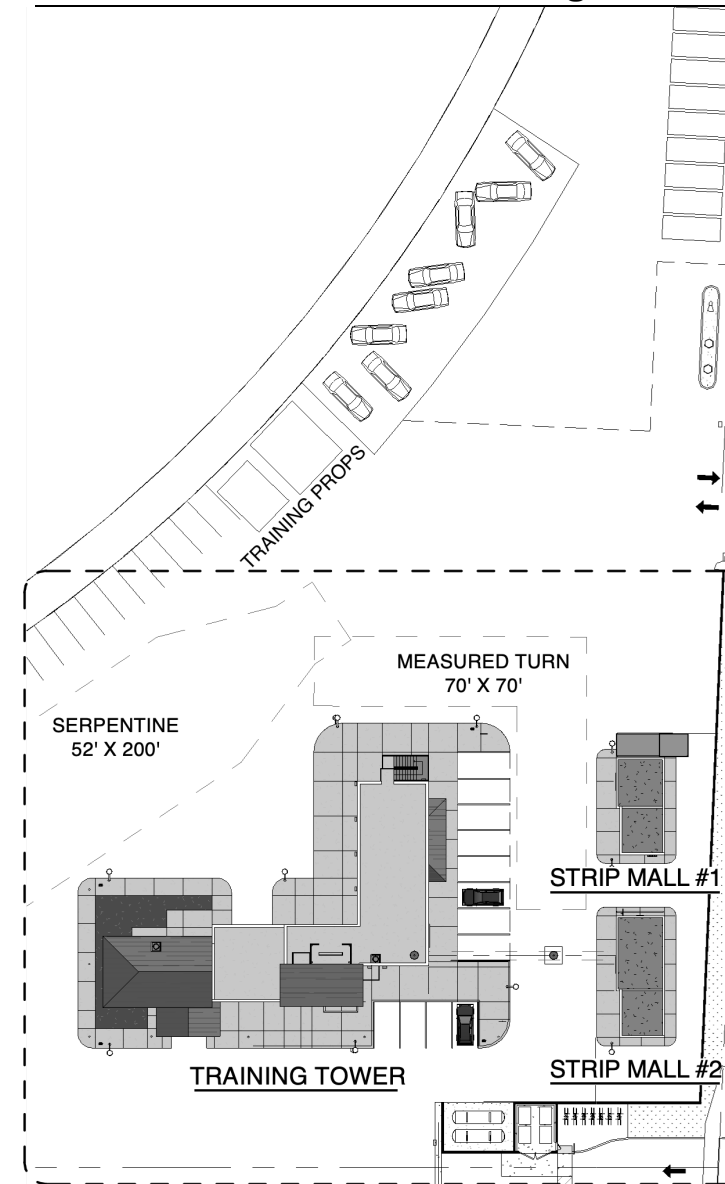


- EOC Activation Support Spaces
- DOC Activation Support Spaces
- Recruit Training Spaces

- Two-story building covering 32,112 sf.
- Equipped with 7 classrooms that can be partitioned for flexible arrangements.
- Houses offices for OEM, Fire Department Training, EMS, and Fire IT.
- Equipped with locker rooms with showers for staff and recruits.
- Serves as an extension of the Emergency Operations Center allowing Department Operation Centers and partners to co-locate when necessary.
- Includes a commercial kitchen complete with a food serving area to support EOC and Fire Academy.

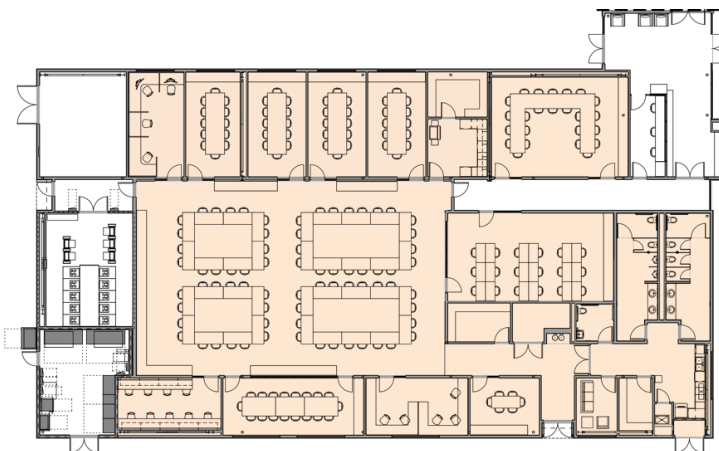


## Fire Training Tower and Auxiliary Training Buildings



- Encompasses 12,460 square feet within a 6-story fire training structure, including a 6-story stair tower, a 4-story apartment tower, and a 2-story residential unit,
- Features a 7-story rappelling deck, a roof training area, and numerous exterior access decks,
- Contains interior rooms specifically designed for firefighting exercises, equipped with fire props, smoke capabilities, and a simulated stuck elevator prop,
- Additionally, includes two single-story strip mall-style training structures measuring 568 sf and 678 sf respectively, and
- Offers a 100-foot underground training tunnel for specialized training scenarios.

## Building 2 – Emergency Operations Center, Executive Briefing Room:



- Single-story building spanning 11,079 sf.
- Constructed to meet 1.5 Seismic Factor and Essential Services Facility code regulations.
- The main room of the Emergency Operations Center accommodates 80 maximum occupants with tables.
- Features breakout rooms dedicated to 6 EOC sections, alongside an executive briefing room, and areas designated for Emergency Public Information Officer and Liaison branches.
- Offers amenities for employee wellness, including a coffee bar and a quiet room.
- Includes specialized spaces such as a satellite 9-1-1 center, Radio Communications room, a Geographic Information System (GIS) / Situation room, and storage for furniture, equipment, and supplies.



Room #	Room Name	Ft <sup>2</sup>	Seats
304	Executive Briefing Rm	622	24
306	PIO / Liaison Room	675	18
307	Copy Room	160	0
308	EOC Library	108	0
309	Breakout Room	252	12
310	Breakout Room	252	12
311	Breakout Room	252	12
312	Breakout Room	252	12
313	911 Comms Room	252	4
316	EOC Main Floor	2714	72
317	Data Center	462	0
319	Radio Room	281	9
320	Management Room	397	18
321	GIS / Situation	282	5
322	Breakout Room	191	8
327	Quiet Room	191	3
<b>Total EOC only</b>		<b>7341</b>	<b>221</b>
<b>Total All EOC and DOC spaces as needed</b>		<b>15318</b>	<b>590</b>

Room #	Room Name	Ft <sup>2</sup>	Seats
110	Expanded EOC Support Room	814	30
139	Call Center	918	39
143	Joint Information Center - Media Center	1632	80
206	Briefing - Operations Support - Billeting	1634	80
<b>Total EOC Support Only</b>		<b>4998</b>	<b>229</b>
111	Department Operations Center (DOC)	1138	50
209	Department Operations Center (DOC)	1568	80
225	DOC Conference Room	273	10
<b>Total DOC Only</b>		<b>2979</b>	<b>140</b>