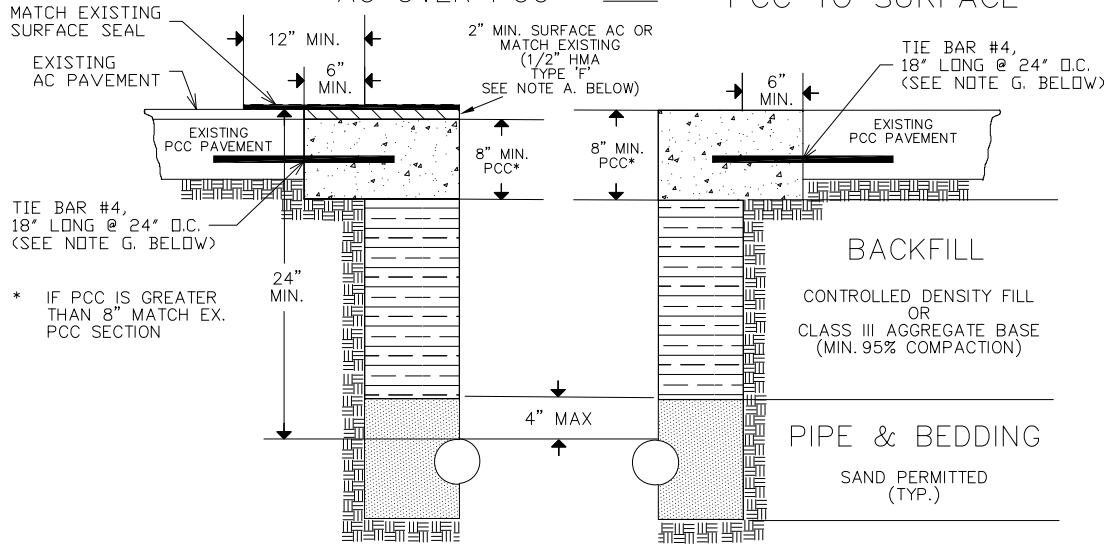


CITY OF SAN JOSE, DEPARTMENT OF PUBLIC WORKS, DEVELOPMENT SERVICES, UTILITIES SECTION
TRENCH BACKFILL & SURFACE RESTORATION METHODS

METHOD D

(SEE NOTES BELOW) **CONDITION #1:** AC OVER PCC **OR** **CONDITION #2:** PCC TO SURFACE

MAJOR/
 ARTERIAL STREETS
 COLLECTOR STREETS

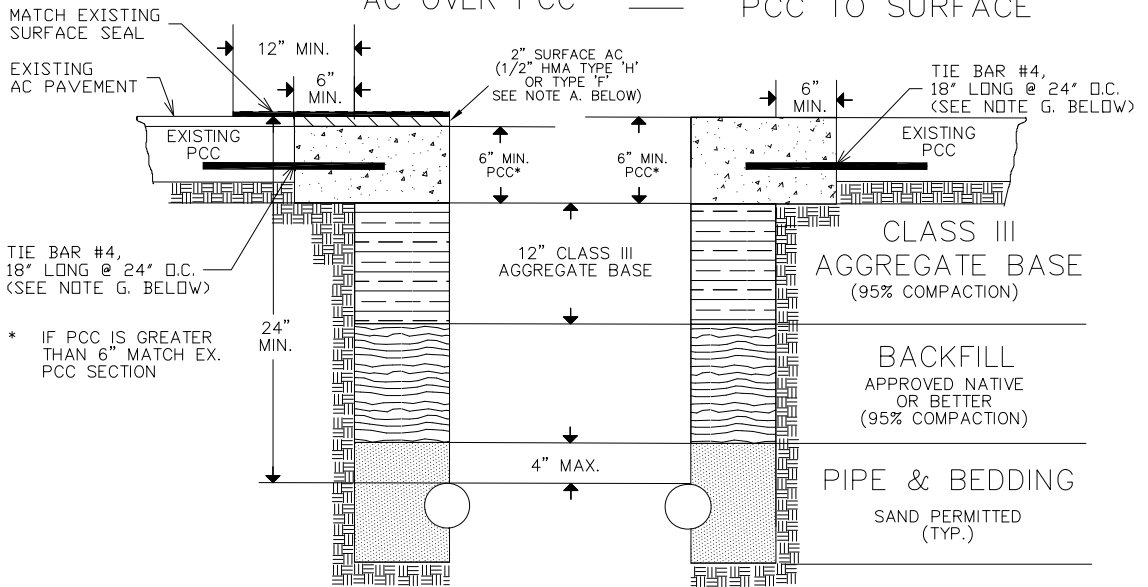


* IF PCC IS GREATER THAN 8" MATCH EX. PCC SECTION

METHOD E

(SEE NOTES BELOW) **CONDITION #1:** AC OVER PCC **OR** **CONDITION #2:** PCC TO SURFACE

MINOR/
 RESIDENTIAL
 STREETS



* IF PCC IS GREATER THAN 6" MATCH EX. PCC SECTION

NOTES:

- A) ALL HMA SHALL BE EITHER TYPE 'F' OR 'H' AT 92-97% COMPACTION AT THE DEPTH INDICATED IN THE DETAIL ABOVE.
- B) SAW CUT FULL DEPTH EX. AC BEFORE EXCAVATION (SEE CONDITION #1 OR CONDITION #2). THE USE OF JACKHAMMERING SHALL CONFORM TO GOVERNMENT CODE 4216.
- C) WHENEVER THE TRENCH EDGE IS WITHIN 12" OF THE LIP OF GUTTER, REMOVE AND REPLACE THE ENTIRE DEPTH OF AC BETWEEN THE TRENCH WALL AND THE LIP OF GUTTER.
- D) WHENEVER THE TRENCH EDGE IS LESS THAN 24" FROM THE LIP OF GUTTER, GRIND A MINIMUM OF 2" DEEP FROM THE LIP OF GUTTER TO 12" BEYOND THE FAR TRENCH.
- E) MATCH EXISTING SURFACE FINISH (CAPE-SEAL, SLURRY-SEAL, ETC.) AFTER PLACING FINAL AC LIFT.
- F) DETAIL IS ALSO APPLICABLE FOR POTHoles, BORE PITS, BELL HOLES, ETC.
- G) USE #4 TIE BAR, DRILL HOLES, BRUSH AND USE A COMPRESSOR TO CLEAN. SET TIE-BARS IN EPOXY. IF TRENCH WIDTH IS LESS THAN TIE BAR LENGTH, USE A MINIMUM LENGTH OF THE TRENCH WIDTH MINUS ONE (1) INCH. THE TIE BAR MUST BE EMBEDDED 9 INCHES INTO THE EXISTING PCC.
- H) PCC DESIGN SHALL BE MINIMUM 650 PSI FLEXURAL STRENGTH AT 28-DAYS AND ACHIEVE MINIMUM 550 PSI WITHIN 5 DAYS AND PRIOR TO LOADING TO TRAFFIC.
- I) PCC MIX SHALL CONFORM TO CLASS D REQUIREMENTS PER CITY STANDARD SPECIFICATIONS.
- J) IN LONG TRENCHES, EXPANSION JOINTS SHALL BE PLACED AT APPROXIMATELY 50-FOOT INTERVALS OR AS SPECIFIED BY THE ENGINEER.
- K) MATCH EXISTING TRANSVERSE JOINTS (1/8" WIDE AT A DEPTH OF T/3, T= NEW CONCRETE THICKNESS).
- L) CONCRETE SHALL BE PROTECTED PRIOR TO OPENING FOR TRAFFIC.