

# HANDOUTS

## Parks and Recreation Commission

Wednesday, May 1, 2024  
5:30pm

Hybrid Meeting

<https://sanjoseca.zoom.us/j/96363023495>

San José City Hall  
Room T-550  
200 E. Santa Clara St.  
San José, CA 95113



---

District 1	Daphna Woolfe
District 2	Andre Morrow
District 3	Lawrence Ames, Vice Chair
District 4	Jo Nguyen
District 5	Daisy Barocio
District 6	Kelly Snider, Chair
District 7	Giavanna Vega
District 8	Kent Campbell
District 9	Janny Choy
District 10	Ken Brennan
Citywide	Jose Villarreal

Councilmember Dev Davis, Council  
Liaison

Jon Cicirelli, Director, PRNS

May 1, 2024 – Parks and Recreation Commission Meeting

SAN JOSE  
**PARKS, RECREATION &  
NEIGHBORHOOD SERVICES**



# PRNS Urban Forestry Program



Kallie Schloemann – Assistant Arborist  
Veronica Schulte – Parks Manager







# Assistant Arborist



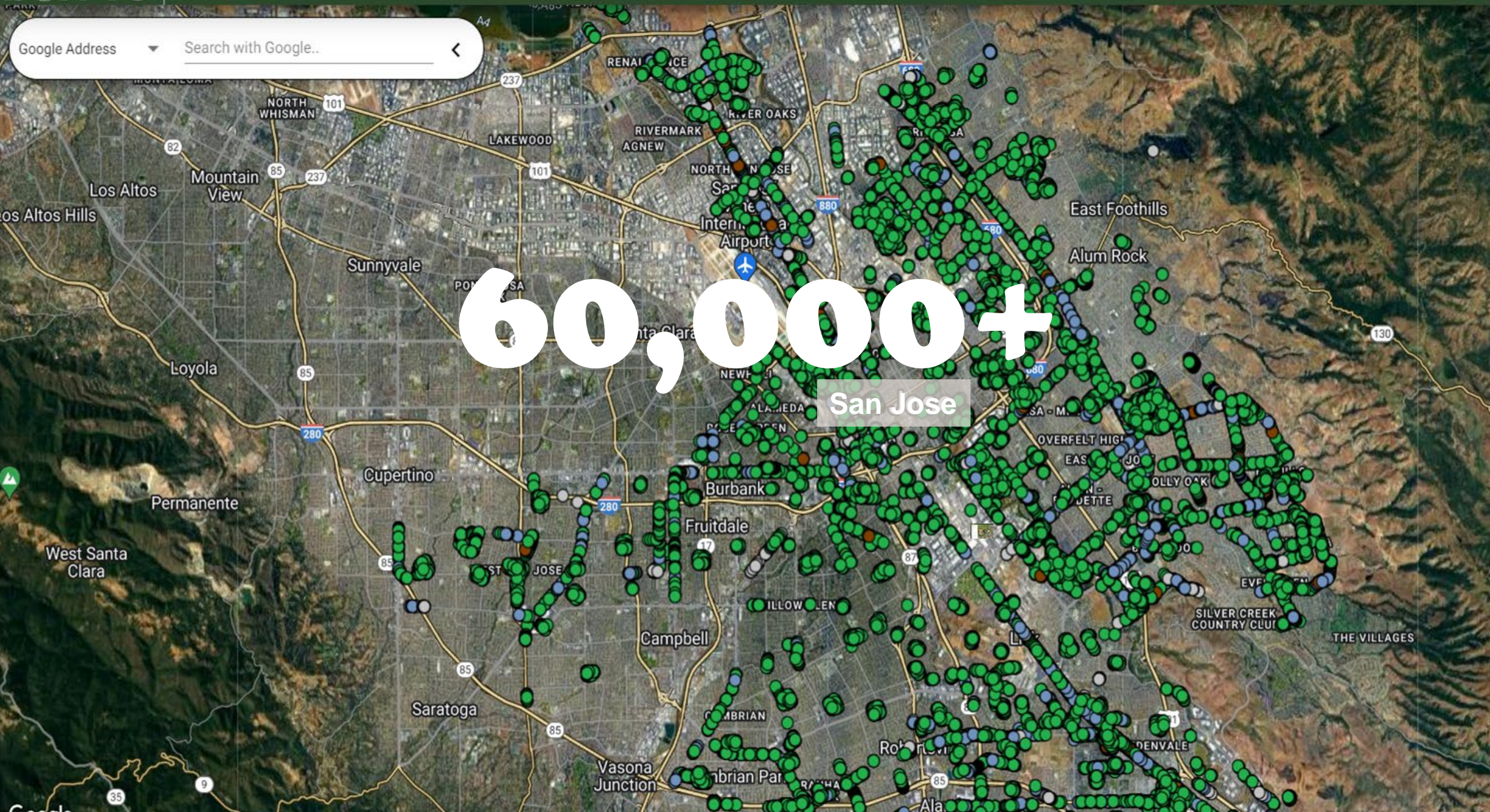
- Risk assessment, diagnosis
- Tree care maintenance plan development
- Curate PRNS planting palette including native species
- Tree emergency response
- Tree inventory management
- Coordination with tree partners
- New Parks facilities consulting and recommendations
- Tree contract management
- Tree budget
- Trainings
- Outreach, Grants
- Planting event planning and coordination



Google Address Search with Google..

60,000+

San Jose





Google Address

Los Altos Hills  
Los Altos  
West Santa Clara  
Perma

82  
35

Google

### Details

ID: 26016

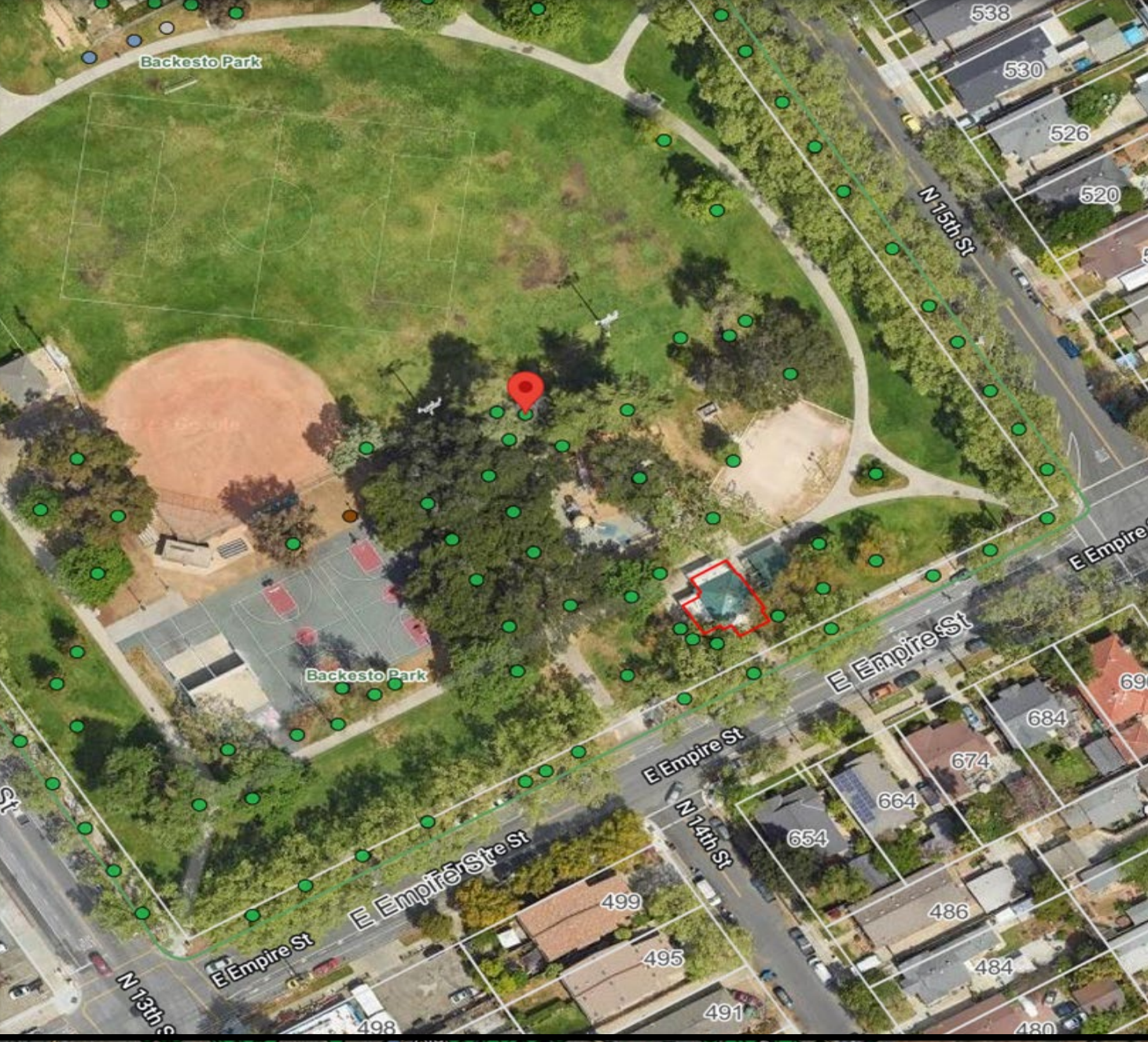
Save Toggle Street View Details Report More Options

Tree Work

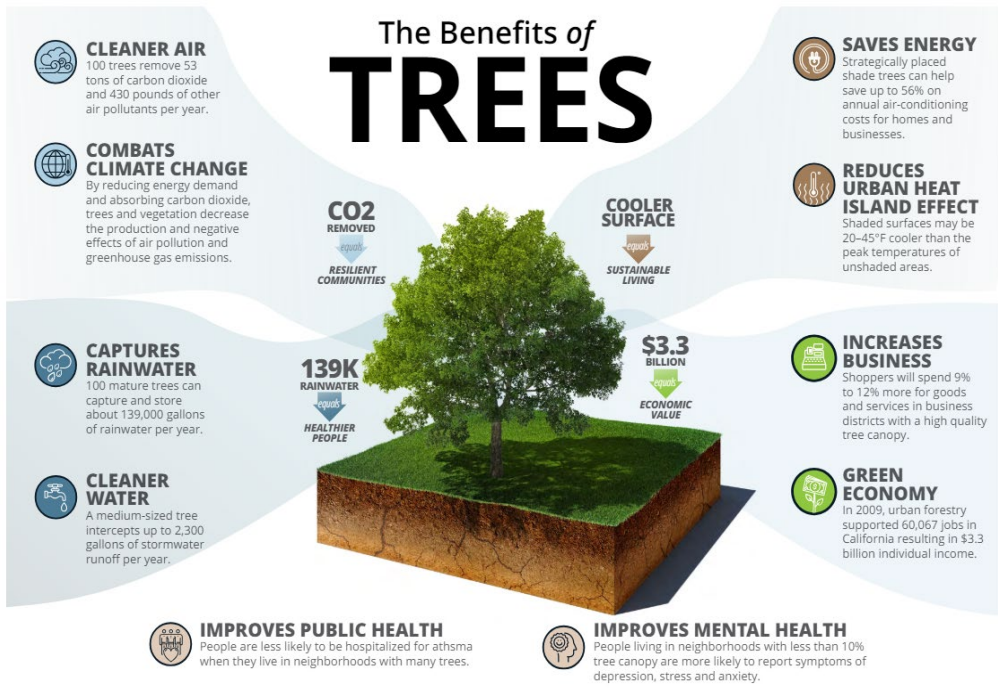
#### Location

Location: Backesto Park  
Location Type: Park  
District: 5

Property Street: N 13th St Property Address #: 551  
On Street: None  
Side: Park Fictitious?: Yes  
Growspace Type: L Landscape/Turf Areas Growspace Size: 99  
Utility Presence: No  
Target: Playground Occupancy Rate: Occasional







*"The City tree inventory was analyzed against sustainability metrics to determine the condition of trees and understand what management practices will need to be improved to have the most meaningful impact on tree health and safety."*

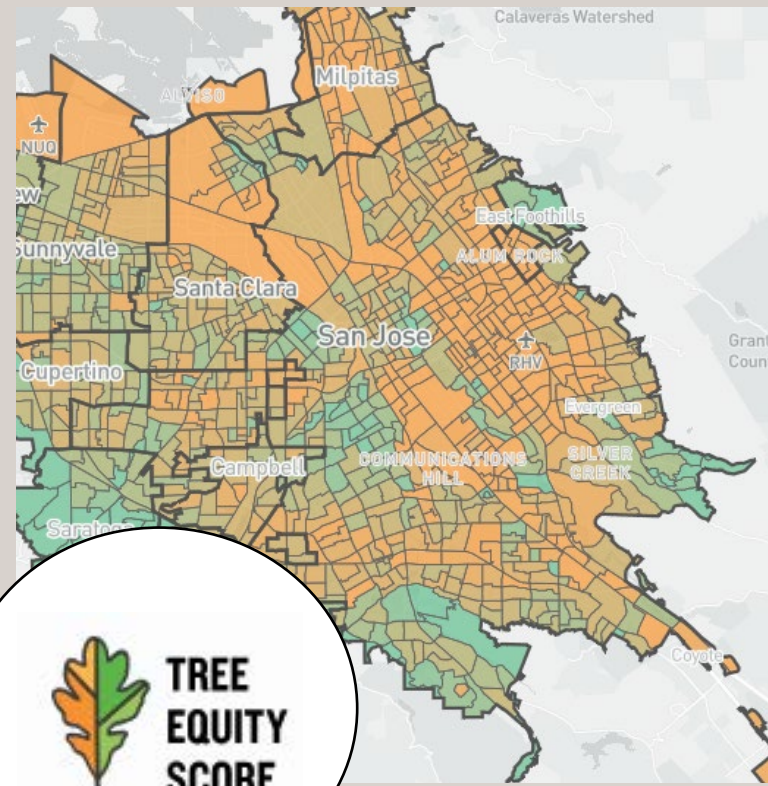
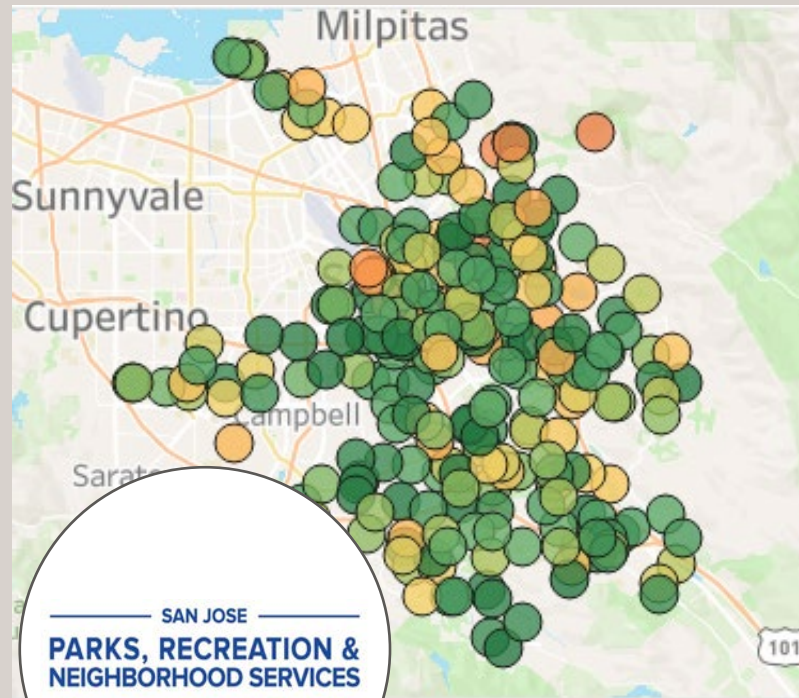
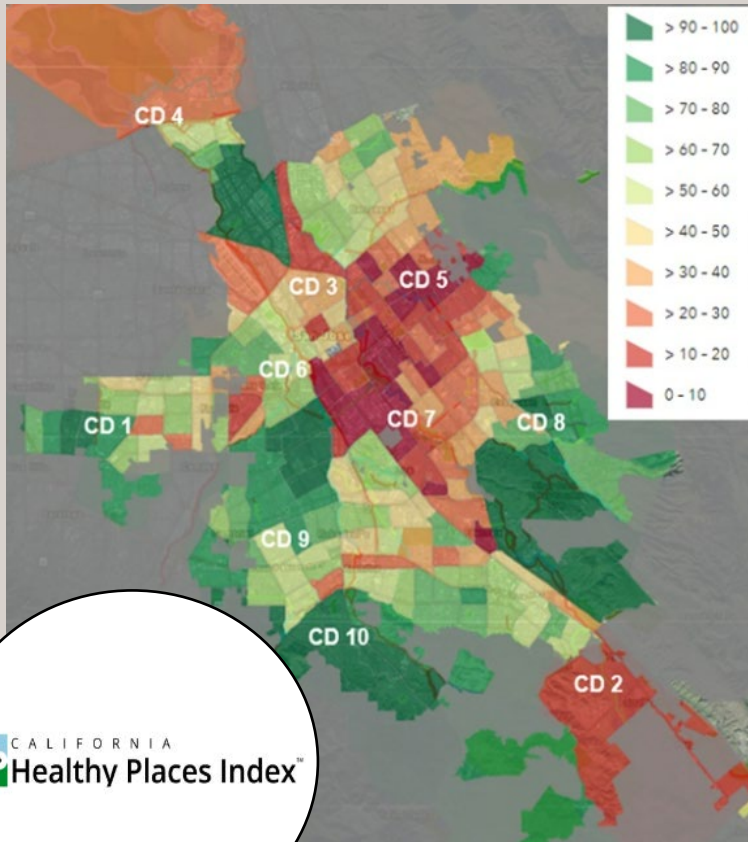
Guiding Principles	Goal
Equity, diversity, and inclusion	The values of the community are reflected in City policies and management practices which annually receive the necessary resources for successful implementation.
Innovation	Emerging technology and current research inform the development of City standards that lead to a sustainable Community Forest.
Regional Identity	The City will maintain the unique sense of place and neighborhood character that comprises the identity of San José as it develops the urban landscape.
Resilient San José	The City will protect communities from the adverse impacts of climate change by maximizing the environmental, economic, social and health benefits of the Community Forest.

# Community Forest Management Plan

City of San José



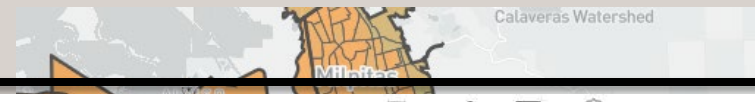
# Prioritization Tools





# Prioritization Tools

PRNS PCA by [Claire Cioni](#)



## PRNS Parks Condition Assessment

- Overall
- Healthy Places Index
- Categories
- Scores by Park
- Pass Fail and Comments

### Trees Scores

Slide to filter by score



Park Name	Year	Score
Canyon Creek Park	2023	1.00
	2022	1.00
Capitol Park	2023	0.67
	2022	0.50
Carolyn Norris Park	2023	0.83
	2022	0.83
Carrabelle Park	2023	1.00
	2022	0.83
Cataldi Park	2023	1.00
	2022	0.83
Cathedral Oaks Park	2023	1.00
	2022	1.00

Select a new Category below

Trees

Year

(Multiple values)

Park Name

(All)

PD

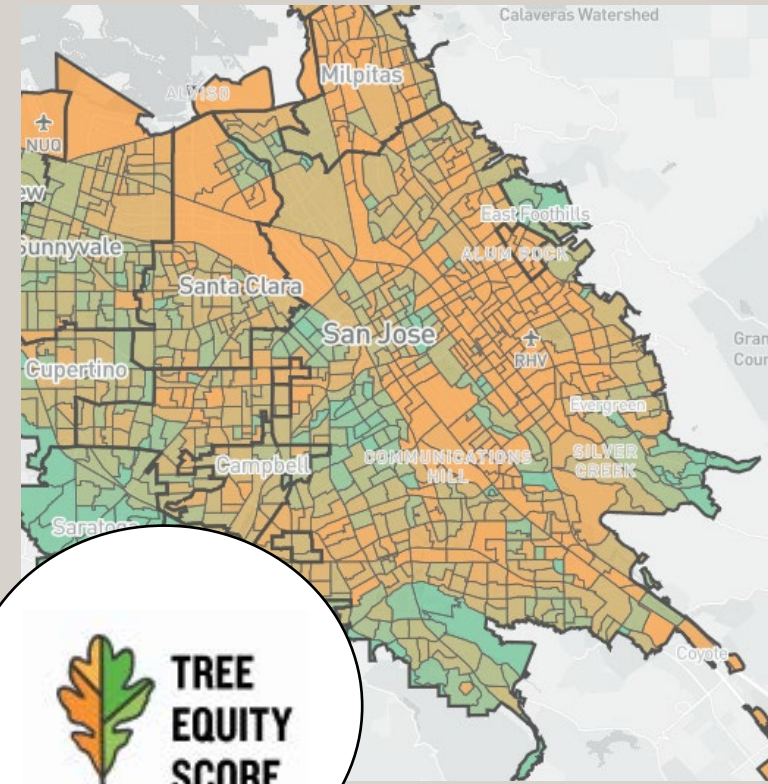
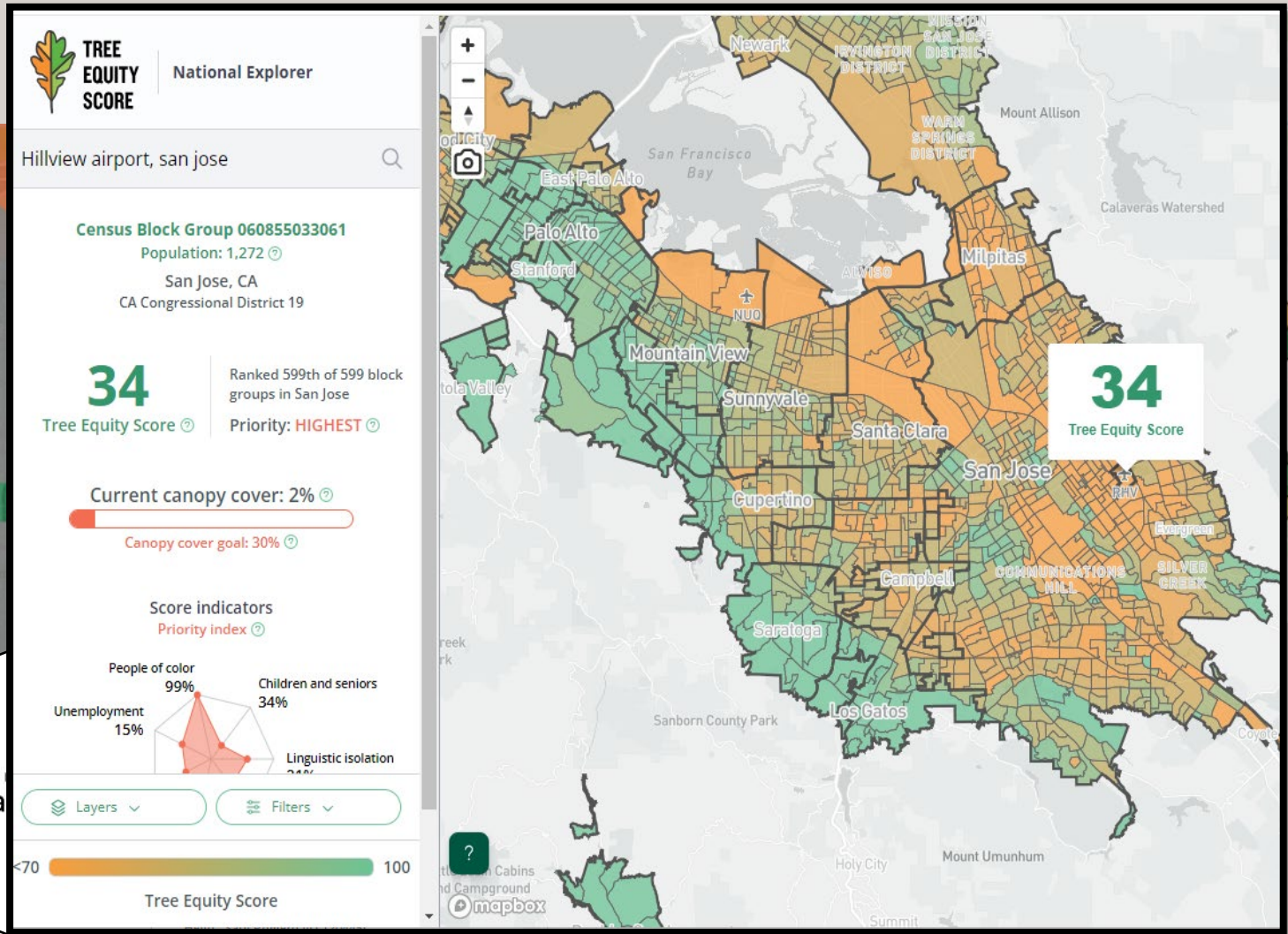
(All)

CD

(All)



# Prioritization Tools







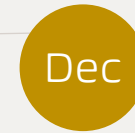
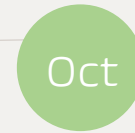
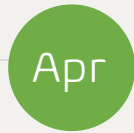
# Tree Program Timeline

Q3

Q4

Q1

Q2



## START TREE PLANTING SEASON

Tree plantings are scheduled throughout late January through the end of May or very early June.



## TREE/RISK INSPECTIONS

Inventory management, and responses to Park Concerns and Parks Division workplans occurs year-round.

## TREE PLANTING WINDOW

Plantings can occur during a brief window in fall to early winter, depending on temperature and weather conditions..



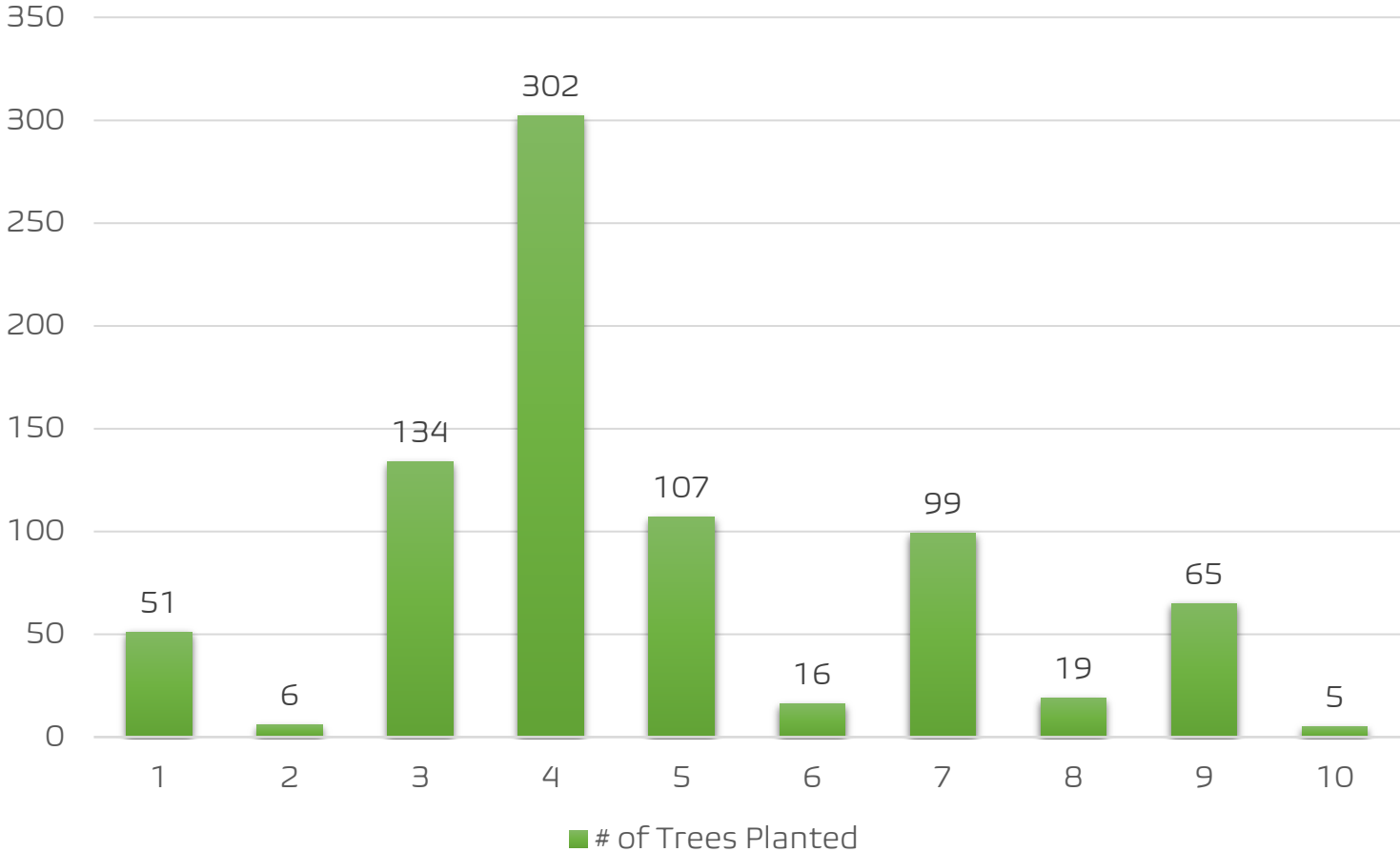
## START STORM SEASON

Emergency response peaks November through March



# 804 TOTAL PARK TREES

as of April 26, 2024 # of Trees Planted



Trees  
Planted by  
Council  
District  
FY 23-24





# PRNS Urban Forestry Challenges



- Capacity
- Aging irrigation infrastructure
- Bio-diversity
- Climate change
- Department specific policy
- ISHB



# Invasive Shot Hole Borer



*Euwallacea  
kuroshia*

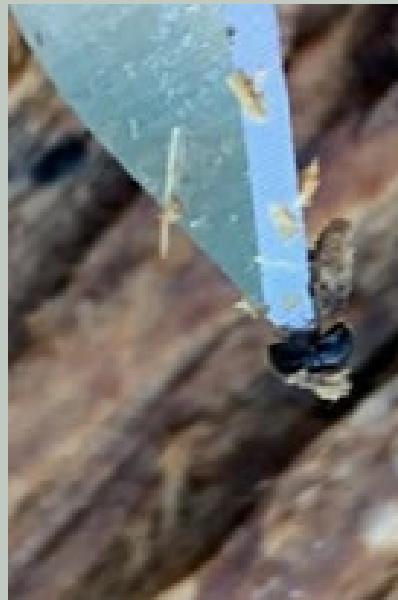
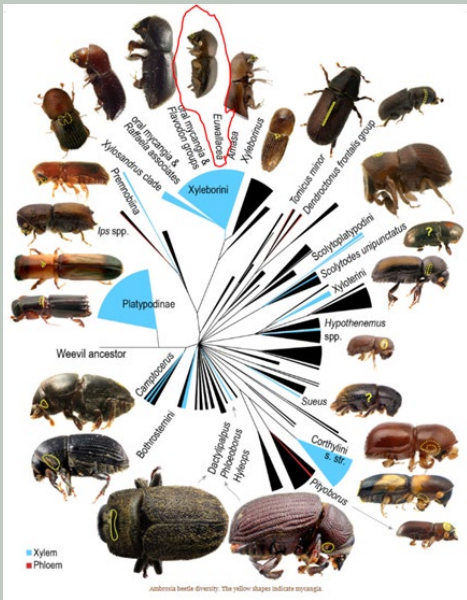
Infestation  
identification

Reproductive  
host species

Rapid Tree  
Mortality

Fusarium  
Dieback

Trapping &  
Monitoring





# READY TO GROW

## People & Partnerships

- Arborist Classification Study
- Building the arborist team
- Training specialized Tree Maintenance Teams
- Volunteers & CBOs

## Inventory Management

- Complete ArborPro Inventory
- Tree plantings
- New Parks
- Long-term maintenance plans
- ISHB mitigation

## Program Development

- Policy updates
- Species guides
- Arboriculture principles and practice
- Innovative technology
- Grants & resources





SAN JOSE  
PARKS, RECREATION &  
NEIGHBORHOOD SERVICES



CITY OF  
SAN JOSE  
CAPITAL OF SILICON VALLEY



[parks.trees@sanjoseca.gov](mailto:parks.trees@sanjoseca.gov)

# Questions?





May 1, 2024 – Parks and Recreation Commission Meeting

SAN JOSE  
**PARKS, RECREATION &  
NEIGHBORHOOD SERVICES**



# PRNS Urban Forestry Program



Kallie Schloemann – Assistant Arborist  
Veronica Schulte – Parks Manager

