



Presentation by:

Teresa Smith, PhD, CEO & Founder

## Mission

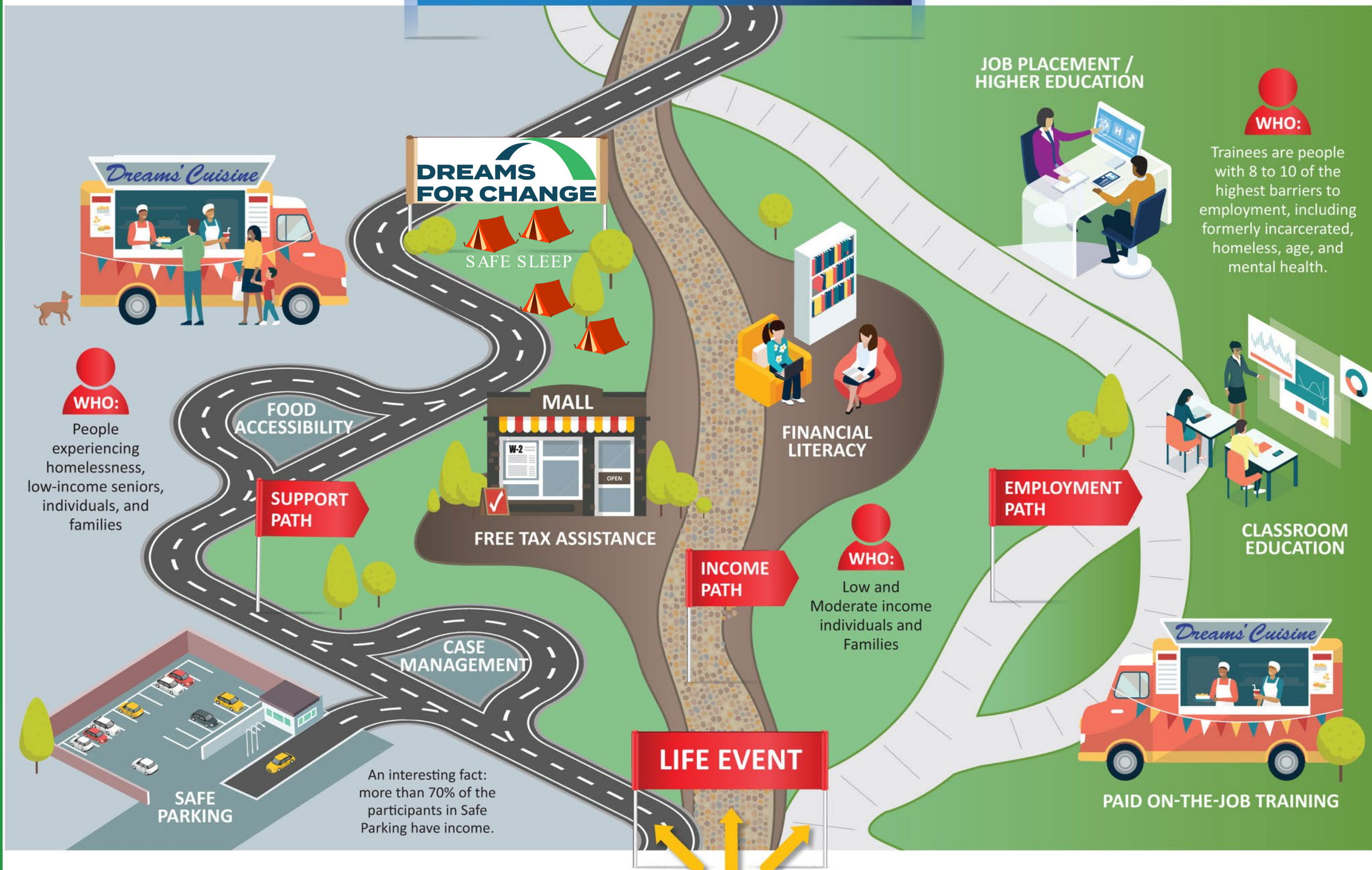
The mission of Dreams for Change remains its guiding beacon: To respond to the needs of communities by creating innovative and cost-effective programs to empower and stabilize the lives of families and individuals.

## History

Dreams for Change was founded in May 2009 by Dr. Teresa Smith to serve the needs of families and individuals who were struggling due to the recession's economic downturn. Since then, it has pioneered multiple cost-effective interventions that stabilize the lives of thousands of individuals experiencing homelessness and other low-income people.



# FINANCIAL AND HOUSING STABILITY



## Programs

- Safe Parking
- Safe Sleep
- Workforce Training
- Asset Building

## Services

- Case Management
- Housing Navigation
- Free Tax Prep
- VITA Volunteer
- Financial Literacy
- Food Truck
- Food Distribution
- Job Placement



# Safe Sleeping

The Safe Sleeping program is a City of San Diego-funded initiative that provides a non-traditional congregate shelter space. The program provides tents, cots, and sleeping bags for unsheltered adults who were living in encampments, city streets, parks, and canyons.







# 20th and B St.

Opened on July 28, 2023

## Implementation

- Determining staffing structure to support
- Site setup -similar layout to Hep A camp response
- City developed initial layout with adjustments made on the need
- Planned steady intake gear up with intakes



# O Lot

Opened on October 21, 2023

## Implementation

- Different layout and determining how to best utilized the space
- Opportunity for creating space for client special needs
- Vendors coordination
- Subcontractors
- Setup







# Amenities

## B Site

- Porta potties
- Handwashing Stations
- Showers days
- Storage bin
- Coffee
- Microwave
- Pet Supplies
- Charging Stations
- Lending Library
- Shuttle Service

## O Site

- Porta potties
- Handwashing Stations
- Showers
- Laundry
- Locker storage
- Coffee
- Microwave
- Pet Supplies
- Charging Stations
- Shuttle Service





# Access

- City outreach team partnership
- SD PD HOT
- 211

# Intake

- Application, program expectations, consents
- Issue of cot, sleeping bag, hygiene kits
- Assignment of tent space and tent
  - Based on client's preference
  - Intake community
  - Open Space
  - Needed support



# Service Coordination

- Encampments group intakes
- On site partners
- Off site partners; Shariah Closet
- Case management
- Peer Support
- Volunteers

Direct program services include case management, health services, meals, harm reduction, crisis intervention and recreational activities.





# Challenges

- Drugs
- DV
- Weather
- Rapid intakes
- Supply chain -vendors
- Health concerns
- Media







# Successes

- Building communities
- Increases in feelings of dignity and respect
- Outreach worker connections
- Higher engagement into services
- Housing