



# Bridge Housing Community A Community Meeting

MONDAY, FEBRUARY 26, 2018; 6:00PM-7:30PM

# Welcome

CM Raul  
Perez

Mayor  
Liccardo

Housing  
Department

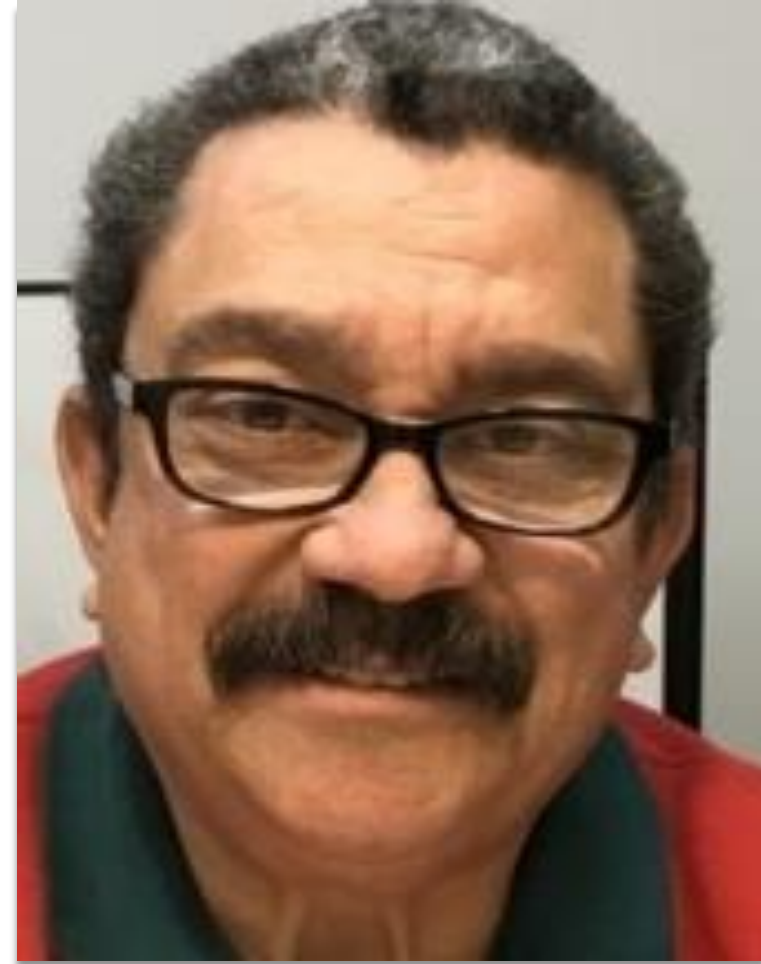
# Meeting Agenda

- ▶ Bridge Housing Communities- Overview and Updates
- ▶ Questions and Answers
- ▶ Next Steps- Continuing the Conversation

# Guidelines for Conversation

- ▶ Use Common Courtesy
- ▶ Think of what you need to know
- ▶ Keep it safe – no disruptions

# David's Story





# Housing and Homeless Crisis In San José

# Homelessness In San José

TOTAL NUMBER OF HOMELESS INDIVIDUALS ENUMERATED DURING THE POINT-IN-TIME HOMELESS CENSUS

Total Homeless Population: 4,350



*Applied Survey Research. (2017). San José Homeless Census.  
Source: Applied Survey Research. (2004-2017). San José Homeless Census.*



# 2016 HUD Annual Homeless Assessment Report

EXHIBIT 1.8: States with the Highest and Lowest Rates of Unsheltered Homeless People 2016

## Highest Rates

### CALIFORNIA

66.4%

118,142 Homeless  
78,390 Unsheltered

### OREGON

60.5%

13,238 Homeless  
8,002 Unsheltered

### HAWAII

54.4%

7,921 Homeless  
4,308 Unsheltered

### NEVADA

53.1%

7,398 Homeless  
3,927 Unsheltered

### MISSISSIPPI

48.9%

1,738 Homeless  
849 Unsheltered

## Lowest Rates

### RHODE ISLAND

3.2%

1,160 Homeless  
37 Unsheltered

### NEBRASKA

3.7%

2,754 Homeless  
101 Unsheltered

### DISTRICT OF COLUMBIA

3.8%

8,350 Homeless  
318 Unsheltered

### MASSACHUSETTS

3.9%

19,608 Homeless  
760 Unsheltered

### NEW YORK

4.2%

86,352 Homeless  
3,591 Unsheltered



Three key factors:

1. **loss** of affordable housing funding...
2. wages and public assistance that have not kept pace with **the cost of living**...
3. and the **closing of state psychiatric institutions** without the concomitant creation of community based housing and services."

*Federal Strategic Plan to End Homelessness - 2010*

## Root Causes of Homelessness

# Cause of Homelessness

## Primary Event or Condition That Led to Homelessness

(Top 6 Responses)



**33%**  
Job loss

**23%**  
Alcohol/drug  
abuse

**20%**  
Eviction

**16%**  
Argument with a  
family member

**13%**  
Divorce/separation/  
break-up

**6%**  
Incarceration

## Interest in Permanent Housing

**91%**

of survey respondents said YES when asked if they would accept affordable permanent housing if it became available tomorrow.



## Obstacles to Permanent Housing

(Top 4 Responses)



**67%**  
Cannot afford rent

**60%**  
Unemployed/  
underemployed

**19%**  
Bad credit

**17%**  
No money  
for moving costs



Homelessness is  
**prevented** or is a  
**rare, brief,**  
and **non-recurring**  
experience

Ending  
Homelessness  
Means

# Why Should We Take Action?

- ▶ It's the right thing to do!
- ▶ Improve our quality of life, our neighborhoods, our businesses, and our environment
  - ▣ 16% of the calls from D7
- ▶ Save tax payer money – police, fire, outreach workers abatement, emergency response, and urgent and emergency room care
- ▶ Saving lives



# Permanent: Supportive Housing





Temporary:  
Shelter

# What is Bridge Housing



**Cornerstone Village –  
Lake County, CA**

**Plaza Hotel**



**Opportunity Village – Eugene OR**

# Assembly Bill 2176

City owned or leased property

Suspends most local and state regulatory requirements

Provide minimum outline for building requirements

Requires Housing Plan



# San José's Vision for Bridge Housing



# San José's Vision for Bridge Housing

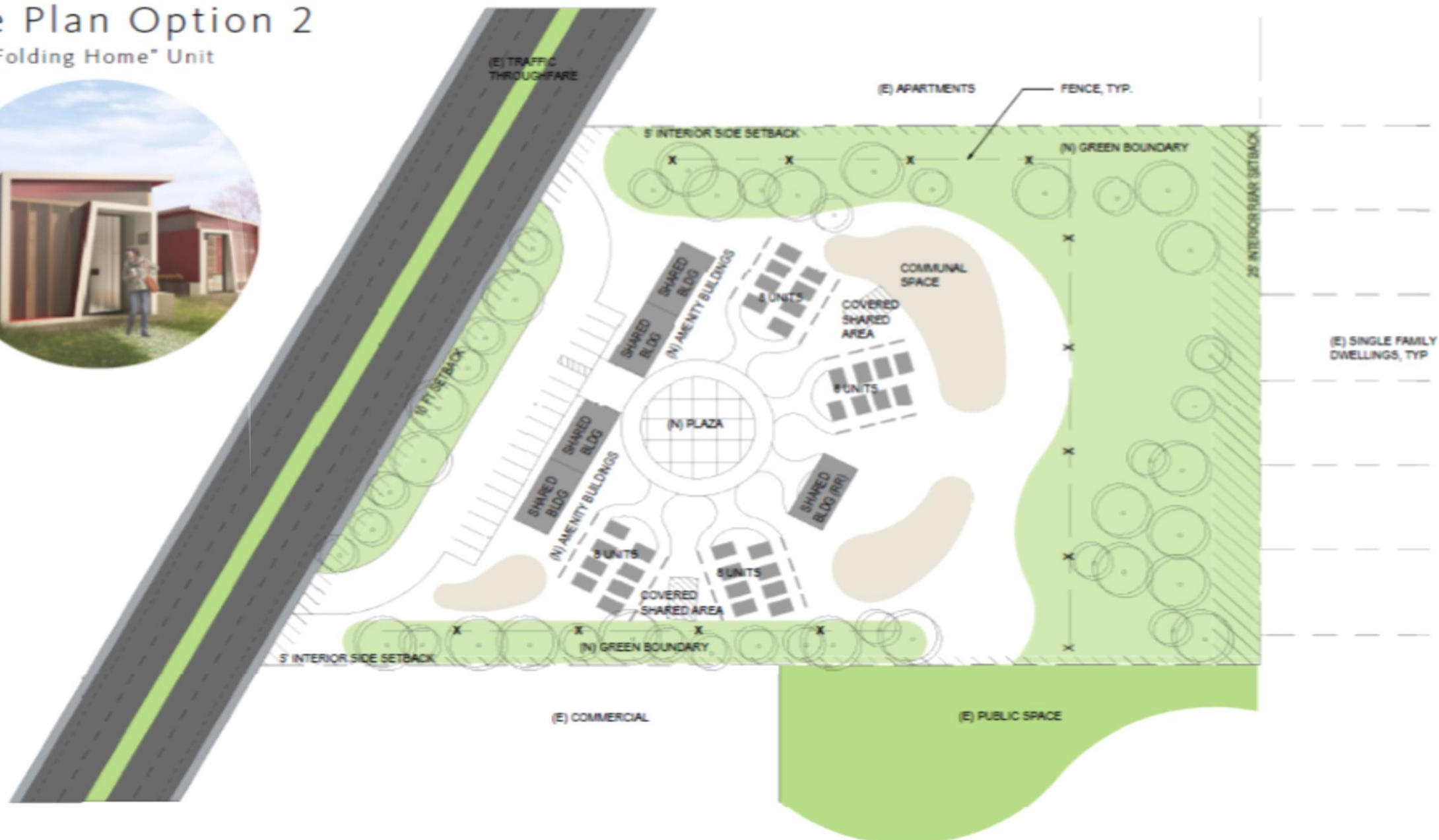


Gensler | Bridge Housing Communities



# Site Plan Option 2

with "Folding Home" Unit



# Homelessness In San José

TOTAL NUMBER OF HOMELESS INDIVIDUALS ENUMERATED DURING THE POINT-IN-TIME HOMELESS CENSUS

Total Homeless Population: 4,350



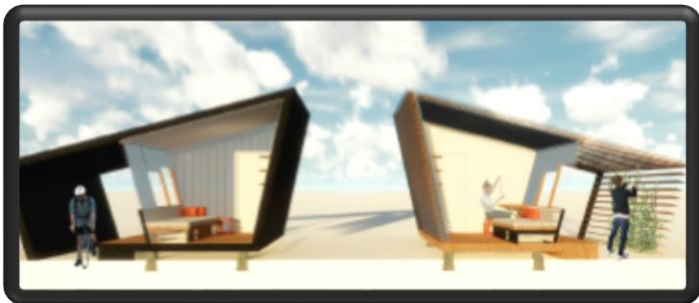
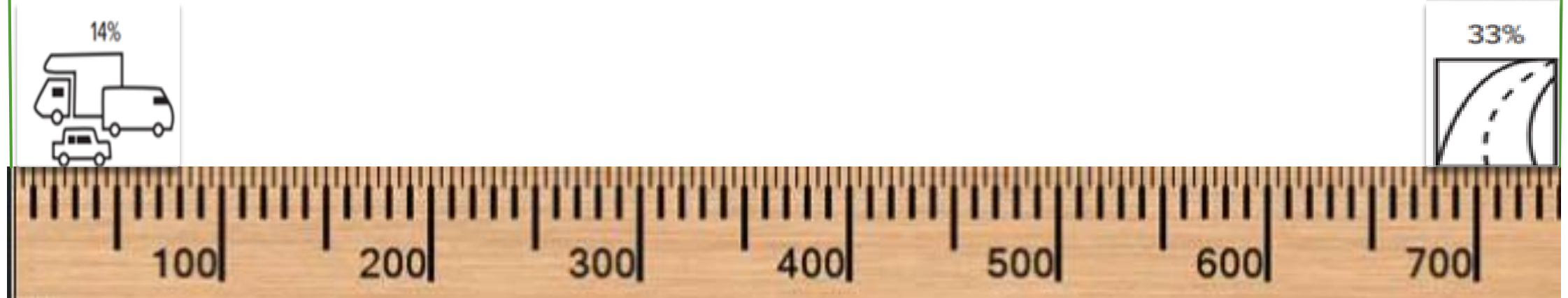
*Applied Survey Research. (2017). San José Homeless Census.  
Source: Applied Survey Research. (2004-2017). San José Homeless Census.*



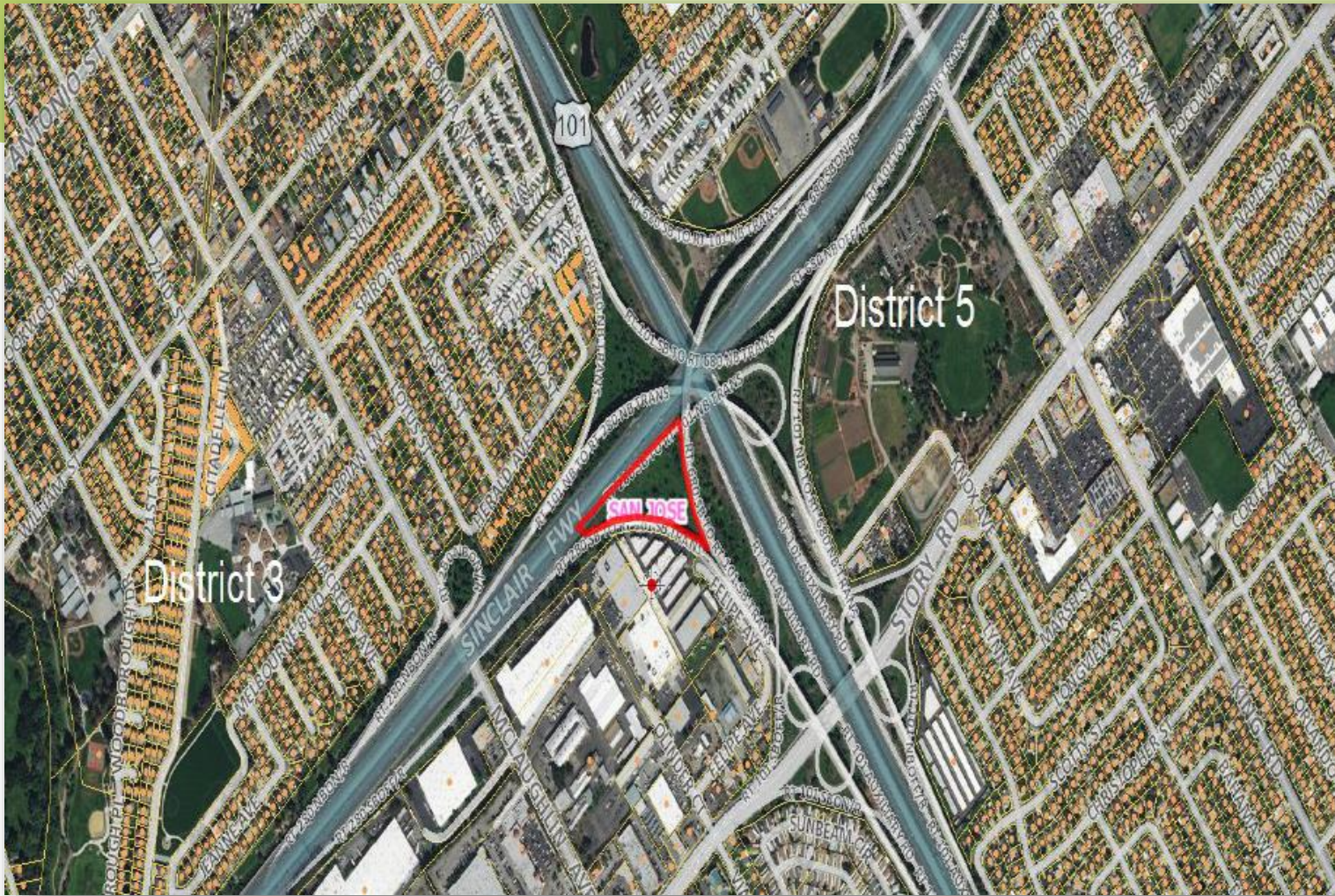
# Who will be housed in BHC

## Non-Chronic

## Chronic

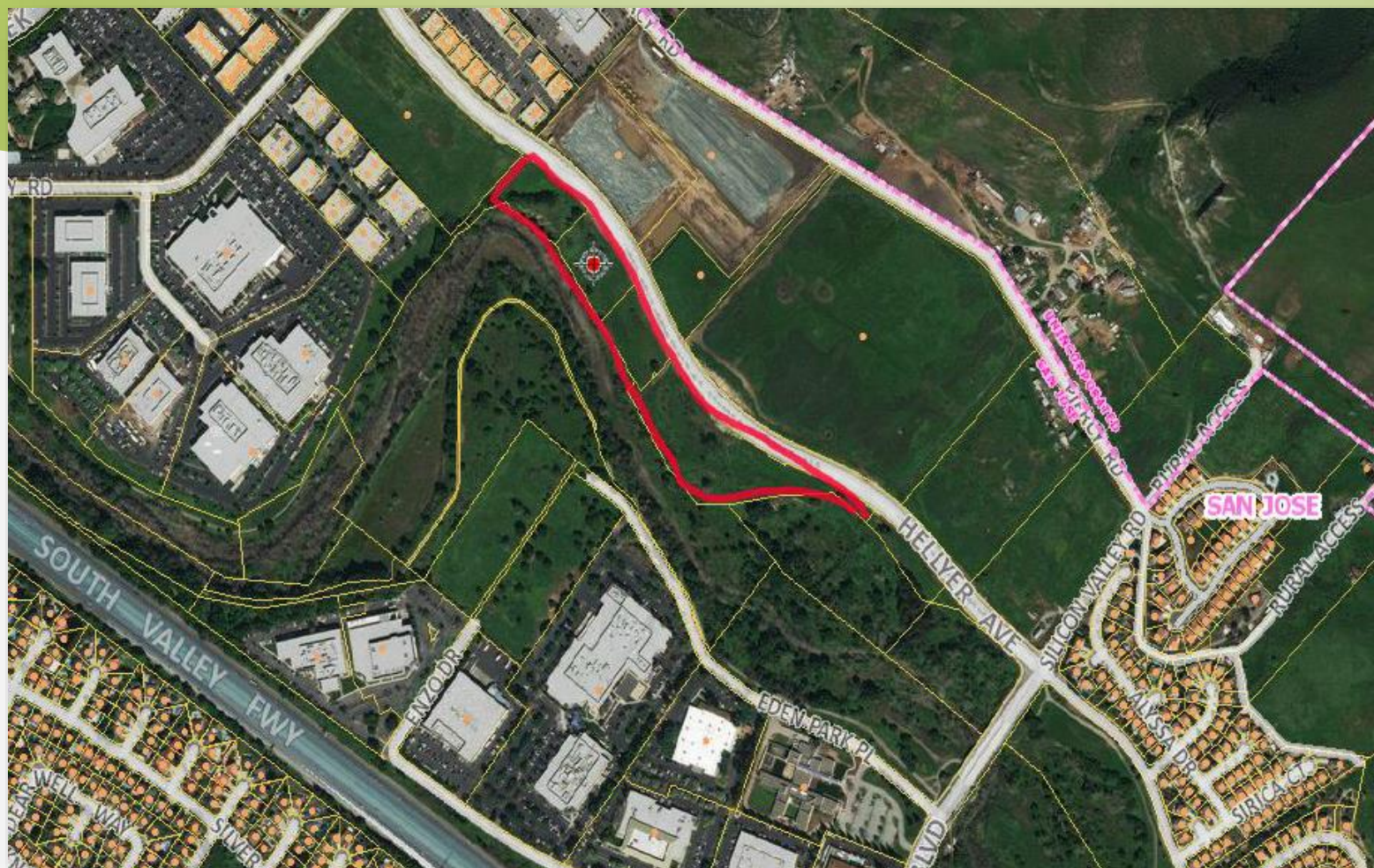






# Candidate Site – D7





Candidate  
Site – D2





Candidate  
Site – D3



# Site Selection

## Site identification

- City Owned or leased
- Access to transit or *transportation commitments*
- Ready access to utilities
- Vacant or minimally developed

## Prioritization

- Proximity to Schools and Neighborhood Residential Homes
- Site Readiness
- Environmental Constraints
- Access to Services and Necessities





# 1986:

Habitat for Humanity East Bay/Silicon Valley was founded as an independent affiliate of Habitat for Humanity International.



## GENERAL CONTRACTING

We're aiding in the efforts of our strategic partners to provide shelter or keep families in their homes, while addressing urban blight. By working with volunteers in more communities, we provide an additional revenue stream to fund our own programs and services.







# ESC CONSTRUCTION

With our skilled construction staff and the help of volunteers, each emergency sleeping cabin built means a safer, healthier place for residents to live, a beautified community, and a proud resident with the ability to improve & enjoy their life.



## COMMUNITY SUPPORT

Individuals, corporations, faith congregations, and community organizations come together to support and fund our work in the community.



# Who is HomeFirst

- Largest provider of shelter services in Santa Clara County
- Providing shelter and services in Santa Clara County for over 35 years
  - ❑ Formerly known as EHC LifeBuilders
- Served 4,035 homeless individuals in the past year
- Seven locations provide
  - ❑ Emergency Shelter Services
  - ❑ Supportive Services (including outreach and case management)
  - ❑ Transitional and permanent housing
  - ❑ Services to Veterans and Veterans with Families

# What is HomeFirst Role in this Project

- Manage the site, operations, and coordinate services for BHC residents
- Stakeholder Coordination
- Coordinate Community Advisory Meetings

# BHC Vision

1

Staffing

2

Operations

3

Programs

4

Services

5

Community  
Asset



# Share your thoughts

Please share one thing you learned from today's presentation and a question you may still have.

# Questions and Comments- Panel Discussion

- Jacky Morales-Ferrand
- James Stagi
- Kevin Elliot – Habitat for Humanity
- Andrea Urton - HomeFirst

# Next Steps- Continuing the Conversation

- Environmental Review – Approximately 20 weeks
- Neighborhood Outreach
  - ❑ February 22 – D7
  - ❑ February 26 – D3
  - ❑ March 1 – D2
- Return to City Council – Summer 2018

# Bridge Housing Communities Contacts

- ▶ Visit our website at <http://www.sanjose.gov/bridgehousingcommunities>