

Best Management Practices (BMPs) for Mobile Businesses

*Never let wash water flow into streets,
gutters, parking lots, or storm drains.*



Environmental Services



Delivering world class utility services and programs
to improve our health, environment, and economy.

Who needs this information?

- Automobile Washers and Detailers
- Carpet Cleaners
- Pet Care Services
- Power Washers
- Steam Cleaners
- Other water-using mobile businesses



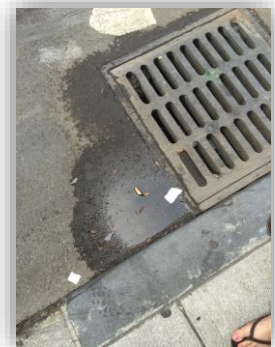


How do you use this information?

- View or download this presentation onto your computer, phone, or tablet.
- Print and keep a copy in your car(s).
- Give a copy to your employees and review it during employee training sessions.

What's the problem?

- Wash water from mobile washing activities may have soaps, metals, oil, grease and other toxic chemicals.
- These pollutants can flow into the street and down storm drains, which flow directly to creeks and the San Francisco Bay, without being cleaned.



What's the problem?

- Pollutants can be very harmful to plants and animals living in and around our creeks and Bay.





Why are Best Management Practices (BMPs) important?

- Federal, state, and local regulations only allow rain water into storm drains.
- Using the proper BMPs is easy, and it is required by state and local stormwater pollution prevention regulations.



The following slides provide
Best Management Practices (BMPs)
for protecting storm drains during activities
that involve wash water and runoff to street
gutters.

Best Management Practices

- Purchase these materials from a hardware or construction supply store:
 - Sand bags
 - Berms
 - Wattles
 - Storm drain covers (mats)
 - Sump pumps
 - Wet/dry vacuums



Best Management Practices

- **Find storm drains** in your work area and determine where the wash water will go.
- Wash water can usually be discharged into the sewer through a connection on the property. You can use a utility sink, floor drain, mop sink, toilet or cleanout.
- A temporary discharge permit may be required for certain types and amounts of wash water. Contact the City's Pretreatment Program (www.sanjoseca.gov/pretreatment) or call (408) 945-3000 for more information.
- **Take precautions** to prevent the discharge of debris or hazardous materials that can clog or damage a sanitary drain.



A hose directing wastewater to a utility sink, which drains into the sewer system.

Best Management Practices

- **Block off storm drains** and sloping areas that release water into them.
- Use sand bags, plastic berms filled with water, wattles, or bermed mats to stop wash water.



A storm drain covered with a mat.

Best Management Practices

- **Contain wash areas** so that water does not go down streets and storm drains.
- Point hose towards a landscaped or gravel surface. Wash water will soak into the ground on these surfaces.



A power washer directs runoff and excess water to a landscaped area where it will soak into the ground.

Best Management Practices

- **Reduce your water use.** Use a shut-off nozzle on your hose.
- **Use less-toxic cleaners** or wash without soaps and detergents. Wastewater treatment plants prefer green products over toxic cleaners.



For examples of less-toxic ingredients that can be used as cleaners, visit
www.sanjoseca.gov/index.aspx?NID=1657.

Best Management Practices

- **Remove all debris** and residue that piles up during washing activities.
- Use a wet-vac to vacuum the contained wash water for proper disposal.



A dry/wet vacuum collecting wastewater. A mat and berms are filled with water to protect a storm drain from runoff.



Resources

- **Bay Area Stormwater Management Agencies Association**
This program offers training on how to clean different surfaces in an environmentally-friendly way. They also publish a list of companies that are trained as cleaners.
Visit www.basmaa.org.
- **Contact your Local Environmental Inspector**
Get permission to discharge to the property owner's sanitary sewer plumbing or landscaping before starting the job. Call (408) 945-3000 or visit www.mywatershedwatch.org or www.baywise.org for more local pollution control agency contact information.
- **City of San José Pretreatment Program**
Visit www.sanjoseca.gov/pretreatment for more best management practices.