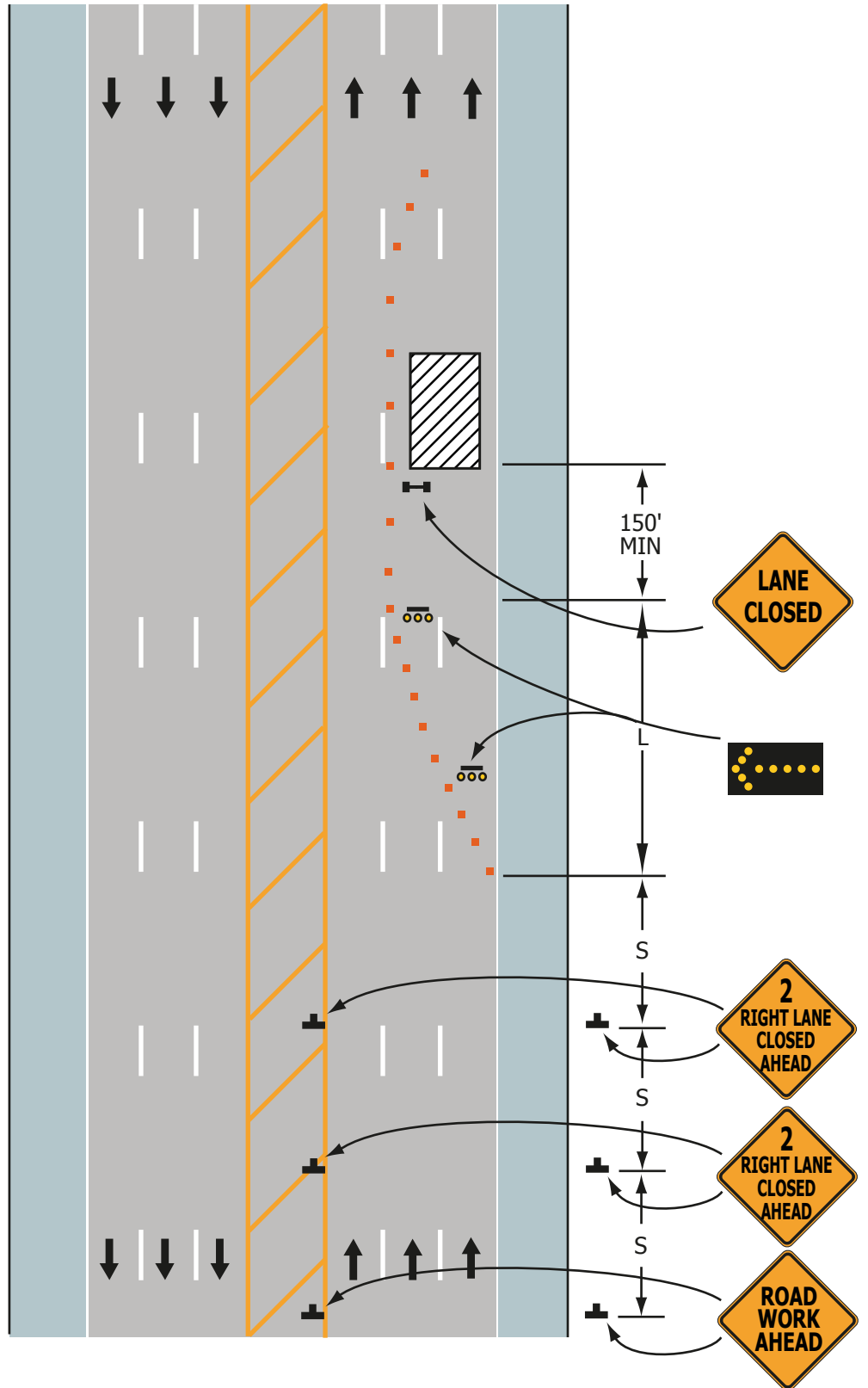


Figure CSJ-5. Multiple Lane Closure - Right Lanes



Note: See Table A for Sign, Cone Spacing, and Taper Lengths.

REVIEWED (___ AS NOTED) BY:

DATE: ___ / ___ / 20___

PERMIT #: _____
 PROJECT INSPECTOR MAY MODIFY TRAFFIC CONTROL PLANS AS FIELD CONDITIONS DICTATE

Typical Application 5