



*Department of Planning, Building and Code Enforcement*  
HARRY FREITAS, DIRECTOR

**NOTICE OF PREPARATION OF A DRAFT  
SUPPLEMENTAL PROGRAM ENVIRONMENTAL IMPACT REPORT  
FOR THE ENVISION SAN JOSÉ 2040 GENERAL PLAN**

As the Lead Agency, the City of San José will prepare a Supplemental Program Environmental Impact Report (Supplemental PEIR) for the Envision San José 2040 General Plan. The Supplemental PEIR will provide information on greenhouse gas emissions to supplement the Envision San José 2040 General Plan Program EIR (State Clearinghouse No. 2009072096) certified by the City of San José on November 1, 2011. The City welcomes your input regarding the scope and content of the environmental information that is relevant to your area of interest, or to your agency's statutory responsibilities in connection with the proposed project. If you are affiliated with a public agency, the Supplemental PEIR may be used by your agency when considering subsequent approvals related to the project.

The project description, location, and a brief summary of the probable environmental effects that will be analyzed in the Supplemental PEIR for the project are attached.

According to State law, the deadline for your response is 30 days after receipt of this notice; however, we would appreciate an earlier response, if possible. Please identify a contact person, and send your response to:

City of San Jose Department of Planning, Building, and Code Enforcement  
Attention: David Keyon  
200 East Santa Clara Street, Tower 3rd Floor  
San José, CA 95113-1905  
Phone: (408) 535-7898, e-mail: [David.Keyon@sanjoseca.gov](mailto:David.Keyon@sanjoseca.gov)

The Department of Building, Planning and Code Enforcement will hold a public scoping meeting to describe the proposed project and the environmental review process, and to obtain your verbal input on the scope of the Supplemental PEIR. This EIR scoping meeting is scheduled for **Thursday, June 18, 2015 from 6:30 to 7:30 pm at San José City Hall (200 East Santa Clara Street), Wing Rooms 118 and 119.** You are welcome to attend and give your input on the scope of the EIR so that it addresses all the relevant environmental issues.

Harry Freitas, Director  
Planning, Building, and Code Enforcement

  
Deputy

6-1-2015  
Date

# NOTICE OF PREPARATION OF A DRAFT SUPPLEMENTAL PROGRAM ENVIRONMENTAL IMPACT REPORT FOR THE ENVISION SAN JOSÉ 2040 GENERAL PLAN

June 2015

## 1.0 INTRODUCTION

The purpose of an Environmental Impact Report (EIR) is to inform decision-makers and the general public of the environmental effects of a proposed project that an agency may implement or approve. The EIR process is intended to provide information sufficient to evaluate a project and its potential for significant impacts on the environment, to examine methods of reducing adverse impacts, and to consider alternatives to the project.

The EIR will be a Supplemental Program EIR (Supplemental PEIR) to the previously certified *Envision San José 2040 General Plan Final Program EIR* (City of San José, 2011 Final PEIR). In a stipulated judgment dismissing the case *California Clean Energy Committee (CCEC) v. City of San José* (Case Number: 1-11-CV-212623) involving a challenge to the 2011 General Plan Final PEIR, the City of San José agreed to prepare a Supplemental PEIR to supplement the information included in the 2011 General Plan Final PEIR regarding greenhouse gas emissions and global climate change.

The Supplemental PEIR will be prepared and processed in accordance with the California Environmental Quality Act (CEQA) of 1970, as amended and the City of San José's requirements. In accordance with the requirements of CEQA, the Supplemental PEIR will include the following:

- A summary of the project;
- A project description;
- A description of the existing environmental setting, probable environmental impacts, and mitigation measures for greenhouse gas emissions;
- Alternatives to the project as proposed; and
- Environmental consequences, including (a) any significant environmental effects which cannot be avoided if the project is implemented.

This Supplemental PEIR will provide a focused evaluation of the impacts of the project according to the requirements of the City of San José and CEQA. The *Envision San José 2040 General Plan* is available for review at <http://www.sanjoseca.gov/index.aspx?nid=1737>.

## 2.0 PROJECT BACKGROUND

The *Envision San Jose 2040 General Plan*, adopted in November 2011, is a comprehensive update to the City's previous San Jose 2020 General Plan. It is a long-term plan that describes the amount, type, and phasing of development needed to meet the City's social, economic and environmental goals. The General Plan is the policy framework for decision making on both private development projects and City capital expenditures. The *Envision San José 2040 General Plan* contains:

- Strategies to create a balanced mix of jobs and housing
- Strategies to address greenhouse gas reduction and conserve natural resources

- Strategies that create complete mixed-use communities in Urban Villages
- Fiscally sustainable public service delivery goals
- Complete streets designed for all transportation modes, including bicycles and pedestrians
- Strategies to create healthy communities
- Art and cultural facilities and programs

The Land Use/Transportation Diagram and development assumptions adopted in 2011 included the addition of up to 120,000 new dwelling units and up to 470,000 new jobs within the City of San José. The General Plan primarily added growth capacity in focused growth areas of the City using a transit corridor and Urban Villages strategy. These locations were identified with the intent of creating an interconnected city by allowing for additional growth along multi-modal transportation corridors in order to link Downtown, high-intensity villages, and local serving neighborhood villages.

The General Plan also included a Greenhouse Gas (GHG) Reduction Strategy that was an integral part of the General Plan and was designed to serve as a guide for the community to achieve the City’s vision of sustainable greenhouse gas emissions. The GHG Reduction Strategy identified specific policies incorporated within the *Envision San José 2040 General Plan* that were required for individual projects, as applicable, to reduce GHG emissions. In *California Clean Energy Committee (CCEC) v. City of San José*, the Superior Court determined that the GHG emissions analysis in the 2011 General Plan Final PEIR was inadequate under CEQA and required the preparation of a supplemental EIR focused on GHG emissions.

### **3.0 PROJECT LOCATION**

The City of San José is located in the Santa Clara Valley at the southern tip of the San Francisco Bay. The *Envision San José 2040 General Plan* provides a vision for future growth and development located within the City’s existing Urban Growth Boundary (approximately 143 square miles) and also encompasses all areas with the City’s Sphere of Influence (approximately 280 square miles). The City’s location within the San Francisco Bay region, vicinity, and locations proposed for planned jobs and housing growth are shown on Figures 1, 2 and 3, respectively.

### **4.0 DESCRIPTION OF THE PROJECT**

The project is re-adoption of a GHG Reduction Strategy as part of the *Envision San Jose 2040 General Plan* and continued implementation of the *Envision San Jose 2040 General Plan* consistent with the GHG Reduction Strategy.

The *Envision San Jose 2040 General Plan* is a long-term plan that describes the amount, type, and phasing of development in the City of San José. The land use/transportation diagram and development assumptions adopted in 2011 include the potential addition of up to 120,000 new dwelling units and up to 470,000 new jobs, supporting a population of approximately 1.3 million people by 2035. A key strategy of the Envision General Plan is to focus new growth capacity in specifically identified Growth Areas, while the majority of the City is not planned for additional growth or intensification. It also focuses new growth in new Urban Village areas with a compact and dense form that reduces Vehicle Miles Traveled (VMT), supports walking, provides opportunities for incorporating retail and other services in a mixed-use format, and supports transit use.

The GHG Reduction Strategy includes quantification of existing and projected GHG emissions in 2020 and 2035; strategies and performance measures for further reducing GHG emissions; and an implementation program for monitoring, reporting progress on, and updating the GHG Reduction Strategy over time as new technologies or practical measures are identified. The GHG Reduction Strategy identifies specific policies incorporated within the *Envision San José 2040 General Plan* for individual projects, as applicable, to reduce GHG emissions. Once re-adopted, projects that conform to General Plan policies and the Land Use/Transportation Diagram will be deemed consistent with the GHG Reduction Strategy.

There are no other modifications proposed to the project description of the *Envision San José 2040 General Plan* at this time. The Supplemental PEIR will reevaluate the significance of projected greenhouse gas emissions associated with existing and planned land uses in San José and the consistency of the General Plan and GHG Reduction Strategy with the California Climate Change Scoping Plan and other plans.

## **5.0 Environmental Effects of the Project**

The Supplemental PEIR will include the following specific environmental category and sections related to implementation of the *Envision San José 2040 General Plan*.

### **Greenhouse Gas Emissions**

The supplemental analysis will revise the greenhouse gas emission section of the Final PEIR to provide additional information to the decision makers and the public. This will include an analysis of the General Plan for consistency with the emission reduction measures applicable to local governments as provided in the December 2008 Climate Change Scoping Plan from the California Air Resources Board (CARB), and the 2014 Scoping Plan Update, as relevant. The analysis will also include a determination as to whether significant impacts would result from any General Plan inconsistencies with applicable measures in the 2008 Climate Change Scoping Plan.

The analysis will also include estimated emissions from the planning area by comparing the citywide baseline emissions of 7.6 million metric tons (MMT) in 2008 with citywide projected emissions in 2035, and a determination of whether a cumulatively considerable contribution to global climate change would result. Mitigation measures that are feasible and enforceable (as required under CEQA) will be identified, as appropriate, and will be incorporated into the GHG Reduction Strategy.

### **Alternatives**

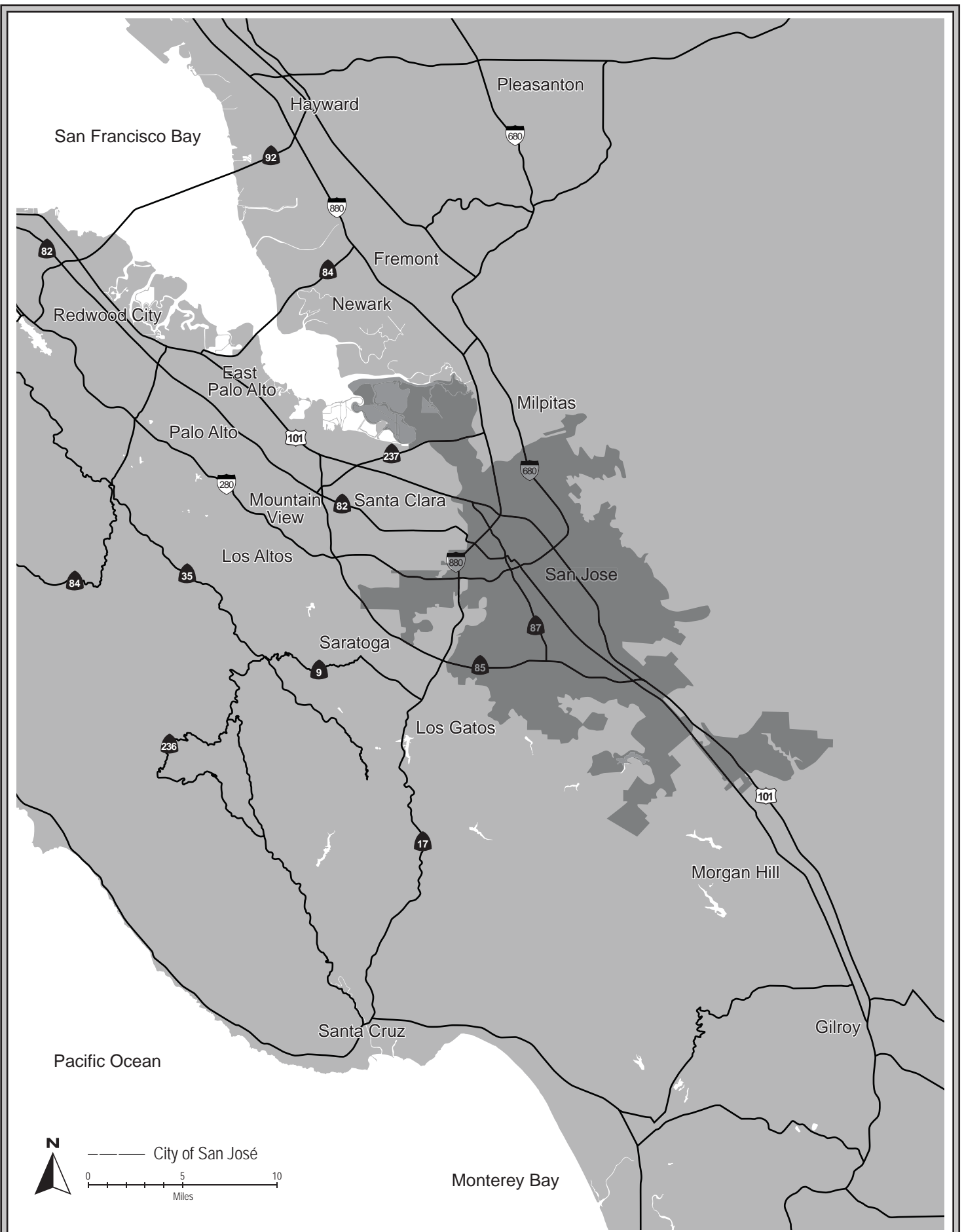
The Alternatives section of the General Plan PEIR circulated in 2011 includes a range of potentially feasible project alternatives with several combinations of planned jobs and housing development totals, along with a No Project Alternative. The Supplemental PEIR will similarly evaluate these alternatives with respect to greenhouse gas emissions. The relative differences in greenhouse gas emissions and efficiency for 2020 and 2035 will be presented along with a comparison of impacts from alternatives to the project (*Envision San José 2040 General Plan*).

The Supplemental PEIR will evaluate possible alternatives to the project, based on the results of the supplemental environmental analysis. The alternatives discussion will focus on those

alternatives that could feasibly accomplish most of the objectives of the project, while avoiding or substantially reducing any significant environmental effects related to greenhouse gas emissions. The environmentally superior alternative(s) will be identified based on the degree of associated environmental impacts related to greenhouse gas emissions.

**Other Sections**

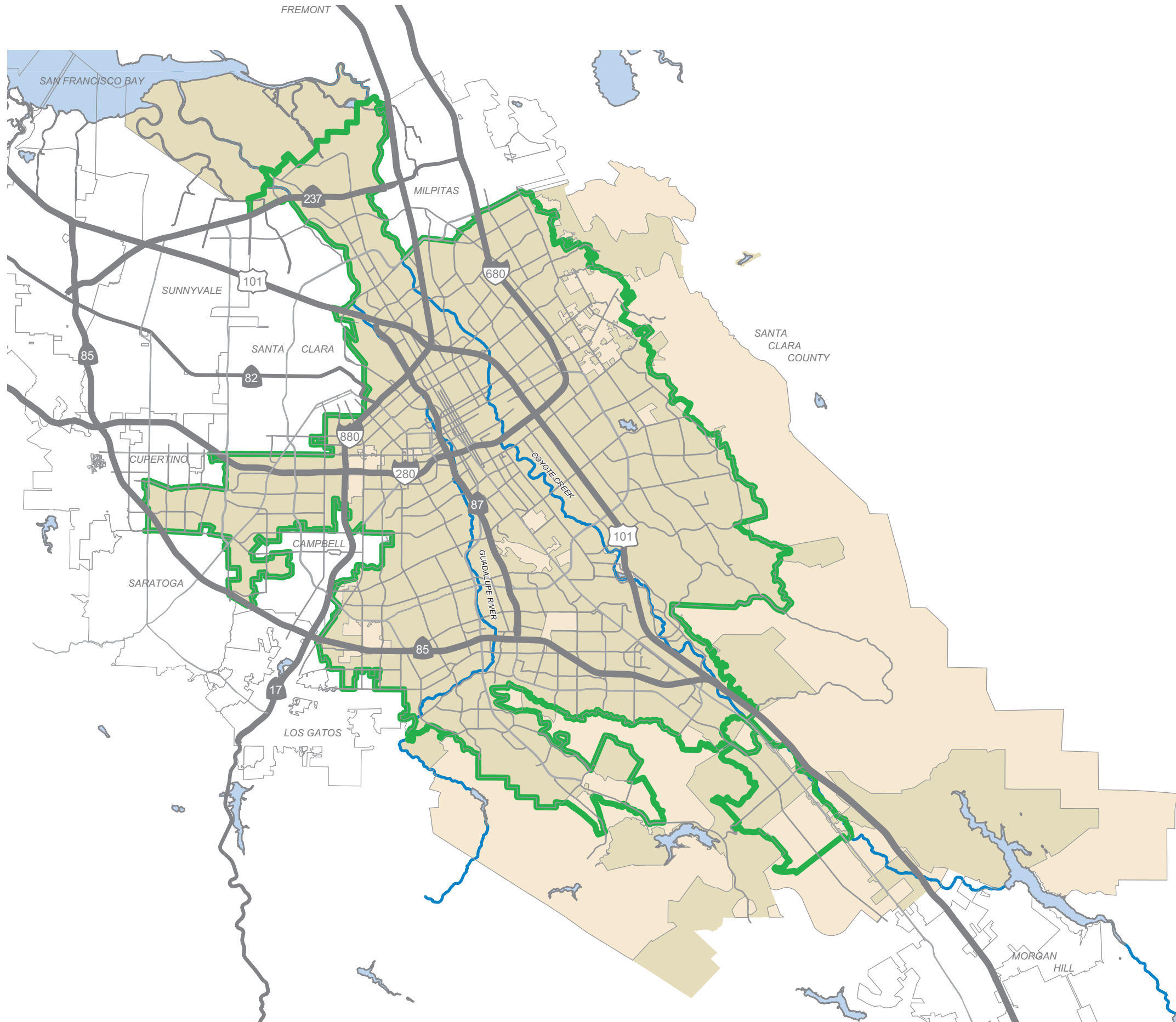
The Supplemental PEIR will also address all other topics required under the CEQA Guidelines, including: 1) Significant Unavoidable Impacts; 2) References; and 3) EIR Authors. Relevant technical reports will be provided as appendices.



REGIONAL MAP

FIGURE 1





**Legend**

- Urban Growth Boundary
- City of San Jose
- Sphere of Influence



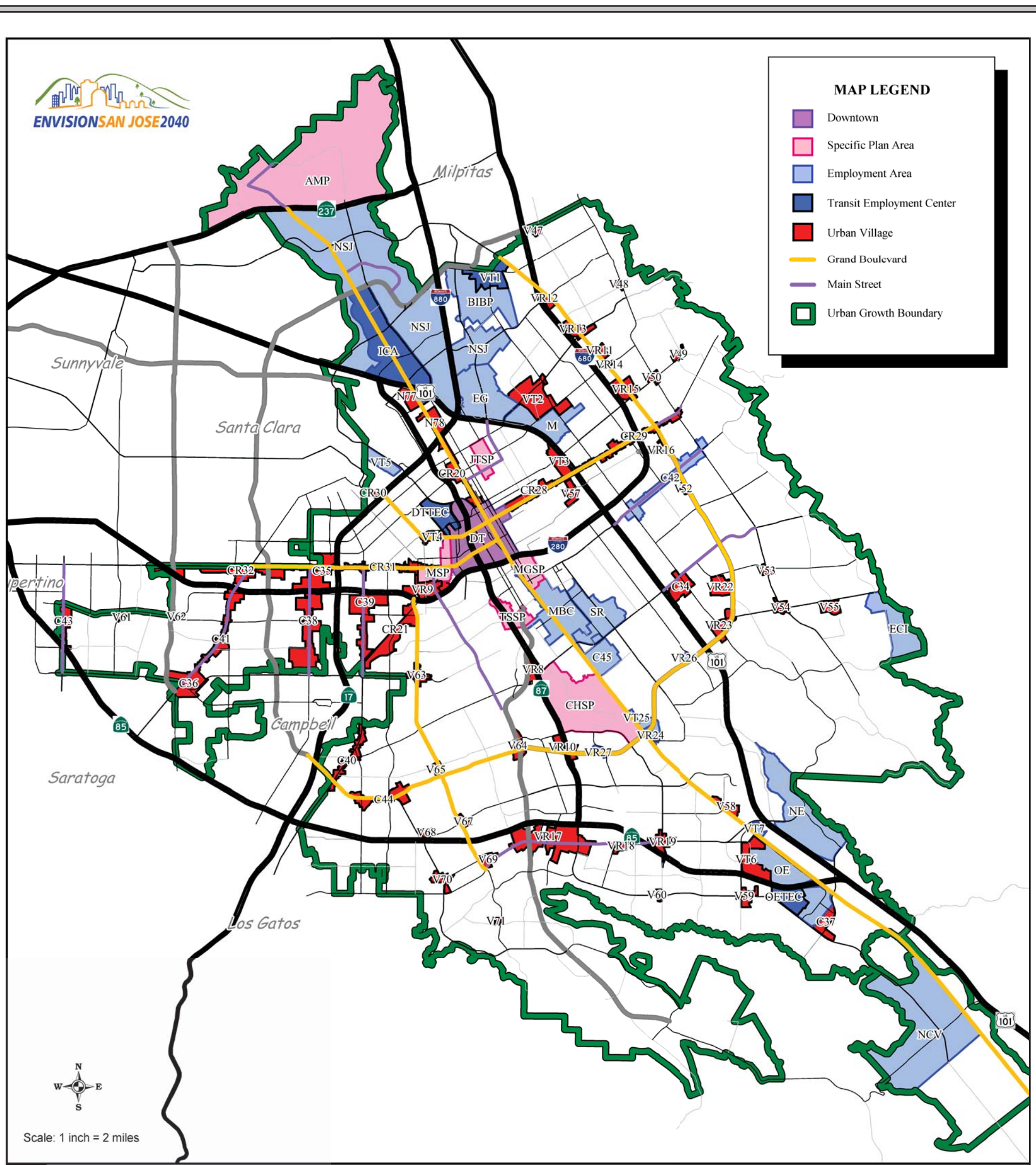
VICINITY MAP

FIGURE 2



**MAP LEGEND**

- Downtown
- Specific Plan Area
- Employment Area
- Transit Employment Center
- Urban Village
- Grand Boulevard
- Main Street
- Urban Growth Boundary



Scale: 1 inch = 2 miles

**KEY**

**Downtown**

- DT = Downtown
- DTTEC = Downtown Transit Employment Center

**Specific Plan Areas**

- AMP = Alviso (Master Plan)
- CHSP = Communications Hill
- JTSP = Jackson-Taylor (Residential Strategy)
- MGSP = Martha Gardens
- MSP = Midtown
- TSSP = Tamien Station Area

**Employment Areas**

- BIBP = Berryessa International Business Park
- ECI = Evergreen Campus Industrial
- EG = East Gish
- ICA = Industrial Core Area
- M = Mabury
- MBC = Monterey Business Corridor
- NCV = North Coyote Valley
- NE = New Edenvale
- NSJ = North San Jose
- OE = Old Edenvale
- OETEC = Old Edenvale Transit Employment Center
- SR = Senter Road

**Employment Areas (continued)**

- C42 = Story Rd
- C45 = County Fairgrounds
- VR16 = S. Capitol Av/Capitol Ex
- VR24 = Monterey Hy/Senter Rd
- VR26 = E. Capitol Ex/McLaughlin Av
- VR27 = W. Capitol Ex/Vistapark Dr
- VT1 = Lundy/Milpitas BART
- VT5 = Santa Clara/Airport West (FMC)
- VT7 = Blossom Hill Rd/Monterey Rd
- VT25 = W. Capitol Ex/Monterey Rd

**Urban Villages**

- C34 = Tully Rd/S. King Rd
- C35 = Valley Fair/Santana Row
- C36 = Paseo de Saratoga
- C37 = Santa Teresa Bl/Bernal Rd
- C38 = Winchester Bl
- C39 = S. Bascom Av (North)
- C40 = S. Bascom Av (South)
- C41 = Saratoga Av
- C43 = S. De Anza Bl
- C44 = Camden Av/Hillsdale Av

**Urban Villages (continued)**

- CR20 = N. 1st St
- CR21 = Southwest Ex
- CR28 = E. Santa Clara St
- CR29 = Alum Rock Av
- CR30 = The Alameda (West)
- CR31 = W. San Carlos St
- CR32 = Stevens Creek Bl
- N77 = Rincon South 1
- N78 = Rincon South 2
- V47 = Landess Av/Morrill Av
- V48 = Piedmont Rd/Sierra Rd
- V49 = McKee Rd/Toyon Av
- V50 = McKee Rd/White Rd
- V52 = E. Capitol Ex/Foxdale Dr
- V53 = Quimby Rd/S. White Rd
- V54 = Aborn Rd/San Felipe Rd
- V55 = Evergreen Village
- V57 = S. 24th St/William Ct
- V58 = Monterey Rd/Chynoweth Av
- V59 = Santa Teresa Bl/Cottle Rd
- V60 = Santa Teresa Bl/Snell Av
- V61 = Bollinger Rd/Miller Av
- V62 = Bollinger Rd/Lawrence Ex
- V63 = Hamilton Av/Meridian Av

**Urban Villages (continued)**

- V64 = Almaden Ex/Hillsdale Av
- V65 = Foxworthy Av/Meridian Av
- V67 = Branham Ln/Meridian Av
- V68 = Camden Av/Branham Ln
- V69 = Kooser Rd/Meridian Av
- V70 = Camden Av/Kooser Rd
- V71 = Meridian Av/Redmond Av
- VR8 = Curmer Light Rail/Caltrain
- VR9 = Race St Light Rail
- VR10 = Capitol Ex/Hy 87 Light Rail
- VR11 = Penitencia Creek Light Rail
- VR12 = N. Capitol Av/Hostetter Rd
- VR13 = N. Capitol Av/Berryessa Rd
- VR14 = N. Capitol Av/Mabury Rd
- VR15 = N. Capitol Av/McKee Rd
- VR17 = Oakridge Mall and Vicinity
- VR18 = Blossom Hill Rd/Cahalan Av
- VR19 = Blossom Hill Rd/Snell Av
- VR22 = Arcadia/Eastridge
- VR23 = E. Capitol Ex/Silver Creek Rd
- VT2 = Berryessa BART
- VT3 = Five Wounds BART
- VT4 = The Alameda (East)
- VT6 = Blossom Hill Rd/Hitachi