

SUPPLEMENTAL

COUNCIL AGENDA: 4-12-11

ITEM: 3.3



Memorandum

TO: HONORABLE MAYOR AND
CITY COUNCIL

FROM: Deanna J. Santana

SUBJECT: MEDICAL MARIJUANA

DATE: April 8, 2011

Approved

Date

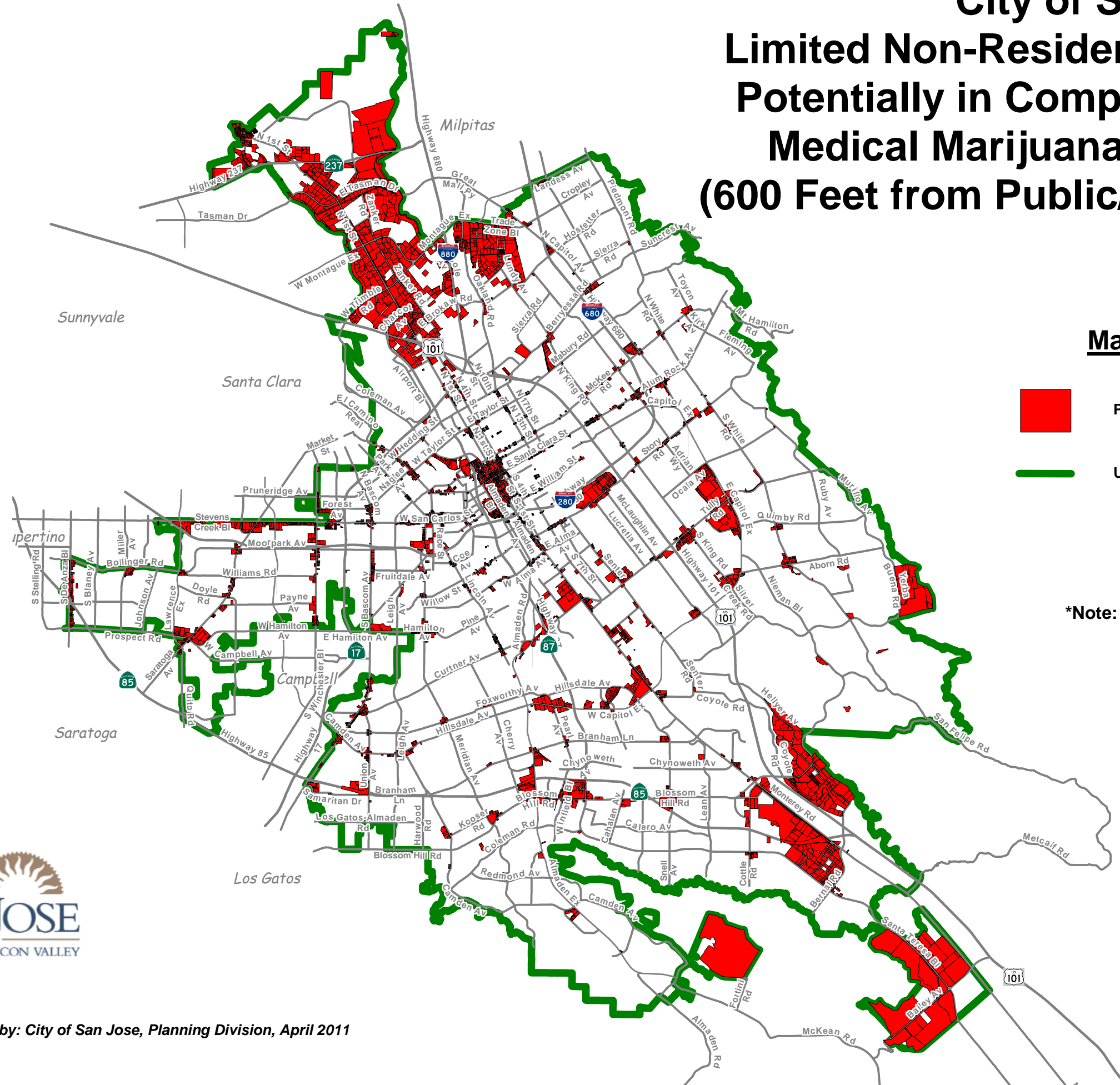
4/8/11

Please find enclosed two maps that will be referenced during staff's presentation on Medical Marijuana.

DEANNA J. SANTANA
Deputy City Manager



City of San Jose Limited Non-Residential Zoned Parcels* Potentially in Compliance with AB2650 Medical Marijuana Location Criteria (600 Feet from Public/Private K-12 School)



Map Legend

- Parcels Potentially in Compliance
- Urban Service Area

*Note: parcels zoned CP, CN, CG, DC, IP, or CIC



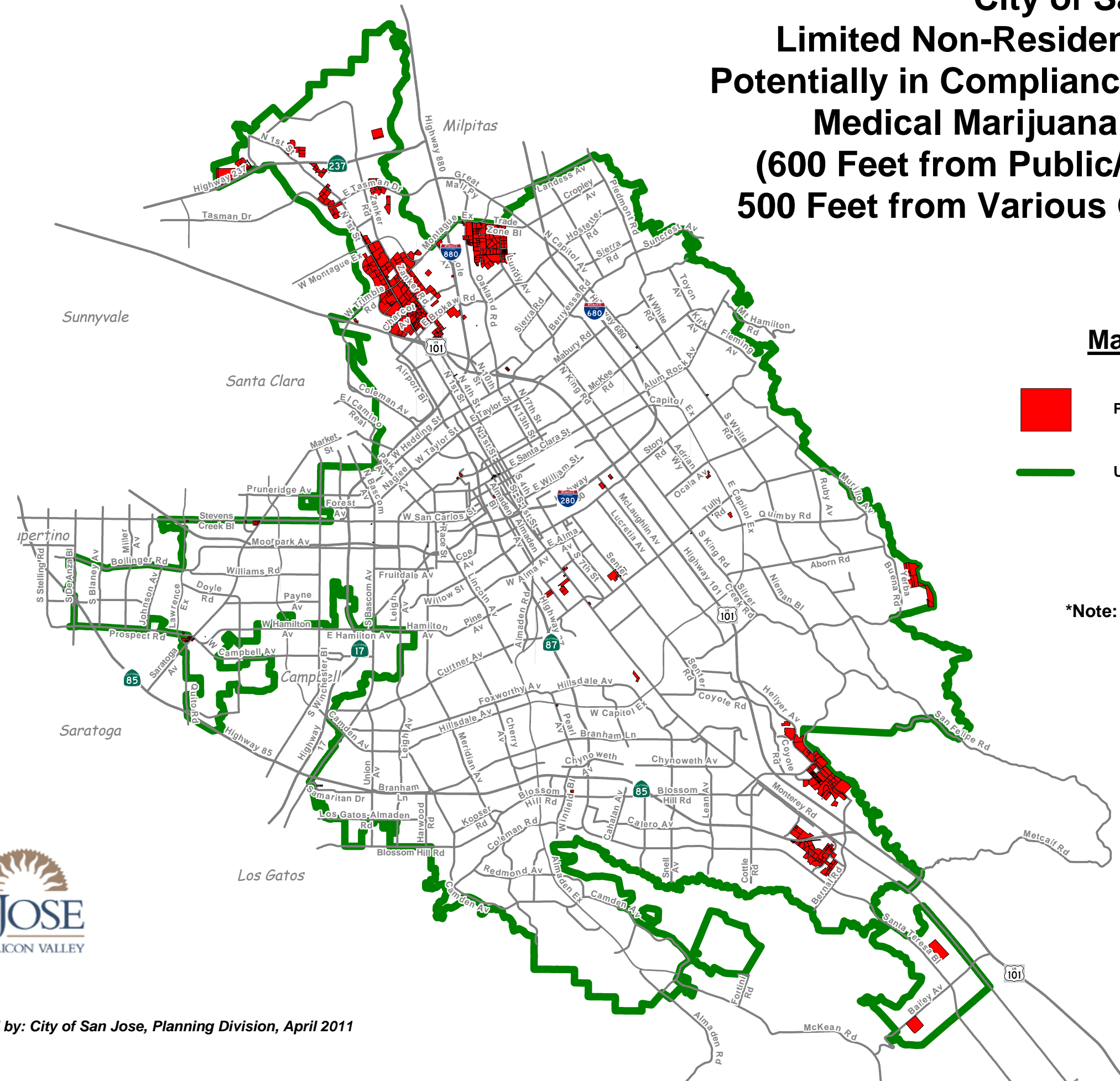
Map Prepared by: City of San Jose, Planning Division, April 2011



Scale: 1 inch = 2 miles

City of San Jose

Limited Non-Residential Zoned Parcels* Potentially in Compliance with AB2650 and CSJ Medical Marijuana Location Criteria (600 Feet from Public/Private K-12 School, 500 Feet from Various Other Specified Uses)



Map Legend

- Parcels Potentially in Compliance
- Urban Service Area

*Note: parcels zoned CP, CN, CG, DC, IP, or CIC



Map Prepared by: City of San Jose, Planning Division, April 2011



Scale: 1 inch = 2 miles