

# Proposed Zoning Regulations for Medical Marijuana

## Council Motion on the Floor

### Zoning Districts

- CIC- Combined Industrial / Commercial
- LI- Light Industrial
- DC- Downtown Primary Commercial
- IP- Industrial Park
- HI- Heavy Industrial

### Sensitive Uses (1,000 Feet Buffer)\*

- Public and/or Private Schools
- Child Daycare Centers
- Community/Recreation Centers
- Parks
- Libraries

### Rehabilitation Centers (500 Feet Buffer)\*

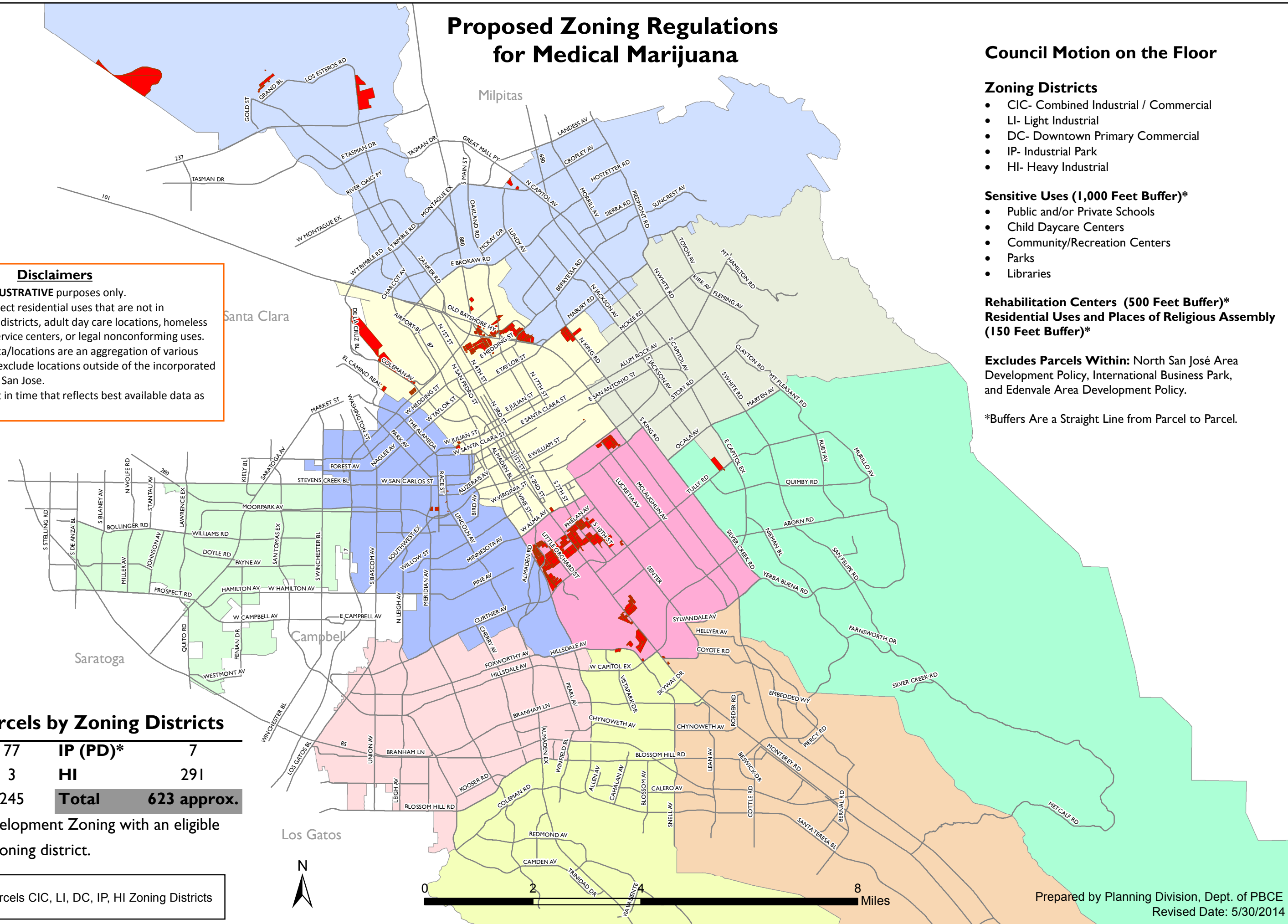
### Residential Uses and Places of Religious Assembly (150 Feet Buffer)\*

**Excludes Parcels Within:** North San José Area Development Policy, International Business Park, and Edenvale Area Development Policy.

\*Buffers Are a Straight Line from Parcel to Parcel.

### Disclaimers


- Map made for **ILLUSTRATIVE** purposes only.
- Map does not reflect residential uses that are not in residential zoning districts, adult day care locations, homeless shelters, drop-in service centers, or legal nonconforming uses.
- Sensitive Uses data/locations are an aggregation of various data sources and exclude locations outside of the incorporated area of the City of San Jose.
- Map is a snapshot in time that reflects best available data as of April 1, 2014.



### Eligible Parcels by Zoning Districts

IP	77	IP (PD)*	7
CIC	3	HI	291
LI	245	<b>Total</b>	<b>623 approx.</b>

\*PD Planned Development Zoning with an eligible alternative base zoning district.

 Eligible Parcels CIC, LI, DC, IP, HI Zoning Districts

# Proposed Zoning Regulations for Medical Marijuana

## Staff Recommendation with Rocha Memo

Mountain View

Sunnyvale

San Jose

- Disclaimers**
- Map made for **ILLUSTRATIVE** purposes only.
  - Map does not reflect residential uses that are not in residential zoning districts, adult day care locations, homeless shelters, drop-in service centers, or legal nonconforming uses.
  - Sensitive Uses data/locations are an aggregation of various data sources and exclude locations outside of the incorporated area of the City of San Jose.
  - Map is a snapshot in time that reflects best available data as of April 1, 2014.

**Zoning Districts**

- CIC- Combined Industrial / Commercial
- LI- Light Industrial
- DC- Downtown Primary Commercial
- IP- Industrial Park
- HI- Heavy Industrial

**Sensitive Uses (1,000 Feet Buffer)\***

- Public and/or Private Schools
- Child Daycare Centers
- Places of Religious Assembly
- Community/Recreation Centers
- Parks
- Libraries

**Rehabilitation Centers (500 Feet Buffer)\***

**Residential Uses (150 Feet Buffer)\***


**Excludes Parcels Within:** North San José Industrial Core Area and 150 ft buffer, Zones 1,3,4 of Edenvale Area Development Policy.

\*Buffers Are a Straight Line from Parcel to Parcel.

**Eligible Parcels by Zoning Districts**

<b>LI</b>	106	<b>LI (PD)*</b>	17
<b>IP</b>	292	<b>IP (PD)*</b>	8
<b>HI</b>	272	<b>HI (PD)*</b>	1
<b>CIC</b>	4	<b>Total</b>	<b>700 approx.</b>

\*PD Planned Development Zoning with an eligible alternative base zoning district.

 Eligible Parcels in CIC, LI, HI, DC, IP Zoning Districts

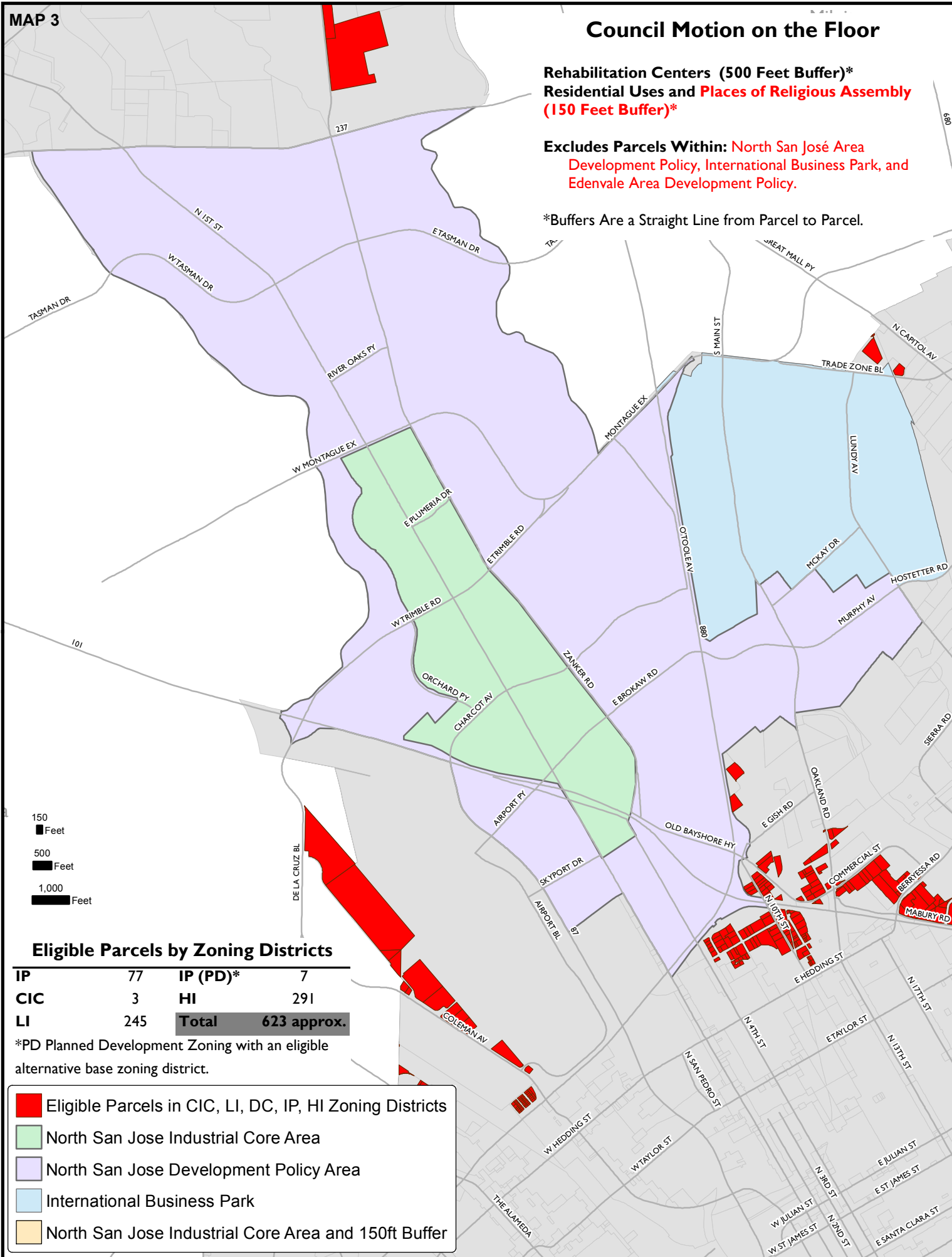


### Council Motion on the Floor

Rehabilitation Centers (500 Feet Buffer)\*  
 Residential Uses and Places of Religious Assembly (150 Feet Buffer)\*

Excludes Parcels Within: North San José Area Development Policy, International Business Park, and Edenvale Area Development Policy.

\*Buffers Are a Straight Line from Parcel to Parcel.



#### Eligible Parcels by Zoning Districts

IP	77	IP (PD)*	7
CIC	3	HI	291
LI	245	<b>Total</b>	<b>623 approx.</b>

\*PD Planned Development Zoning with an eligible alternative base zoning district.

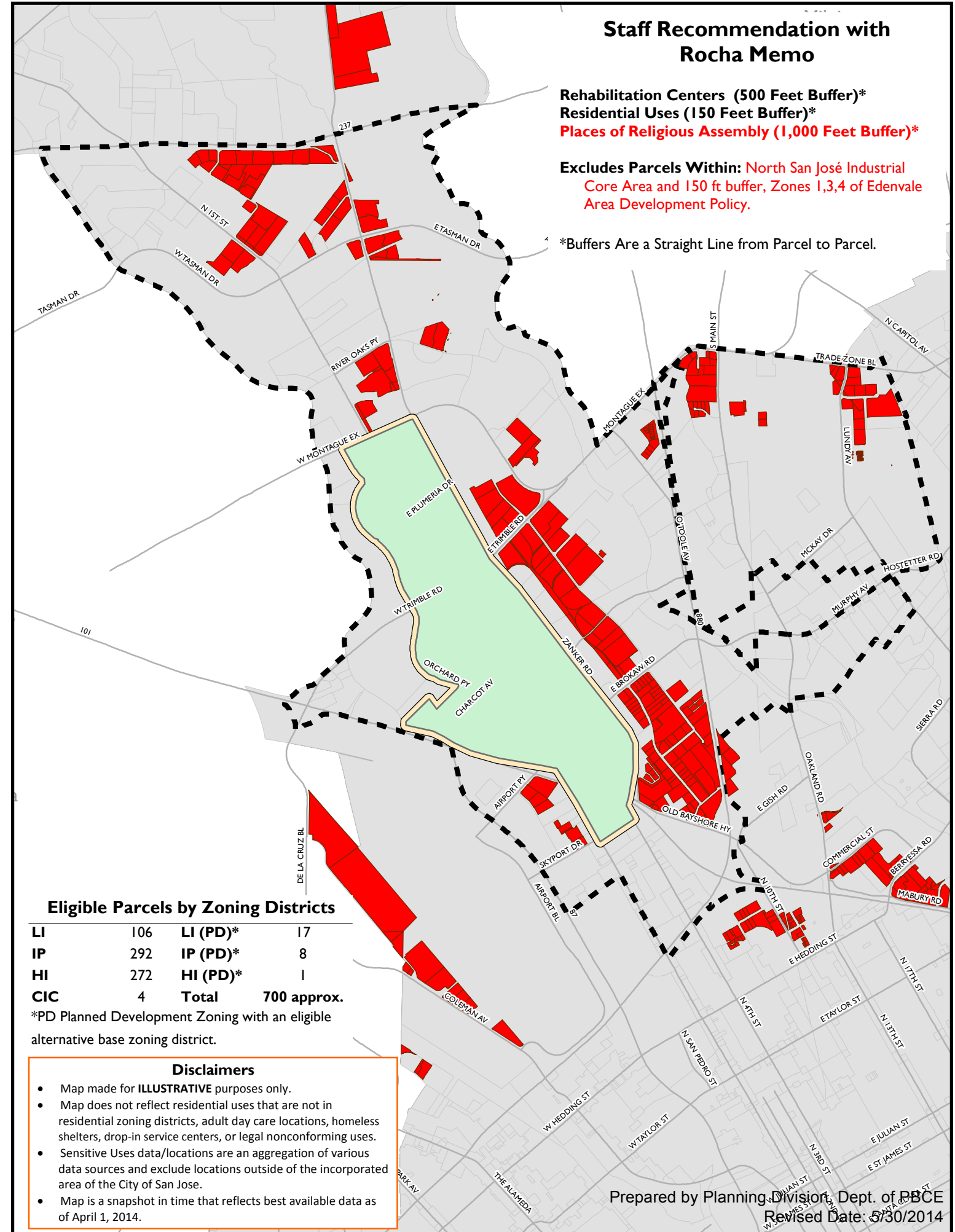
- Eligible Parcels in CIC, LI, DC, IP, HI Zoning Districts
- North San Jose Industrial Core Area
- North San Jose Development Policy Area
- International Business Park
- North San Jose Industrial Core Area and 150ft Buffer

### Staff Recommendation with Rocha Memo

Rehabilitation Centers (500 Feet Buffer)\*  
 Residential Uses (150 Feet Buffer)\*  
 Places of Religious Assembly (1,000 Feet Buffer)\*

Excludes Parcels Within: North San José Industrial Core Area and 150 ft buffer, Zones 1,3,4 of Edenvale Area Development Policy.

\*Buffers Are a Straight Line from Parcel to Parcel.



#### Eligible Parcels by Zoning Districts

LI	106	LI (PD)*	17
IP	292	IP (PD)*	8
HI	272	HI (PD)*	1
CIC	4	<b>Total</b>	<b>700 approx.</b>

\*PD Planned Development Zoning with an eligible alternative base zoning district.

#### Disclaimers

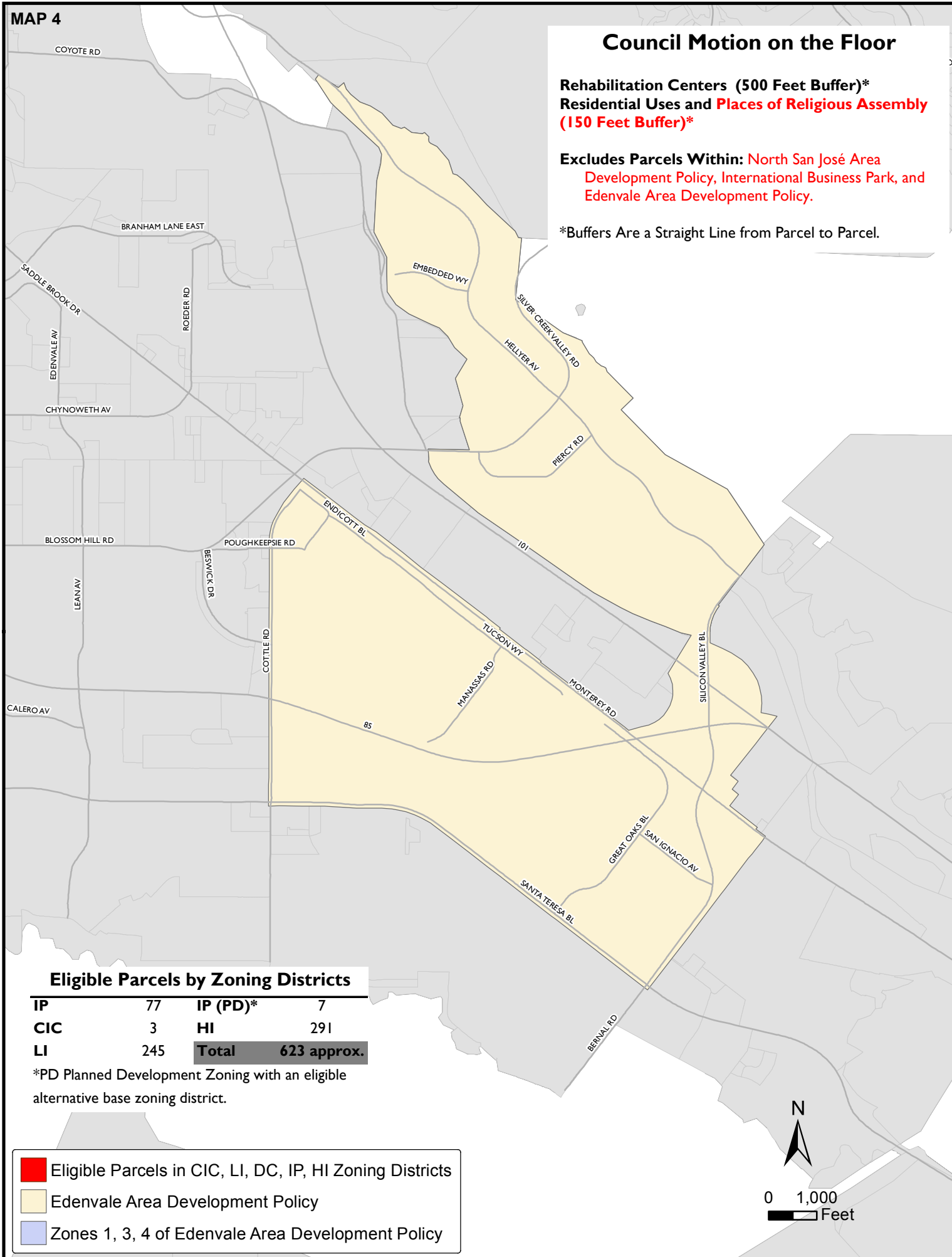
- Map made for **ILLUSTRATIVE** purposes only.
- Map does not reflect residential uses that are not in residential zoning districts, adult day care locations, homeless shelters, drop-in service centers, or legal nonconforming uses.
- Sensitive Uses data/locations are an aggregation of various data sources and exclude locations outside of the incorporated area of the City of San Jose.
- Map is a snapshot in time that reflects best available data as of April 1, 2014.

### Council Motion on the Floor

Rehabilitation Centers (500 Feet Buffer)\*  
Residential Uses and **Places of Religious Assembly (150 Feet Buffer)\***

**Excludes Parcels Within:** North San José Area Development Policy, International Business Park, and Edenvale Area Development Policy.

\*Buffers Are a Straight Line from Parcel to Parcel.



#### Eligible Parcels by Zoning Districts

IP	77	IP (PD)*	7
CIC	3	HI	291
LI	245	<b>Total</b>	<b>623 approx.</b>

\*PD Planned Development Zoning with an eligible alternative base zoning district.

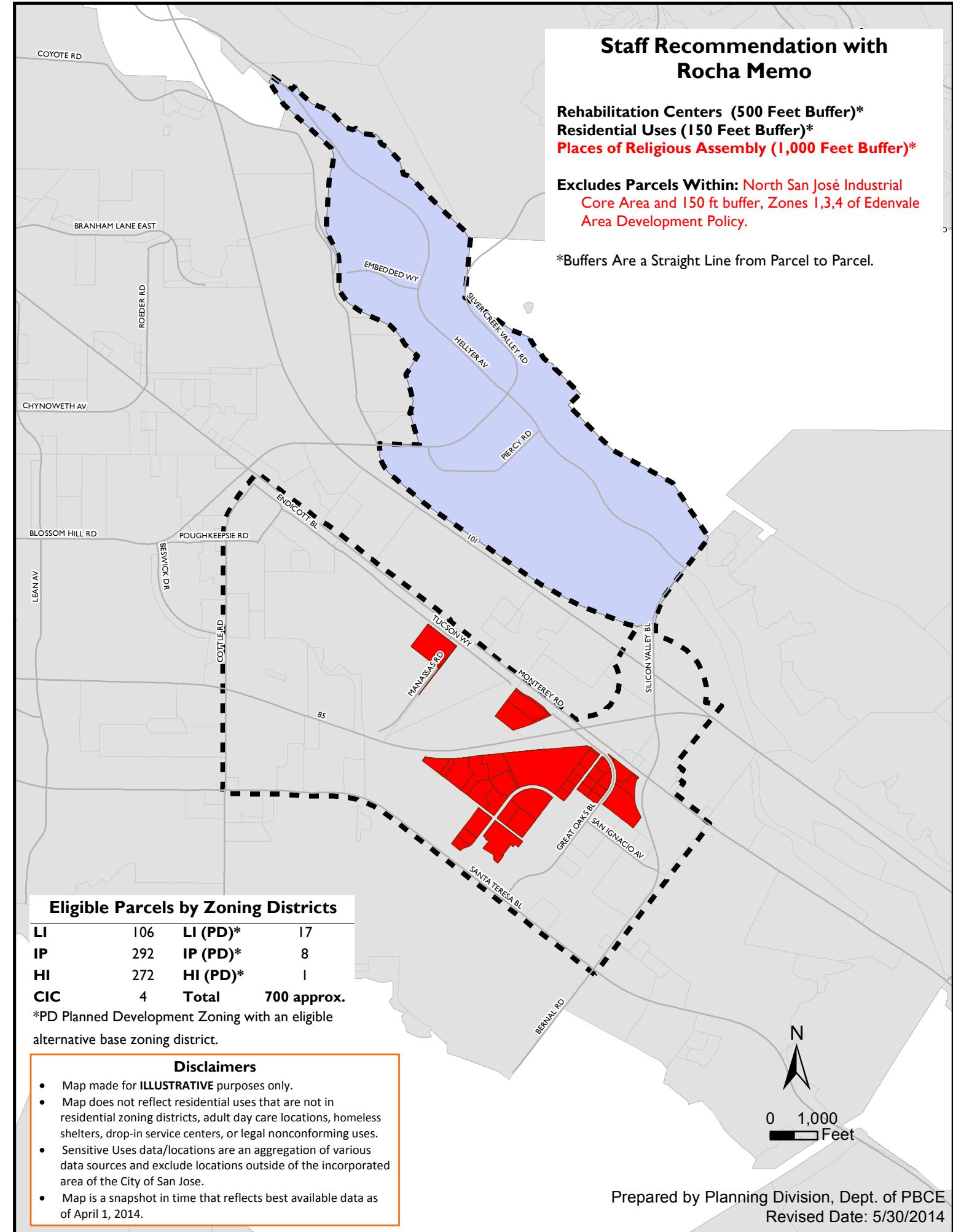
- Eligible Parcels in CIC, LI, DC, IP, HI Zoning Districts
- Edenvale Area Development Policy
- Zones 1, 3, 4 of Edenvale Area Development Policy

### Staff Recommendation with Rocha Memo

Rehabilitation Centers (500 Feet Buffer)\*  
Residential Uses (150 Feet Buffer)\*  
**Places of Religious Assembly (1,000 Feet Buffer)\***

**Excludes Parcels Within:** North San José Industrial Core Area and 150 ft buffer, Zones 1,3,4 of Edenvale Area Development Policy.

\*Buffers Are a Straight Line from Parcel to Parcel.



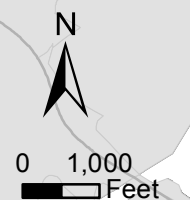
#### Eligible Parcels by Zoning Districts

LI	106	LI (PD)*	17
IP	292	IP (PD)*	8
HI	272	HI (PD)*	1
CIC	4	<b>Total</b>	<b>700 approx.</b>

\*PD Planned Development Zoning with an eligible alternative base zoning district.

#### Disclaimers

- Map made for **ILLUSTRATIVE** purposes only.
- Map does not reflect residential uses that are not in residential zoning districts, adult day care locations, homeless shelters, drop-in service centers, or legal nonconforming uses.
- Sensitive Uses data/locations are an aggregation of various data sources and exclude locations outside of the incorporated area of the City of San Jose.
- Map is a snapshot in time that reflects best available data as of April 1, 2014.

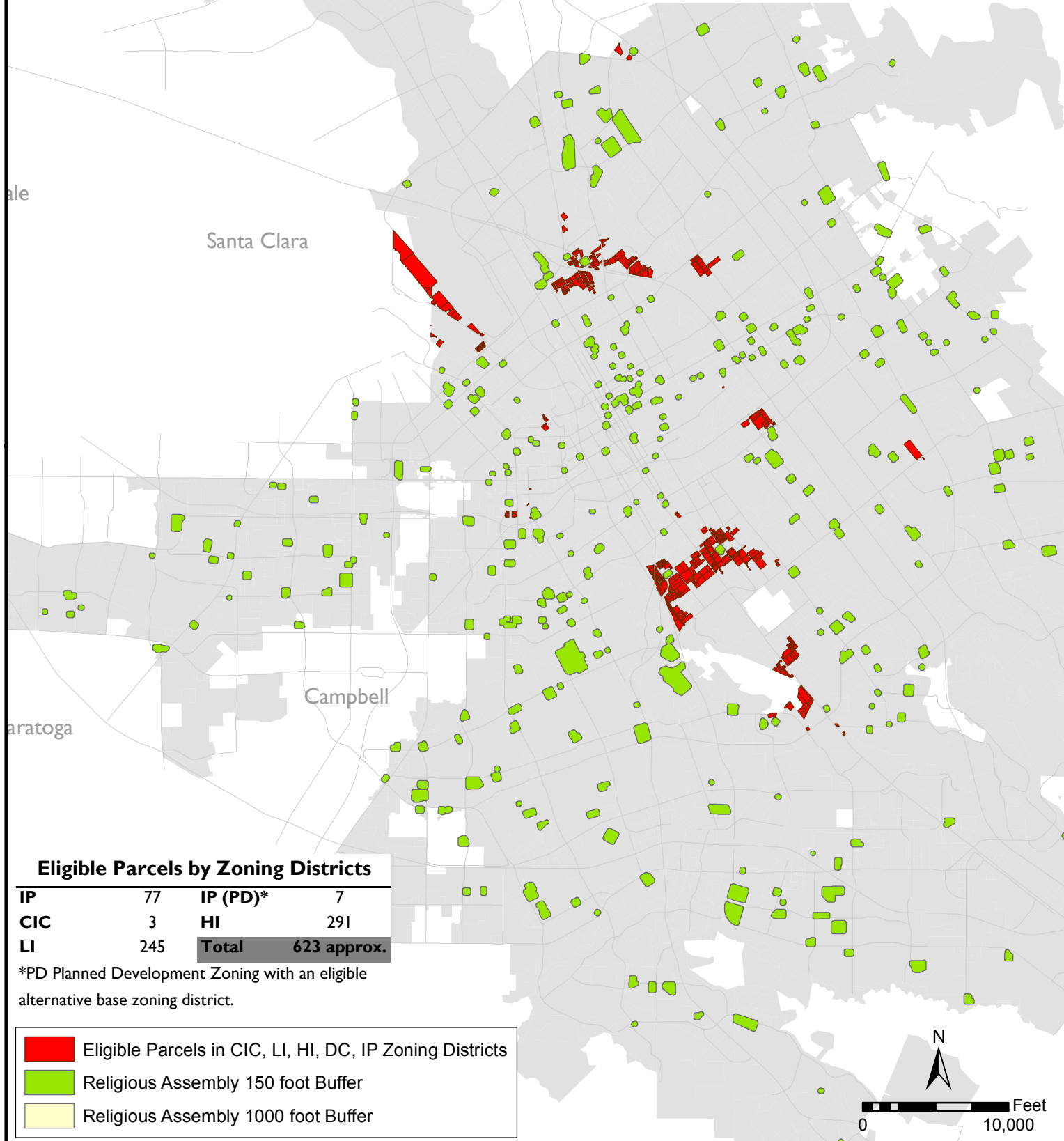


### Council Motion on the Floor

Rehabilitation Centers (500 Feet Buffer)\*  
 Residential Uses and Places of Religious Assembly  
 (150 Feet Buffer)\*

Excludes Parcels Within: North San José Area  
 Development Policy, International Business Park, and  
 Edenvale Area Development Policy.

\*Buffers Are a Straight Line from Parcel to Parcel.



#### Eligible Parcels by Zoning Districts

IP	77	IP (PD)*	7
CIC	3	HI	291
LI	245	<b>Total</b>	<b>623 approx.</b>

\*PD Planned Development Zoning with an eligible alternative base zoning district.

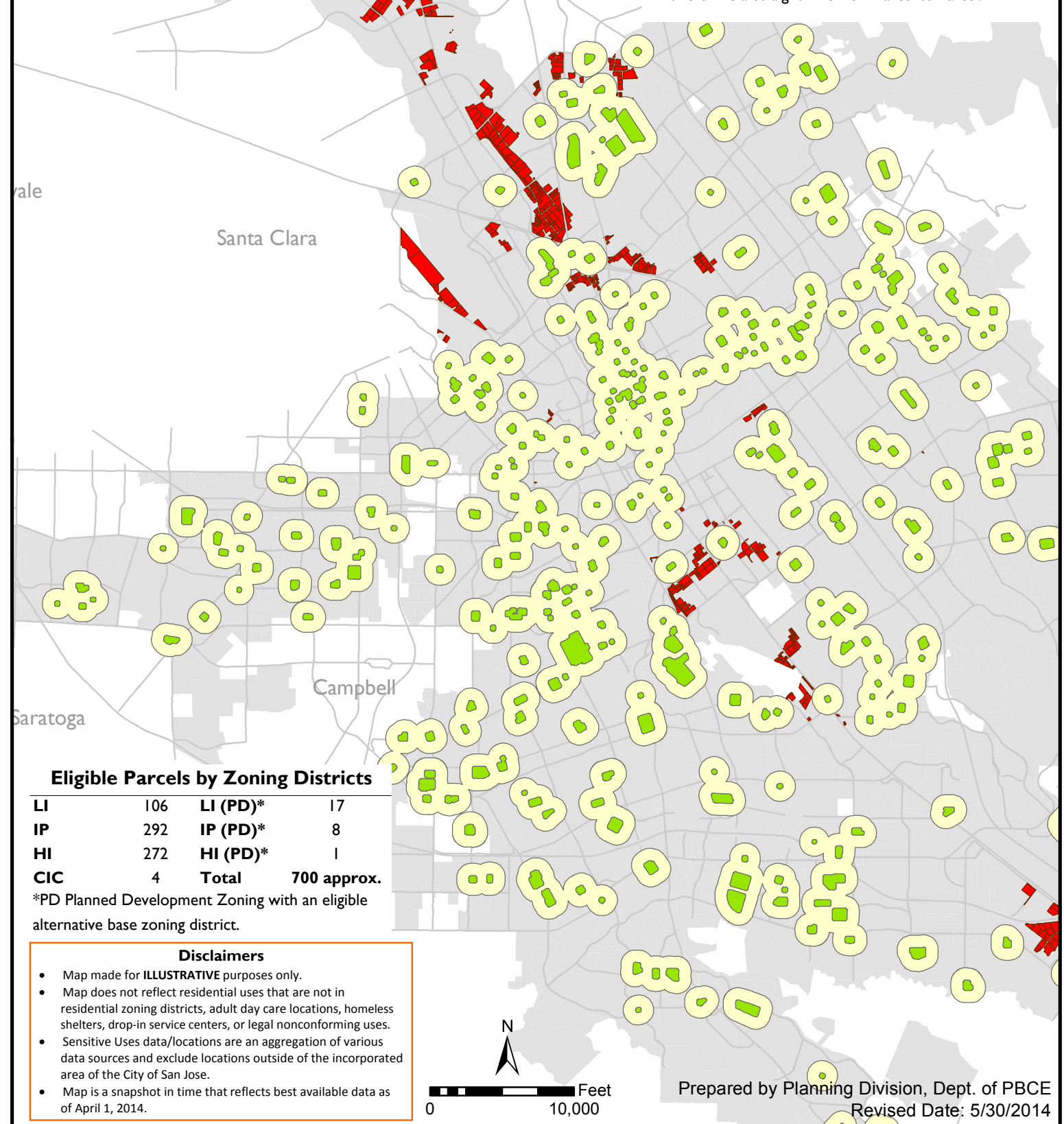
- Eligible Parcels in CIC, LI, HI, DC, IP Zoning Districts
- Religious Assembly 150 foot Buffer
- Religious Assembly 1000 foot Buffer

### Staff Recommendation with Rocha Memo

Rehabilitation Centers (500 Feet Buffer)\*  
 Residential Uses (150 Feet Buffer)\*  
 Places of Religious Assembly (1,000 Feet Buffer)\*

Excludes Parcels Within: North San José Industrial  
 Core Area and 150 ft buffer, Zones 1,3,4 of Edenvale  
 Area Development Policy.

\*Buffers Are a Straight Line from Parcel to Parcel.



#### Eligible Parcels by Zoning Districts

LI	106	LI (PD)*	17
IP	292	IP (PD)*	8
HI	272	HI (PD)*	1
CIC	4	<b>Total</b>	<b>700 approx.</b>

\*PD Planned Development Zoning with an eligible alternative base zoning district.

#### Disclaimers

- Map made for **ILLUSTRATIVE** purposes only.
- Map does not reflect residential uses that are not in residential zoning districts, adult day care locations, homeless shelters, drop-in service centers, or legal nonconforming uses.
- Sensitive Uses data/locations are an aggregation of various data sources and exclude locations outside of the incorporated area of the City of San Jose.
- Map is a snapshot in time that reflects best available data as of April 1, 2014.