

# Meeting Agenda

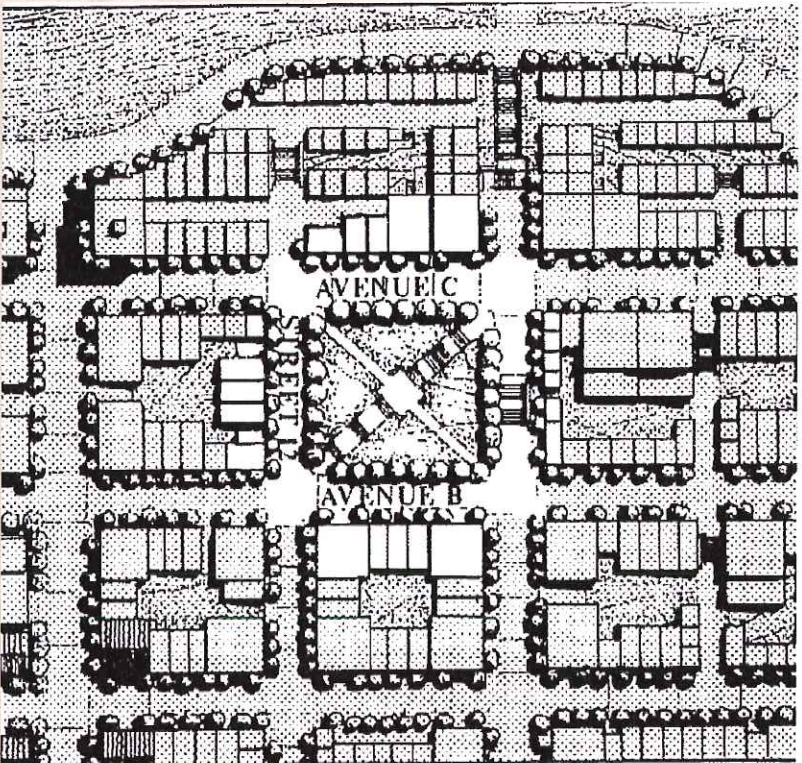
- Welcome & Introductions
- Project Overview
  - Communications Hill Specific Plan
  - Proposed Land Plan
- Project Architecture
- Public Realm
- Transportation
- Process & Schedule
- Questions & Answers



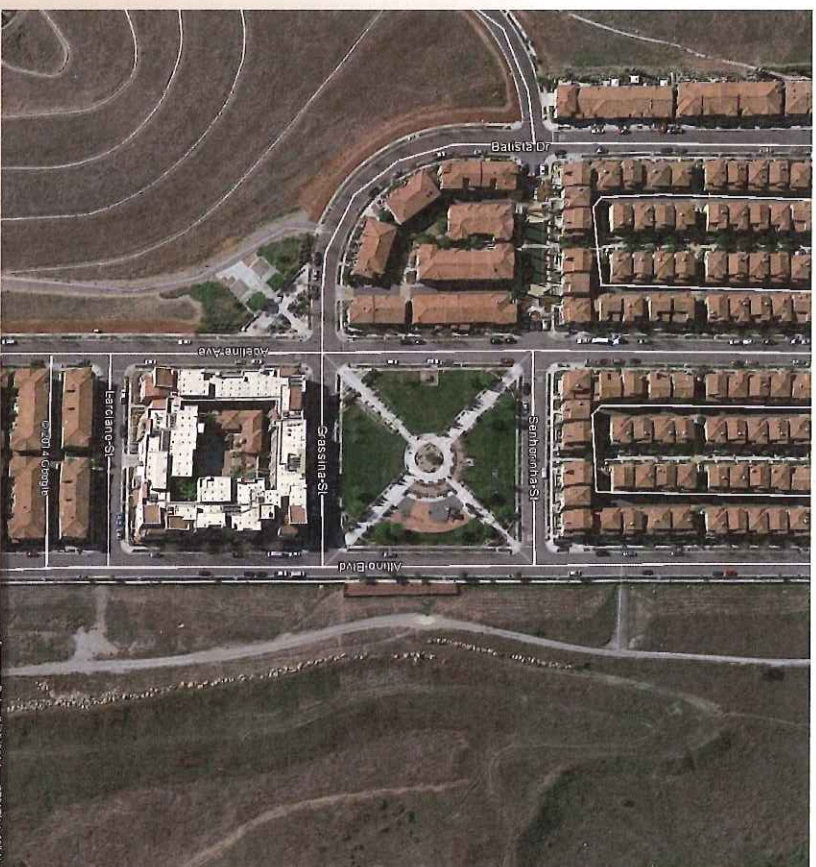




# Communications Hill Specific Plan - 1992



Vieira Park









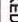
# Communications Hill Specific Plan

- Build on unique sense of place
- Maximize views and vistas
- Provide a diversity of housing types
- Create an urban neighborhood with village center, parks, plazas, trails, open space, school and playfields
- Link to multi-modal public transportation
- Facilitate industrial development



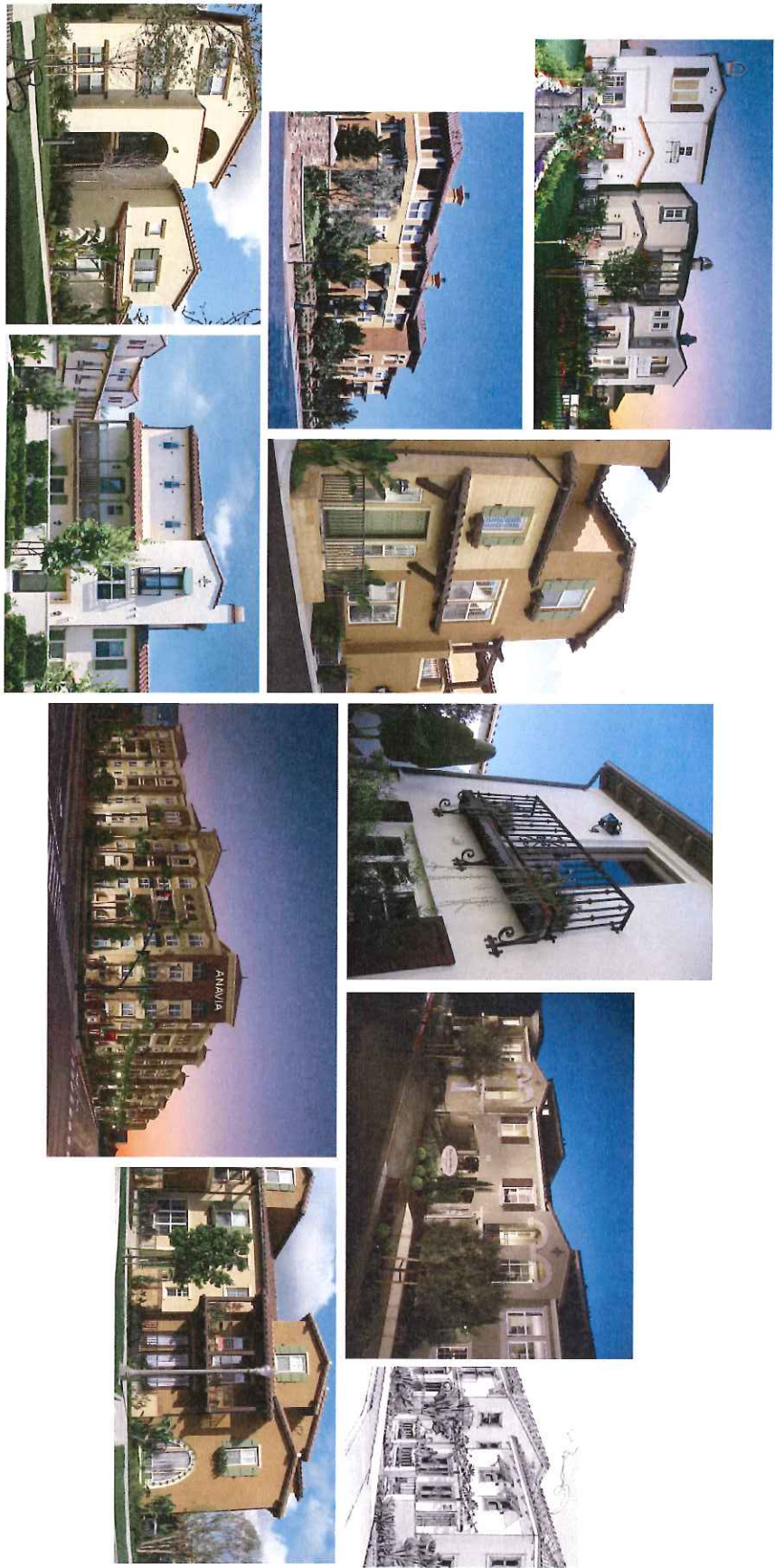


**LEGEND:**

	ROWHOMES
	DETACHED TOWNHOMES
	ATTACHED TOWNHOMES
	RESIDENTIAL PODIUM
	MIXED-USE PODIUM



COMMUNICATIONS HILL  
SAN JOSE, CALIFORNIA



TRADITIONAL MEDITERRANEAN

COMMUNICATIONS HILL



PROJECT NO.	001
DATE	01/11/11
DESIGNED BY	DAHLIN STONE
CHECKED BY	DAHLIN STONE
DATE	01/11/11
SCALE	AS SHOWN





COMMUNICATIONS HILL  
 SAN JOSE, CALIFORNIA



CONTEMPORARY MODERN



THE GILZARDO PARTNERSHIP, INC.  
 Landscape Architects - Land Planners

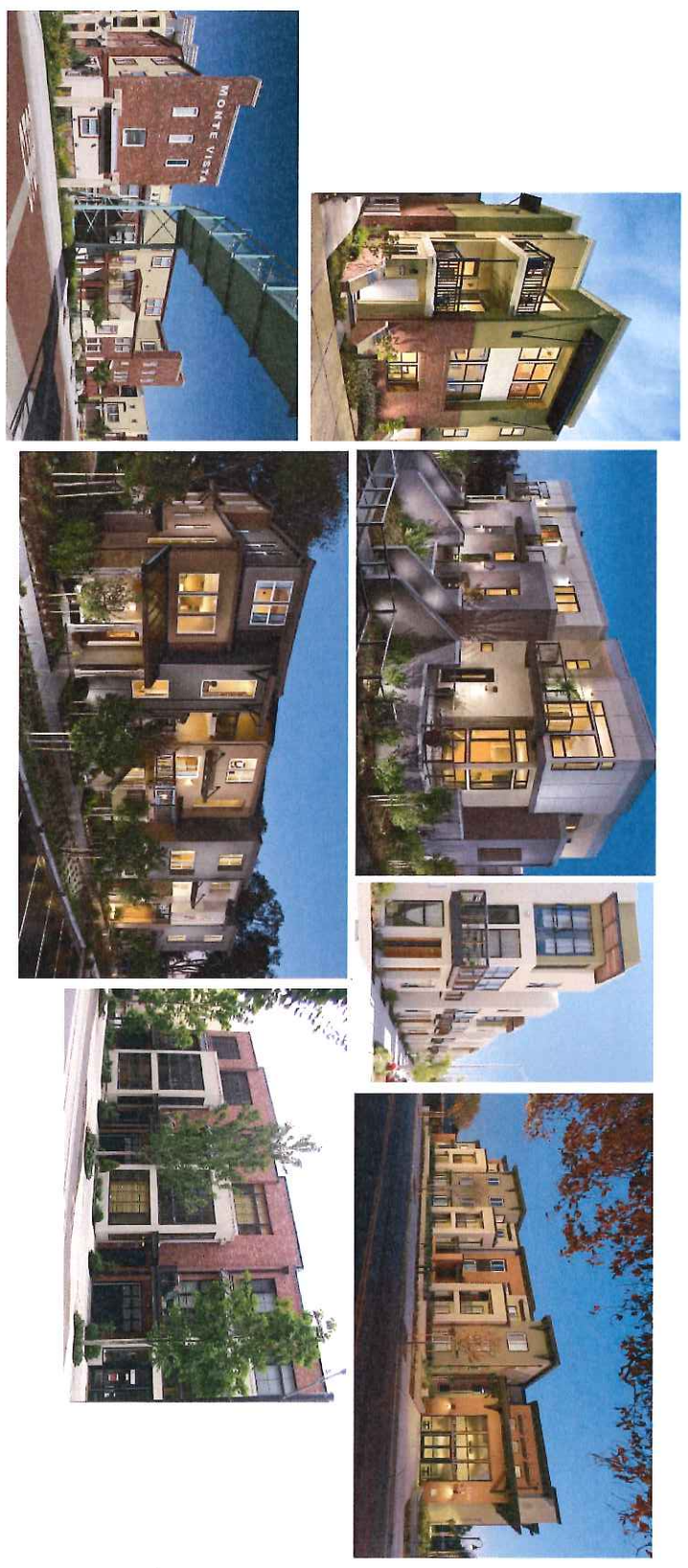


COMMUNICATIONS HILL

NO. DATE	DESCRIPTION	PROJECT NO.	PROJECT
		OWNER'S NO.	
		OWNER'S BR.	
		OWNER'S BR.	
		DATE	REVISION/11.2012
		SCALE	



COMMUNICATIONS HILL  
SAN JOSE, CALIFORNIA



INDUSTRIAL MODERN

COMMUNICATIONS HILL



NO.	DATE	DESCRIPTION	PROCESSED BY	2017/01/11
			DESIGNED BY	
			CHECKED BY	
			DATE	REVISION/REV. 1.3/2017
			SCALE	













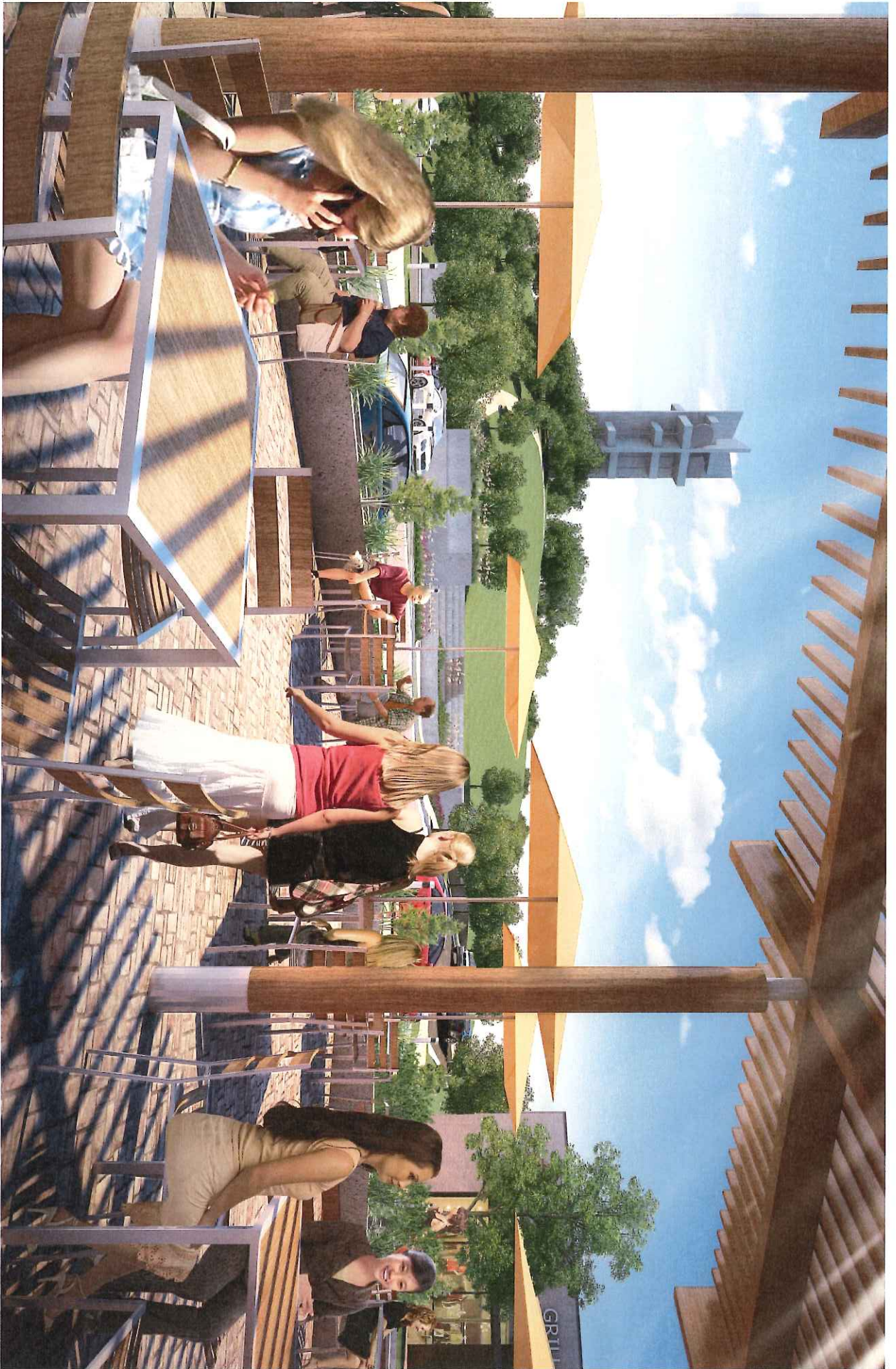








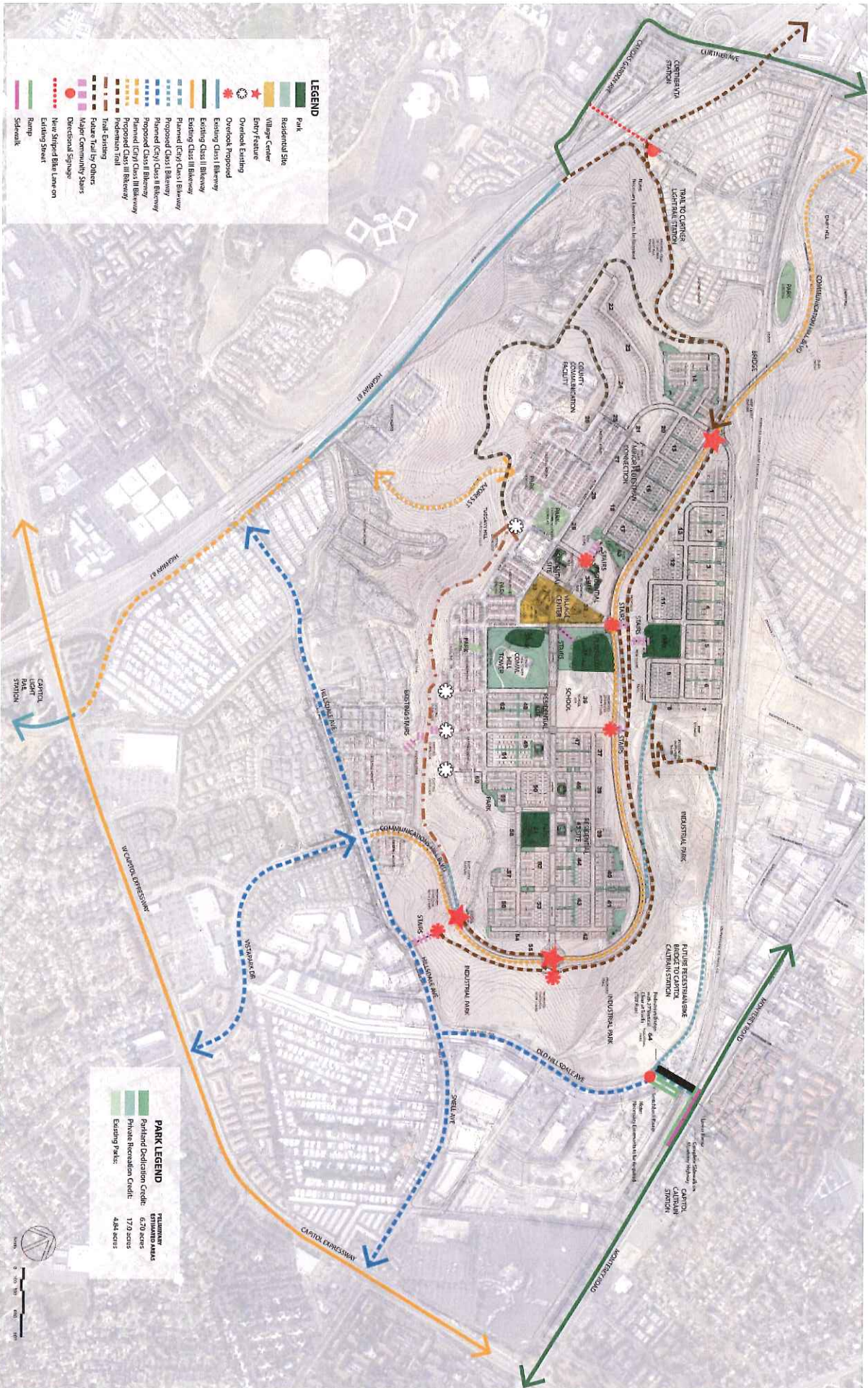




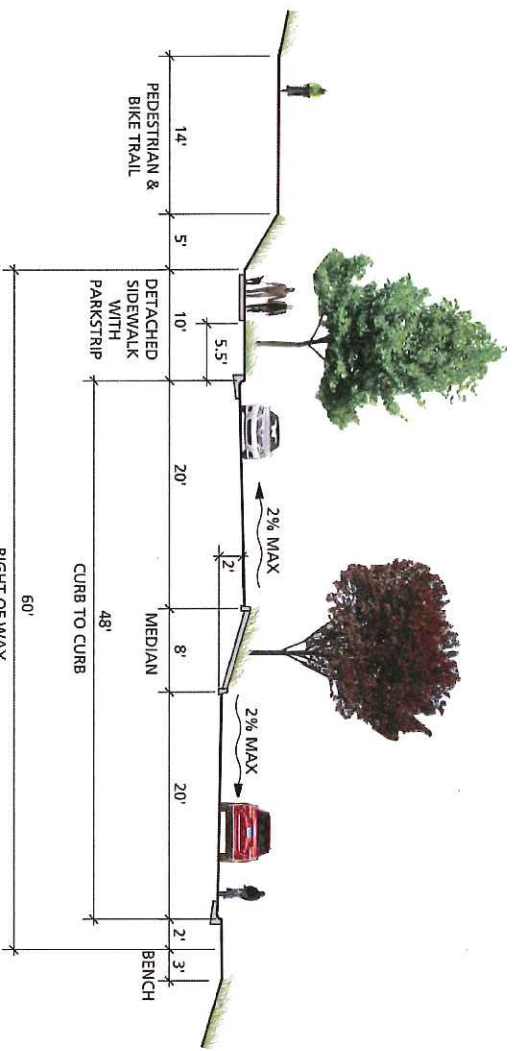




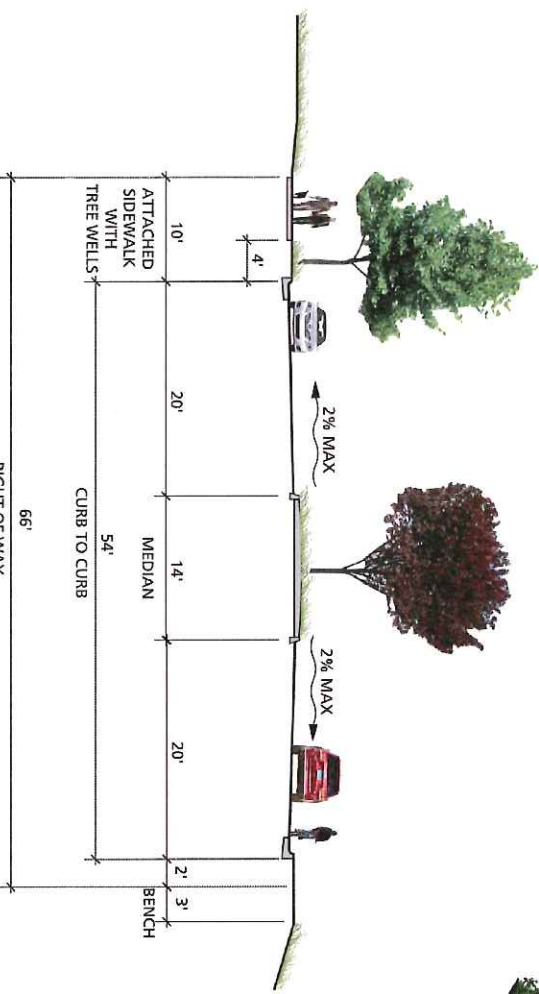




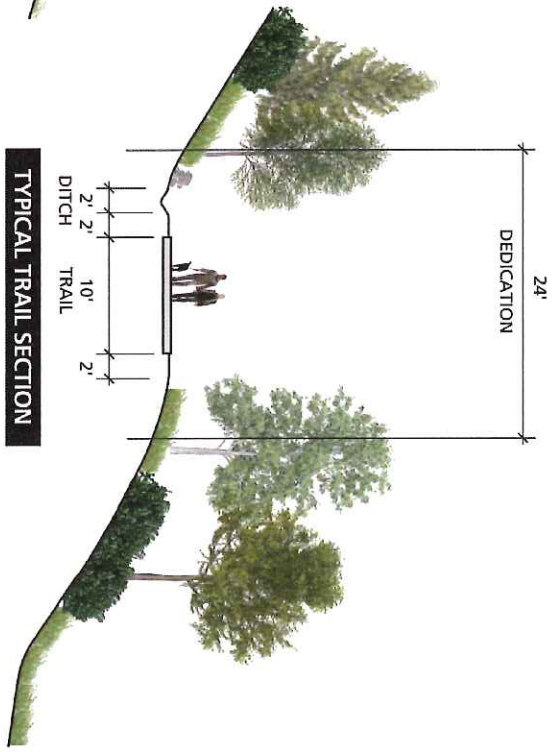




**COMMUNICATIONS HILL BLVD SECTION AT EAST ENTRY**



**TYPICAL COMMUNICATIONS HILL BLVD SECTION**



**TYPICAL TRAIL SECTION**







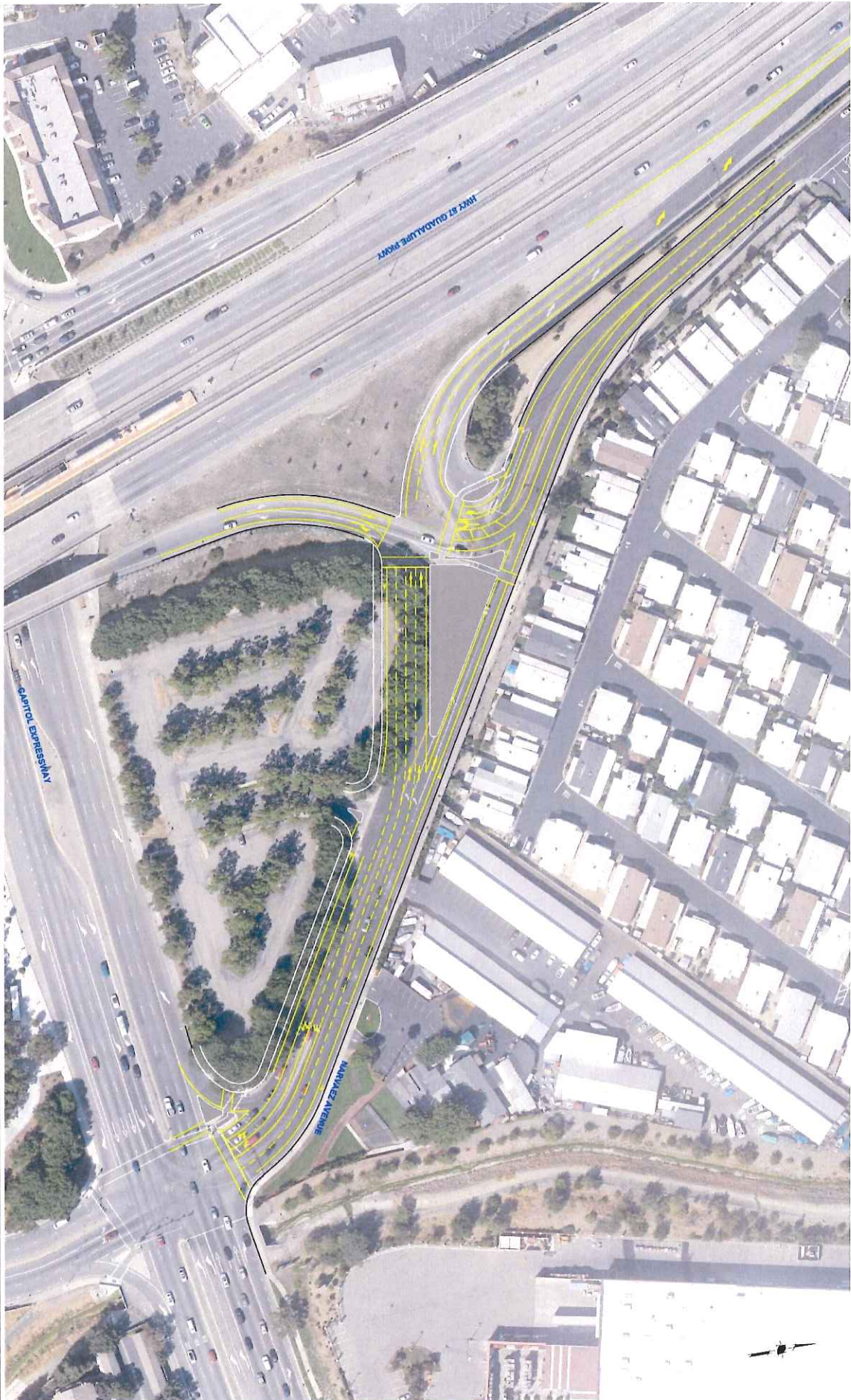


**COMMUNICATIONS HILL**  
 San Jose, California

NO.	DESCRIPTION	DATE
1	PRELIMINARY	10/15/08
2	REVISED	11/10/08
3	REVISED	12/15/08
4	REVISED	01/15/09
5	REVISED	02/15/09
6	REVISED	03/15/09
7	REVISED	04/15/09
8	REVISED	05/15/09
9	REVISED	06/15/09
10	REVISED	07/15/09
11	REVISED	08/15/09
12	REVISED	09/15/09
13	REVISED	10/15/09
14	REVISED	11/15/09
15	REVISED	12/15/09
16	REVISED	01/15/10
17	REVISED	02/15/10
18	REVISED	03/15/10
19	REVISED	04/15/10
20	REVISED	05/15/10
21	REVISED	06/15/10
22	REVISED	07/15/10
23	REVISED	08/15/10
24	REVISED	09/15/10
25	REVISED	10/15/10
26	REVISED	11/15/10
27	REVISED	12/15/10
28	REVISED	01/15/11
29	REVISED	02/15/11
30	REVISED	03/15/11
31	REVISED	04/15/11
32	REVISED	05/15/11
33	REVISED	06/15/11
34	REVISED	07/15/11
35	REVISED	08/15/11
36	REVISED	09/15/11
37	REVISED	10/15/11
38	REVISED	11/15/11
39	REVISED	12/15/11
40	REVISED	01/15/12
41	REVISED	02/15/12
42	REVISED	03/15/12
43	REVISED	04/15/12
44	REVISED	05/15/12
45	REVISED	06/15/12
46	REVISED	07/15/12
47	REVISED	08/15/12
48	REVISED	09/15/12
49	REVISED	10/15/12
50	REVISED	11/15/12
51	REVISED	12/15/12
52	REVISED	01/15/13
53	REVISED	02/15/13
54	REVISED	03/15/13
55	REVISED	04/15/13
56	REVISED	05/15/13
57	REVISED	06/15/13
58	REVISED	07/15/13
59	REVISED	08/15/13
60	REVISED	09/15/13
61	REVISED	10/15/13
62	REVISED	11/15/13
63	REVISED	12/15/13
64	REVISED	01/15/14
65	REVISED	02/15/14
66	REVISED	03/15/14
67	REVISED	04/15/14
68	REVISED	05/15/14
69	REVISED	06/15/14
70	REVISED	07/15/14
71	REVISED	08/15/14
72	REVISED	09/15/14
73	REVISED	10/15/14
74	REVISED	11/15/14
75	REVISED	12/15/14
76	REVISED	01/15/15
77	REVISED	02/15/15
78	REVISED	03/15/15
79	REVISED	04/15/15
80	REVISED	05/15/15
81	REVISED	06/15/15
82	REVISED	07/15/15
83	REVISED	08/15/15
84	REVISED	09/15/15
85	REVISED	10/15/15
86	REVISED	11/15/15
87	REVISED	12/15/15
88	REVISED	01/15/16
89	REVISED	02/15/16
90	REVISED	03/15/16
91	REVISED	04/15/16
92	REVISED	05/15/16
93	REVISED	06/15/16
94	REVISED	07/15/16
95	REVISED	08/15/16
96	REVISED	09/15/16
97	REVISED	10/15/16
98	REVISED	11/15/16
99	REVISED	12/15/16
100	REVISED	01/15/17



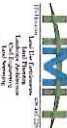
COMMUNICATIONS HILL  
San Jose, California



Project Data	
DATE	08/11/2011
SCALE	AS SHOWN
PROJECT	AREA DEVELOPMENT POLICY IMPROVEMENTS
CLIENT	KB HOME
DESIGNER	HNTB
APPROVED BY	[Signature]

NARVAEZ AVE AND HWY 87  
AREA DEVELOPMENT POLICY IMPROVEMENTS





COMMUNICATIONS HILL  
San Jose, California

NO.	DESCRIPTION	DATE
1	PRELIMINARY	08/11/11
2	REVISED	09/15/11
3	REVISED	10/10/11
4	REVISED	11/02/11
5	REVISED	11/02/11
6	REVISED	11/02/11
7	REVISED	11/02/11
8	REVISED	11/02/11
9	REVISED	11/02/11
10	REVISED	11/02/11
11	REVISED	11/02/11
12	REVISED	11/02/11
13	REVISED	11/02/11
14	REVISED	11/02/11
15	REVISED	11/02/11
16	REVISED	11/02/11
17	REVISED	11/02/11
18	REVISED	11/02/11
19	REVISED	11/02/11
20	REVISED	11/02/11
21	REVISED	11/02/11
22	REVISED	11/02/11
23	REVISED	11/02/11
24	REVISED	11/02/11
25	REVISED	11/02/11
26	REVISED	11/02/11
27	REVISED	11/02/11
28	REVISED	11/02/11
29	REVISED	11/02/11
30	REVISED	11/02/11
31	REVISED	11/02/11
32	REVISED	11/02/11
33	REVISED	11/02/11
34	REVISED	11/02/11
35	REVISED	11/02/11
36	REVISED	11/02/11
37	REVISED	11/02/11
38	REVISED	11/02/11
39	REVISED	11/02/11
40	REVISED	11/02/11
41	REVISED	11/02/11
42	REVISED	11/02/11
43	REVISED	11/02/11
44	REVISED	11/02/11
45	REVISED	11/02/11
46	REVISED	11/02/11
47	REVISED	11/02/11
48	REVISED	11/02/11
49	REVISED	11/02/11
50	REVISED	11/02/11
51	REVISED	11/02/11
52	REVISED	11/02/11
53	REVISED	11/02/11
54	REVISED	11/02/11
55	REVISED	11/02/11
56	REVISED	11/02/11
57	REVISED	11/02/11
58	REVISED	11/02/11
59	REVISED	11/02/11
60	REVISED	11/02/11
61	REVISED	11/02/11
62	REVISED	11/02/11
63	REVISED	11/02/11
64	REVISED	11/02/11
65	REVISED	11/02/11
66	REVISED	11/02/11
67	REVISED	11/02/11
68	REVISED	11/02/11
69	REVISED	11/02/11
70	REVISED	11/02/11
71	REVISED	11/02/11
72	REVISED	11/02/11
73	REVISED	11/02/11
74	REVISED	11/02/11
75	REVISED	11/02/11
76	REVISED	11/02/11
77	REVISED	11/02/11
78	REVISED	11/02/11
79	REVISED	11/02/11
80	REVISED	11/02/11
81	REVISED	11/02/11
82	REVISED	11/02/11
83	REVISED	11/02/11
84	REVISED	11/02/11
85	REVISED	11/02/11
86	REVISED	11/02/11
87	REVISED	11/02/11
88	REVISED	11/02/11
89	REVISED	11/02/11
90	REVISED	11/02/11
91	REVISED	11/02/11
92	REVISED	11/02/11
93	REVISED	11/02/11
94	REVISED	11/02/11
95	REVISED	11/02/11
96	REVISED	11/02/11
97	REVISED	11/02/11
98	REVISED	11/02/11
99	REVISED	11/02/11
100	REVISED	11/02/11

CURTNER AVE AND HWY 87  
AREA DEVELOPMENT POLICY IMPROVEMENTS



# Transportation

- Studied
  - 82 signalized intersections – 4 significant impacts
  - 56 freeway segments – 12 freeway impacts
- Area Development Policy
  - 2 freeway onramp improvements
  - Curtner Avenue improvements
  - Multi-modal improvements – trails, Caltrain connection



# Process and Timeline

- FEIR & PC staff report – to be posted on-line 8/29
- Public Meetings
  - September 3, Parks & Rec. Commission status report
  - September 10, Planning Commission public hearing
  - September 23, City Council initiates annexation
  - September 30, City Council public hearing
  - November 18, City Council orders annexation
- Begin construction Spring 2015