

---

## ATTACHMENT 2

### Historical Aerial Photographs



**Gas Station**

3110 Mount Vista Drive  
San Jose, CA 95127

Inquiry Number: 4304843.5

May 28, 2015



## The EDR Aerial Photo Decade Package



6 Armstrong Road, 4th Floor  
Shelton, Connecticut 06484  
Toll Free: 800.352.0050  
[www.edrnet.com](http://www.edrnet.com)

# EDR Aerial Photo Decade Package

Environmental Data Resources, Inc. (EDR) Aerial Photo Decade Package is a screening tool designed to assist environmental professionals in evaluating potential liability on a target property resulting from past activities. EDR's professional researchers provide digitally reproduced historical aerial photographs, and when available, provide one photo per decade.

**When delivered electronically by EDR, the aerial photo images included with this report are for ONE TIME USE ONLY. Further reproduction of these aerial photo images is prohibited without permission from EDR. For more information contact your EDR Account Executive.**

***Thank you for your business.***  
Please contact EDR at 1-800-352-0050  
with any questions or comments.

## **Disclaimer - Copyright and Trademark Notice**

This Report contains certain information obtained from a variety of public and other sources reasonably available to Environmental Data Resources, Inc. It cannot be concluded from this Report that coverage information for the target and surrounding properties does not exist from other sources. **NO WARRANTY EXPRESSED OR IMPLIED, IS MADE WHATSOEVER IN CONNECTION WITH THIS REPORT. ENVIRONMENTAL DATA RESOURCES, INC. SPECIFICALLY DISCLAIMS THE MAKING OF ANY SUCH WARRANTIES, INCLUDING WITHOUT LIMITATION, MERCHANTABILITY OR FITNESS FOR A PARTICULAR USE OR PURPOSE. ALL RISK IS ASSUMED BY THE USER. IN NO EVENT SHALL ENVIRONMENTAL DATA RESOURCES, INC. BE LIABLE TO ANYONE, WHETHER ARISING OUT OF ERRORS OR OMISSIONS, NEGLIGENCE, ACCIDENT OR ANY OTHER CAUSE, FOR ANY LOSS OF DAMAGE, INCLUDING, WITHOUT LIMITATION, SPECIAL, INCIDENTAL, CONSEQUENTIAL, OR EXEMPLARY DAMAGES. ANY LIABILITY ON THE PART OF ENVIRONMENTAL DATA RESOURCES, INC. IS STRICTLY LIMITED TO A REFUND OF THE AMOUNT PAID FOR THIS REPORT.** Purchaser accepts this Report AS IS. Any analyses, estimates, ratings, environmental risk levels or risk codes provided in this Report are provided for illustrative purposes only, and are not intended to provide, nor should they be interpreted as providing any facts regarding, or prediction or forecast of, any environmental risk for any property. Only a Phase I Environmental Site Assessment performed by an environmental professional can provide information regarding the environmental risk for any property. Additionally, the information provided in this Report is not to be construed as legal advice.

Copyright 2015 by Environmental Data Resources, Inc. All rights reserved. Reproduction in any media or format, in whole or in part, of any report or map of Environmental Data Resources, Inc., or its affiliates, is prohibited without prior written permission.

EDR and its logos (including Sanborn and Sanborn Map) are trademarks of Environmental Data Resources, Inc. or its affiliates. All other trademarks used herein are the property of their respective owners.

**Date EDR Searched Historical Sources:**

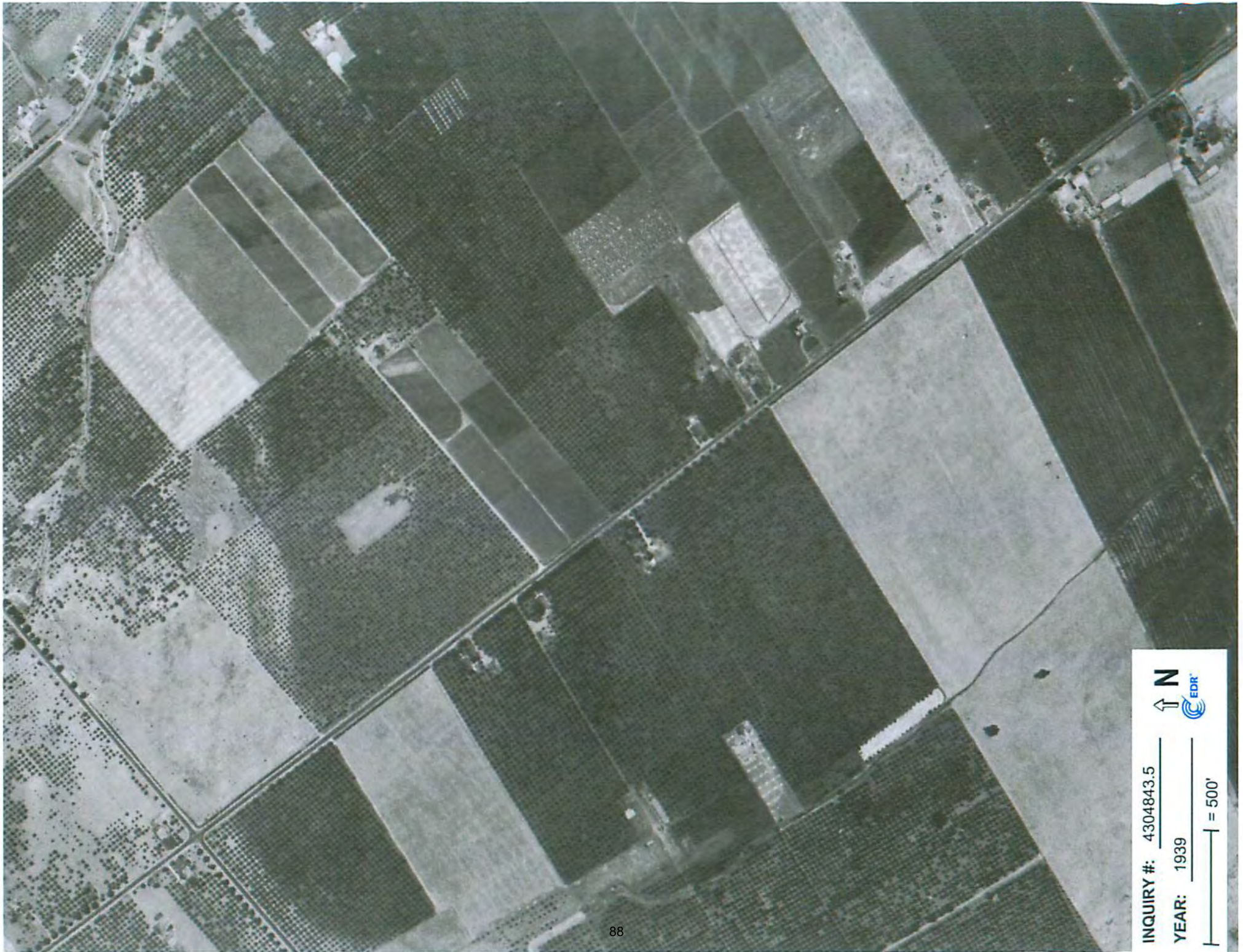
Aerial Photography May 28, 2015

**Target Property:**

3110 Mount Vista Drive

San Jose, CA 95127

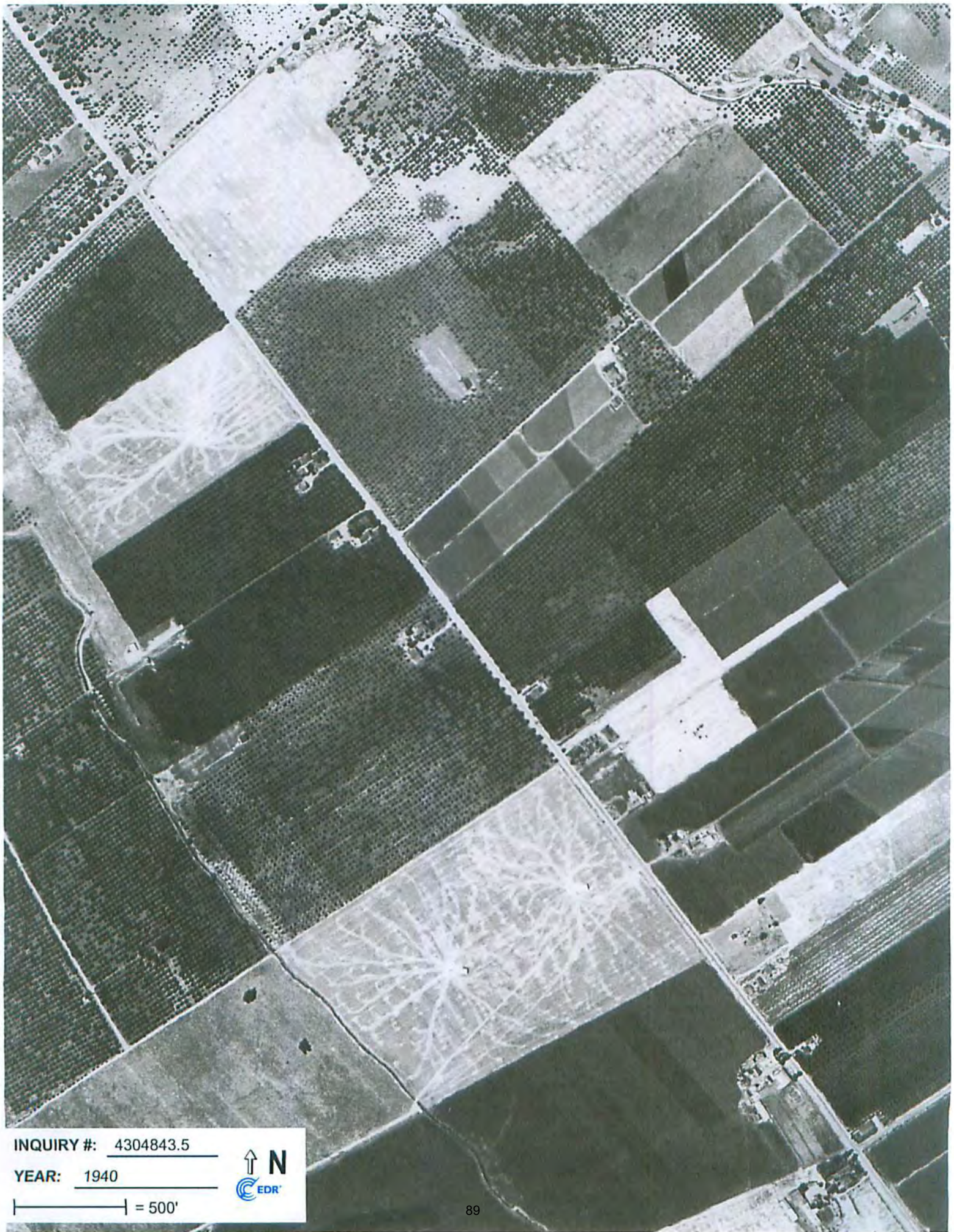
<u><i>Year</i></u>	<u><i>Scale</i></u>	<u><i>Details</i></u>	<u><i>Source</i></u>
1939	Aerial Photograph. Scale: 1"=500'	Flight Year: 1939	USGS
1940	Aerial Photograph. Scale: 1"=500'	Flight Year: 1940	USGS
1948	Aerial Photograph. Scale: 1"=500'	Flight Year: 1948	USGS
1950	Aerial Photograph. Scale: 1"=500'	Flight Year: 1950	USGS
1956	Aerial Photograph. Scale: 1"=500'	Flight Year: 1956	USGS
1968	Aerial Photograph. Scale: 1"=500'	Flight Year: 1968	USGS
1974	Aerial Photograph. Scale: 1"=500'	Flight Year: 1974	USGS
1982	Aerial Photograph. Scale: 1"=500'	Flight Year: 1982	USGS
1998	Aerial Photograph. Scale: 1"=500'	Flight Year: 1998 Best Copy Available from original source	USGS
1998	Aerial Photograph. Scale: 1"=500'	/DOQQ - acquisition dates: 1998	USGS/DOQQ
2005	Aerial Photograph. Scale: 1"=500'	Flight Year: 2005	USDA/NAIP
2006	Aerial Photograph. Scale: 1"=500'	Flight Year: 2006	USDA/NAIP
2009	Aerial Photograph. Scale: 1"=500'	Flight Year: 2009	USDA/NAIP
2010	Aerial Photograph. Scale: 1"=500'	Flight Year: 2010	USDA/NAIP
2012	Aerial Photograph. Scale: 1"=500'	Flight Year: 2012	USDA/NAIP



INQUIRY #: 4304843.5  
YEAR: 1939

↑ N  
↑ C EDR

— = 500'

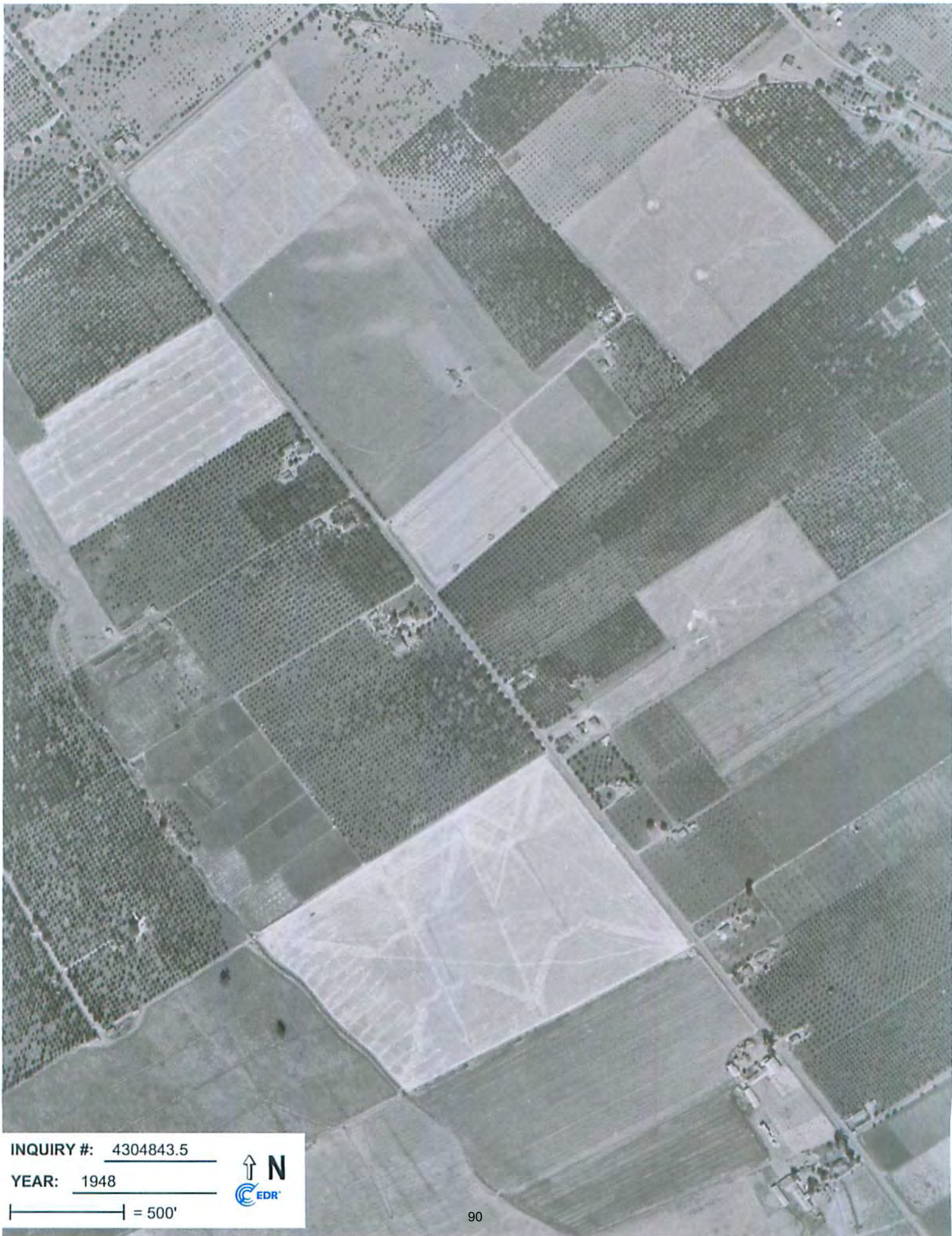


INQUIRY #: 4304843.5

YEAR: 1940

| = 500'





INQUIRY #: 4304843.5

YEAR: 1948

 = 500'





INQUIRY #: 4304843.5

YEAR: 1950

 = 500'







INQUIRY #: 4304843.5

YEAR: 1956



| = 500'



INQUIRY #: 4304843.5

YEAR: 1968

| = 500'





INQUIRY #: 4304843.5

YEAR: 1974




| = 500'



INQUIRY #: 4304843.5

YEAR: 1982

 = 500'





INQUIRY #: 4304843.5

YEAR: 1998

| = 500'





INQUIRY #: 4304843.5

YEAR: 2005

| = 500'





INQUIRY #: 4304843.5

YEAR: 2006

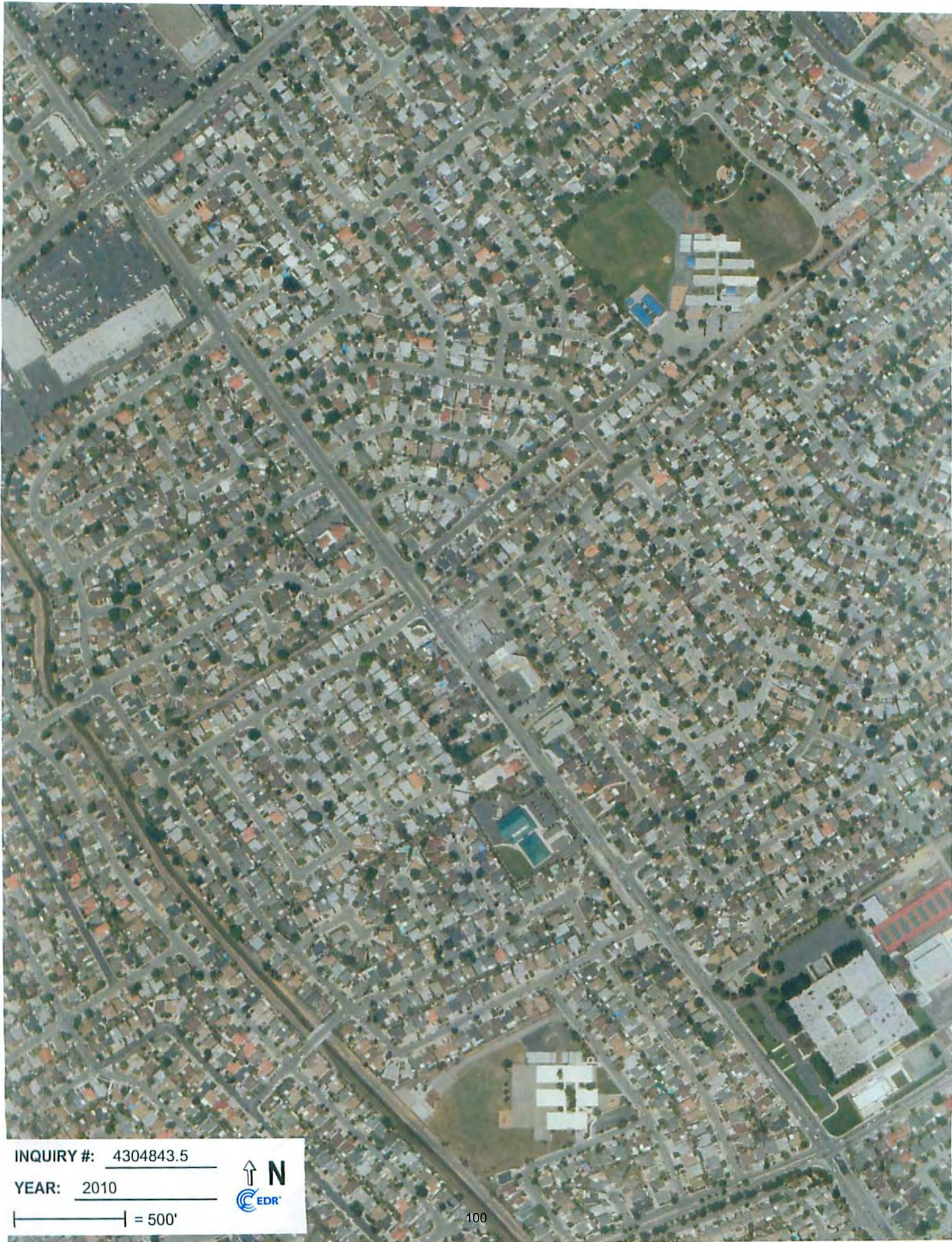
| = 500'





INQUIRY #: 4304843.5  
YEAR: 2009  
= 500'  
EDR  
N ↓





INQUIRY #: 4304843.5

YEAR: 2010



| = 500'



INQUIRY #: 4304843.5

YEAR: 2012

| = 500'

