

## SUMMARY

Meeting date: February 25, 2016

### Community Meeting #2, Kelley Park Master Plan Update

**The second community meeting and workshop served as both a review and overview of the Master Plan Update for the public and park neighbors in the City of San Jose.** The Master Plan Update is building on the existing Master Plan to update and focus on providing unified wayfinding and circulation hierarchy, enhancing existing facilities and making suggestions for undeveloped and under-used areas. Phasing and prioritization of future improvements will be a key consideration of the Master Plan Update.

The meeting began shortly past 6:30pm in the Okayama Room of the Leininger Center at Kelley Park; 133 people signed in but a head count indicated upwards of 165 attendees. Simultaneous translation was provided in Vietnamese and Spanish. Councilmember Tam Nguyen and Deputy Director Marybeth Harasz gave some introductory remarks including clarify that there is a separate programming feasibility study underway to review the needs of a potential Vietnamese Community Center. A brief overview of the project, meeting, and evening's agenda was given before a verbal and slide presentation. The presentation summarized project goals for the Master Plan Update, as well as a brief review of the park's history and site analysis. Results to date of the online survey which will be available through the end of March for additional feedback (survey is in English, Vietnamese, and Spanish), suggested changes to the under-utilized areas of Kelley Park, and draft approaches for enhancing overall park circulation were the focus of the presentation.

Before breaking into small discussion groups, there was a call for discussion and general comments followed the presentation, allowing meeting attendees to respond to the options presented for the varied park areas and amenities. There was some general confusion in the audience, many of whom had believed that the Master Plan Update meeting was focusing on a Vietnamese Community Center and/or the build out of the Vietnamese Cultural Heritage Garden and were frustrated to learn that the meeting was actually focused on the larger Master Plan Update project. There was vocal support for a Vietnamese Community Center. Councilmembers Tam Nguyen and Manh Nguyen both asked to speak to the community during which 2026 signed petitions were submitted in support of a Vietnamese Community Center along with over 80 businesses who had indicated that they need a place to meet. There were questions about the purpose of the meeting which was clarified to be the larger Master Plan Update process; however, it was acknowledged that there was some confusion as there were several overlapping and separate discussions and projects underway. The Master Plan Update project will likely slow down on progress to allow the Vietnamese Community Center programming study to

complete so that any potential impacts to the Master Plan Update could be reviewed and discussed before moving forward. Some residents expressed concern that the Master Plan Update was more than a community center and were concerned that the other issues would not receive attention. There was also concern about previous money spent on planning and design efforts that had little to show for it. Neighborhood needs and regional needs both need to be considered in the Master Plan Update.

Attendees were asked to then break into small groups of 3-10 people to discuss and fill out here questions that were posed. Many attendees came to support a community center and did not stay for the small group portion of the meeting. Ten groups, of different sizes, did participate and reviewed a summary table of the proposed changes presented during the workshop, and provided comments to the three questions. A summary of the responses for each question follows.

1. What other ideas do you have for making better use of the underutilized areas in Kelley Park?  
Quý vị có những ý kiến nào khác để xử dụng một cách thích nghi hơn những khu ít được chiếu cố trong Kelley Park?

Que otras ideas tiene usted para hacer un major uso de las areas menos utilizadas en el Parque Kelley?

*Responses:*

- » Leininger Center expand special events
- » Roberts Road development
- » Better define the path around the Disc Golf course and tie into the Coyote creek Trail
- » Sidewalks on Roberts Road for safety
- » Bathroom and picnic tables on Roberts Road
- » Install and open gates from Roberts Road to allow access away from Happy Hollow toward any features developed along Roberts Road
- » I'm interested in picnic area where we can gather and accommodate a variety of community members
- » Keep in mind that the "under-utilized areas" are often supporting wildlife, birds, and greenery that are appreciated by people – a form of use
- » Incorporate both nature and man-made structure
- » Build the Vietnamese American Community

2. What improvements are most important and why?  
Theo quý vị, những cải tiến nào quan trọng nhất? Tại sao?  
Cuales son las mejoras mas importantes para usted y porque?

*Responses*

- » Add more restrooms and improve signage
- » Reduce parking cost or make permits for specific parking lots at a lower cost – current cost is too high,
- » More bike areas parking to access Coyote Creek Trail
- » Make signage visible, improve parking access/charge
- » Add lighting for safety
- » Develop Roberts Road for picnic and community usage
- » Vietnamese Cultural Heritage Garden – because Vietnamese residents take 10 percent of the city population and they need to be recognized as a part of this growing city
- » Vietnamese Community Center – purpose to allow community gathering
- » Improve on waterway for non-motorized boat and canoe for recreational water enjoyment
- » Make the park accessible – more trails to walk to improve physical activities

3. What are your top four priorities for improvements to Kelley Park?  
Xin cho biết 4 sự cải tiến ưu tiên cho Kelley Park của quý vị.  
Cuales son sus cuatro prioridades principales para la mejora del parque Kelley?

*Responses*

- » Restrooms
- » Disc Golf
- » Leininger Center improvements
- » Roberts Road development
- » Enhance the Disc Golf course by planting new trees and bushes
- » Add drinking fountains and bike racks

- » Increase use of Community Center – more classes and special events
- » Increase use of area on Roberts Road
- » More picnic and group areas
- » Develop Roberts Road for the community
- » Improve signage, parking, lighting
- » Build out open areas with adequate staffing in mind
- » Develop according to greatest community need and service for the immediate access to the site,
- » Vietnamese Cultural Heritage Garden
- » Vietnamese Community Center
- » Play areas
- » Picnic areas
- » Designate certain areas for wildlife – no Frisbees, etc.
- » Clean up the creek corridor and keep it wild – lose the trash and degradation
- » Waterway
- » Homeless (removal)
- » Vietnamese Cultural Center
- » Academy of Science
- » Cost of parking
- » More restrooms

As part of the exercise, attendees were asked to note their top priorities in the table. In some cases, the choices were ranked and a number was given; in that case, the ranking is noted.

Area	Proposed Change	Place an X to Mark Your Group's Top 4 Priorities
Happy Hollow Park and Zoo	Expand to include Ranger (Batton) and Kelley Houses plus the area under the Bent Bridge and lower area behind Kelley House	3
Vietnamese Cultural Heritage Garden	Support planned Vietnamese Cultural Heritage Garden.	X,X,X
Agricultural District and Disc Golf Course	Expand orchard planting. Disc golf course retained intact.	2,1
Picnic Areas	New picnic area along Roberts Avenue. Expanded picnic along Senter Street. Expanded Family Circle group picnic areas near K2 parking lot. Look into making wifi available. Add water fountains.	3,X,X
History Park	Retained in current position.	
Amphitheater	Retained in current position with additional programming including fee and non-fee required programming.	3
Japanese Friendship Garden	Retained in current position.	
Play Areas	One small natural play area between Coyote Creek and Japanese Friendship Garden. New play area along Senter Road – think about need for fencing with speed on Senter. New play area along Roberts Avenue.	X,X
Coyote Creek and Trail	New crossing at Phelan Avenue Second crossing closer to Vietnamese Cultural Heritage Garden	4
Restrooms	Improve/expand Japanese Friendship Garden restroom, East parking lot. Add restrooms at any new cultural/community center, play areas especially by Leininger Center, at all parking lots, amphitheater (might be	1,2,X,X,2 Community Center

	accommodated with expanded restroom facility by Japanese Friendship Garden).	
Green Debris Center	Relocated to storage building by Orchard parking lot – need to find new place for train that is stored there	
Improved Edge Condition	Colorful planting and identity along Senter Road. Fence improvements along Roberts, Story, Senter, and Phelan and within park where separating uses – whether through replacement of chain link with wrought iron or steel fencing, artistic embellishments, or other improvements.	
Multi-modal Trails	Coyote Creek pedestrian and bicycle trail. Connector Trail to East Lot. Walking path with fitness nodes along Roberts Avenue. Trail between East Lot and Vietnamese Cultural Heritage Garden. Meandering trail network between Roberts Avenue and Coyote Creek Trail. Interim Three Creeks Trail to Coyote Creek Trail connection to be discussed. Provide 24/7 pedestrian and bike through park access using Bent Bridge	4,4
Non-vehicular Park Transit	Trolley with 4 stops: <ul style="list-style-type: none"> <li>• main entry to History Park off Phelan Avenue.</li> <li>• near the K2 parking lots.</li> <li>• near the K1 parking lot.</li> <li>• intersection of Senter Road and Alma Avenue.</li> </ul>	
Internal Train/Trolley	Reintroduce a train for internal park circulation	
Parking Lot Entrances	Gateway entry markers or trellises	
K2 Parking Lot	Look at removing train track and relocating picnic area to expand parking.	
Other? Describe	Parking costs too much, A dog park to be open daily	1
	Nature areas	

There was also a space for general comments:

- » We need the city to make the master plan spreading out in all social media: radio, TV, website, newspaper, Facebook...for all at stake parties and community.
- » Vietnamese Americans would like to ask San Jose City to provide us a Community Center; the same support that has been granted to other minorities community. As you have been aware, Vietnamese Americans have been in San Jose for more than 40 years. We are ranked as the second minority in San Jose.
- » The natural areas should be expanded so people can enjoy nature. Also, the disc golf area is not good for birds during the nesting season (Feb – Aug). Consider shrinking the course or removing it.
- » Conversation about Vietnamese Community Center was not addressed and is of large concern.

The comments received will be added to those comments received via the first community meeting, the Fall 2015 online surveys, and with the responses to the consolidated and translated online survey that is available via the City's Kelley Park website:

<http://www.sanjoseca.gov/facilities/Facility/Details/175> as the Master Plan Update moves forward.

The following are images from the meeting:





The slides from the workshop are included after this written summary along with a copy of the small group exercise.



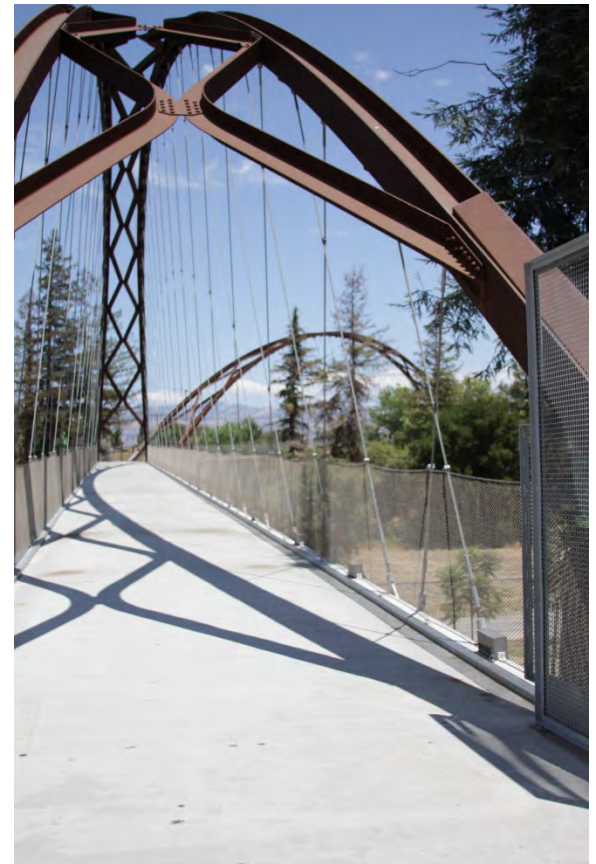


# ***Kelley Park Master Plan Update***

**Community Meeting #2: February 25, 2016**

# Project Contacts

- **City Staff**
  - *Yu-Wen Huang, Landscape Architect, PRNS  
(main point of contact: yu-wen.huang@sanjoseca.gov)*
  - *Al Smith, Associate Landscape Architect, PW*
- **Design Team Consultant**
  - *PlaceWorks*
    - *Melissa Erikson, Senior Associate,  
Landscape Architect*
    - *Sarah Sutton, Principal, Landscape  
Architect*
    - *Dave Sherman, Landscape Designer*



# Key Constituents

- City of San José Departments of Parks, Recreation & Neighborhood Services and Public Works with PlaceWorks
- Neighboring Residents
- Regional Park Users
- Stakeholders –  
Neighborhood Associations, HOAs, Happy Hollow Park & Zoo, Happy Hollow Foundation, History San José, San José – Okayama Sister City Organization, Japantown Business Association, Vietnamese Heritage Society, Silicon Valley Disc Golf Club, San José State University Athletics, Sharks Ice at San José, San José Giants, Yerba Buena High School, Council District 7, Parks & Recreation Commission, Keep Coyote Creek Beautiful, Santa Clara Valley Audubon Society, Preservation Action Council, San José Park Foundation, Sierra Club Loma Prieta Chapter





# *Tonight's Agenda*

- Project Goals
- History and Site Analysis Overview
- Online Survey
- Draft Approaches
- Small Group Discussion
- Summary of Responses
- Next Steps



# Project Goals

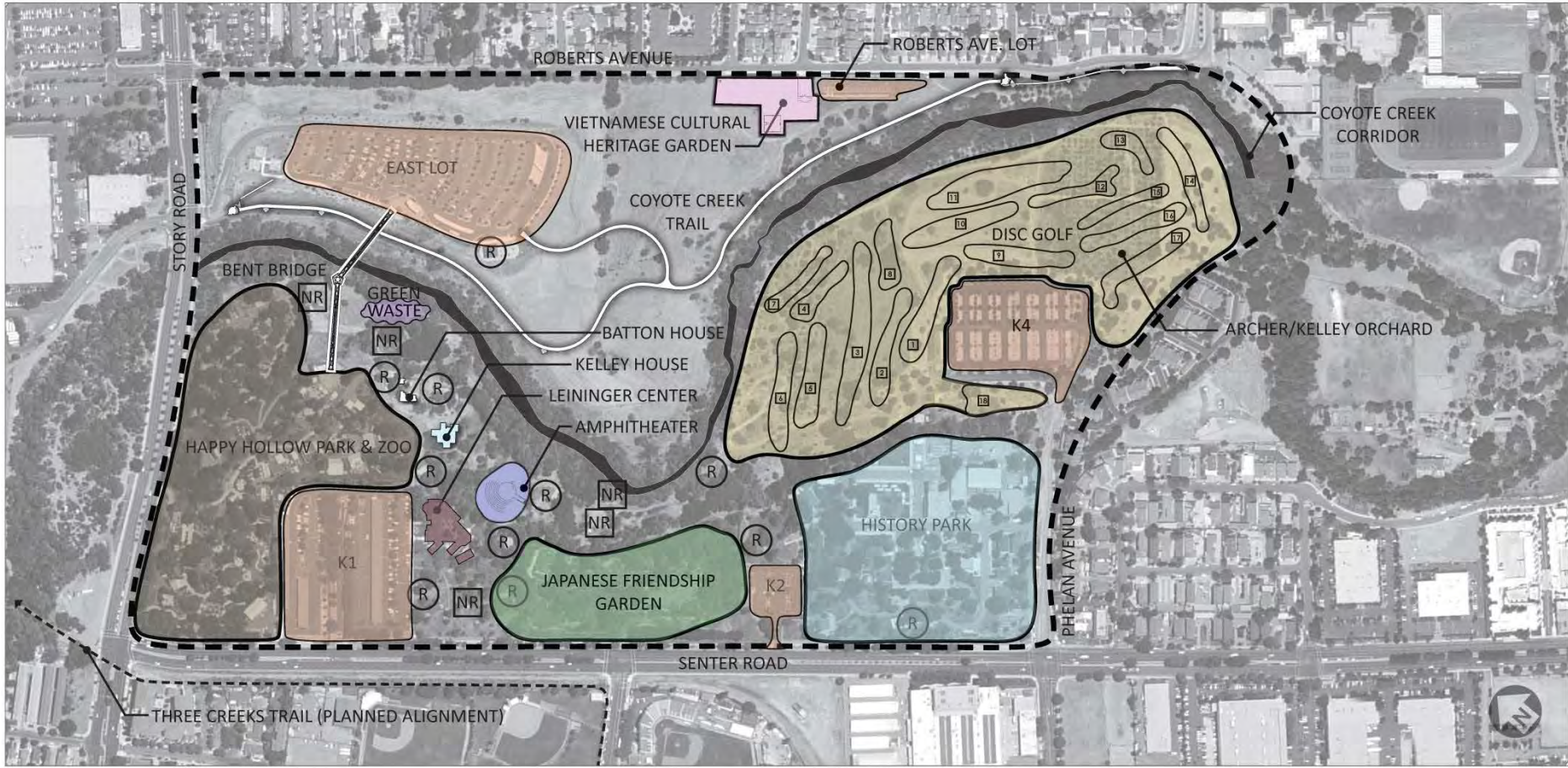
Provide a refined vision for Kelley Park, updating and building on the existing Master Plan, and focusing on creating:

- Unified wayfinding and circulation (signage)
- Enhanced entry experiences
- Recommendations for improvements including removal, additions, or relocation
- Enhancement to undeveloped and under-used areas





# Park Lands

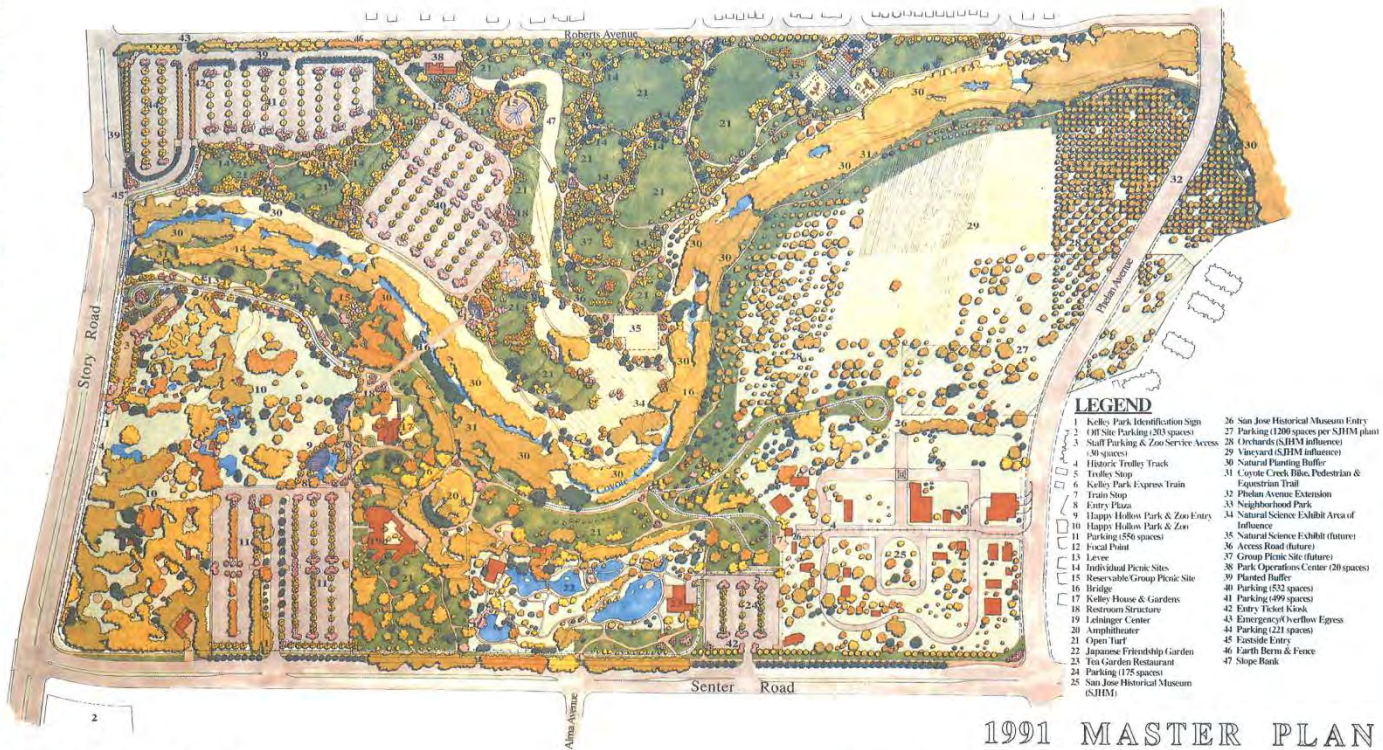


## EXISTING CONDITIONS



# Master Plan (1991)

1991 KELLEY PARK MASTER PLAN



**Kelley Park**  
City of San Jose

*R. Williams* DATE 6.26.95  
RALPH A. WILLIAMS, JR.  
DIRECTOR OF PUBLIC WORKS

*Ann Oppenheimer* DATE 6/16/95  
ANN OPPENHEIMER  
DIRECTOR OF CONVENTION, COLLEGE AND VISITOR SERVICES

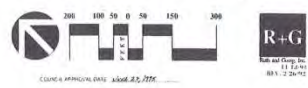
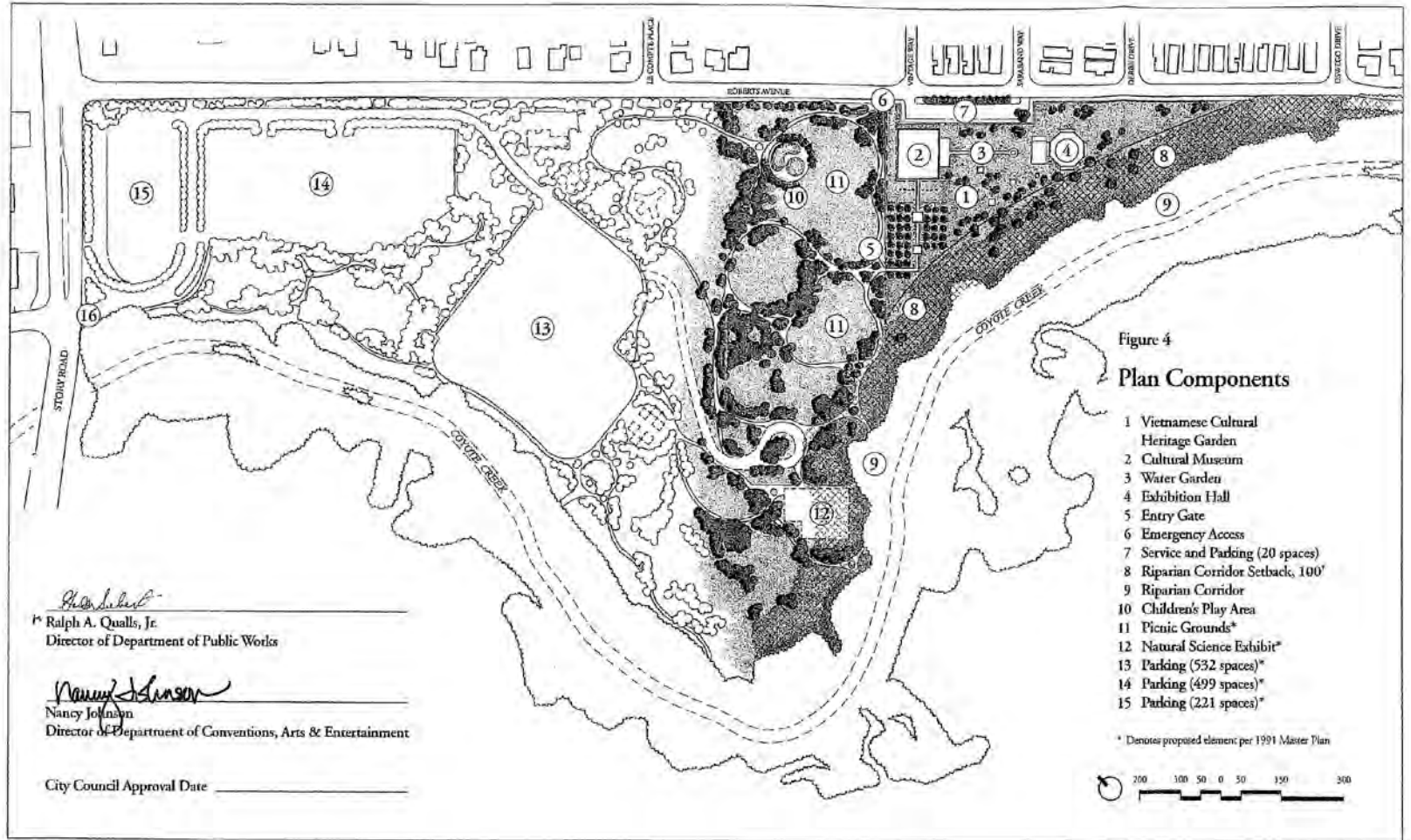


Figure 24

# Master Plan Amendment (2000)



## Kelley Park MASTER PLAN AMENDMENT & VIETNAMESE CULTURAL HERITAGE GARDEN MASTER PLAN








# Happy Hollow (2002)



<p>THE PORTICO GROUP</p>	<p>The Portico Group with Nolla Associates, Inc. Economics Research Associates Wynn Design Group, Inc. Dennis Duffy &amp; Associates, Inc. Keen Engineering, Inc. Oppenheim Lewis, Inc. ORCA Consulting Paladino &amp; Company, Inc. Debra Ellis, Architect and Horticulturalist Natural Systems International, L.L.C.</p>	<p><b>Bond Funded Plan</b> <b>Happy Hollow Park and Zoo</b> Parks Bond Project Program Refinement and Phase Strategy Plan San Jose, California June 2002</p>	<p>City of San Jose Public Works Parks &amp; Recreation Facilities Division</p>	<p>HAPPY HOLLOW SAN JOSE, CA</p>
----------------------------------	--	--	---	--------------------------------------

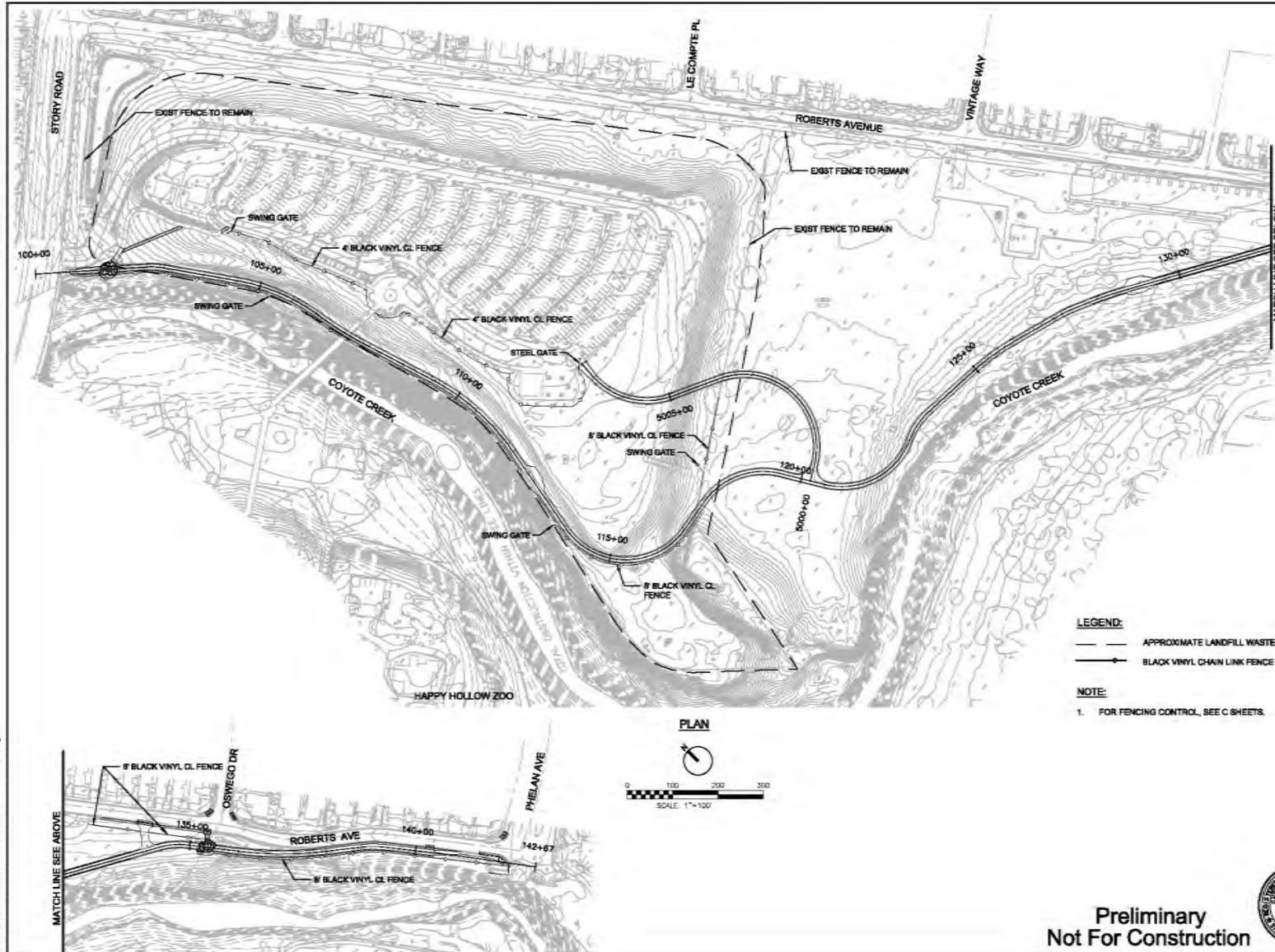
# Happy Hollow Long-Range (2002)



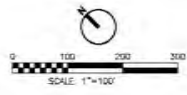
 <p><b>THE PORTICO GROUP</b></p>	<p><b>The Portico Group</b> with Nolla Associates, Inc. Economics Research Associates Wyatt Design Group, Inc. Davies Duffy &amp; Associates, Inc. Keen Engineering Inc. Oppenheim Lewis, Inc. ORCA Consulting Palastino &amp; Company, Inc. Debra Ellis, Architect and Horticulturalist Natural Systems International, LLC.</p>	<p><b>Long Range Plan</b> <b>Happy Hollow Park and Zoo</b> Parks Bond Project Program Refinement and Phase Strategy Plan San Jose, California June 2002</p>	<p>City of San Jose Public Works Parks &amp; Recreation Facilities Division</p>  
---	--	---	---



# Coyote Creek Trail (90% CDs 2015)



PLAN



**LEGEND:**  
 - - - - - APPROXIMATE LANDFILL WASTE LIMITS  
 ———— BLACK VINYL CHAIN LINK FENCE

**NOTE:**  
 1. FOR FENCING CONTROL, SEE C SHEETS.



DAVID SYKES  
 DIRECTOR OF PUBLIC WORKS

PROJECT TITLE:  
 5992-COYOTE CREEK TRAIL (STORY ROAD TO PHELAN AVENUE)

REF. MARK	DESCRIPTION
▲	
▲	
▲	
▲	
▲	
▲	

DATE: 12/08/14	DESIGNED BY: J. LINDSEY	DRAWN BY: C. BERNICHI
SCALE: 1"=100'	CHECKED BY: J. LINDSEY	DATE: 12/08/14
PROJECT MANAGER: JAVI PULGARIN		
CITY PROJECT NUMBER: 3992		
SHEET TITLE: OVERALL SITE AND FENCING PLAN		

OVERALL SITE AND FENCING PLAN

Preliminary  
 Not For Construction



SHEET NUMBER: SP-1

DATE: 12-08-14 13:14:31 CSP\_391.dwg



# Site Analysis



Coyote Creek



Group Picnic Area



Group Picnic and Back Entry to Zoo



Lawn Area



# Site Analysis



Group Picnic



Bike Parking by Zoo



Group Picnic



K1 Parking Entry



Amphitheater



# Site Analysis



Zoo Entry Plaza



Japanese Fountain



Leininger Center



Zoo Entry Plaza



Bent Bridge



# Site Analysis



View of Open Field from East Park Lot to Vietnamese Cultural Heritage Garden



Path by Leininger Center



Back Entry Path to Zoo



# Constraints and Opportunities

- Clarify and Improve Internal Circulation
- Unify Signage, Wayfinding and Branding
- Activate Edges
- Repurpose Underused Areas
- Reach Out to the Community
- Respect Resources
- Prioritize Efforts

*Map of underutilized space*



## Online Surveys

<http://www.sanjoseca.gov/facilities/Facility/Details/175>

- Online survey Fall 2015 (English only – 349 responses)
- Follow up to community workshop in online survey Fall 2015 (English only)
- Current online survey as of January 29, 2016
  - 188 responses and growing
  - Combines questions from first two surveys
  - English, Vietnamese, and Spanish
  - Responses to be combined with initial results
  - **Survey will be open for responses through March 31, 2016**
  - <https://www.surveymonkey.com/r/XR2BDRP>

# Online Survey (as of Feb. 17, 2016)

- Q1 What is your zip code?
- 65+ different zip codes
- Largest response from 95112
- Three zip codes tied for second largest response: 95111, 95121, and 95125
- Regional versus neighborhood park needs



## *Online Surveys*

- **Over 90% arrive by car**
- **Most use the park monthly – not daily**
- **Most use the park for 2 to 3 hours when they come**

## Online Surveys

- Q4 What do you like most about Kelley Park?
  - The respondents listed many different themes.
  - The largest response mentioned Happy Hollow.
  - Other frequent responses included:
    - disc golf
    - cultural gardens
    - History Park
    - open space/natural areas
    - variety of activities
    - trolleys
    - location

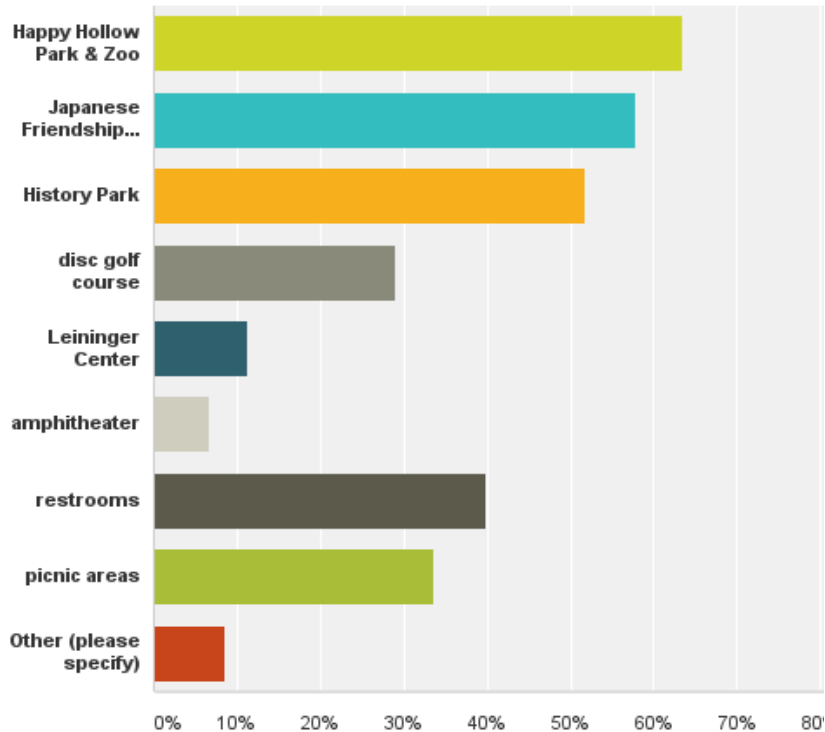
## Online Surveys

- Q5 What do you like least about Kelley Park?
  - Respondents listed many different themes
  - Most common negative responses:
    - homeless encampments
    - cost of parking
  - Other responses included:
    - poor path connections
    - nothing
    - lack of facilities/restrooms
    - poor security
    - lack of programming
    - maintenance/trash
    - burned building
    - drinking/crime
    - poor signage
    - park hours
    - disc golf
    - lack of playgrounds
    - park hours

# Online Surveys

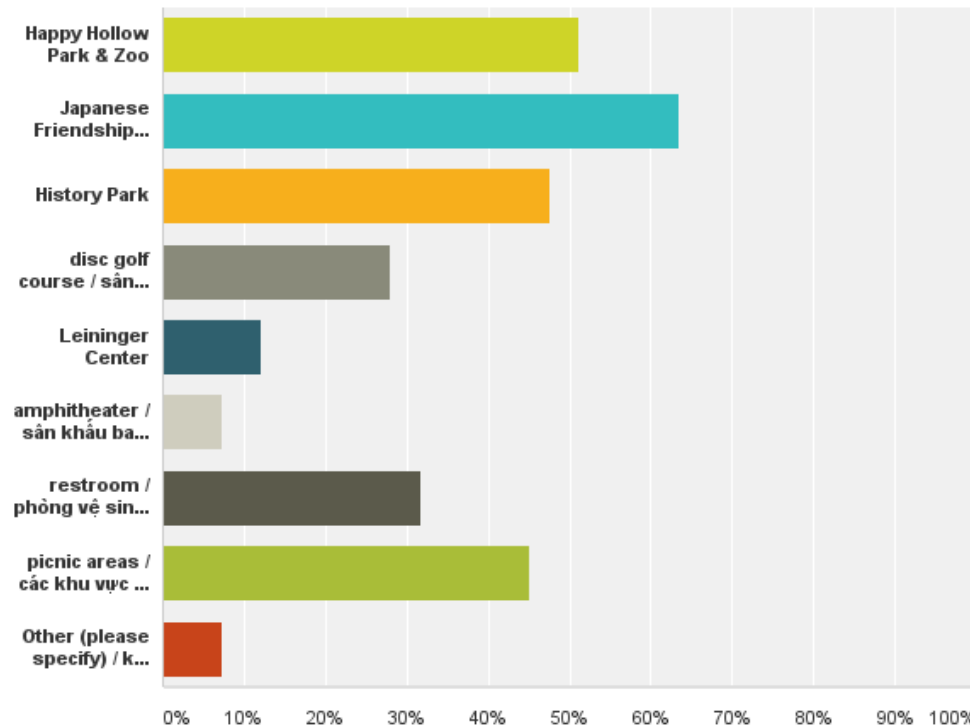
**Q6 What amenities at Kelley Park do you use when you visit? Select as many as apply.**

Answered: 373 Skipped: 3



**Q6 What amenities at Kelley Park do you use when you visit? Select as many as apply. / Quý vị dùng các tiện nghi nào tại Kelley Park khi đến đây? Chọn bao nhiêu cũng được nếu áp dụng. / Qué amenities de Kelley Park utiliza cuando lo visita? Seleccione tantos como sean aplicables.**

Answered: 82 Skipped: 51



## Online Surveys

- **Q11 What changes would most improve your experience and use of Kelley Park?**
- Respondents listed many different themes, including:
  - cost of parking
  - facilities/restrooms
  - expand park connections
  - programming
  - maintenance/infrastructure
  - Vietnamese Cultural Heritage Garden/Community Center
  - security
  - disc golf
  - remove homeless
  - expand Happy Hollow uses/hours
  - nothing
  - signage
  - trolley
  - bike paths and racks
  - playgrounds
  - food service
  - gardens
  - signage
  - shuttle



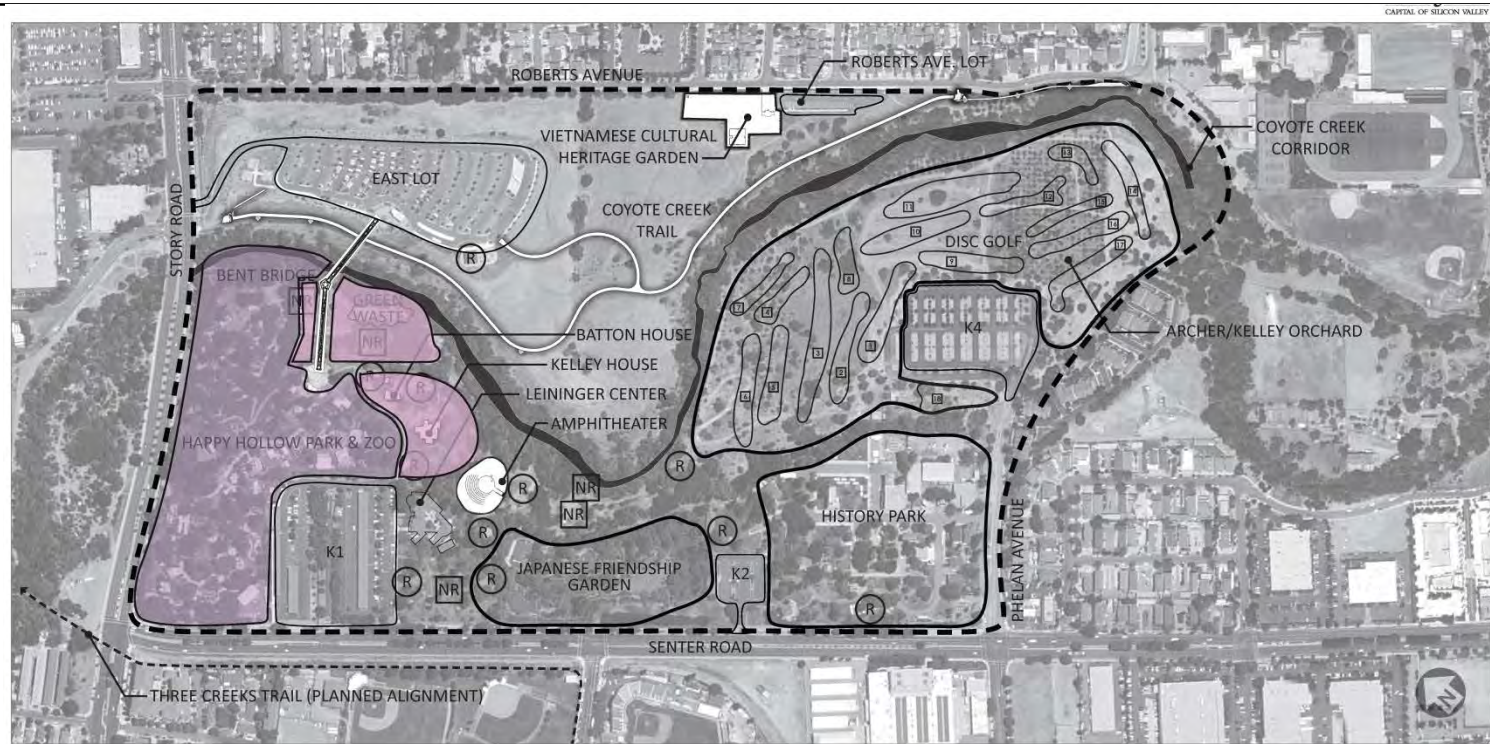
# Draft Approaches

## Major Park Facilities

## Suggested Change

Happy Hollow Park and Zoo

Expand to include Ranger (Batton) and Kelley Houses plus the area under the Bent Bridge and lower area behind Kelley House



# Draft Approaches

## Major Park Facilities

## Suggested Change

Vietnamese Cultural Heritage Garden

Support planned Vietnamese Cultural Heritage Garden.







# Draft Approaches

## Major Park Facilities

## Suggested Change

## Picnic Areas

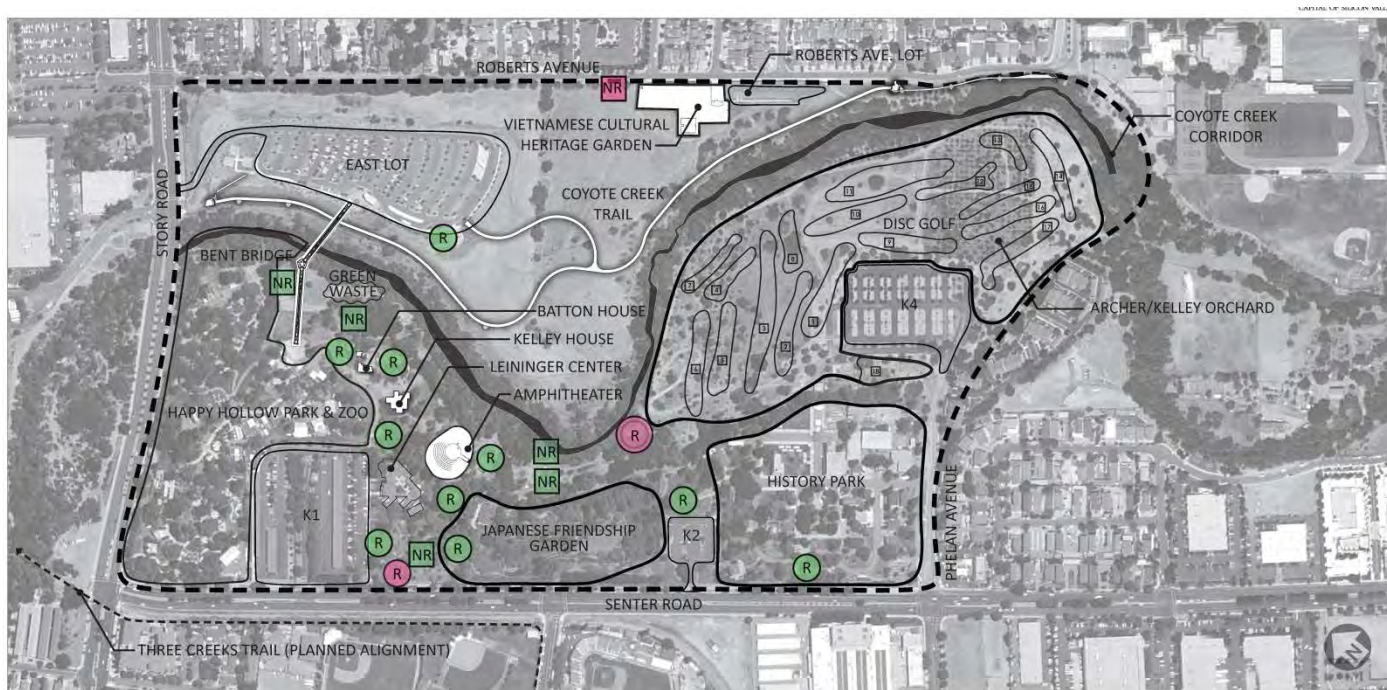
New picnic area along Roberts Avenue.

More picnic along Senter Street.

Expanded Family Circle group picnic areas near K2 parking lot.

Look into making wifi available.

Add water fountains.



# Draft Approaches

Major Park Facilities	Suggested Change
History Park	Retained in current position.
Amphitheater	Retained in current position with additional programming including fee and non-fee required programming.
Japanese Friendship Garden	Retained in current position.



# Draft Approaches

## Major Park Facilities

## Suggested Change

## Play Areas

One small natural play area between Coyote Creek and Japanese Friendship Garden.

New play area along Senter Road – think about need for fencing with speed on Senter.

New play area along Roberts Avenue.





# Draft Approaches

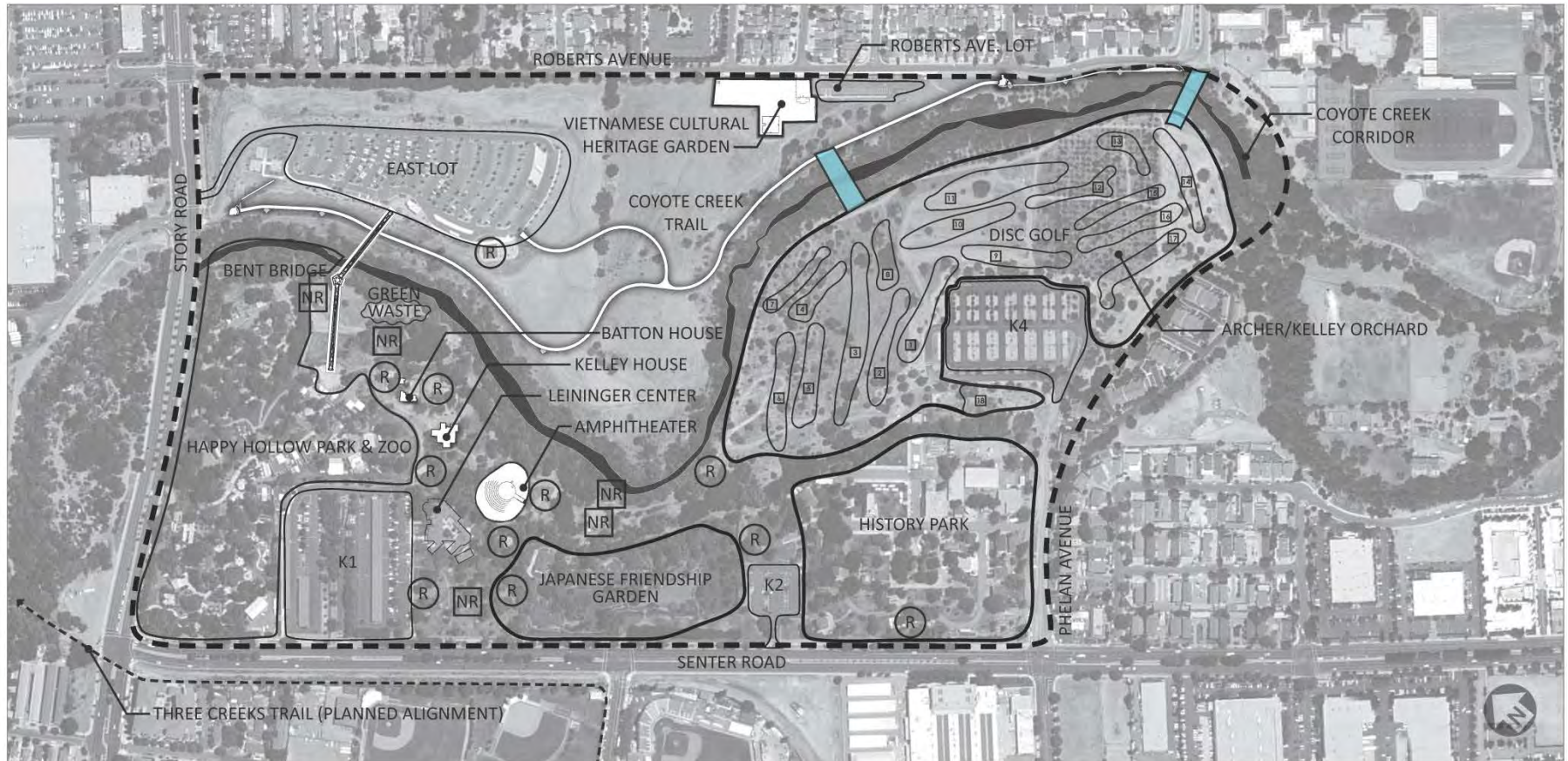
## Major Park Facilities

## Suggested Change

Coyote Creek and Trail

New crossing at Phelan Avenue

Second crossing closer to Vietnamese Cultural Heritage Garden





# Draft Approaches

## Major Park Facilities

## Suggested Change

Restrooms

Improve/expand Japanese Friendship Garden restroom, East parking lot.

Add restrooms at any new cultural/community center, play areas especially by Leininger Center, at all parking lots, amphitheater (might be accommodated with expanded restroom facility by Japanese Friendship Garden).





# Draft Approaches

## Park Beautification

## Suggested Change

Green Debris Center

Relocated to storage building by Orchard parking lot – need to find new place for train that is stored there



# Draft Approaches

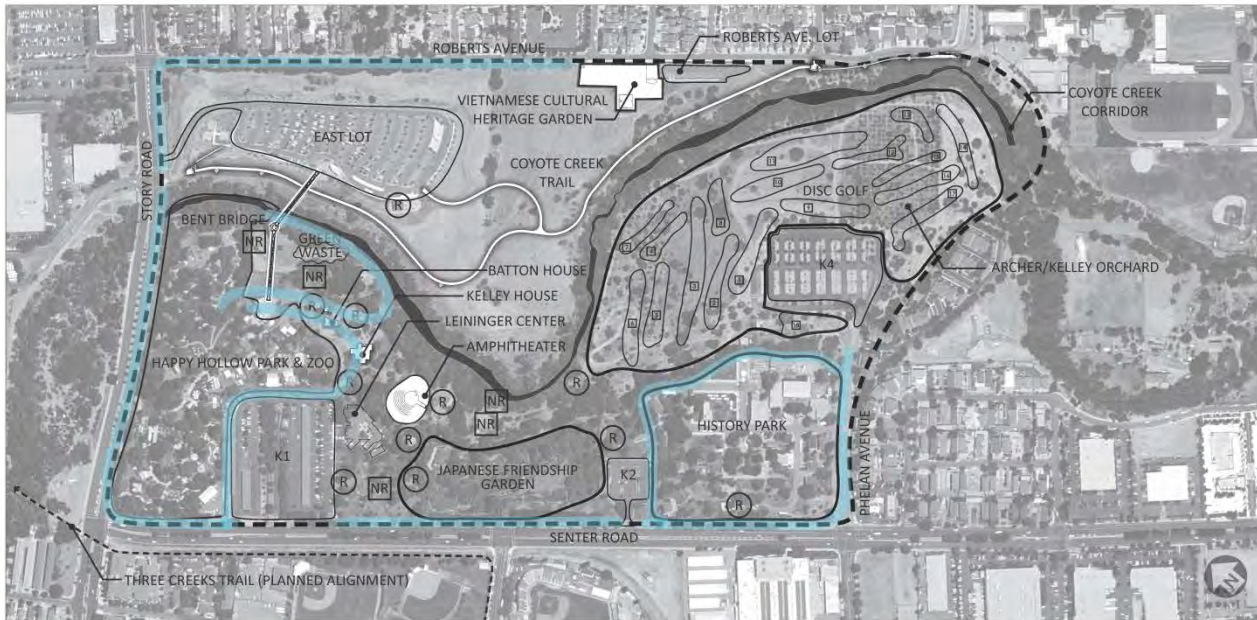
## Park Beautification

## Suggested Change

Colorful planting and identity along Senter Road.

## Improved Edge Condition

Fence improvements along Roberts, Story, Senter, and Phelan and within park where separating uses – whether through replacement of chain link with wrought iron or steel fencing, artistic embellishments, or other improvements.



# Draft Approaches

---

## Access and Circulation

---

## Suggested Change

---

Multi-modal Trails

Coyote Creek pedestrian and bicycle trail.

Connector Trail to East Lot.

Walking path with fitness nodes along Roberts Avenue.

Trail between East Lot and Vietnamese Cultural Heritage Garden.

Meandering trail network between Roberts Avenue and Coyote Creek Trail.

Interim Three Creeks Trail to Coyote Creek Trail connection to be discussed.

Provide 24/7 pedestrian and bike through park access using Bent Bridge

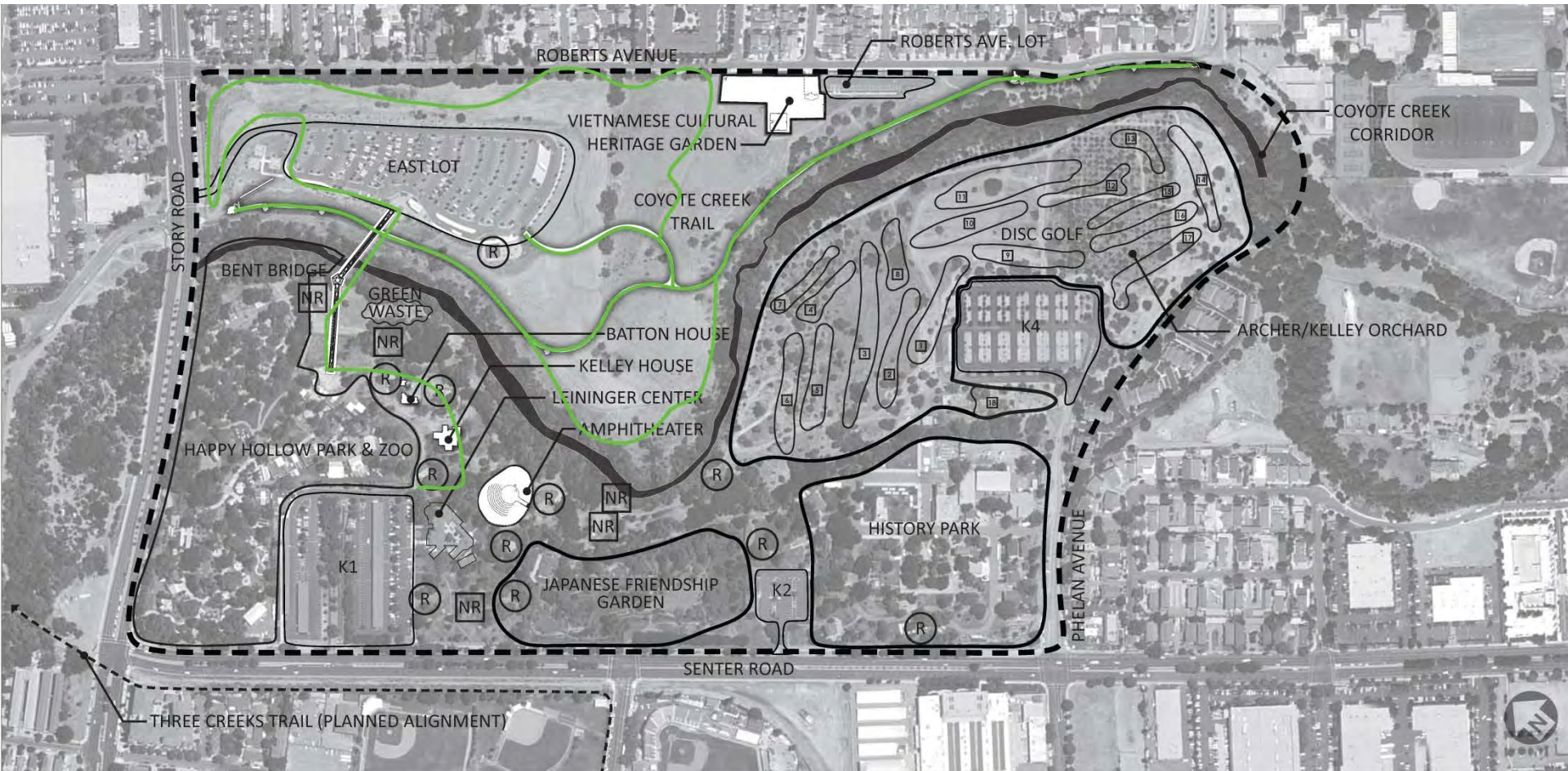
---



# Draft Approaches

## Access and Circulation

## Suggested Change



# Draft Approaches

Access and Circulation	Suggested Change
Non-vehicular Park Transit	<p>Trolley with 4 stops:</p> <ul style="list-style-type: none"><li>• main entry to History Park off Phelan Avenue.</li><li>• near the K2 parking lots.</li><li>• near the K1 parking lot.</li><li>• intersection of Senter Road and Alma Avenue.</li></ul>
Internal Train/Trolley	Reintroduce a train for internal park circulation
Parking Lot Entrances	Gateway entry markers or trellises.



# Draft Approaches





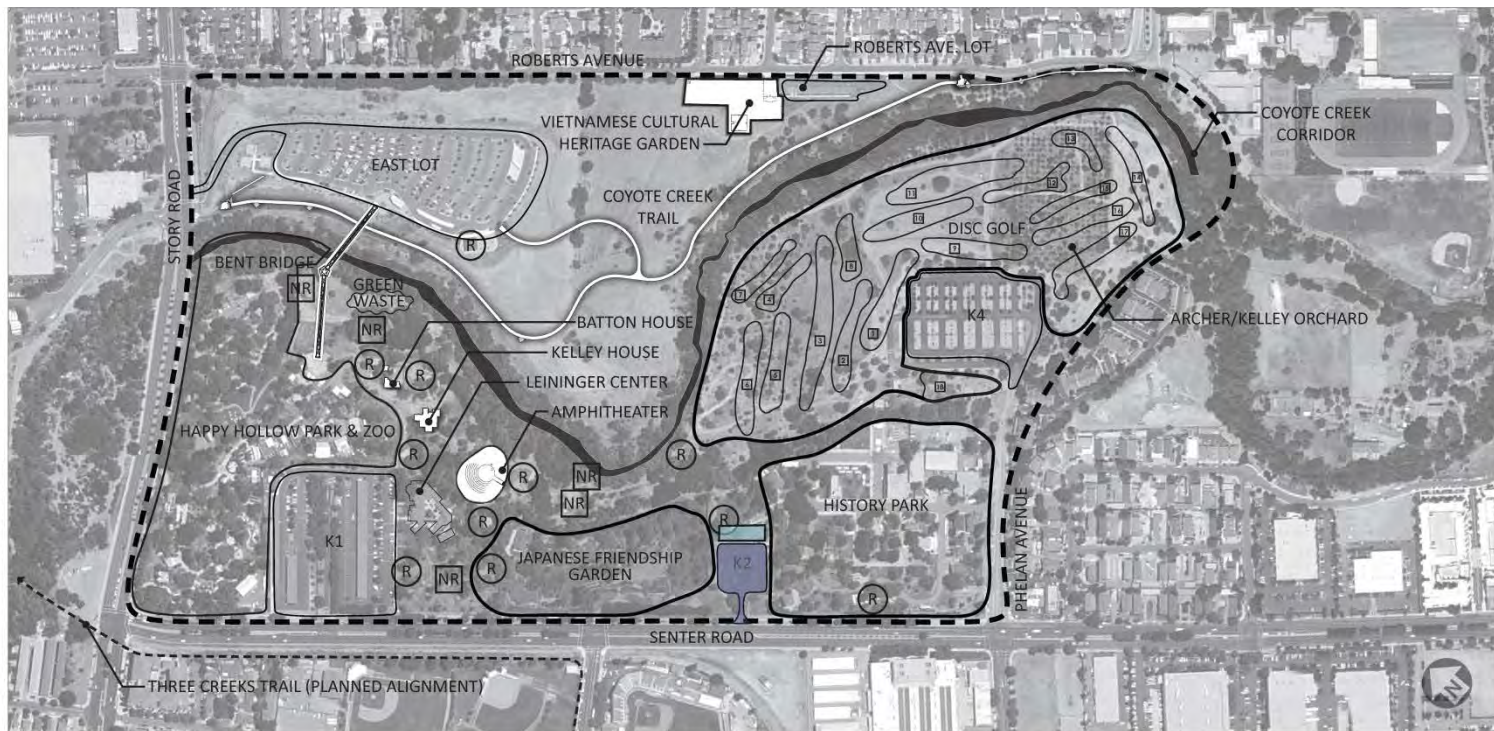
# Draft Approaches

## Access and Circulation

## Suggested Change

K2 Parking Lot

Look at removing train track and relocating picnic area to expand parking.



# *Draft Approaches*

---

Other Ideas?

Suggested Change

---

---



## *Small Group Discussions*

- Refer to map of Kelley Park
- Select facilitator, timekeeper, and note-taker
- Discuss new ideas for improvements/uses in underutilized areas
- Discuss top (most desired/highest priority) improvements and why they are high or low priorities
- Rank top 4 improvements
- Turn in group notes

# *Discussion Summary*

- Group summaries



## *Schedule & Next Steps*

- City engaging architects to identify program needs for a Vietnamese Community Center (initial planning began 10 years ago)
- Locations to be considered based on programming needs
- Approaches to be refined based on community feedback and outcome of programming needs



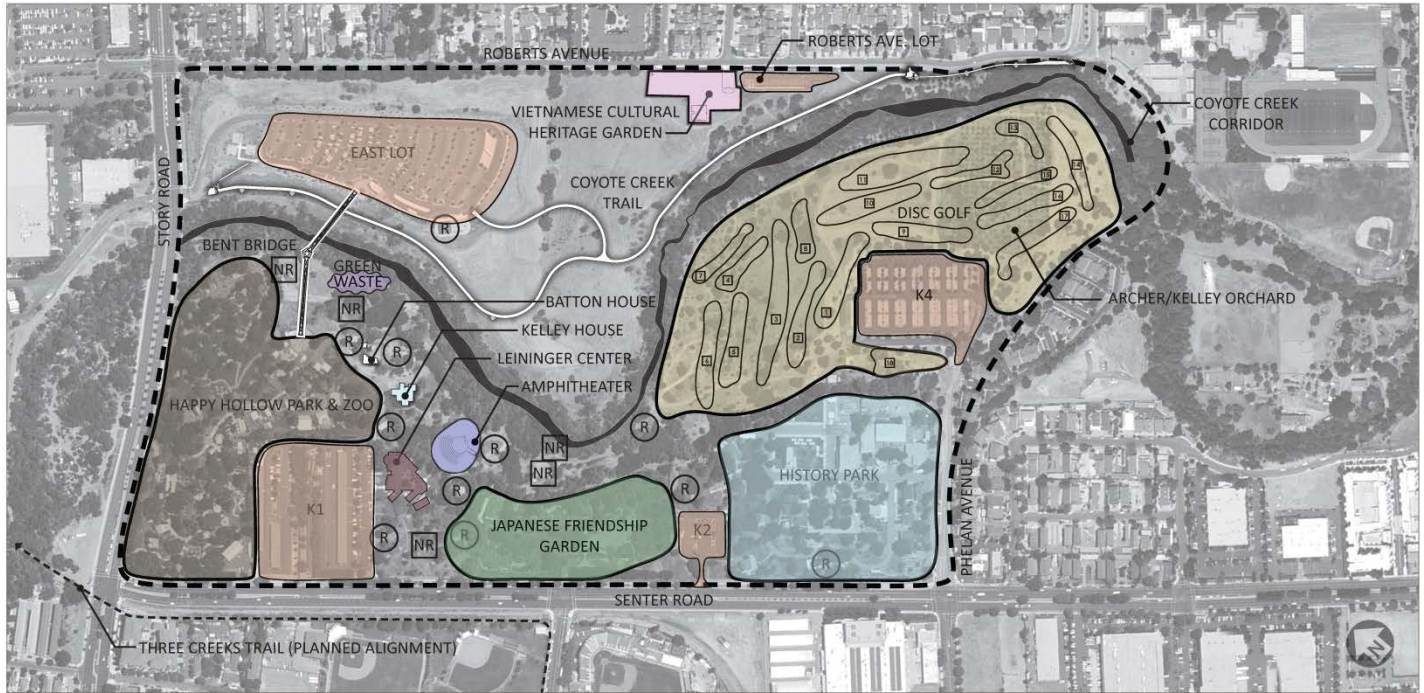




## KELLEY PARK COMMUNITY MEETING

### Introduction to Discussion

As part of this project, the City is soliciting public input to collect information to better understand the use of and needs for Kelley Park by current and potential park users.



Discuss the following items with your group and summarize your thoughts. These handouts will be collected and used to inform the process moving forward.

On the back side of this sheet is a list of approaches to make better use of underutilized areas in Kelley Park and will serve as the basis for your group discussion.

Theo dự án này, Thành Phố muốn thăm dò ý kiến của cộng đồng để hiểu rõ hơn những công dụng và nhu cầu của những người đang và sẽ sử dụng Kelley Park trong tương lai.

Xin vui lòng thảo luận về những vấn đề sau đây, và làm vấn tắt ý kiến. Chúng tôi sẽ gom góp những giấy này để học hỏi thêm. Xin lật trang sau để lấy thêm ý kiến

Como parte de este proyecto, la Ciudad está solicitando la opinión del público para recoger información para comprender mejor el uso y necesidades de Kelley Park de los usuarios actuales y potenciales del parque.

Discutir los siguientes elementos con su grupo y resumir sus pensamientos. Estos folletos serán recogidos y utilizados para informar el avance del proceso.



1. What other ideas do you have for making better use of the underutilized areas in Kelley Park?  
Quý vị có những ý kiến nào khác để sử dụng một cách thích nghi hơn những khu ít được chiếu cố trong Kelley Park?  
Que otras ideas tiene usted para hacer un mayor uso de las areas menos utilizadas en el Parque Kelley?
  
2. What improvements are most important and why?  
Theo quý vị, những cải tiến nào quan trọng nhất? Tại sao?  
Cuales son las mejoras mas importantes para usted y porque?
  
3. What are your top four priorities for improvements to Kelley Park?  
Xin cho biết 4 sự cải tiến ưu tiên cho Kelley Park của quý vị.  
Cuales son sus cuatro prioridades principals para la mejora del parque Kelley?



**KELLEY PARK MASTER PLAN UPDATE**  
Community Meeting and Discussion

Area	Proposed Change	Place an X to Mark Your Group's Top 4 Priorities
Happy Hollow Park and Zoo	Expand to include Ranger (Batton) and Kelley Houses plus the area under the Bent Bridge and lower area behind Kelley House	
Vietnamese Cultural Heritage Garden	Support planned Vietnamese Cultural Heritage Garden.	
Agricultural District and Disc Golf Course	Expand orchard planting. Disc golf course retained intact.	
Picnic Areas	New picnic area along Roberts Avenue. Expanded picnic along Senter Street. Expanded Family Circle group picnic areas near K2 parking lot. Look into making wifi available. Add water fountains.	
History Park	Retained in current position.	
Amphitheater	Retained in current position with additional programming including fee and non-fee required programming.	
Japanese Friendship Garden	Retained in current position.	
Play Areas	One small natural play area between Coyote Creek and Japanese Friendship Garden. New play area along Senter Road – think about need for fencing with speed on Senter. New play area along Roberts Avenue.	
Coyote Creek and Trail	New crossing at Phelan Avenue Second crossing closer to Vietnamese Cultural Heritage Garden	
Restrooms	Improve/expand Japanese Friendship Garden restroom, East parking lot. Add restrooms at any new cultural/community center, play areas especially by Leininger Center, at all parking lots, amphitheater (might be accommodated with expanded restroom facility by Japanese Friendship Garden).	
Green Debris Center	Relocated to storage building by Orchard parking lot – need to find new place for train that is stored there	





Improved Edge Condition	Colorful planting and identity along Senter Road. Fence improvements along Roberts, Story, Senter, and Phelan and within park where separating uses – whether through replacement of chain link with wrought iron or steel fencing, artistic embellishments, or other improvements.	
Multi-modal Trails	Coyote Creek pedestrian and bicycle trail. Connector Trail to East Lot. Walking path with fitness nodes along Roberts Avenue. Trail between East Lot and Vietnamese Cultural Heritage Garden. Meandering trail network between Roberts Avenue and Coyote Creek Trail. Interim Three Creeks Trail to Coyote Creek Trail connection to be discussed. Provide 24/7 pedestrian and bike through park access using Bent Bridge	
Non-vehicular Park Transit	Trolley with 4 stops: <ul style="list-style-type: none"> <li>• main entry to History Park off Phelan Avenue.</li> <li>• near the K2 parking lots.</li> <li>• near the K1 parking lot.</li> <li>• intersection of Senter Road and Alma Avenue.</li> </ul>	
Internal Train/Trolley	Reintroduce a train for internal park circulation	
Parking Lot Entrances	Gateway entry markers or trellises	
K2 Parking Lot	Look at removing train track and relocating picnic area to expand parking.	
Other? Describe		

Comments: