

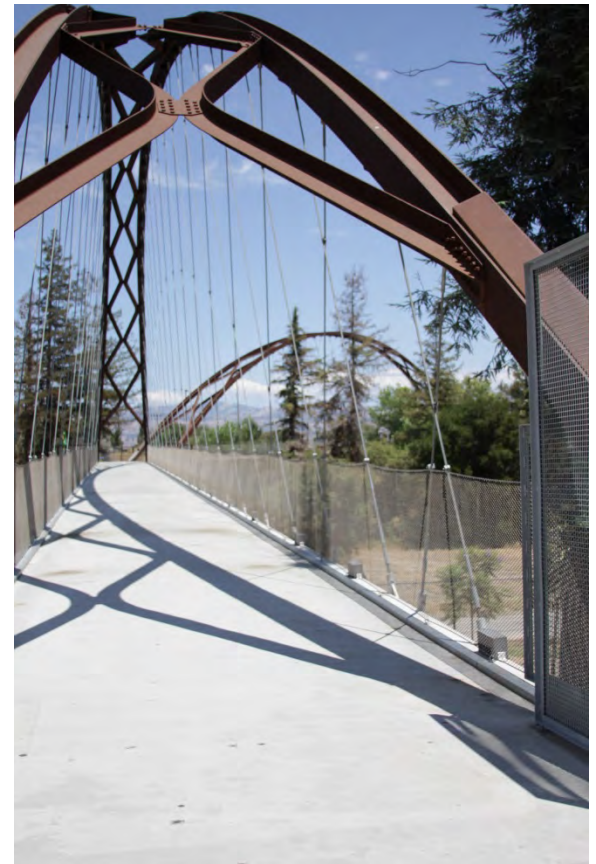


Kelley Park Master Plan Update

Community Meeting #2: February 25, 2016

Project Contacts

- **City Staff**
 - *Yu-Wen Huang, Landscape Architect, PRNS
(main point of contact: yu-wen.huang@sanjoseca.gov)*
 - *Al Smith, Associate Landscape Architect, PW*
- **Design Team Consultant**
 - *PlaceWorks*
 - *Melissa Erikson, Senior Associate,
Landscape Architect*
 - *Sarah Sutton, Principal, Landscape
Architect*
 - *Dave Sherman, Landscape Designer*



Key Constituents

- **City of San José Departments of Parks, Recreation & Neighborhood Services and Public Works with PlaceWorks**
- **Neighboring Residents**
- **Regional Park Users**
- **Stakeholders –**
Neighborhood Associations, HOAs, Happy Hollow Park & Zoo, Happy Hollow Foundation, History San José, San José – Okayama Sister City Organization, Japantown Business Association, Vietnamese Heritage Society, Silicon Valley Disc Golf Club, San José State University Athletics, Sharks Ice at San José, San José Giants, Yerba Buena High School, Council District 7, Parks & Recreation Commission, Keep Coyote Creek Beautiful, Santa Clara Valley Audubon Society, Preservation Action Council, San José Park Foundation, Sierra Club Loma Prieta Chapter



Tonight's Agenda

- Project Goals
- History and Site Analysis Overview
- Online Survey
- Draft Approaches
- Small Group Discussion
- Summary of Responses
- Next Steps



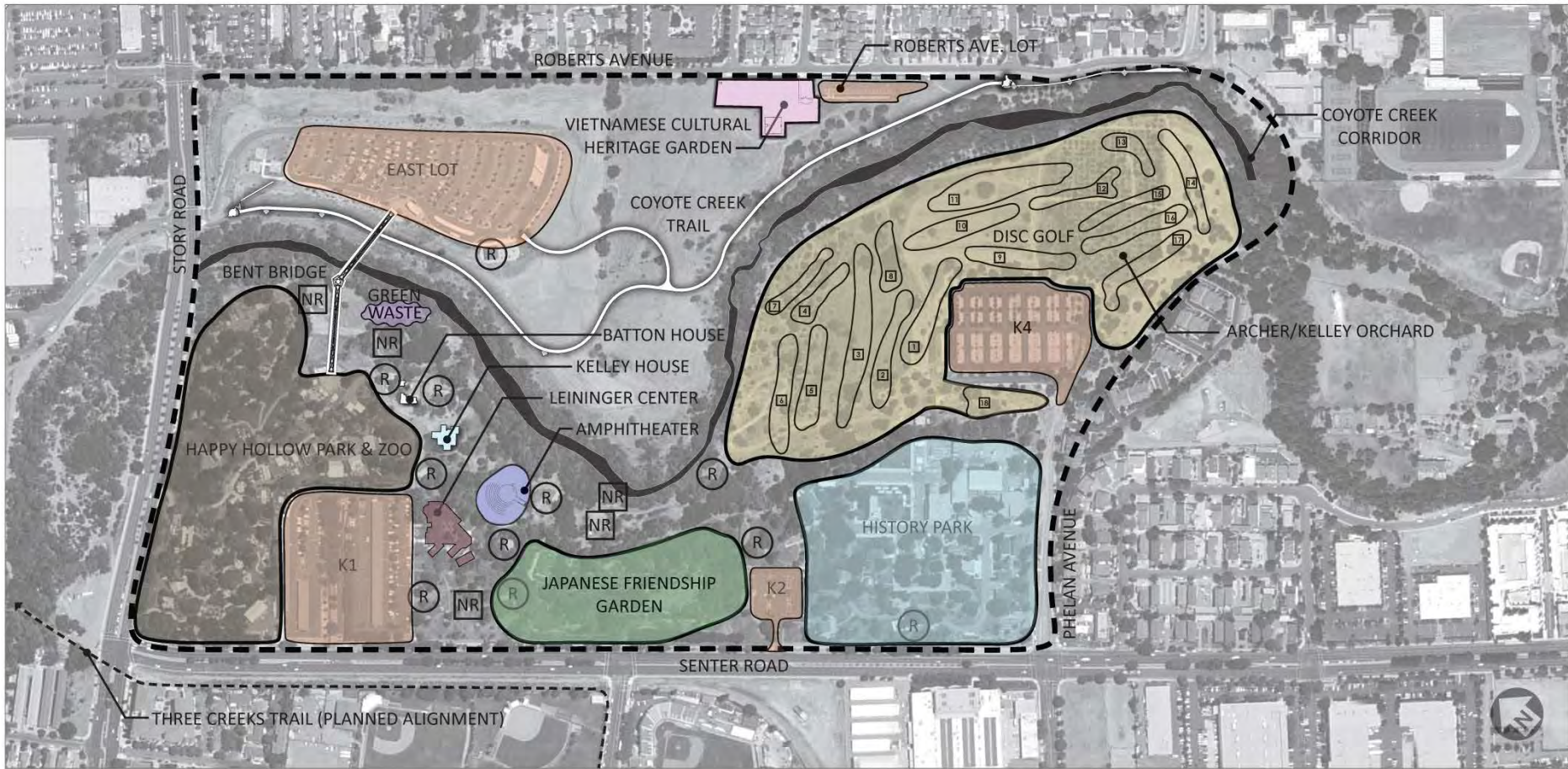
Project Goals

Provide a refined vision for Kelley Park, updating and building on the existing Master Plan, and focusing on creating:

- Unified wayfinding and circulation (signage)
- Enhanced entry experiences
- Recommendations for improvements including removal, additions, or relocation
- Enhancement to undeveloped and under-used areas



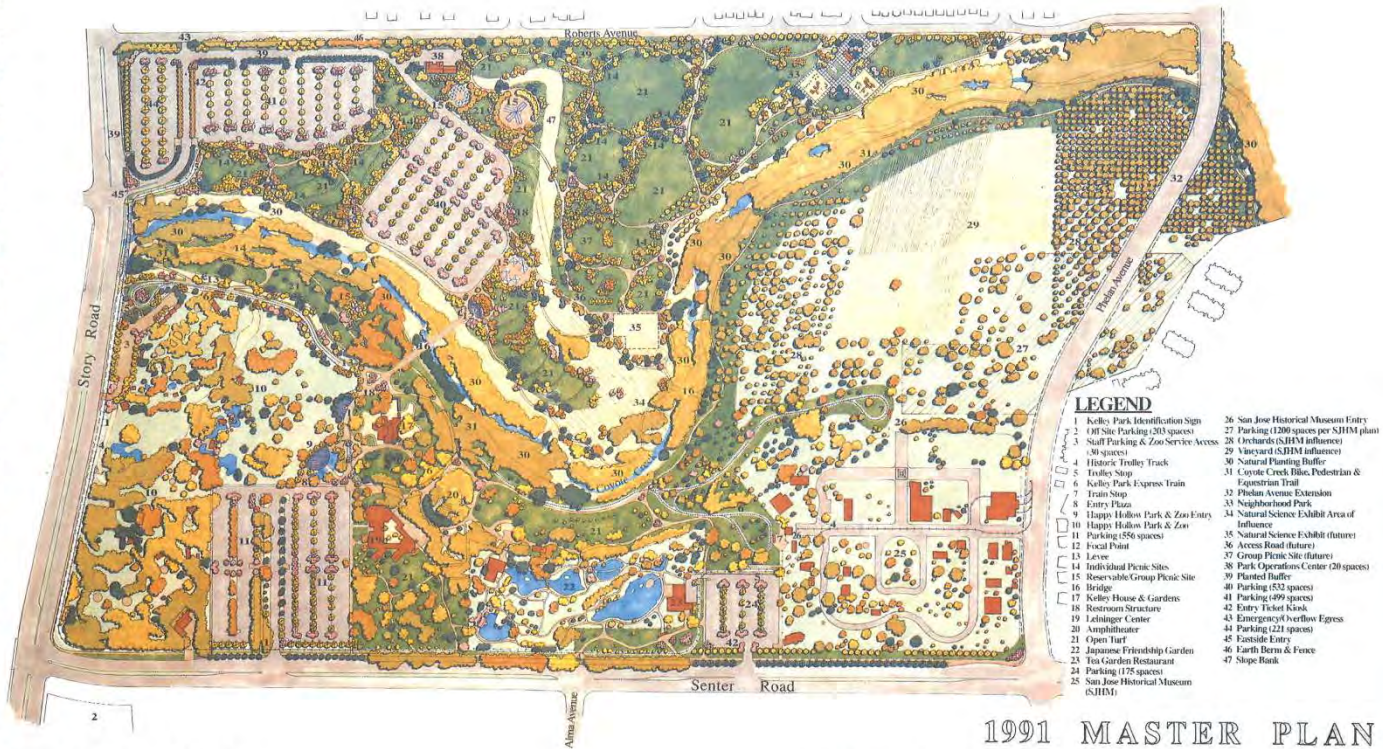
Park Lands



EXISTING CONDITIONS

Master Plan (1991)

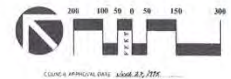
1991 KELLEY PARK MASTER PLAN



Kelley Park
City of San Jose

R. Williams DATE 6.26.95
RALPH A. WILLIAMS, JR.
DIRECTOR OF PUBLIC WORKS

Ann Oppenheimer DATE 6/16/95
ANN OPPENHEIMER
DIRECTOR OF CONVENTION, COLLEGE AND VISITOR SERVICES

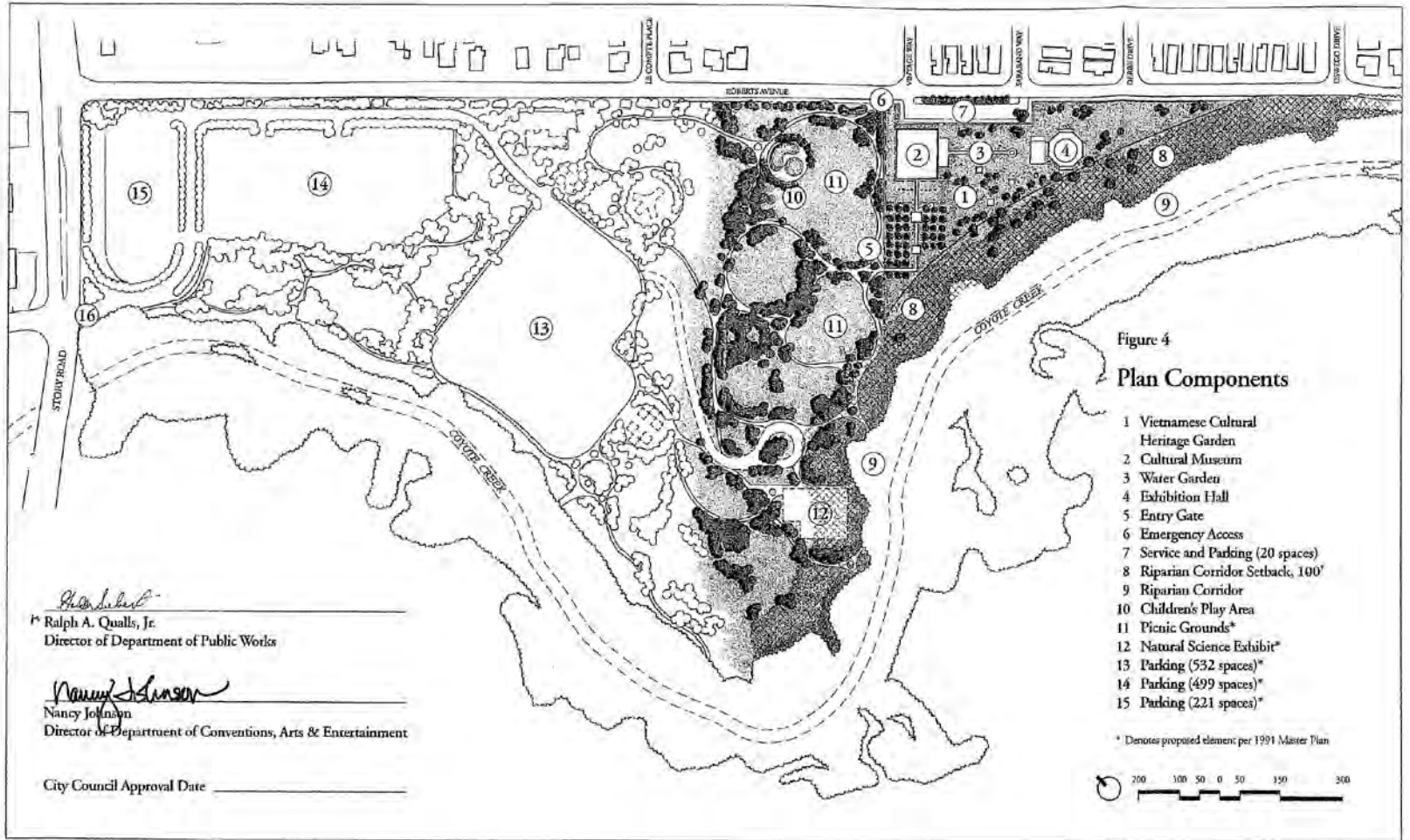


R+G
Ralph Appelbaum Associates
1120 California Street
San Francisco, CA 94109

1991 MASTER PLAN

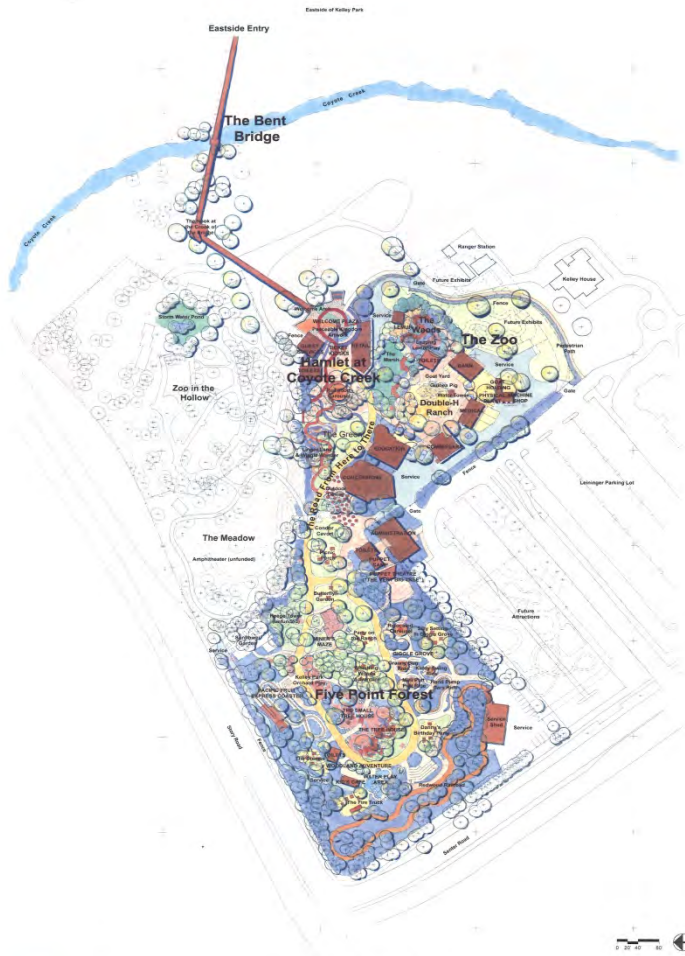
Figure 24

Master Plan Amendment (2000)



Kelley Park MASTER PLAN AMENDMENT & VIETNAMESE CULTURAL HERITAGE GARDEN MASTER PLAN

Happy Hollow (2000)



HAPPY HOLLOW PARK & ZOO
Schematic Design
Site Plan
May 17, 2005



Happy Hollow (2002)



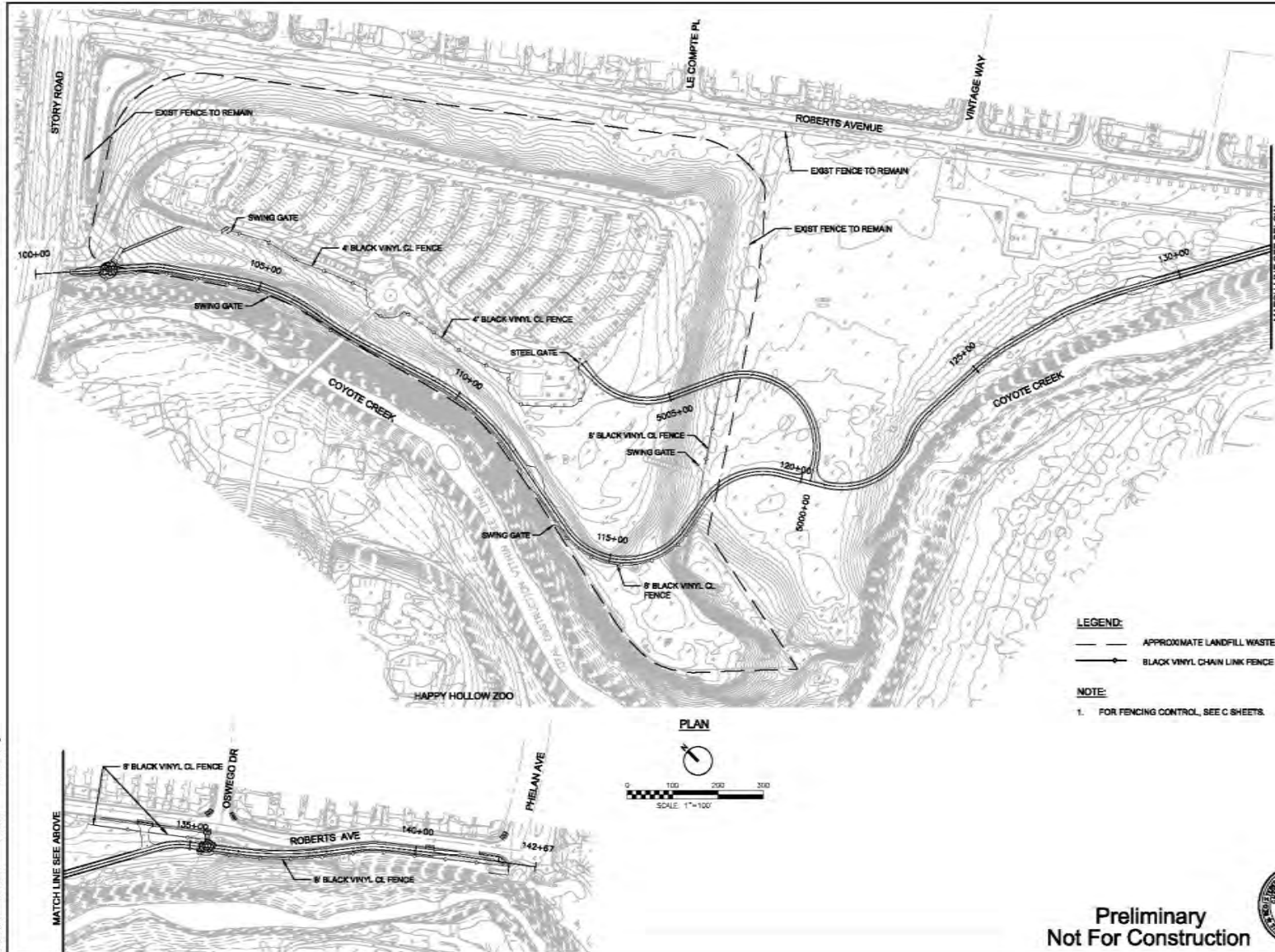
<p>THE PORTICO GROUP</p>	<p>The Portico Group with Nolla Associates, Inc. Economics Research Associates Wynn Design Group, Inc. Dennis Duffy & Associates, Inc. Keen Engineering, Inc. Oppenheim Lewis, Inc. ORCA Consulting Paladino & Company, Inc. Debra Ellis, Architect and Horticulturalist Natural Systems International, L.L.C.</p>	<p>Bond Funded Plan Happy Hollow Park and Zoo Parks Bond Project Program Refinement and Phase Strategy Plan San Jose, California June 2002</p>	<p>City of San Jose Public Works Parks & Recreation Facilities Division</p>	<p>HAPPY HOLLOW SAN JOSE, CA</p>
---------------------------------	---	--	---	---

Happy Hollow Long-Range (2002)

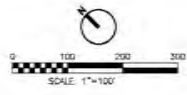


<p>THE PORTICO GROUP</p>	<p>The Portico Group with Nolla Associates, Inc. Economics Research Associates Wyatt Design Group, Inc. Davies Duffy & Associates, Inc. Keen Engineering Inc. Oppenheim Lewis, Inc. ORCA Consulting Palastino & Company, Inc. Dahn Ellis, Architect and Horticulturalist Natural Systems International, LLC.</p>	<p>Long Range Plan Happy Hollow Park and Zoo Parks Bond Project Program Refinement and Phase Strategy Plan San Jose, California June 2002</p>	<p>City of San Jose Public Works Parks & Recreation Facilities Division</p>
---------------------------------	---	---	---

Coyote Creek Trail (90% CDs 2015)



PLAN



LEGEND:
 - - - - - APPROXIMATE LANDFILL WASTE LIMITS
 ———— BLACK VINYL CHAIN LINK FENCE

NOTE:
 1. FOR FENCING CONTROL, SEE C SHEETS.



DAVID SYKES
 DIRECTOR OF PUBLIC WORKS

PROJECT TITLE:
 5992-COYOTE CREEK TRAIL (STORY ROAD TO PHELAN AVENUE)

REV	DATE	DESCRIPTION
1		
2		
3		
4		
5		

DESIGNED BY: J. L. LONG
 CHECKED BY: C. BENSON
 DRAWN BY: J. VAN PELT
 DATE: 3/9/15

OVERALL SITE AND FENCING PLAN

Preliminary
 Not For Construction



SHEET NO.: SP-1

PLAT DATE: 12-08-14 13:14:31 CSP_381.dwg

Site Analysis



Coyote Creek



Group Picnic Area



Group Picnic and Back Entry to Zoo



Lawn Area

Site Analysis



Group Picnic



Bike Parking by Zoo



Group Picnic



K1 Parking Entry



Amphitheater

Site Analysis



Zoo Entry Plaza



Japanese Fountain



Leininger Center



Zoo Entry Plaza



Bent Bridge

Site Analysis



View of Open Field from East Park Lot to Vietnamese Cultural Heritage Garden



Path by Leininger Center



Back Entry Path to Zoo

Constraints and Opportunities

- Clarify and Improve Internal Circulation
- Unify Signage, Wayfinding and Branding
- Activate Edges
- Repurpose Underused Areas
- Reach Out to the Community
- Respect Resources
- Prioritize Efforts

Map of underutilized space



Online Surveys

<http://www.sanjoseca.gov/facilities/Facility/Details/175>

- Online survey Fall 2015 (English only – 349 responses)
- Follow up to community workshop in online survey Fall 2015 (English only)
- Current online survey as of January 29, 2016
 - 188 responses and growing
 - Combines questions from first two surveys
 - English, Vietnamese, and Spanish
 - Responses to be combined with initial results
 - **Survey will be open for responses through March 31, 2016**
 - <https://www.surveymonkey.com/r/XR2BDRP>

Online Survey (as of Feb. 17, 2016)

- Q1 What is your zip code?
- 65+ different zip codes
- Largest response from 95112
- Three zip codes tied for second largest response: 95111, 95121, and 95125
- Regional versus neighborhood park needs



Online Surveys

- **Over 90% arrive by car**
- **Most use the park monthly – not daily**
- **Most use the park for 2 to 3 hours when they come**

Online Surveys

- Q4 What do you like most about Kelley Park?
 - The respondents listed many different themes.
 - The largest response mentioned Happy Hollow.
 - Other frequent responses included:
 - disc golf
 - cultural gardens
 - History Park
 - open space/natural areas
 - variety of activities
 - trolleys
 - location

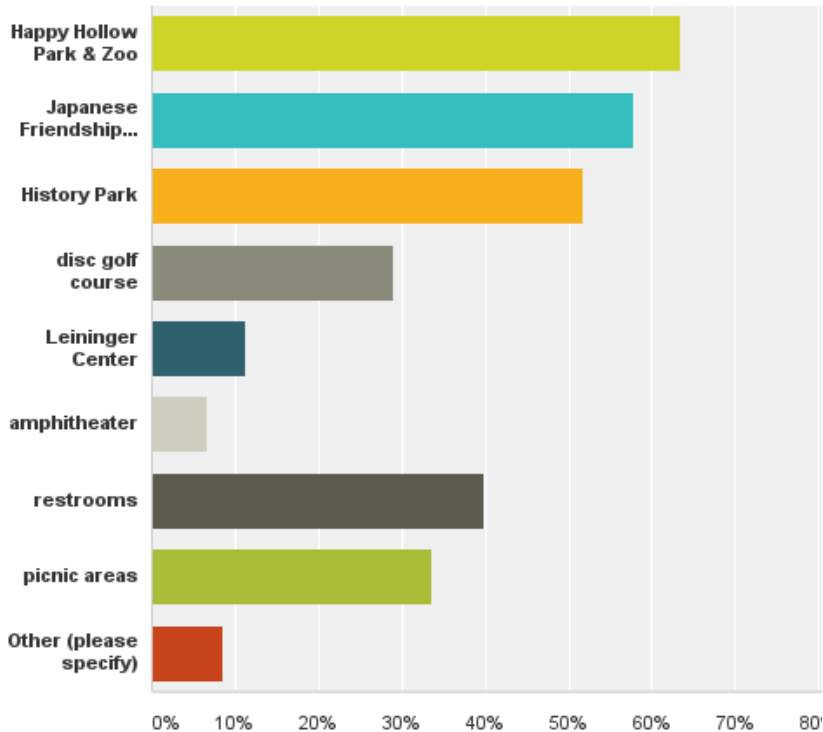
Online Surveys

- Q5 What do you like least about Kelley Park?
 - Respondents listed many different themes
 - Most common negative responses:
 - homeless encampments
 - cost of parking
 - Other responses included:
 - poor path connections
 - nothing
 - lack of facilities/restrooms
 - poor security
 - lack of programming
 - maintenance/trash
 - burned building
 - drinking/crime
 - poor signage
 - park hours
 - disc golf
 - lack of playgrounds
 - park hours

Online Surveys

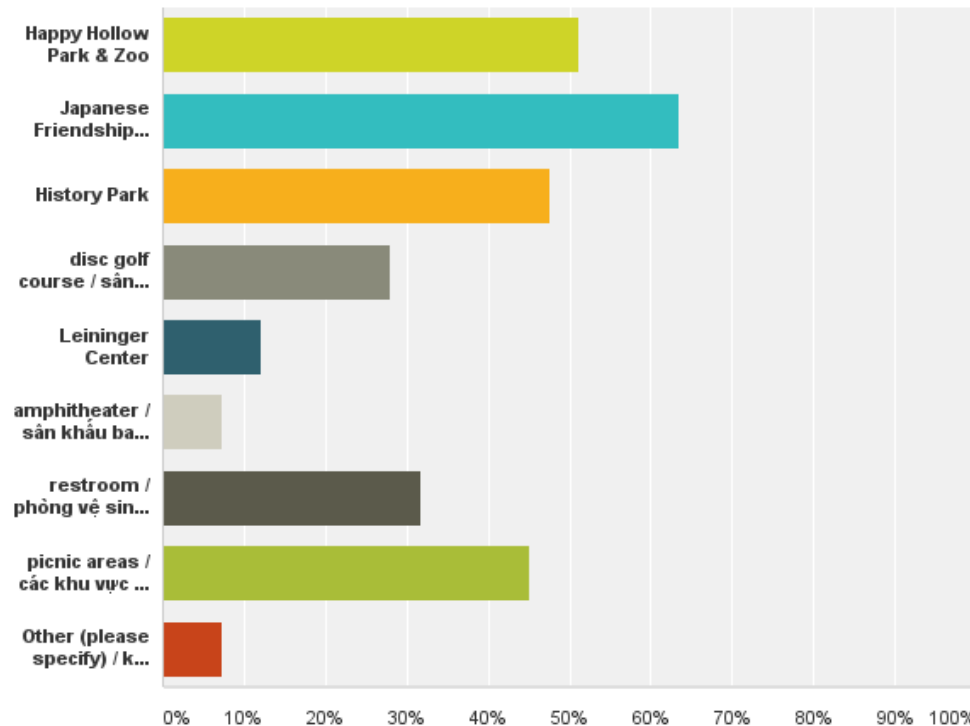
Q6 What amenities at Kelley Park do you use when you visit? Select as many as apply.

Answered: 373 Skipped: 3



Q6 What amenities at Kelley Park do you use when you visit? Select as many as apply. / Quý vị dùng các tiện nghi nào tại Kelley Park khi đến đây? Chọn bao nhiêu cũng được nếu áp dụng. / ¿Qué amenidades de Kelley Park utiliza cuando lo visita? Seleccione tantos como sean aplicables.

Answered: 82 Skipped: 51



Online Surveys

- **Q11 What changes would most improve your experience and use of Kelley Park?**
- Respondents listed many different themes, including:
 - cost of parking
 - facilities/restrooms
 - expand park connections
 - programming
 - maintenance/infrastructure
 - Vietnamese Cultural Heritage Garden/Community Center
 - security
 - disc golf
 - remove homeless
 - expand Happy Hollow uses/hours
 - nothing
 - signage
 - trolley
 - bike paths and racks
 - playgrounds
 - food service
 - gardens
 - signage
 - shuttle

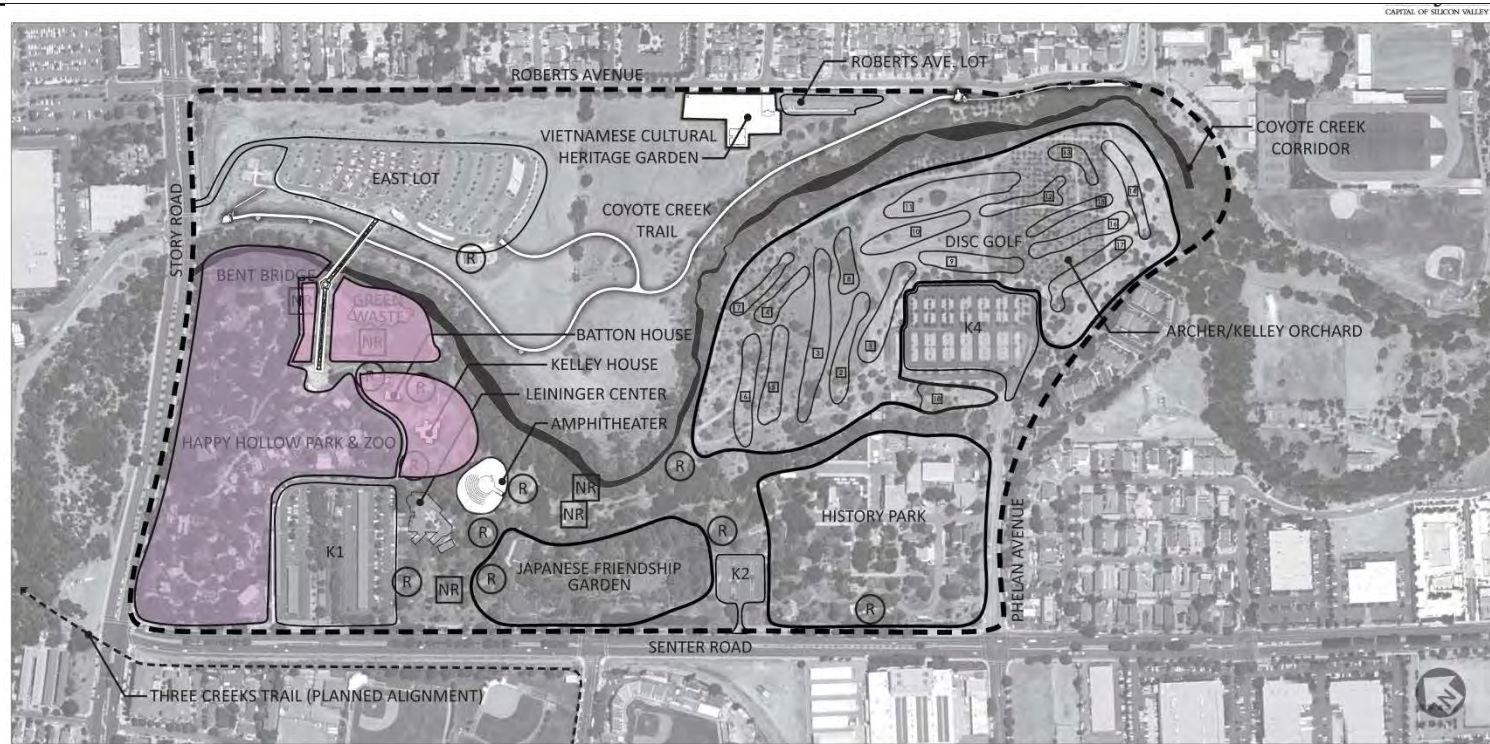
Draft Approaches

Major Park Facilities

Suggested Change

Happy Hollow Park and Zoo

Expand to include Ranger (Batton) and Kelley Houses plus the area under the Bent Bridge and lower area behind Kelley House



Draft Approaches

Major Park Facilities

Suggested Change

Vietnamese Cultural Heritage Garden

Support planned Vietnamese Cultural Heritage Garden.



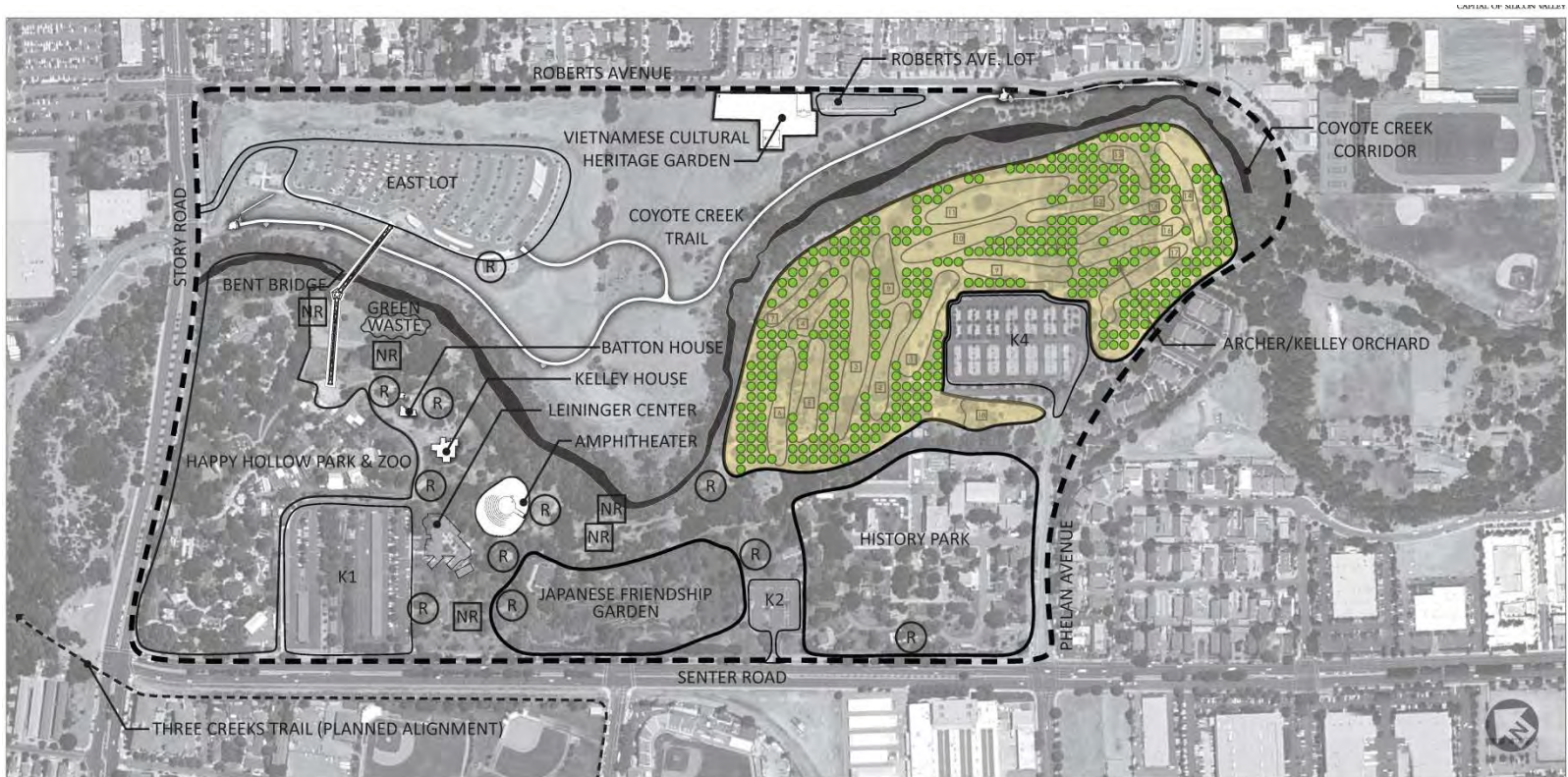
Draft Approaches

Major Park Facilities

Suggested Change

Agricultural District and Disc Golf Course

Expand orchard planting.
Disc golf course retained intact.



Draft Approaches

Major Park Facilities

Suggested Change

Picnic Areas

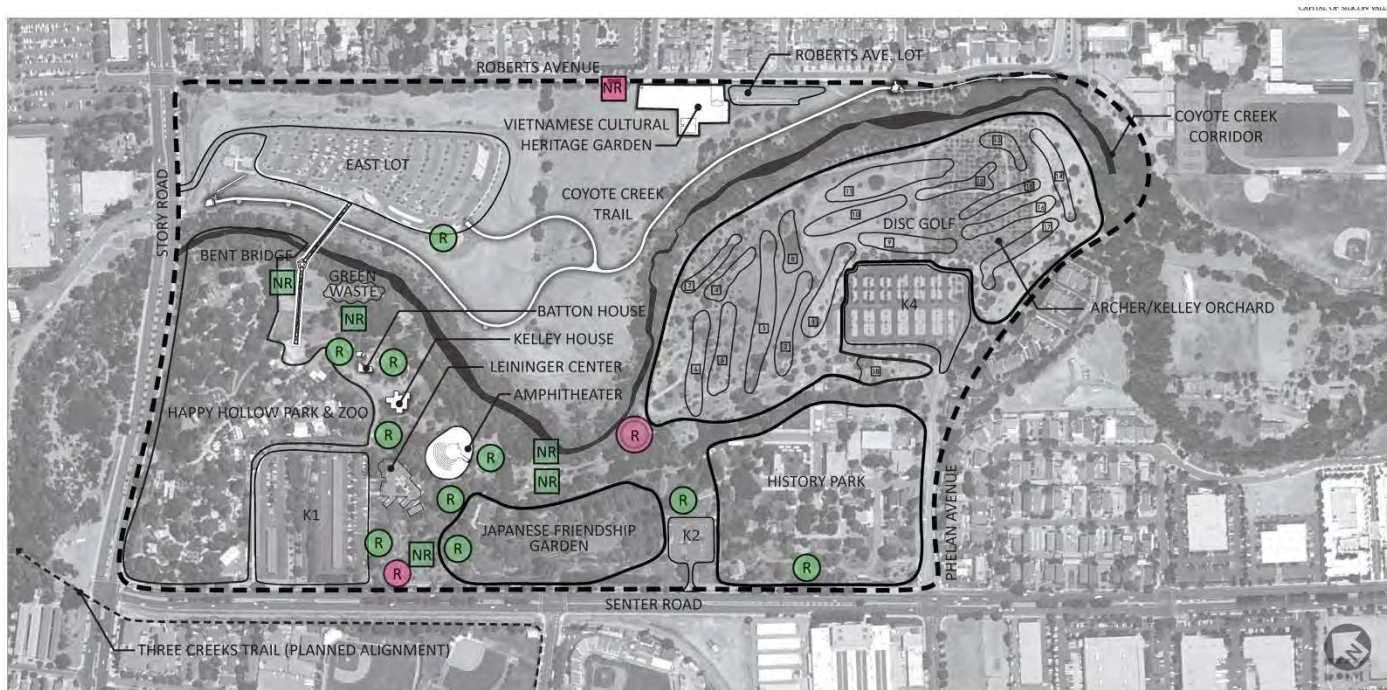
New picnic area along Roberts Avenue.

More picnic along Senter Street.

Expanded Family Circle group picnic areas near K2 parking lot.

Look into making wifi available.

Add water fountains.



Draft Approaches

Major Park Facilities

Suggested Change

History Park

Retained in current position.

Amphitheater

Retained in current position with additional programming including fee and non-fee required programming.

Japanese Friendship Garden

Retained in current position.

Draft Approaches

Major Park Facilities

Suggested Change

Play Areas

One small natural play area between Coyote Creek and Japanese Friendship Garden.

New play area along Senter Road – think about need for fencing with speed on Senter.

New play area along Roberts Avenue.



Draft Approaches

Major Park Facilities

Suggested Change

Coyote Creek and Trail

New crossing at Phelan Avenue

Second crossing closer to Vietnamese Cultural Heritage Garden



Draft Approaches

Major Park Facilities

Suggested Change

Improve/expand Japanese Friendship Garden restroom, East parking lot.

Restrooms

Add restrooms at any new cultural/community center, play areas especially by Leininger Center, at all parking lots, amphitheater (might be accommodated with expanded restroom facility by Japanese Friendship Garden).



Draft Approaches

Park Beautification

Suggested Change

Green Debris Center

Relocated to storage building by Orchard parking lot – need to find new place for train that is stored there



Draft Approaches

Park Beautification

Suggested Change

Colorful planting and identity along Senter Road.

Improved Edge Condition

Fence improvements along Roberts, Story, Senter, and Phelan and within park where separating uses – whether through replacement of chain link with wrought iron or steel fencing, artistic embellishments, or other improvements.



Draft Approaches

Access and Circulation

Suggested Change

Multi-modal Trails

Coyote Creek pedestrian and bicycle trail.

Connector Trail to East Lot.

Walking path with fitness nodes along Roberts Avenue.

Trail between East Lot and Vietnamese Cultural Heritage Garden.

Meandering trail network between Roberts Avenue and Coyote Creek Trail.

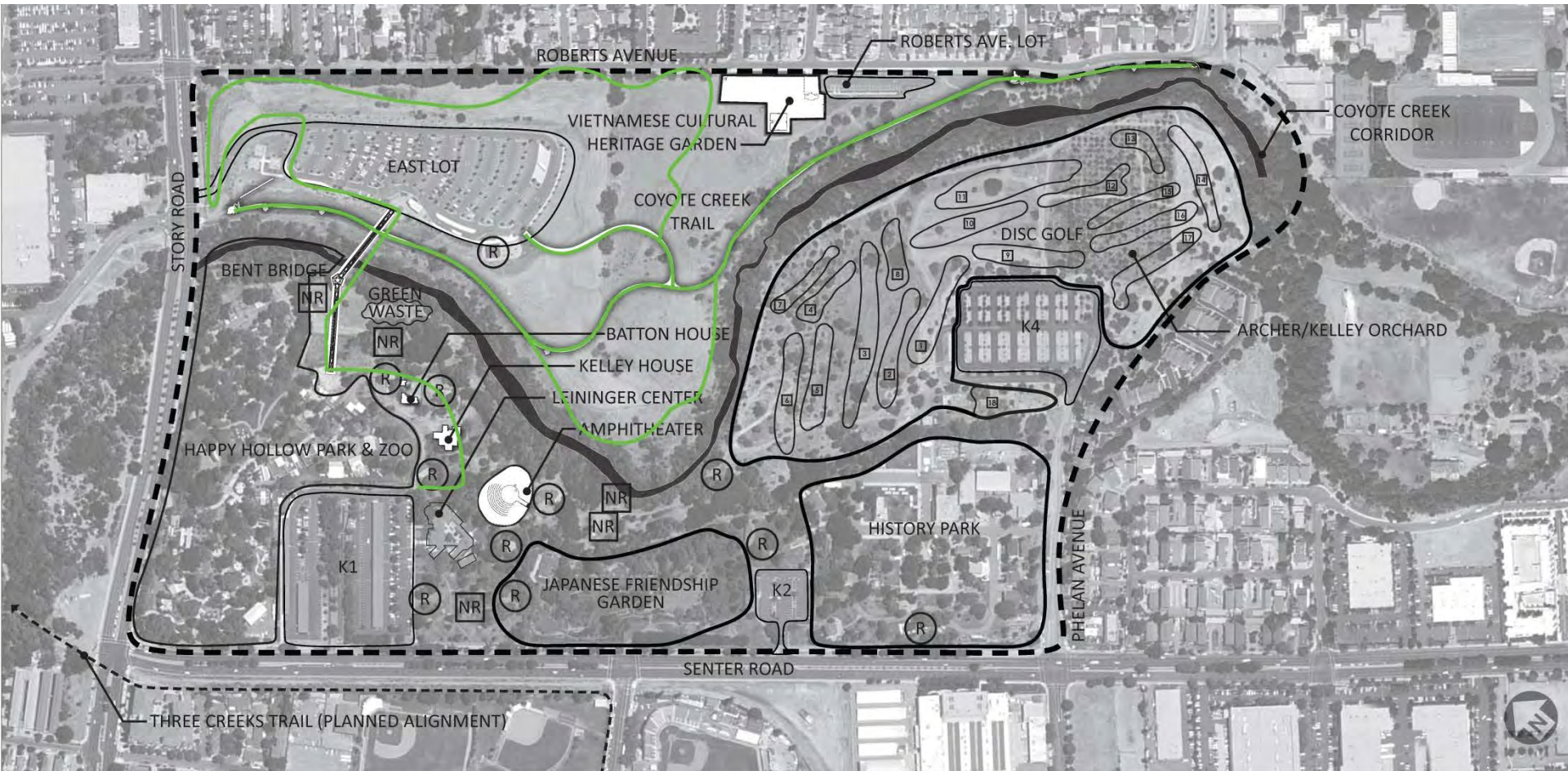
Interim Three Creeks Trail to Coyote Creek Trail connection to be discussed.

Provide 24/7 pedestrian and bike through park access using Bent Bridge

Draft Approaches

Access and Circulation

Suggested Change



Draft Approaches

Access and Circulation	Suggested Change
Non-vehicular Park Transit	<p>Trolley with 4 stops:</p> <ul style="list-style-type: none">• main entry to History Park off Phelan Avenue.• near the K2 parking lots.• near the K1 parking lot.• intersection of Senter Road and Alma Avenue.
Internal Train/Trolley	Reintroduce a train for internal park circulation
Parking Lot Entrances	Gateway entry markers or trellises.

Draft Approaches



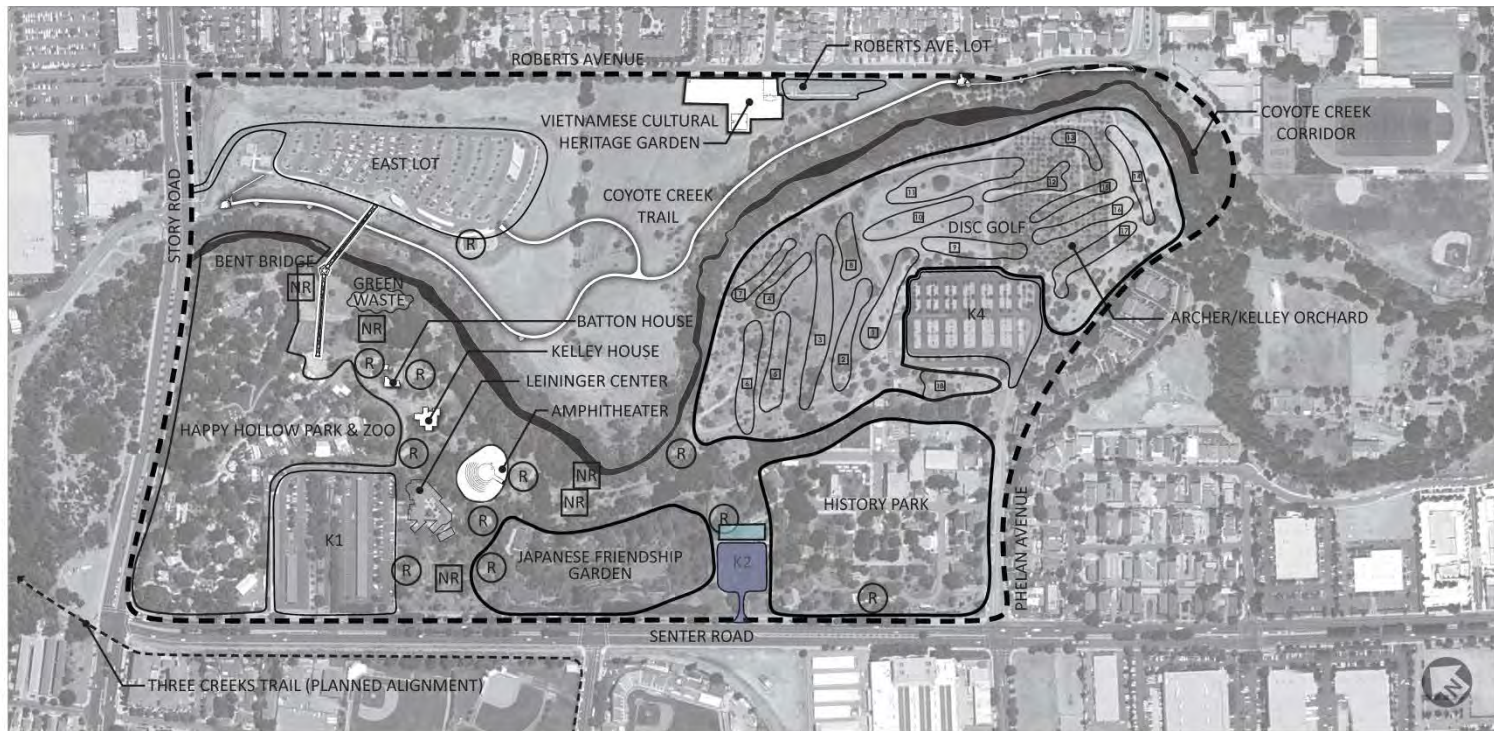
Draft Approaches

Access and Circulation

Suggested Change

K2 Parking Lot

Look at removing train track and relocating picnic area to expand parking.



Draft Approaches

Other Ideas?

Suggested Change

Small Group Discussions

- Refer to map of Kelley Park
- Select facilitator, timekeeper, and note-taker
- Discuss new ideas for improvements/uses in underutilized areas
- Discuss top (most desired/highest priority) improvements and why they are high or low priorities
- Rank top 4 improvements
- Turn in group notes

Discussion Summary

- Group summaries



Schedule & Next Steps

- City engaging architects to identify program needs for a Vietnamese Community Center (initial planning began 10 years ago)
- Locations to be considered based on programming needs
- Approaches to be refined based on community feedback and outcome of programming needs

