

Bridge Housing Community A Community Meeting

WEDNESDAY, JULY 11, 2018; 6:00PM-8:00PM

SATURDAY, JULY 14, 2018; 10AM-12PM

TUESDAY, JULY 17, 2018; 6:00P-8:00PM

THURSDAY, JULY 26, 2018; 6:00PM-8:00PM

Meeting Agenda

- ▶ Bridge Housing Communities- Overview and Updates
- ▶ Group Discussions
- ▶ Next Steps- Continuing the Conversation

Meeting Format

- ▶ Participants will gather in groups to brainstorm
- ▶ Workshop participants will discuss questions of preference and provide valuable input during group discussion
- ▶ A member of the group will report out to the larger group

Homelessness In San José

TOTAL NUMBER OF HOMELESS INDIVIDUALS ENUMERATED DURING THE POINT-IN-TIME HOMELESS CENSUS

Total Homeless Population: 4,350



*Applied Survey Research. (2017). San José Homeless Census.
Source: Applied Survey Research. (2004-2017). San José Homeless Census.*



Emergency Shelter Transitional Housing Safe Haven On the Street Abandoned Buildings Cars/ Vans/ RVs Encampment Areas

Housing First



- NATIONALLY RECOGNIZED APPROACH
- PROVIDE HOUSING
- DELIVER SERVICES
- ACHIEVE HOUSING STABILITY

Achieving Housing Stability

Essential Services

- Street Outreach
- Overnight Warming Centers
- Assembly Use Shelters
- Mobile Hygiene Program
- Emergency Shelters

Interim Solutions

- Bridge Housing Communities
- Master-leasing Hotel/Motels
- Hotel/Motel Conversion
- Safe Parking Programs

Permanent Solutions

- Rapid Rehousing Programs
- Vouchers
- Permanent Supportive Housing
- Underutilized Property Conversion

Essential Services



Street
Outreach

Overnight
Warming
Locations



Temporary:
Shelter

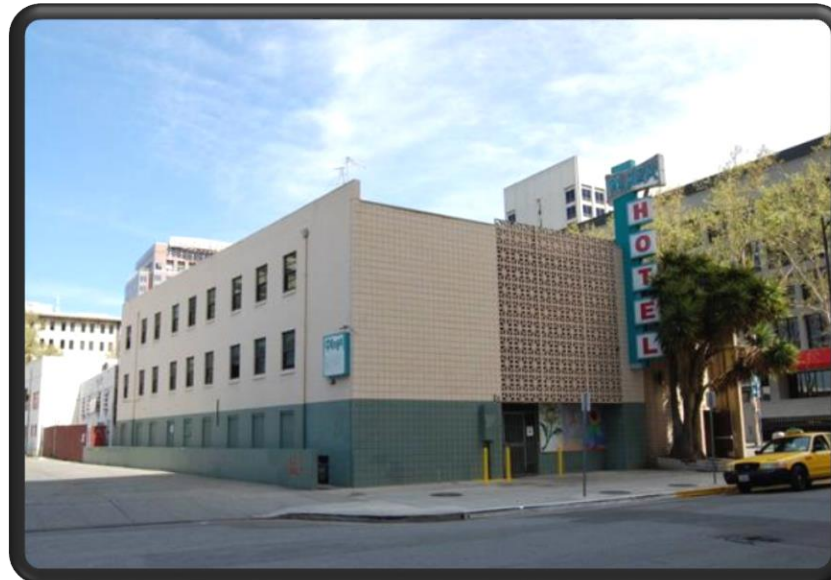


Interim Solutions



Bridge Housing Community
– San Jose, CA

Plaza Hotel – San Jose, CA



Safe Parking

Permanent Supportive Housing



- PROVIDES LONG TERM AFFORDABLE HOUSING.
- SERVICES PROVIDED ON-SITE
- HOUSING DEVELOPMENTS IN SAN JOSE
 - Second Street Studios
 - North San Pedro
 - Quetzal Gardens
 - Villas on the Park
 - Renascent Place

Assembly Bill 2176

City owned or leased property

Suspends most local and state regulatory requirements

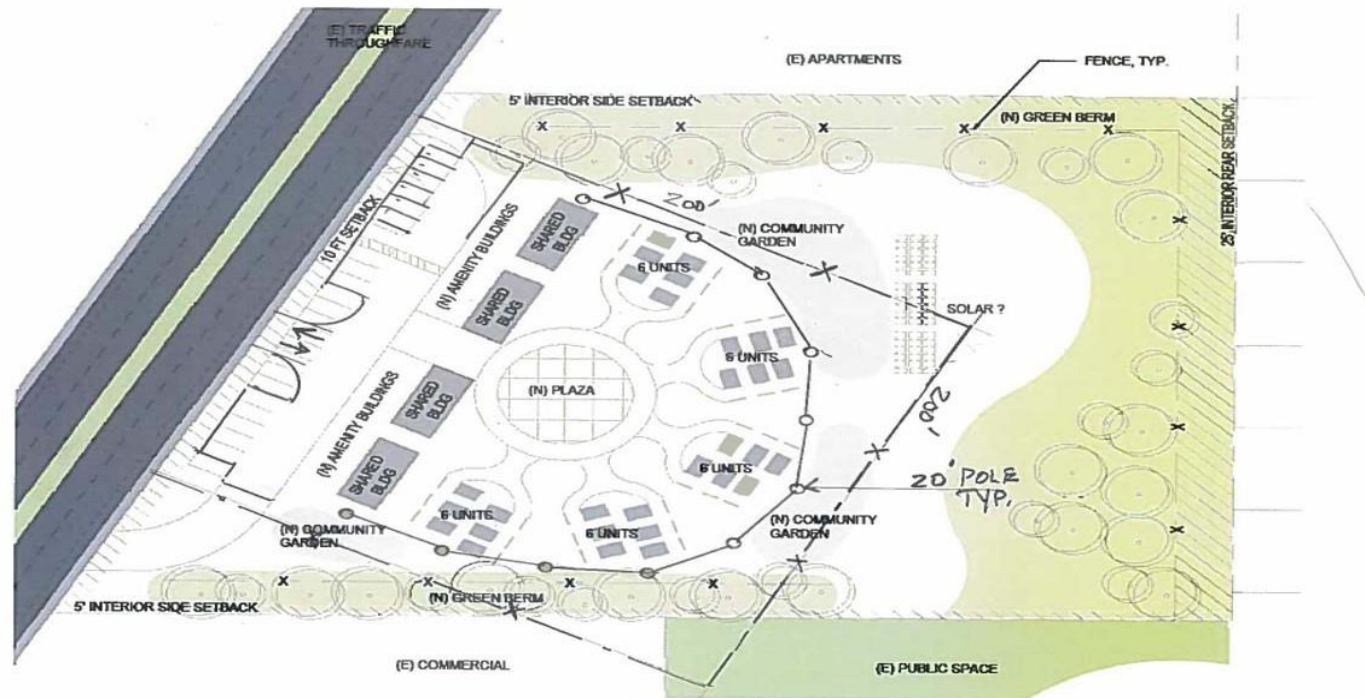
Provide minimum outline for building requirements

Requires Housing Plan

Habitat For Humanity Current and Past Projects



Bridge Housing Community Site Plans



*Details are still being developed.

Bridge Housing Community Building Types

CONSTRUCTION PLAN - LEVEL 01 (Sheet 3)
Facade (Sheet 7)
Section 1 Copy 1 (Sheet 2)
Back Elevation (Sheet 6)
Front Elevation (Sheet 8)
3D View - Single (Sheet 11)
3D View - Double (Sheet 07)

CITY OF SAN JOSE
OFFICE OF COMMUNITY DEVELOPMENT
GENSLER
DRAFT FOR PRICING
NO. 2021

**Details are still being developed.*

EAVE DETAIL (Sheet 14)
GUTTER DETAIL (Sheet 10)
WINDOW DETAIL (Sheet 13)
WALL BASE DETAIL (Sheet 12)

EAST ELEVATION (Sheet 06)
WEST ELEVATION (Sheet 05)
Section B (Sheet 09)
Section A (Sheet 08)

NORTH ELEVATION (Sheet 04)
SOUTH ELEVATION (Sheet 03)

CONSTRUCTION PLAN - ROOF (Sheet 02)
CONSTRUCTION PLAN - LEVEL 01 (Sheet 01)

LEGEND
GENERAL NOTES

CITY OF SAN JOSE
OFFICE OF COMMUNITY DEVELOPMENT
GENSLER
NO. 2021

HomeFirst- The Who, What, & How

The Vision: An interim housing option that provides adult individuals with a safe, private and secure community to build their civic engagement and self-sufficiency skills while searching for permanent housing.

▶ **Who:**

- ← 40 individuals with a stable income or clear path to income stability

▶ **What Services:**

- ← Case management
- ← Work Shops
- ← Resources
- ← Access to housing subsidies
- ← Site rules, requirements and expectations

**Details are still being developed.*

BHC Resident Selection Process

Step 1

Vulnerability Assessment through the Counties Coordinated Assessment

BHC Referrals must meet score within Rapid Rehousing Range for individuals.

- Non-Chronic (scored lower on the vulnerability scale)
- Individuals have income
- Individuals are homeless.

Step 2

Housing Assessment & Referrals

Rapid Re-Housing Agencies connect individuals with Housing options:

- Affordable Housing Apartments
- Participating Market Rate Apartments
- Interim Housing

Step 3

BHC Screening

HomeFirst screens potential applicants using BHC screening criteria

- Working or Work ready adults
- Pass background check
- Have case management

Step 4

Acceptance Into BHC Program

Site Governance & Community Engagement

- ▶ Collaborative management - BHC residents will be required to participate in site operations and management
- ▶ On site governance will be a partnership with BHC residents, HF staff, SJ City staff, CFSV
- ▶ An "Advisory Committee" will be created including partners, residents and neighbors

Benefits and Opportunities

BHC Residents

- Safe, stable place to live
- Participation in site management
- Supportive services
- Neighborhood engagement
- Communal activities
- Skill building Opportunities

Neighborhood Residents

- Access to BHC Site amenities
- Participate in BHC cabin build
- Participation in engagement activities
- Donate Talent
- Advisory Council participation
- Involvement in community

Guidelines for Conversation

- ▶ Use Common Courtesy
- ▶ Think of what you need to know
- ▶ Keep it safe – no disruptions

Group Discussion Questions

- ▶ What is your interest in BHC?
- ▶ What are your thoughts on the site plan layout as well as the design of the buildings proposed for the development?
- ▶ How can the operations and services provided at the BHC help ensure successful integration into the surrounding community?
- ▶ How can we partner with the community to create a positive relationship between the Bridge Housing Communities and the broader community? How can the BHC Advisory Group assist in this process?

Next Steps- Continuing the Conversation

- Environmental Review – Approximately 20 weeks
- Incorporate community input into work plan
- Return to City Council – Summer 2018/ Fall 2018

Bridge Housing Communities Contacts

- ▶ Visit our website at <http://www.sanjoseca.gov/bridgehousingcommunities>
- ▶ Email us at bridgehousingcommunities@sanjoseca.gov
- ▶ Call us at (408) 535-8234
- ▶ Write down any remaining comments, questions, or concerns on a comment card.