

What to Recycle

Remember to:

1. Empty and scrape all containers.
2. Flatten cartons and boxes. Place them inside your recycling bin or cart.
3. Secure shredded paper and textiles inside a clear plastic bag.
4. Not necessary to bag recyclables.

PLASTICS

All plastic items labeled with the numbers ♻️ through ♻️, like:

- Soda, water, mouthwash, and mustard containers
- Detergent bottles, flower pots, milk jugs, shampoo bottles, spray bottles, yogurt and margarine tubs
- PVC pipe, hard plastic toys, compact disc cases
- Medicine bottles, squeezable bottles (e.g., honey)
- Large reusable water bottles, juice jugs
- Clear take-out clamshells

Return clean plastic bags to grocery store for recycling.
Soiled plastic bags and polystyrene foam go in the garbage.

CANS & CARTONS

Beverage cartons and boxes (e.g., juice, milk, cream)

Tin, aluminum, and steel cans and lids:

- Food and beverage cans (e.g., soda, tuna, soup, pet food)

GLASS

Glass bottles and jars (all colors)

GARBAGE DUMPSTER

The following items must go in your garbage dumpster, **NOT** in your recycling bin or cart:

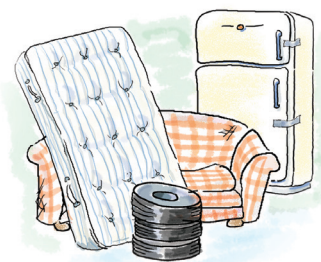
- Compostable plastics
- Diapers
- Dirty plastic bags
- Food
- Food-soiled containers, napkins, and tissues
- Pet waste
- Pizza boxes
- Plastic utensils and straws
- Polystyrene foam
- Snack bags and wrappers

HOUSEHOLD HAZARDOUS WASTE (HHW)



Schedule a FREE drop-off appointment, visit www.hhw.org or call (408) 299-7300 to get rid of batteries, chemicals, electronics, fluorescent light bulbs, helium and propane tanks, medicine, paint, syringes, and more.

FREE JUNK PICKUP



Call your recycling collection company to schedule FREE curbside pickups of large items such as mattresses, sofas, refrigerators, tires, and more. Learn more: www.sjenvironment.org/junkpickup

PAPER & CARDBOARD

Cardboard, shoe boxes, cereal and cracker boxes (remove liners)

Catalogs, magazines, newspapers, phone books, hard/soft cover books

Egg cartons (no polystyrene cartons)

Gift wrap (no metallic/foil)

Mail, envelopes, advertisements (gloss and plastic windows OK)

Office paper (e.g., construction, printer, and shredded)

Paper shopping bags

Food-soiled paper such as paper plates and pizza boxes go in the garbage.

SCRAP METALS

Clean aluminum foil and trays

Small metal appliances (e.g., toaster, waffle iron, blender)

Metal lids and caps from glass bottles, keys

Empty paint cans and lids (separated)

Empty aerosol cans

Metal pots and pans

TEXTILES

Clean cotton, linen, polyester, rayon and wool fabrics (e.g., blankets, sheets, clothes)



Apartments & Condos Setout Instructions

Place your garbage in the GREEN dumpster and your recyclables in the WHITE bin or BLUE carts.

Bins and carts must always be accessible for easy collection by the hauling trucks — never block the bins or carts with your vehicle, furniture, or other oversized items.



No garbage in recycling (blue carts or white bin)

All household garbage goes in the garbage dumpster. This way, recyclables are kept clean.

Weekly collection

Collection for all materials occurs between 6 a.m. and 6 p.m. Frequency of collection varies by complex; contact your property manager for details.



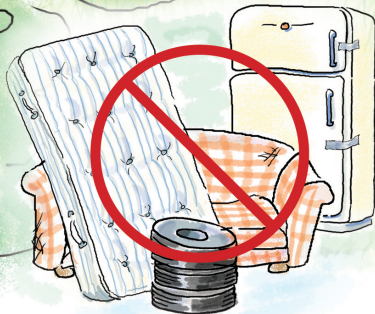
Oversized items require special handling

Do not place furniture, electronic equipment, or other oversized items in the street, garbage dumpster, or recycling bin; call your property manager or GreenTeam to arrange free junk pickups.

Call (408) 535-3500 or use the [my sanjose](#) app (www.sanjoseca.gov/mysanjose) to report illegal dumping. **Illegal dumping is a crime, with fines up to \$10,000.**

Flatten boxes

Always flatten cardboard boxes before placing them in the recycling bin or cart. This helps make room for more recyclables.



Recycling and Waste Collection

GreenTeam (408) 282-4400 • www.greenteam.com:

For assistance with garbage, recycling, and free junk pickup for all apartments and condominiums with communal garbage dumpster service.

Contact your property manager or GreenTeam:

- Report a damaged bin or cart
- Report a missed collection or other service issues
- Schedule free junk pickups of large items such as mattresses, sofas, refrigerators, tires, and more

Recycling Information

www.sjenvironment.org/residents

- For information related to residential recycling collection

www.sjenvironment.org/lookup

- Find street sweeping and collection days

www.sjenvironment.org/recycleright

- For more recycling tips

www.sanjoseca.gov/utilityrates

- View current rate information

Follow us on social media @SJenvironment #keepSJclean



Information is provided by the City of San José and GreenTeam.

♻️ Printed on recycled paper with 100% soy-based VOC-free inks.

1018/Online Only/VL/kz



In accordance with the Americans with Disabilities Act, City of San José Environmental Services Department materials can be made available upon request in alternative formats, such as Braille, large print, audiotape or computer disk. Requests may be made by calling (408) 535-3500 (voice) or (800) 735-2929 (California Relay Service).