

**OWNER'S STATEMENT**

WE HEREBY STATE THAT WE ARE THE OWNERS OF OR HAVE SOME RIGHT, TITLE OR INTEREST IN AND TO THE REAL PROPERTY INCLUDED WITHIN THE SUBDIVISION SHOWN ON THE MAP; THAT WE ARE THE ONLY PERSONS WHOSE CONSENT IS NECESSARY TO PASS A CLEAR TITLE TO SAID REAL PROPERTY; AND THAT WE HEREBY CONSENT TO THE MAKING OF SAID MAP AND SUBDIVISION AS SHOWN WITHIN THE DISTINCTIVE BORDER LINE AND ALL DEDICATIONS AND OFFERS OF DEDICATION THEREIN.

WE ALSO HEREBY DEDICATE TO PUBLIC USE EASEMENTS FOR ANY AND ALL PUBLIC SERVICE FACILITIES INCLUDING POLES, WIRES, CONDUITS, GAS, WATER, HEAT MAINS AND ALL APPURTENANCES TO THE ABOVE, UNDER, UPON, OR OVER THOSE CERTAIN STRIPS OF LAND LYING BETWEEN THE FRONT AND/OR SIDE LINES OF LOTS AND THE DASHED LINES AND/OR THOSE CERTAIN AREAS LYING BETWEEN DASHED LINES EACH DESIGNATED AS "PSE" (PUBLIC SERVICE EASEMENT). THE ABOVE MENTIONED PUBLIC SERVICE EASEMENTS TO BE KEPT OPEN AND FREE FROM BUILDINGS AND STRUCTURES OF ANY KIND EXCEPT PUBLIC SERVICE STRUCTURES, IRRIGATION SYSTEMS AND APPURTENANCES THERETO, LAWFUL FENCES AND ALL LAWFUL UNSUPPORTED ROOF OVERHANGS.

WE ALSO HEREBY COVENANT TO THE CITY OF SAN JOSE PURSUANT TO THE CALIFORNIA GOVERNMENT CODE (SECTIONS 65870 - 65875) AND PART 1 OF CHAPTER 20.110 OF TITLE 20 OF THE SAN JOSE MUNICIPAL CODE THAT AN EASEMENT FOR PARKING, INGRESS, EGRESS, EMERGENCY ACCESS AND/OR ACCESS TO AND OPERATION AND MAINTENANCE OF A STORMWATER TREATMENT MEASURE PURPOSES IS CREATED UPON THE RECORDING OF THIS MAP, FOR THE BENEFIT OF LOTS 1 THROUGH 100 AND SAID PURPOSES ARE INDICATED ON THE MAP. SAID EASEMENT IS NOT INTENDED FOR THE USE OF THE GENERAL PUBLIC BUT IS INTENDED FOR THE EXCLUSIVE USE OF THE PARCELS BENEFITED. SAID EASEMENT IS TO BE KEPT OPEN AND FREE OF SURFACE STRUCTURES OF ANY KIND. SAID EASEMENT SHALL NOT BE MODIFIED OR RELEASED WITHOUT THE PRIOR APPROVAL OF THE CITY IN THE MANNER REQUIRED BY APPLICABLE LAW.

THERE IS ALSO SHOWN ON THE HEREON MAP, EASEMENTS FOR STORM DRAINAGE PURPOSES AND SANITARY SEWER PURPOSES DESIGNATED AND DELINEATED AS "PSDE" (PRIVATE STORM DRAINAGE EASEMENT) AND "PSSE" (PRIVATE SANITARY SEWER EASEMENT) INCLUDING THE INSTALLATION AND MAINTENANCE OF PRIVATE STORM AND PRIVATE SANITARY SEWER FACILITIES. THESE EASEMENTS ARE TO BE KEPT OPEN AND FREE FROM ALL BUILDINGS AND STRUCTURES OF ANY KIND, EXCEPT IRRIGATION SYSTEMS AND APPURTENANCES THERETO, LAWFUL FENCES AND ALL LAWFUL UNSUPPORTED ROOF OVERHANGS. THE MAINTENANCE, REPAIR AND/OR REPLACEMENT OF PRIVATE STORM DRAINAGE AND PRIVATE SANITARY SEWER FACILITIES SHALL BE THE SOLE RESPONSIBILITY OF THE PROPERTY OWNERS BENEFITED, AS DETERMINED BY THE APPROPRIATE COVENANTS, CONDITIONS, AND RESTRICTIONS. SAID EASEMENTS ARE NOT OFFERED, NOR ARE THEY ACCEPTED, FOR DEDICATION BY THE CITY OF SAN JOSE.

THERE IS ALSO SHOWN ON THE HEREON MAP, AN EASEMENT FOR SURFACE DRAINAGE RELEASE PURPOSES, DESIGNATED AND DELINEATED AS "PSDR" (PRIVATE SURFACE DRAINAGE RELEASE EASEMENT) FOR SURFACE FLOW OF STORMWATER ON OR OVER THAT CERTAIN STRIP OF LAND WHICH LIES WITHIN LOTS 101 THROUGH 111 FOR THE BENEFIT OF LOTS 1 THROUGH 100. THIS EASEMENT IS TO BE KEPT OPEN AND FREE FROM BUILDINGS AND STRUCTURES OF ANY KIND, EXCEPT IRRIGATION SYSTEMS AND APPURTENANCES THERETO LAWFUL FENCES AND ALL LAWFUL UNSUPPORTED ROOF OVERHANGS. FURTHER, THE SURFACE ELEVATIONS OF SAID EASEMENT SHALL NOT BE ALTERED WITHOUT THE WRITTEN CONSENT OF PARCEL OWNER BENEFITED. THE MAINTENANCE, REPAIR, AND/OR REPLACEMENT OF PRIVATE SURFACE DRAINAGE RELEASE FACILITIES SHALL BE THE SOLE RESPONSIBILITY OF THE PARCEL OWNER BENEFITED, AS DETERMINED BY THE APPROPRIATE COVENANTS, CONDITIONS, AND RESTRICTIONS. SAID EASEMENT IS NOT OFFERED, NOR IS IT ACCEPTED FOR DEDICATION BY THE CITY OF SAN JOSE.

THE PRIVATE STREETS CONTAINED WITHIN THIS TRACT ARE NOT OFFERED NOR ACCEPTED FOR DEDICATION FOR PUBLIC STREET PURPOSES.

AS OWNER: LENNAR HOMES OF CALIFORNIA, INC, A CALIFORNIA CORPORATION

BY: Gordon D. Jones  
NAME: Gordon D. Jones  
TITLE: Vice President

**TRACT NO. 10207  
MONTECITO VISTA  
URBAN VILLAGE LOT 4**

CONSISTING OF 10 SHEETS  
BEING A SUBDIVISION OF LOT 4 OF TRACT NO. 9831,  
RECORDED IN BOOK 808 OF MAPS, AT PAGE 40, SANTA CLARA COUNTY  
RECORDS, LYING ENTIRELY WITHIN  
CITY OF SAN JOSE, SANTA CLARA COUNTY, STATE OF CALIFORNIA

**Carlson, Barbee & Gibson, Inc.**

CIVIL ENGINEERS • SURVEYORS • PLANNERS  
SAN RAMON, CALIFORNIA

MAY 2014

**CITY ENGINEER'S STATEMENT**

I HEREBY STATE THAT I HAVE EXAMINED THE HEREON FINAL MAP OF TRACT 10207; THAT THE SUBDIVISION AS SHOWN HEREON IS SUBSTANTIALLY THE SAME AS IT APPEARED ON THE TENTATIVE MAP AND ANY APPROVED ALTERATIONS THEREOF; THAT ALL PROVISIONS OF THE SUBDIVISION MAP ACT, AS AMENDED, AND OF ANY LOCAL ORDINANCE APPLICABLE AT THE TIME OF APPROVAL OF THE TENTATIVE MAP HAVE BEEN COMPLIED WITH.

I ALSO HEREBY STATE THAT IN CONFORMANCE WITH THE DELEGATION SET FORTH IN ORDINANCE NO. 26386, I APPROVE THIS MAP DESIGNATED AS TRACT 10207, CONSISTING OF 10 SHEETS, ON THE 6TH DAY OF JUNE, 2014. AND THAT I DID ACCEPT, ON BEHALF OF THE CITY OF SAN JOSE, THE DEDICATION OF ALL EASEMENTS OFFERED FOR DEDICATION AS SHOWN ON SAID MAP WITHIN SAID SUBDIVISION.

6/5/14  
DATE

D. Sykes  
DAVID SYKES, R.C.E. #53834  
CITY OF SAN JOSE, CALIFORNIA



**APPROVAL BY THE DIRECTOR OF PLANNING**

I STATE THAT THIS FINAL MAP HAS BEEN CHECKED AND COMPLIES WITH THE TENTATIVE MAP (PT13-001) AND ITS CONDITIONS AS APPROVED ON THE 7TH DAY OF JUNE, 2013.

PURSUANT TO THE CALIFORNIA GOVERNMENT CODE (SECTIONS 65870 - 65875) AND PART 1 OF CHAPTER 20.110 OF TITLE 20 OF THE SAN JOSE MUNICIPAL CODE, I HEREBY ACCEPT ON BEHALF OF THE CITY OF SAN JOSE A COVENANT OF EASEMENT SHOWN ON THE HEREIN MAP AND DESCRIBED HEREON. SAID EASEMENT HAS BEEN A CONDITION OF APPROVAL OF TENTATIVE MAP NO. PT13-001.

HARRY FREITAS  
DIRECTOR OF PLANNING  
OF THE CITY OF SAN JOSE, CALIFORNIA

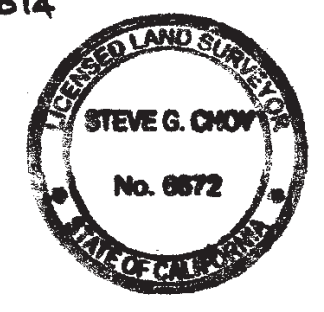
BY: [Signature]  
DATE: May 28, 2014 DEPUTY

**CITY LAND SURVEYOR'S STATEMENT**

I HEREBY STATE THAT I HAVE EXAMINED THE HEREON SUBDIVISION MAP AND I AM SATISFIED THAT SAID MAP IS TECHNICALLY CORRECT.

06/02/2014  
DATE

[Signature]  
STEVE G. CHOY, L.S. 8672  
CITY OF SAN JOSE, CALIFORNIA



**SURVEYOR'S STATEMENT**

THIS MAP WAS PREPARED BY ME OR UNDER MY DIRECTION AND IS BASED UPON A FIELD SURVEY IN CONFORMANCE WITH THE REQUIREMENTS OF THE SUBDIVISION MAP ACT AND LOCAL ORDINANCE AT THE REQUEST OF LENNAR HOMES OF CALIFORNIA IN JULY 2013. I HEREBY STATE THAT ALL THE MONUMENTS ARE OF THE CHARACTER AND OCCUPY THE POSITIONS INDICATED OR THAT THEY WILL BE SET IN THOSE POSITIONS BEFORE DECEMBER 31, 2016, AND THAT THE MONUMENTS ARE, OR WILL BE, SUFFICIENT TO ENABLE THE SURVEY TO BE RETRACED, AND THAT THIS FINAL MAP SUBSTANTIALLY CONFORMS TO THE APPROVED OR CONDITIONALLY APPROVED TENTATIVE MAP, IF ANY.

5/19/2014  
DATE

[Signature]  
CHRISTOPHER S. HARMISON, P.L.S.  
L.S. NO. 7176



**COUNTY RECORDER'S STATEMENT**

FILE NO.: 22637113 FEE \$25.00 PAID, ACCEPTED FOR RECORD AND FILED THIS 02 DAY OF July, 2014, AT 2:08 P.M. IN BOOK 873 OF MAPS AT PAGE(S) 17-26, SANTA CLARA COUNTY RECORDS, AT THE REQUEST OF NORTH AMERICAN TITLE COMPANY.

REGINA ALCOMENDRAS, COUNTY RECORDER  
SANTA CLARA COUNTY, CALIFORNIA

BY: [Signature]  
DEPUTY

22637113

BK873  
pg 17/21

X  
17

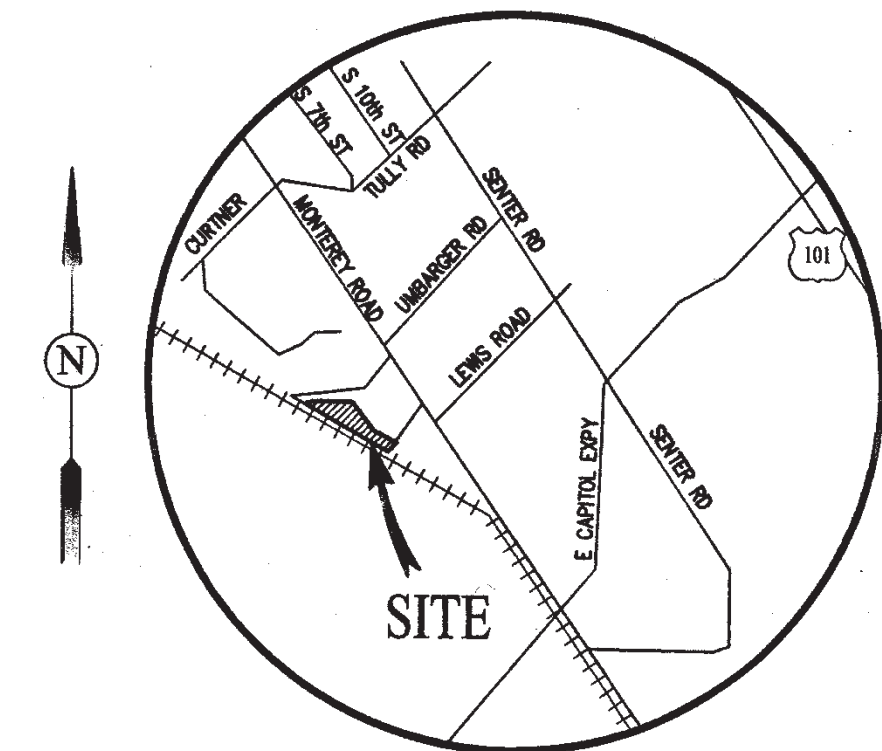
TRACT NO. 10207  
 MONTECITO VISTA  
 URBAN VILLAGE LOT 4

CONSISTING OF 10 SHEETS  
 BEING A SUBDIVISION OF LOT 4 OF TRACT NO. 9831,  
 RECORDED IN BOOK 808 OF MAPS, AT PAGE 40, SANTA CLARA COUNTY  
 RECORDS, LYING ENTIRELY WITHIN  
 CITY OF SAN JOSE, SANTA CLARA COUNTY, STATE OF CALIFORNIA

**Carlson, Barbee & Gibson, Inc.**

CIVIL ENGINEERS • SURVEYORS • PLANNERS  
 SAN RAMON, CALIFORNIA

MAY 2014



VICINITY MAP  
 NOT TO SCALE

OWNER'S ACKNOWLEDGEMENT

STATE OF CALIFORNIA SS.  
 COUNTY OF SANTA CLARA Contra Costa

ON May 21, 2014, 2014 BEFORE ME, Jessica Doughty, A NOTARY PUBLIC, PERSONALLY APPEARED Gordon D. Jones WHO PROVED TO ME ON THE BASIS OF SATISFACTORY EVIDENCE TO BE THE PERSON(S) WHOSE NAME(S) IS/ARE SUBSCRIBED TO THE WITHIN INSTRUMENT AND ACKNOWLEDGED TO ME THAT HE/SHE/THEY EXECUTED THE SAME IN HIS/HER/THEIR AUTHORIZED CAPACITY(IES), AND THAT BY HIS/HER/THEIR SIGNATURE(S) ON THE INSTRUMENT THE PERSON(S), OR THE ENTITY UPON BEHALF OF WHICH THE PERSON(S) ACTED, EXECUTED THE INSTRUMENT.

I CERTIFY UNDER PENALTY OF PERJURY UNDER THE LAWS OF THE STATE OF CALIFORNIA THAT THE FOREGOING PARAGRAPH IS TRUE AND CORRECT.

WITNESS MY HAND:

NOTARY'S SIGNATURE: Jessica Doughty  
 PRINTED NOTARY'S NAME: Jessica Doughty  
 NOTARY'S PRINCIPAL PLACE OF BUSINESS: Contra Costa County  
 NOTARY'S COMMISSION NO.: 1901088  
 EXPIRATION OF NOTARY'S COMMISSION: Sep. 19, 2014

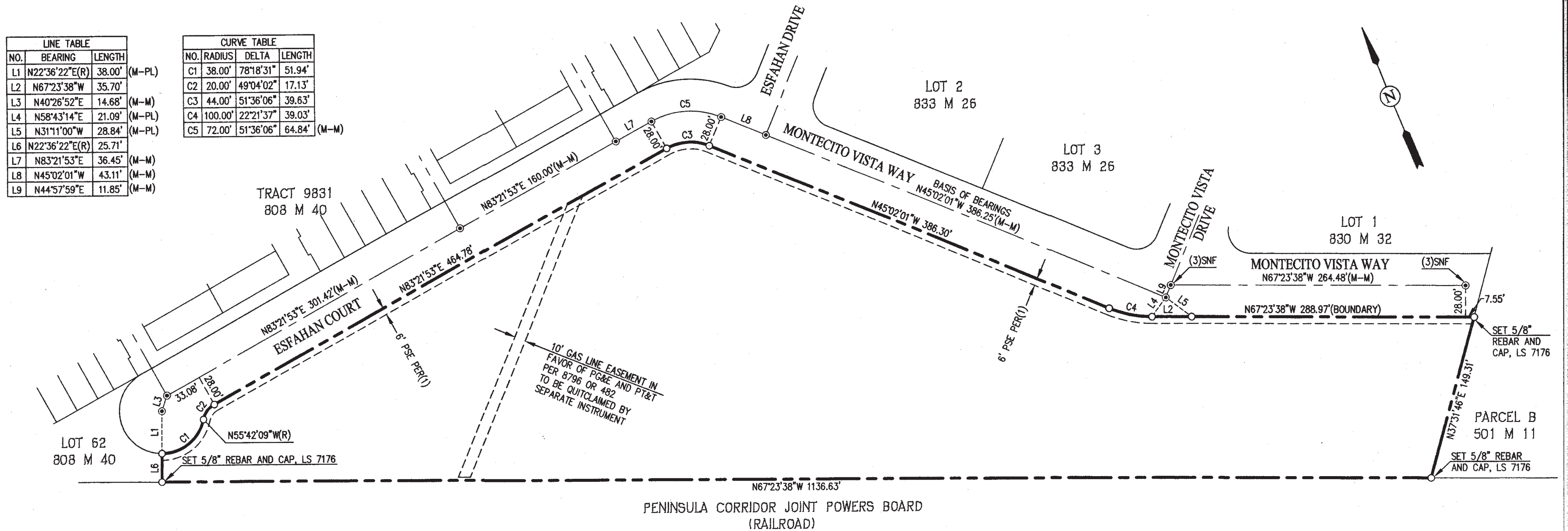
SOILS AND GEOLOGICAL REPORT

A SOILS REPORT AND/OR GEOLOGICAL REPORT ON THIS PROPERTY HAS BEEN PREPARED BY EARTH SYSTEMS PACIFIC, DATED MAY 14, 2012, A COPY OF WHICH HAS BEEN FILED WITH THE CITY OF SAN JOSE.

BK 873  
 1618/26

NO.	BEARING	LENGTH	
L1	N22°36'22"E(R)	38.00'	(M-PL)
L2	N67°23'38"W	35.70'	
L3	N40°26'52"E	14.68'	(M-M)
L4	N58°43'14"E	21.09'	(M-PL)
L5	N31°11'00"W	28.84'	(M-PL)
L6	N22°36'22"E(R)	25.71'	
L7	N83°21'53"E	36.45'	(M-M)
L8	N45°02'01"W	43.11'	(M-M)
L9	N44°57'59"E	11.85'	(M-M)

NO.	RADIUS	DELTA	LENGTH	
C1	38.00'	78°18'31"	51.94'	
C2	20.00'	49°04'02"	17.13'	
C3	44.00'	51°36'06"	39.63'	
C4	100.00'	22°21'37"	39.03'	
C5	72.00'	51°36'06"	64.84'	(M-M)



### BASIS OF BEARINGS

THE BASIS OF BEARINGS FOR THIS SURVEY IS DETERMINED BY FOUND MONUMENTS IN THE CENTERLINE OF MONTECITO VISTA WAY, THE BEARING BEING N45°02'01"W PER TRACT NO. 9831 (808 M 40).

### REFERENCES

- (#) INDICATES REFERENCE NUMBER.  
 (1) TRACT NO. 9831 (808 M 40)  
 (2) TRACT NO. 9992 (833 M 26)  
 (3) TRACT NO. 10024 (830 M 32)  
 (4) CERTIFICATE OF CORRECTION (DOC. NO. 22508682)

### EASEMENT NOTES:

SUBJECT TO AN EASEMENT LIGHT, SOUND, ODOR, DUST, EXHAUST, AND INDUSTRIAL EMISSIONS IN FAVOR OF RAISCH INVESTMENT GROUP, LTD., ET AL., DOCUMENT NO. 16580296 OF OFFICIAL RECORDS, THE LOCATION OF SAID EASEMENT IS NOT DEFINED OF RECORD.

### NOTES

- ALL DISTANCES AND DIMENSIONS SHOWN HEREON ARE IN FEET AND DECIMALS THEREOF.
- THE AREA WITHIN THE DISTINCTIVE BORDER LINE IS 4.88 ACRES, MORE OR LESS.
- THE DISTINCTIVE BORDER LINE DENOTES THE BOUNDARY OF THE SUBDIVISION.
- NO BUILDING PERMIT ALLOWED FOR LOT 4 PER 808 M 40, PRIOR TO THE ABANDONMENT OF THE PG&E EASEMENT 8796 OR 482.

### LEGEND

	DISTINCTIVE BORDER
	LOT LINE
	ADJOINER LOT LINE
	EASEMENT LINE
	CENTERLINE
(T)	TOTAL
(R)	RADIAL
(M-M)	MONUMENT TO MONUMENT
(M-PL)	MONUMENT TO PROPERTY LINE
(#)	INDICATES REFERENCE NUMBER
⊙	SET STANDARD STREET MONUMENT, 2 1/2" BRASS DISC STAMPED LS 7176, SET IN CONCRETE IN WELL WITH ROUND FRAME AND COVER
⊙	FOUND STANDARD STREET MONUMENT, 2 1/2" BRASS DISC STAMPED LS 6868, SET IN CONCRETE IN WELL WITH ROUND FRAME AND COVER PER (4), OR AS NOTED
⊙	SET NAIL, TAGGED LS 7176, EPOXIED IN CONCRETE SIDEWALK OR TOP OF CURB, AT APPROXIMATE CENTERLINE TOP OF CURB, AS REFERENCE MONUMENT.
○	SET NAIL TAGGED LS 7176, EPOXIED IN CONCRETE, AT BACK OF WALK ON PROPERTY CORNER, OR AS NOTED
COE	COVENANT OF EASEMENT
EX	EXISTING
EAE	EMERGENCY ACCESS EASEMENT
IEE	INGRESS AND EGRESS EASEMENT
PSDE	PRIVATE STORM DRAIN EASEMENT
PSDRE	PRIVATE SURFACE DRAIN RELEASE EASEMENT
PSSE	PRIVATE SANITARY SEWER EASEMENT
PSE	PUBLIC SERVICE EASEMENT
SNF	SEARCHED FOR, NOT FOUND

## TRACT NO. 10207 MONTECITO VISTA URBAN VILLAGE LOT 4

CONSISTING OF 10 SHEETS  
 BEING A SUBDIVISION OF LOT 4 OF TRACT NO. 9831,  
 RECORDED IN BOOK 808 OF MAPS, AT PAGE 40, SANTA CLARA COUNTY  
 RECORDS, LYING ENTIRELY WITHIN  
 CITY OF SAN JOSE, SANTA CLARA COUNTY, STATE OF CALIFORNIA

**Carlson, Barbee & Gibson, Inc.**

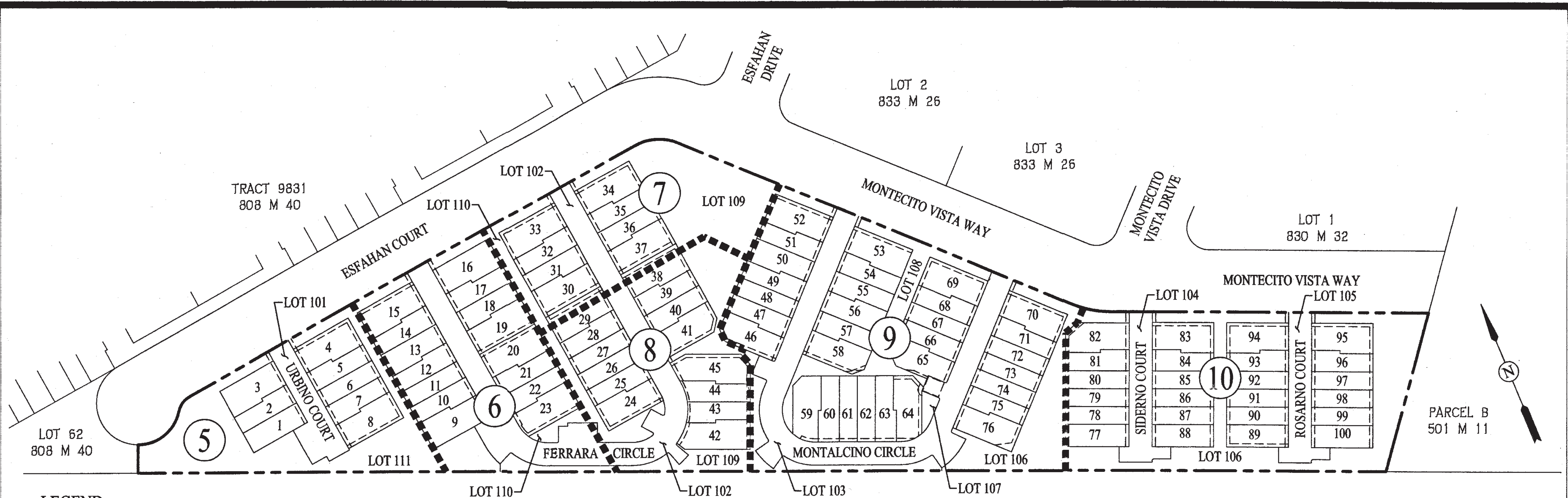
CIVIL ENGINEERS • SURVEYORS • PLANNERS  
 SAN RAMON, CALIFORNIA

SCALE: 1" = 60' MAY 2014



GRAPHIC SCALE

BK 873  
Pg 19/26



**LEGEND**

- DISTINCTIVE BORDER
- LOT LINE
- ADJOINER LOT LINE
- - - EASEMENT LINE
- CENTERLINE
- (T) TOTAL
- (R) RADIAL
- (M-M) MONUMENT TO MONUMENT
- (M-PL) MONUMENT TO PROPERTY LINE
- (#) INDICATES REFERENCE NUMBER
- ⊙ SET STANDARD STREET MONUMENT, 2 1/2" BRASS DISC STAMPED LS 7176, SET IN CONCRETE IN WELL WITH ROUND FRAME AND COVER
- FOUND STANDARD STREET MONUMENT, 2 1/2" BRASS DISC STAMPED LS 6868, SET IN CONCRETE IN WELL WITH ROUND FRAME AND COVER PER (4), OR AS NOTED
- ⊙ SET NAIL, TAGGED LS 7176, EPOXIED IN CONCRETE SIDEWALK OR TOP OF CURB, AT APPROXIMATE CENTERLINE TOP OF CURB, AS REFERENCE MONUMENT.
- SET NAIL TAGGED LS 7176, EPOXIED IN CONCRETE, AT BACK OF WALK ON PROPERTY CORNER, OR AS NOTED
- COE COVENANT OF EASEMENT
- EX EXISTING
- EAE EMERGENCY ACCESS EASEMENT
- IEE INGRESS AND EGRESS EASEMENT
- PSDE PRIVATE STORM DRAIN EASEMENT
- PSDRE PRIVATE SURFACE DRAIN RELEASE EASEMENT
- PSSE PRIVATE SANITARY SEWER EASEMENT
- PSE PUBLIC SERVICE EASEMENT
- SNF SEARCHED FOR, NOT FOUND
- SHEET LIMIT
- ⊙ # SHEET NUMBER

**BASIS OF BEARINGS**

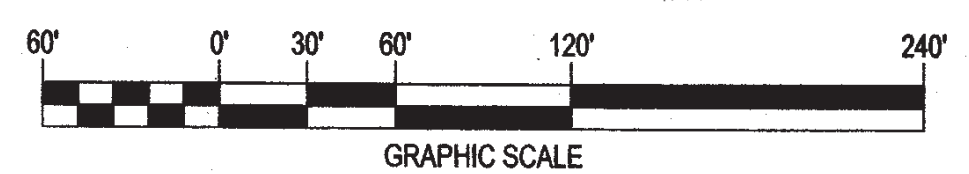
THE BASIS OF BEARINGS FOR THIS SURVEY IS DETERMINED BY FOUND MONUMENTS IN THE CENTERLINE OF MONTECITO VISTA WAY, THE BEARING BEING N45°02'01"W PER TRACT NO. 9831 (808 M 40).

**TRACT NO. 10207  
MONTECITO VISTA  
URBAN VILLAGE LOT 4**

CONSISTING OF 10 SHEETS  
BEING A SUBDIVISION OF LOT 4 OF TRACT NO. 9831,  
RECORDED IN BOOK 808 OF MAPS, AT PAGE 40, SANTA CLARA COUNTY  
RECORDS, LYING ENTIRELY WITHIN  
CITY OF SAN JOSE, SANTA CLARA COUNTY, STATE OF CALIFORNIA

**Carlson, Barbee & Gibson, Inc.**  
CIVIL ENGINEERS • SURVEYORS • PLANNERS  
SAN RAMON, CALIFORNIA

SCALE: 1" = 60' MAY 2014



BK 873  
Pg 20/26

**BASIS OF BEARINGS**

THE BASIS OF BEARINGS FOR THIS SURVEY IS DETERMINED BY FOUND MONUMENTS IN THE CENTERLINE OF MONTECITO VISTA WAY, THE BEARING BEING N45°02'01"W PER TRACT NO. 9831 (808 M 40).

**LEGEND**

- DISTINCTIVE BORDER
- LOT LINE
- ADJOINER LOT LINE
- EASEMENT LINE
- CENTERLINE
- (T) TOTAL
- (R) RADIAL
- (M-M) MONUMENT TO MONUMENT
- (M-PL) MONUMENT TO PROPERTY LINE
- (#) INDICATES REFERENCE NUMBER
- ⊙ SET STANDARD STREET MONUMENT, 2 1/2" BRASS DISC STAMPED LS 7176, SET IN CONCRETE IN WELL WITH ROUND FRAME AND COVER
- ⊙ FOUND STANDARD STREET MONUMENT, 2 1/2" BRASS DISC STAMPED LS 6868, SET IN CONCRETE IN WELL WITH ROUND FRAME AND COVER PER (#), OR AS NOTED
- ⊙ SET NAIL, TAGGED LS 7176, EPOXIED IN CONCRETE SIDEWALK OR TOP OF CURB, AT APPROXIMATE CENTERLINE TOP OF CURB, AS REFERENCE MONUMENT.
- SET NAIL TAGGED LS 7176, EPOXIED IN CONCRETE, AT BACK OF WALK ON PROPERTY CORNER, OR AS NOTED
- COE COVENANT OF EASEMENT
- EX EXISTING
- EAE EMERGENCY ACCESS EASEMENT
- IEE INGRESS AND EGRESS EASEMENT
- PSDE PRIVATE STORM DRAIN EASEMENT
- PSDR PRIVATE SURFACE DRAIN RELEASE EASEMENT
- PSSE PRIVATE SANITARY SEWER EASEMENT
- PSE PUBLIC SERVICE EASEMENT
- SNF SEARCHED FOR, NOT FOUND

**REFERENCES**

- (#) INDICATES REFERENCE NUMBER.
- (1) TRACT NO. 9831 (808 M 40)
- (2) TRACT NO. 9992 (833 M 26)
- (3) TRACT NO. 10024 (830 M 32)
- (4) CERTIFICATE OF CORRECTION (DOC. NO. 22508682)

**TRACT NO. 10207  
MONTECITO VISTA  
URBAN VILLAGE LOT 4**

CONSISTING OF 10 SHEETS  
BEING A SUBDIVISION OF LOT 4 OF TRACT NO. 9831,  
RECORDED IN BOOK 808 OF MAPS, AT PAGE 40, SANTA CLARA COUNTY  
RECORDS, LYING ENTIRELY WITHIN  
CITY OF SAN JOSE, SANTA CLARA COUNTY, STATE OF CALIFORNIA

**Carlson, Barbee & Gibson, Inc.**

CIVIL ENGINEERS • SURVEYORS • PLANNERS  
SAN RAMON, CALIFORNIA

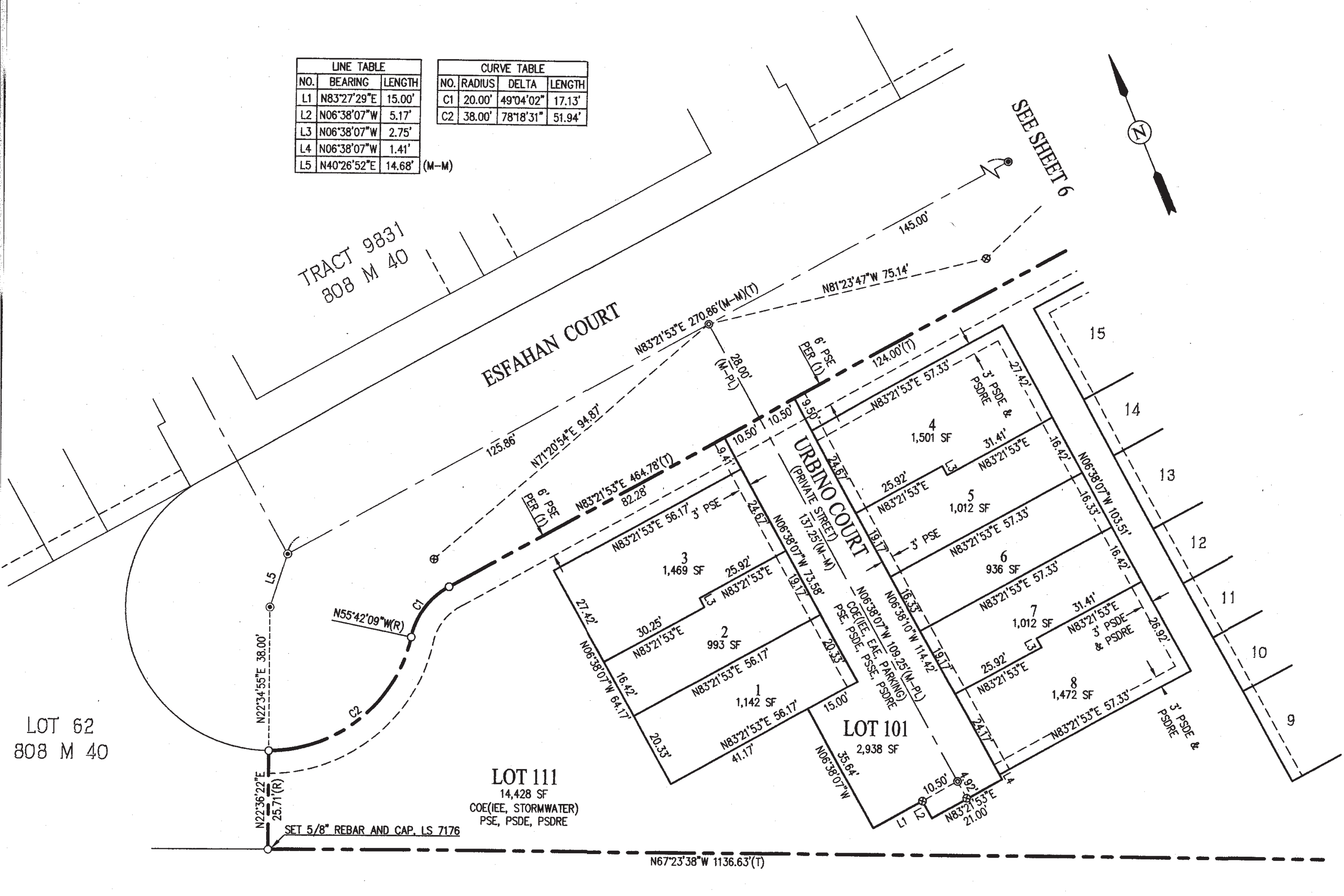
SCALE: 1" = 20' MAY 2014



LINE TABLE		
NO.	BEARING	LENGTH
L1	N83°27'29"E	15.00'
L2	N06°38'07"W	5.17'
L3	N06°38'07"W	2.75'
L4	N06°38'07"W	1.41'
L5	N40°26'52"E	14.68'

CURVE TABLE			
NO.	RADIUS	DELTA	LENGTH
C1	20.00'	49°04'02"	17.13'
C2	38.00'	78°18'31"	51.94'

(M-M)



PENINSULA CORRIDOR JOINT POWERS BOARD  
(RAILROAD)

Bk 873  
Pg 21/26

**BASIS OF BEARINGS**

THE BASIS OF BEARINGS FOR THIS SURVEY IS DETERMINED BY FOUND MONUMENTS IN THE CENTERLINE OF MONTECITO VISTA WAY, THE BEARING BEING N45°02'01"W PER TRACT NO. 9831 (808 M 40).

**LEGEND**

- DISTINCTIVE BORDER
- LOT LINE
- ADJOINER LOT LINE
- EASEMENT LINE
- CENTERLINE
- (T) TOTAL
- (R) RADIAL
- (M-M) MONUMENT TO MONUMENT
- (M-PL) MONUMENT TO PROPERTY LINE
- (#) INDICATES REFERENCE NUMBER
- SET STANDARD STREET MONUMENT, 2 1/2" BRASS DISC STAMPED LS 7176, SET IN CONCRETE IN WELL WITH ROUND FRAME AND COVER
- FOUND STANDARD STREET MONUMENT, 2 1/2" BRASS DISC STAMPED LS 6868, SET IN CONCRETE IN WELL WITH ROUND FRAME AND COVER PER (4), OR AS NOTED
- ⊙ SET NAIL, TAGGED LS 7176, EPOXIED IN CONCRETE SIDEWALK OR TOP OF CURB, AT APPROXIMATE CENTERLINE TOP OF CURB, AS REFERENCE MONUMENT.
- SET NAIL TAGGED LS 7176, EPOXIED IN CONCRETE, AT BACK OF WALK ON PROPERTY CORNER, OR AS NOTED
- COE COVENANT OF EASEMENT
- EX EXISTING
- EAE EMERGENCY ACCESS EASEMENT
- IEE INGRESS AND EGRESS EASEMENT
- PSE PRIVATE STORM DRAIN EASEMENT
- PSDR PRIVATE SURFACE DRAIN RELEASE EASEMENT
- PSSE PRIVATE SANITARY SEWER EASEMENT
- PSE PUBLIC SERVICE EASEMENT
- SNF SEARCHED FOR, NOT FOUND

LINE TABLE			CURVE TABLE			
NO.	BEARING	LENGTH	NO.	RADIUS	DELTA	LENGTH
L1	N67°23'38"W	8.50'	C1	29.50'	24°15'48"	12.49'
L2	N22°36'22"E	13.50'	C2	29.50'	36°29'43"	18.79'
L3	N22°38'36"E	3.00'	C3	1.50'	90°00'00"	2.36'
L4	N67°23'38"W	27.01'	C4	1.50'	90°04'51"	2.36'
L5	N22°38'47"E	16.50'	C5	29.50'	60°45'31"	31.28'
L6	N64°29'04"E	13.54'	C6	50.50'	39°40'27"	34.97'
L7	N06°38'07"W	2.75'	C7	1.50'	87°47'45"	2.30'
L8	N67°23'38"W	8.50'	C8	65.50'	19°19'04"	22.08'
L9	N83°21'53"E	25.25'	C9	40.00'	60°45'31"	42.42'
L10	N09°47'41"E	20.98'				
L11	N67°23'38"W	30.25'				
L12	N22°36'22"E	10.50'				



**REFERENCES**

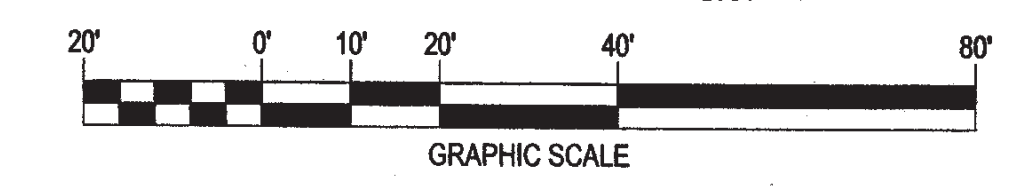
- (#) INDICATES REFERENCE NUMBER.
- (1) TRACT NO. 9831 (808 M 40)
- (2) TRACT NO. 9992 (833 M 26)
- (3) TRACT NO. 10024 (830 M 32)
- (4) CERTIFICATE OF CORRECTION (DOC. NO. 22508682)

**TRACT NO. 10207  
MONTECITO VISTA  
URBAN VILLAGE LOT 4**

CONSISTING OF 10 SHEETS  
BEING A SUBDIVISION OF LOT 4 OF TRACT NO. 9831,  
RECORDED IN BOOK 808 OF MAPS, AT PAGE 40, SANTA CLARA COUNTY  
RECORDS, LYING ENTIRELY WITHIN  
CITY OF SAN JOSE, SANTA CLARA COUNTY, STATE OF CALIFORNIA

**Carlson, Barbee & Gibson, Inc.**  
CIVIL ENGINEERS • SURVEYORS • PLANNERS  
SAN RAMON, CALIFORNIA

SCALE: 1" = 20' MAY 2014



BK 873  
Pg 22/26

22

**BASIS OF BEARINGS**

THE BASIS OF BEARINGS FOR THIS SURVEY IS DETERMINED BY FOUND MONUMENTS IN THE CENTERLINE OF MONTECITO VISTA WAY, THE BEARING BEING N45°02'01"W PER TRACT NO. 9831 (808 M 40).

**LEGEND**

- DISTINCTIVE BORDER
- LOT LINE
- ADJOINER LOT LINE
- EASEMENT LINE
- CENTERLINE
- (T) TOTAL
- (R) RADIAL
- (M-M) MONUMENT TO MONUMENT
- (M-PL) MONUMENT TO PROPERTY LINE
- (#) INDICATES REFERENCE NUMBER
- ⊙ SET STANDARD STREET MONUMENT, 2 1/2" BRASS DISC STAMPED LS 7176, SET IN CONCRETE IN WELL WITH ROUND FRAME AND COVER
- ⊙ FOUND STANDARD STREET MONUMENT, 2 1/2" BRASS DISC STAMPED LS 6868, SET IN CONCRETE IN WELL WITH ROUND FRAME AND COVER PER (4), OR AS NOTED
- ⊙ SET NAIL, TAGGED LS 7176, EPOXIED IN CONCRETE SIDEWALK OR TOP OF CURB, AT APPROXIMATE CENTERLINE TOP OF CURB, AS REFERENCE MONUMENT.
- SET NAIL TAGGED LS 7176, EPOXIED IN CONCRETE, AT BACK OF WALK ON PROPERTY CORNER, OR AS NOTED
- COE COVENANT OF EASEMENT
- EX EXISTING
- EAE EMERGENCY ACCESS EASEMENT
- IEE INGRESS AND EGRESS EASEMENT
- PSDE PRIVATE STORM DRAIN EASEMENT
- PSDRE PRIVATE SURFACE DRAIN RELEASE EASEMENT
- PSSE PRIVATE SANITARY SEWER EASEMENT
- PSE PUBLIC SERVICE EASEMENT
- SNF SEARCHED FOR, NOT FOUND

**REFERENCES**

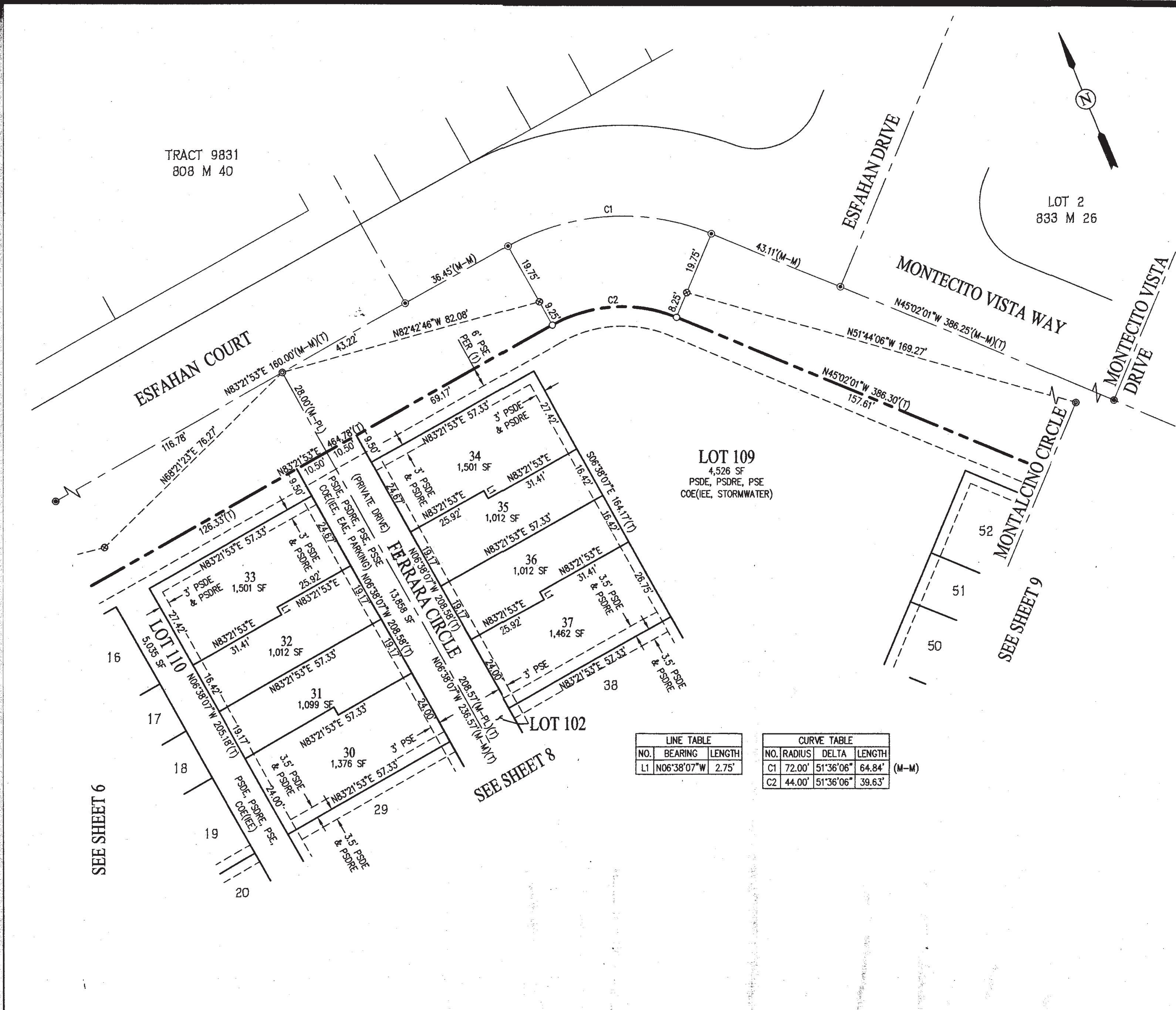
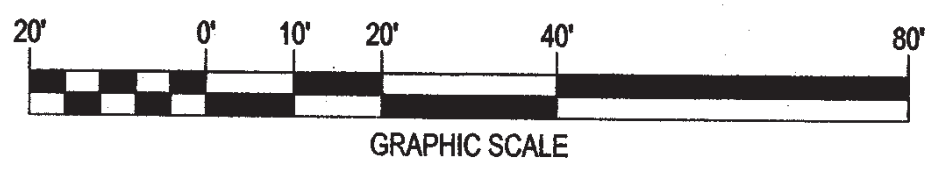
- (#) INDICATES REFERENCE NUMBER.
- (1) TRACT NO. 9831 (808 M 40)
- (2) TRACT NO. 9992 (833 M 26)
- (3) TRACT NO. 10024 (830 M 32)
- (4) CERTIFICATE OF CORRECTION (DOC. NO. 22508682)

**TRACT NO. 10207  
MONTECITO VISTA  
URBAN VILLAGE LOT 4**

CONSISTING OF 10 SHEETS  
BEING A SUBDIVISION OF LOT 4 OF TRACT NO. 9831,  
RECORDED IN BOOK 808 OF MAPS, AT PAGE 40, SANTA CLARA COUNTY  
RECORDS, LYING ENTIRELY WITHIN  
CITY OF SAN JOSE, SANTA CLARA COUNTY, STATE OF CALIFORNIA

**Carlson, Barbee & Gibson, Inc.**  
CIVIL ENGINEERS • SURVEYORS • PLANNERS  
SAN RAMON, CALIFORNIA

SCALE: 1" = 20' MAY 2014



**LINE TABLE**

NO.	BEARING	LENGTH
L1	N06°38'07"W	2.75'

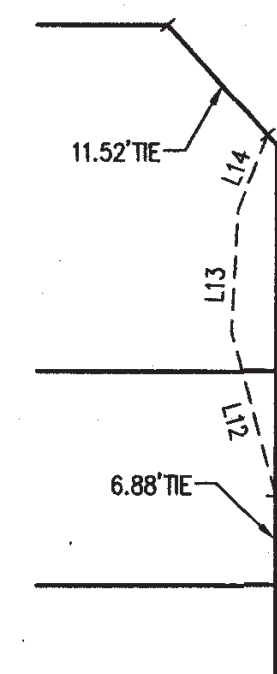
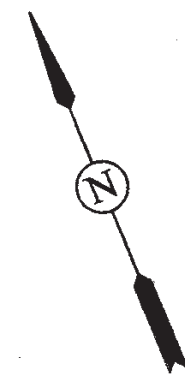
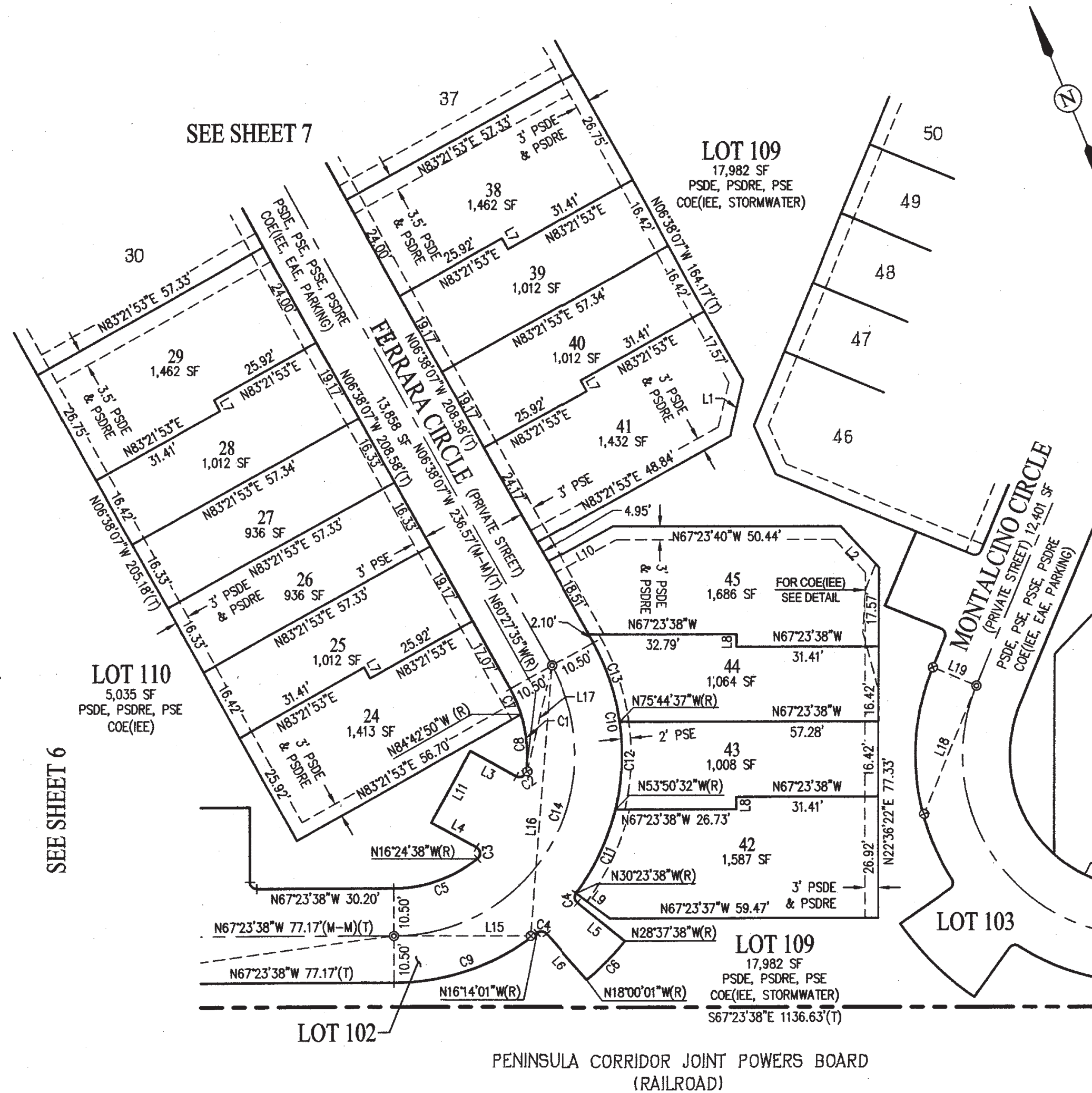
**CURVE TABLE**

NO.	RADIUS	DELTA	LENGTH
C1	72.00'	51°36'06"	64.84'
C2	44.00'	51°36'06"	39.63'

(M-M)

Bk 873  
Pg 23/26

23



COE(IEE) DETAIL  
NTS

LINE TABLE		
NO.	BEARING	LENGTH
L1	N35°36'11"E	12.63'
L2	N19°37'57"W	12.63'
L3	N38°45'03"W	11.51'
L4	N38°45'03"W	11.40'
L5	N28°11'23"W	13.54'
L6	N18°26'16"W	13.54'
L7	N06°38'07"W	2.75'
L8	N22°36'22"E	2.75'
L9	N30°23'38"W	9.32'
L10	N83°21'53"E	16.41'
L11	N51°14'57"E	18.00'
L12	N06°57'24"E	13.15'
L13	N25°36'36"E	9.47'
L14	N44°15'49"E	6.24'
L15	N67°23'38"W	30.25'
L16	N27°04'28"E	59.72'
L17	N35°40'36"E	23.75'
L18	N44°57'59"E	30.41'
L19	N45°02'01"W	10.50'

CURVE TABLE			
NO.	RADIUS	DELTA	LENGTH
C1	29.50'	36°10'32"	18.63'
C2	1.50'	111°42'32"	2.92'
C3	1.50'	112°20'25"	2.94'
C4	1.50'	87°47'45"	2.30'
C5	29.50'	39°01'00"	20.09'
C6	65.50'	10°37'37"	12.15'
C7	29.50'	11°55'17"	6.14'
C8	29.50'	24°15'15"	12.49'
C9	50.50'	38°50'23"	34.23'
C10	50.50'	66°14'29"	58.38'
C11	50.50'	23°26'54"	20.67'
C12	50.50'	21°34'05"	19.30'
C13	50.50'	20°53'30"	18.41'
C14	40.00'	119°14'29"	83.25'

**BASIS OF BEARINGS**

THE BASIS OF BEARINGS FOR THIS SURVEY IS DETERMINED BY FOUND MONUMENTS IN THE CENTERLINE OF MONTECITO VISTA WAY, THE BEARING BEING N45°02'01"W PER TRACT NO. 9831 (808 M 40).

**LEGEND**

- DISTINCTIVE BORDER
- LOT LINE
- - - ADJOINER LOT LINE
- - - EASEMENT LINE
- CENTERLINE
- (T) TOTAL
- (R) RADIAL
- (M-M) MONUMENT TO MONUMENT
- (M-PL) MONUMENT TO PROPERTY LINE
- (#) INDICATES REFERENCE NUMBER
- ⊙ SET STANDARD STREET MONUMENT, 2 1/2" BRASS DISC STAMPED LS 7176, SET IN CONCRETE IN WELL WITH ROUND FRAME AND COVER
- ⊙ FOUND STANDARD STREET MONUMENT, 2 1/2" BRASS DISC STAMPED LS 6868, SET IN CONCRETE IN WELL WITH ROUND FRAME AND COVER PER (4), OR AS NOTED
- ⊙ SET NAIL, TAGGED LS 7176, EPOXIED IN CONCRETE SIDEWALK OR TOP OF CURB, AT APPROXIMATE CENTERLINE TOP OF CURB, AS REFERENCE MONUMENT.
- SET NAIL TAGGED LS 7176, EPOXIED IN CONCRETE, AT BACK OF WALK ON PROPERTY CORNER, OR AS NOTED
- COE COVENANT OF EASEMENT
- EX EXISTING
- EAE EMERGENCY ACCESS EASEMENT
- IEE INGRESS AND EGRESS EASEMENT
- PSDE PRIVATE STORM DRAIN EASEMENT
- PSDRE PRIVATE SURFACE DRAIN RELEASE EASEMENT
- PSSE PRIVATE SANITARY SEWER EASEMENT
- PSE PUBLIC SERVICE EASEMENT
- SNF SEARCHED FOR, NOT FOUND

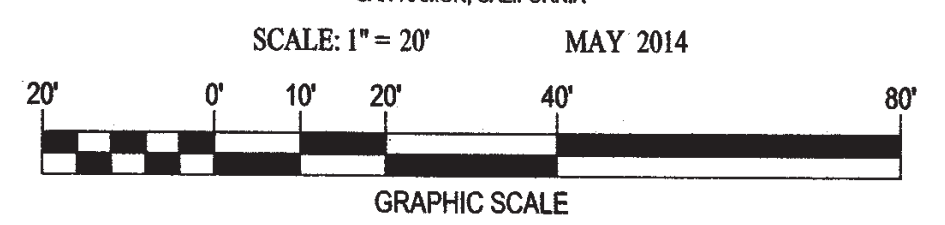
**REFERENCES**

- (#) INDICATES REFERENCE NUMBER.
- (1) TRACT NO. 9831 (808 M 40)
- (2) TRACT NO. 9992 (833 M 26)
- (3) TRACT NO. 10024 (830 M 32)
- (4) CERTIFICATE OF CORRECTION (DOC. NO. 22508682)

**TRACT NO. 10207  
MONTECITO VISTA  
URBAN VILLAGE LOT 4**

CONSISTING OF 10 SHEETS  
BEING A SUBDIVISION OF LOT 4 OF TRACT NO. 9831,  
RECORDED IN BOOK 808 OF MAPS, AT PAGE 40, SANTA CLARA COUNTY  
RECORDS, LYING ENTIRELY WITHIN  
CITY OF SAN JOSE, SANTA CLARA COUNTY, STATE OF CALIFORNIA

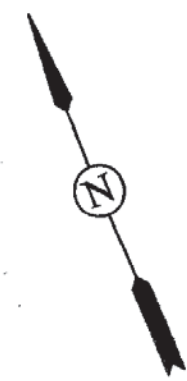
**Carlson, Barbee & Gibson, Inc.**  
CIVIL ENGINEERS • SURVEYORS • PLANNERS  
SAN RAMON, CALIFORNIA



Bk 873  
Pg 24/26

24

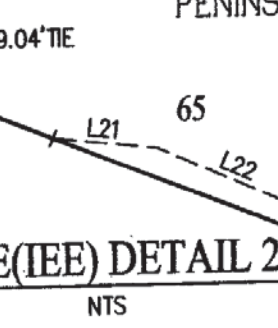




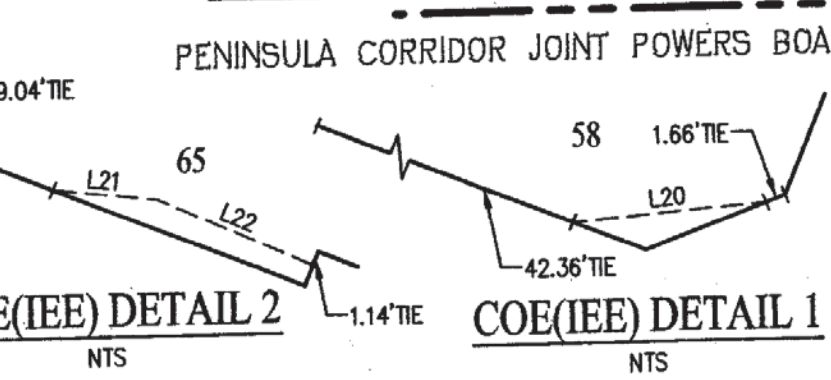
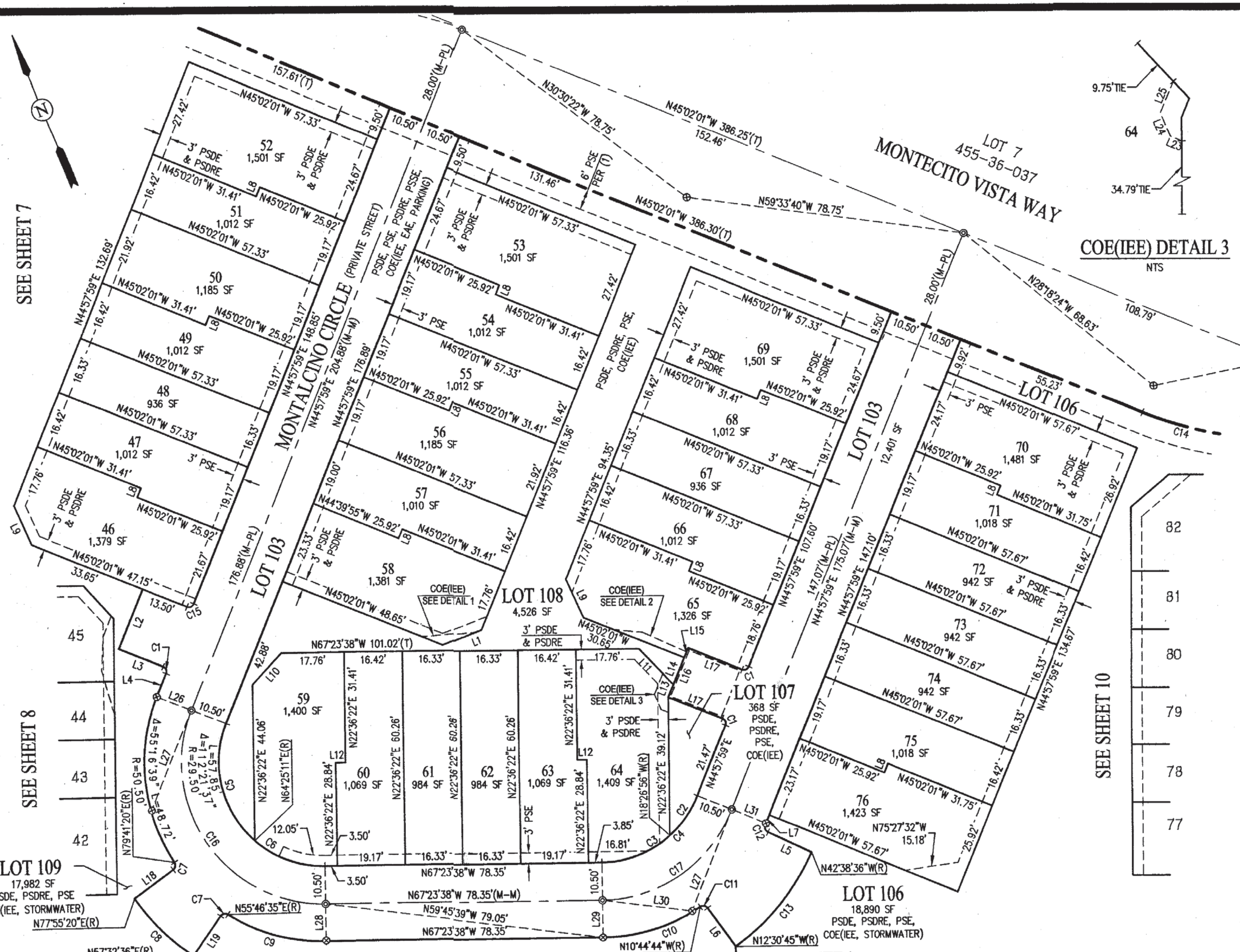
SEE SHEET 7

SEE SHEET 8

LOT 109  
17,982 SF  
PSDE, PSDRE, PSE  
COE(IEE, STORMWATER)



2173-000



LINE TABLE			LINE TABLE			LINE TABLE		
NO.	BEARING	LENGTH	NO.	BEARING	LENGTH	NO.	BEARING	LENGTH
L1	N88°14'24"W	11.91'	L8	N44°57'59"E	2.75'	L15	N44°57'59"E	2.91'
L2	N44°57'59"E	18.00'	L9	N01°49'47"W	11.91'	L16	N44°57'59"E	15.00'
L3	N45°02'01"W	13.50'	L10	N65°48'36"E	11.91'	L17	N45°02'01"W	16.50'
L4	N44°57'59"E	7.04'	L11	N20°35'52"W	14.15'	L18	N77°29'05"E	13.54'
L5	N42°12'35"W	13.54'	L12	N67°23'38"W	2.75'	L19	N57°58'50"E	13.54'
L6	N12°57'00"W	13.54'	L13	N44°57'59"E	3.86'	L20	N72°03'14"W	15.45'
L7	N44°57'59"E	2.51'	L14	N44°57'59"E	8.23'	L21	N60°55'21"W	8.39'
						L22	N42°47'14"W	13.55'
						L23	N45°02'01"W	2.30'
						L24	N00°02'01"W	4.74'
						L25	N44°57'59"E	6.33'
						L26	N45°02'01"W	10.50'
						L27	N44°57'59"E	30.41'
						L28	N22°36'22"E	10.25'
						L29	N22°36'22"E	10.50'
						L30	N59°53'52"W	25.64'
						L31	N45°02'01"W	10.48'

CURVE TABLE			CURVE TABLE			CURVE TABLE					
NO.	RADIUS	DELTA	LENGTH	NO.	RADIUS	DELTA	LENGTH	NO.	RADIUS	DELTA	LENGTH
C1	1.50'	90°00'00"	2.36'	C10	50.50'	33°21'06"	29.40'	C17	40.00'	67°38'23"	47.22'
C2	29.50'	26°35'02"	13.69'	C11	1.50'	87°47'44"	2.30'				
C3	29.50'	41°03'18"	21.14'	C12	1.50'	87°48'01"	2.30'				
C4	29.50'	67°38'23"	34.83'	C13	65.50'	30°07'51"	34.45'				
C5	29.50'	70°32'48"	36.32'	C14	100.00'	22°21'37"	39.03'				
C6	29.50'	41°48'49"	21.53'	C15	1.50'	90°00'00"	2.36'				
C7	1.50'	87°47'45"	2.30'	C16	40.00'	112°21'37"	78.44'				
C8	65.50'	20°22'44"	23.30'								
C9	50.50'	33°10'13"	29.24'								

**BASIS OF BEARINGS**

THE BASIS OF BEARINGS FOR THIS SURVEY IS DETERMINED BY FOUND MONUMENTS IN THE CENTERLINE OF MONTECITO VISTA WAY, THE BEARING BEING N45°02'01"W PER TRACT NO. 9831 (808 M 40).

**LEGEND**

- DISTINCTIVE BORDER
- LOT LINE
- ADJOINER LOT LINE
- EASEMENT LINE
- CENTERLINE
- (T) TOTAL
- (R) RADIAL
- (M-M) MONUMENT TO MONUMENT
- (M-PL) MONUMENT TO PROPERTY LINE
- (#) INDICATES REFERENCE NUMBER
- ⊙ SET STANDARD STREET MONUMENT, 2 1/2" BRASS DISC STAMPED LS 7176, SET IN CONCRETE IN WELL WITH ROUND FRAME AND COVER
- ⊙ FOUND STANDARD STREET MONUMENT, 2 1/2" BRASS DISC STAMPED LS 6868, SET IN CONCRETE IN WELL WITH ROUND FRAME AND COVER PER (4), OR AS NOTED
- ⊙ SET NAIL, TAGGED LS 7176, EPOXIED IN CONCRETE SIDEWALK OR TOP OF CURB, AT APPROXIMATE CENTERLINE TOP OF CURB, AS REFERENCE MONUMENT.
- SET NAIL TAGGED LS 7176, EPOXIED IN CONCRETE, AT BACK OF WALK ON PROPERTY CORNER, OR AS NOTED
- COE COVENANT OF EASEMENT
- EX EXISTING
- EAE EMERGENCY ACCESS EASEMENT
- IEE INGRESS AND EGRESS EASEMENT
- PSDE PRIVATE STORM DRAIN EASEMENT
- PSDRE PRIVATE SURFACE DRAIN RELEASE EASEMENT
- PSSE PRIVATE SANITARY SEWER EASEMENT
- PSE PUBLIC SERVICE EASEMENT
- SNF SEARCHED FOR, NOT FOUND

**REFERENCES**

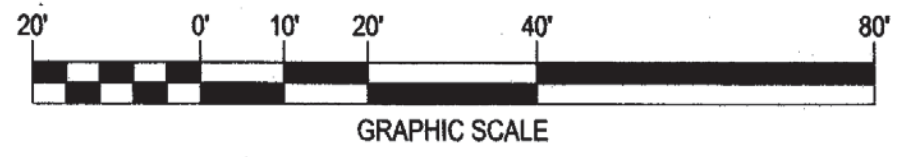
- (#) INDICATES REFERENCE NUMBER.
- (1) TRACT NO. 9831 (808 M 40)
- (2) TRACT NO. 9992 (833 M 26)
- (3) TRACT NO. 10024 (830 M 32)
- (4) CERTIFICATE OF CORRECTION (DOC. NO. 22508682)

**TRACT NO. 10207  
MONTECITO VISTA  
URBAN VILLAGE LOT 4**

CONSISTING OF 10 SHEETS  
BEING A SUBDIVISION OF LOT 4 OF TRACT NO. 9831,  
RECORDED IN BOOK 808 OF MAPS, AT PAGE 40, SANTA CLARA COUNTY  
RECORDS, LYING ENTIRELY WITHIN  
CITY OF SAN JOSE, SANTA CLARA COUNTY, STATE OF CALIFORNIA

**Carlson, Barbee & Gibson, Inc.**  
CIVIL ENGINEERS • SURVEYORS • PLANNERS  
SAN RAMON, CALIFORNIA

SCALE: 1" = 20' MAY 2014



BK 83  
06.25/16

25

LINE TABLE		
NO.	BEARING	LENGTH
L1	N72°16'34"E	13.95'
L2	N22°36'22"E	14.00'
L3	N67°23'38"W	15.50'
L4	N22°36'22"E	11.00'
L5	N22°36'22"E	2.75'
L6	N44°57'59"E	11.86'
L7	N58°43'14"E	21.09'
L8	N31°11'00"W	28.84'
L9	N22°36'22"E	1.50'
L10	N67°23'38"W	27.25'

CURVE TABLE			
NO.	RADIUS	DELTA	LENGTH
C1	1.50'	90°00'00"	2.36'

**BASIS OF BEARINGS**

THE BASIS OF BEARINGS FOR THIS SURVEY IS DETERMINED BY FOUND MONUMENTS IN THE CENTERLINE OF MONTECITO VISTA WAY, THE BEARING BEING N45°02'01"W PER TRACT NO. 9831 (808 M 40).

**LEGEND**

- DISTINCTIVE BORDER
- LOT LINE
- ADJOINER LOT LINE
- - - EASEMENT LINE
- - - CENTERLINE
- (T) TOTAL
- (R) RADIAL
- (M-M) MONUMENT TO MONUMENT
- (M-PL) MONUMENT TO PROPERTY LINE
- (#) INDICATES REFERENCE NUMBER
- ⊙ SET STANDARD STREET MONUMENT, 2 1/2" BRASS DISC STAMPED LS 7176, SET IN CONCRETE IN WELL WITH ROUND FRAME AND COVER
- ⊙ FOUND STANDARD STREET MONUMENT, 2 1/2" BRASS DISC STAMPED LS 6868, SET IN CONCRETE IN WELL WITH ROUND FRAME AND COVER PER (4), OR AS NOTED
- ⊙ SET NAIL, TAGGED LS 7176, EPOXIED IN CONCRETE SIDEWALK OR TOP OF CURB, AT APPROXIMATE CENTERLINE TOP OF CURB, AS REFERENCE MONUMENT.
- SET NAIL TAGGED LS 7176, EPOXIED IN CONCRETE, AT BACK OF WALK ON PROPERTY CORNER, OR AS NOTED
- COE COVENANT OF EASEMENT
- EX EXISTING
- EAE EMERGENCY ACCESS EASEMENT
- IEE INGRESS AND EGRESS EASEMENT
- PSDE PRIVATE STORM DRAIN EASEMENT
- PSDRE PRIVATE SURFACE DRAIN RELEASE EASEMENT
- PSSE PRIVATE SANITARY SEWER EASEMENT
- PSE PUBLIC SERVICE EASEMENT
- SNF SEARCHED FOR, NOT FOUND

**REFERENCES**

- (#) INDICATES REFERENCE NUMBER.
- (1) TRACT NO. 9831 (808 M 40)
- (2) TRACT NO. 9992 (833 M 26)
- (3) TRACT NO. 10024 (830 M 32)
- (4) CERTIFICATE OF CORRECTION (DOC. NO. 22508682)

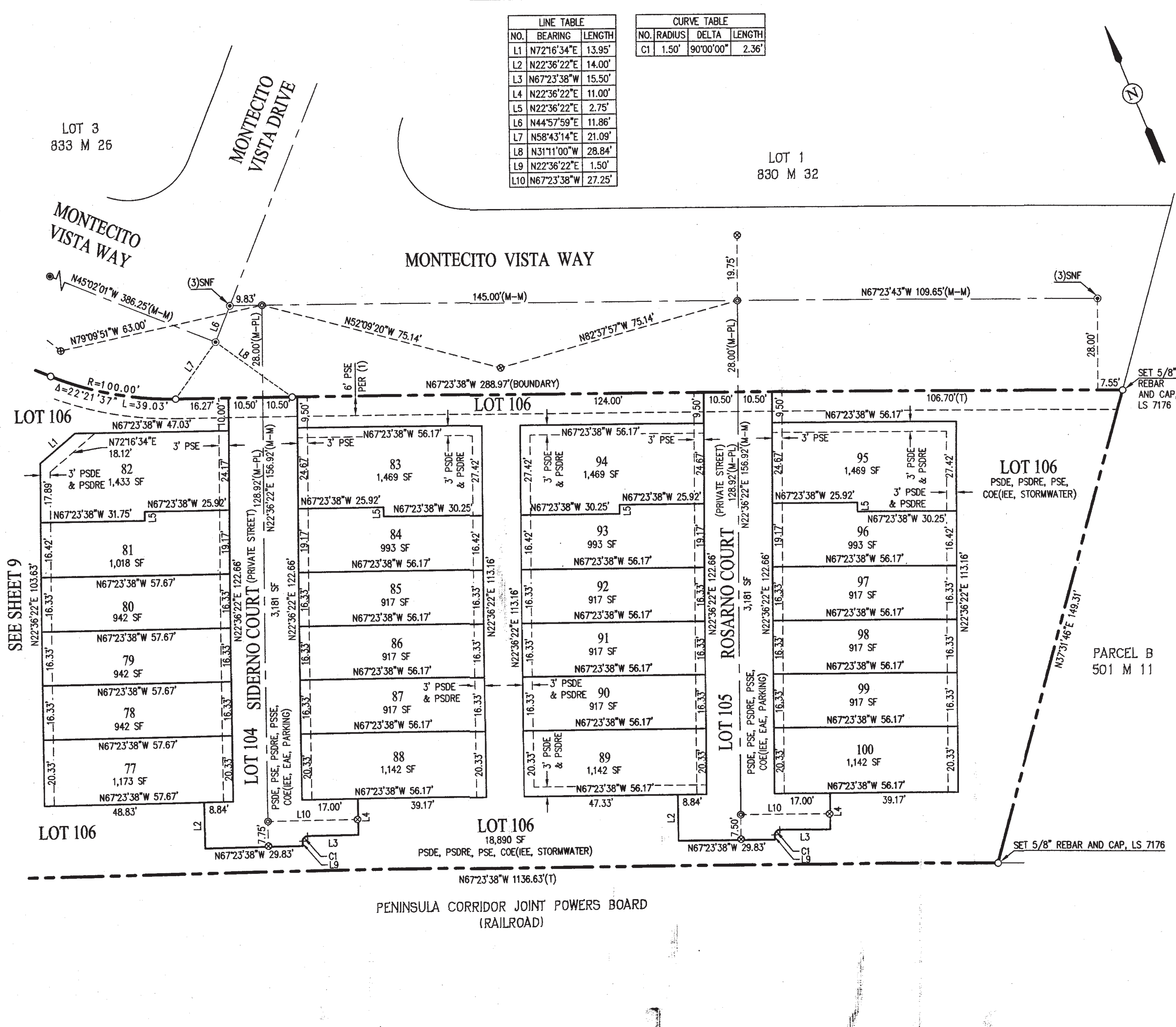
**TRACT NO. 10207  
MONTECITO VISTA  
URBAN VILLAGE LOT 4**

CONSISTING OF 10 SHEETS  
BEING A SUBDIVISION OF LOT 4 OF TRACT NO. 9831,  
RECORDED IN BOOK 808 OF MAPS, AT PAGE 40, SANTA CLARA COUNTY  
RECORDS, LYING ENTIRELY WITHIN  
CITY OF SAN JOSE, SANTA CLARA COUNTY, STATE OF CALIFORNIA

**Carlson, Barbee & Gibson, Inc.**

CIVIL ENGINEERS • SURVEYORS • PLANNERS  
SAN RAMON, CALIFORNIA

SCALE: 1" = 20' MAY 2014



pk 8/3  
pg 26/26

26