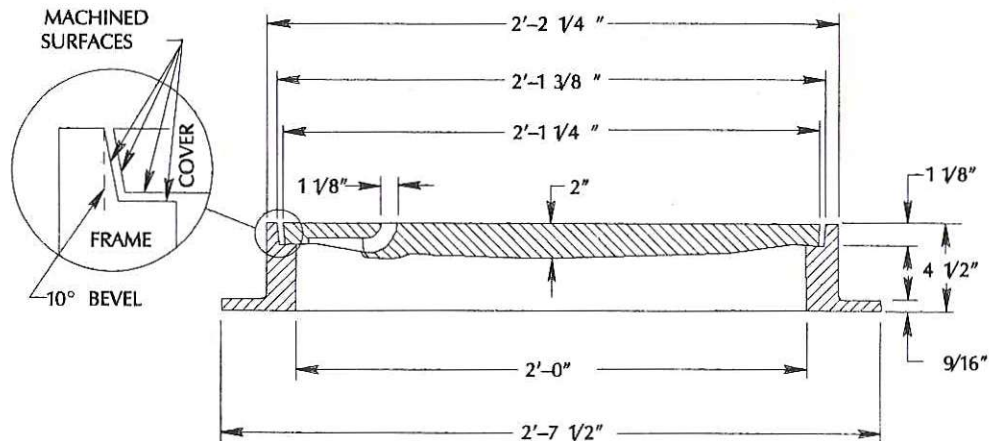
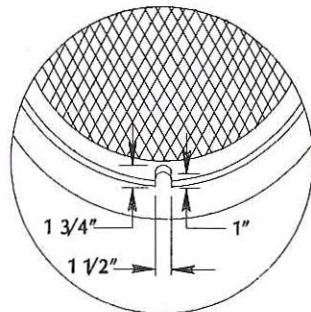


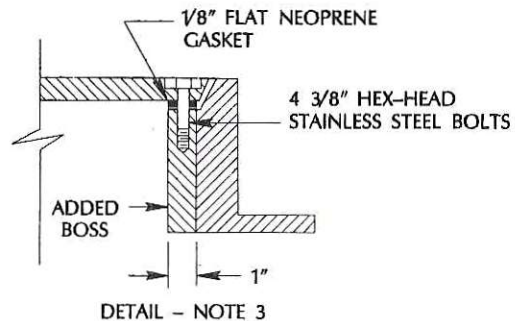
SET WEIGHT	
FRAME	125 LBS
COVER	165 LBS
TOTAL	290 LBS



- NOTES:**
1. MINIMUM WEIGHT OF SET 290 LBS.
 2. CAST IRON SHALL BE ASTM A-48 CLASS 35B.
 3. WHERE BOLT DOWN COVERS ARE CALLED FOR ON THE PLANS, ADD BOSSES TO FRAME (4 EA. @ 90°), SEE DETAIL.
 4. MANUFACTURER SHALL CERTIFY MATERIAL, WEIGHT AND DIMENSIONS.
 5. MANUFACTURER TO CERTIFY THAT FRAME AND COVER MEET ALL LOAD REQUIREMENTS FOR H-20 HIGHWAY LOADING.



DETAIL - SIDE PRY HOLE



DETAIL - NOTE 3

APPROVED BY

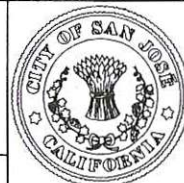
MKD

DATE

4/3/92

STANDARD MANHOLE FRAME & COVER

DEPARTMENT OF PUBLIC WORKS



DRAWING
NO.

D-10