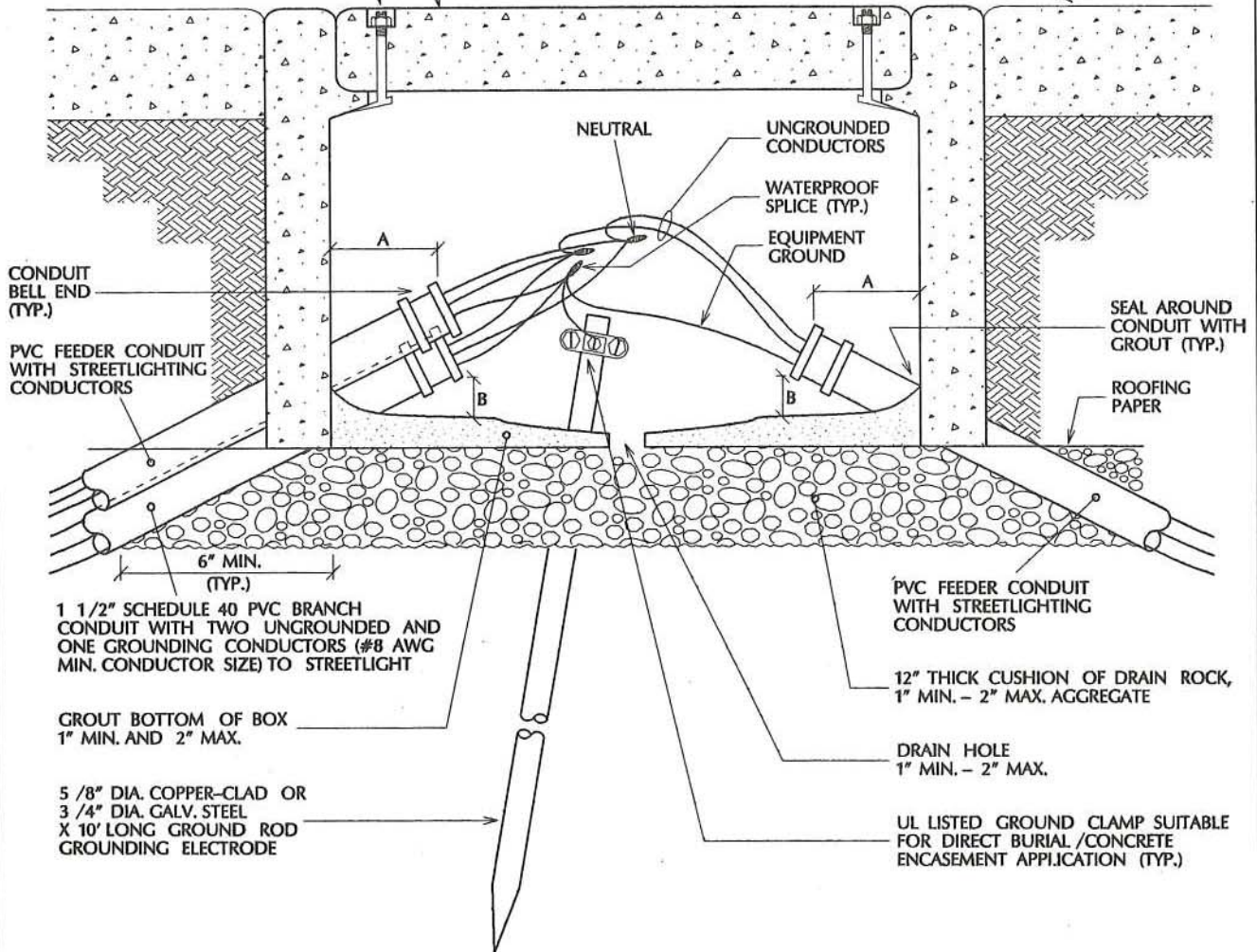


CITY OF SAN JOSE #3 1/2
 PRECAST CONCRETE BOX WITH
 LID MARKED "CSJ STREETLIGHTING"

3/8" BRASS HOLD DOWN BOLT
 NUT AND WASHER RECESSED
 IN COVER (2 PER BOX)

SIDEWALK OR TOP
 OF CURB GRADE



1 1/2" SCHEDULE 40 PVC BRANCH
 CONDUIT WITH TWO UNGROUNDED AND
 ONE GROUNDING CONDUCTORS (#8 AWG
 MIN. CONDUCTOR SIZE) TO STREETLIGHT

GROUT BOTTOM OF BOX
 1" MIN. AND 2" MAX.

5/8" DIA. COPPER-CLAD OR
 3/4" DIA. GALV. STEEL
 X 10' LONG GROUND ROD
 GROUNDING ELECTRODE

PVC FEEDER CONDUIT
 WITH STREETLIGHTING
 CONDUCTORS

12" THICK CUSHION OF DRAIN ROCK,
 1" MIN. - 2" MAX. AGGREGATE

DRAIN HOLE
 1" MIN. - 2" MAX.

UL LISTED GROUND CLAMP SUITABLE
 FOR DIRECT BURIAL / CONCRETE
 ENCASEMENT APPLICATION (TYP.)

DIMENSION A: 1" MIN., 2" MAX. (TYP. - ALL CONDUITS)
 " B: 1" MIN., 2" MAX. ABOVE GROUT (TYP. - ALL CONDUITS)

NOTES:

1. SEE NOTES DRAWINGS E-04, E-05, AND E-06.
2. PVC CONDUIT SHOWN; IF RIGID STEEL CONDUIT IS USED, BONDING SHALL BE AS PER CITY OF SAN JOSE STANDARD SPECIFICATIONS FOR PUBLIC WORKS CONSTRUCTION.
3. SEE DRAWINGS E-46 AND E-47 FOR BONDING REQUIREMENTS.
4. PROVIDE 3' OF SLACK IN ALL CONDUCTORS IN ACCORDANCE WITH SPECIFICATIONS (SLACK NOT SHOWN).
5. 240V STREETLIGHTING CIRCUIT SHOWN. 120V STREETLIGHTING SIMILAR EXCEPT NEUTRAL CONDUCTOR IS PRESENT.

APPROVED BY

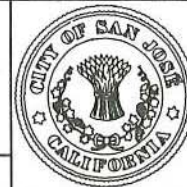
[Signature]

DATE

3/3/92

**STREETLIGHT - BRANCH CIRCUIT
 PULLBOX**

DEPARTMENT OF PUBLIC WORKS



DRAWING
 NO.

E-07