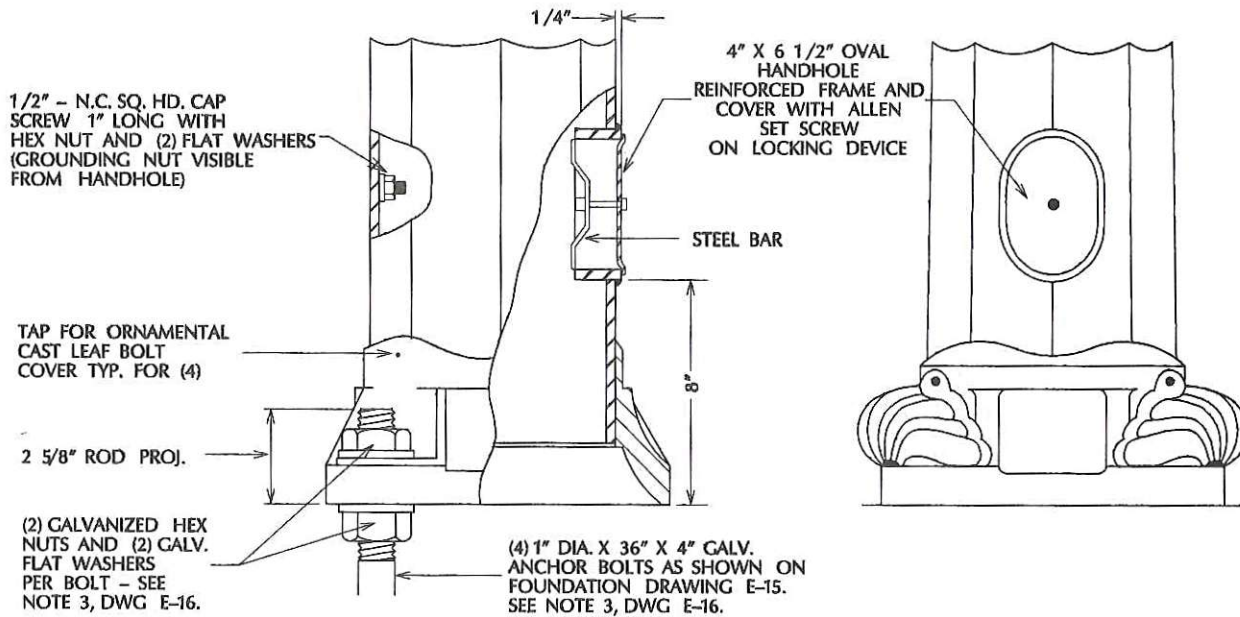


PLAN VIEW



SIDE VIEW

HAND HOLE VIEW

NOTES:

1. HAND HOLE SHALL BE LOCATED ON LEFT SIDE OF POLE WHEN FACING POLE FROM STREET AND MAST ARM AT RIGHT ANGLE TO STREET.
2. SEE DRAWING E-15 FOR POLE DETAILS.
3. SEE DRAWING E-17 FOR POLE TYPE 10A TRANSFORMER BASE CONNECTING BOLT AND ANCHOR BOLT REQUIREMENTS.

APPROVED BY

AWB
DATE

3/3/92

**LIGHTING STANDARDS TYPE 10A, 10B,
AND 11A BASE DETAILS**

DEPARTMENT OF PUBLIC WORKS



DRAWING NO.

E-16