

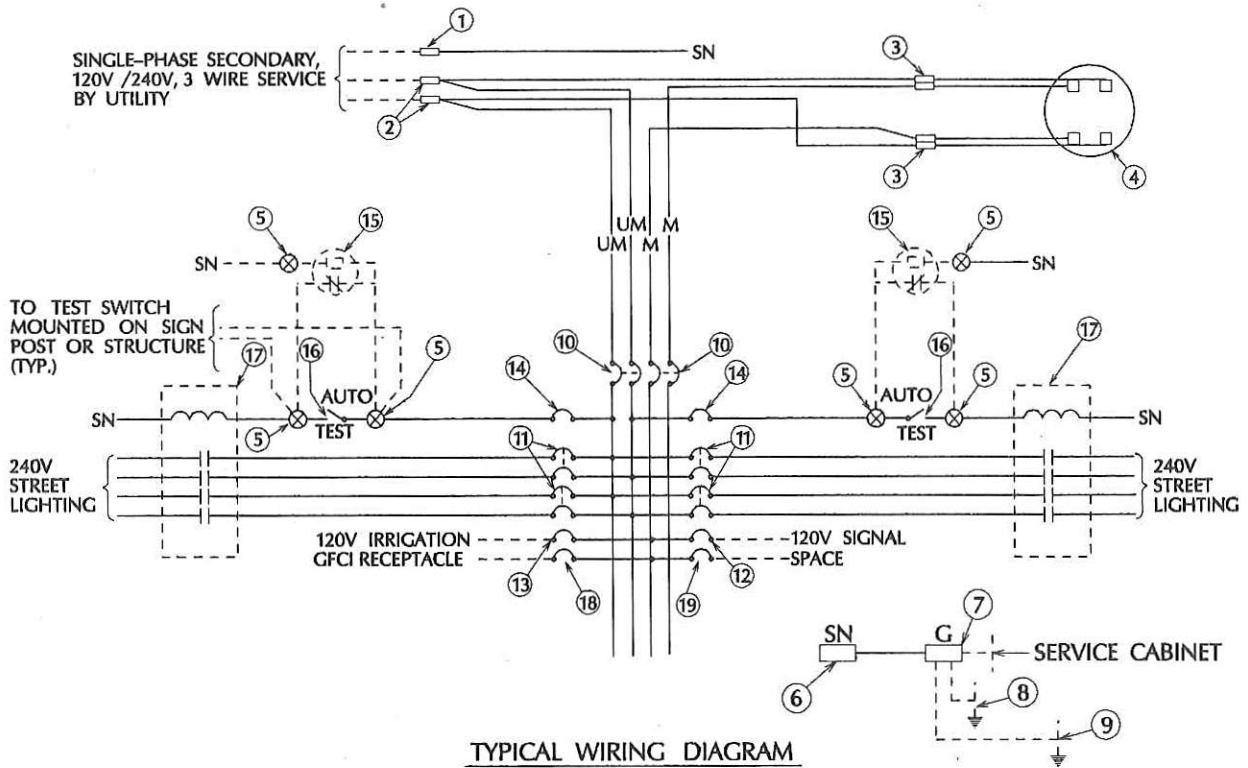
TYPE III (III M) SERVICE (120 /240V) EQUIPMENT SCHEDULE		
ITEM NO.	COMPONENT	NAME PLATE DESCRIPTION
①	NEUTRAL LUG, 200A	
②	LANDING LUG, 200A	
③	TEST BYPASS FACILITIES	
④	METER SOCKET AND SUPPORT	
⑤	TERMINAL BLOCKS	
⑥	SOLID NEUTRAL LUG	
⑦	GROUND LUG	
⑧	GROUND ROD	
⑨	ANCHOR BOLT BONDING ALL 4 ANCHOR BOLTS (TYP.)	
⑩	100A, 240V, 2P, CKT BKRS	MAIN BREAKERS (UNMETERED, METERED)
⑪	30A, 240V, 2P, CKT BKR	STREETLIGHTING
⑫	60A, 120V, 1P, CKT BKR	SIGNALS
⑬	15A, 120V, 1P, CKT BKR	IRRIGATION
⑭	15A, 120V, 1P, CKT BKR	STREETLIGHTING CONTROL
⑮	PHOTO ELECTRIC UNIT	
⑯	15A, 1P, TEST SWITCH	STREETLIGHTING TEST SWITCH
⑰	30A, 4P CONTACTOR	
⑱	15A, 120V, 1P GFCI BKR	GFCI RECEPTACLE
⑲	20A, 120V, 1P, BKR	SPACE

ABBREVIATION /SYMBOL LEGEND

- P POLE
  - CKT BKR CIRCUIT BREAKER
  - A AMPERE
  - V VOLTS
  - UM UNMETERED
  - M METERED
  - SN SOLID NEUTRAL
  - PNO POLE NORMALLY OPEN
  - PNC POLE NORMALLY CLOSED
  - UG UNDERGROUND
- 
- EXTERNAL CONDUCTORS
  - TIE POINT
  - CONDUCTOR OR BUS
  - CONDUCTOR COIL
  - CONTACTOR, CONTACTS PNO
  - CONTACTOR, CONTACTS PNC
  - ⊗ TERMINAL BLOCKS

NOTES (FOR SERVICE EQUIPMENT):

- VOLTAGE RATINGS OF SERVICE EQUIPMENT SHALL CONFORM TO THE SERVICE VOLTAGES INDICATED ON THE PLANS.
- UNLESS OTHERWISE INDICATED ON THE PLANS, ALL SERVICE EQUIPMENT ITEMS SHALL BE PROVIDED FOR EACH SERVICE EQUIPMENT ENCLOSURE AS SHOWN ON DRAWING E-28.
- DIMENSIONS OF SERVICE EQUIPMENT ENCLOSURES MEET THE REQUIREMENTS OF THE SERVING UTILITY.
- MOUNT PHOTOELECTRIC UNIT ON NEAREST ELECTROLIER WITH A POST-TOP ADAPTOR.
- PROVIDE ONE TEST SWITCH WITH SEPARATE CIRCUIT BREAKER FOR EACH LIGHTING CONTACTOR AND CORRESPONDING CONTROL CIRCUIT.



TYPICAL WIRING DIAGRAM

APPROVED BY

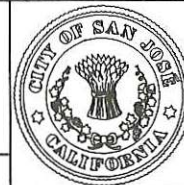
*[Signature]*

DATE

3/2/92

SERVICE EQUIPMENT - TYPE III (III M)  
TYPICAL WIRING DIAGRAM /SCHEDULE

DEPARTMENT OF PUBLIC WORKS



DRAWING NO.

E-31