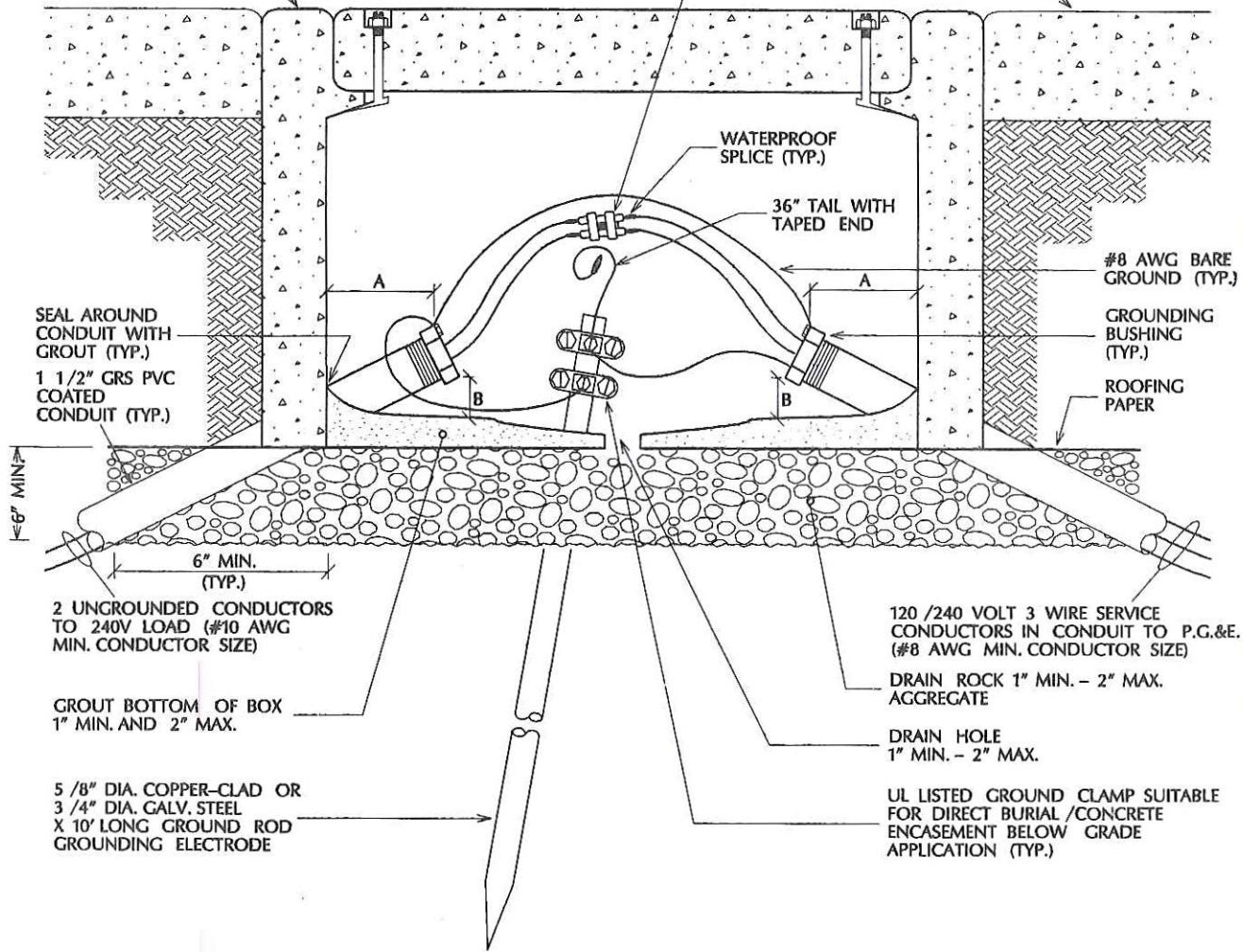


#3 1/2 PRECAST CONCRETE BOX MIN., WITH LID MARKED "CSJ SERVICE", OR SIZED AS SPECIFIED ON DRAWINGS

WATERPROOF 2 POLE FUSED SPLICE CONNECTOR RATED 30A, 600V WITH TWO 30A FUSES

SIDEWALK OR TOP OF CURB GRADE



SEAL AROUND CONDUIT WITH GROUT (TYP.)  
1 1/2" GRS PVC COATED CONDUIT (TYP.)

WATERPROOF SPLICE (TYP.)

36" TAIL WITH TAPED END

#8 AWG BARE GROUND (TYP.)

GROUNDING BUSHING (TYP.)

ROOFING PAPER

6" MIN.

6" MIN. (TYP.)

2 UNGROUNDED CONDUCTORS TO 240V LOAD (#10 AWG MIN. CONDUCTOR SIZE)

120 /240 VOLT 3 WIRE SERVICE CONDUCTORS IN CONDUIT TO P.G.&E. (#8 AWG MIN. CONDUCTOR SIZE)

GROUT BOTTOM OF BOX 1" MIN. AND 2" MAX.

DRAIN ROCK 1" MIN. - 2" MAX. AGGREGATE

DRAIN HOLE 1" MIN. - 2" MAX.

5 /8" DIA. COPPER-CLAD OR 3 /4" DIA. GALV. STEEL X 10' LONG GROUND ROD GROUNDING ELECTRODE

UL LISTED GROUND CLAMP SUITABLE FOR DIRECT BURIAL /CONCRETE ENCASEMENT BELOW GRADE APPLICATION (TYP.)

DIMENSION A: 1" MIN., 2" MAX. (TYP. - ALL CONDUITS)  
" B: 1" MIN., 2" MAX. ABOVE GROUT (TYP. - ALL CONDUITS)

NOTES:  
1. SEE NOTES DRAWINGS E-04, E-05, E-06, AND E-37.  
2. PROVIDE 3' OF SLACK IN ALL CONDUCTORS IN ACCORDANCE WITH SPECIFICATIONS. (SLACK NOT SHOWN).

APPROVED BY  
*AWB*  
DATE  
3/3/92

**UNDERGROUND STREETLIGHT SERVICE  
TYPE ID - 240V**

DEPARTMENT OF PUBLIC WORKS



DRAWING NO.  
**E-36**