

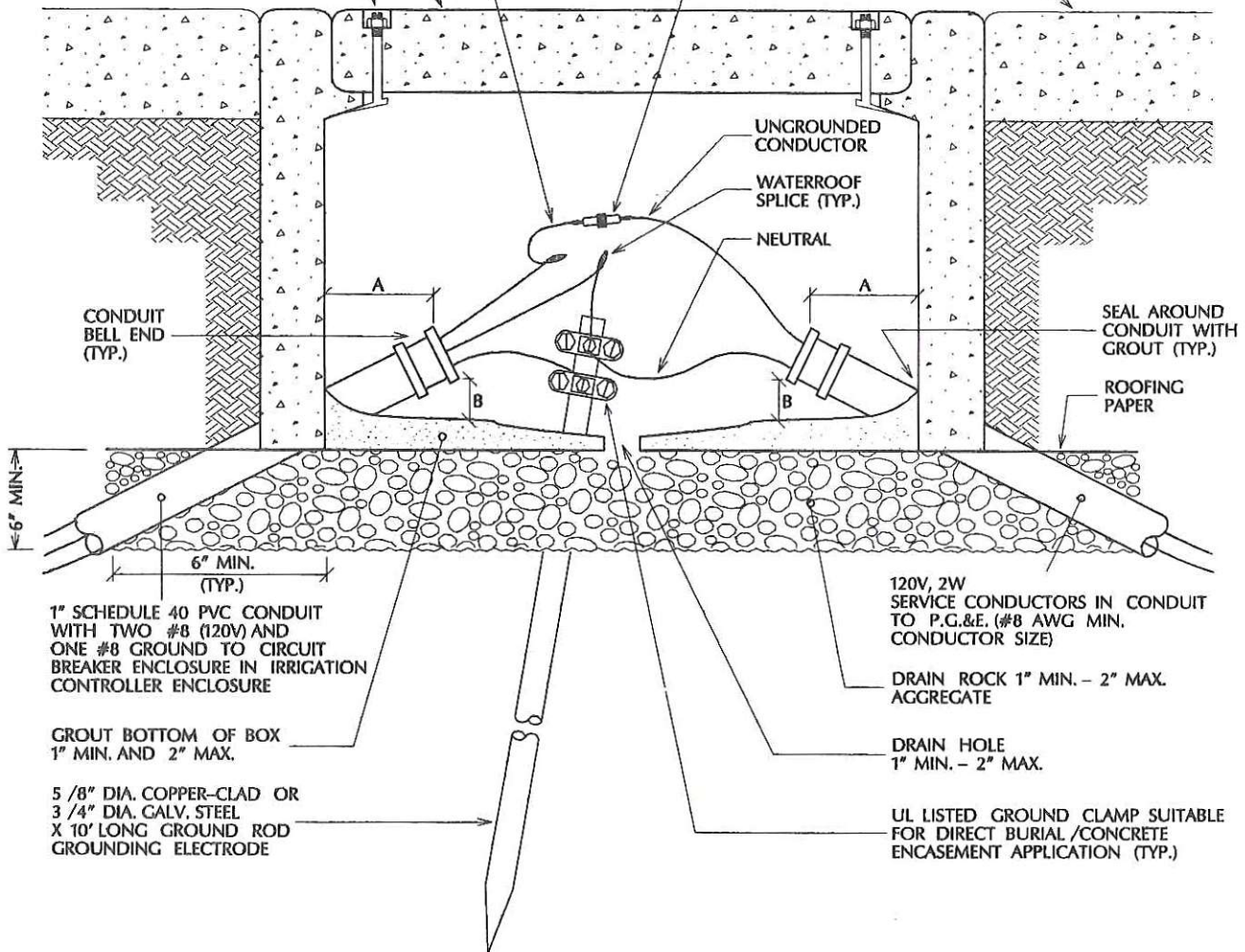
IDENTIFY CONDUCTORS AS
"IRRIGATION" CIRCUIT

CITY OF SAN JOSE #3 1/2
PRECAST CONCRETE BOX WITH
LID MARKED "CSJ SERVICE"

3/8" BRASS HOLD DOWN BOLT,
NUT AND WASHER RECESSED
IN COVER (2 PER BOX)

WATERPROOF 1 POLE FUSED
SPLICE CONNECTOR RATED 30A,
600V WITH 15A FUSE

SIDEWALK OR TOP
OF CURB GRADE



1" SCHEDULE 40 PVC CONDUIT
WITH TWO #8 (120V) AND
ONE #8 GROUND TO CIRCUIT
BREAKER ENCLOSURE IN IRRIGATION
CONTROLLER ENCLOSURE

GROUT BOTTOM OF BOX
1" MIN. AND 2" MAX.

5/8" DIA. COPPER-CLAD OR
3/4" DIA. CALV. STEEL
X 10' LONG GROUND ROD
GROUNDING ELECTRODE

120V, 2W
SERVICE CONDUCTORS IN CONDUIT
TO P.G.&E. (#8 AWG MIN.
CONDUCTOR SIZE)

DRAIN ROCK 1" MIN. - 2" MAX.
AGGREGATE

DRAIN HOLE
1" MIN. - 2" MAX.

UL LISTED GROUND CLAMP SUITABLE
FOR DIRECT BURIAL/CONCRETE
ENCASEMENT APPLICATION (TYP.)

DIMENSION A: 1" MIN., 2" MAX. (TYP. - ALL CONDUITS)
B: 1" MIN., 2" MAX. ABOVE GROUT (TYP. - ALL CONDUITS)

NOTES:

1. ALL WORK SHALL COMPLY WITH CITY OF SAN JOSE STANDARD SPECIFICATIONS FOR PUBLIC WORKS CONSTRUCTION.
2. IF RIGID STEEL CONDUIT IS PRESENT, BONDING SHALL BE AS PER CITY OF SAN JOSE STANDARD SPECIFICATIONS FOR PUBLIC WORKS CONSTRUCTION.
3. PROVIDE 3' OF SLACK IN ALL CONDUCTORS IN ACCORDANCE WITH SPECIFICATIONS. (SLACK NOT SHOWN).
4. SEE NOTES DRAWINGS E-04, E-05, E-06, AND E-37.

APPROVED BY

Ans

DATE

3/3/92

UNDERGROUND
IRRIGATION CONTROLLER SERVICE

DEPARTMENT OF PUBLIC WORKS



DRAWING
NO.

E-38