

LOCATION MAP
NO SCALE

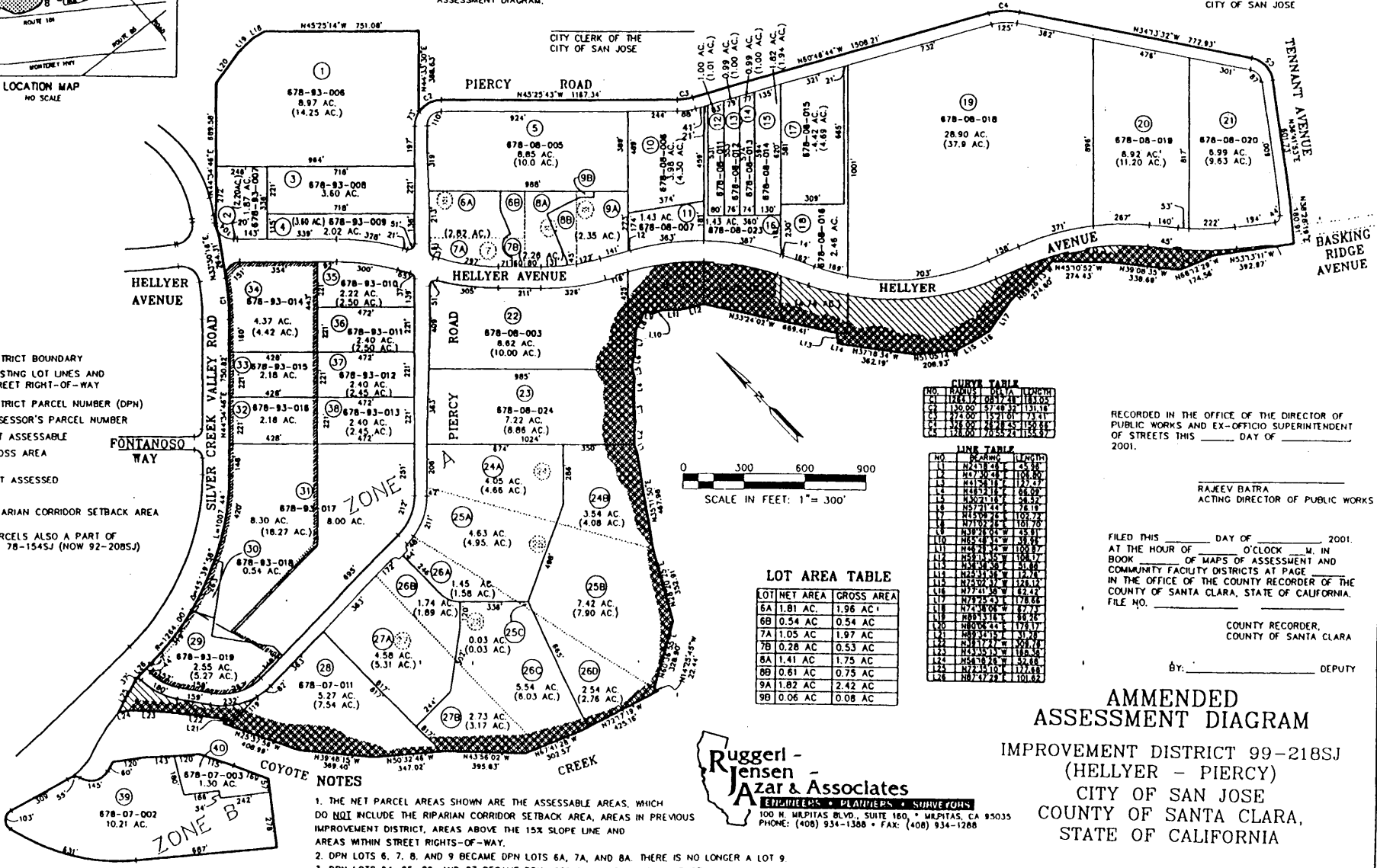
AN ASSESSMENT WAS LEVIED BY THE CITY COUNCIL OF THE CITY OF SAN JOSE ON THE LOTS, PIECES AND PARCELS OF LAND SHOWN ON THIS ASSESSMENT DIAGRAM, SAID ASSESSMENT WAS LEVIED ON THE _____ DAY OF _____ 2001. SAID ASSESSMENT DIAGRAM AND THE ASSESSMENT ROLL WERE RECORDED IN THE OFFICE OF THE SUPERINTENDENT OF STREETS OF SAID CITY ON THE _____ DAY OF _____ 2001. REFERENCE IS MADE TO THE ASSESSMENT ROLLS RECORDED IN THE OFFICE OF THE SUPERINTENDENT OF STREETS FOR THE EXACT AMOUNT OF THIS ASSESSMENT LEVIED AGAINST EACH PARCEL OF LAND SHOWN ON THIS ASSESSMENT DIAGRAM.

FILED IN THE OFFICE OF THE CITY CLERK OF THE CITY OF SAN JOSE, COUNTY OF SANTA CLARA, STATE OF CALIFORNIA, THIS _____ DAY OF _____ 2001.

CITY CLERK OF THE CITY OF SAN JOSE

LEGEND

- DISTRICT BOUNDARY
- EXISTING LOT LINES AND STREET RIGHT-OF-WAY
- ③ DISTRICT PARCEL NUMBER (DPN)
- 648-14-002 ASSESSOR'S PARCEL NUMBER
- 3.65 AC. NET ASSESSABLE GROSS AREA (8.0 AC.)
- NOT ASSESSED
- RIPARIAN CORRIDOR SETBACK AREA
- PARCELS ALSO A PART OF I.D. 78-154SJ (NOW 92-2085J)



CITY CLERK OF THE CITY OF SAN JOSE

CURVE TABLE

NO.	BEARING	LENGTH	CHORD	ARC
1	N74°17'00"W	113.00	113.00	113.00
2	S74°17'00"W	113.00	113.00	113.00
3	N74°17'00"W	113.00	113.00	113.00
4	S74°17'00"W	113.00	113.00	113.00
5	N74°17'00"W	113.00	113.00	113.00
6	S74°17'00"W	113.00	113.00	113.00
7	N74°17'00"W	113.00	113.00	113.00
8	S74°17'00"W	113.00	113.00	113.00
9	N74°17'00"W	113.00	113.00	113.00
10	S74°17'00"W	113.00	113.00	113.00

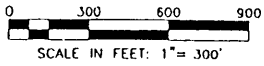
RECORDED IN THE OFFICE OF THE DIRECTOR OF PUBLIC WORKS AND EX-OFFICIO SUPERINTENDENT OF STREETS THIS _____ DAY OF _____ 2001.

RAJEEV BATRA
ACTING DIRECTOR OF PUBLIC WORKS

FILED THIS _____ DAY OF _____ 2001. AT THE HOUR OF _____ O'CLOCK _____ M. IN BOOK _____ OF MAPS OF ASSESSMENT AND COMMUNITY FACILITY DISTRICTS AT PAGE _____ IN THE OFFICE OF THE COUNTY RECORDER OF THE COUNTY OF SANTA CLARA, STATE OF CALIFORNIA. FILE NO. _____

COUNTY RECORDER, COUNTY OF SANTA CLARA

By: _____ DEPUTY



LOT AREA TABLE

LOT	NET AREA	GROSS AREA
6A	1.81 AC.	1.98 AC'
6B	0.54 AC.	0.54 AC'
7A	1.05 AC.	1.97 AC'
7B	0.28 AC.	0.53 AC'
8A	1.41 AC.	1.75 AC'
8B	0.61 AC.	0.75 AC'
9A	1.82 AC.	2.42 AC'
9B	0.06 AC.	0.08 AC'

LINE TABLE

NO.	BEARING	LENGTH
1	N74°17'00"W	113.00
2	S74°17'00"W	113.00
3	N74°17'00"W	113.00
4	S74°17'00"W	113.00
5	N74°17'00"W	113.00
6	S74°17'00"W	113.00
7	N74°17'00"W	113.00
8	S74°17'00"W	113.00
9	N74°17'00"W	113.00
10	S74°17'00"W	113.00
11	N74°17'00"W	113.00
12	S74°17'00"W	113.00
13	N74°17'00"W	113.00
14	S74°17'00"W	113.00
15	N74°17'00"W	113.00
16	S74°17'00"W	113.00
17	N74°17'00"W	113.00
18	S74°17'00"W	113.00
19	N74°17'00"W	113.00
20	S74°17'00"W	113.00
21	N74°17'00"W	113.00
22	S74°17'00"W	113.00
23	N74°17'00"W	113.00
24	S74°17'00"W	113.00
25	N74°17'00"W	113.00
26	S74°17'00"W	113.00
27	N74°17'00"W	113.00
28	S74°17'00"W	113.00
29	N74°17'00"W	113.00
30	S74°17'00"W	113.00
31	N74°17'00"W	113.00
32	S74°17'00"W	113.00
33	N74°17'00"W	113.00
34	S74°17'00"W	113.00
35	N74°17'00"W	113.00
36	S74°17'00"W	113.00
37	N74°17'00"W	113.00
38	S74°17'00"W	113.00
39	N74°17'00"W	113.00

- NOTES**
1. THE NET PARCEL AREAS SHOWN ARE THE ASSESSABLE AREAS, WHICH DO NOT INCLUDE THE RIPARIAN CORRIDOR SETBACK AREA, AREAS IN PREVIOUS IMPROVEMENT DISTRICT, AREAS ABOVE THE 15% SLOPE LINE AND AREAS WITHIN STREET RIGHTS-OF-WAY.
 2. DPN LOTS 6, 7, 8, AND 9 BECAME DPN LOTS 6A, 7A, AND 8A. THERE IS NO LONGER A LOT 9.
 3. DPN LOTS 24, 25, 26, AND 27 BECAME DPN LOTS 24A, 25A, 26A, AND 27A.

Ruggerl - Jensen - Jazsar & Associates
ENGINEERS • PLANNERS • SURVEYORS
100 N. HILPITAS BLVD., SUITE 180, • HILPITAS, CA 95035
PHONE: (408) 934-1388 • FAX: (408) 934-1268

AMMENDED ASSESSMENT DIAGRAM
IMPROVEMENT DISTRICT 99-218SJ
(HELLYER - PIERCY)
CITY OF SAN JOSE
COUNTY OF SANTA CLARA,
STATE OF CALIFORNIA