



***Role of the Executive Program
Advisor in Implementation of the
Plant Master Plan***

***Treatment Plant Advisory Committee Meeting
May 16, 2013***

AGENDA

- Executive Program Advisor Background
- Executive Program Advisor Role
- Program Goals

Mike Gritzuk: Background

- § Over 35 years as director of several large public water and wastewater utilities
- § Executive responsibility for implementing several CIPs exceeding \$1.0 billion
- § Successful program delivery utilizing both traditional and alternative delivery methods
- § Experienced with large program ramp ups with similar scheduling & timing challenges

Major Programs Delivered

§ Pima County Regional Wastewater
Reclamation Department (RWRD)

Tucson, AZ

§ City of Phoenix Water Services Department

Phoenix, AZ

Pima County Regional Wastewater Reclamation Department

- Department Director, 6 years
- Wastewater & reclaimed water service for approximately 1 million residents
- Five-year CIP exceeding \$1 billion
- Complex scope & regulatory deadline
- DBO, DB & CM@R delivery methods
- Original Program Budget: \$720M
- Final Cost: \$660M

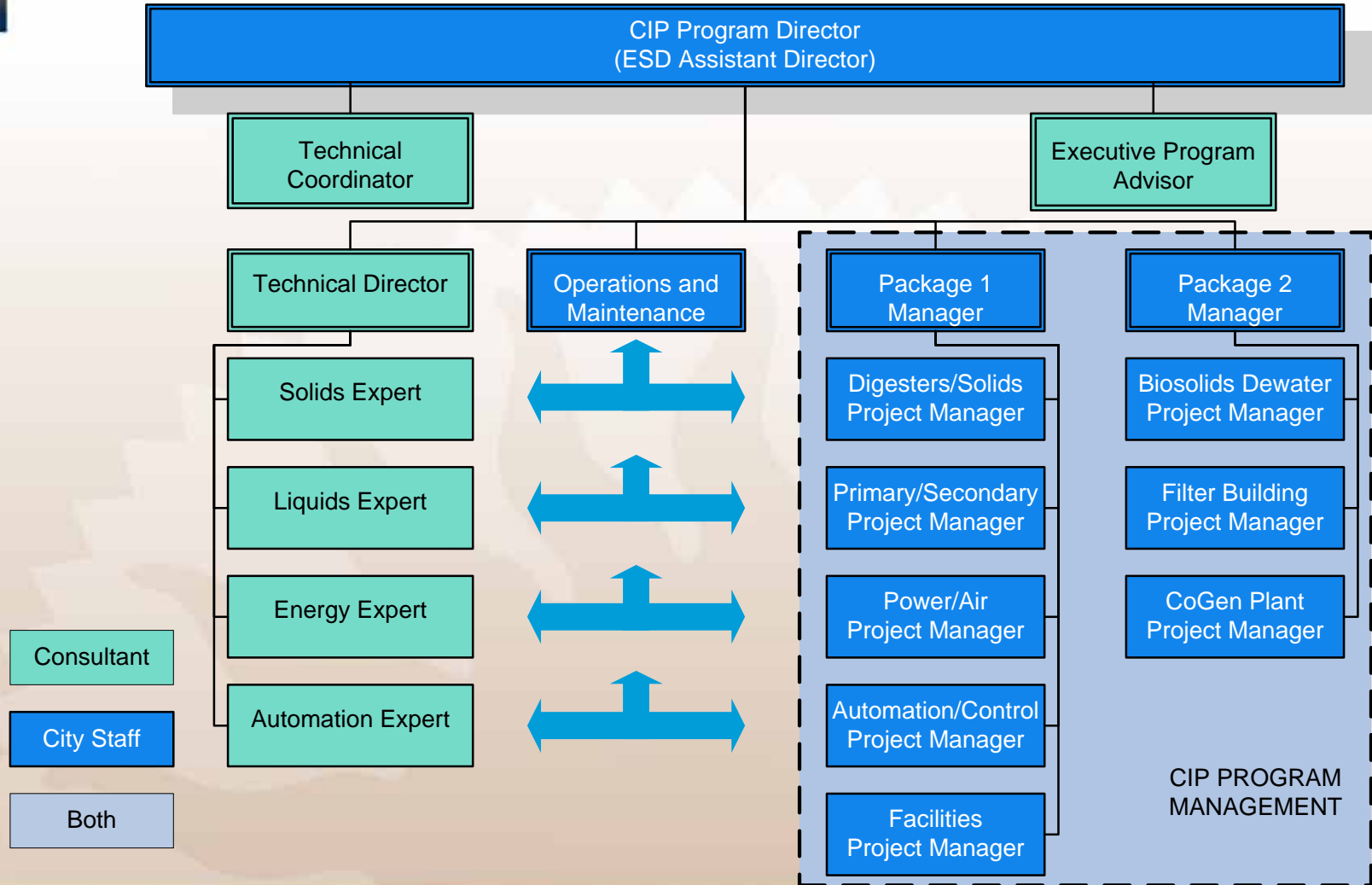
City of Phoenix Water Services Department

- Department Director, 17 years
- Regional water system serving over 1 million residents
- Wastewater system serving 6 cities, and over 2.5 million residents
- Five-year CIP exceeding \$1.5 billion
- Major capital expansion projects
- DBO & CM@R delivery methods

Similarities to SJ/SC Regional Wastewater Facility CIP Program

- Large capital program ramp up
- Limited staff
- Regulatory drivers and timing pressures
- Multiple priorities and stakeholders
- Complex scopes and new technologies
- Fiscal and budget adherence

Organizing for Success



Role of Executive Program Advisor

- Provide recommendations that guide an integrated team of ESD and PW staff, and outside consultants.
- Provide executive-level advice and guidance to scope, sequence, and projects.
- Monitor and advise on budget.
- Evaluate and prioritize phases and schedules.

Role of Executive Advisor (cont.)

- Provide expertise and recommendations in project delivery methods.
- Assist in selecting and negotiating scope of services and contract price.
- Identify and assist early critical decisions.
- Work closely with O&M staff to keep operational and in regulatory compliance.



Program Delivery Guiding Principles

- Sustainability
- Environmental Stewardship
- Stakeholder Acceptance
- Quality Cost-Effective Projects
- Decisions Based on Proven Assumptions and Sound Engineering
- Establish and Maintain a Team Culture of On Time Within Budget

