

SAN JOSÉ - SANTA CLARA
REGIONAL WASTEWATER FACILITY

Plant Master Plan Adoption

Treatment Plant
Advisory Committee

November 14, 2013



San José-Santa Clara
Regional Wastewater Facility



Environmental Services

Delivering world class utility services and programs to improve our health, environment, and economy

Overview

- Staff Recommendations
- Schedule
- Policy Alignment
- Master Plan Development
- Response to Stakeholders
- Staff Recommended Alternative
- General Plan Amendment Proposal
- Rebuilding the Facility
- Summary



STAFF RECOMMENDATION

- Recommend that the City Council adopt the Plant Master Plan with the staff-recommended land use component

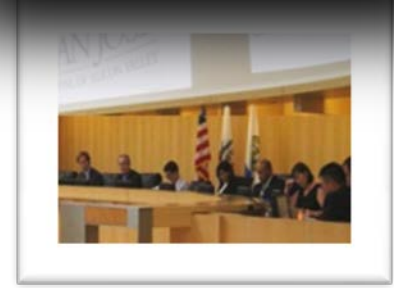


Schedule



2013

EIR Certification and Final Plan Approval by City Council



2014 & Beyond



PMP Reliability Projects Begin

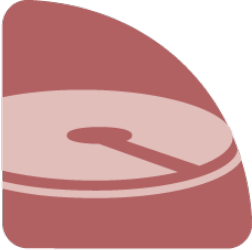


San José-Santa Clara
Regional Wastewater Facility

Policy Alignment

Plant Master Plan Goals

operational
Result in a reliable, flexible Plant that can respond to changing conditions.



economical
Maximize economic benefits for customers through cost-effective options.



environmental
Improve habitat and minimize impacts to the local and global environment.



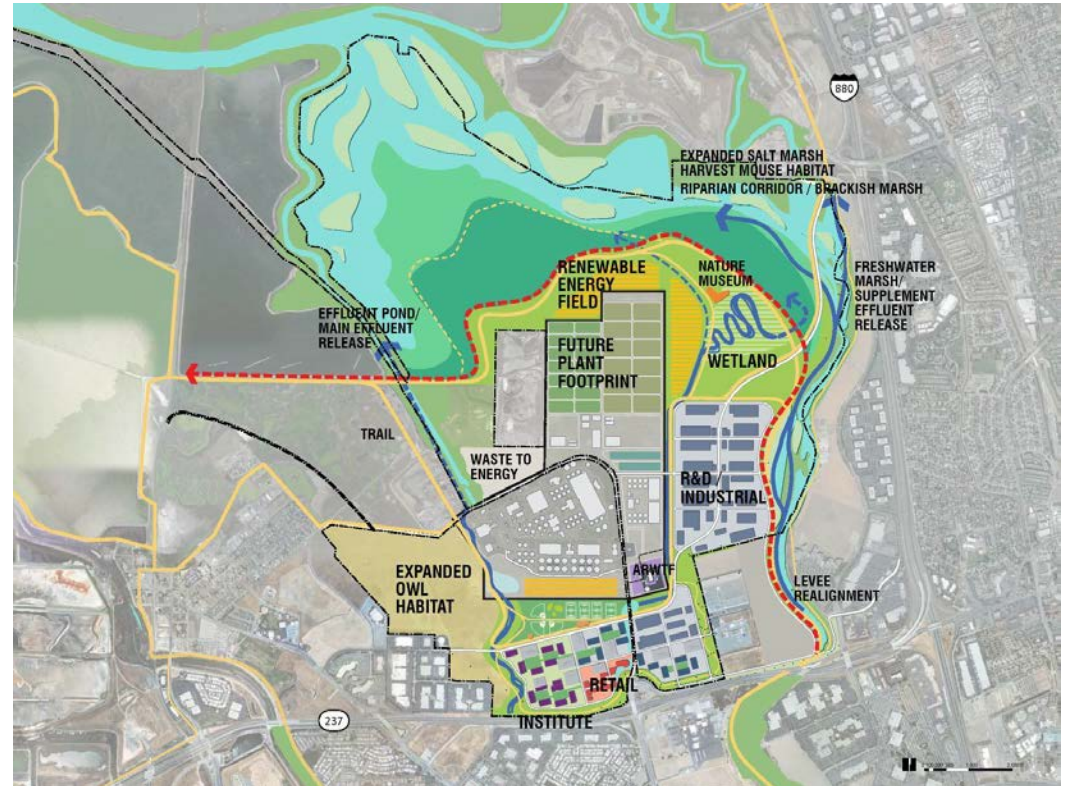
social
Maximize community benefits through improved aesthetics and recreational uses.



Master Plan Development

April 2011

- Preferred Alternative approved by Council
- Aligned with Envision 2040 and Project Goals



Response to Stakeholders

- Flood Protection and Sea-Level Rise



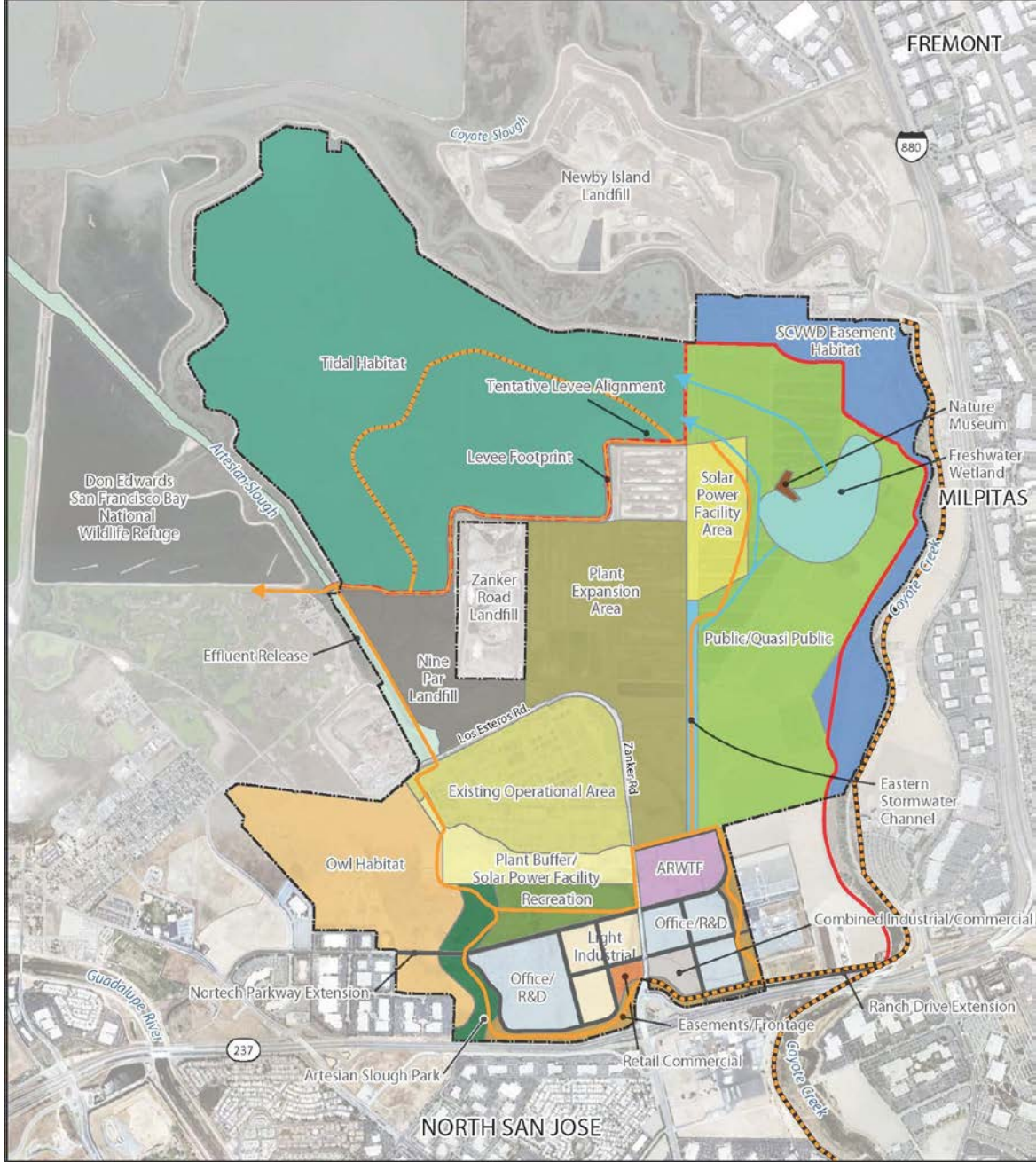
Response to Stakeholders

Program vs. Project-level CEQA Analysis

- **Program-level**
 - Allows for earlier and more comprehensive evaluation where implementation is still uncertain
 - Provides a foundation of analysis to adequately characterize cumulative impacts and inform subsequent CEQA analysis
 - Does not mean review and analysis under CEQA is over
- **Project-level**
 - Utilizes program-level analysis completed at an earlier time
 - Where project details are already known and project impacts can be quantified
 - Impact “significance” identified at a program-level is re-evaluated and confirmed or revised, based on relevant information

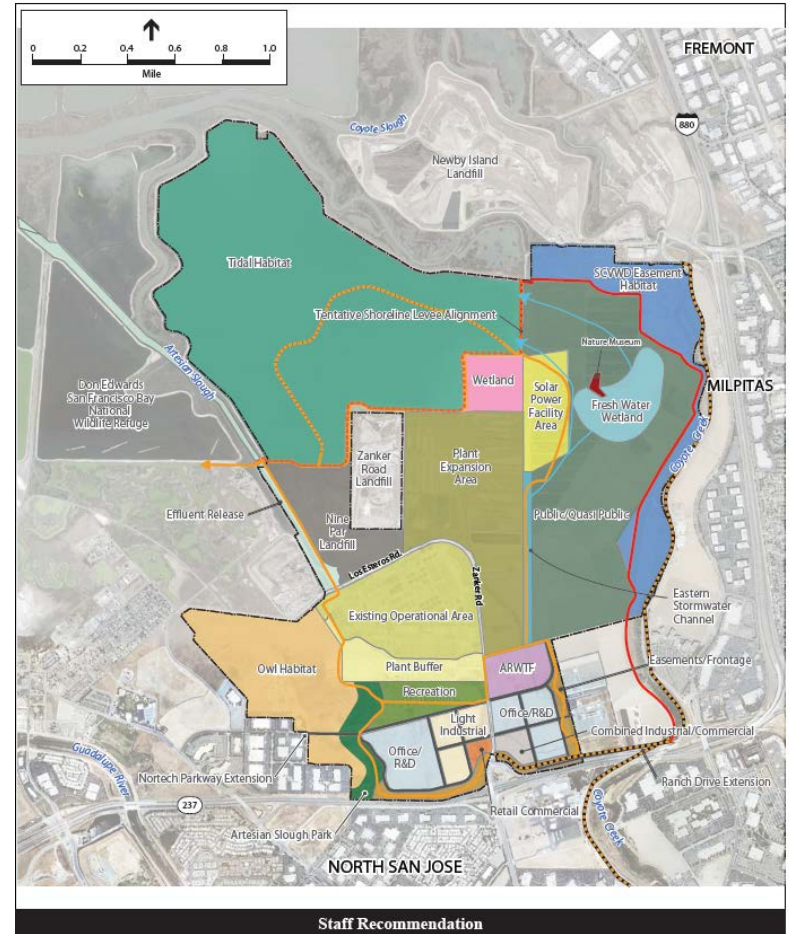


Staff Recommended Alternative



Staff Recommended Alternative

- Operational Area - 618 acres
- Habitat Area – 1,173 acres, including:
 - Burrowing Owl Habitat -180 acres (only 3 acres required as mitigation)
 - Retained Wetland – 35 acres
- Recreational Uses, including:
 - Community park and sports facility 40 acres
 - Trails 9 miles
- Economic Development – 159 acres
- Other lands 681 acres

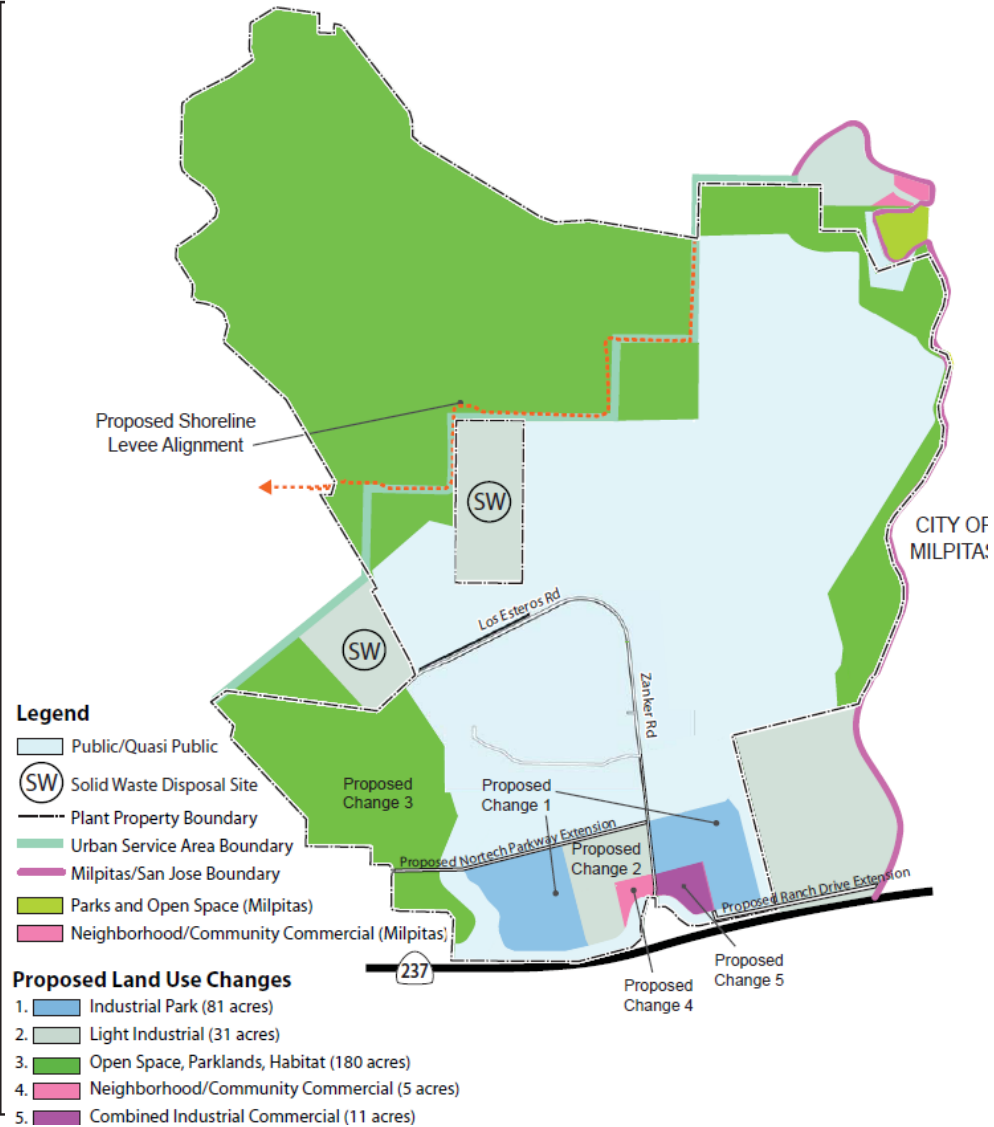


Staff Recommended Alternative

- Approximately 17,000 jobs were planned by Envision 2040 in this area
- Economic Development 159 Acres
 - Light Industrial 31 acres
 - Industrial Park 81 acres
 - Combined Industrial/Commercial 11 acres
 - Retail 5 acres
 - Roads 31 acres



General Plan Amendment Proposal



Rebuilding the Facility

- For Facility Rehabilitation Projects, delays would significantly impact the biosolids transition project and its odor control features.
- Additional delays impact the timing and ability of the Tributary Agencies to budget for needed capital improvement.



Summary

- A Balanced Plan
- Operational Area - 618 acres
- Habitat Area – 1,173 acres, including:
 - Burrowing Owl Habitat -180 acres
 - Retained Wetland – 35 acres
- Recreational Uses, including:
 - Community park and athletic facility 40 acres
 - Trails 9 miles
- Economic Development – 159 acres
- Other lands 681 acres

