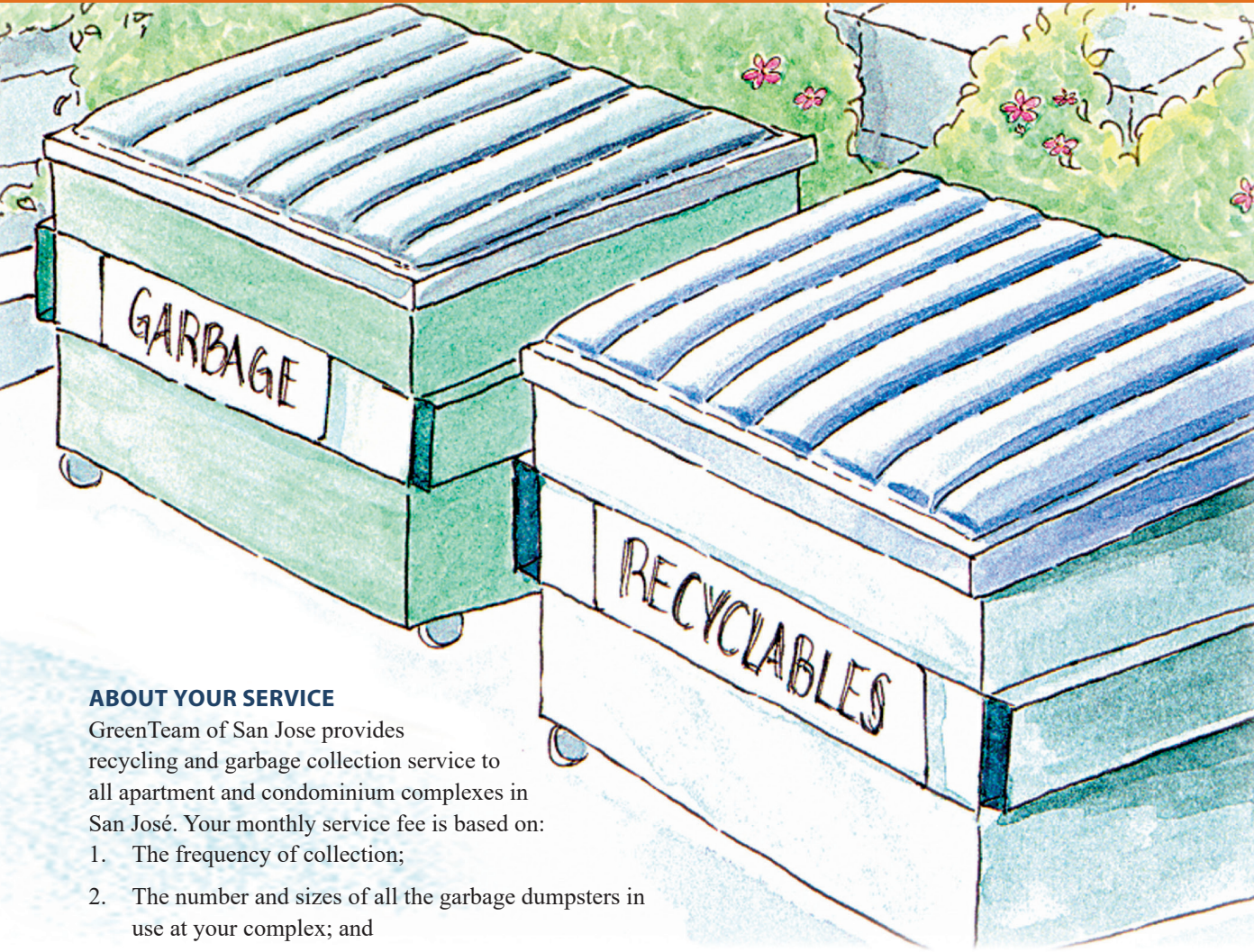




RECYCLE PLUS SERVICES & RATES

A Guide for Multifamily Property Managers & Owners

Rates effective July 1, 2021– June 30, 2022



ABOUT YOUR SERVICE

GreenTeam of San Jose provides recycling and garbage collection service to all apartment and condominium complexes in San José. Your monthly service fee is based on:

1. The frequency of collection;
2. The number and sizes of all the garbage dumpsters in use at your complex; and
3. The distances and numbers of containers (garbage or recycling) that need to be pushed by the driver into an accessible position for collection.

RECYCLING – IT’S THE LAW!

California’s Mandatory Commercial Recycling Law (AB 341) requires all multifamily residential dwellings of five or more units to recycle. To comply, ensure that your complex has recycling bin or cart service. Garbage rates include once a week collection of recycling bins or carts. Recycling is easy and helps save resources. All recyclables – newspaper, paper, cardboard, cans, glass bottles and jars, cartons, plastics (1-7), small metal appliances, and bags of clean textiles – go together into the recycling bin or cart. The more your residents recycle, the more successful you can be at controlling garbage service fees.

Table A MONTHLY RATES FOR GARBAGE COLLECTION SERVICE

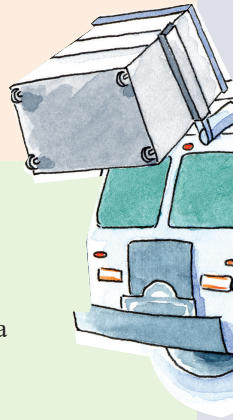
These rates include once a week collection of the same size recycling bin.

NUMBER OF COLLECTIONS PER WEEK

BIN SIZE (cu yd)	1	2	3	4	5	EXTRA PICKUP
1	\$ 140.92	\$ 255.25	\$ 369.61	\$ 483.99	\$ 598.36	\$ 60.64
1.5	\$ 177.02	\$ 324.77	\$ 472.55	\$ 620.34	\$ 768.08	\$ 68.99
2	\$ 214.04	\$ 395.25	\$ 576.45	\$ 757.64	\$ 938.81	\$ 77.41
3	\$ 286.35	\$ 534.42	\$ 782.44	\$ 1,030.49	\$ 1,278.48	\$ 94.21
4	\$ 358.71	\$ 673.61	\$ 988.44	\$ 1,303.33	\$ 1,618.23	\$ 111.03
5	\$ 431.01	\$ 812.71	\$ 1,194.47	\$ 1,576.22	\$ 1,957.95	\$ 126.93
6	\$ 503.36	\$ 951.95	\$1,400.51	\$ 1,849.05	\$2,297.65	\$ 144.61
8	\$ 648.01	\$ 1,230.28	\$ 1,812.50	\$ 2,394.75	\$ 2,977.02	\$ 178.21

NOTES:

- For bins without wheels sizes 1-cu. yd. to 5-cu. yd., the monthly service rates above are reduced by \$4.00 multiplied by the number of collections per week. The monthly service rates for 6- and 8-cu. Yd. bins already include the \$4.00 deduction.
- Additional recycling capacity and/or collection frequency to be considered by the Director of Environmental Services upon request.



ABOUT PUSH SERVICES

If you are unable to get the dumpsters, carts, or bins at your complex into a serviceable position, GreenTeam may be able to do the job for you. For each dumpster, cart, or bin that is moved into a serviceable position by the truck driver, a fee for push services is added to your bill. Push services for a garbage dumpster include a push of equal distance for a recycling bin or set of carts. Push services are limited to containers that are 3 cubic yards or smaller. (See Table B.)

Drivers are able to move dumpsters, carts, or bins only on paved surfaces at level grades. The dumpsters, carts, or bins are returned to the enclosure by the driver after collection. Call GreenTeam at (408) 282-4400 to assess push services for your complex, if needed.

Table B MONTHLY RATES FOR PUSH SERVICES FOR GARBAGE & RECYCLING CONTAINERS

NUMBER OF PUSHES PER WEEK

DISTANCE (in ft)	1	2	3	4	5	EXTRA PICKUP
Up to 25	\$ 31.54	\$ 63.10	\$ 94.66	\$ 126.22	\$ 157.77	\$ 19.55

NOTES:

- For regular pushes greater than 200 feet, the monthly charge is \$31.54 multiplied by the number of 25 foot increments multiplied by the number of collections per week. Example: For pushes of 276-300 feet, the number of 25-foot increments is 12; the monthly charge for pushes of 276-300 feet for collections performed 3 times per week is $\$31.54 \times 12 \times 3 = \$1,135.44$
- For extra pick-ups with pushes greater than 200 feet, the push charge is 0.62 times \$31.54 multiplied by the number of 25 foot increments.

COLLECTION TIMES

All garbage dumpsters and recycling bins or carts must be in their serviceable locations by 6 AM on the designated collection day(s). Collection may occur any time between 6 AM and 6 PM on your service day.* Times may vary due to traffic and weather conditions, equipment problems, or other unforeseen circumstances.

**Note: In certain downtown locations, collection occurs between 12 AM and 6 AM. Please contact GreenTeam at (408) 282-4400 for more information.*

AFTER COLLECTION

Help keep streets clean by pulling your bins and dumpsters off the street soon after collection. Street sweeping vehicles must maneuver around obstacles. If bins and dumpsters are left on streets, street sweepers may not be able to sweep the streets in front of your complex on street sweeping day.

CONTAINER LIMITS

Dumpsters or carts may only be filled up to the lip of the container, and the lids must be able to close. Overflowing or overloaded garbage and recycling containers cannot be collected. For occasional overages, call GreenTeam customer service at (408) 282-4400 to arrange an extra pickup of materials.



When drivers attempt to pick up overflowing dumpsters, the contents may spill out on the ground and create a mess. For continual problems with overflowing containers, contact GreenTeam to arrange a larger-sized bin or more frequent collection.

An overloaded container is one that is filled with unusually heavy or inappropriate material (including construction, remodeling, and landscaping materials such as concrete, dirt, sod, etc.). Overloaded containers cannot be serviced safely and will not be collected.

Garbage dumpsters are for household garbage only. To recycle or throw away construction and remodeling debris, visit our website at www.sjenvironment.org/recyclers-haulers to arrange for recycling services or a debris box.

FREE JUNK PICKUP

To schedule service for pickup of large items such as appliances, tires, mattresses, sofas, and other furniture, call GreenTeam at (408) 282-4400. Junk Pickup is available for no additional charge.

ILLEGAL DUMPING

Call (408) 535-3500 to report illegal dumping in streets. Illegal dumping is a crime, with fines up to \$10,000.

YARD TRIMMINGS

On-street collection of yard trimmings is available in most areas at no additional charge. Optional yard trimmings carts are available for a monthly charge of \$14.79 per cart. To arrange on-street yard trimmings collection or to order yard trimmings carts, call GreenWaste Recovery at (408) 283-4800.

CONTAINER CLEANING	
Annual cleaning upon request	No charge
Each additional cleaning (per bin or set of 2 carts)	\$ 25.00
SERVICE LEVEL CHANGES	
Annual service level changes	No charge
Additional service level changes (per bin or set of 2 carts)	\$ 25.00
COMPACTOR SERVICE	
(per pickup per cubic yard)	\$ 67.38

LOCK SERVICES	BINS
Lock installed, plus key	\$ 279.47
Repaired, including lock	\$ 180.83
Repaired, excluding lock	\$ 152.65
Removed (damaged by customer)	\$ 206.63
Removed (requested by customer)	\$ 103.29
Welding or retrofit of locks (rate per hour)	\$ 102.35

For additional services not listed in this Guide, call GreenTeam at (408) 282-4400.



(408) 282-4400

CALL GREENTEAM TO:

- Assess your complex’s recycling and garbage service needs and potential for cost savings.
- Request free, easy-to-read, trilingual labels for all recycling and garbage containers at your complex.
- Order free recycling reference guides for residents (in English, Spanish, or Vietnamese).
- Order free trilingual posters for enclosures or other common spaces.
- Set up recycling presentations or recycling facility tours for residents.



Environmental Services

Printed on recycled paper using soy-based inks. 0616/0K/00/IX/kz

In accordance with the Americans with Disabilities Act, this publication can be made available upon request in alternative formats, such as Braille, large print, audiotape, or computer disk. Requests may be made by calling (408) 535-3500 (voice) or (800) 735-2929 (California Relay Service).