

ELECTRIC TRANSMISSION SERVICE INTERCONNECTION APPLICATION

City Council - February 25, 2020



Lori Mitchell, Director of Community Energy

BACKGROUND AND COUNCIL DIRECTION

APRIL 2019

- PG&E Wildfire Mitigation Plan and power shutdowns (PSPS)

AUGUST 2019

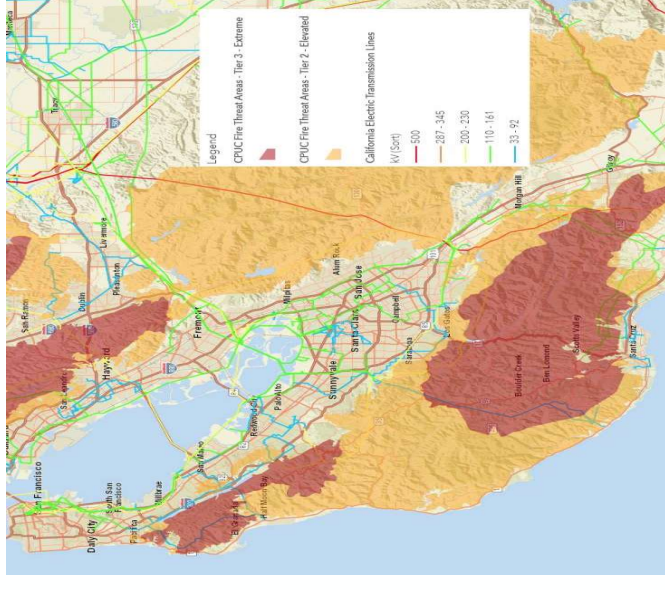
- City Council Study Session on Energy Resiliency

OCTOBER 2019

- PG&E executes 2 PSPS events
- Mayor releases PSPS: Making San Jose Grid-Resilient memo
- Google submits Downtown West Mixed-Use plan development application

NOVEMBER 2019

- Energy Resiliency work program and staffing resources approved by City Council



INTERCONNECTION PROCESS FOR WHOLESALE TRANSMISSION SERVICE

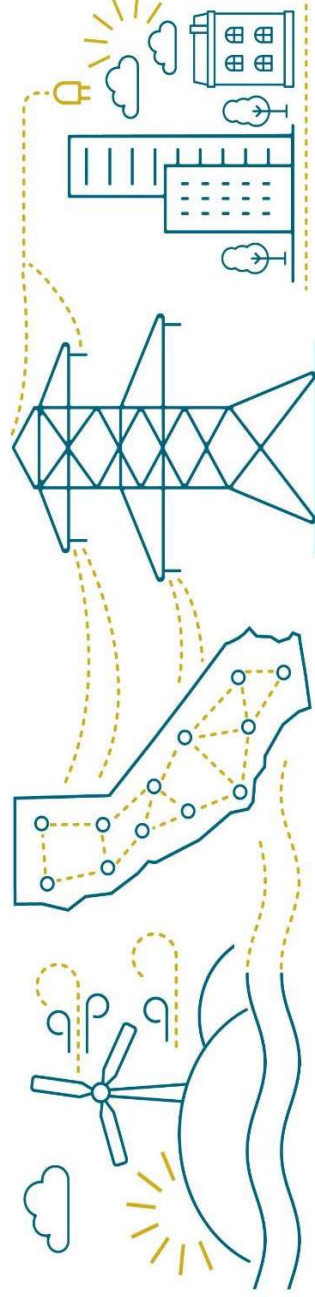
1. City prepares and submits Interconnection Application
2. PG&E performs System Impact Study
3. PG&E performs Facilities Study
4. City and PG&E negotiate and execute Interconnection Agreement
5. PG&E initiates design and construction of needed facilities

Submitting the application does not obligate the City to proceed with additional steps



PRELIMINARY FEASIBILITY AND BENEFITS

- Clear legal and regulatory path for City to provide electric service
- Greater opportunity for building an advanced microgrid with on-site renewable generation and energy storage
- Public Utility track record for safer, more reliable and efficient service



MOVING FORWARD

Follow-up Action	Targeted Completion
1. Final Legal and Regulatory Feasibility Study	March 2020
2. Prepare and submit Interconnection Application	April 2020
3. Negotiate, execute and perform PG&E System Impact and Facilities Studies	November 2020
4. Fully analyze City-Owned and Operated Electric Utility Option	November 2020
5. Negotiate/execute PG&E Interconnection, Design and Construction Agreements	January 2021
6. Continued coordination with Google and Google Project	Ongoing

RECOMMENDATION AND KEY TAKEAWAYS

- Recommendation for City manager, in coordination with the City Attorney, to:
 - Prepare and submit a Wholesale Transmission Service Interconnection Application to Pacific Gas and Electric, and if appropriate,
 - Proceed with any required Pacific Gas and Electric System Impact and Facilities Studies.
- Key Takeaways
 - First step in the process provides time to collectively assess and decide further actions
 - Aligns with Council priorities and direction
 - Potential for increased energy resiliency, sustainability, reliability and efficiency
 - Continued collaboration, analysis and City Council engagement

ELECTRIC TRANSMISSION SERVICE INTERCONNECTION APPLICATION

City Council - February 25, 2020

QUESTIONS AND DISCUSSION

Lori Mitchell, Director of Community Energy