

# Downtown Transportation & Diridon Station Area Plans

DOWNTOWN PARKING BOARD | SEPTEMBER 16, 2020

---

Jessica Zenk  
Deputy Director, DOT

Emily Breslin  
Transportation Planner

# Agenda

---

## **Transportation planning efforts 2020-2021**

- Diridon Station Area Plan- draft released October 2020
- Downtown Transportation Plan- 2020-2021

## **Questions & discussion**

# Plan Boundaries

## Downtown West (2020)

- Mitigation
- Design guidelines

## Diridon Station Area Plan (DSAP) Update

- Key Deliverables
- List of Projects
  - TMA/Parking

## Diridon Integrated Station Concept Plan (DISC)

### Phase I

- Track Alignment
- Station Footprint

### Phase II

- Access Planning
- Refined Track Design

## Downtown Transportation Plan (DTP) 2020-2021

### Goals

- Support and Complement Places
- Improve Equity & Access; Circulation & Navigability; Streetscapes and Public Life

### Key Deliverables

- Engagement Plan
- Equity Framework
- Public Life Assessment
- Parking & Curbside Management Strategy
- Transportation Network Vision
- Prioritized List of Projects & Programs
- Conceptual Designs



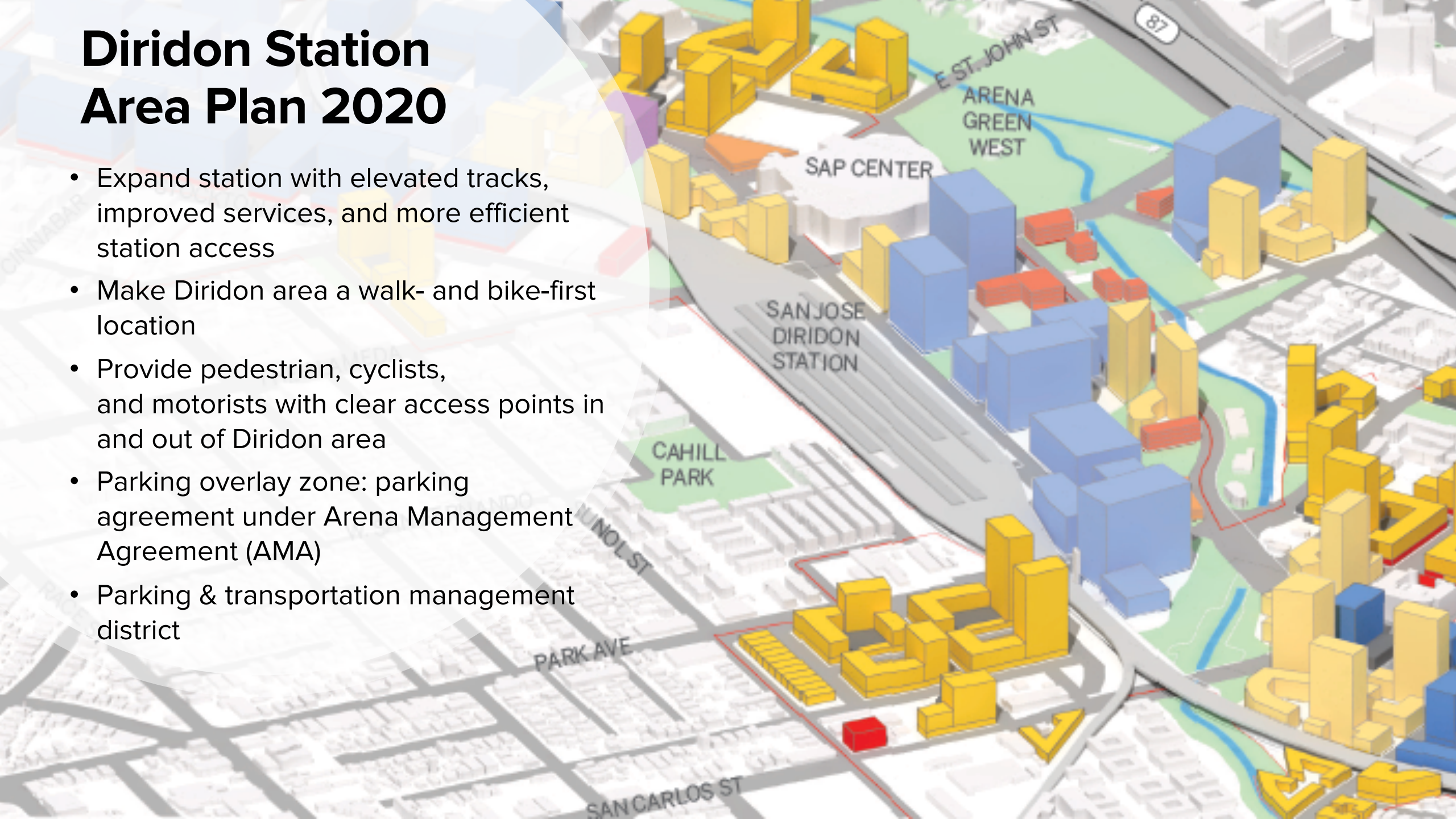
0 2000 4000 ft





# Diridon Station Area Plan 2020

- Expand station with elevated tracks, improved services, and more efficient station access
- Make Diridon area a walk- and bike-first location
- Provide pedestrian, cyclists, and motorists with clear access points in and out of Diridon area
- Parking overlay zone: parking agreement under Arena Management Agreement (AMA)
- Parking & transportation management district





# Diridon Station Area Parking & Transportation Management District *Elements*

---

**Implement parking benefits district** forming dedicated transportation enterprise fund with pre-determined expenditures

- Optional revenue sources could include new meter areas, parking tax, and assessment district

**Establish transportation management association (TMA)** that oversees administration and management of TDM programs and services and TDM monitoring & evaluation

**SAP parking overlay zone:** meet parking requirements set forth by the Arena Management Agreement

**Active parking management, including shared parking agreements** to utilize surplus private and public parking to meet peak demand from other user groups, E.G. event parking, visitors and employee need

# Parking & Transportation Management District *Goals*

---

**Local parking revenues go into improving quality of life in immediate surrounding area**

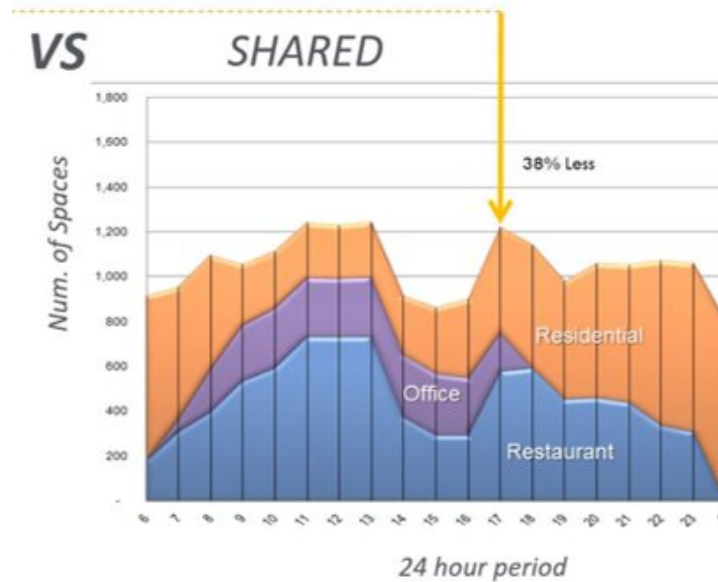
- Enhanced maintenance and infrastructure
- Streetscape improvements
- Improve access for non-auto modes



# DSA Transportation Management Requirements

## *Definitions*

---



← Programmatic

Parking management

→ Infrastructure



# Transportation Management Association (TMA)

---

TMAAs create nuanced, local programs and solutions that diversify mobility options, reduce single occupancy driving, and increase economic vitality

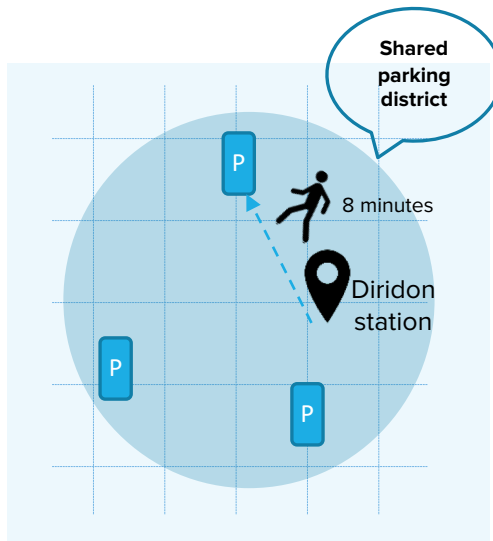
- Many commuters (at all income levels) in South Bay do not work for large employers with formal commute programs
- Ability to focus on local concerns / create tailored solutions to address first and last mile gaps
- Unified voice and increased coordination with local transit providers
- TDM monitoring and evaluation: increased transparency of TDM requirements and goals for new development projects
- Plays a role in "exemplary TDM program" attracting employers to downtown area

# Diridon Station Area Parking Management

---

## Intent

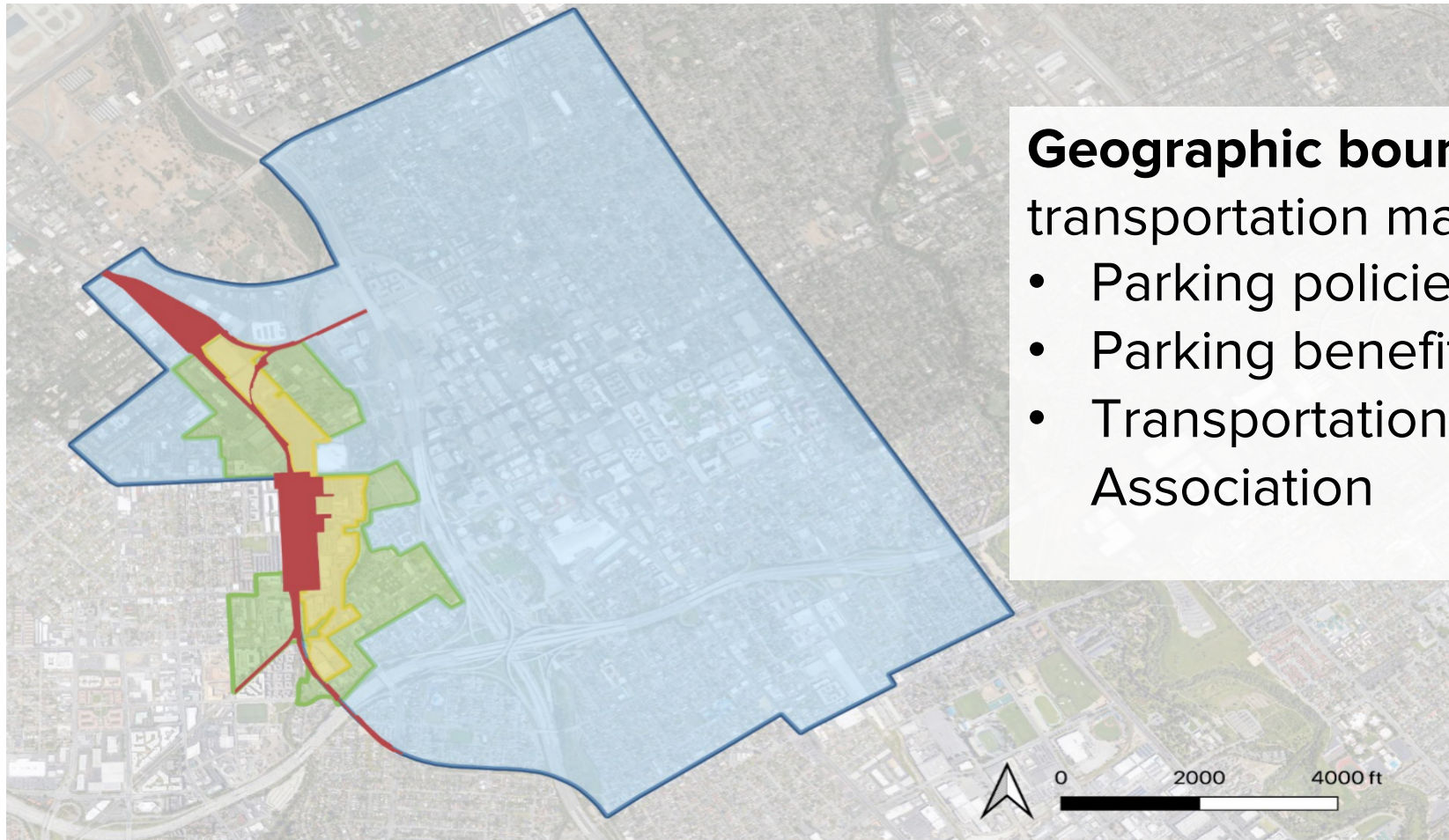
Encourage parking to be managed as a shared and priced resource, resulting in more efficient use of parking. Encourage a "park-once" environment in the Diridon area.



- Parking is priced, shared, and unbundled (applies to residential uses)
  - Require new off-street parking supply in the station area to be shared (excludes residential uses and small allowances for disabled and other special parking).
  - Recommend multiple landowners to enter into shared parking agreements, or parking to be provided for the whole district.

# Diridon versus Downtown San Jose: scale & scope

---

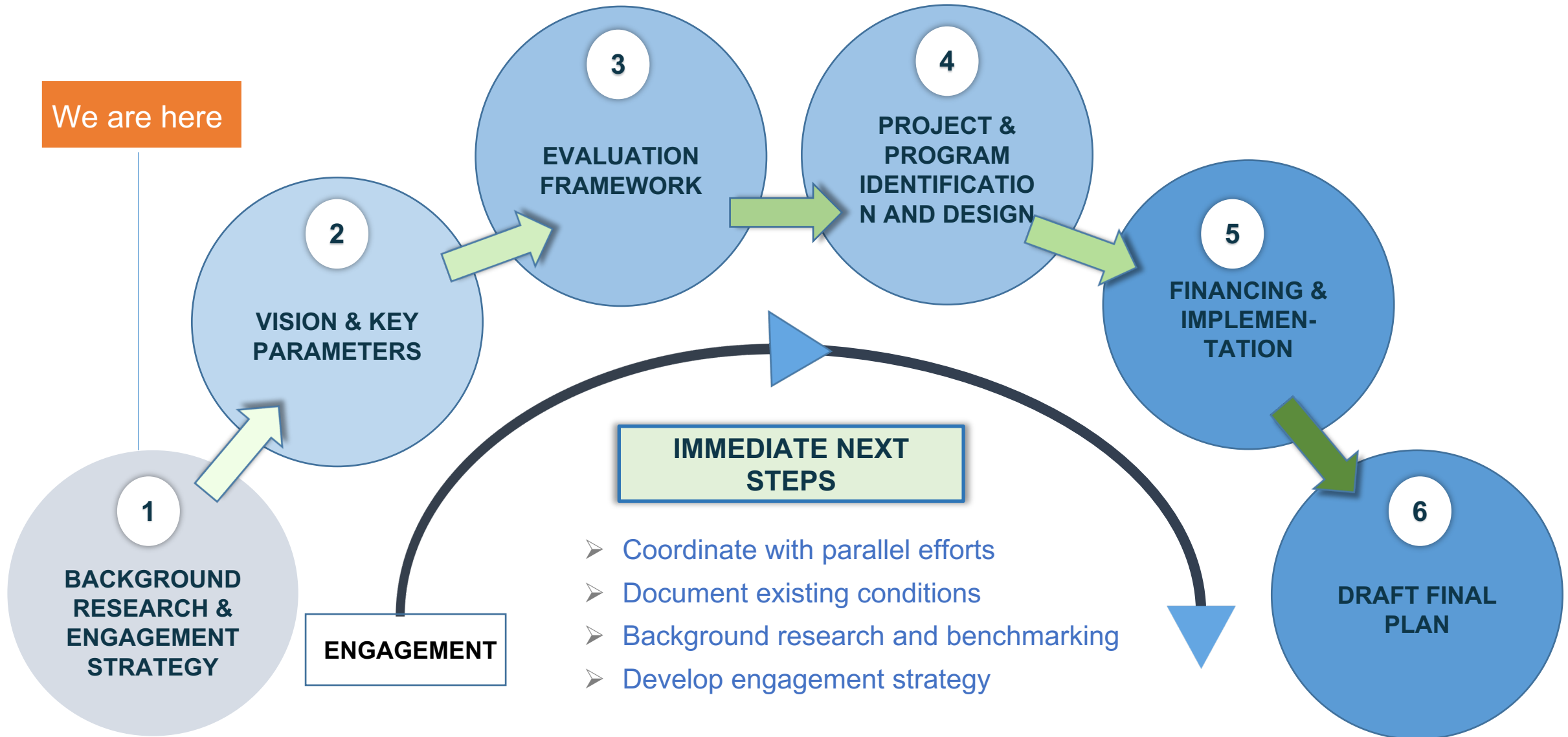


**Geographic boundaries** of parking and transportation management district

- Parking policies (e.g., shared)
- Parking benefits district
- Transportation Management Association



# Downtown Transportation Plan Process



# Upcoming Outreach & Events

Learn more and register for events  
at <http://movesanjose.org>

## Speaker Series (Oct)

- Public Life and Latinx Communities in Downtown – Past & Future (Spanish + English sessions)
- Asian Communities and Transportation in Downtown
- Women's Perspectives on Transportation in Downtown

## Upcoming Outreach Activities

- **Workshop #1** on October 7th from 5:30 – 7:30pm
- Business Focus Group meetings in late September/October
- Project Logo Contest – follow us on movesanjose social channels!
- Website and online survey at <http://movesanjose.org>

This content is also available in: [Español \(Spanish\)](#),  
[Tiếng Việt \(Vietnamese\)](#)

We've created a presentation to explain the changes coming to San Antonio and we would love to get your feedback after you're done watching. We would also love input on other potential changes we are considering for this corridor. You can also read our [project summary](#).



#### Bike Boulevard

Do you support the bike boulevard portion of the San Antonio project (17th to King)?

A bike boulevard is a street where cars and bikes share the travel lane and measures are in place to make everyone feel safe and comfortable.

- Strongly Against
- Against
- No Opinion
- Supports
- Strongly Supports

What, if anything, do you like about the bike boulevard portion of the San Antonio project?

What, if anything, do you dislike about the bike boulevard portion of the San Antonio project?

Are there any changes you would like to see to the bike boulevard portion of the San Antonio project?

[San Antonio Project Summary](#) - Learn about resurfacing San Antonio Street from 17th Street to Jackson Avenue and the associated street design changes.

#### Recent Outreach

[McLaughlin Avenue Safety Enhancement Project Information](#)  
[San Fernando Street Improvements Survey](#)  
[Naglee Avenue Project Survey](#)  
[One-way Vehicle Sharing Survey](#)  
[San Antonio Online Community Meeting](#)

#### Search

# Question and discussion

---

**Thank you!**

**[Emily.breslin@sanjoseca.gov](mailto:Emily.breslin@sanjoseca.gov)**