

Traffic Safety Enhancements (6th & Taylor Traffic Signal)

City of San José
Department of Transportation



Japantown Neighborhood Association Meeting
9/16/2020

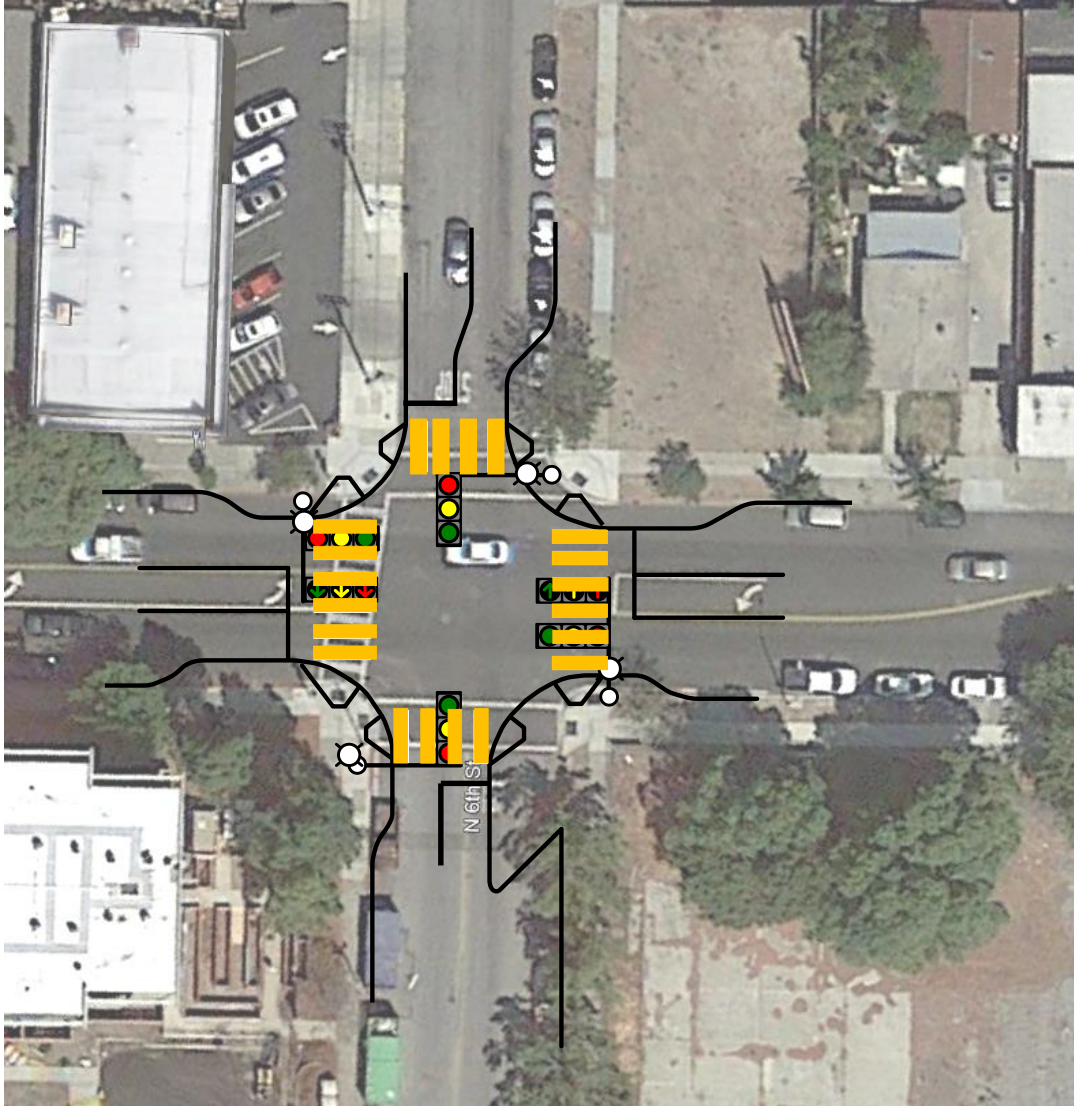
Background

- Uncontrolled left turn from Taylor onto 6th
- The sun affects visibility in the evening
- Two pedestrian fatalities occurred between 2012 and 2018



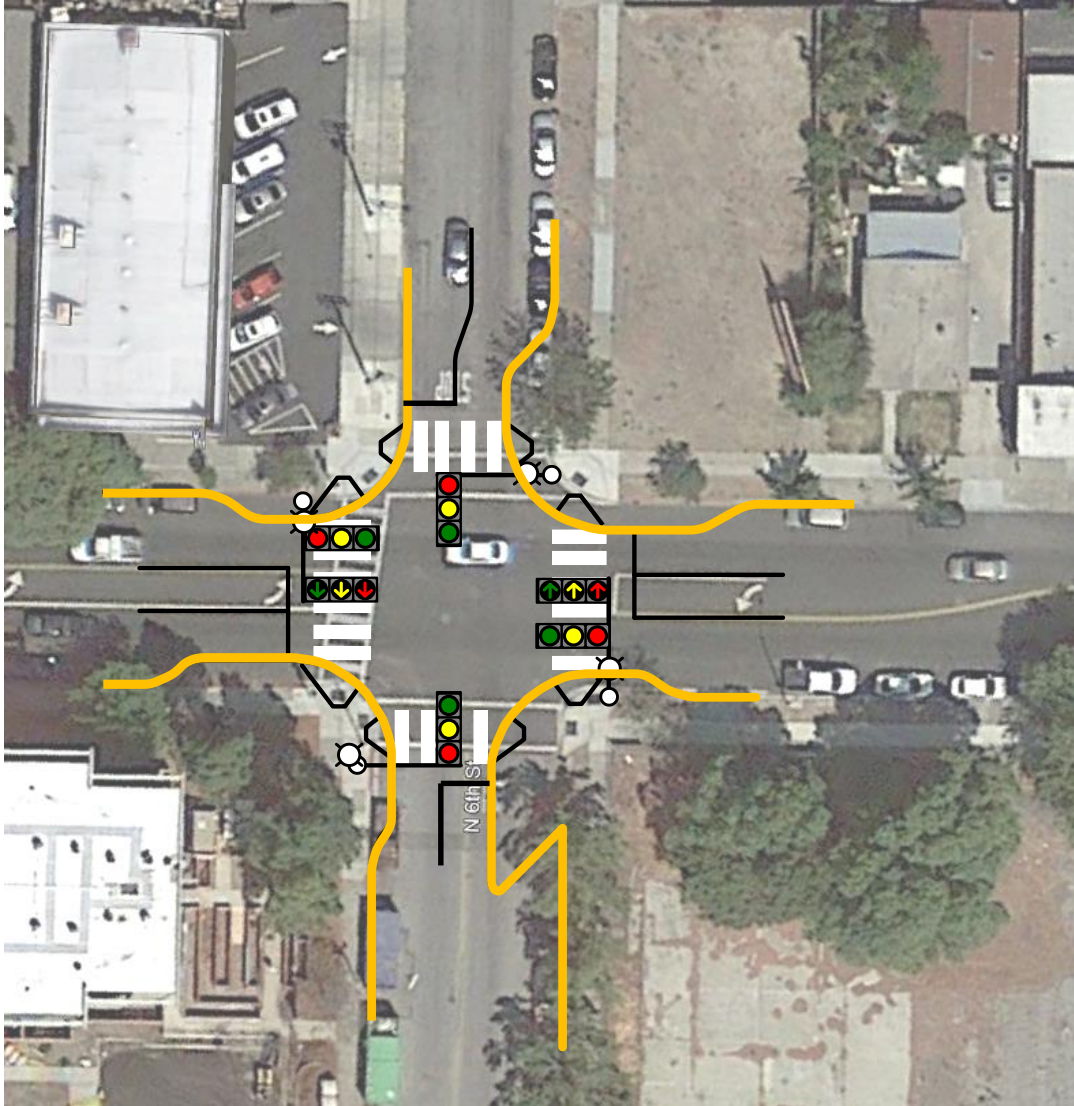
Rectangular Rapid Flashing Beacon installed in 2013 and upgraded in 2019

Safety Features



- **High visibility crosswalks**
- Curb bulb outs
- Accessible pedestrian signals
- Protected left turn on Taylor
- Leading Pedestrian Interval

Safety Features



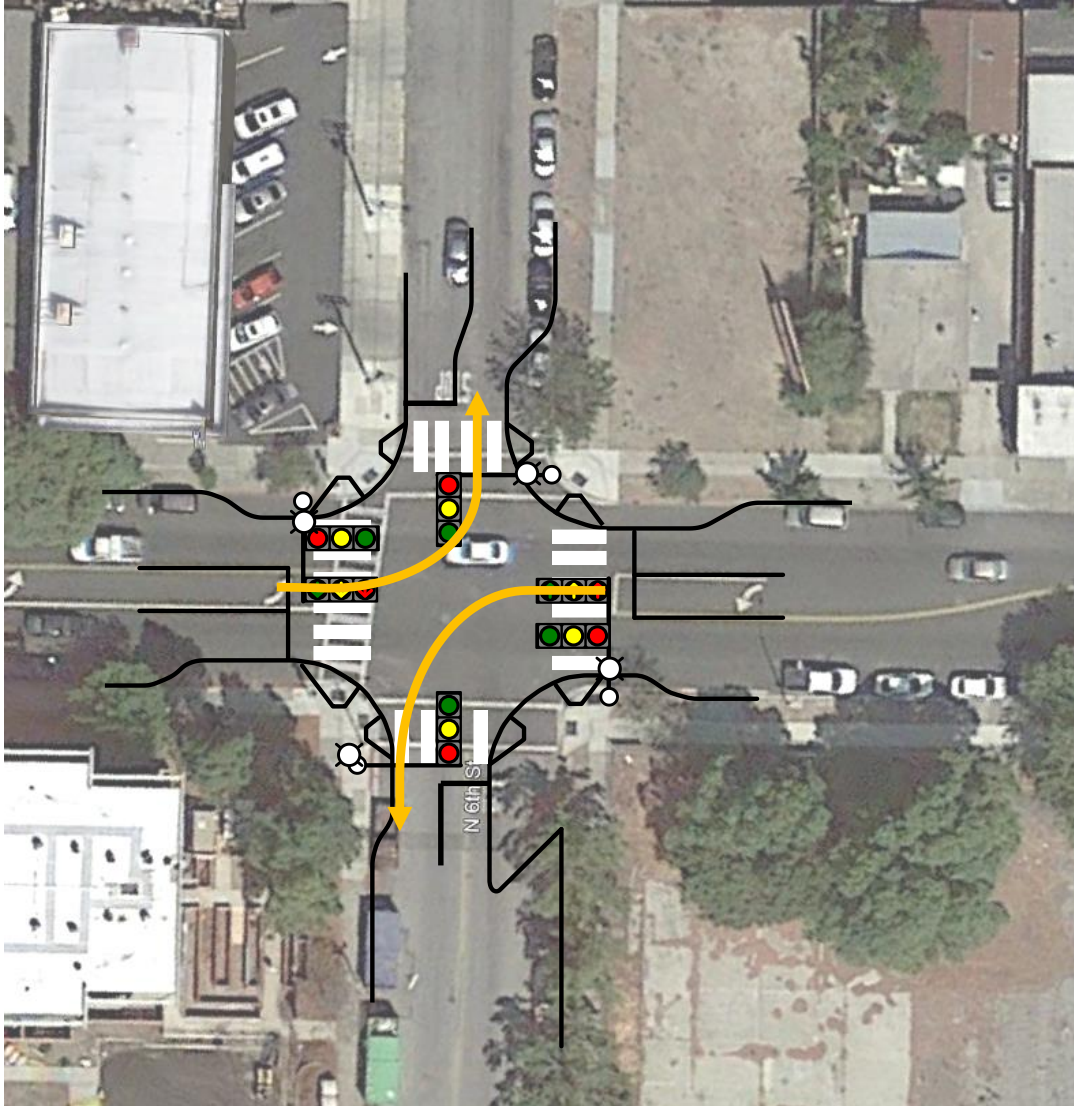
- High visibility crosswalks
- **Curb bulb outs**
- Accessible pedestrian signals
- Protected left turn on Taylor
- Leading Pedestrian Interval

Safety Features



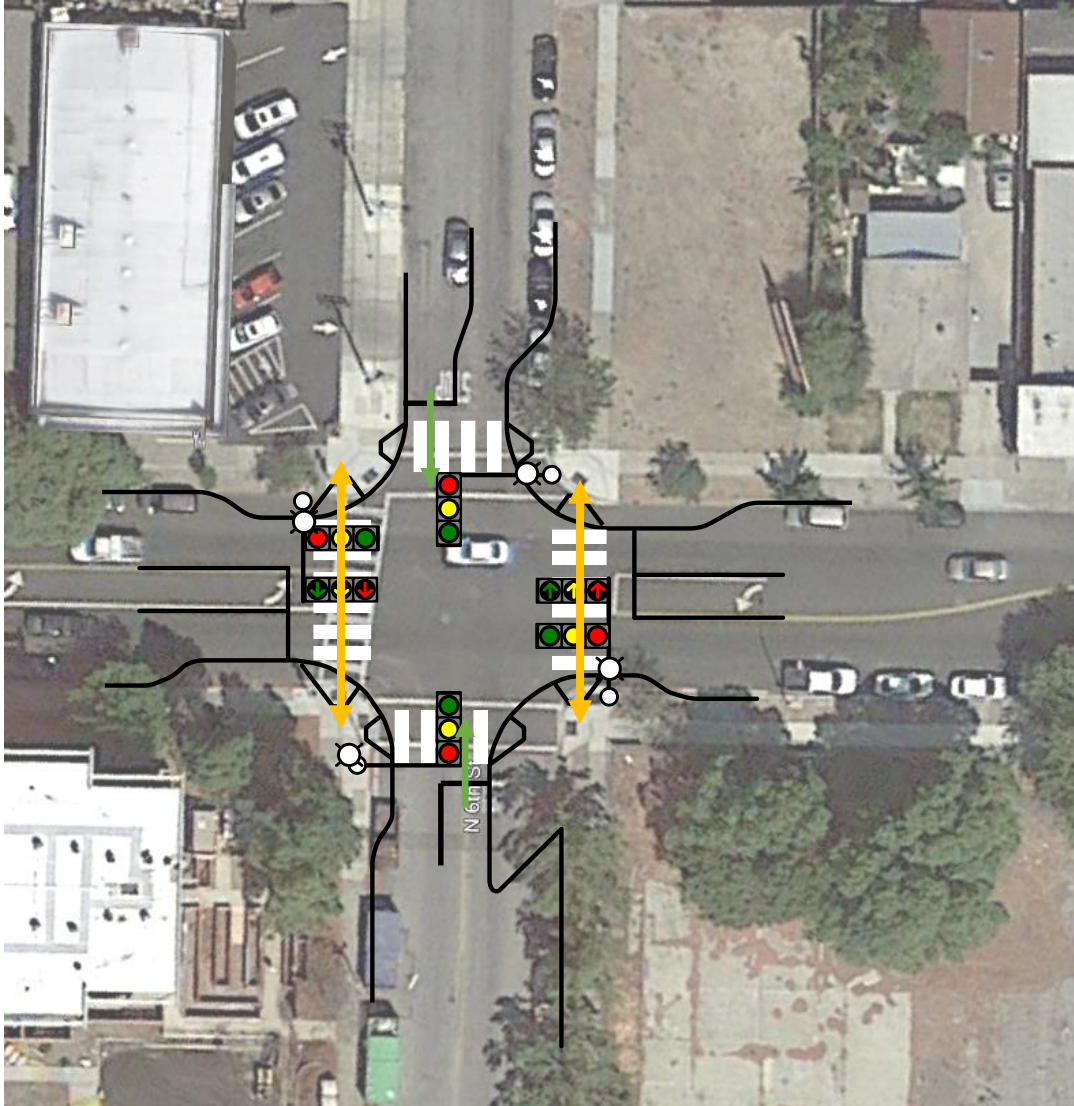
- High visibility crosswalks
- Curb bulb outs
- **Accessible pedestrian signals**
- Protected left turn on Taylor
- Leading Pedestrian Interval

Safety Features



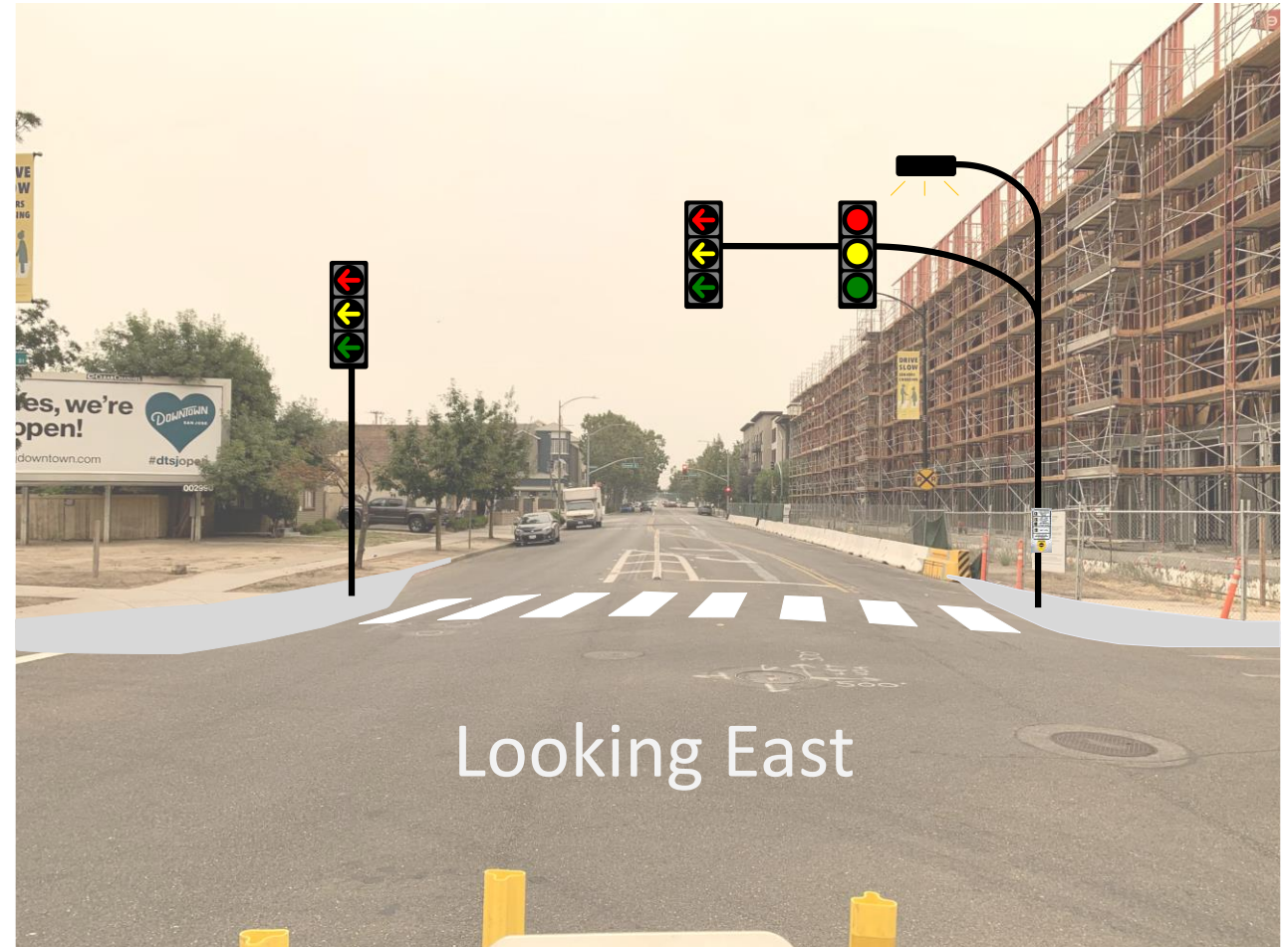
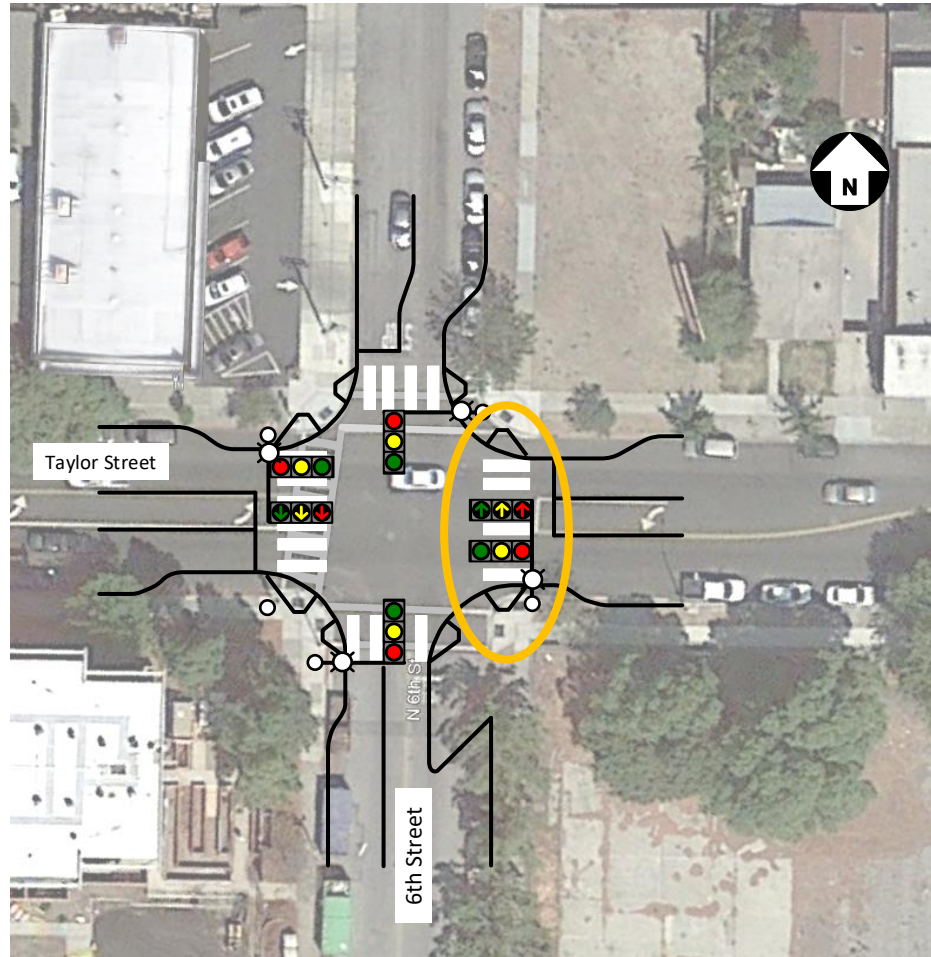
- High visibility crosswalks
- Curb bulb outs
- Accessible pedestrian signals
- **Protected left turn on Taylor**
- Leading Pedestrian Interval

Safety Features

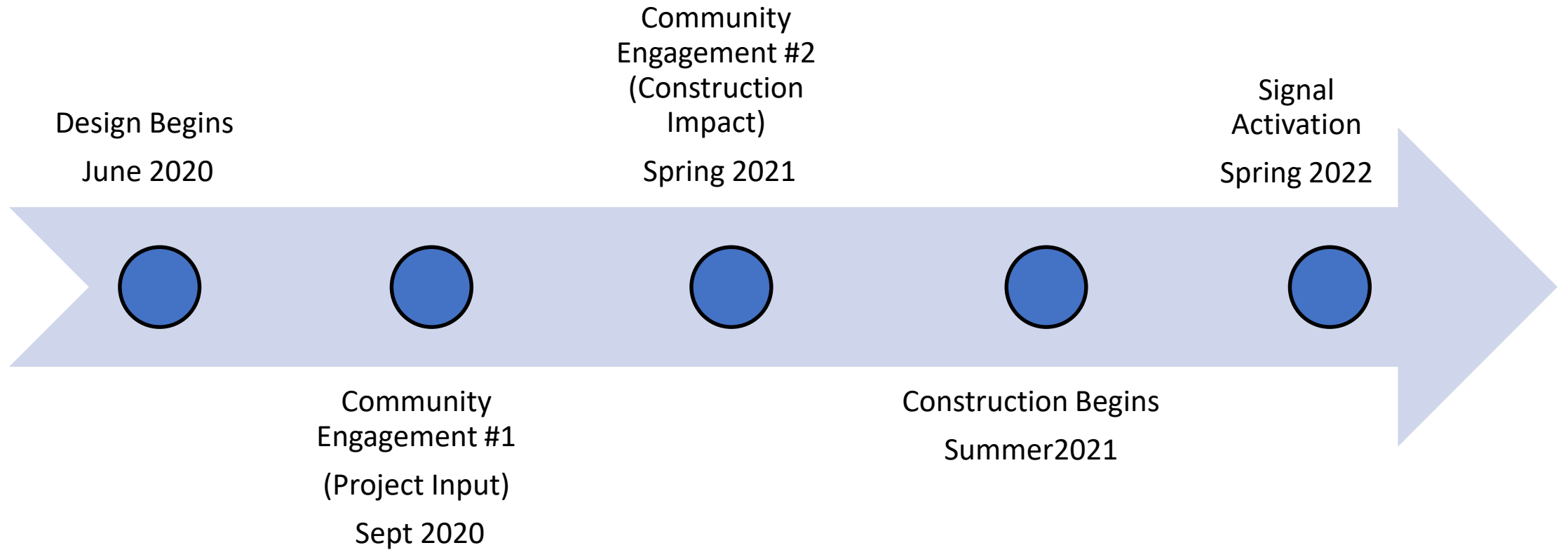


- High visibility crosswalks
- Curb bulb outs
- Accessible pedestrian signals
- Protected left turn on Taylor
- **Leading Pedestrian Interval**

Signal Rendering



Project Tentative Schedule





Q&A

Contact Information

Joshua.vanzee@sanjoseca.gov

(408) 975-3742