

ATTACHMENT 26:

U.S. Environmental Protection Agency (USEPA). 2019. *Environmental Justice Screening and Mapping Tool – City of San José, CA*. Available at: <https://ejscreen.epa.gov/mapper/>. Accessed on: 9/26/19.

Save as PDF

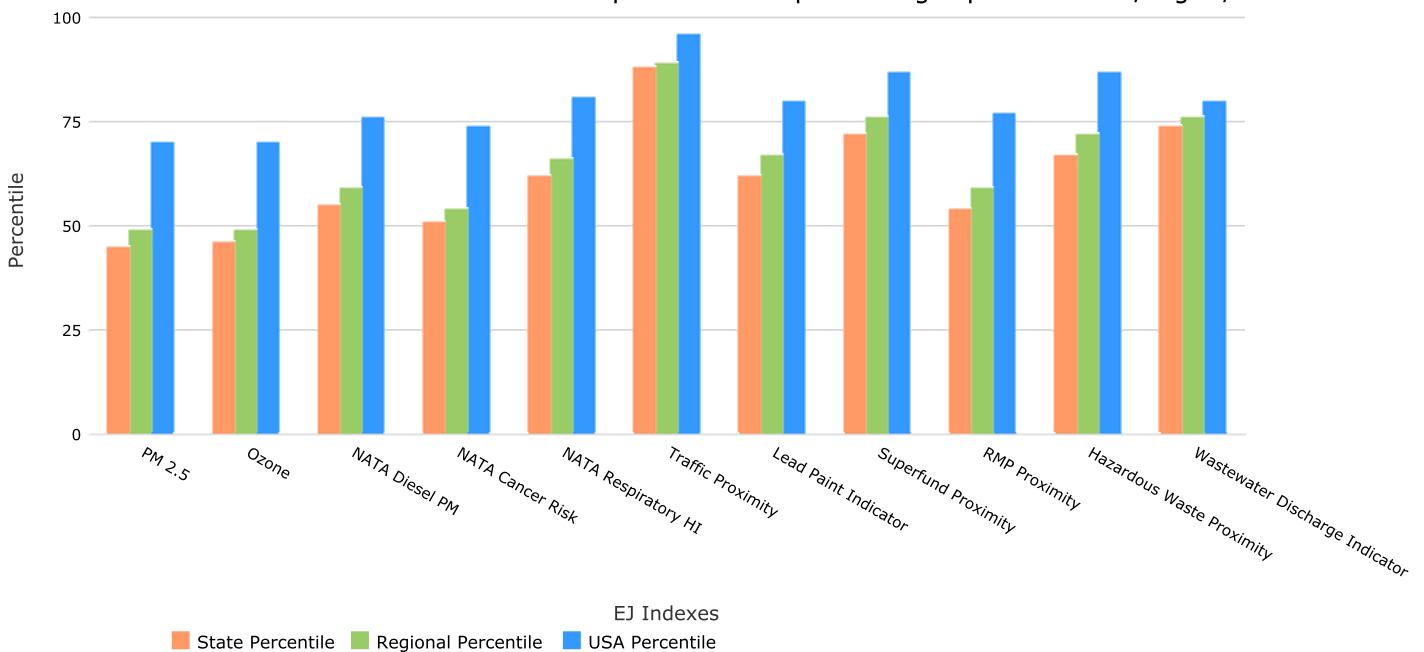


EJSCREEN Report (Version 2018)
1 mile Ring Centered at 37.323468,-121.904386
CALIFORNIA, EPA Region 9
Approximate Population: 28,714
Input Area (sq. miles): 3.14

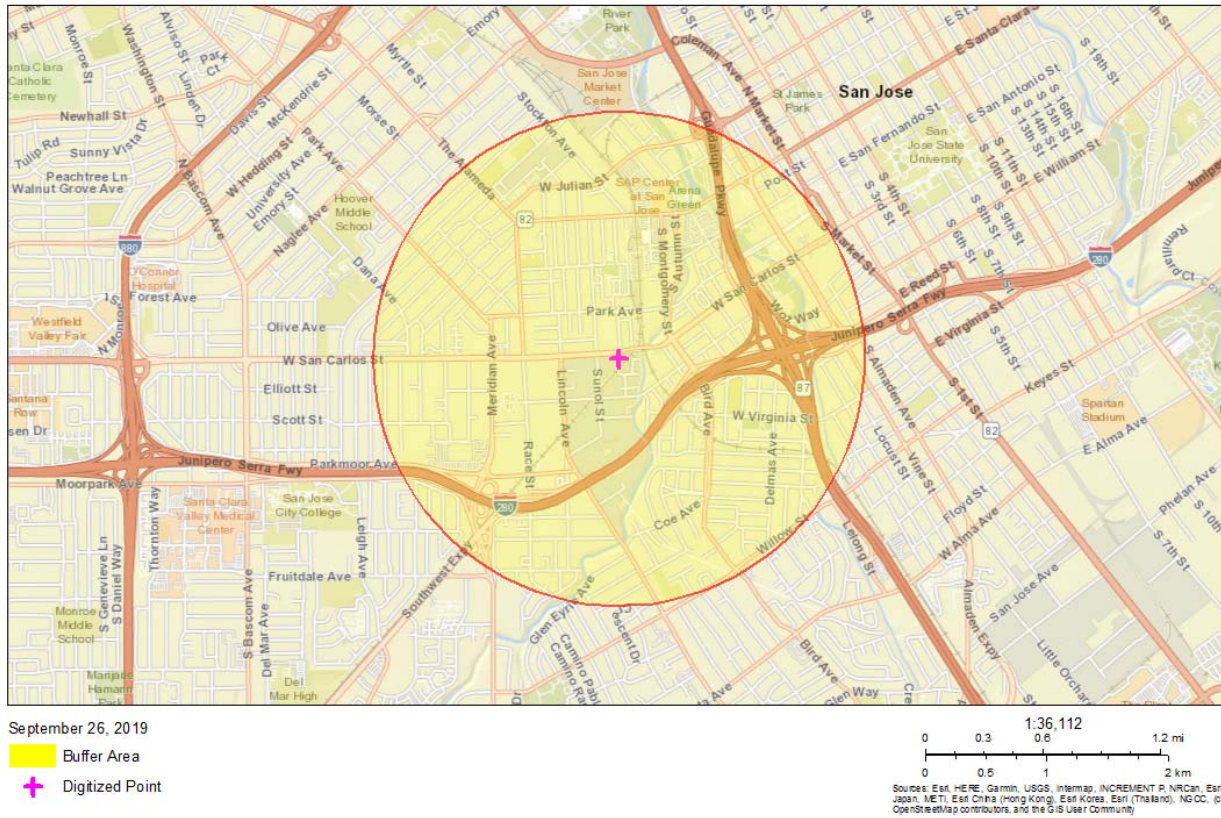


Selected Variables	Percentile in State	Percentile in EPA Region	Percentile in USA
EJ Indexes			
EJ Index for Particulate Matter (PM 2.5)	45	49	70
EJ Index for Ozone	46	49	70
EJ Index for NATA* Diesel PM	55	59	76
EJ Index for NATA* Air Toxics Cancer Risk	51	54	74
EJ Index for NATA* Respiratory Hazard Index	62	66	81
EJ Index for Traffic Proximity and Volume	88	89	96
EJ Index for Lead Paint Indicator	62	67	80
EJ Index for Superfund Proximity	72	76	87
EJ Index for RMP Proximity	54	59	77
EJ Index for Hazardous Waste Proximity	67	72	87
EJ Index for Wastewater Discharge Indicator	74	76	80

EJ Index for the Selected Area Compared to All People's Blockgroups in the State/Region/US



This report shows the values for environmental and demographic indicators and EJSCREEN indexes. It shows environmental and demographic raw data (e.g., the estimated concentration of ozone in the air), and also shows what percentile each raw data value represents. These percentiles provide perspective on how the selected block group or buffer area compares to the entire state, EPA region, or nation. For example, if a given location is at the 95th percentile nationwide, this means that only 5 percent of the US population has a higher block group value than the average person in the location being analyzed. The years for which the data are available, and the methods used, vary across these indicators. Important caveats and uncertainties apply to this screening-level information, so it is essential to understand the limitations on appropriate interpretations and applications of these indicators. Please see EJSCREEN documentation for discussion of these issues before using reports.



Sites reporting to EPA

Superfund NPL	0
Hazardous Waste Treatment, Storage, and Disposal Facilities (TSDF)	0

Selected Variables	Value	State Average	Percentile in State	EPA Region Average	Percentile in EPA Region	USA Average	Percentile in USA
Environmental Indicators							
Particulate Matter (PM 2.5 in $\mu\text{g}/\text{m}^3$)	7.93	10.7	13	10.1	22	9.53	21
Ozone (ppb)	38.2	47.4	19	48.3	15	42.5	21
NATA* Diesel PM ($\mu\text{g}/\text{m}^3$)	1.21	0.972	69	0.978	60-70th	0.938	70-80th
NATA* Air Toxics Cancer Risk (risk per MM)	54	44	86	43	80-90th	40	90-95th
NATA* Respiratory Hazard Index	4.4	2.1	97	2	95-100th	1.8	95-100th
Traffic Proximity and Volume (daily traffic count/distance to road)	4200	1200	92	1100	92	600	97
Lead Paint Indicator (% pre-1960s housing)	0.43	0.29	68	0.24	73	0.29	71
Superfund Proximity (site count/km distance)	0.27	0.17	88	0.14	90	0.12	90
RMP Proximity (facility count/km distance)	0.71	1.1	56	0.97	61	0.72	68
Hazardous Waste Proximity (facility count/km distance)	5.1	3.3	77	2.8	82	4.3	90
Wastewater Discharge Indicator (toxicity-weighted concentration/m distance)	3.6E-05	16	64	12	65	30	53
Demographic Indicators							
Demographic Index	46%	48%	47	47%	49	36%	69
Minority Population	62%	62%	47	59%	51	38%	74
Low Income Population	29%	35%	46	35%	46	34%	48
Linguistically Isolated Population	9%	9%	58	8%	63	4%	82
Population with Less Than High School Education	16%	18%	55	17%	58	13%	70
Population under Age 5	6%	6%	45	6%	45	6%	49
Population over Age 64	9%	13%	35	13%	34	14%	26

*The National-Scale Air Toxics Assessment (NATA) is EPA's ongoing, comprehensive evaluation of air toxics in the United States. EPA developed the NATA to prioritize air toxics, emission sources, and locations of interest for further study. It is important to remember that NATA provides broad estimates of health risks over geographic areas of the country, not definitive risks to specific individuals or locations. More information on the NATA analysis can be found at: <https://www.epa.gov/national-air-toxics-assessment>.

For additional information, see: www.epa.gov/environmentaljustice

EJSCREEN is a screening tool for pre-decisional use only. It can help identify areas that may warrant additional consideration, analysis, or outreach. It does not provide a basis for decision-making, but it may help identify potential areas of EJ concern. Users should keep in mind that screening tools are subject to substantial uncertainty in their demographic and environmental data, particularly when looking at small geographic areas. Important caveats and uncertainties apply to this screening-level information, so it is essential to understand the limitations on

appropriate interpretations and applications of these indicators. Please see EJSCREEN documentation for discussion of these issues before using reports. This screening tool does not provide data on every environmental impact and demographic factor that may be relevant to a particular location. EJSCREEN outputs should be supplemented with additional information and local knowledge before taking any action to address potential EJ concerns.

Location: User-specified point center at 37.323468, -121.904386
 Ring (buffer): 1-mile radius
 Description:

Summary of ACS Estimates		2012 - 2016
Population		28,714
Population Density (per sq. mile)		9,159
Minority Population		17,733
% Minority		62%
Households		11,439
Housing Units		12,064
Housing Units Built Before 1950		3,938
Per Capita Income		47,004
Land Area (sq. miles) (Source: SF1)		3.13
% Land Area		100%
Water Area (sq. miles) (Source: SF1)		0.00
% Water Area		0%

	2012 - 2016 ACS Estimates	Percent	MOE (±)
Population by Race			
Total	28,714	100%	682
Population Reporting One Race	26,566	93%	1,764
White	15,122	53%	464
Black	1,027	4%	221
American Indian	235	1%	73
Asian	3,970	14%	340
Pacific Islander	162	1%	146
Some Other Race	6,051	21%	520
Population Reporting Two or More Races	2,148	7%	224
Total Hispanic Population	11,114	39%	633
Total Non-Hispanic Population	17,600		
White Alone	10,981	38%	372
Black Alone	998	3%	221
American Indian Alone	114	0%	72
Non-Hispanic Asian Alone	3,939	14%	340
Pacific Islander Alone	150	1%	146
Other Race Alone	93	0%	119
Two or More Races Alone	1,324	5%	195
Population by Sex			
Male	14,856	52%	422
Female	13,858	48%	416
Population by Age			
Age 0-4	1,645	6%	146
Age 0-17	5,725	20%	275
Age 18+	22,990	80%	491
Age 65+	2,487	9%	132

Data Note: Detail may not sum to totals due to rounding. Hispanic population can be of any race.
 N/A means not available. Source: U.S. Census Bureau, American Community Survey (ACS) 2012 - 2016.

Location: User-specified point center at 37.323468, -121.904386

Ring (buffer): 1-mile radius

Description:

	2012 - 2016 ACS Estimates	Percent	MOE (±)
Population 25+ by Educational Attainment			
Total	20,853	100%	431
Less than 9th Grade	1,522	7%	148
9th - 12th Grade, No Diploma	1,886	9%	150
High School Graduate	3,384	16%	176
Some College, No Degree	4,827	23%	191
Associate Degree	1,397	7%	112
Bachelor's Degree or more	9,234	44%	317
Population Age 5+ Years by Ability to Speak English			
Total	27,069	100%	620
Speak only English	15,808	58%	437
Non-English at Home ¹⁺²⁺³⁺⁴	11,261	42%	424
¹ Speak English "very well"	7,178	27%	376
² Speak English "well"	1,707	6%	129
³ Speak English "not well"	1,746	6%	167
⁴ Speak English "not at all"	630	2%	117
³⁺⁴ Speak English "less than well"	2,376	9%	196
²⁺³⁺⁴ Speak English "less than very well"	4,083	15%	215
Linguistically Isolated Households*			
Total	1,034	100%	118
Speak Spanish	594	57%	79
Speak Other Indo-European Languages	66	6%	28
Speak Asian-Pacific Island Languages	346	33%	87
Speak Other Languages	27	3%	28
Households by Household Income			
Household Income Base	11,439	100%	174
< \$15,000	1,029	9%	108
\$15,000 - \$25,000	836	7%	115
\$25,000 - \$50,000	1,582	14%	153
\$50,000 - \$75,000	1,820	16%	190
\$75,000 +	6,172	54%	232
Occupied Housing Units by Tenure			
Total	11,439	100%	174
Owner Occupied	4,670	41%	137
Renter Occupied	6,768	59%	177
Employed Population Age 16+ Years			
Total	23,576	100%	491
In Labor Force	17,724	75%	441
Civilian Unemployed in Labor Force	1,452	6%	188
Not In Labor Force	5,852	25%	297

Data Note: Detail may not sum to totals due to rounding. Hispanic population can be of any race.

N/A means not available. Source: U.S. Census Bureau, American Community Survey (ACS)

*Households in which no one 14 and over speaks English "very well" or speaks English only.

Location: User-specified point center at 37.323468, -121.904386

Ring (buffer): 1-mile radius

Description:

	2012 - 2016 ACS Estimates	Percent	MOE (±)
Population by Language Spoken at Home*			
Total (persons age 5 and above)	25,460	100%	503
English	14,873	58%	562
Spanish	6,747	26%	468
French	207	1%	258
French Creole	N/A	N/A	N/A
Italian	N/A	N/A	N/A
Portuguese	N/A	N/A	N/A
German	79	0%	34
Yiddish	N/A	N/A	N/A
Other West Germanic	N/A	N/A	N/A
Scandinavian	N/A	N/A	N/A
Greek	N/A	N/A	N/A
Russian	N/A	N/A	N/A
Polish	N/A	N/A	N/A
Serbo-Croatian	N/A	N/A	N/A
Other Slavic	N/A	N/A	N/A
Armenian	N/A	N/A	N/A
Persian	N/A	N/A	N/A
Gujarathi	N/A	N/A	N/A
Hindi	N/A	N/A	N/A
Urdu	N/A	N/A	N/A
Other Indic	N/A	N/A	N/A
Other Indo-European	868	3%	282
Chinese	600	2%	108
Japanese	N/A	N/A	N/A
Korean	329	1%	119
Mon-Khmer, Cambodian	N/A	N/A	N/A
Hmong	N/A	N/A	N/A
Thai	N/A	N/A	N/A
Laotian	N/A	N/A	N/A
Vietnamese	443	2%	221
Other Asian	581	2%	274
Tagalog	411	2%	177
Other Pacific Island	N/A	N/A	N/A
Navajo	N/A	N/A	N/A
Other Native American	N/A	N/A	N/A
Hungarian	N/A	N/A	N/A
Arabic	22	0%	30
Hebrew	N/A	N/A	N/A
African	N/A	N/A	N/A
Other and non-specified	170	1%	117
Total Non-English	10,587	42%	754

Data Note: Detail may not sum to totals due to rounding. Hispanic population can be of any race.
 N/A means not available. Source: U.S. Census Bureau, American Community Survey (ACS) 2012 - 2016.
 *Population by Language Spoken at Home is available at the census tract summary level and up.