

City Energy Project – San José

Benchmarking and Transparency Policy Package

Meeting 3: Reporting and Transparency
April 19, 2018



Environmental Services



Delivering world class utility services and programs to improve our health, environment, and economy.



Welcome



Environmental Services

Delivering world class utility services and programs to improve our health, environment, and economy.

Benchmarking & Climate Smart San José

Pillar 1

A Sustainable & Climate Smart City

1.1

Transition to a renewable energy future

1.2

Embrace our Californian climate

Pillar 2

A Vibrant City of Connected & Focused Growth

2.1

Densify our city to accommodate our future neighbors

2.2

Make homes efficient and affordable for our families

2.3

Create clean, personalized mobility choices

2.4

Develop integrated, accessible public transport infrastructure

Pillar 3

An Economically Inclusive City of Opportunity

3.1

Create local jobs in our city to reduce vehicle miles traveled

3.2

Improve our commercial building stock

3.3


Make commercial goods movement clean and efficient



Delivering world class utility services and programs to improve our health, environment, and economy.



Energy Star Certified Ranking



2018 ENERGY STAR TOP CITIES

Delivering world class utility services and programs to improve our health, environment, and economy.



Previous Meetings

Meeting 1 - Kick Off

- Building benchmarking overview
- Initial characterization of San José building stock
- Timeline and scope of policy task force

Meeting 2

- In-depth analysis of building stock coverage and thresholds
- Introduction to EPA ENERGYSTAR Portfolio Manager

Discussion Topics To Date

- Transparency messaging/communication
- Education and resources to assist buildings
- Efficient energy/building management systems
- Water management
- Implementation and enforcement
- Financing
- Fostering innovation



Delivering world class utility services and programs to improve our health, environment, and economy.

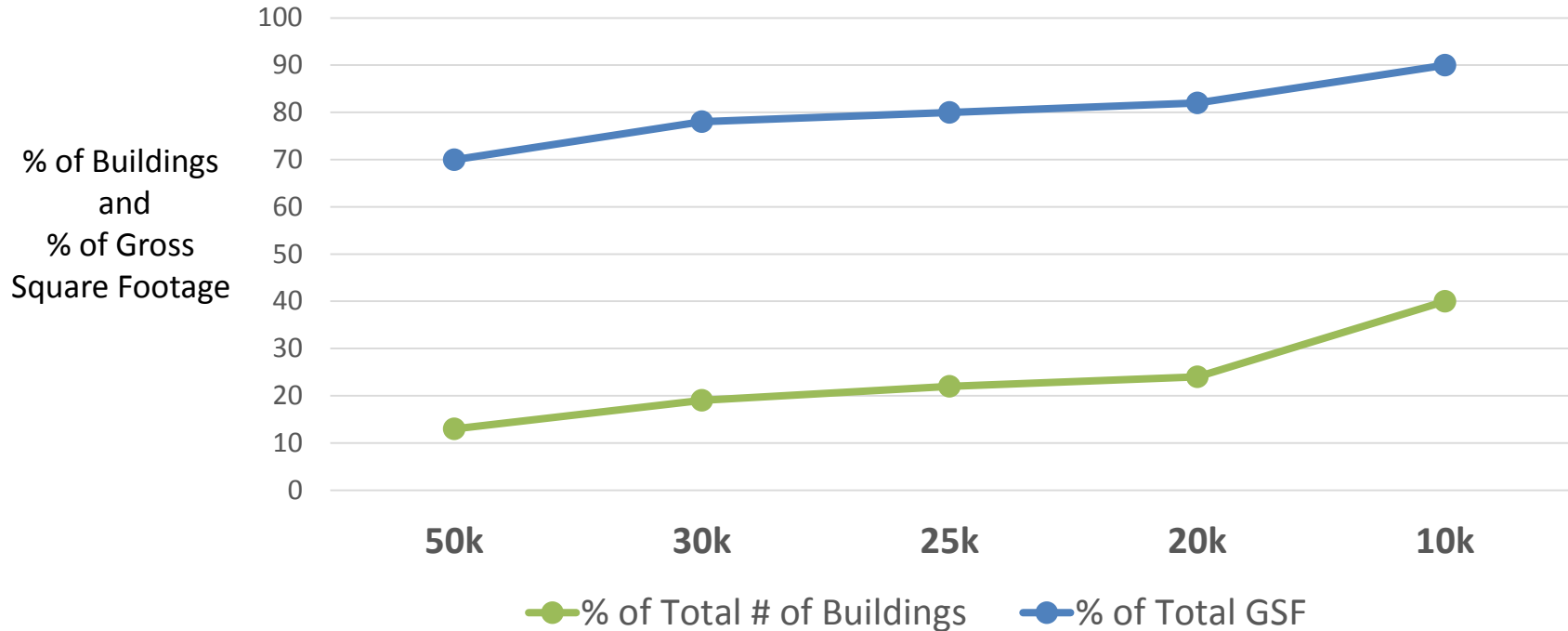
Building Stock Summary Analysis

THRESHOLD	# OF BUILDINGS	% OF BUILDINGS	% OF GSF
50,000	1558	13%	70%
30,000	2280	19%	78%
25,000	2607	22%	80%
20,000	2930	24%	82%
10,000	4766	40%	90%

Delivering world class utility services and programs to improve our health, environment, and economy.

Building Stock Summary Analysis

Benchmarking Thresholds and Building Stock Coverage



Delivering world class utility services and programs to improve our health, environment, and economy.

Benefits of Reporting and Transparency

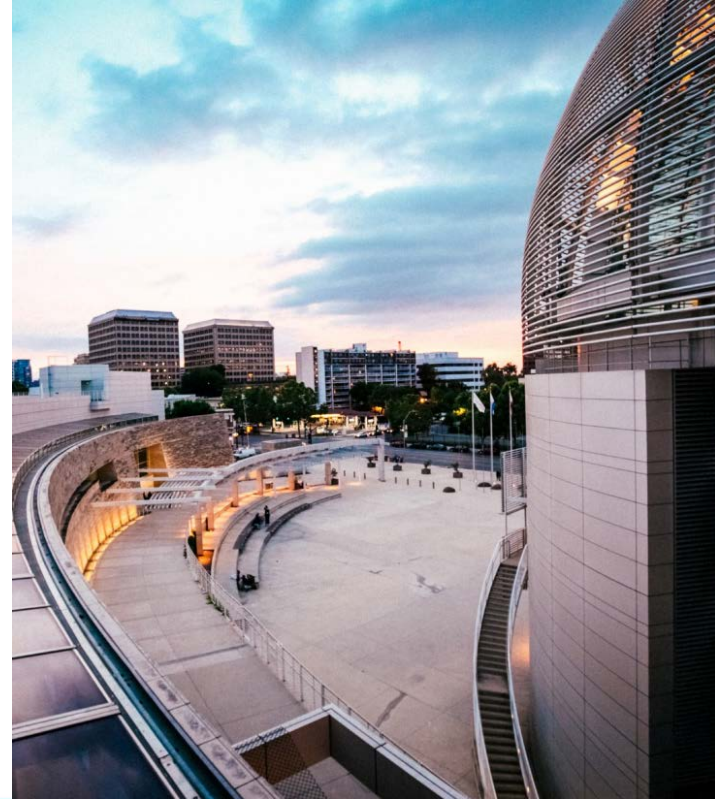
- Understand performance and opportunities for savings
- Improve public and private programs
- Catalyze or encourage market transformation
- ‘Green Premium’ or added value for high performers
- Inform sustainability goals and progress



Delivering world class utility services and programs to improve our health, environment, and economy.

Benefits of Local Policy

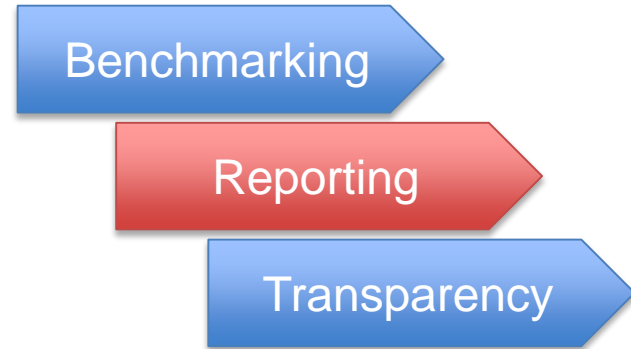
- Custom reporting, compliance and implementation process
- Additional support services and project assistance
- Local access to more robust data
- Recognition



Delivering world class utility services and programs to improve our health, environment, and economy.

Reporting Process

- Compliance pathways through local policy vs. state mandate
- Determine what data is collected through Portfolio Manager, what will be submitted/reported for compliance, and what will be made public
- City to create a 'Master' Portfolio Manager account and custom reporting template



Guide to Custom Reporting in Portfolio Manager



Create a Custom Report

1. Create a report template.
2. Use the template you created to:
 - Generate a custom report.
 - Share your template.
 - Request data from others.

Levels of Transparency

- AB 802 requirements
- Reported data vs. public data
- Open data table vs. other formats

Benchmarking

Reporting

Transparency



Delivering world class utility services and programs to improve our health, environment, and economy.



AB 802 Required Reporting

For a Disclosable Building, the Energy Commission will collect, and may make available on a public website the following information:

- A. ENERGY STAR Portfolio Manager Property ID
- B. Percentage of space occupied
- C. Number of occupants
- D. Number of buildings (if served by one common energy meter, without submetering)
- E. ENERGY STAR Score, for eligible buildings
- F. Monthly and/or annual site energy use by energy type
- G. Monthly and/or annual weather-normalized site and/or source energy use intensity
- H. Monthly and/or annual peak electricity demand
- I. Total greenhouse gas emissions



Reported Fields

- Fundamental property characteristics
- Energy Metrics
 - Energy Star Score
 - Site EUI
 - Many also report Source EUI
- Total GHG emissions

What Do Other Cities Publish?

Building Identification

Local Building ID/Portfolio Manager ID
Parcel Number/Tax Parcel/Tax ID/BBL ID
Property or Building Name
Parent Property Name
Owner
Address
Postal Code
Community/Neighborhood/Ward/Borough
Location (Latitude, Longitude)
Compliance Status

Property Characteristics

Property Floor Area (buildings) (ft ²)
Property Floor Area (buildings and parking) (ft ²)
Number of Buildings
Primary Property Type
Property Uses
Year Built

Energy Metrics

Energy Star Score
Energy Star Certified
Source EUI (kBtu/ft ²)
Weather Normalized Source EUI (kBtu/ft ²)
Site EUI (kBtu/ft ²)
Weather Normalized Site EUI (kBtu/ft ²)
Electricity Use - Grid Purchase and Generated Onsite (kWh)
Electricity Use - Grid Purchase and Generated Onsite (kBtu)
Natural Gas Use (therms)
Natural Gas Use (kBtu)
District Steam Use (kBtu)
Fuel Oil #2 Use (kBtu)
Other Fuel Use
Onsite Solar (kWh)
Total Site Energy (kBtu)
Total Site Energy - % Electricity
Total Site Energy - % Gas
Total Site Energy - % Steam
Percent Better than National Median Site EUI
Percent Better than National Median Source EUI

GHG Metrics

Total GHG Emissions (Metric Tons CO ₂)
Total GHG Emissions Intensity (kgCO ₂ e/ft ²)
Direct GHG Emissions (MtCO ₂ e)
Indirect GHG Emissions (MtCO ₂ e)

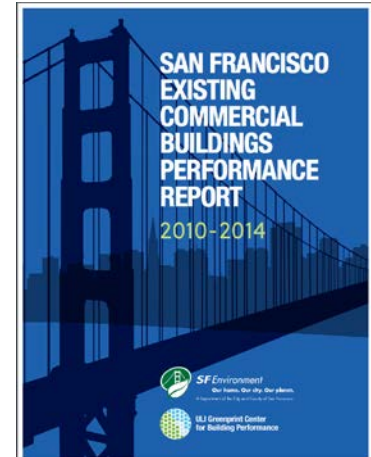
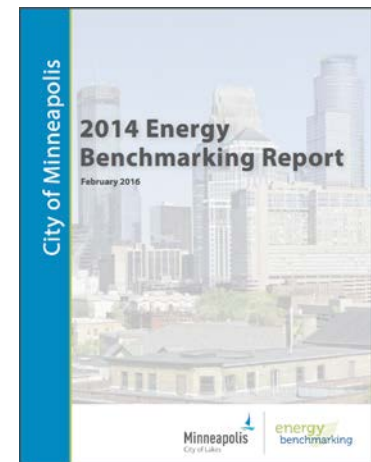
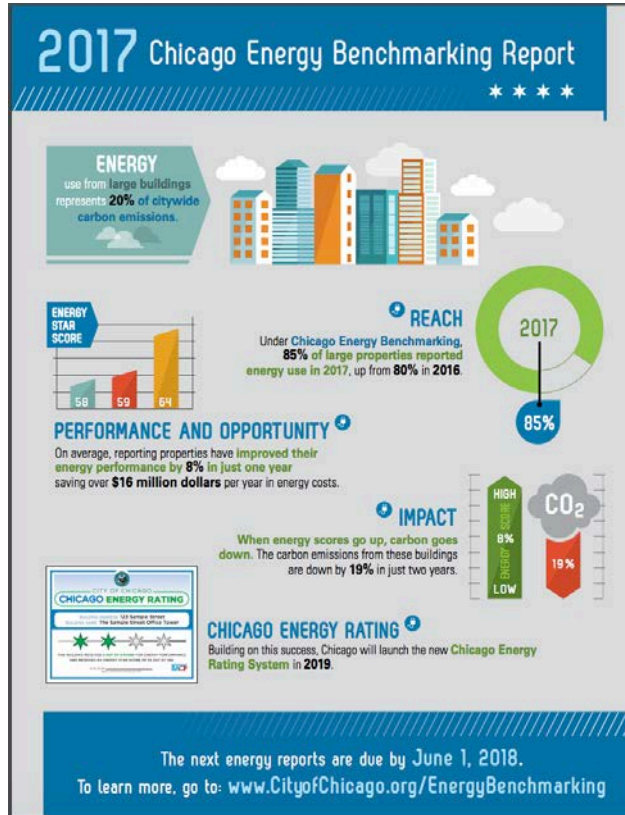
Water Metrics

Water Use (kgal)
Municipally Supplied Potable Water, Indoor Intensity (gal/ft ²)
Water Intensity (gal/ft ²)
District Chilled Water Use (kBtu)

Delivering world class utility services and programs to improve our health, environment, and economy.

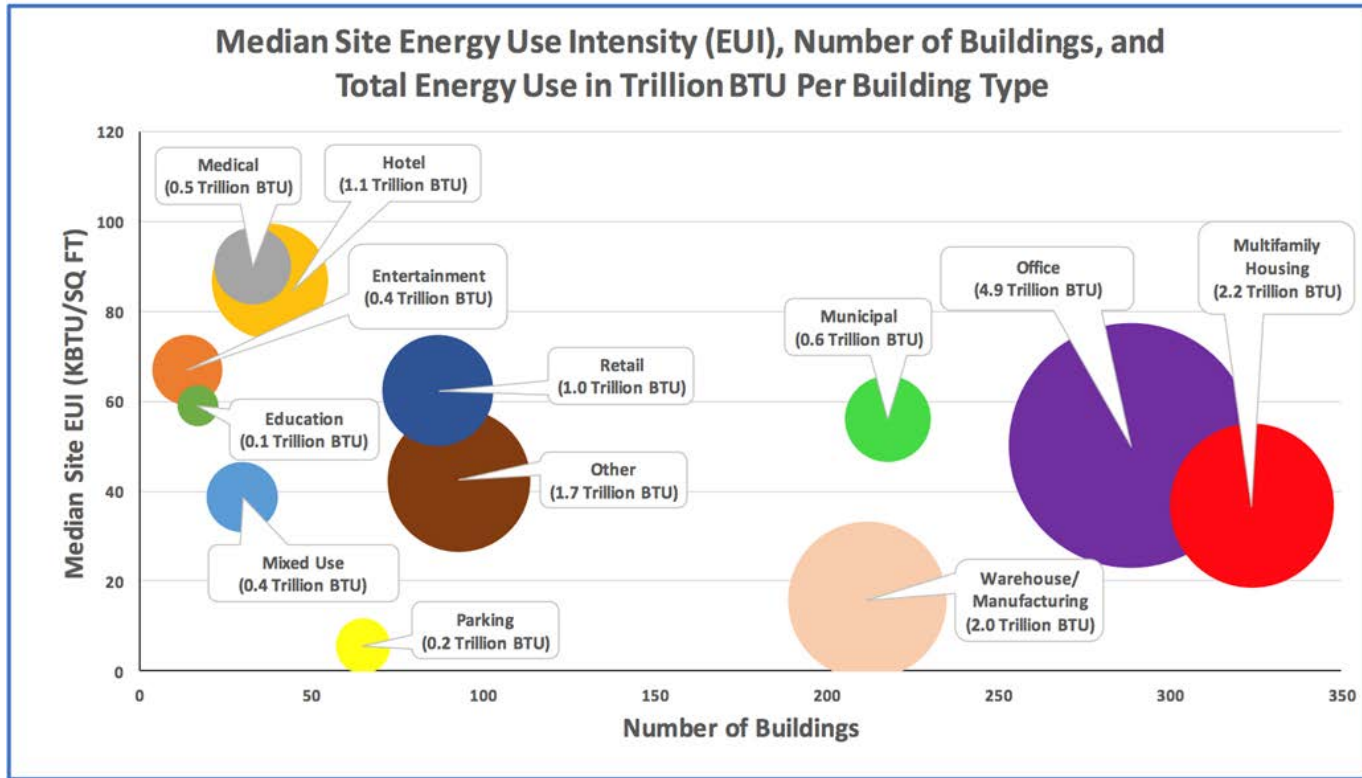
Reporting Formats

- Open data tables
- Interactive maps
- Summary reports
- Score cards



Delivering world class utility services and programs to improve our health, environment, and economy.

Summary Report Example: Los Angeles



Delivering world class utility services and programs to improve our health, environment, and economy.



Task Force Timeline and Next Steps

Meeting 4: Compliance Pathways

May 16 , 2018

Meeting 5: Implementation and Enforcement

June 14 , 2018

Meeting 6: Review draft ordinance

July 18, 2018



Discussion

- Questions about the material covered or information presented?
- What should be collected vs. reported vs. disclosed?
- What methods of displaying energy and water use are most helpful or effective?
- How can the City support the reporting process?
- Do any working groups need to be designated for implementation?