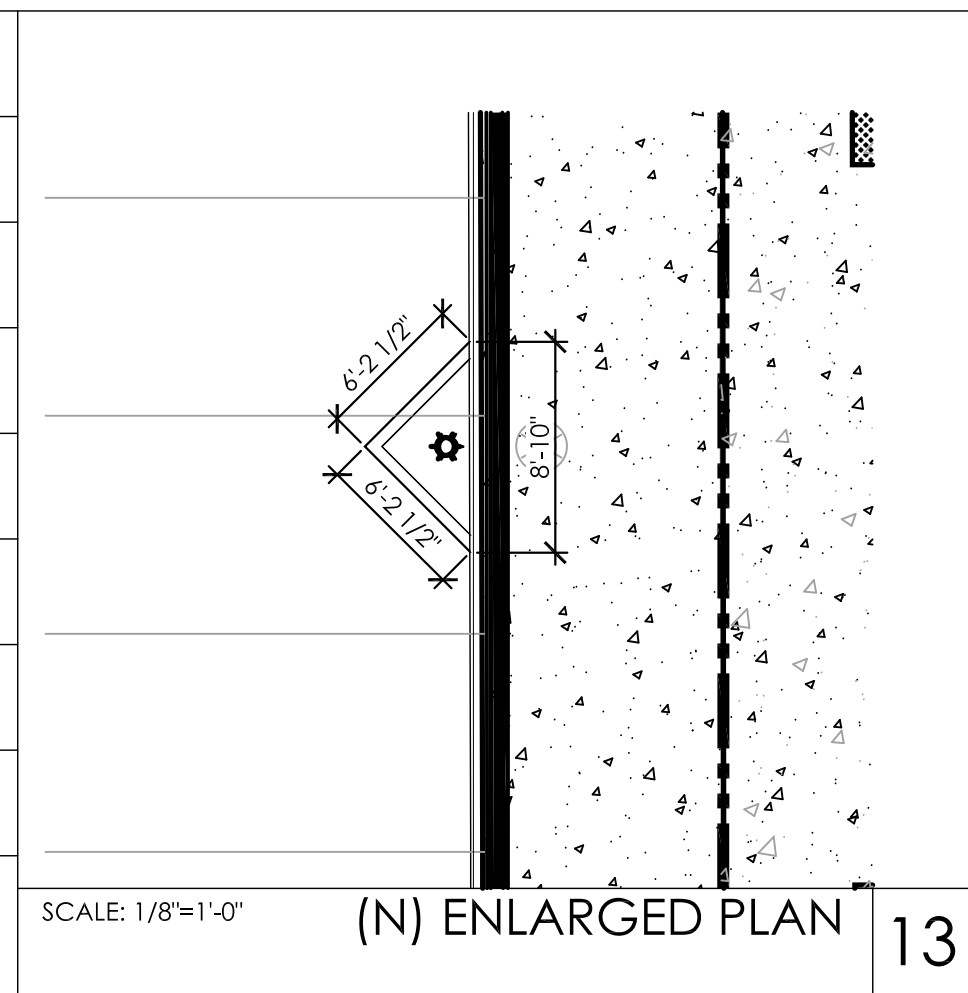
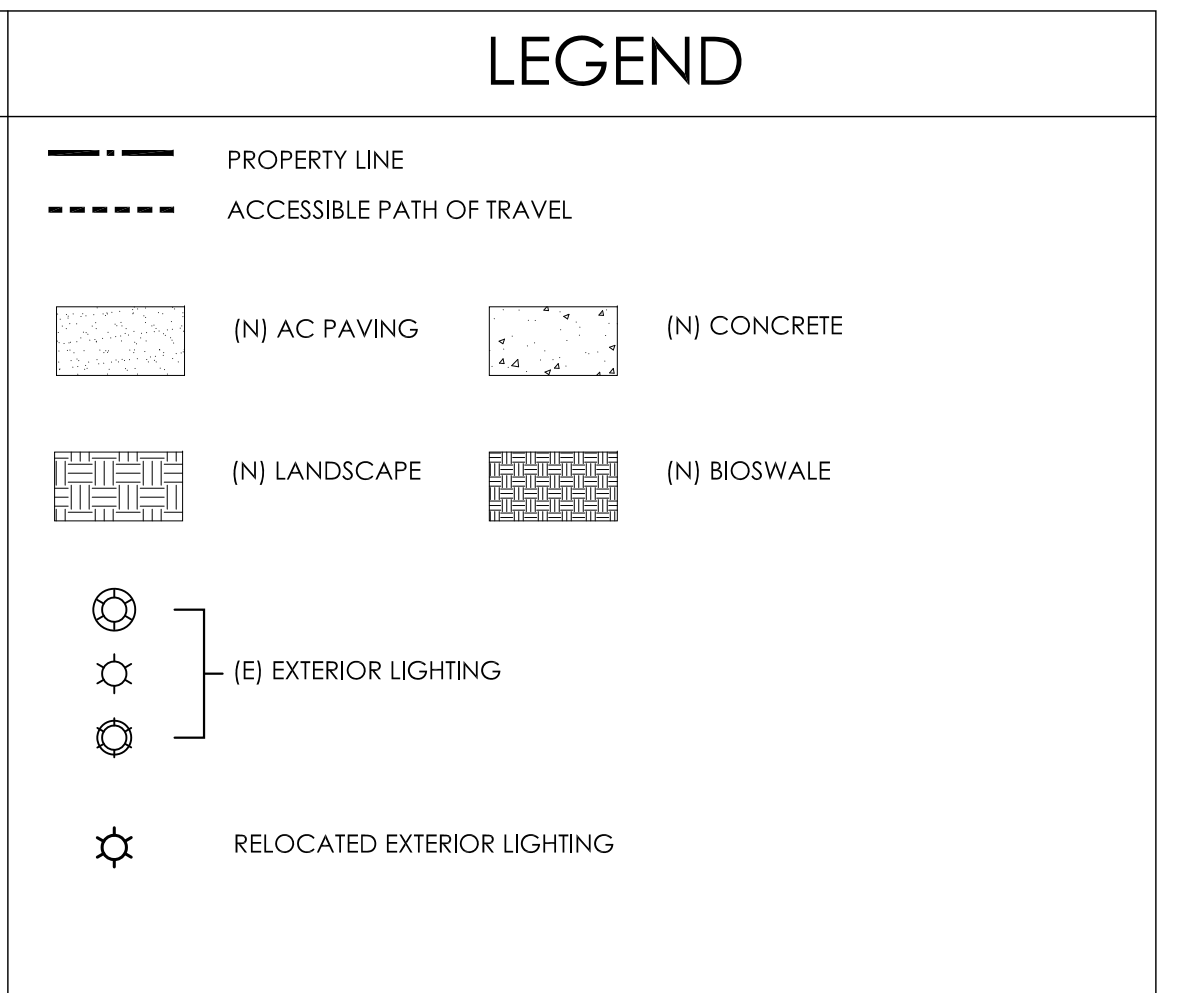


BUILDING INFORMATION		
BUILDINGS	AREA	USE
(E)BUILDING - 1	15,800 SF	SERVICE
(E)BUILDING - 2	13,078 SF	OFFICE / SALES, SERVICE BAYS
(E)BUILDING - 3	5,307 SF	SHOWROOM
(N) BUILDING - 4	22,493 SF	OFFICE / SALES AND ENCLOSED SHOWROOM
GROSS FLOOR AREA	56,678 SF	
NET LOT AREA	230,992 SF	
$FAR = \frac{GROSS\ FLOOR\ AREA}{NET\ LOT\ AREA} = \frac{56,678}{230,992} = 0.245$		



- ### GENERAL NOTES
1. WALKS AND SIDEWALKS SHALL BE CONTINUOUS COMMON SURFACE, NOT INTERRUPTED BY STEPS OR BY ABRUPT CHANGES IN LEVEL EXCEEDING 1/2 INCH, AND SHALL BE A MINIMUM OF 48 INCHES IN WIDTH.
 2. SURFACE CROSS SLOPES SHALL NOT EXCEED 1/4 INCH PER FOOT.
 3. WHEN THE SLOPE IN THE DIRECTION OF TRAVEL OF ANY WALK EXCEEDS 1:20 IT SHALL COMPLY WITH THE PROVISIONS FOR PEDESTRIANS RAMP.
 4. ABRUPT CHANGES IN LEVEL ALONG ANY ACCESSIBLE ROUTE SHALL NOT EXCEED 1/2 INCH. WHEN CHANGES IN LEVEL DO OCCUR, THEY SHALL BE BEVELED WITH A SLOPE NO GREATER THEN 1:2 EXCEPT THAT LEVEL CHANGES NOT EXCEEDING 1/2 INCH NOT BE VERTICAL. WHEN CHANGES IN LEVELS GREATER THAN 1/2 INCH ARE NECESSARY THEY SHALL COMPLY WITH THE REQUIREMENTS FOR RAMPS.
 5. SURFACE SLOPES OF ACCESSIBLE PARKING SPACES SHALL NOT EXCEED 1/4 INCH PER FOOT IN ANY DIRECTION.
 6. ALL DAMAGED OR DETERIORATE FIRE LANE MARKING SHALL BE RE-STRIPED
 7. ALL CURBS WHICH OUTLINE THE FIRE LANE SHALL BE PAINTED RED WITH WHITE LETTERING READING "NO PARKING - FIRE LANE". THE TEXT SHALL BE FOUR INCHES TALL AND SHALL BE PLACED EVERY 30 FEET OR PORTION THEREOF, ON TOP OF DESIGNATED CURBING.
 8. ACCESSIBLE ROUTE SHALL HAVE A MAXIMUM RUNNING SLOPE OF 1:20 AND A MAXIMUM CROSS-SLOPE OF 1:48.
 9. WALKS AND SIDEWALKS SHALL BE AT LEAST 48" WIDE PER CBC 11B-403

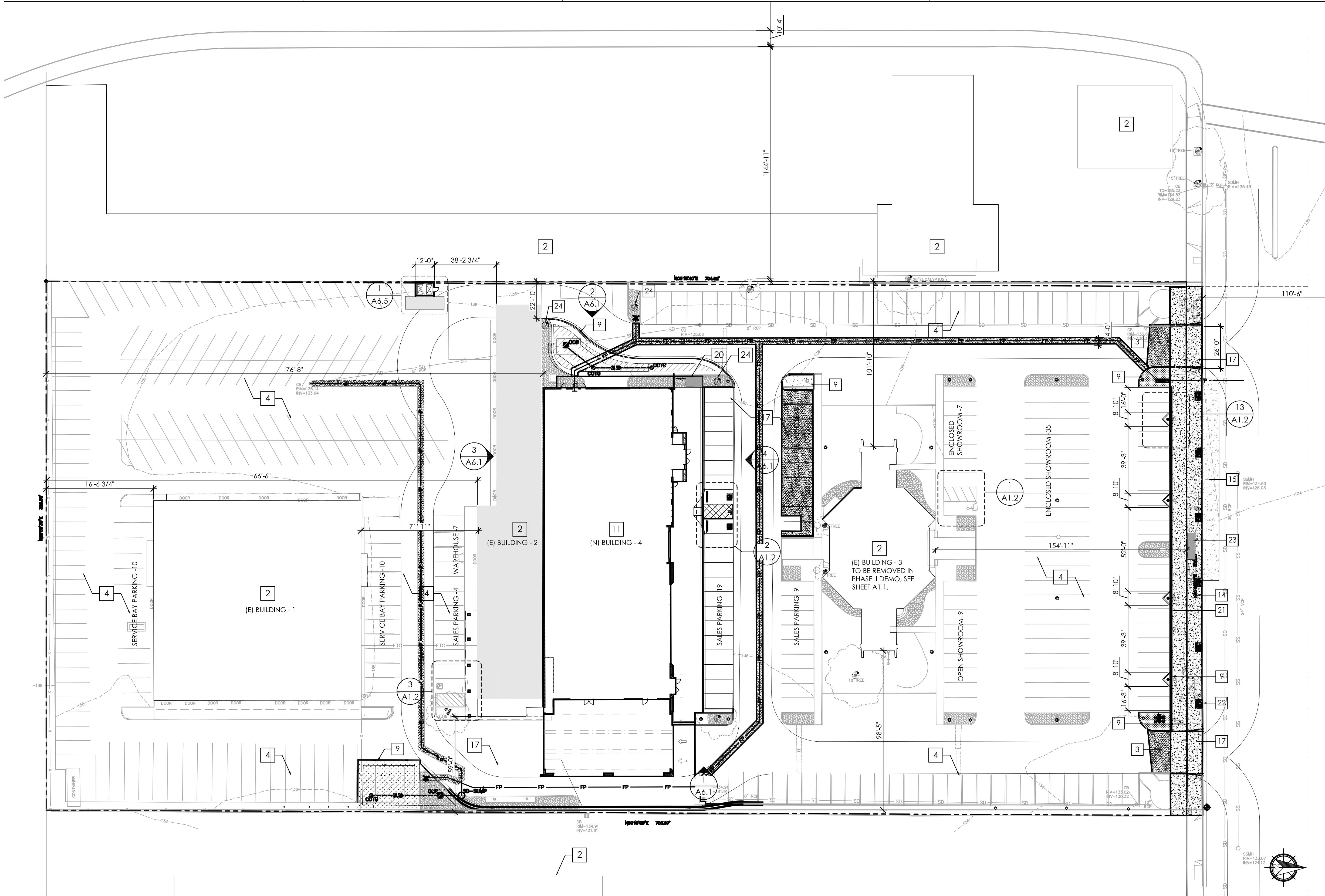
- ### KEY NOTES
- | | |
|---|--|
| 1 (E) ACCESSIBLE PATH OF TRAVEL | 13 (N) STRIPING |
| 2 (E) BUILDING | 14 10'-0" SIDEWALK TO REMAIN |
| 3 (N) DRIVEWAY ENTRY | 15 (N) CONCRETE PAD |
| 4 (E) PARKING STALLS | 16 (N) CURB CUT |
| 5 (E) ACCESSIBLE PARKING STALLS, SEE DETAIL 3/A0.2 | 17 REPLACE (E) ASPHALT W/ (N) ASPHALT CONCRETE |
| 6 ACCESSIBLE PARKING SIGN, SEE DETAIL 2/A0.2 | 18 RELOCATE PRIVATE STREET LIGHT OUT OF PROPOSED 20'-0" SIDEWALK |
| 7 (E) SITE ACCESSIBLE TOW-AWAY SIGN, SEE DETAIL 1/A0.2 | 19 (N) CURB RAMP, SEE DETAIL 8/A0.2 FOR ADDITIONAL INFORMATION |
| 8 (E) ACCESSIBLE RAMP WITH HANDRAILS, REFER DETAIL 9/A0.2 | 20 (N) 5 STALL BICYCLE RACK |
| 9 (N) LANDSCAPING | 21 (N) 2'-0" RETAINING WALL |
| 10 WHEELSTOP | 22 (N) TREE PLANTER BOXES, REFER TO LANDSCAPE DRAWINGS |
| 11 (N) BUILDING | 23 BUS STOP |
| 12 (N) ACCESSIBLE PARKING STALLS | 24 (N) 15" CIRCUMFERENCE PALM TREE |



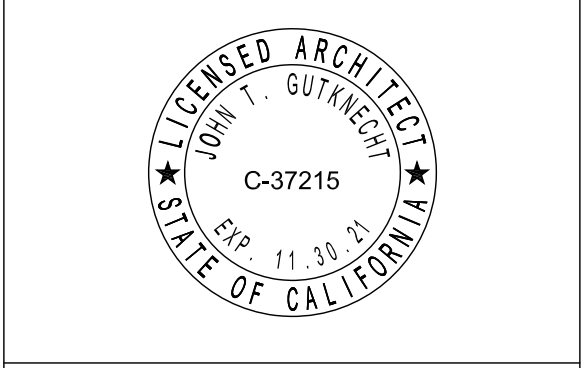
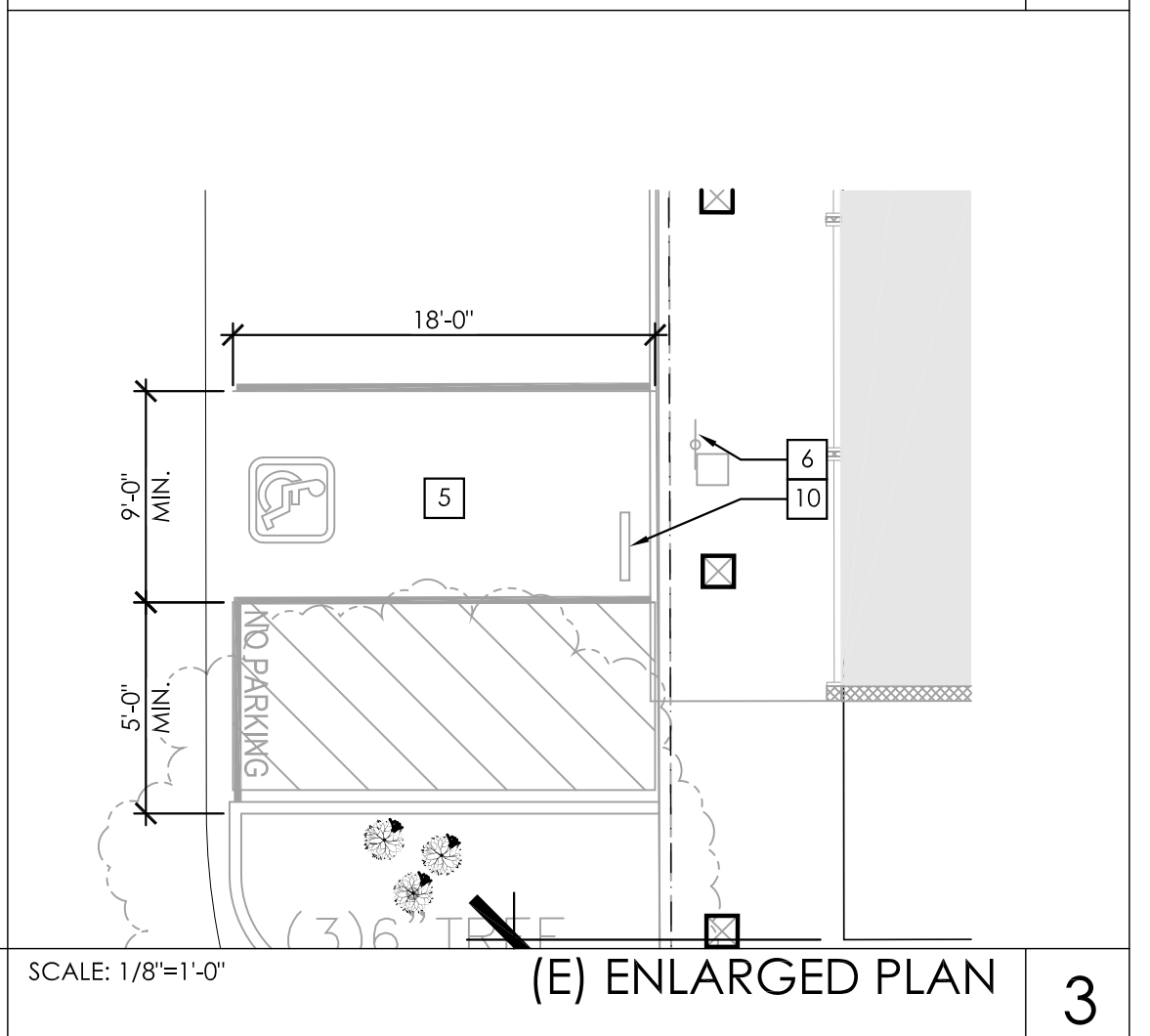
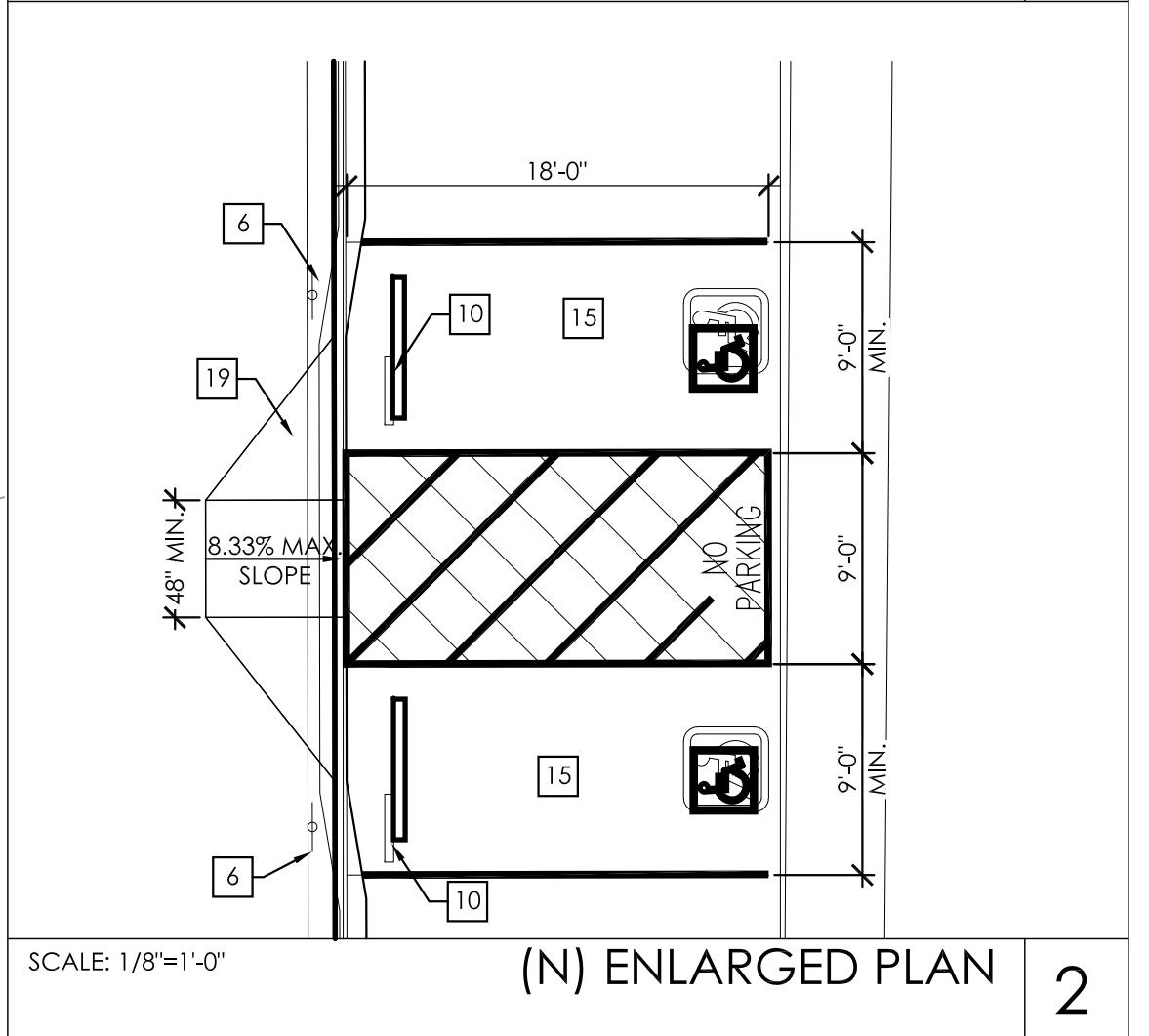
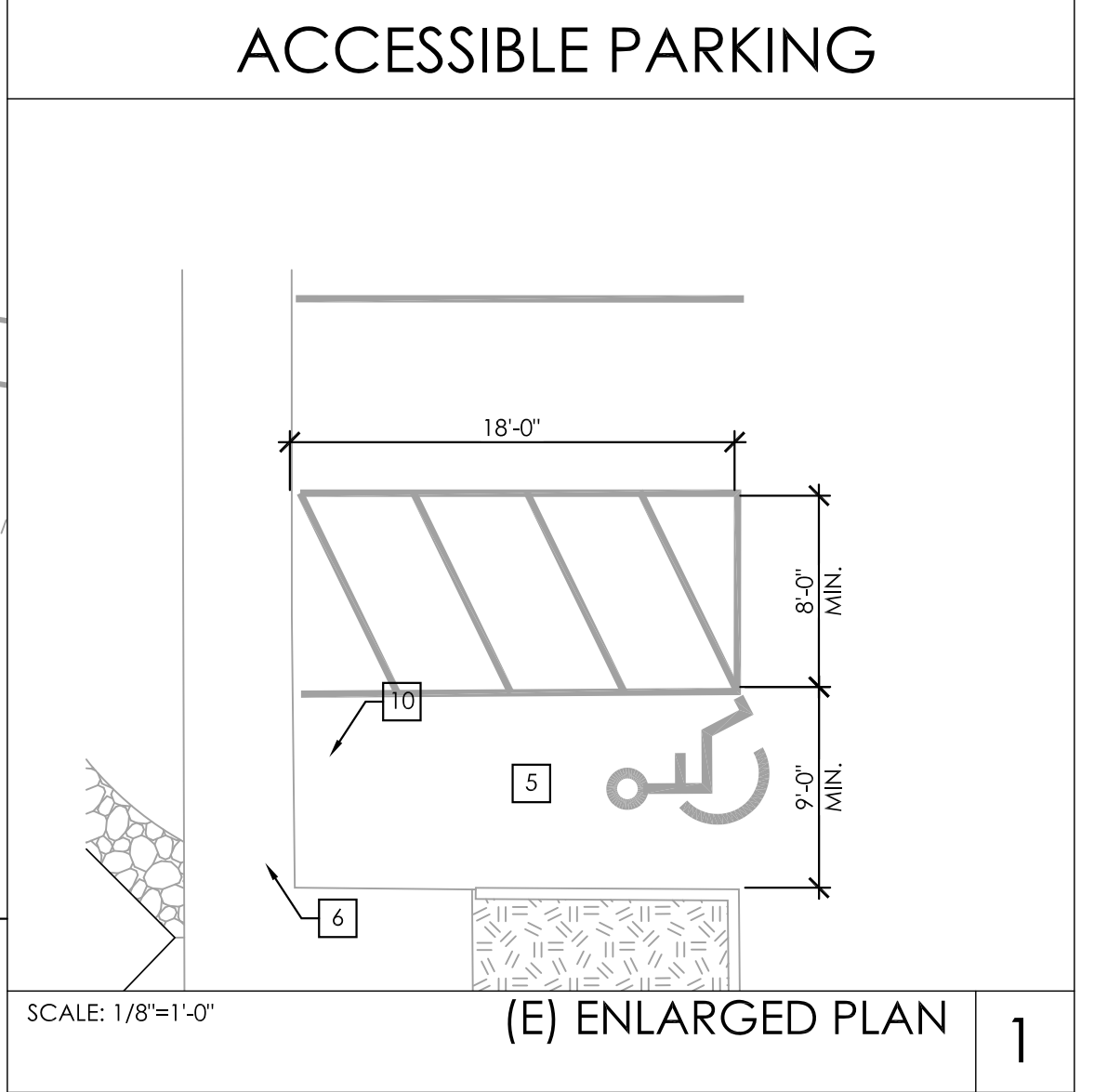
architecture and interior design
2290 North First Street #304, San Jose, CA 95131
P 408.977.0606 • F 408.298.4245
www.habitec.com

This drawing is an instrument of service only, and is, and shall remain, the property of Habitec. No reproduction or other use shall be made by any person or firm without written permission of Habitec. Unauthorized use shall void the professional seal and signature hereon and no professional responsibility will remain.

Written dimensions on this drawing shall have precedence over any scaled dimension. Do not scale this drawing for accurate dimensions, and notify Habitec of any discrepancies.



ACCESSIBLE PARKING



STEVENS CREEK CDR+J

TENANT IMPROVEMENT
4100 STEVENS CREEK BLVD.
SAN JOSE, CA 95129

ISSUE

NO.	DATE	TEXT
	12.19.19	PLANNING SUBMITTAL
	03.30.20	PLANNING SUBMITTAL
	06.30.20	PLANNING SUBMITTAL
2	08.14.20	PLANNING RESUBMITTAL
	08.31.20	PLANNING RESUBMITTAL

NEW SITE PLAN

Date	04.12.2019
Scale	AS NOTED
Drawn	
Job	16006-2
Sheet	

A1.2