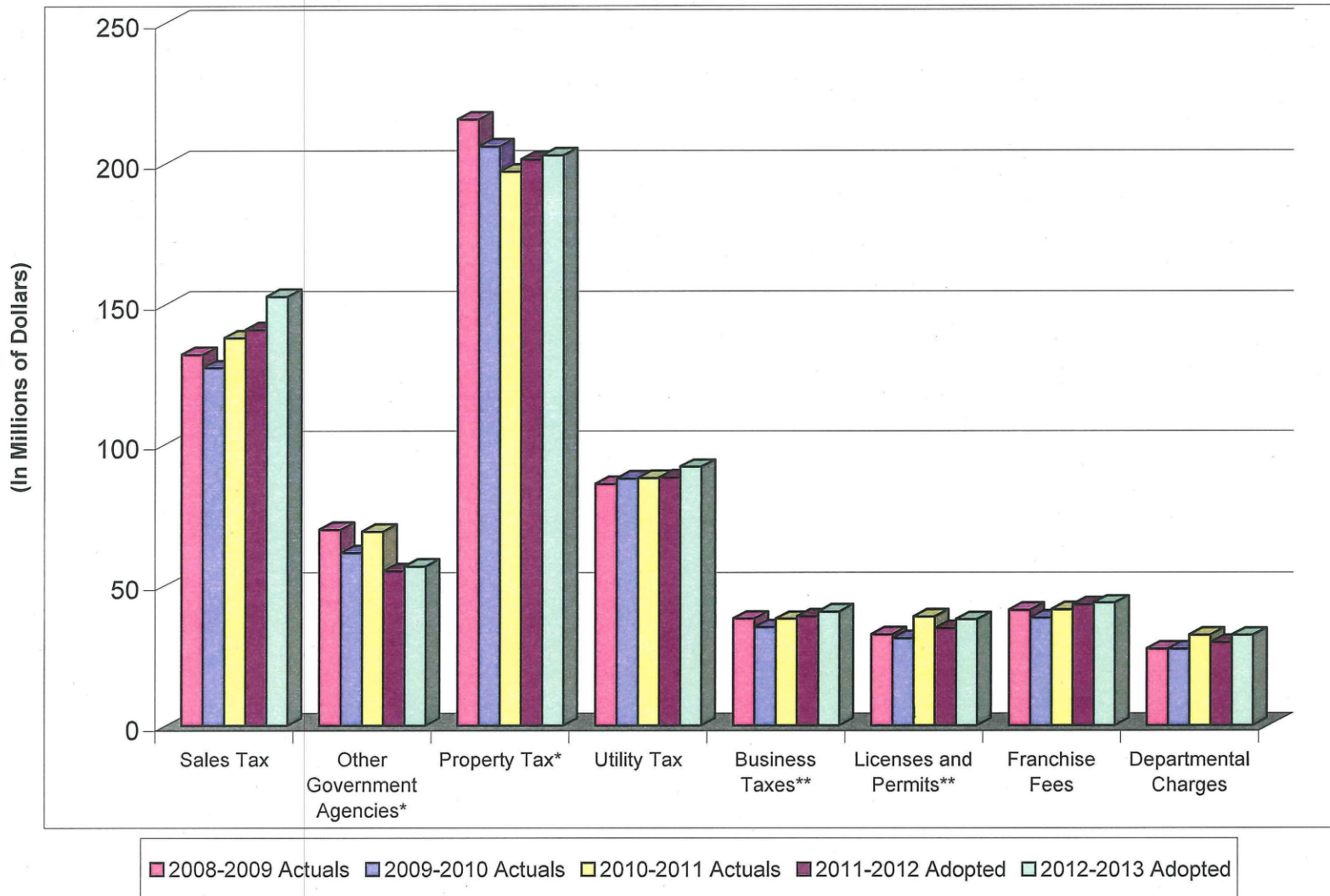


**CITY OF SAN JOSE
2012-2013 ADOPTED OPERATING BUDGET**

FIVE-YEAR COMPARISON OF KEY GENERAL FUND SOURCES



IV - 3

* The Property Tax and Revenue from State Government revenues have been restated to reflect the recategorization of Aircraft Property Tax into the Property Tax category.

** The Business Taxes and Licenses and Permits revenues have been restated to reflect the recategorization of Business Tax, Cardroom Business Tax, and Disposal Facility Tax into the Business Taxes category.