



Memorandum

TO: HONORABLE MAYOR AND
CITY COUNCIL

FROM: Angel Rios, Jr.

SUBJECT: PRNS Organizational Chart

DATE: May 22, 2015

Approved

Date

5-22-15

In response to Councilmember Khamis' request during the Neighborhood Services City Service Area Operating Budget Study Session on May 7, 2015, attached is the Parks, Recreation and Neighborhood Services Department organizational chart.

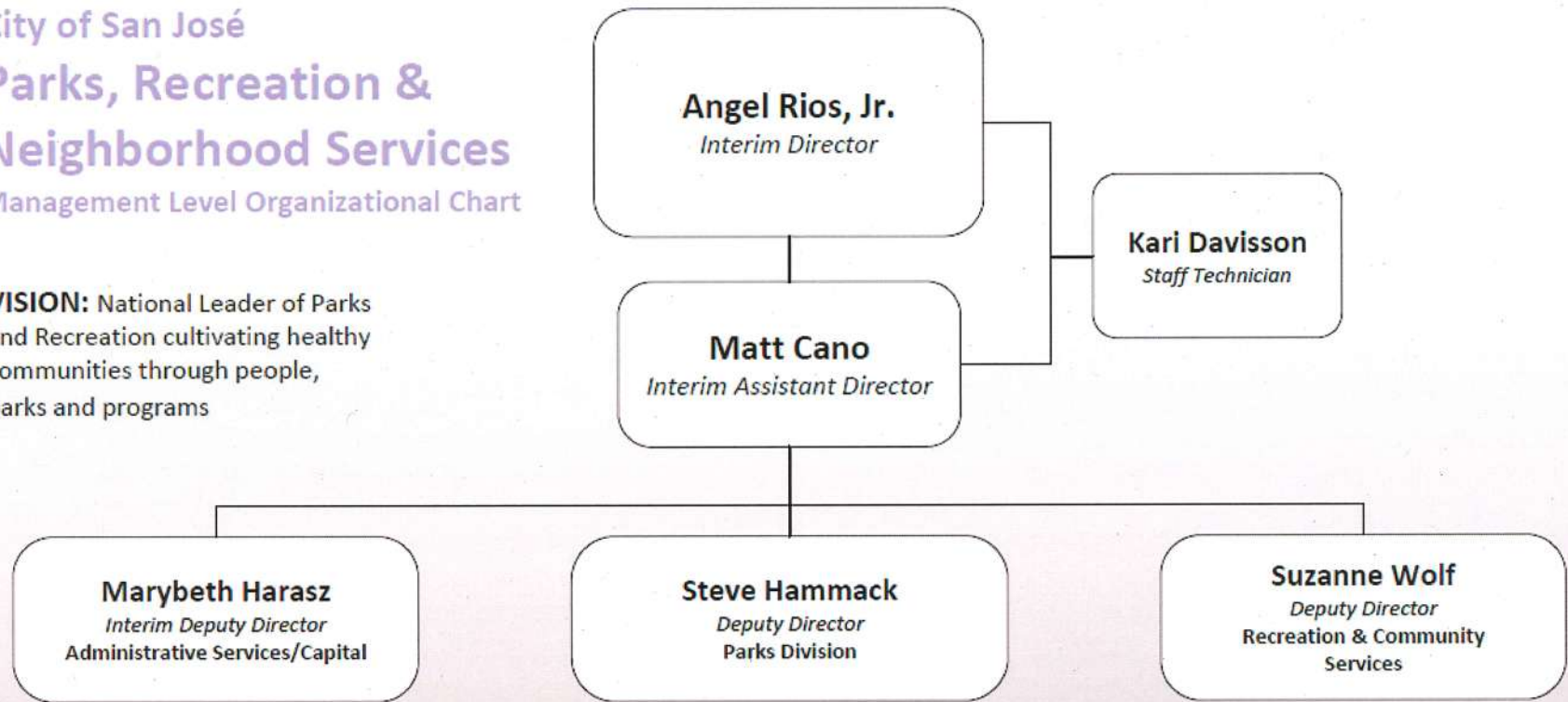
/s/

ANGEL RIOS, JR.
Interim Director
Parks, Recreation and
Neighborhood Services

Attachment

City of San José
**Parks, Recreation &
Neighborhood Services**
Management Level Organizational Chart

VISION: National Leader of Parks and Recreation cultivating healthy communities through people, parks and programs

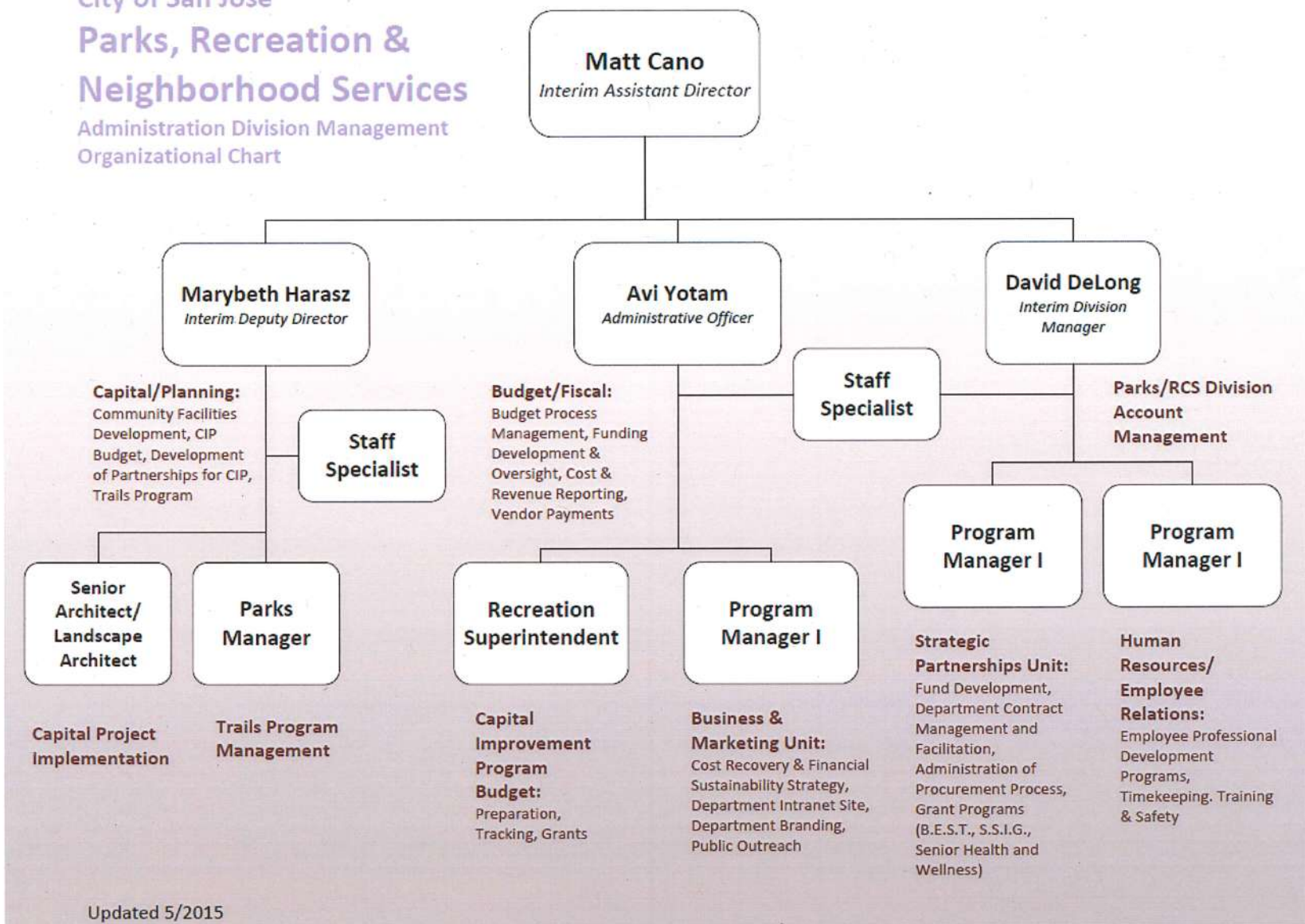


OBJECTIVE: Oversight and implementation of Department's Capital Improvement & Planning Program as well as all PRNS administrative functions; human resources, employee development, contracts, grants, partnerships, fund development, pricing, marketing, and operating budget oversight & development.

OBJECTIVE: Manage and operate a wide variety of facilities, programs, and services including neighborhood and regional parks, golf courses, Happy Hollow Park & Zoo, special events, sports field reservations, and park ranger services. Activities include maintaining, renovating, and preserving parks and open space for residents to play, learn, and enjoy outdoor recreation activity.

OBJECTIVE: Improve community image and livability by providing quality recreation facilities & programs, and providing nationally-recognized programs to meet the community's growing needs.

City of San José
**Parks, Recreation &
 Neighborhood Services**
 Administration Division Management
 Organizational Chart



Updated 5/2015

City of San José
**Parks, Recreation &
 Neighborhood Services**

Parks Division Management
 Organizational Chart

Steve Hammack
Deputy Director

Staff Specialist



City of San José
**Parks, Recreation &
 Neighborhood Services**

Recreation & Community Services Division
 Management Organizational Chart

Suzanne Wolf
Deputy Director

Secretary

Andrew Freeman
Division Manager

Mario Maciel
Division Manager

**Recreation and Community
 Services Unit**

**Neighborhood
 Empowerment Unit**

**Recreation
 Superintendent**

**Recreation
 Superintendent**

**Therapeutic
 Services
 Manager**

**Community
 Services
 Supervisor**

**Community
 Services
 Supervisor**

**Community Centers
 and Programs
 Region 1 (CD 3, 4, 5,
 7, 8):**
 Roosevelt, Berryessa,
 Mayfair, Seven Trees,
 Evergreen

**Community Centers
 and Programs
 Region 2 (CD 1, 2, 6,
 9, 10):**
 Cypress, Bascom,
 Southside, Willow Glen,
 Camden, Almaden

Therapeutics:
 Therapeutic Services
 at Community
 Centers, Grace
 Community Center

**Anti-Graffiti, Anti-
 Litter**

**Mayor's Gang
 Prevention Task
 Force**

After School & Summer
 Camp Programs, Youth
 Commission

Senior Nutrition, Senior
 Health & Wellness, Senior
 Transportation, Senior
 Citizens Commission

**Recreation
 Supervisor**

**Recreation
 Supervisor**

**Community Center
 Reuse Program:**
 14 Satellite Community
 Centers, 28 Neighborhood
 Community Centers, Reuse
 Facility Maintenance and
 Rentals

Aquatics:
 Alviso, Biebrach, Camden,
 Fair Swim Center, Mayfair,
 Rotary Ryland

**Safe Schools Campus
 Initiative :**
 Foothill, Southern,
 Western, Middle Schools

Updated 5/2015