

FIXTURE SCHEDULE

10/12/2021 WAT KHMER KAMPUCHEA KROM		SPECIAL USE PERMIT LIGHTING SPREAD SHEET										
TYPE	IMAGE	MANUFACTURER	PRODUCT NAME	MOUNTING	SIZE	LAMP	WATTS	KELVIN	CRI	LUMENS	F=FULLY SHIELDING P=PARTIAL SHIELDING	B-U-G RATING OR DA=DOWNWARD AIMING
E1		BEGA	24 372 WALL LUMIERE	WALL MOUNT SCONCE	7 7/8" x 4 3/8" x 3 3/8"	LED	6.1	2700K	90	459	F	B0-U0-G0
E3		BK LIGHTING	MICRO NITE STAR MEDIUM FLOOD	CEILING MOUNT MONOPONT	1.625" DIA. x 4.5" L	LED	6.5	2700K	90+	375	P	DA
E4		BK LIGHTING	MICRO NITE STAR SPOT	ROOF MOUNT MONOPONT	1.625" DIA. x 4.5" L	LED	6.5	2700K	90+	480	P	DA
E5		BK LIGHTING	MICRO NITE STAR MEDIUM FLOOD W/ RECTILINEAR LENS	BEAM MOUNT MONOPONT	1.625" DIA. x 4.5" L	LED	6.5	2700K	90+	375	P	DA
E7		MP LIGHTING	L07	RECESSED	0.75" DIA. x 1.5" H	LED	0.2	2700K	90+	2.7	P	B0-U0-G0
E8		MP LIGHTING	L01	SMALL COLUMN DOWNLIGHT	2.5" DIA. x 2.25" H	LED	2.6	2700K	90+	75	P	B0-U1-G0
E9		AION LED	3924-26 / 27-WR	LINEAR LED STRIP ROOF ACCENT	0.72" x 0.80" INCL CLIP	LED	1.4W/FT	2550K	96	116/ft	F	DA
E10		BEGA	24 372 WALL LUMIERE	WALL MOUNT SCONCE	7 7/8" x 4 3/8" x 3 3/8"	LED	6.1	2700K	90	459	F	B0-U0-G0
L3		BK LIGHTING	MINI MICRO SPOT	SCULPTURE ACCENT	1.625" DIA. x 4.5" L	LED	2.5	2700K	90+	176	P	DA
L4		MP LIGHTING	L904	BOLLARD PATH LIGHT	4.5" SQUARE x 24" H	LED	8	2700K	90+	357	F	B0-U1-G0
L6		LUCIFER	IMPACT - DOUBLE	RECESSED IN WALL	3.27" W x 2.75" H	LED	6.5	2700K	80+	150	F	B0-U1-G0
L11		WAGNER	Lumenpod 16	HANDRAIL STEP LIGHT	0.63" DIA x 0.76" D	LED	~2	2700K	85	116	F	DA
L12		BK LIGHTING	MINI MICRO FLOOD	TREE MOUNT DOWNLIGHT	1.625" DIA. x 4.5" L	LED	2.5	2700K	90+	176	P	N/A
L13		BK LIGHTING	MINI MICRO MEDIUM FLOOD	TREE MOUNT DOWNLIGHT	1.625" DIA. x 4.5" L	LED	2.5	2700K	90+	176	P	N/A
L17		MP LIGHTING	L904-8-W27H-24	BOLLARD PATH LIGHT	6 1/2" W x 6 1/2" H x 24" H	LED	8	2700K	90	357	P	DA
L18		PRIMUS LIGHTING	DECOSTRING D5W-36-120-G16.5F-27/200	STRING LIGHTS	36" SPACING	LED	2.5	2700K	85	200	N/A	N/A
L20		LUMIERE	EON 303-B1-LEDB1	BOLLARD PEDESTRIAN / PARKING	5.7" x 5" x 36" H	LED	8.5	2700K	90	600	P	B0-U1-G1
L21		BEGA	24 064-K27	PARKING IN-WALL	10 1/2" W x 2 3/4" H	LED	7.2	2700K	80+	493	P	B0-U2-G2
L22		AION LED	4924WR	SIGN LIGHT PEDESTRIAN GATE	0.72" x 0.80" INCL CLIP	LED	2.4W/FT	2700K	90	NA	N/A	N/A
L23		AION LED	4924WR	SIGN LIGHT VEHICULAR GATE	0.72" x 0.80" INCL CLIP	LED	2.4W/FT	2700K	90	NA	N/A	N/A
L25		BEGA	24 372-K27	WALL MOUNT SCONCE W/ MOTION CTRL	7 7/8" x 4 3/8" x 3 3/8"	LED	6.1	2700K	90	459	F	B0-U0-G0
L26		MP LIGHTING	U306	WATER FEATURE FIXTURE SIDE MOUNTED	2.5" DIA. x 2.25" H	LED	2.6	2700K	90+	75	P	B0-U1-G0

ALL LUMINAIRES ARE ON AN ASTRONOMICAL TIMER WITH AUTOMATIC CURFEW SHUT-OFF. ADDITIONAL USE OF MOTION DETECTORS WHERE AFTER HOURS USE MAY BE DESIRED.
ALL LUMINAIRES ARE DIMMABLE DOWN TO 1% OR LESS.

'D' FIXTURES ARE DECORATIVE BY OTHERS



City of San Jose Interim Lighting Policy Broad Spectrum Lighting (LED) for Private Development

A Permit Adjustment which includes the following information and demonstrates conformance with the identified standards is required in order to obtain approval for an exception to the required use of Low Pressure Sodium Lighting on private development:

Outdoor Lighting Plan

Provide an Outdoor Lighting Plan including:

- Luminaire Schedule (number, lamp type, wattage, color rendering index (CRI), Correlated Color Temperature (CCT), Backlight, Uplight, and Glare (BUG) Rating, pole height, distribution type)
- Photometric grid showing illumination levels from all exterior light sources (per LM-79-08)¹
- Manufacturers specification for all proposed lighting fixtures.

Illumination Levels

- CBEA Site Lighting Performance Specification for Light Zone 2
http://apps1.eere.energy.gov/buildings/publications/pdfs/alliances/cbea_led_site_lighting_spec.pdf
- IESNA RP-33-99 Lighting for Exterior Environments
- IESNA RP-8-00 - Standard Practice for Roadway Lighting,(Private Streets & Adjacent Sidewalks)
- IESNA DG-5-94 - Recommended Lighting for Walkways and Class 1 Bikeways
- IESNA RP-20-98 - Lighting for Parking Facilities
- Average illumination levels not exceeding IESNA standards by more than 0.2 foot candles

Backlight, Uplight & Glare

- CALGreen Nonresidential Mandatory Measures 5.106.8 - Maximum BUG Ratings.¹ (Lighting Zone 3)
- Zoning Code Section 20.40.530:
 - Light fixture heights should not exceed eight feet when adjacent to residential uses unless the setback of the fixture from property line is twice the height of the fixture.
 - No ground mounted light fixture shall exceed twenty-five feet in height.
- Any lighting located adjacent to riparian areas shall be directed downward and away from riparian areas.

Correlated Color Temperature

- The Correlated Color Temperature (CCT) should fall within the recommended range of (3500-4300K) in accordance with the City of San Jose Public Streetlight Design Guide as amended.

Dimming

- Light Level must be reduced for a minimum of 6 hours with a 50% light level reduction, beginning no later than 12 AM.

1. IES LM-79-08 Electrical and Photometric Measurements of Solid-State Lighting Products Illuminating Engineering Society

REV	ISSUED FOR	DATE
CUP		01/07/20
SUP REV1		03/26/21
SUP REV2		10/19/21

WAT KHMER KAMPUCHEA KROM
2740 RUBY AVENUE
SAN JOSE, CALIFORNIA 95148
APN: 652-29-014
PROJECT FILE NO. SP20-024

ANDREW MANN ARCHITECTURE
360 LANGTON STREET, SUITE 302
SAN FRANCISCO, CALIFORNIA, 94103
TELEPHONE: 415-883-4134
ANDREW@MANNARCHITECTURE.COM

E J A
E J A LIGHTING
201 ALAMEDA DEL PRADO, SUITE 204
NOVATO, CALIFORNIA, 94903
TELEPHONE: 415-482-0823
EJALIGHTING.COM

SHEET TITLE:
SUP APPLICATION
LIGHTING
SCHEDULE

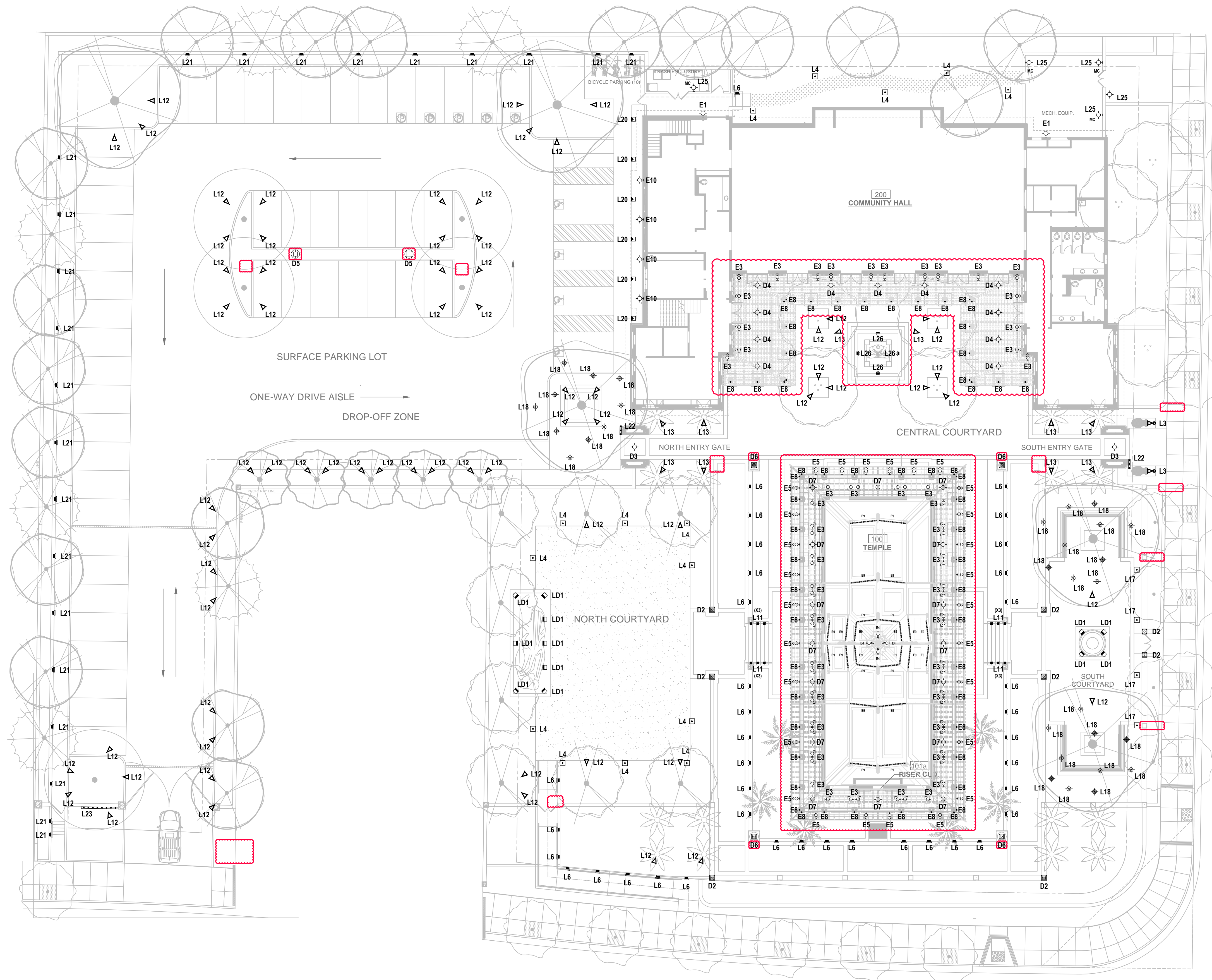
ORIGINAL SHEET ISSUE DATE:
03/26/2021

SCALE: NA DRAWN BY: MW

SHEET NUMBER:

EL-S

REV	ISSUED FOR	DATE
CUP		01/07/20
SUP REV1		03/26/21
SUP REV2		10/19/21



WAT KHMER KAMPUCHEA KROM
 2740 RUBY AVENUE
 SAN JOSE, CALIFORNIA 95148
 APN: 652-29-014
 PROJECT FILE NO. SP20-024

ANDREW MANN ARCHITECTURE
 360 LANGTON STREET, SUITE 302
 SAN FRANCISCO, CALIFORNIA 94103
 TELEPHONE: 415-883-4134
 ANDREWMANNARCHITECTURE.COM

E J A
 ELLIOTT JOHNSON ARCHITECTS
 201 ALAMEDA DEL PRADO, SUITE 204
 NOVATO, CALIFORNIA 94903
 TELEPHONE: 415-482-0923
 EJA.LIGHTING.COM

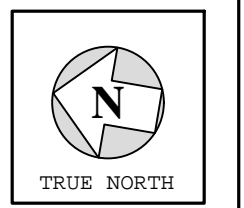
SHEET TITLE:
 SUP APPLICATION
 OVERALL
 SITE PLAN
 LIGHTING

ORIGINAL SHEET ISSUE DATE:
 03/26/2021

SCALE: 1/16" = 1'-0"
 DRAWN BY: MW

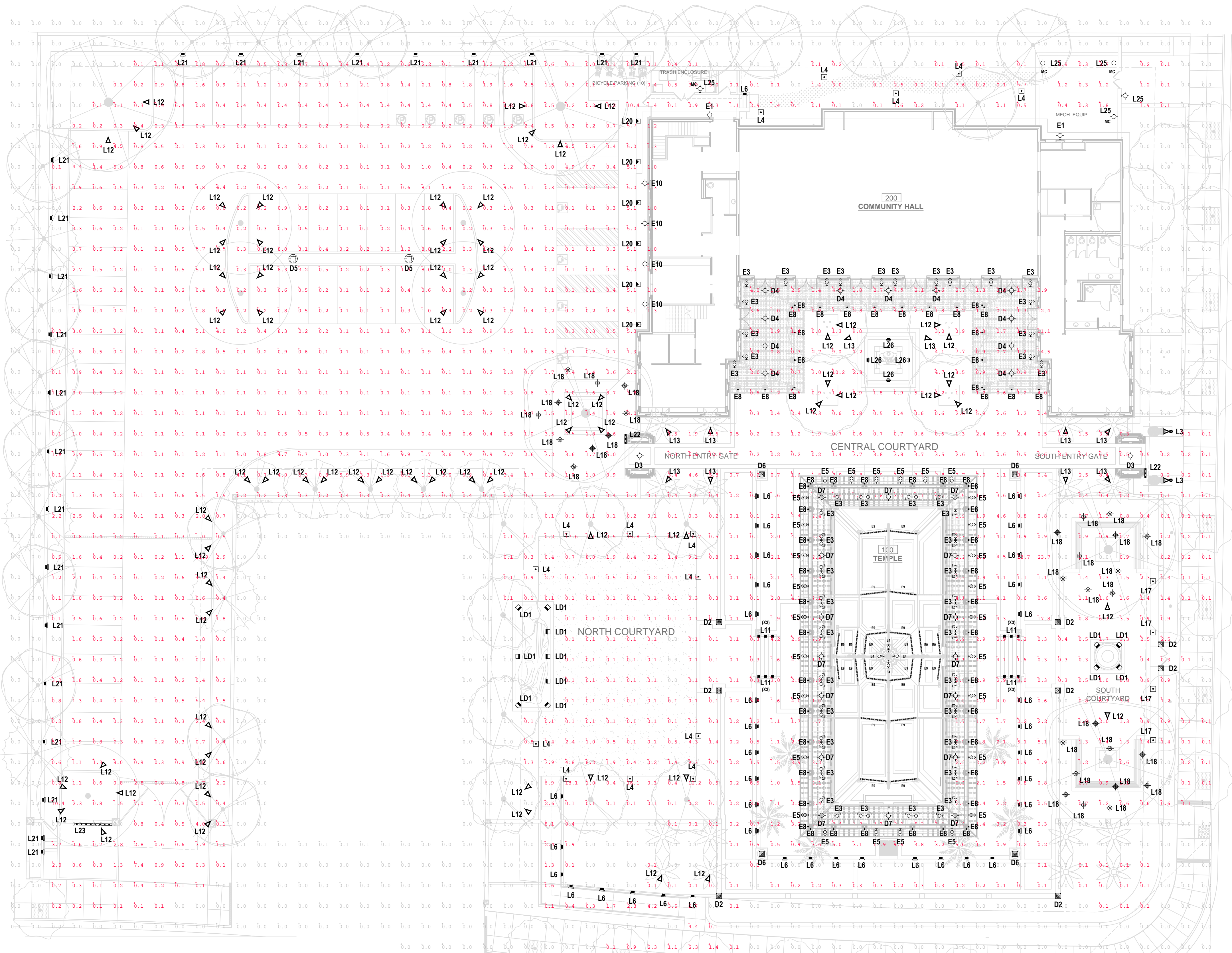
SHEET NUMBER:

L1.2



J:\WORK\TEMPLE LANSING 2020\DRAWINGS\2021\03\26\21\032621-03R.PLT

REV	ISSUED FOR	DATE
CUP		01/07/20
SUP REV1		03/26/21
SUP REV2		10/19/21



WKKK SITE
TOTAL WATTS = 3053.61
LPD = .04 WATTS/SQ.FT
UWLPR = 0.22
AREA = 81,022 SQ.FT

WAT KHMER KAMPUCHEA KROM
 2740 RUBY AVENUE
 SAN JOSE, CALIFORNIA 95148
 APN: 652-29-014
 PROJECT FILE NO. SP20-024

ANDREW MANN ARCHITECTURE
 360 LANGTON STREET, SUITE 302
 SAN FRANCISCO, CALIFORNIA 94103
 TELEPHONE: 415-883-4134
 ANDREWMANNARCHITECTURE.COM

E J A
 ELLIOTT JOHNSON ARCHITECTS
 201 ALAMEDA DEL PRADO, SUITE 204
 NOVATO, CALIFORNIA 94903
 TELEPHONE: 415-482-0823
 EJA@LIGHTING.COM

SHEET TITLE:
 SUP APPLICATION
 OVERALL
 SITE PLAN
 PHOTOMETRIC
 GRID

ORIGINAL SHEET ISSUE DATE:
 03/26/2021

SCALE: 1/16" = 1'-0"
 DRAWN BY: MW

SHEET NUMBER:



L1.2A