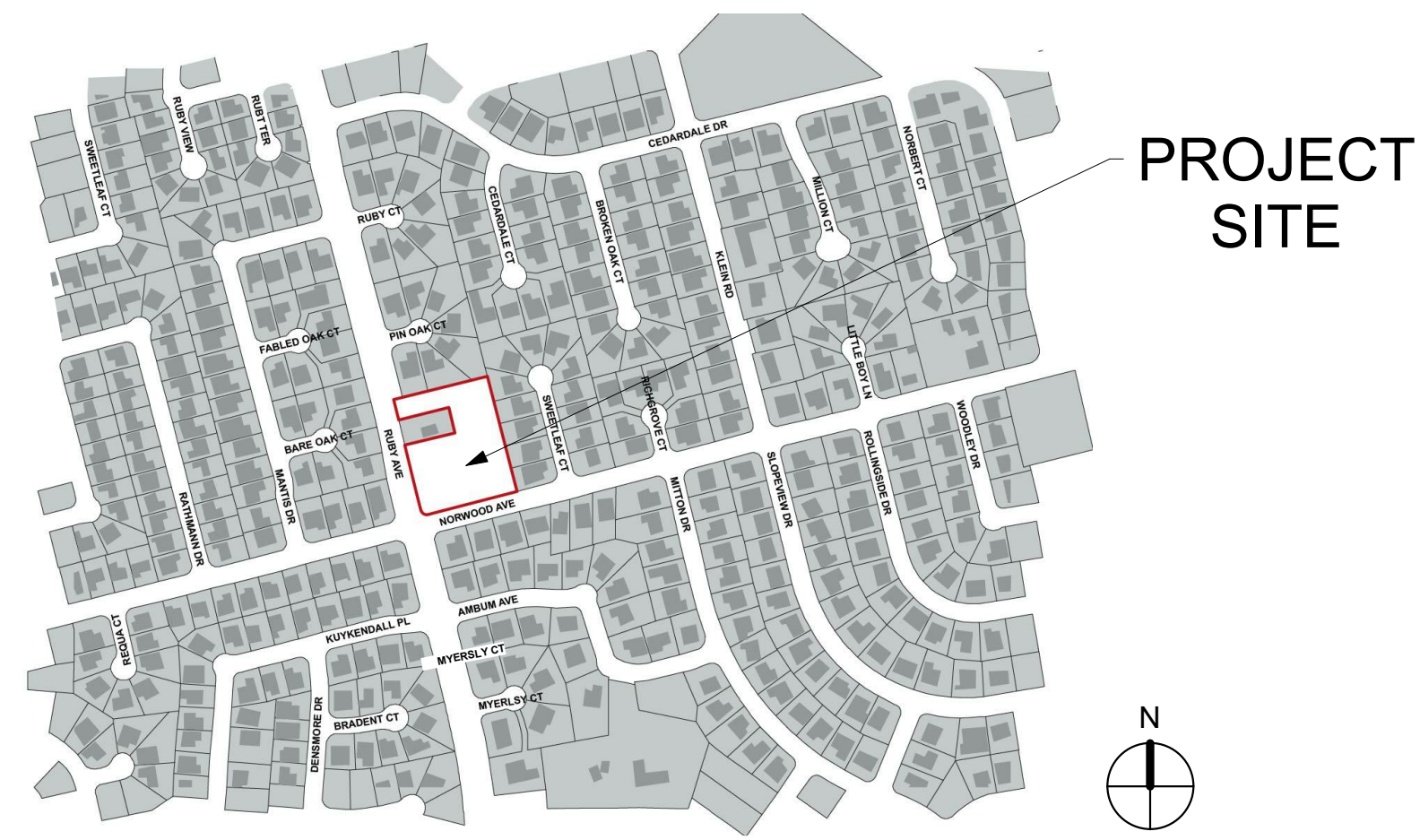
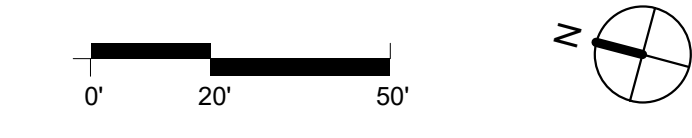
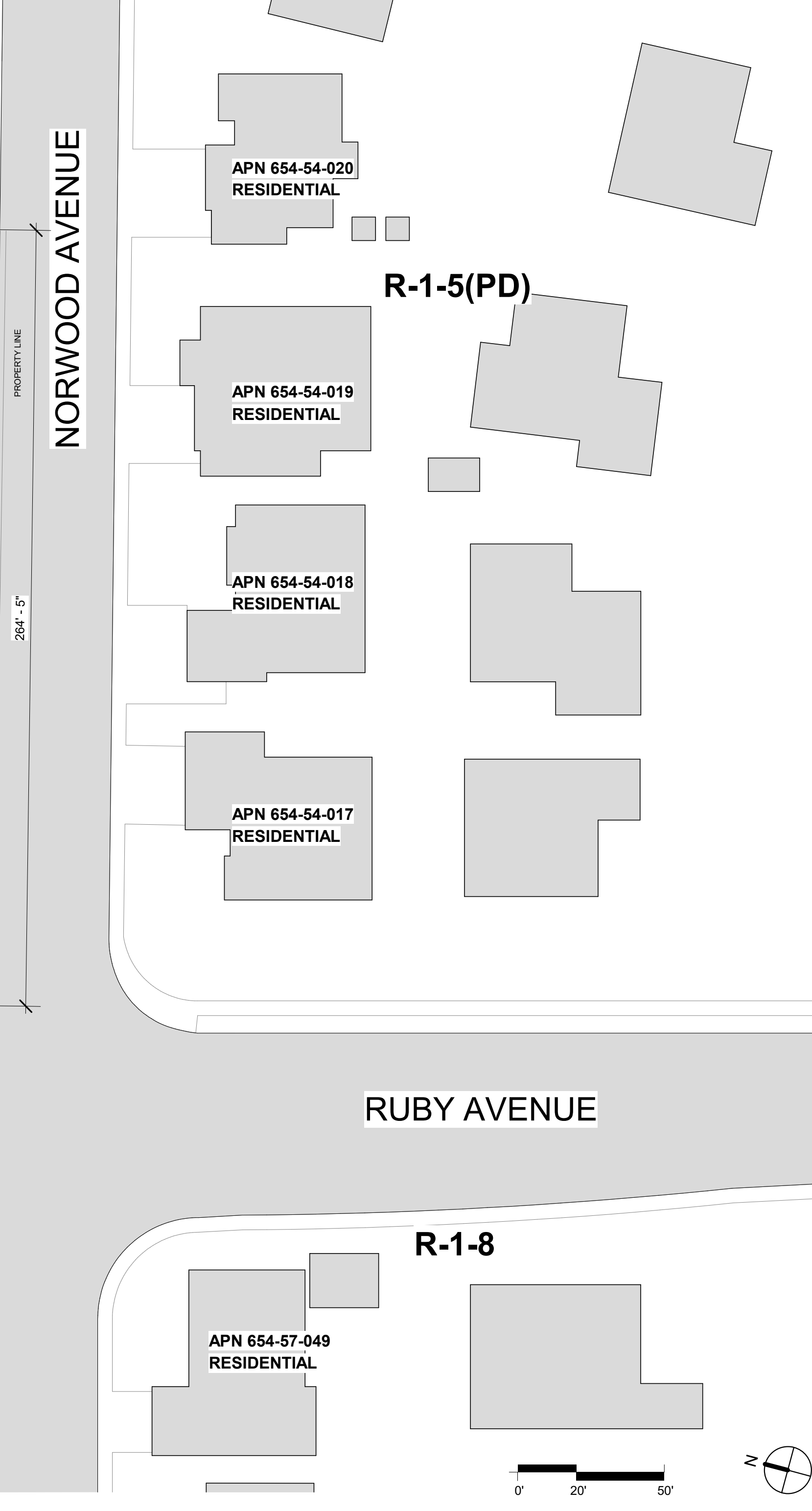
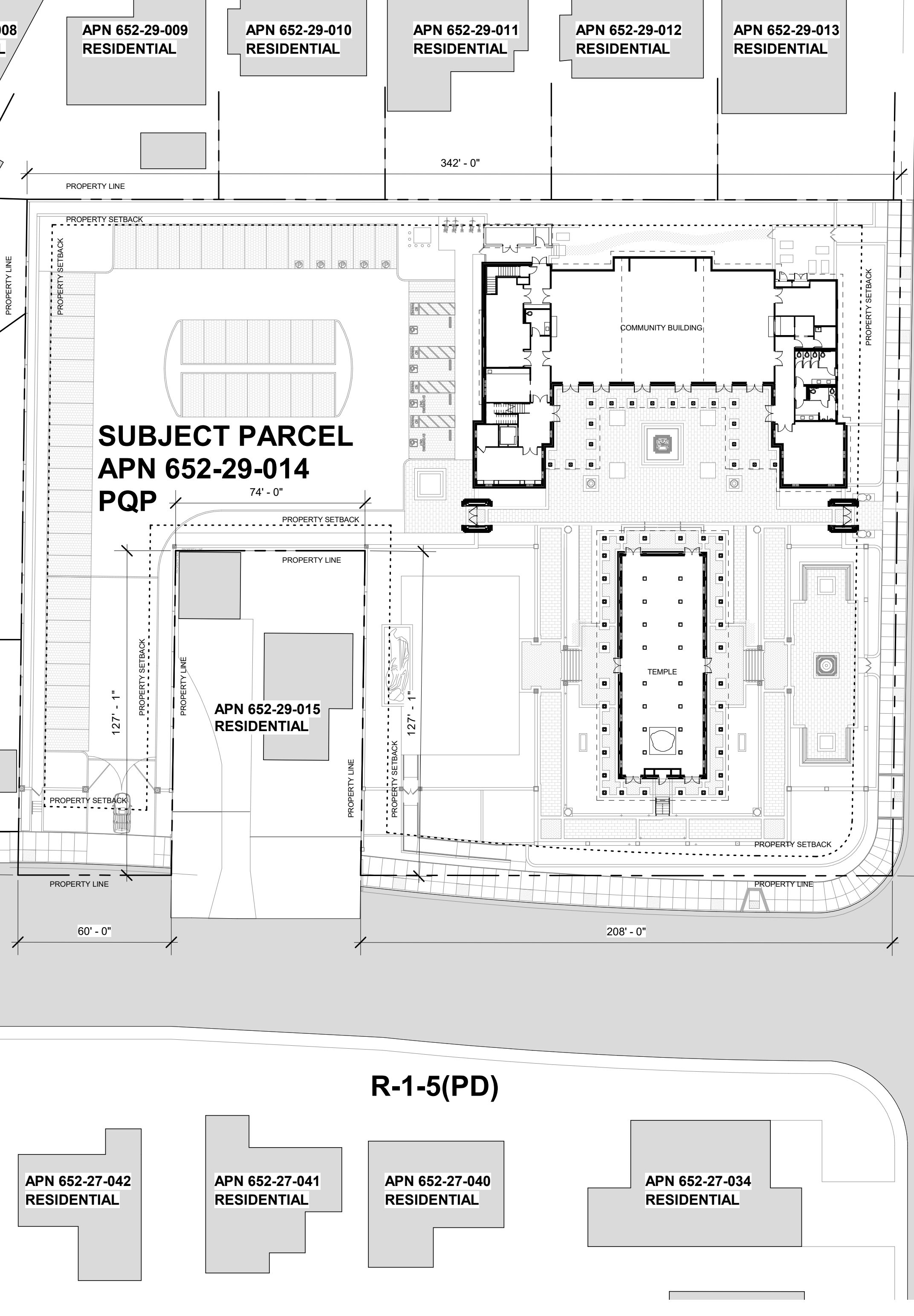
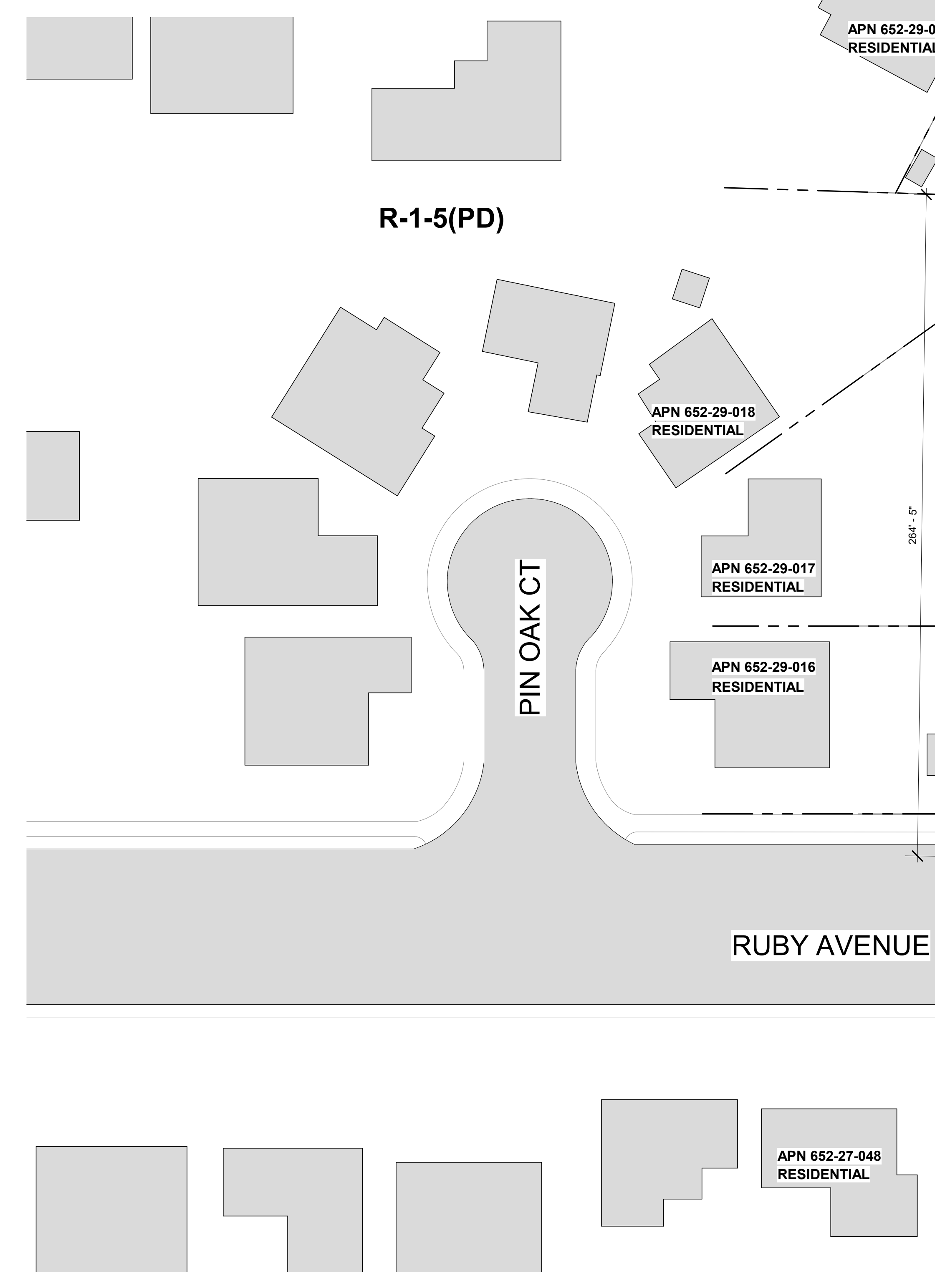
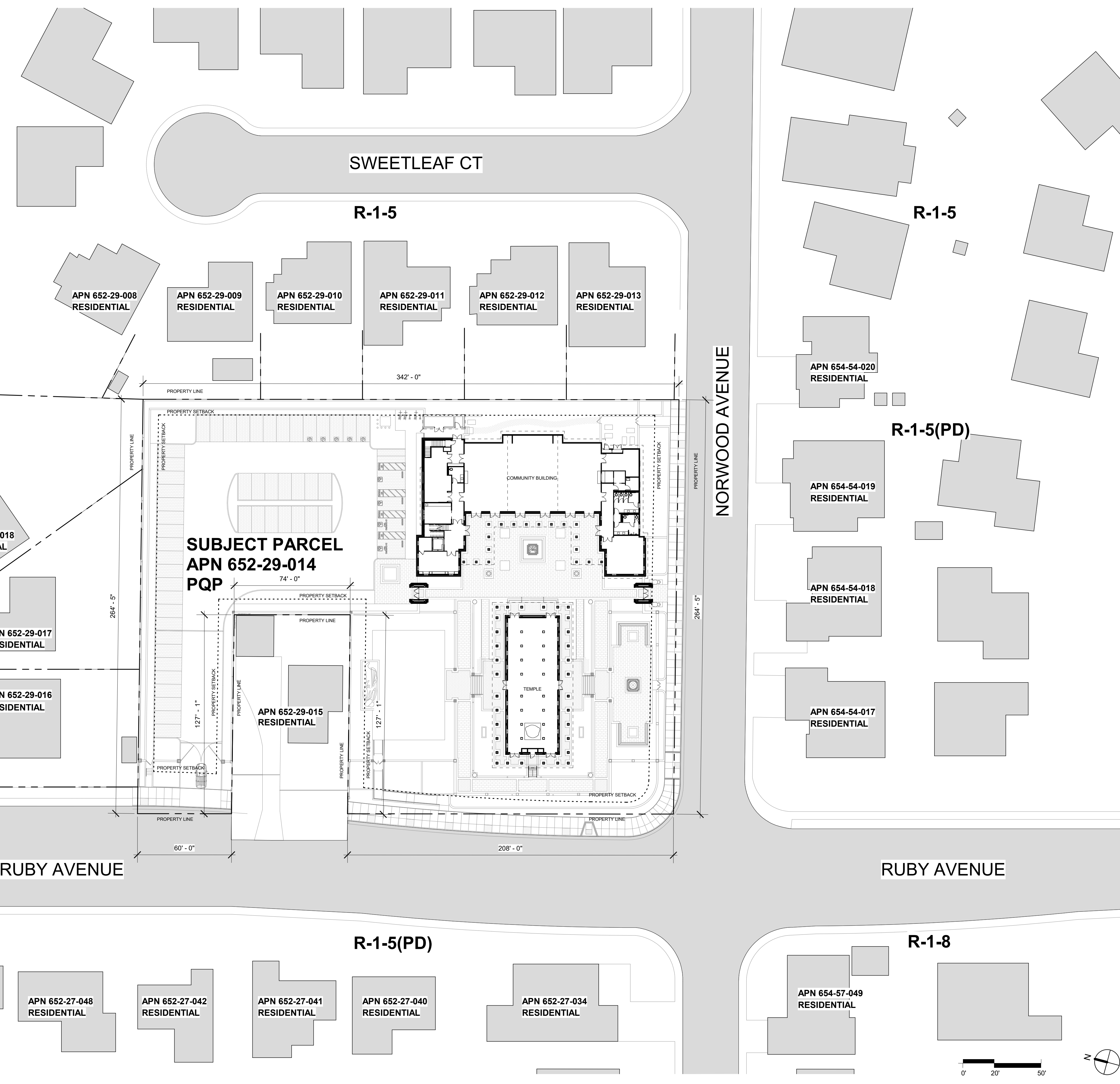
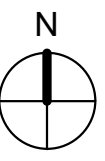


DATE PRINTED: 03/26/21 10:19:21 AM



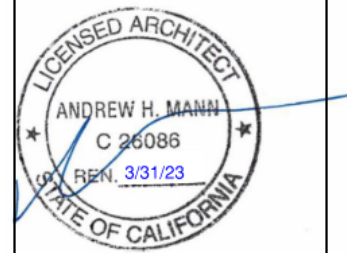
2 VICINITY MAP
SCALE: 1" = 500'-0"



1 SITE CONTEXT PLAN (SUP)
SCALE: 1/32" = 1'-0"

REV	ISSUED FOR	DATE
REV 1 SUP		03/26/21
REV 2 SUP		10/19/21
REV 3 SUP		02/09/22

NOT FOR CONSTRUCTION



WAT KHMER KAMPUCHEA KROM
2740 RUBY AVENUE
SAN JOSE, CALIFORNIA 95148
APN: 652-29-014
PROJECT FILE NO. SP20-024

ANDREW MANN ARCHITECTURE
360 LANGTON STREET, SUITE 302
SAN FRANCISCO, CALIFORNIA, 94103
TELEPHONE: 415-883-4134
ANDREW@MANNARCHITECTURE.COM

SIEGEL & STRAIN Architects
6201 DOYLE STREET, SUITE B
EMERYVILLE, CALIFORNIA, 94608
TEL 510-547-8992
TEL 510-547-2604
FAX 510-547-2604
SIEGEL@STRAIN.COM

SHEET TITLE:
ARCHITECTURAL SITE "CONTEXT" PLAN (SUP)

ORIGINAL SHEET ISSUE DATE:	03/26/21
SCALE:	As indicated
DRAWN BY:	AMA
SHEET NUMBER:	

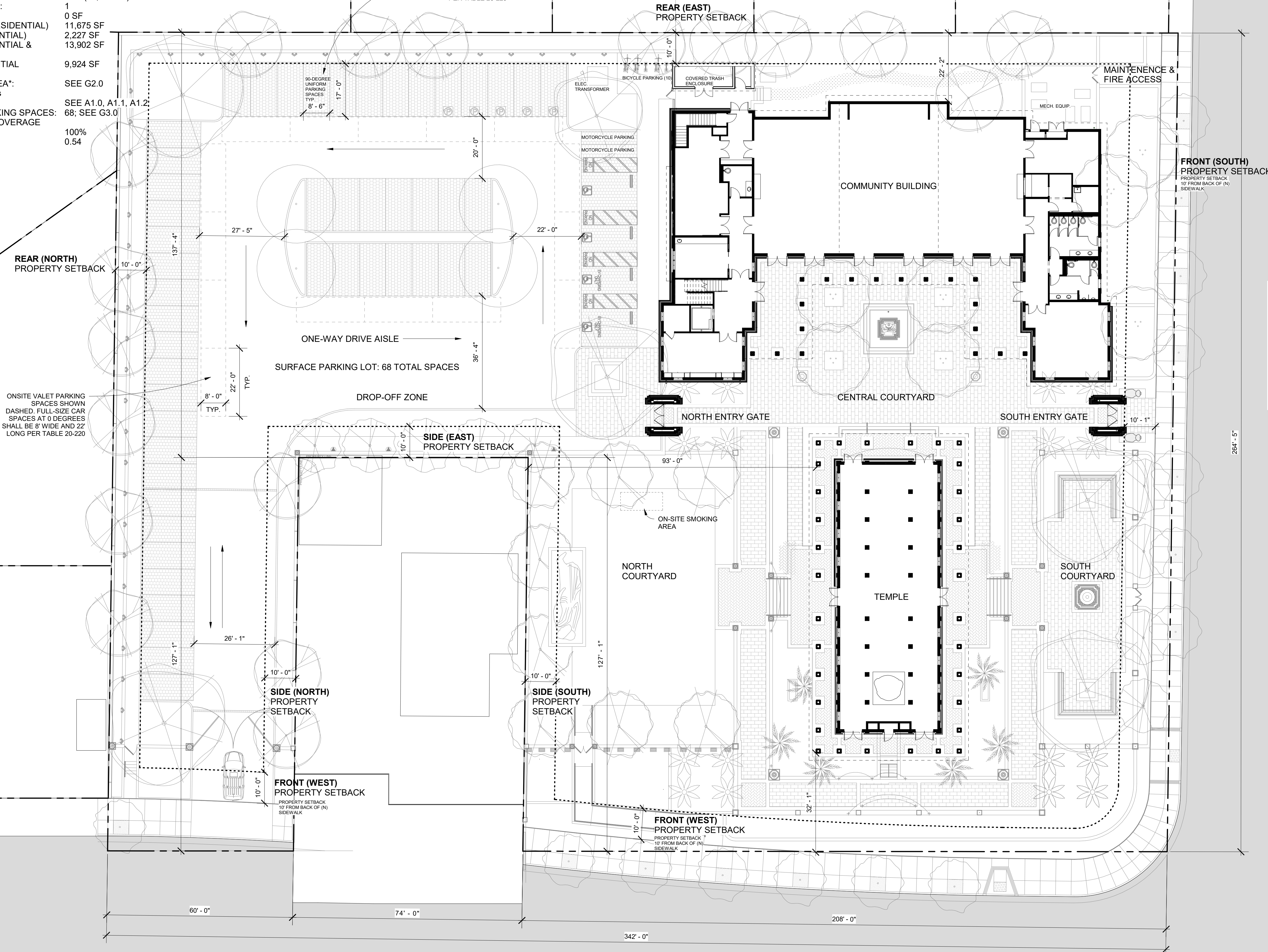
S1.0

NOTE:
 SEE S2.0 FOR LANDSCAPE ELEMENTS NOT NOTED
 SEE S3.0 FOR CIVIL ELEMENTS NOT NOTED
 SEE S3.1 & S3.2 FOR CROSS SECTIONS OF STREETS, DRIVEWAYS AND RIGHT OF WAYS
 SEE S4.0 FOR EXTERIOR LIGHTING ELEMENTS NOT NOTED

SITE AREA SUMMARY

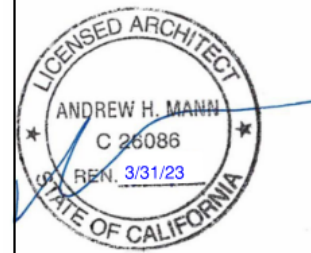
GROSS TOTAL ACRES: 1.86 (81,022 SF)
 NET TOTAL ACRES (USABLE): 1.86 (81,022 SF)
 TOTAL NUMBER OF DWELLING UNITS: 1
 TOTAL EXISTING AREA (GROSS): 0 SF
 TOTAL GROSS FLOOR AREA (NON-RESIDENTIAL): 11,675 SF
 TOTAL GROSS FLOOR AREA (RESIDENTIAL): 2,227 SF
 TOTAL GROSS FLOOR AREA (RESIDENTIAL & NON-RESIDENTIAL): 13,902 SF
 NET FLOOR AREA FOR NON-RESIDENTIAL USE (85% OF GROSS): 9,924 SF
 TOTAL PROPOSED GROSS SF BY AREA*: SEE G2.0
 *for Planning Department purposes
 TOTAL PROPOSED NET SF BY AREA: SEE A1.0, A1.1, A1.2
 TOTAL NUMBER OF PROPOSED PARKING SPACES: 68; SEE G3.0
 PERCENTAGE OF PROPOSED SITE COVERAGE (INCLUDING LANDSCAPING): 100%
 RESIDENTIAL DENSITY(UNITS/ACRE): 0.54

UNIFORM PARKING SPACES AT 90-DEGREES SHALL BE 8'-6" WIDE AND 17' LONG PER TABLE 20-220



REV	ISSUED FOR	DATE
REV 1 SUP		03/26/21
REV 2 SUP		10/19/21
REV 3 SUP		02/09/22

NOT FOR CONSTRUCTION



WAT KHMER KAMPUCHEA KROM
 2740 RUBY AVENUE
 SAN JOSE, CALIFORNIA 95148
 APN: 652-29-014
 PROJECT FILE NO. SP20-024

ANDREW MANN ARCHITECTURE
 360 LANGTON STREET, SUITE 302
 SAN FRANCISCO, CALIFORNIA, 94103
 TELEPHONE: 415-883-4134
 ANDREW@MANNARCHITECTURE.COM

SIEGEL & STRAIN Architects
 6201 DOYLE STREET, SUITE B
 EMERYVILLE, CALIFORNIA, 94608
 TEL 510-547-8092
 FAX 510-547-2604
 SIEGEL@STRAIN.COM

SHEET TITLE:
ARCHITECTURAL SITE PLAN (SUP)

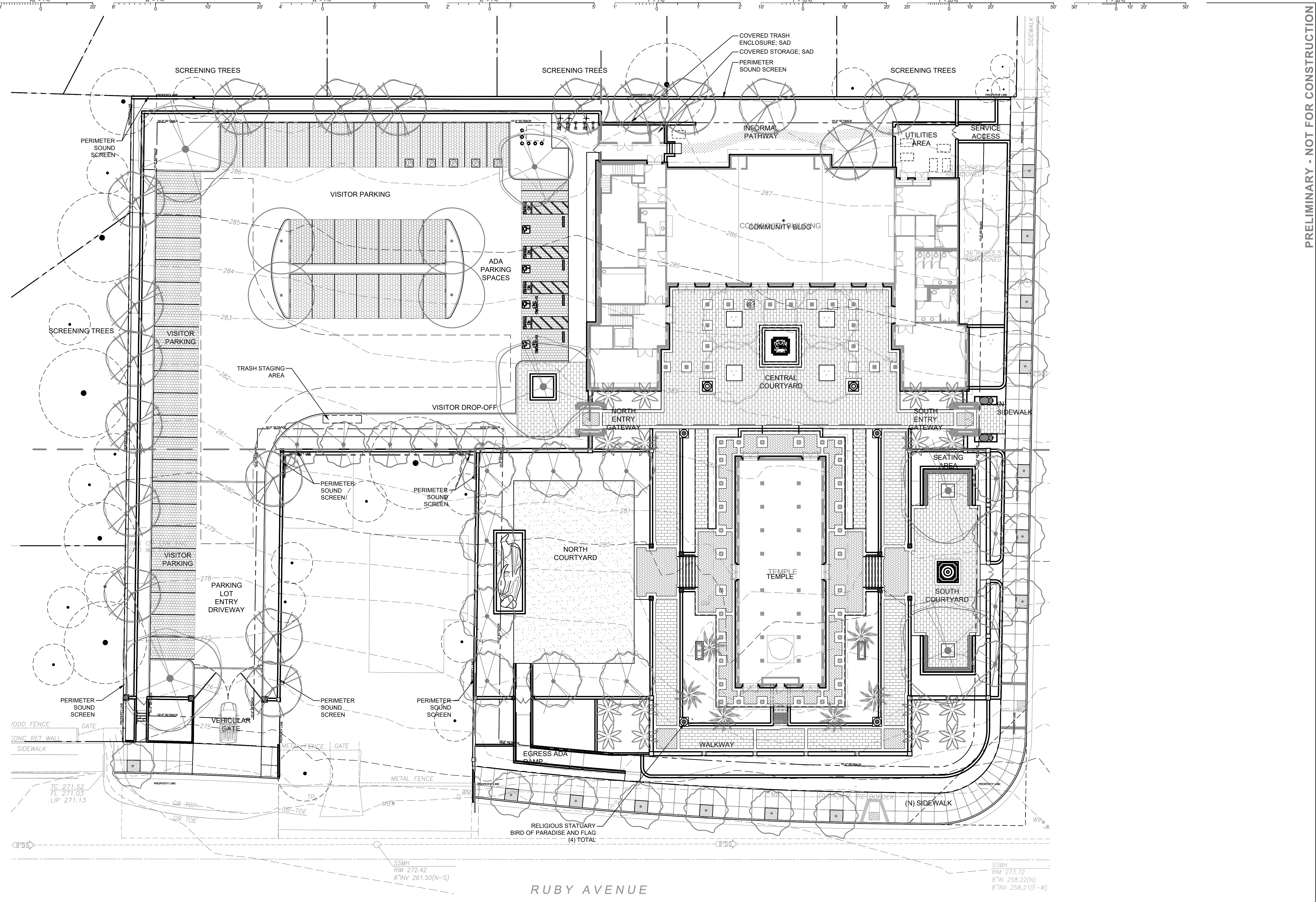
ORIGINAL SHEET ISSUE DATE:
 03/26/21

SCALE:
 1/16" = 1'-0"

DRAWN BY:
 AMA

SHEET NUMBER:
S1.1

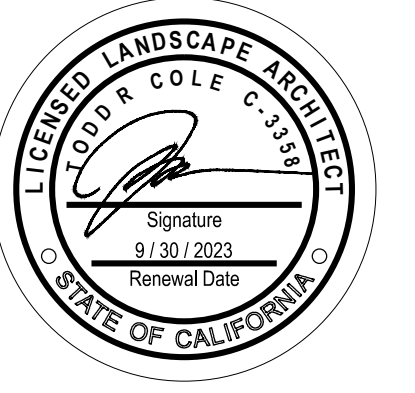
Copyright © Strata Landscape Architecture



STRATA
Landscape Architecture

136 Frelon Street,
San Francisco, California 94107

415.431.9200 | strata-inc.com



**WAT KHMER
KAMPUCHEA KROM**
2740 Ruby Avenue, San Jose, Ca. 95148
APN 652-29-014 SP20-024

Revisions

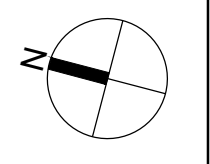
1	01.07.20	CUP
2	03.26.21	REV-1 SUP
3	10.19.21	SUP REV-2
4	02.09.22	SUP REV-3

Sheet by: TC/GG
Drawing Scale: 1/16" = 1'-0"
Project #: 0400

Date: 26 MARCH 2021
SUP SUBMITTAL SET

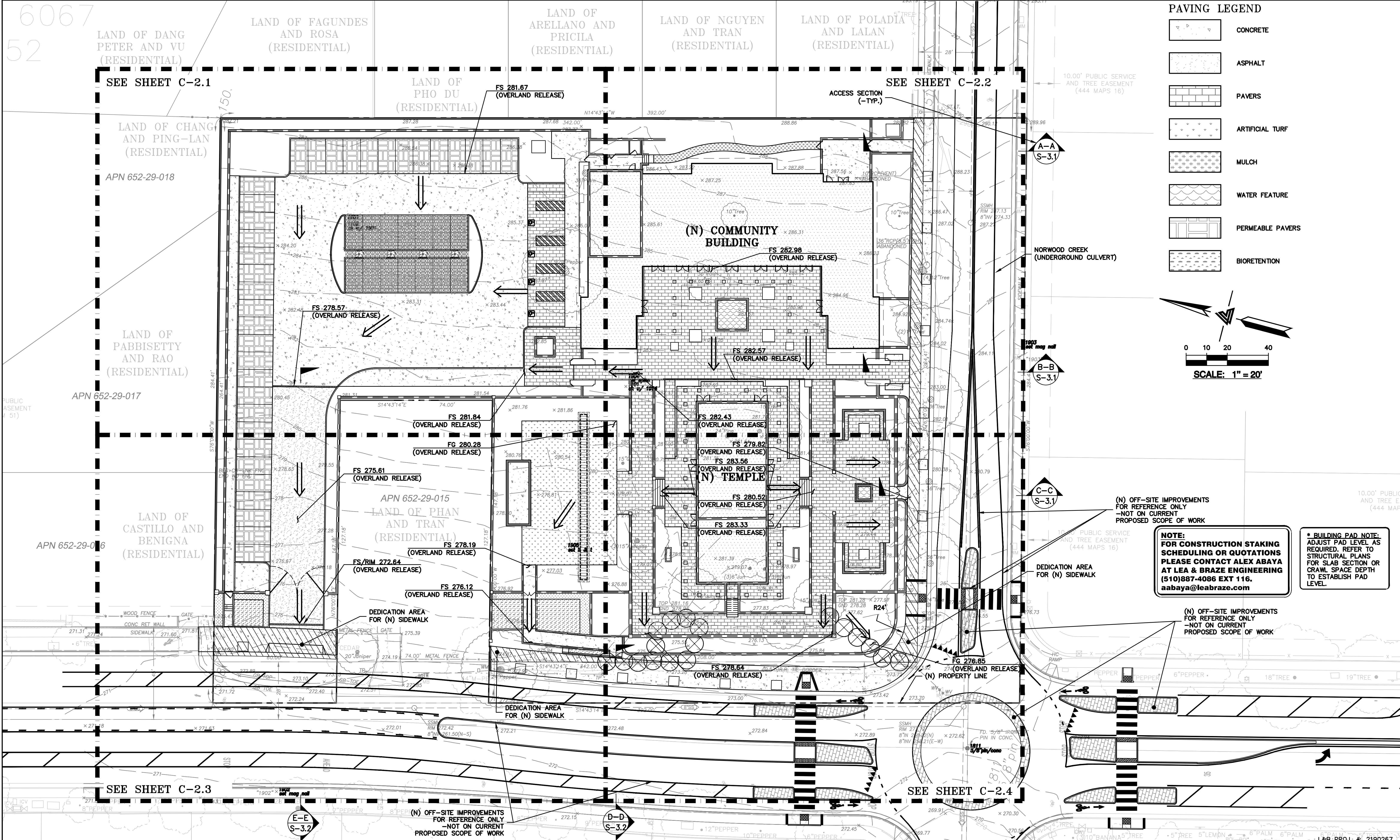
LANDSCAPE SITE PLAN

S2.0



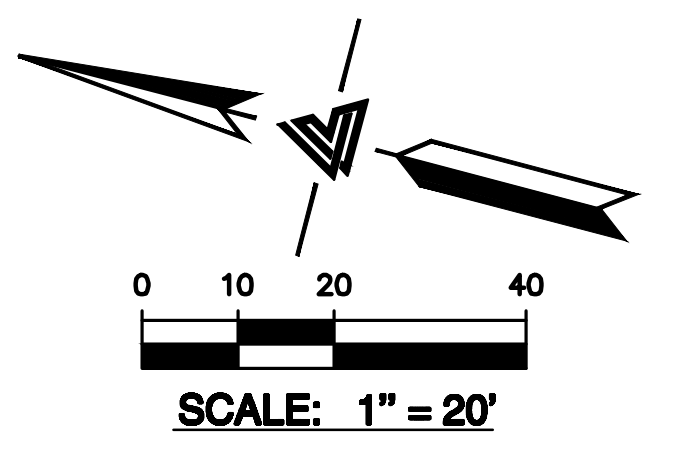
PRELIMINARY - NOT FOR CONSTRUCTION

6067
52



PAVING LEGEND

	CONCRETE
	ASPHALT
	PAVERS
	ARTIFICIAL TURF
	MULCH
	WATER FEATURE
	PERMEABLE PAVERS
	BIORETENTION



(N) OFF-SITE IMPROVEMENTS FOR REFERENCE ONLY - NOT ON CURRENT PROPOSED SCOPE OF WORK

NOTE:
FOR CONSTRUCTION STAKING SCHEDULING OR QUOTATIONS PLEASE CONTACT ALEX ABAYA AT LEA & BRAZE ENGINEERING (510)887-4086 EXT 116. aabaya@leabraze.com

(N) OFF-SITE IMPROVEMENTS FOR REFERENCE ONLY - NOT ON CURRENT PROPOSED SCOPE OF WORK

BY	DATE	CSJ	DATE	REVISIONS
TC	02-09-22			PLAN REVISION 3 - SUP
TC	10-19-21			PLAN REVISION 2 - SUP
DM/TC	03-26-21			PLAN REVISION 1 - SUP

WAT KHMER KAMPUCHEA KROM
2740 RUBY AVENUE
SAN JOSE, CA
PHONE: (415) 431-9200
ATTN: TODD COLE

Date: JULY 01, 2020
Scale: AS NOTED
Designed: TC
Drawn: TC
Checked: -
Proj. Engr: TC
File: SP20-024

LEA & BRAZE ENGINEERING, INC.
CIVIL ENGINEERS | LAND SURVEYORS

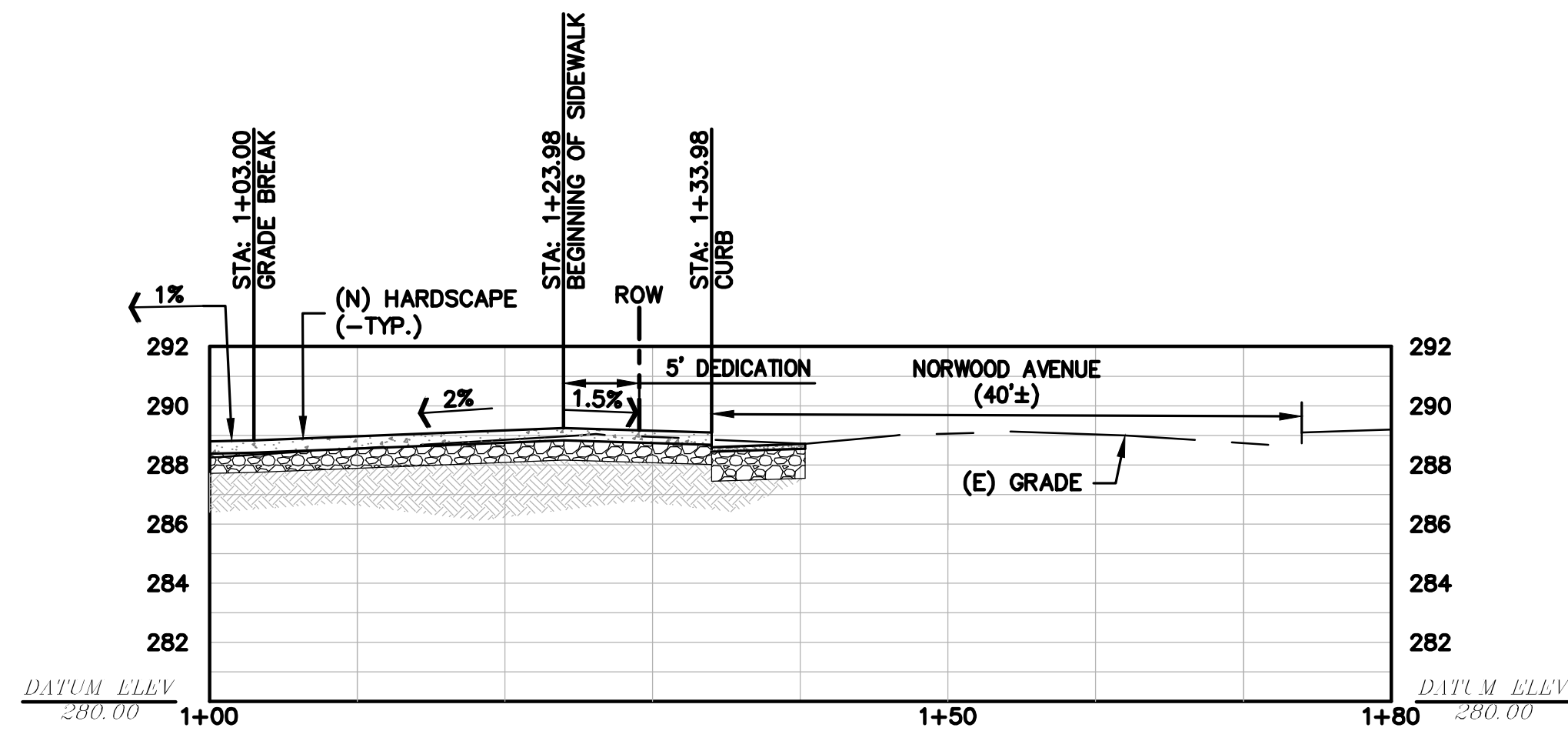
MAIN OFFICE:
2495 INDUSTRIAL PKWY WEST
HAYWARD, CALIFORNIA 94545
(510) 887-4086
WWW.LEABRAZE.COM

REGIONAL OFFICES:
ROSEVILLE
DUBLIN
SAN JOSE

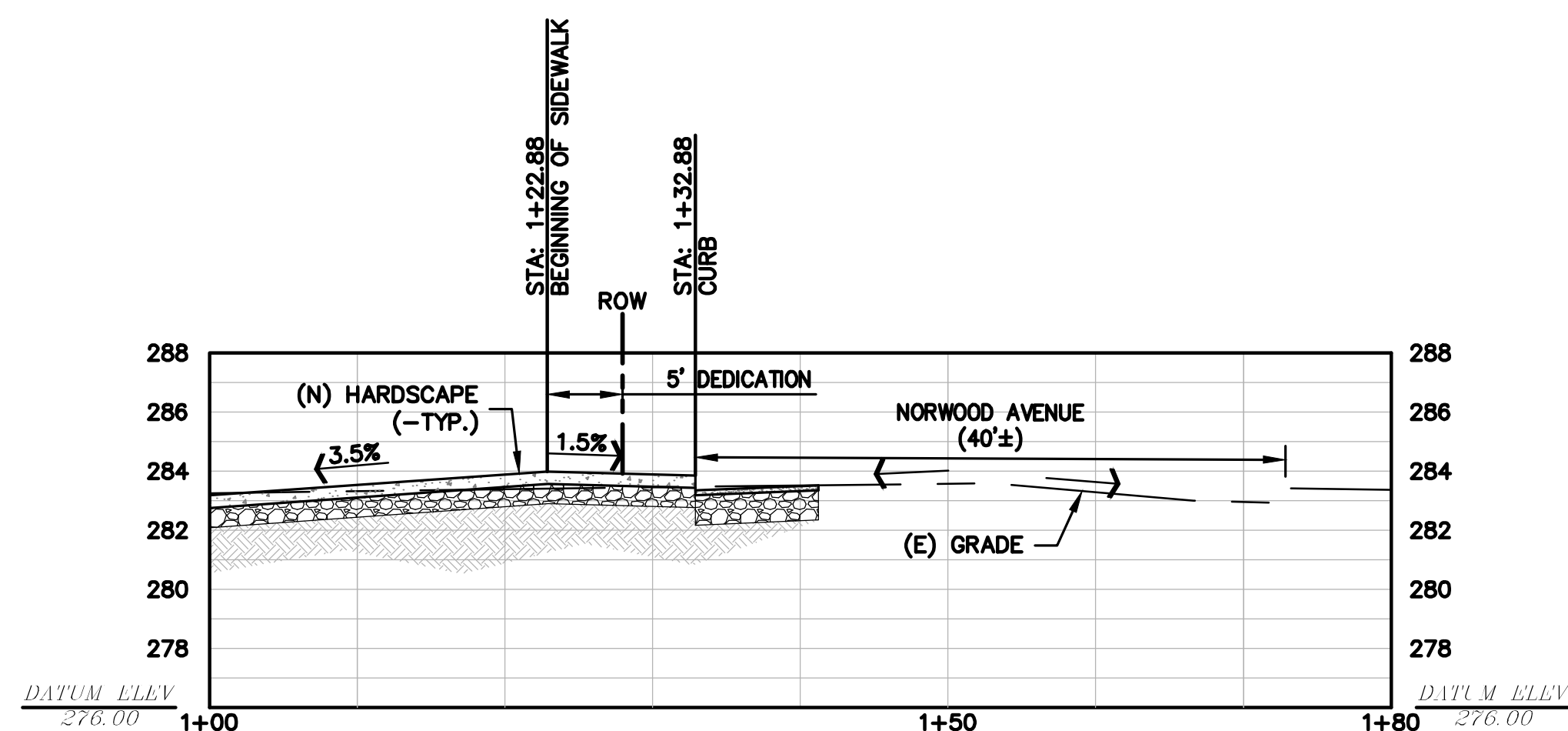
CIVIL IMPROVEMENT PLANS
WAT KHMER KAMPUCHEA KROM - KHMER BUDDHIST TEMPLE
SITE PLAN - CIVIL
APN: 652-29-014

SHEET
S-3.0

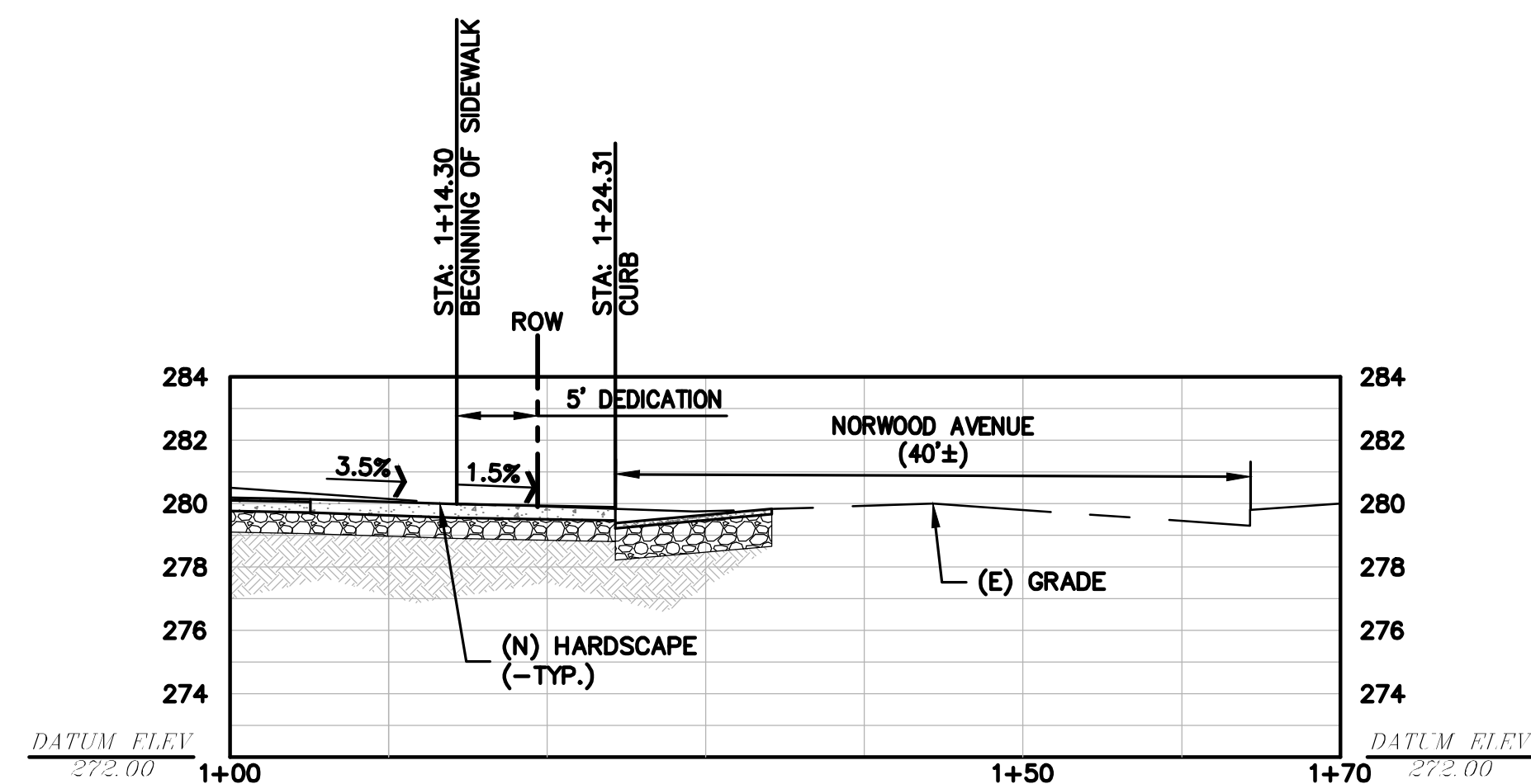
PROJECT FILE #
SP20-024



A-A
NORWOOD AVENUE
SIDEWALK ENTRANCE
 SCALE: 1" = 10' HORIZ
 1" = 5' VERT



B-B
NORWOOD AVENUE
SIDEWALK ENTRANCE
 SCALE: 1" = 10' HORIZ
 1" = 5' VERT



C-C
NORWOOD AVENUE
SIDEWALK ENTRANCE
 SCALE: 1" = 10' HORIZ
 1" = 5' VERT

BY	DATE	CSJ	DATE	REVISIONS
DM/TC	03-26-21			PLAN REVISION 1 - SUP
TC	10-19-21			PLAN REVISION 2 - SUP
TC	02-09-22			PLAN REVISION 3 - SUP

WAT KHMER KAMPUCHEA KROM
 2740 RUBY AVENUE
 SAN JOSE, CA
 PHONE: (415) 431-9200
 ATTN: TODD COLE

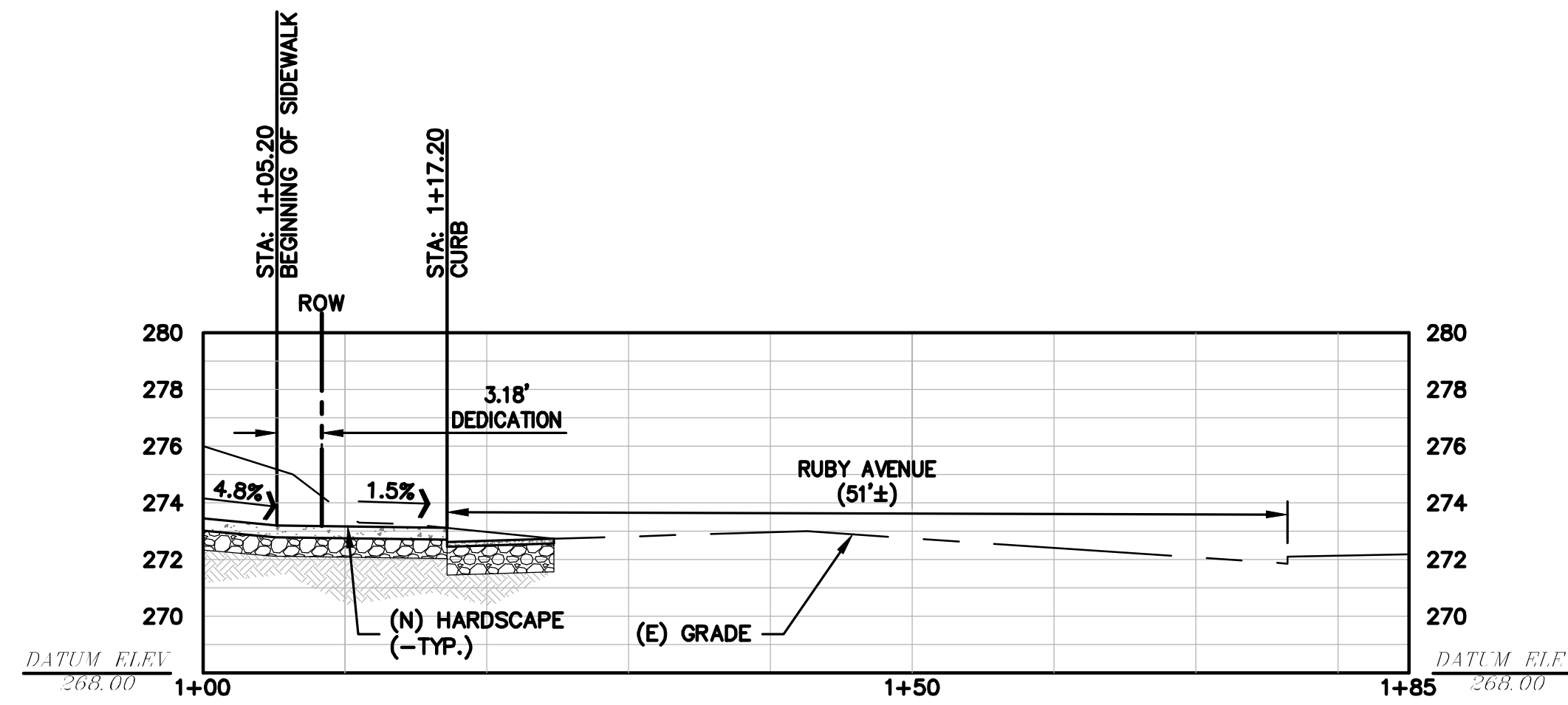


Date: JULY 01, 2020
 Scale: AS NOTED
 Designed: TC
 Drawn: TC
 Checked: -
 Proj. Engr: TC
 File: SP20-024

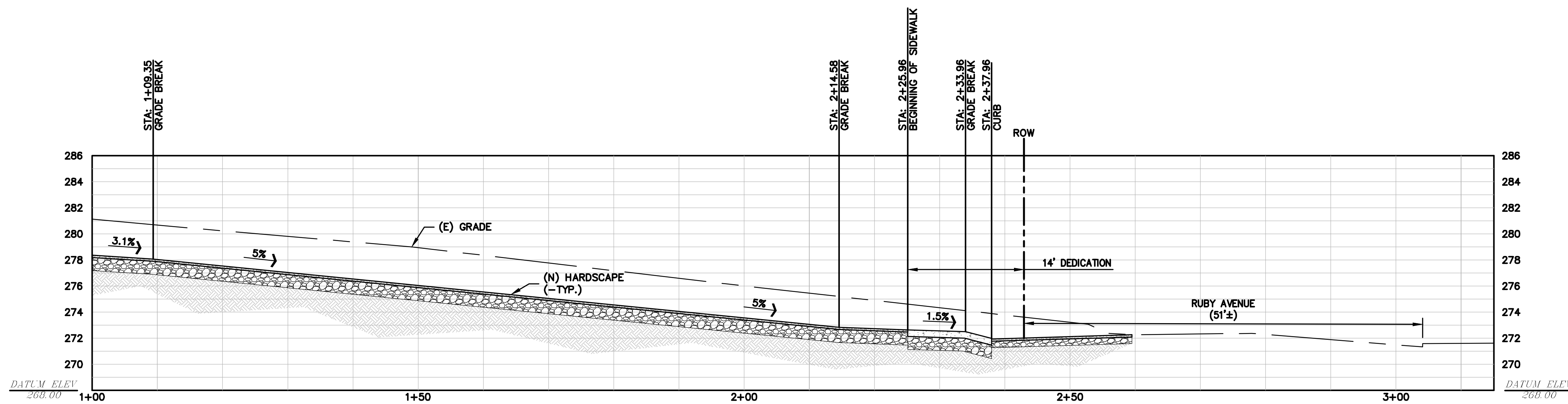
LEA & BRAZE ENGINEERING, INC.
 CIVIL ENGINEERS | LAND SURVEYORS
 MAIN OFFICE:
 2495 INDUSTRIAL PKWY WEST
 HAYWARD, CALIFORNIA 94545
 (510) 887-4086
 WWW.LEABRAZE.COM
 REGIONAL OFFICES:
 ROSEVILLE
 DUBLIN
 SAN JOSE

CIVIL IMPROVEMENT PLANS
 WAT KHMER KAMPUCHEA KROM - KHMER BUDDHIST TEMPLE
 SITE PLAN - CIVIL - SITE SECTIONS
 APN: 652-29-014

L&B PROJ. #: 2190267
 SHEET
S-3.1
 PROJECT FILE #
 SP20-024



D-D
**RUBY AVENUE
 SIDEWALK ENTRANCE**
 SCALE: 1" = 10' HORIZ
 1" = 5' VERT



E-E
**RUBY AVENUE
 DRIVEWAY ENTRANCE**
 SCALE: 1" = 10' HORIZ
 1" = 5' VERT

BY	DATE	CSJ	DATE	REVISIONS
DM/TC	03-26-21			PLAN REVISION 1 - SUP
TC	10-19-21			PLAN REVISION 2 - SUP
TC	02-09-22			PLAN REVISION 3 - SUP

WAT KHMER KAMPUCHEA KROM
 2740 RUBY AVENUE
 SAN JOSE, CA
 PHONE: (415) 431-9200
 ATTN: TODD COLE



Date: JULY 01, 2020
 Scale: AS NOTED
 Designed: TC
 Drawn: TC
 Checked: -
 Proj. Engr: TC
 File: SP20-024

LEA & BRAZE ENGINEERING, INC.
 CIVIL ENGINEERS | LAND SURVEYORS
 MAIN OFFICE:
 2495 INDUSTRIAL PKWY WEST
 HAYWARD, CALIFORNIA 94545
 (510) 887-4086
 WWW.LEABRAZE.COM
 REGIONAL OFFICES:
 ROSEVILLE
 DUBLIN
 SAN JOSE

CIVIL IMPROVEMENT PLANS
 WAT KHMER KAMPUCHEA KROM - KHMER BUDDHIST TEMPLE
 SITE PLAN - CIVIL - SITE SECTIONS
 APN: 652-29-014

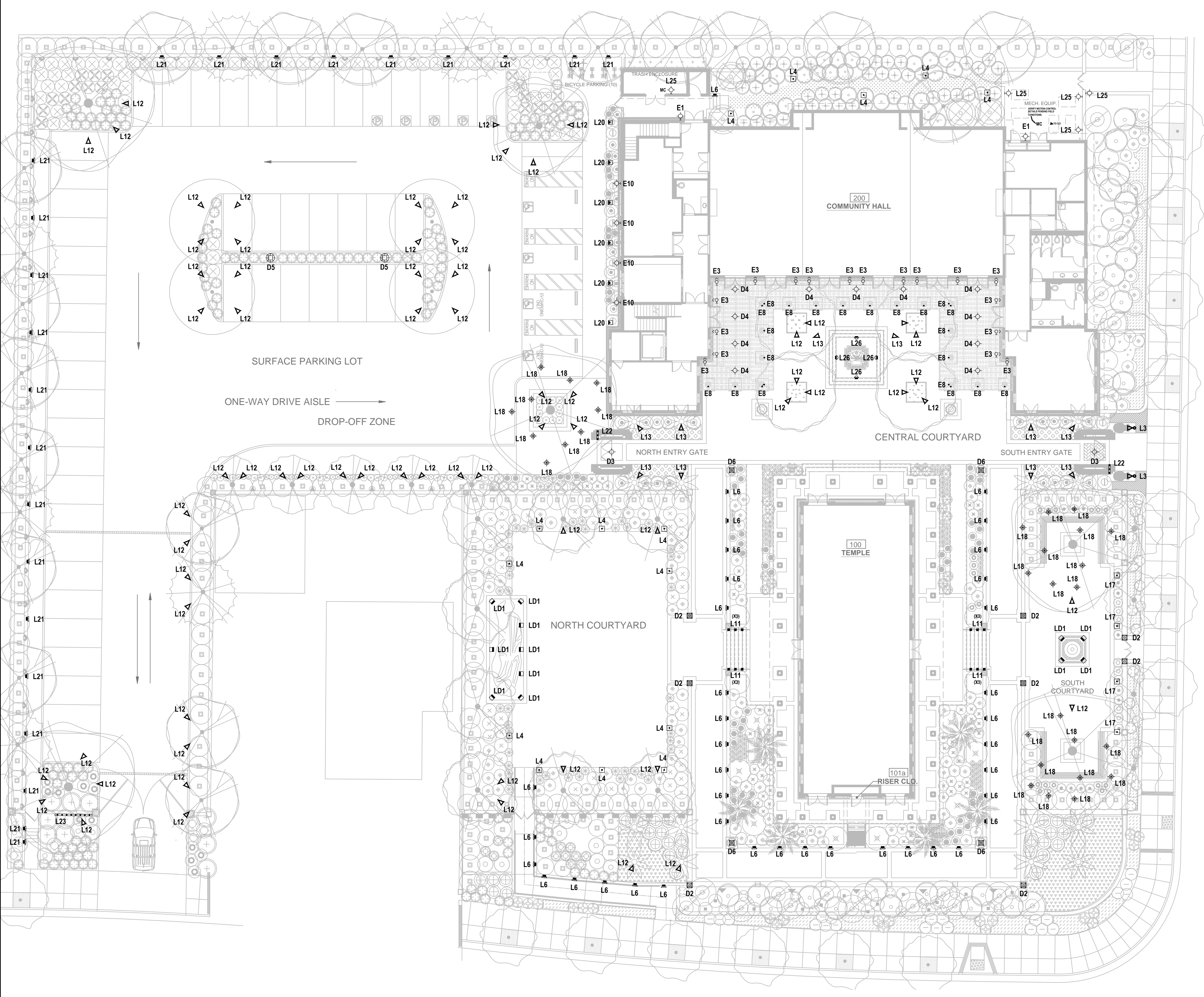
L&B PROJ. #: 2190267
 SHEET
S-3.2
 PROJECT FILE #
 SP20-024

REV	ISSUED FOR	DATE
CUP		01/07/20
SUP REV1		03/26/21
SUP REV2		10/19/21
SUP REV3		02/09/22

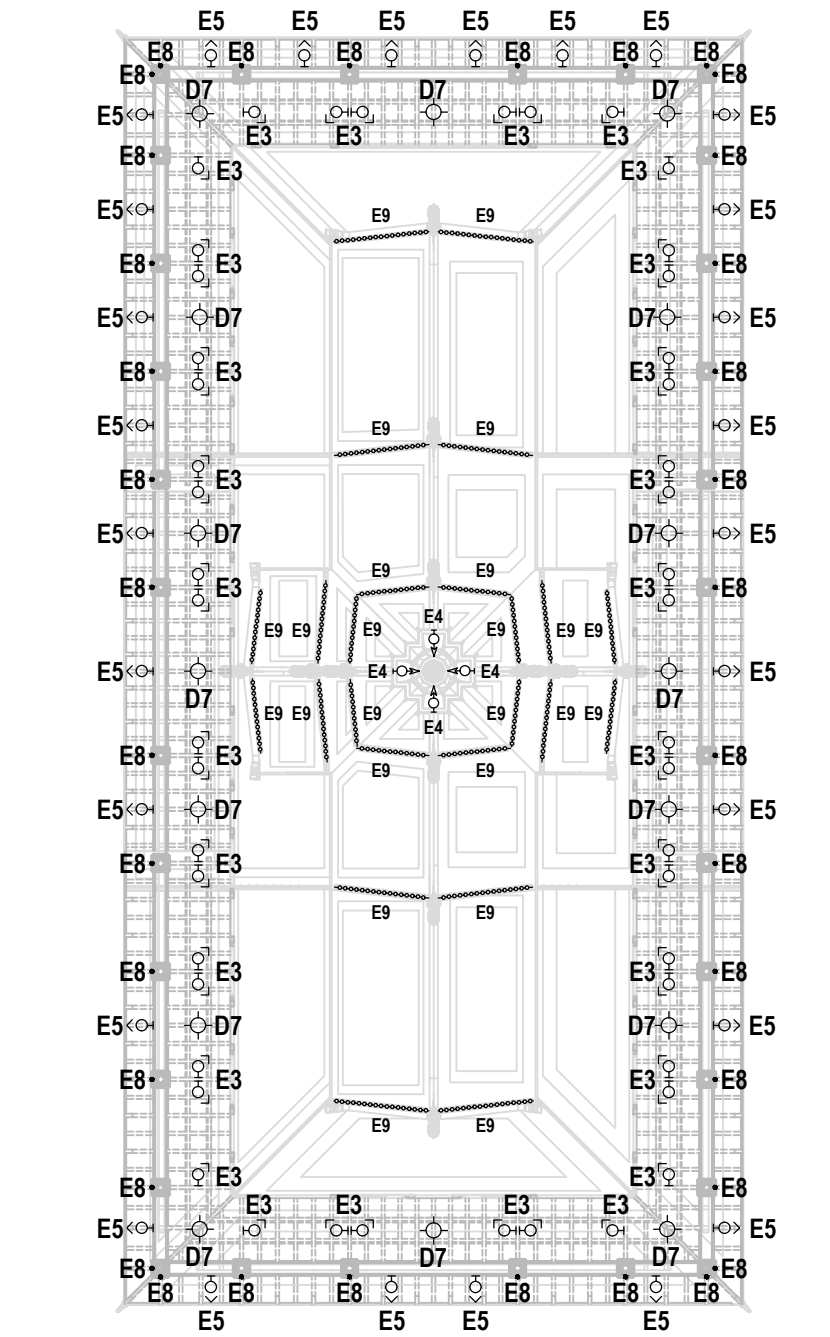
FIXTURE SCHEDULE

10/12/2021 WAT KHMER KAMPUCHEA KROM		SPECIAL USE PERMIT LIGHTING SPREAD SHEET											
TYPE	IMAGE	MANUFACTURER	PRODUCT NAME	MOUNTING	SIZE	LAMP	WATTS	KELVIN	CR	LUMENS	F-FULLY SHIELDING	P-PARTIAL SHIELDING	B-U-GRATING OR DA-DOWNWARD ANKING
E1		BEGA	24372 WALL LUMIERE	WALL MOUNT SCENCE	7.78" x 4.3/8" x 3.3/8"	LED	6.1	2700K	90	459	F		00-U-GO
E3		BK LIGHTING	MICRO NITE STAR MEDIUM FLOOD	CEILING MOUNT MONOPONT	1.625" DIA. x 4.5" L	LED	6.5	2700K	90+	375	P		DA
E4		BK LIGHTING	MICRO NITE STAR SPOT	ROOF MOUNT MONOPONT	1.625" DIA. x 4.5" L	LED	6.5	2700K	90+	480	P		DA
E5		BK LIGHTING	MICRO NITE STAR MEDIUM FLOOD W/ RECTILINEAR LENS	BEAM MOUNT MONOPONT	1.625" DIA. x 4.5" L	LED	6.5	2700K	90+	375	P		DA
E7		MP LIGHTING	LD1	RECESSED	0.75" DIA. x 1.5" H	LED	0.2	2700K	90+	2.7	P		00-U-GO
E8		MP LIGHTING	LD1	SMALL COLUMN DOWNLIGHT	2.5" DIA. x 2.25" H	LED	2.6	2700K	90+	75	P		00-U-GO
E9		AION LED	3924-26 / 27-WR	LINEAR LED STRIP ROOF ACCENT	0.72" x 0.80" INCL CLIP	LED	1.4W/FT	2500K	96	116/ft	F		DA
E10		BEGA	24372 WALL LUMIERE	WALL MOUNT SCENCE	7.78" x 4.3/8" x 3.3/8"	LED	6.1	2700K	90	459	F		00-U-GO
L3		BK LIGHTING	MINI MICRO SPOT	SCULPTURE ACCENT	1.625" DIA. x 4.5" L	LED	2.5	2700K	90+	176	P		DA
L4		MP LIGHTING	L904	BOLLARD PATH LIGHT	4.5" SQUARE x 24" H	LED	8	2700K	90+	357	F		00-U-GO
L6		LUCIFER	IMPACT-DOUBLE	RECESSED IN WALL	3.27" W x 2.75" H	LED	6.5	2700K	80+	150	F		00-U-GO
L11		WAGNER	Lumenpod 16	HANDRAIL STEP LIGHT	0.63" DIA x 0.76" D	LED	-2	2700K	85	116	F		DA
L12		BK LIGHTING	MINI MICRO FLOOD	TREE MOUNT DOWNLIGHT	1.625" DIA. x 4.5" L	LED	2.5	2700K	90+	176	P		N/A
L13		BK LIGHTING	MINI MICRO MEDIUM FLOOD	TREE MOUNT DOWNLIGHT	1.625" DIA. x 4.5" L	LED	2.5	2700K	90+	176	P		N/A
L17		MP LIGHTING	L904-B-W27H-24	BOLLARD PATH LIGHT	4.5" W x 6.12" H x 24" L	LED	8	2700K	90	357	P		DA
L18		PRIMUS LIGHTING	DECOSTRING DSW-36-120-G16.5F-27/200	STRING LIGHTS	3/8" SPACING	LED	2.5	2700K	85	200	N/A		N/A
L20		LUMIERE	CON 303-01-LED01	BOLLARD PEDESTRIAN / PARKING	5.7" x 5" x 36" H	LED	8.5	2700K	90	600	P		00-U-G1
L21		BEGA	24064-K27	PARKING IN-WALL	10.17" W x 2.314" H	LED	7.2	2700K	80+	493	P		00-U-G2
L22		AION LED	4904WR	SIGN LIGHT PEDESTRIAN GATE	0.72" x 0.80" INCL CLIP	LED	2.4W/FT	2700K	90	NA	N/A		N/A
L23		AION LED	4904WR	SIGN LIGHT VEHICULAR GATE	0.72" x 0.80" INCL CLIP	LED	2.4W/FT	2700K	90	NA	N/A		N/A
L25		BEGA	24372-K27	WALL MOUNT SCENCE W/ MOTION CTRL	7.78" x 4.3/8" x 3.3/8"	LED	6.1	2700K	90	459	F		00-U-GO
L26		MP LIGHTING	U306	WATER FEATURE FXTURE SIDE MOUNTED	2.5" DIA. x 2.25" H	LED	2.6	2700K	90+	75	P		00-U-GO

ALL LUMINAIRES ARE ON AN ASTRONOMICAL TIMER WITH AUTOMATIC CURVEW SHUT-OFF. ADDITIONAL USE OF MOTION DETECTORS WHERE AFTER HOURS USE MAY BE DESIRED.
ALL LUMINAIRES ARE DIMMABLE DOWN TO 1% OR LESS.



1 SITE LIGHTING
Scale: 1/16" = 1'-0"



2 TEMPLE LIGHTING
Scale: 1/16" = 1'-0"

WAT KHMER KAMPUCHEA KROM
2740 RUBY AVENUE
SAN JOSE, CALIFORNIA 95148
APN: 652-29-014
PROJECT FILE NO. SP20-024

ANDREW MANN ARCHITECTURE
360 LANGTON STREET, SUITE 302
SAN FRANCISCO, CALIFORNIA 94103
TELEPHONE: 415-683-4134
ANDREW@MANNARCHITECTURE.COM

EJA
201 ALAMEDA DEL PRADO, SUITE 204
NOVATO, CALIFORNIA 94903
TELEPHONE: 415-482-0823
EJA@LIGHTING.COM

SHEET TITLE:
SITE PLAN LIGHTING

ORIGINAL SHEET ISSUE DATE:
03/26/2021

SCALE: 1/16" = 1'-0"
DRAWN BY: MW

SHEET NUMBER:

S4.0



J:\WORK\TEMP\LANDSCAPE 2020\DRAWINGS\2022 0304 - WAT_KHMER_LAND_L16_SIP_REV3.DWG (10/12/2021 11:42 AM)